


Flight Procedure Tracking Form		Action: FLIGHT CHECK	Task Type: IAP	Date Open: 04/29/2014	Task #: 2014042930048901001	Request #: 20140429300489
Procedure: ILS OR LOC RWY 28L AMDT 1			Airport ID: KFL	Airport: FORT LAUDERDALE/HOLLYWOOD INTL		Reimbursable #: NO
City: FORT LAUDERDALE	ST: FL	GPS #:	Estimated Chart Date: 01/05/2017		FICO #:	
Fac ID: ADI		Fac. Type: ILS			Specialist: LIAM DONAHUE	
Procedure Review						
	Rec'd	Rel'd	Full Name	Comments		
Lead:	05/18/2016					
QA:				4 10/7CTabaka		
Liaison:						
Procedure Comments:			ENROUTE-NON	Remark Type: INFORMATION		
CONTACT: JULIE MORGAN/ ADOLFO URRUTIA/DON LANIER, AJV-5410 LEADS, 405.954-8568/405.954-2079/405.954-8242						

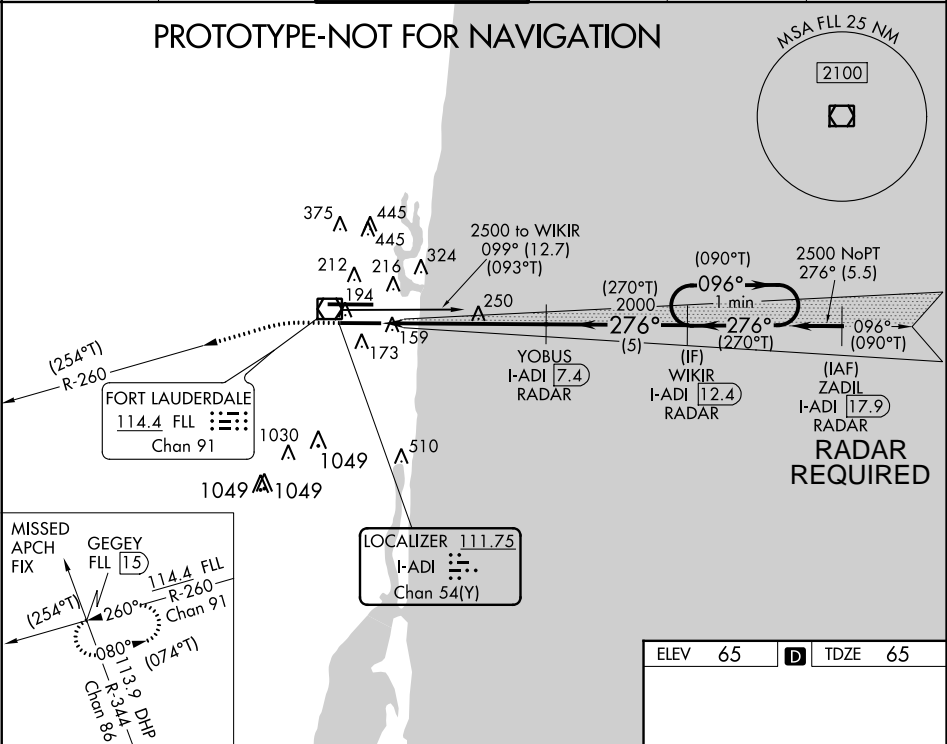
QUALITY
4
CHECKED

QUALITY
28
CHECKED

LOC/DME I-ADI 111.75 Chan 54(Y)	APP CRS 276°	Rwy Idg TDZE Apt Elev 8000 65 65
---	------------------------	--

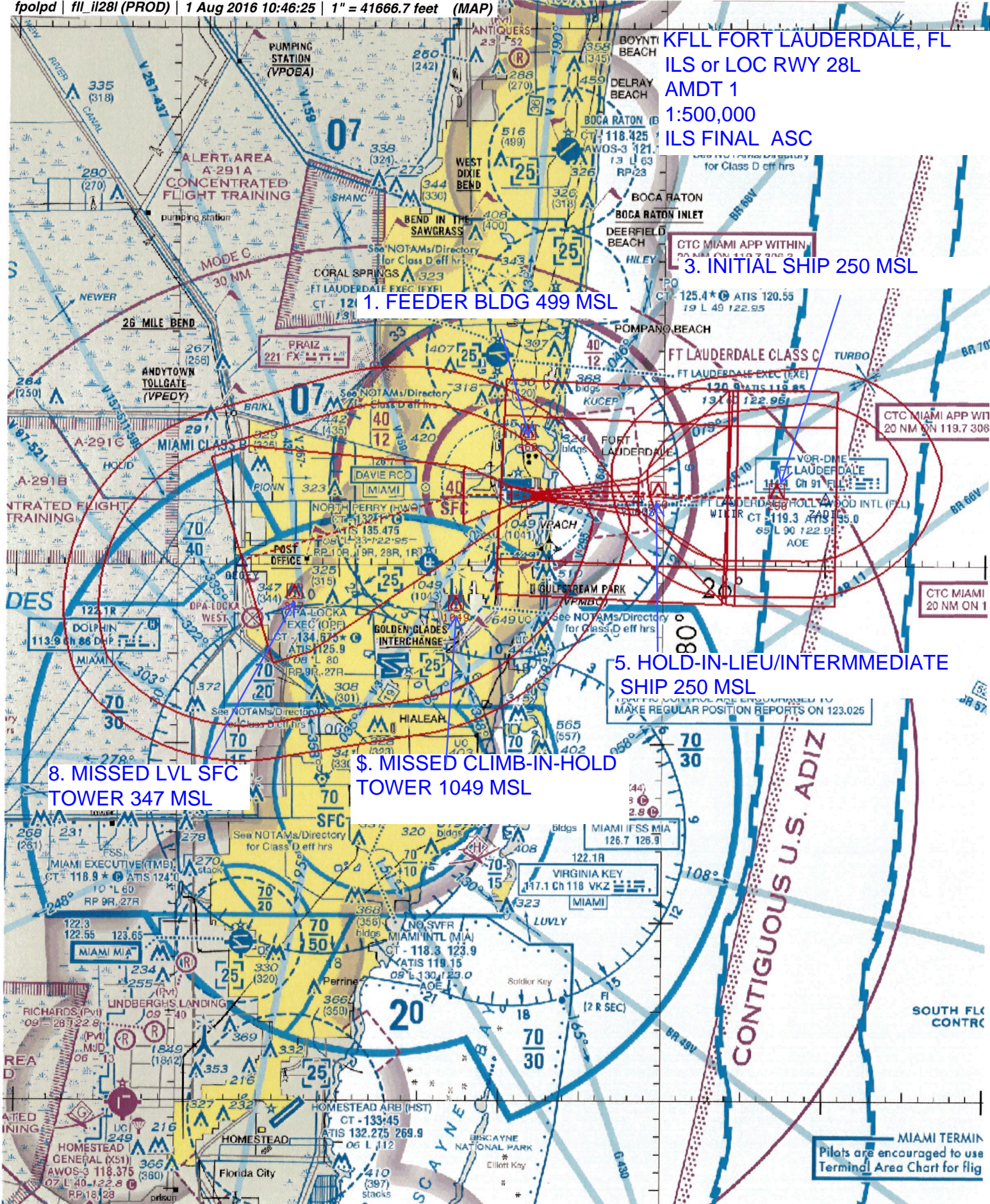
ILS or LOC RWY 28L
FORT LAUDERDALE/HOLLYWOOD INTL (FLL)

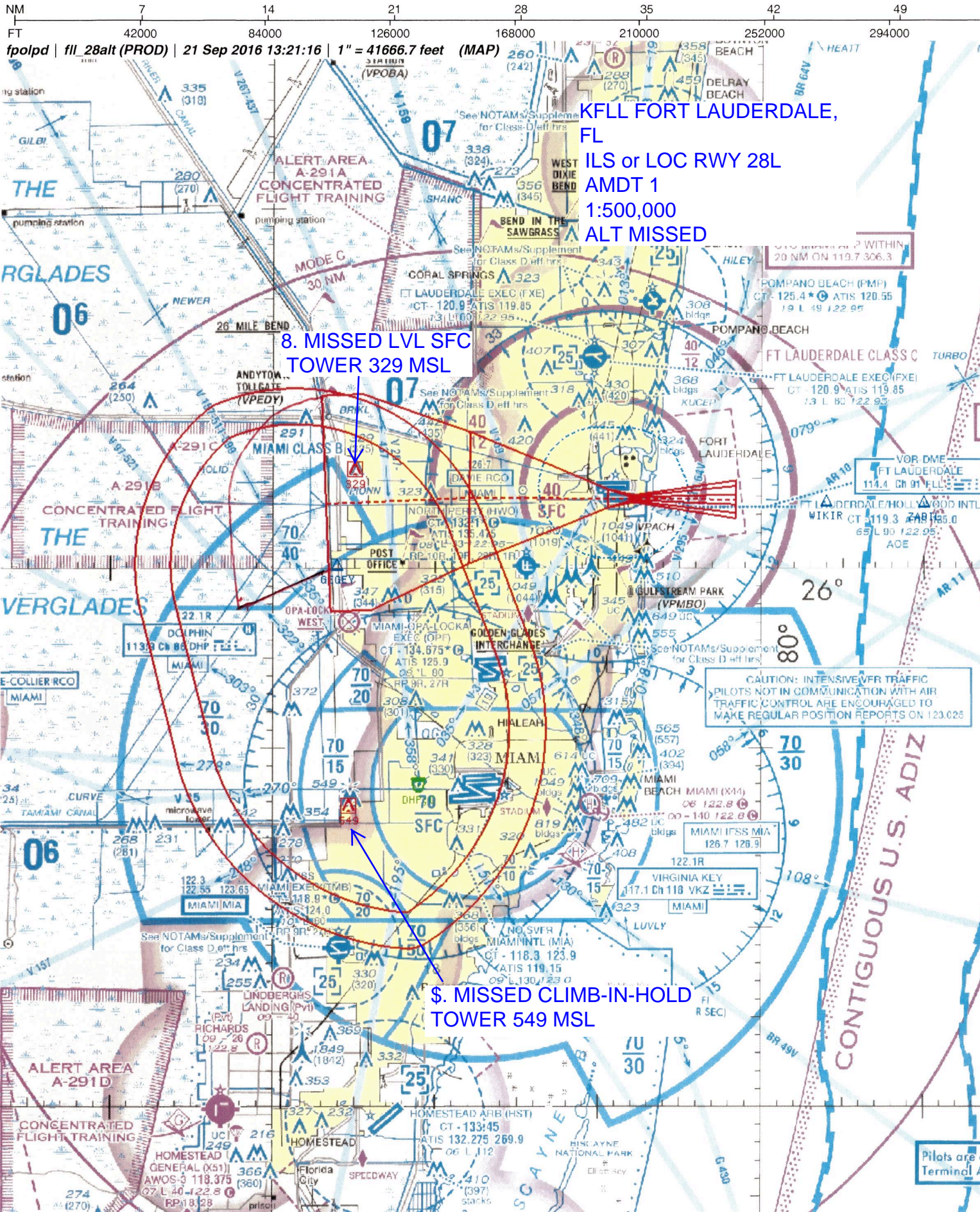
<div><div>T</div><div>A</div></div>	DME or Radar Required. Simultaneous approach authorized. For inop ALS, increase S-LOC 28L Cat D visibility to 1¼ SM. Inop table does not apply to S-ILS 28L.		MALSF 	MISSED APPROACH: Climb to 1000 then climbing left turn to 4000 on FLL VOR/DME R-260 to GEGEY INT/FLL 1.5 DME and hold, continue climb-in-hold to 4000.		
	ATIS 135.0	MIAMI APP CON 133.775 285.6	FORT LAUDERDALE TOWER 119.3 257.8	GND CON 121.4	CLNC DEL 128.4	UNICOM 122.95



1000 4000 FLL R-260 GEGEY INT	VGSI and ILS glidepath not coincident (VGSI Angle 3.00/TCH 69).			
*LOC only.	YOBUS I-ADI [7.4] RADAR	WIKIR I-ADI [12.4] RADAR	One Minute Holding Pattern	
	2000 276° (270°T)	2000 276° (270°T)	2500 276° (270°T)	GS 3.00° TCH 53
1.2 NM	4.8 NM	5 NM		
CATEGORY	A	B	C	D
S-ILS 28L	265/40 200 (200-¾)			
S-LOC 28L	500/40	435 (500-¾)	500/50	435 (500-1)
CIRCLING	680-1	615 (700-1)	800-2¼ 735 (800-2¼)	800-2½ 735 (800-2½)

ELEV	65	D	TDZE	65
<div><div></div><div>276° 5.9 NM from FAF</div></div>				
HIRL Rwy 10L-28R and 10R-28L				
FAF to MAP 5.9 NM				
Knots	60	90	120	150 180
Min:Sec	5:54	3:56	2:57	2:22 1:58





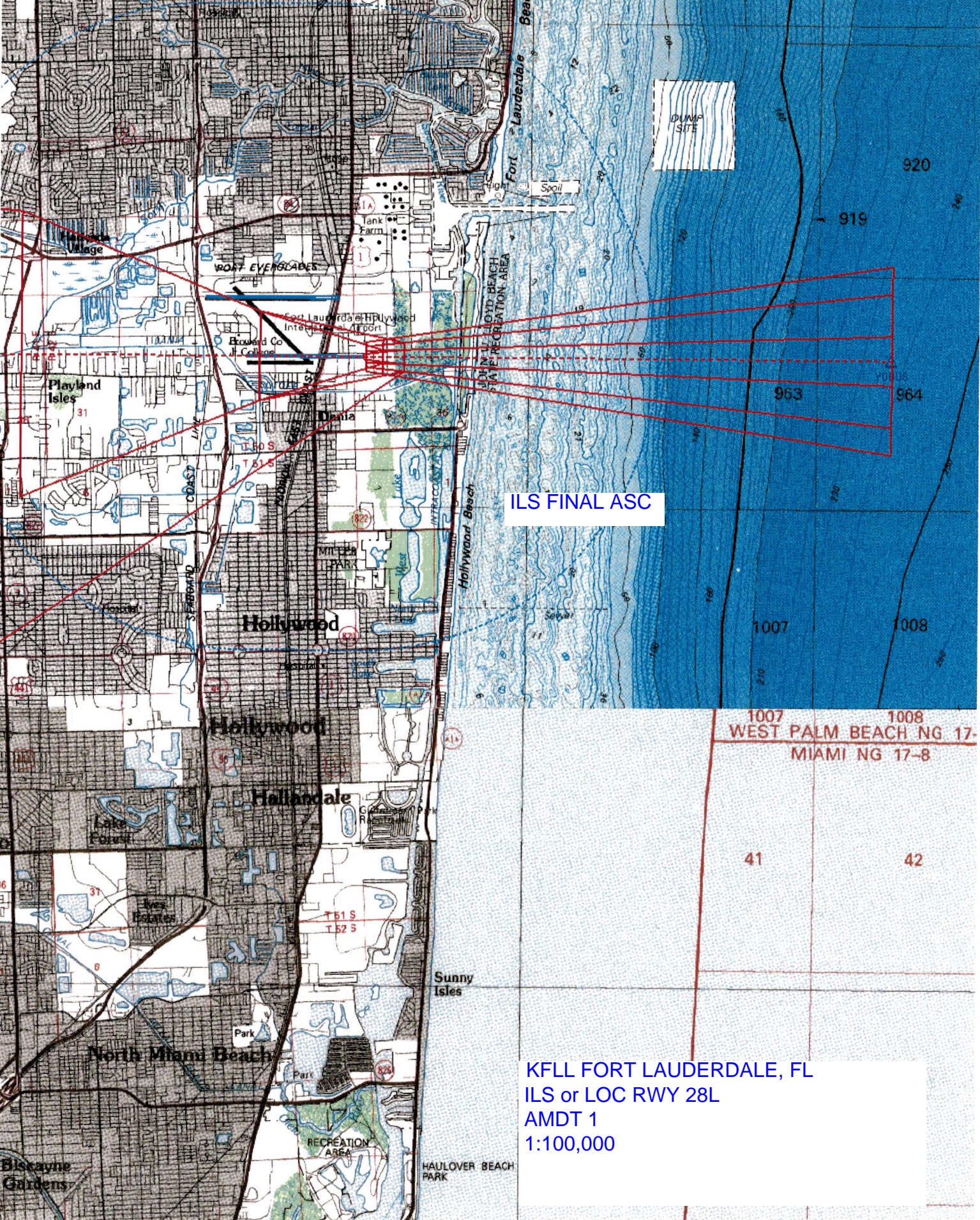
KFL FORT LAUDERDALE,
FL
ILS or LOC RWY 28L
AMDT 1
1:500,000
ALT MISSED

8. MISSED LVL SFC
TOWER 329 MSL

\$. MISSED CLIMB-IN-HOLD
TOWER 549 MSL

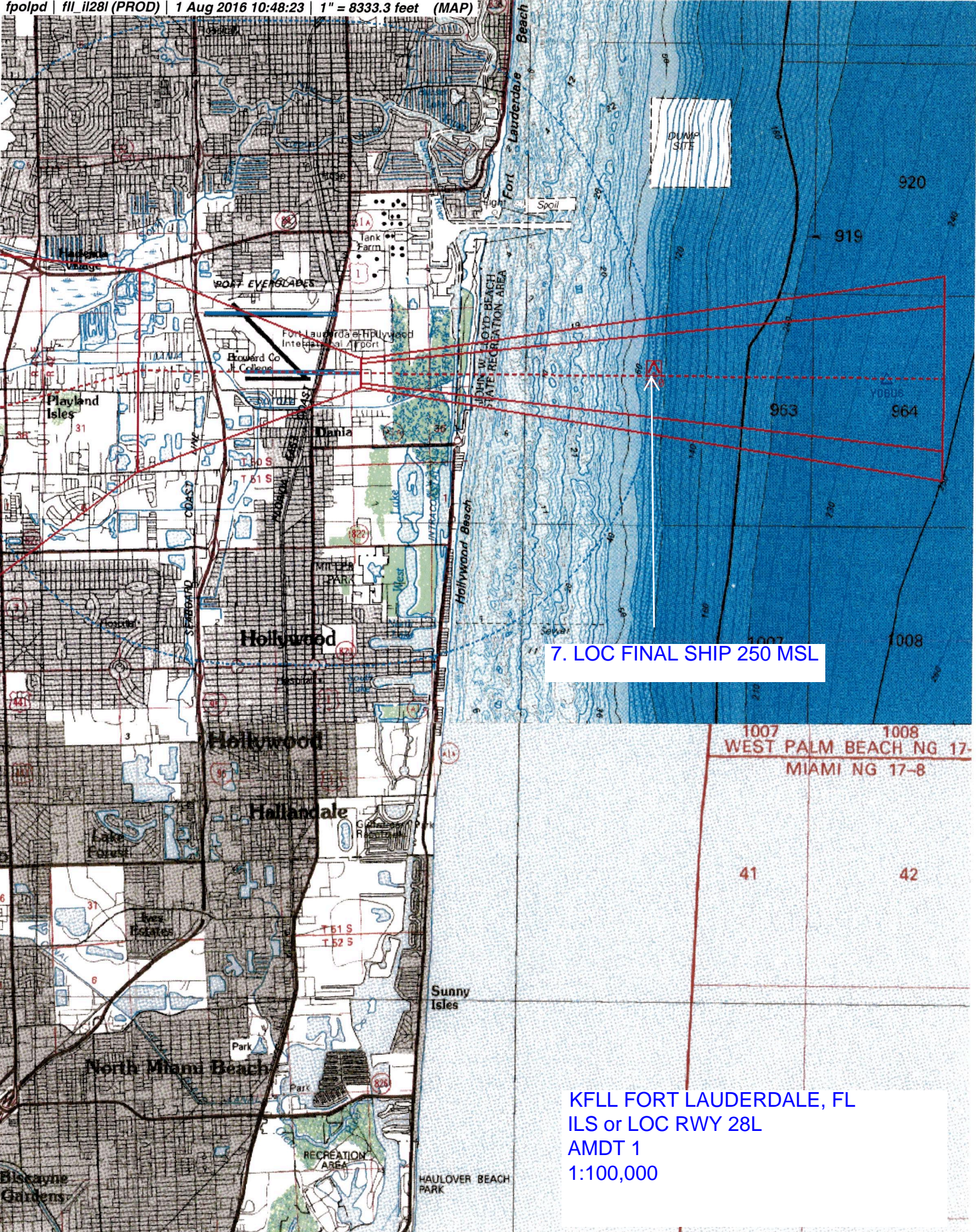
NM 1 2 3 4 5 6 7 8 9 10
FT 8000 16000 24000 32000 40000 48000 56000 64000

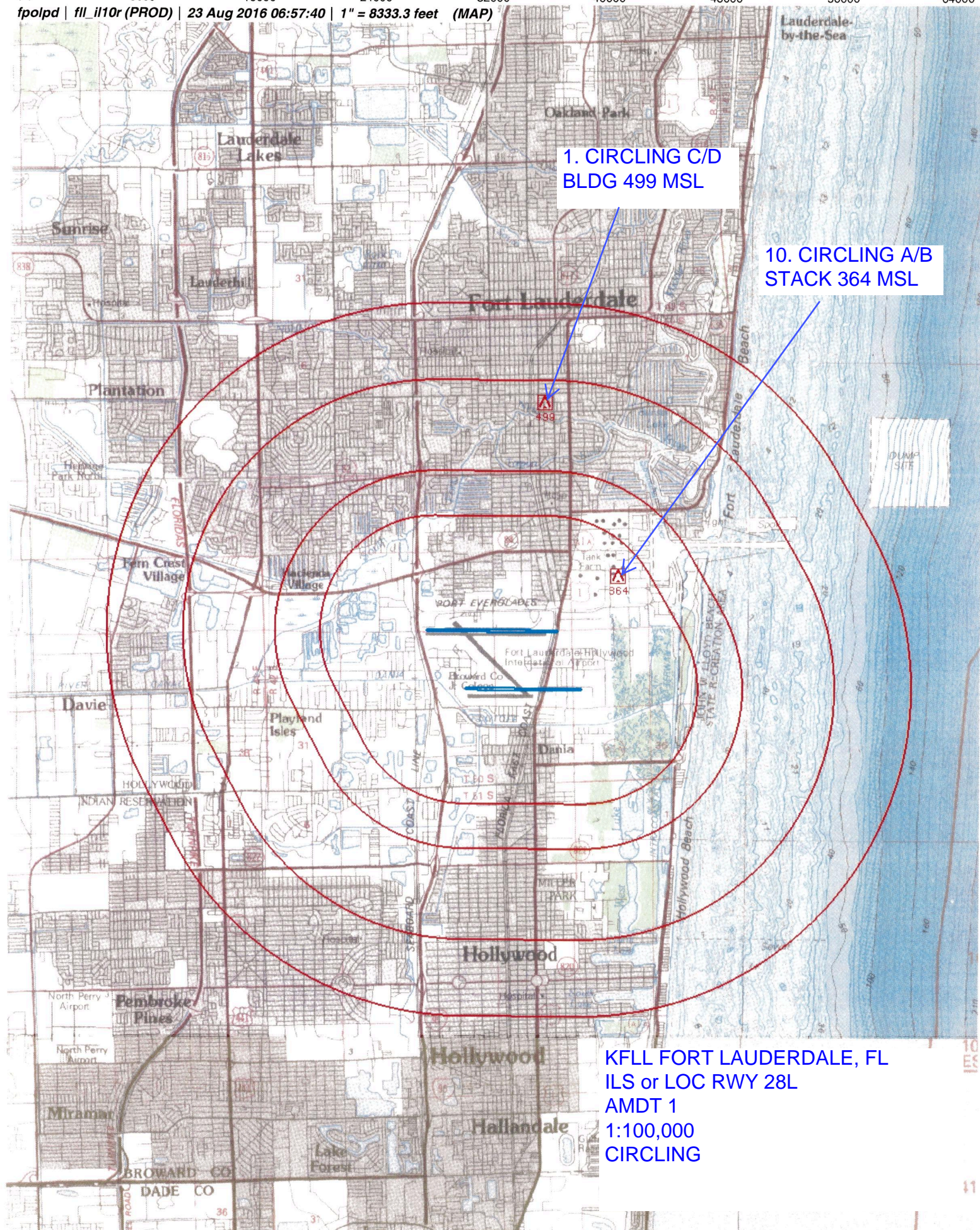
fpolpd | fil il28l (PROD) | 1 Aug 2016 10:47:39 | 1" = 8333.3 feet (MAP)



NM 1 2 3 4 5 6 7 8 9 10
FT 8000 16000 24000 32000 40000 48000 56000 64000

fpolpd | fil IL28L (PROD) | 1 Aug 2016 10:48:23 | 1" = 8333.3 feet (MAP)





TERMINAL AIRSPACE DATA REQUIREMENTS

CITY: **FORT LAUDERDALE**

STATE: **FL**

AIRPORT NAME: **FORT LAUDERDALE/HOLLYWOOD INTL**

ID: **KFLL**

PROCEDURE: **ILS OR LOC RWY 28L**

AMDT: **1**

DOCKET#: **NOT REQUIRED**

(96-AXX-X/Required/Not Required)

ALL DIST TO 1/100 NM; ELEV TO NEAREST FT; COORD TO 1/100 SEC; DEG TO 1/100 DG.

- | | | | |
|---|---------------------------------|--------------------------------|---------------|
| 1. Distance from | <u>THLD</u> | to 1000' point | <u>3.08</u> |
| <small>(Enter THLD, FAF, ARP, FACILITY, as appropriate)</small> | | | |
| 2. Width of | <u>FINAL</u> | segment at 1000' point | <u>0.89</u> |
| <small>(Enter appropriate segment, final, intermediate, etc.)</small> | | | |
| 3. True Course of | <u>FINAL</u> | segment containing 1000' point | <u>276.38</u> |
| 4. High Terrain in | <u>FINAL</u> | segment containing 1000' point | <u>65</u> |
| 5. Distance from | <u>THLD</u> | to 1500' point | <u>5.11</u> |
| <small>(If 1500' point in PT maneuvering area or holding pattern note in remarks)</small> | | | |
| 6. Width of | <u>FINAL</u> | segment at 1500' point | <u>1.32</u> |
| 7. True Course of | <u>FINAL</u> | segment containing 1500' point | <u>276.38</u> |
| 8. High Terrain in | <u>FINAL</u> | segment containing 1500' point | <u>65</u> |
| 9. Threshold Coordinates (if straight-in) ... | <u>260356.67N / 0800802.34W</u> | | |
| 10. ARP Coordinates | <u>260418.00N / 0800858.90W</u> | | |
| 11. Runway Approach End and distance furthest from ARP | RWY | <u>10L</u> | |
| | Distance | <u>0.96</u> | NM |
| 12. FAF Coordinates | <u>260354.16N / 0800128.64W</u> | | |

REMARKS: Approach/Drawing attached.