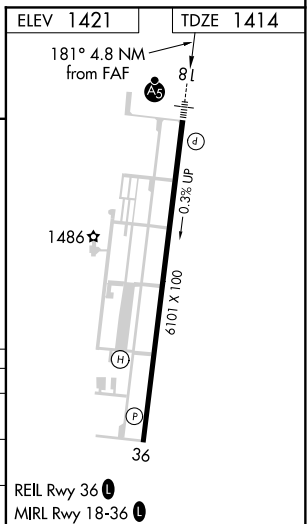
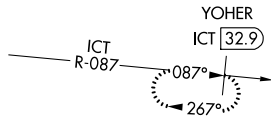


Flight Procedure Tracking Form		Action: FLIGHT CHECK	Task Type: IAP	Date Open: 05/09/2017	Task #: 201403272875700A001	Request #: 20140327287570
Procedure: ILS OR LOC RWY 18 AMDT 0B			Airport ID: KAAO	Airport: COLONEL JAMES JABARA		Reimbursable #: NO
City: WICHITA	ST: KS	GPS #:	Estimated Chart Date: 12/07/2017		FICO #:	
Fac ID: AAO		Fac. Type: ILS		Specialist: THOMAS KIRKPATRICK		
Procedure Review						
	Rec'd	Rel'd	Full Name	Comments		
Lead:	06/05/2017	08/11/2017	DAVID DANNER	QUALITY Digitally signed by		
QA:	08/11/2017	08/11/2017	DAVID DANNER	32 PABLO ORTIZ-JR		
Liaison:	08/11/2017	08/14/2017	MARY MCDONALD	CHECKED Aug 29, 2017		
Procedure Comments:			ENROUTE-NON			
			Remark Type: INFORMATION			
<p>CONTACT: DION LANCIA 405-954-1267</p> <p>ASSIGNED MAG VAR: HUT VOR/DME: OLD 9E - NEW 4E</p> <p>8/24/2017: THIS IS AN UPDATED COPY OF THE FORM DEVELOPED ON 7/21/2017. ADDED REQUIRED EFFECTIVE DATE OF 12/07/2017.</p> <p>8/29/2017: THIS IS AN UPDATED COPY OF THE 8260-2 FORMS DEVELOPED ON 8/03/2017. HUKAM: CHANGED PAT 2 RAD/CRS/BRG FROM .85 CRS TO 000.85 AND REMOVED DME LEG LENGTH. CHANGED CONTROLLING OBSTRUCTION (PAT 1 AND 2) FROM 1748 MSL TOWER TO 1742 MSL AAO. YOHER: IN REASON FOR REVISION, CHANGED OBSTACLE MSL ELEVATION FROM "1735 TO 1746" TO "1746 TO 1735".</p>						

ILS or LOC RWY 18
COLONEL JAMES JABARA (AAO)

MISSED APPROACH: Climb to 1900 then climbing left turn to 3600 on ICT R-087 to YOHER/ICT 32.9 DME and hold.

DME REQUIRED



COLONEL JAMES JABARA (AAO)
ILS or LOC RWY 18

LOC/DME I-AAO 109.55 Chan 32 (Y)	APP CRS 181°	Rwy Idg TDZE Apt Elev 6101 1414 1421
--	------------------------	--

ILS or LOC/DME RWY 18
COLONEL JAMES JABARA (A.A.O)

⚠ If local altimeter setting not received, use Wichita Dwight D Eisenhower National altimeter setting and increase all DAs/MDAs 40 feet. VDP NA when using Wichita Dwight D Eisenhower National altimeter setting.

MALSR
AS
MISSED APPROACH: Climb to 1900 then climbing left turn to 3600 via ICT R-087 to YOHER/ICT 32.9 DME and hold.

ASOS 134.025	WICHITA APP CON 134.8 269.1	CLNC DEL 125.0	UNICOM 122.7 (CTAF) 0
------------------------	---------------------------------------	--------------------------	--

