





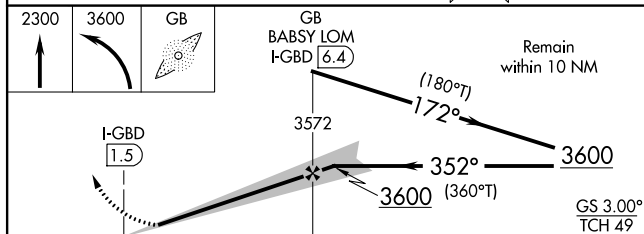
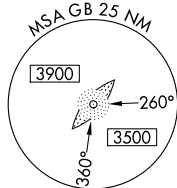
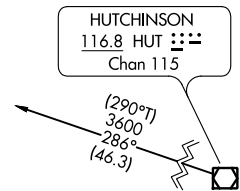
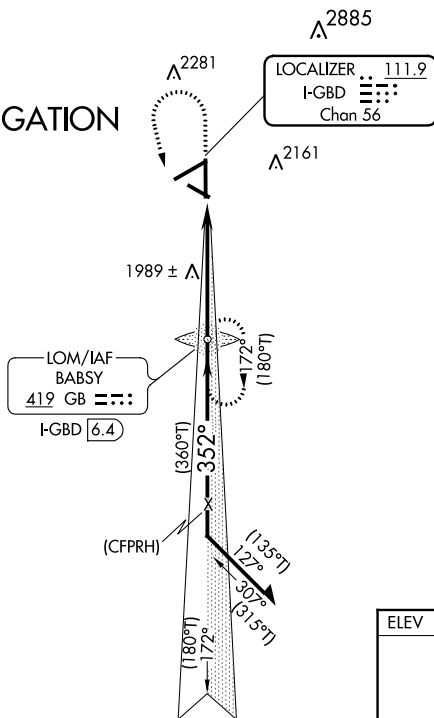
<b>Flight Procedure Tracking Form</b>		<b>Action:</b> FLIGHT CHECK	<b>Task Type:</b> IAP	<b>Date Open:</b> 05/08/2017	<b>Task #:</b> 2014032728757003001	<b>Request #:</b> 20140327287570
<b>Procedure:</b> ILS OR LOC RWY 35 AMDT 0C			<b>Airport ID:</b> KGBD	<b>Airport:</b> GREAT BEND MUNI		<b>Reimbursable #:</b> NO
<b>City:</b> GREAT BEND	<b>ST:</b> KS	<b>GPS #:</b>	<b>Estimated Chart Date:</b> 12/07/2017		<b>FICO #:</b>	
<b>Fac ID:</b> GBD		<b>Fac. Type:</b> ILS			<b>Specialist:</b> ROSE BOONE	
<b>Procedure Review</b>						
	<b>Rec'd</b>	<b>Rel'd</b>	<b>Full Name</b>	<b>Comments</b>		
<b>Lead:</b>	06/05/2017	08/21/2017	DAVID DANNER	QUALITY Digitally signed by		
<b>QA:</b>	08/21/2017	08/21/2017	DAVID DANNER	32 PABLO ORTIZ-JR		
<b>Liaison:</b>	08/21/2017	08/21/2017	MARY MCDONALD	CHECKED Oct 12, 2017		
<b>Procedure Comments:</b>			<b>ENROUTE-NON</b>			
			<b>Remark Type:</b> INFORMATION			
<p>CONTACT: STEVE VARGAS AJV-5420 LEAD: 405.954.0695</p> <p>PROCESSED IAW FLIGHT INSPECTION TEAM (AJW-33) MEMO, MAY 30, 2017, SUBJECT: FLIGHT INSPECTION NOT REQUIRED.</p> <p>08/23/17: THIS IS AN UPDATED COPY OF THE FORM DEVELOPED ON 07/18/17.</p> <p>1. CHANGED REQUIRED EFFECTIVE DATE FROM ROUTINE TO HARD DATE OF 12/07/2017.</p> <p>10/12/17: THIS IS A CORRECTED COPY OF THE FORM APPROVED ON 08/23/17.</p> <p>1. CHANGED DIST TO THLD FROM OM FROM 5.07 TO 4.94.</p>						


LOC/DME I-GBD <b>111.9</b> Chan <b>56</b>	APP CRS <b>352°</b>	Rwy Idg <b>7851</b> TDZE <b>1883</b> Apt Elev <b>1887</b>
---	------------------------	---

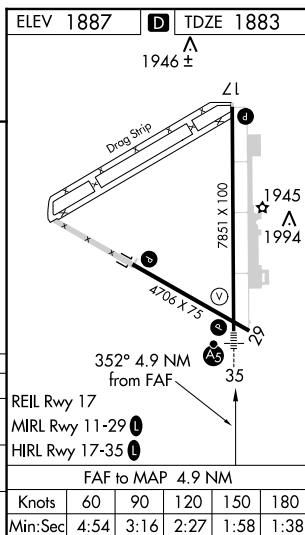
ILS or LOC RWY 35  
GREAT BEND MUNI (GBD)

  NA	ADF required.	MALSR  	MISSED APPROACH: Climb to 2300 then climbing left turn to 3600 direct BABS Y LOM/I-GB 6.4 DME and hold.
AWOS-3PT <b>119.275</b>		KANSAS CITY CENTER <b>118.8 322.42</b>	UNICOM <b>122.8 (CTAF) 0</b>

PROTOTYPE-  
NOT FOR NAVIGATION

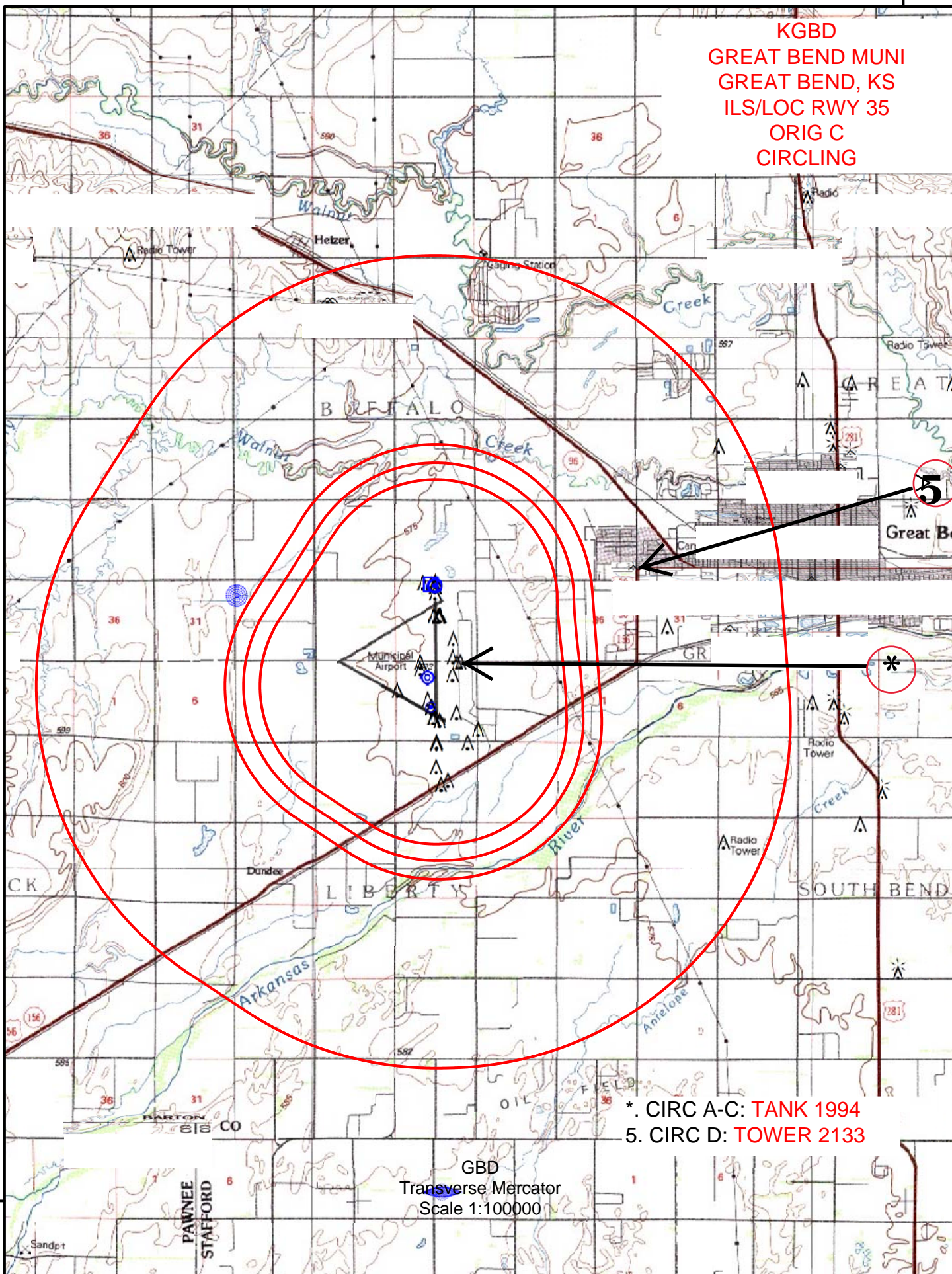


				
CATEGORY	A	B	C	D
S-ILS 35	2083-½ 200 (200-½)			
S-LOC 35	2240-½ 357 (400-½)			2240-¾ 357 (400-¾)
CIRCLING	2300-1 413 (500-1)	2340-1 453 (500-1)	2340-1½ 453 (500-1½)	2500-2½ 613 (700-2½)



98°45'0"W

KGBD  
GREAT BEND MUNI  
GREAT BEND, KS  
ILS/LOC RWY 35  
ORIG C  
CIRCLING



\*. CIRC A-C: TANK 1994  
5. CIRC D: TOWER 2133

GBD  
Transverse Mercator  
Scale 1:100000

38°15'0"N