

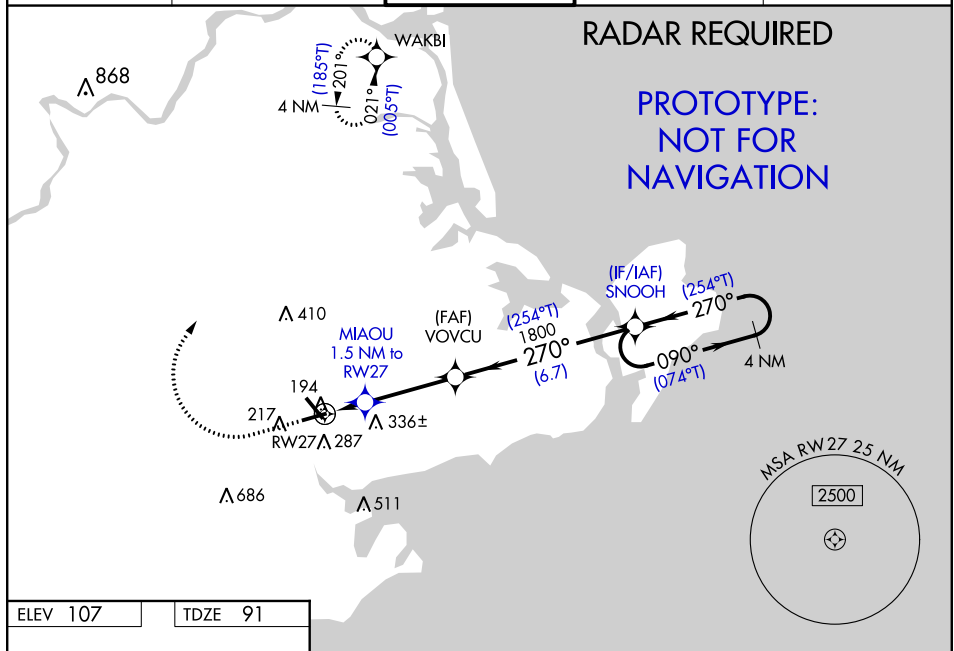
Flight Procedure Tracking Form		Action: FLIGHT CHECK	Task Type: IAP	Date Open: 03/18/2014	Task #: 2014031829973201002	Request #: 20140318299732
Procedure: RNAV (GPS) RWY 27 AMDT 1			Airport ID: KBVY	Airport: BEVERLY RGNL		Reimbursable #: NO
City: BEVERLY	ST: MA	GPS #:	Estimated Chart Date: 11/10/2016		FICO #:	
Fac ID: NOCHANGE		Fac. Type:		Specialist: MIKE MELSSSEN		
Procedure Review						
	Rec'd	Rel'd	Full Name	Comments		
Lead:	05/21/2014	05/16/2016	DONALD LANIER	QUALITY		
QA:	05/16/2016			4 7/19CTabaka		
Liaison:				CHECKED		
Procedure Comments:			ENROUTE - NON			
			Remark Type: INFORMATION			
CONTACTS: MARLON ROBINSON/JULIE MORGAN; AJV-5410 LEADS; 405.954.3636/8568.						

FIG

RNAV (GPS) RWY 27
BEVERLY RGNL (BVY)

MISSED APPROACH:
Climb to 700 then
climbing right turn to
2000 direct WAKBI
and hold.

ATIS 119.2	BOSTON APP CON 124.4 279.6	BEVERLY TOWER★ 125.2 (CTAF) 0	GND CON 121.6	UNICOM 122.95
----------------------	--------------------------------------	---	-------------------------	-------------------------



***LNAV only.**

VOVCU

SNOOW

4 NM Holding Pattern

MIAOU 1.5 NM to RWY27

RWY27

1800

270° (254°T)

090° (074°T)

1800

GP 3.22° TCH 60

1.5 NM

3.3 NM

6.7 NM

CATEGORY	A	B	C	D
LPV DA	444-1	353 (400-1)		NA
LNAV/VNAV DA	438-1	347 (400-1)		NA
LNAV MDA	540-1	449 (600-1)	540-1 ³ / ₈	449 (600-1 ³ / ₈)
C CIRCLING	600-1	493 (600-1)	820-2 713 (800-2)	880-2½ 773 (800-2½)

BEVERLY RGNL (BVY)

RNAV (GPS) RWY 27

OLD

BEVERLY, MASSACHUSETTS

AL-5039 (FAA)

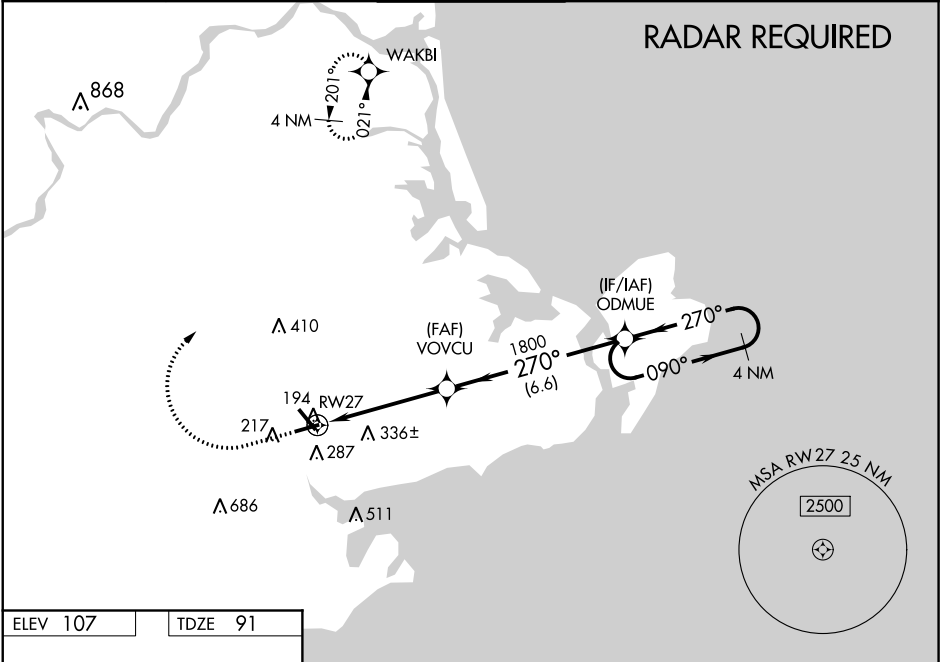
16063

WAAS CH 99731 W27A	APP CRS 270°	Rwy Idg 4755 TDZE 91 Apt Elev 107
--	------------------------	--

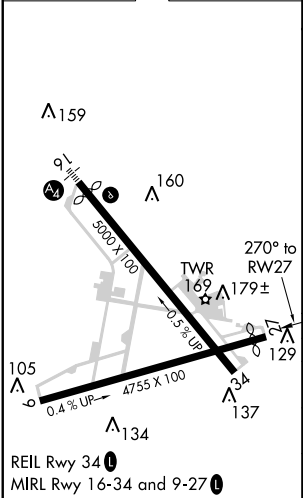
RNAV (GPS) RWY 27
BEVERLY MUNI (BVY)

<p>▼ DME/DME RNP-0.3 NA. Helicopter visibility reduction below 1 SM not authorized. For uncompensated Baro-VNAV systems, LNAV/VNAV NA below -16°C (4°F) or above 54°F (130°F). When local altimeter setting not received, use Lawrence altimeter setting and increase all DA 34 feet and all MDA 40 feet; increase LPV and LNAV/VNAV all Cats, Circling Cat C and LNAV Cat C and D visibility ½ mile. Night Landing: Rwy 9, 27 NA. Baro-VNAV NA when using Lawrence altimeter setting.</p>	<p>MISSED APPROACH: Climb to 700 then climbing right turn to 2000 direct WAKBI and hold.</p>
--	---

ATIS 119.2	BOSTON APP CON 124.4 279.6	BEVERLY TOWER★ 125.2 (CTAF) 0	GND CON 121.6	UNICOM 122.95
----------------------	--------------------------------------	---	-------------------------	-------------------------



ELEV 107	TDZE 91
----------	---------



	700	2000	WAKBI	
	↑	↻	✦	
	4 NM Holding Pattern			
	VOVCU 1800			
	ODMUE			
	RW27 1800			
	270° 090° 1800			
	4.9 NM 6.6 NM			
	GP 3.20° TCH 58			
CATEGORY	A	B	C	D
LPV DA	441-1	350 (400-1)		NA
LNAV/VNAV DA	438-1	347 (400-1)		NA
LNAV MDA	620-1	529 (600-1)	620-1½	529 (600-1½)
CIRCLING	620-1	513 (600-1)	620-1½	700-2
			513 (600-1½)	593 (600-2)

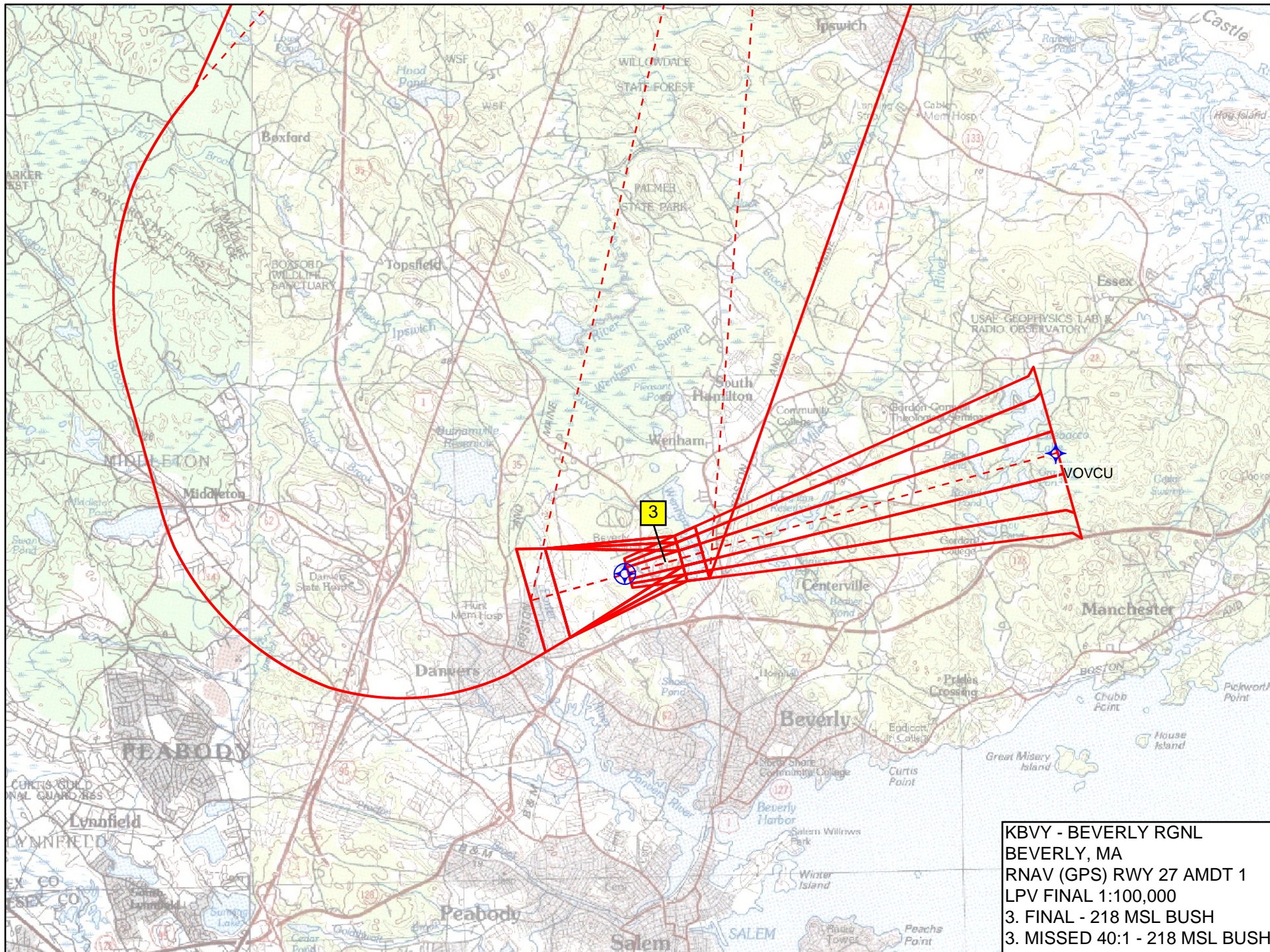
BEVERLY, MASSACHUSETTS
Orig-C 03MAR16

42°35'N - 70°55'W

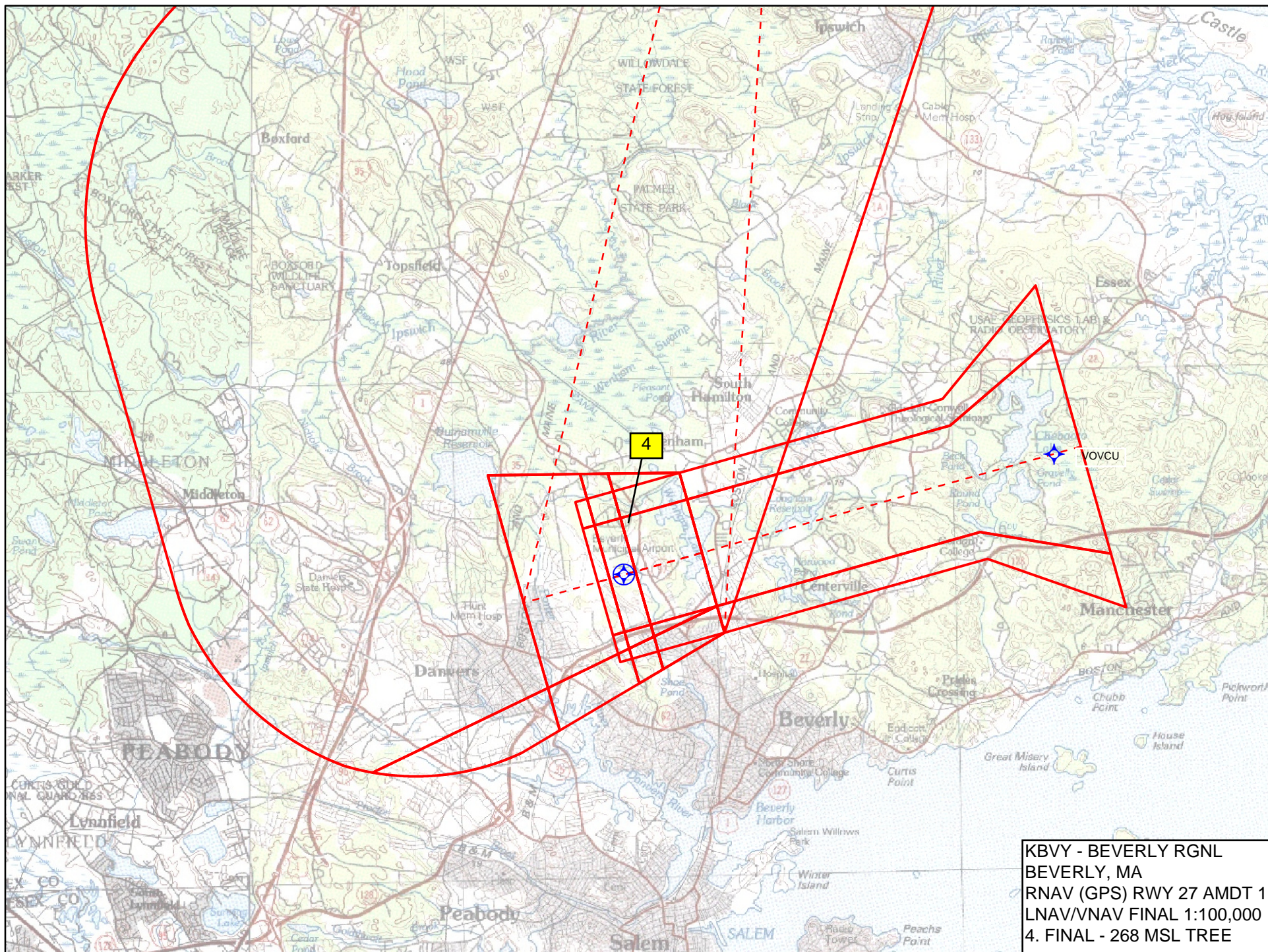
BEVERLY MUNI (BVY)
RNAV (GPS) RWY 27

NE-1, 26 MAY 2016 to 23 JUN 2016

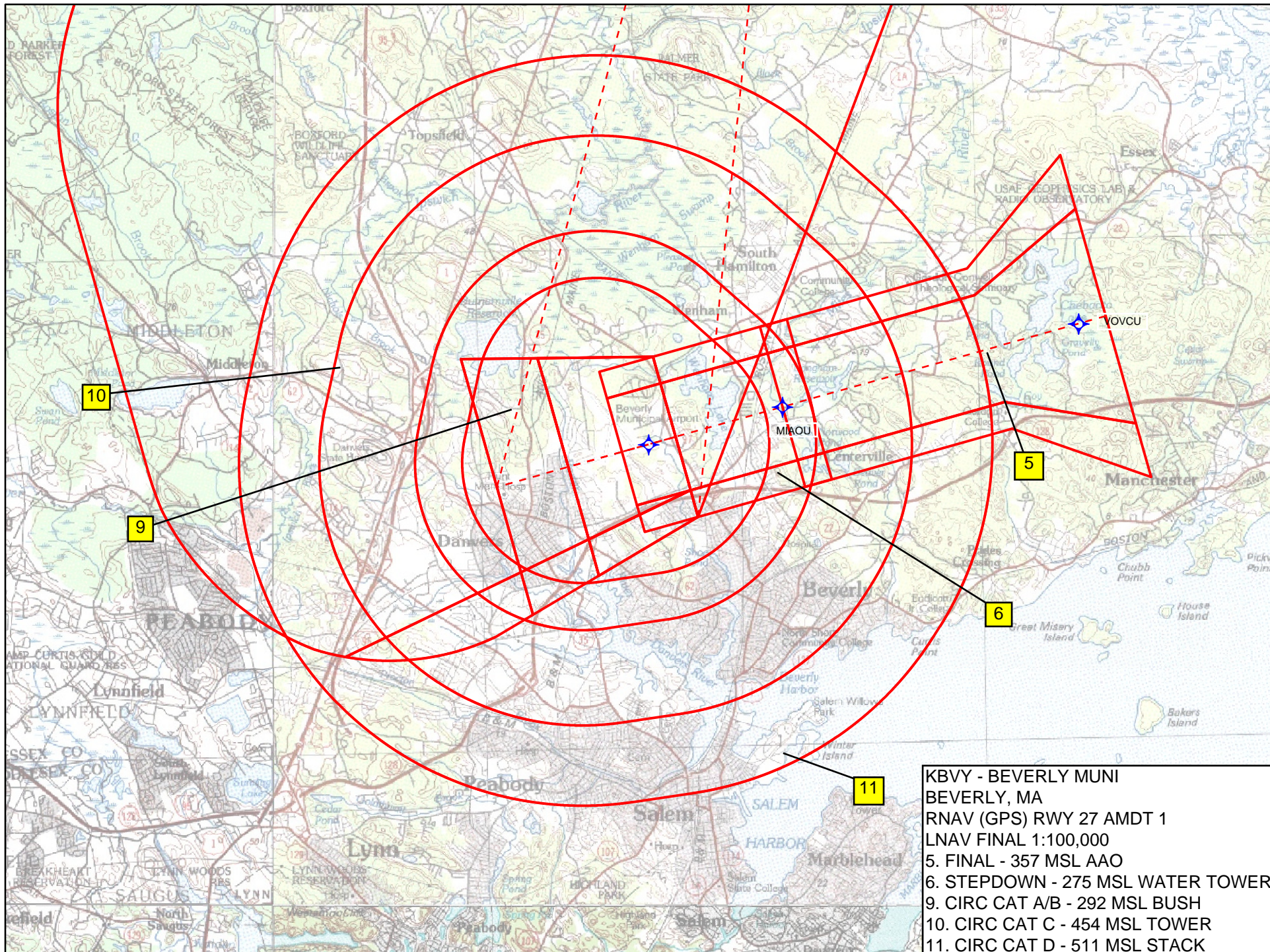
NE-1, 26 MAY 2016 to 23 JUN 2016



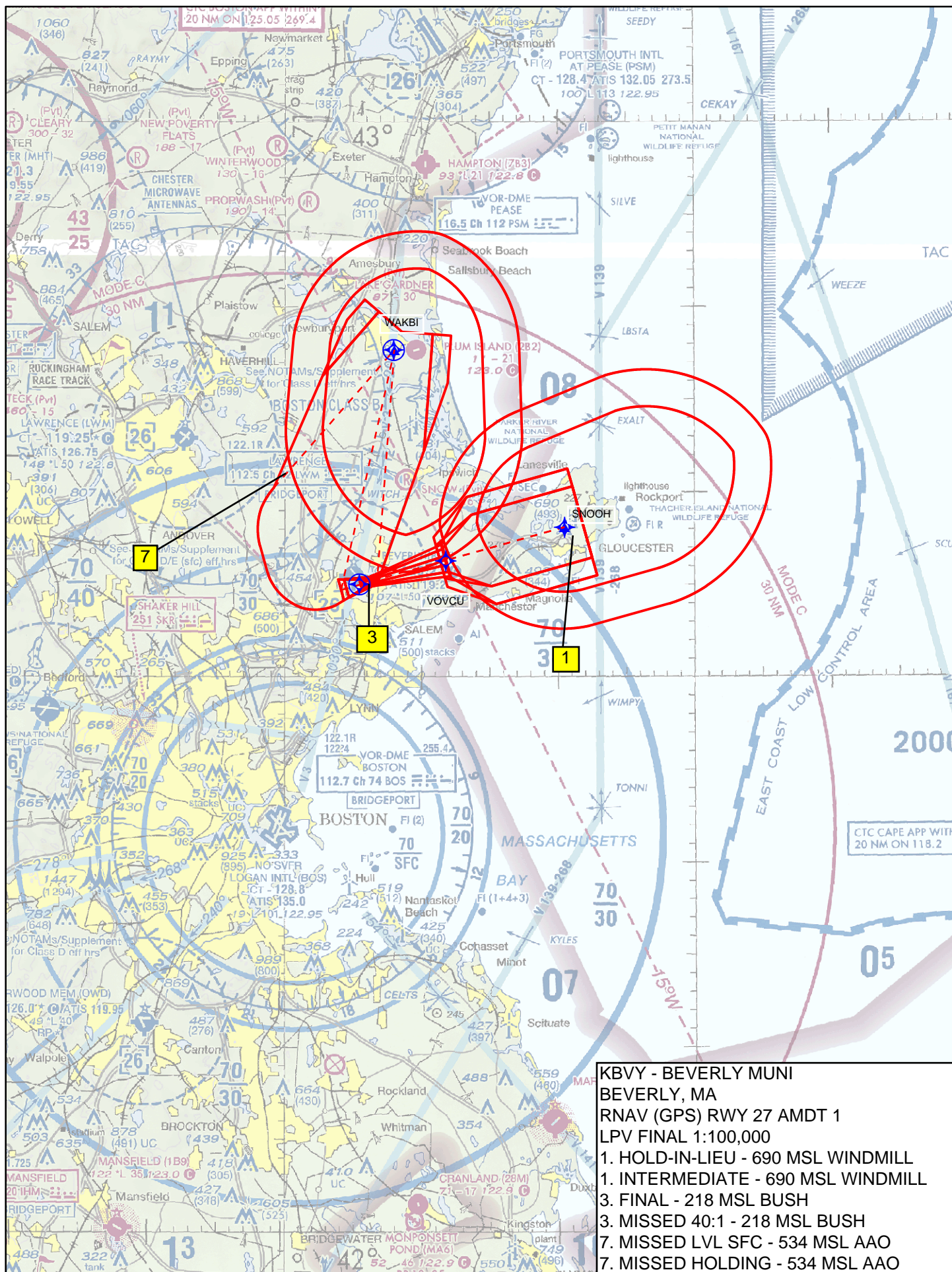
KBVY - BEVERLY RGNL
BEVERLY, MA
RNAV (GPS) RWY 27 AMDT 1
LPV FINAL 1:100,000
3. FINAL - 218 MSL BUSH
3. MISSED 40:1 - 218 MSL BUSH



KBVY - BEVERLY RGNL
BEVERLY, MA
RNAV (GPS) RWY 27 AMDT 1
LNAV/VNAV FINAL 1:100,000
4. FINAL - 268 MSL TREE



- KBVY - BEVERLY MUNI
BEVERLY, MA
RNAV (GPS) RWY 27 AMDT 1
LNAV FINAL 1:100,000
5. FINAL - 357 MSL AAO
6. STEPDOWN - 275 MSL WATER TOWER
9. CIRC CAT A/B - 292 MSL BUSH
10. CIRC CAT C - 454 MSL TOWER
11. CIRC CAT D - 511 MSL STACK



TERMINAL AIRSPACE DATA REQUIREMENTS

CITY: **BEVERLY**

STATE: **MA**

AIRPORT NAME: **BEVERLY MUNI**

ID: **KBVY**

PROCEDURE: **RNAV (GPS) RWY 27**

AMDT: **1**

DOCKET#: **NOT REQUIRED**
(96-AXX-X/Required/Not Required)

ALL DIST TO 1/100 NM; ELEV TO NEAREST FT; COORD TO 1/100 SEC; DEG TO 1/100 DG.

- | | | | |
|---|--|--------------------------------|---------------|
| 1. Distance from | <u>THLD</u> | to 1000' point | <u>3.07</u> |
| <small>(Enter THLD, FAF, ARP, FACILITY, as appropriate)</small> | | | |
| 2. Width of | <u>FINAL</u> | segment at 1000' point | <u>1.20</u> |
| <small>(Enter appropriate segment, final, intermediate, etc.)</small> | | | |
| 3. True Course of | <u>FINAL</u> | segment containing 1000' point | <u>254.35</u> |
| 4. High Terrain in | <u>FINAL</u> | segment containing 1000' point | <u>171</u> |
| 5. Distance from | <u>THLD</u> | to 1500' point | <u>4.62</u> |
| <small>(If 1500' point in PT maneuvering area or holding pattern note in remarks)</small> | | | |
| 6. Width of | <u>FINAL</u> | segment at 1500' point | <u>1.95</u> |
| 7. True Course of | <u>FINAL</u> | segment containing 1500' point | <u>254.35</u> |
| 8. High Terrain in | <u>FINAL</u> | segment containing 1500' point | <u>171</u> |
| 9. Threshold Coordinates (if straight-in) ... | <u>423459.14N</u> / <u>0705431.16W</u> | | |
| 10. ARP Coordinates | <u>423502.91N</u> / <u>0705458.12W</u> | | |
| 11. Runway Approach End and distance furthest from ARP | RWY | <u>16</u> | |
| | Distance | <u>0.53</u> | NM |
| 12. FAF Coordinates | <u>423617.40N</u> / <u>0704813.95W</u> | | |

REMARKS: Approach/Drawing attached.

ACTUAL THRESHOLD COORDINATES: 423459.81N/0705427.94W.