

Flight Procedure Tracking Form		Action: FLIGHT CHECK	Task Type: IAP	Date Open: 08/14/2014	Task #: 2014022038740801003	Request #: 20140220387408
Procedure: RNAV (GPS) RWY 18 AMDT 1D			Airport ID: KHSD	Airport: SUNDANCE		Reimbursable #: NO
City: OKLAHOMA CITY	ST: OK	GPS #:	Estimated Chart Date: 10/12/2017		FICO #:	
Fac ID: NOCHANGE		Fac. Type:			Specialist: STEVEN OWNBEY	
Procedure Review						
	Rec'd	Rel'd	Full Name	Comments		
Lead:	10/31/2016			<div>QUALITY</div> <div>10</div> <div>CHECKED</div>		
QA:						
Liaison:						
Procedure Comments:			ENROUTE-NON	Remark Type: INFORMATION		
ATTACHED FORMS: 8260-3, 8260-10, 8260-9. ASSIGNED MAG VAR, KHSD: OLD 7E - NEW 4E CONTACT: BEVERLY BORDY, (405) 954-8293 OR DON LANIER, (405) 954-8242. CHANGED PROCEDURE NAME FROM RNAV (GPS) RWY 17 TO RNAV (GPS) RWY 18				ARI SAVED 6/19/17		

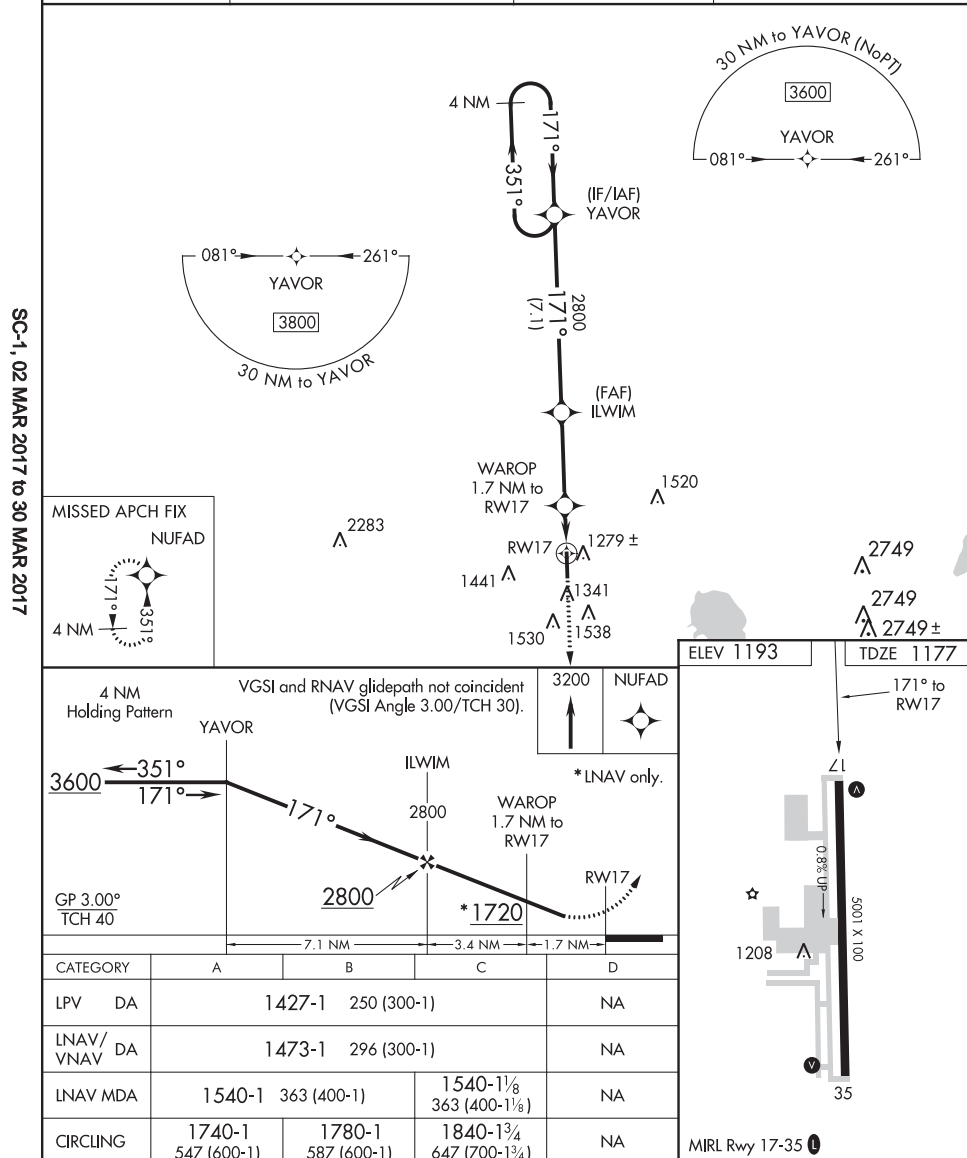
OLD

16259

RNAV (GPS) RWY 17

MISSED APPROACH:
Climb to 3200 direct
NUFAD and hold.

ASOS 120.975	OKE CITY APP CON 124.6 266.8	CLNC DEL 123.7	UNICOM 122.7 (CTAF) 0
------------------------	--	--------------------------	--



SUNDANCE (HSD)
RNAV (GPS) RWY 17

SC-1, 02 MAR 2017 to 30 MAR 2017

FIG

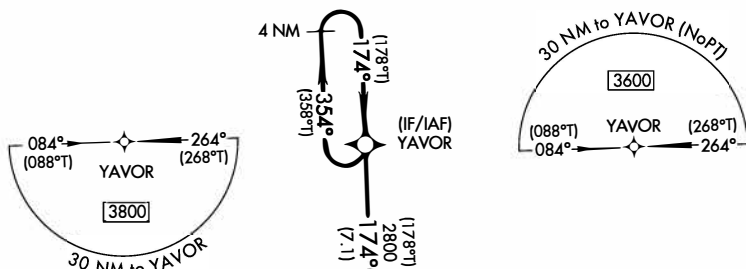
RNAV (GPS) RWY 18

SUNDANCE (HSD)

MISSED APPROACH:
Climb to 3200 direct
NUFAD and hold.

UNICOM
122.7 (CTAF) **L**

PROTOTYPE-NOT FOR NAVIGATION



MISSED APCH FIX
NUFAD

2283 

2749 A

 $^{2749}\Lambda$ $^{2749}\pm$

ELEV 1193

TDZE 1177

4 NM
Holding Pattern

VGSI and RNAV glidepath not coincident
(VGSI Angle 3.00/TCH 30).

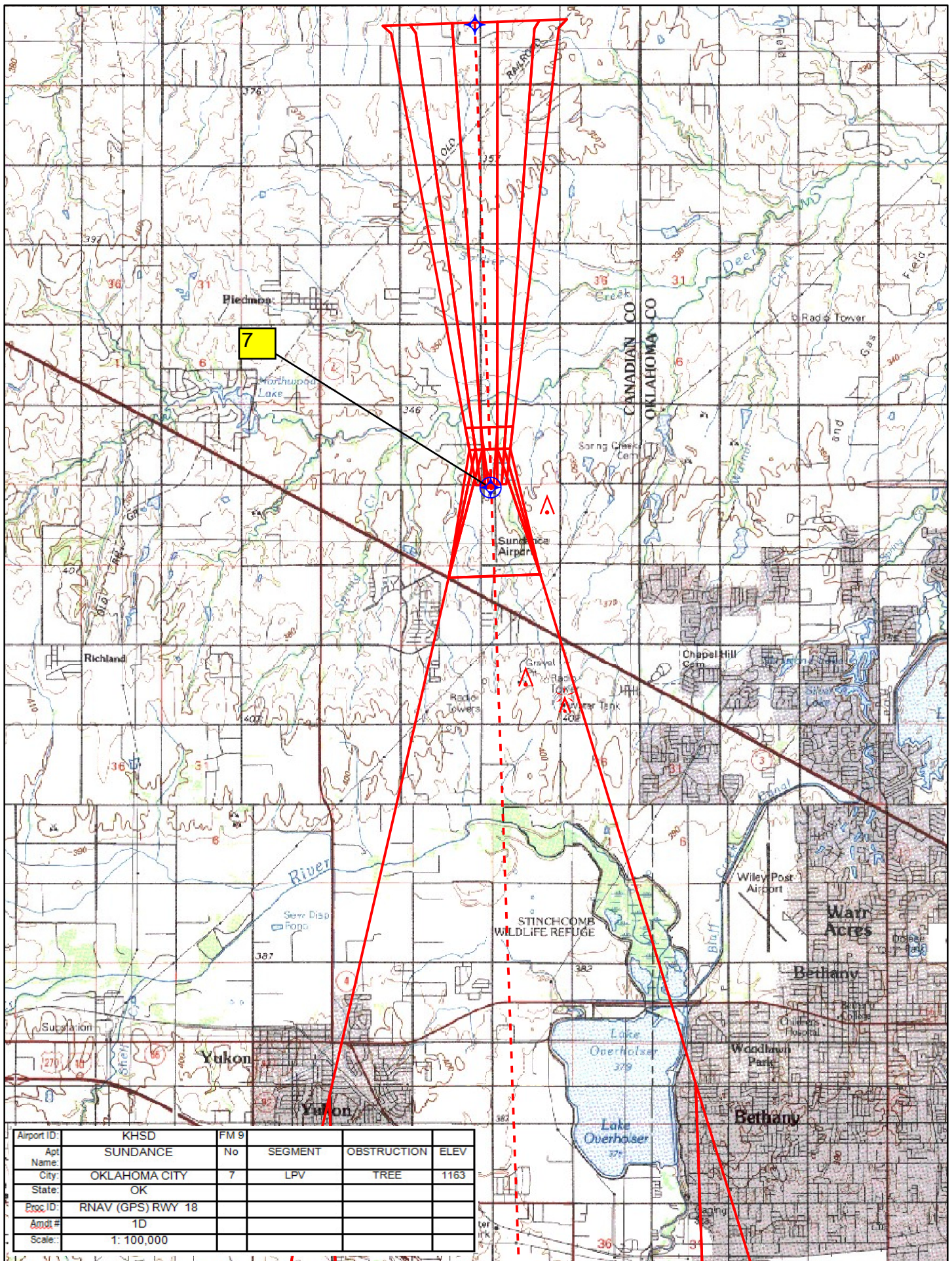
3200	NUFAD
------	-------

CATEGORY	A	B	C	D
LPV DA	1427-1 250 (300-1)			NA
LNAV/ VNAV DA	1473-1½ 296 (300-1½)			NA
LNAV MDA	1540-1 363 (400-1)		1540-1½ 363 (400-1½)	NA
CIRCLING	1740-1 547 (600-1)	1780-1 587 (600-1)	1840-1¾ 647 (700-1¾)	NA

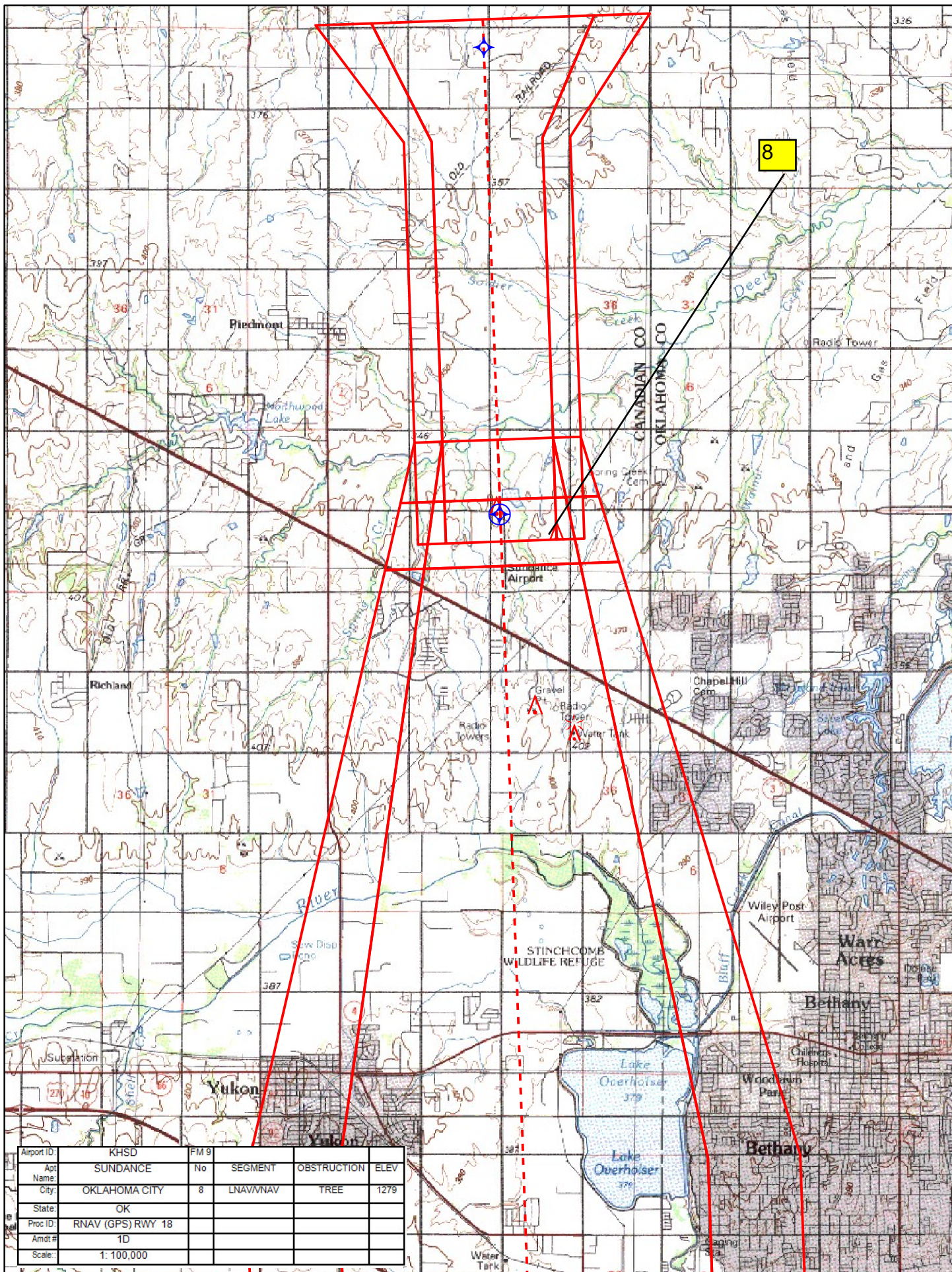
MIRL Rwy 17-35 **L**

SUNDANCE (HSD)

RNAV (GPS) RWY 18



Airport ID:	KHSD	FM 9			
Apt Name:	SUNDANCE	No	SEGMENT	OBSTRUCTION	ELEV
City:	OKLAHOMA CITY	7	LPV	TREE	1163
State:	OK				
Proc ID:	RNAV (GPS) RWY 18				
Alt #:	1D				
Scale:	1:100,000				

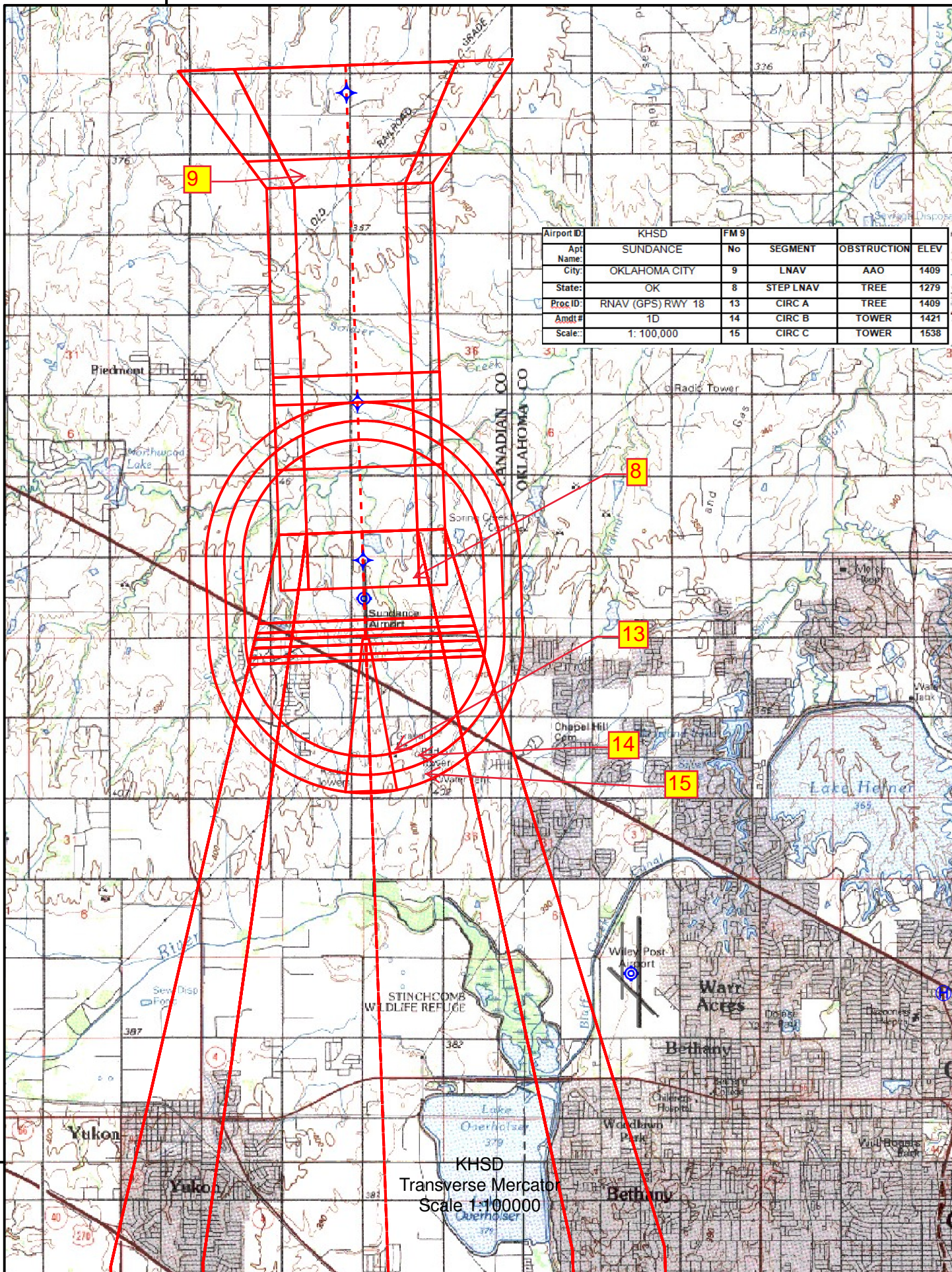


8

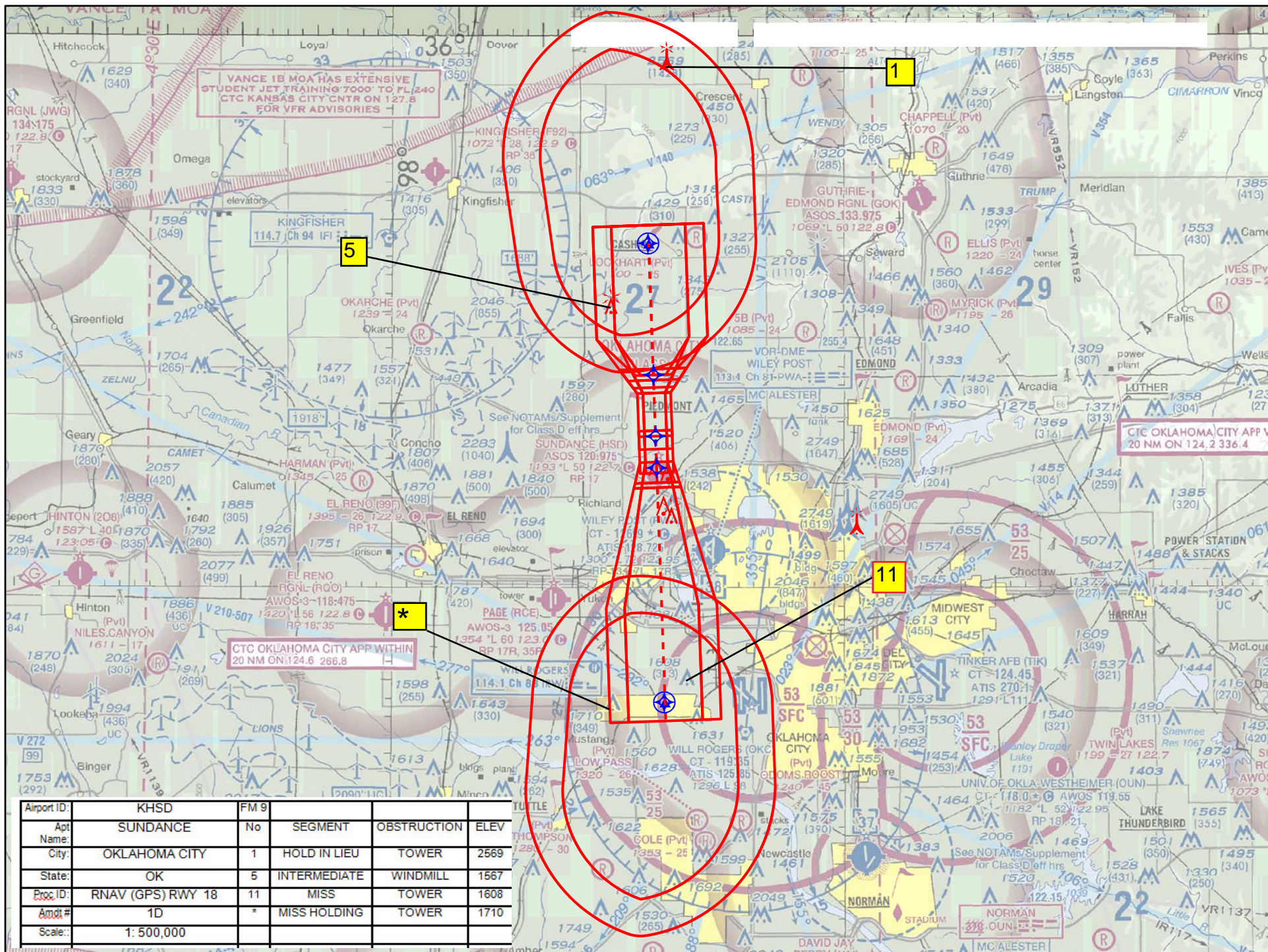
Airport ID:	KHSD	FM 9			
Apt Name:	SUNDANCE	No	SEGMENT	OBSTRUCTION	ELEV
City:	OKLAHOMA CITY	8	LNAV/NAV	TREE	1279
State:	OK				
Proc ID:	RNAV (GPS) RWY 18				
Amdt #	1D				
Scale:	1: 100,000				

97°45'0"W

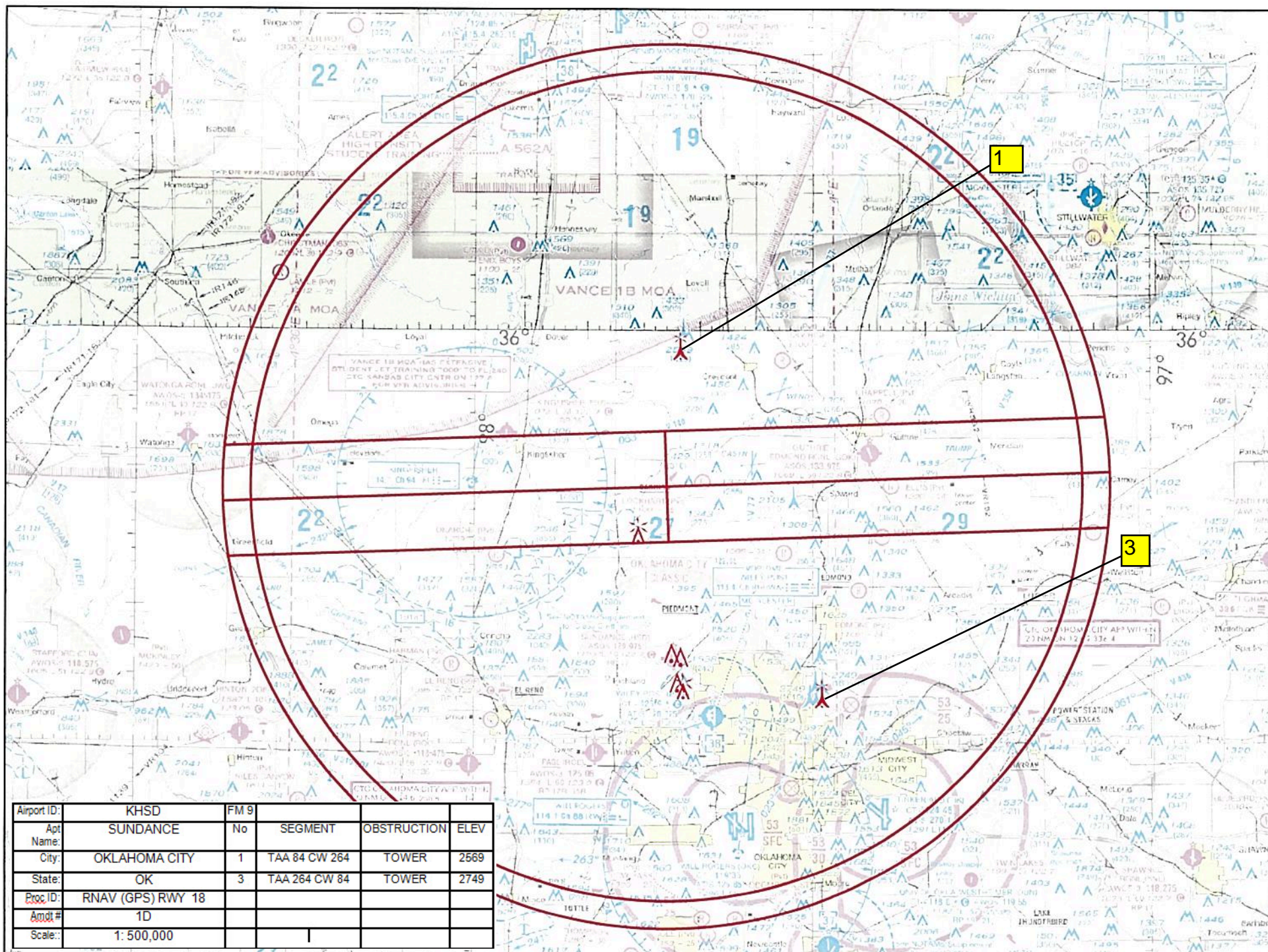
35°30'0"N



KHSD
Transverse Mercator
Scale 1:100000



Airport ID:	KHSD	FM 9			
Apt Name:	SUNDANCE	No	SEGMENT	OBSTRUCTION	ELEV
City:	OKLAHOMA CITY	1	HOLD IN LIEU	TOWER	2569
State:	OK	5	INTERMEDIATE	WINDMILL	1567
Proc ID:	RNAV (GPS) RWY 18	11	MISS	TOWER	1608
Amot #	1D	*	MISS HOLDING	TOWER	1710
Scale:	1: 500,000				



TERMINAL AIRSPACE DATA REQUIREMENTS

CITY: **OKLAHOMA CITY**

STATE: **OK**

AIRPORT NAME: **SUNDANCE**

ID: **KHSD**

PROCEDURE: **RNAV (GPS) RWY 18**

AMDT: **AMDT 1D**

DOCKET#: **NOT REQUIRED**

(96-AXX-X/Required/Not Required)

ALL DIST TO 1/100 NM; ELEV TO NEAREST FT; COORD TO 1/100 SEC; DEG TO 1/100 DG.

- | | | | |
|---|----------------------------------|--------------------------------|---------------|
| 1. Distance from | <u>THLD</u> | to 1000' point | <u>3.16</u> |
| <small>(Enter THLD, FAF, ARP, FACILITY, as appropriate)</small> | | | |
| 2. Width of | <u>FINAL</u> | segment at 1000' point | <u>1.20</u> |
| <small>(Enter appropriate segment, final, intermediate, etc.)</small> | | | |
| 3. True Course of | <u>FINAL</u> | segment containing 1000' point | <u>177.97</u> |
| 4. High Terrain in | <u>FINAL</u> | segment containing 1000' point | <u>1179</u> |
| 5. Distance from | <u>THLD</u> | to 1500' point | <u>4.85</u> |
| <small>(If 1500' point in PT maneuvering area or holding pattern note in remarks)</small> | | | |
| 6. Width of | <u>FINAL</u> | segment at 1500' point | <u>1.95</u> |
| 7. True Course of | <u>FINAL</u> | segment containing 1500' point | <u>177.97</u> |
| 8. High Terrain in | <u>FINAL</u> | segment containing 1500' point | <u>1179</u> |
| 9. Threshold Coordinates (if straight-in) ... | <u>353631.295N / 0974223.24W</u> | | |
| 10. ARP Coordinates | <u>353606.60N / 0974222.20W</u> | | |
| 11. Runway Approach End and distance furthest from ARP | RWY | <u>18</u> | |
| | Distance | <u>0.41</u> | NM |
| 12. FAF Coordinates | <u>354134.35N / 0974236.41W</u> | | |

REMARKS: Approach/Drawing attached.

YAVOR (IF/IAF) 354840.72N-0974251.96W RADIUS: 30 NM