

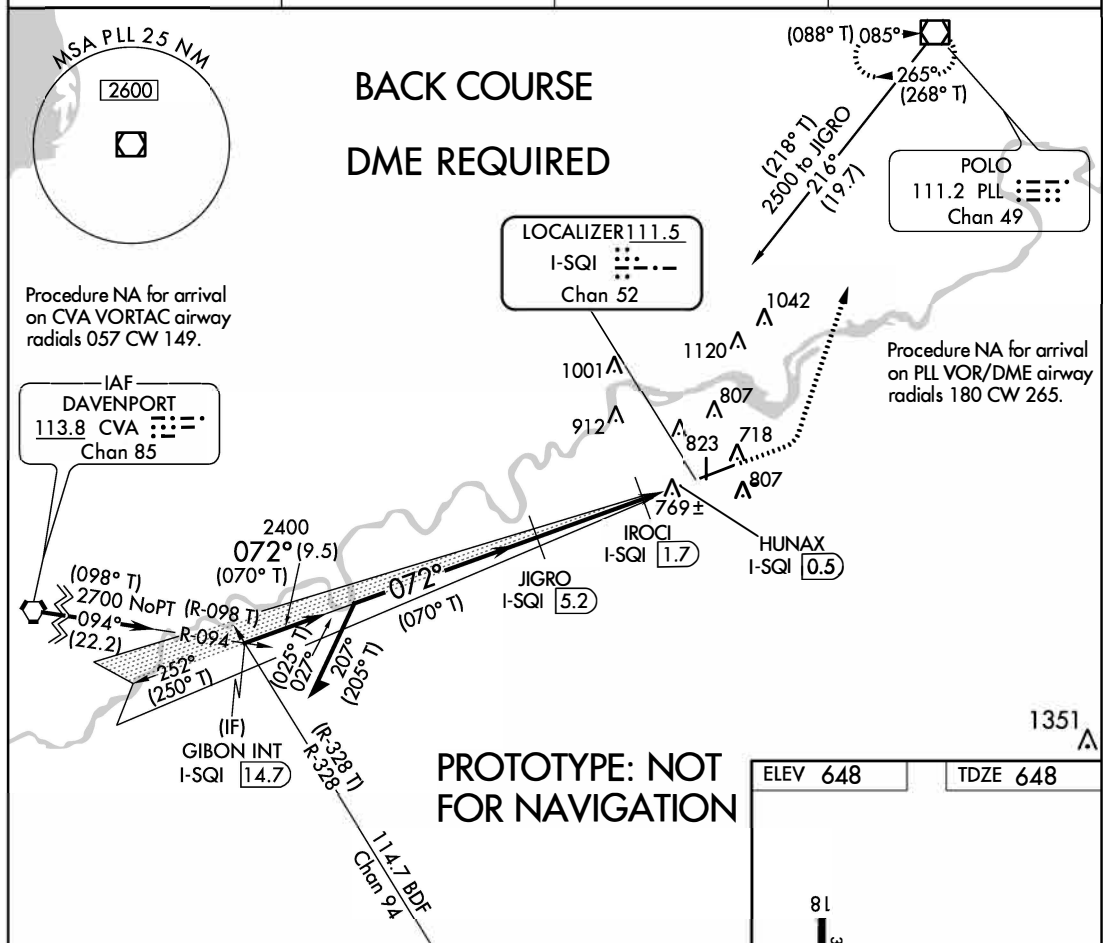
Flight Procedure Tracking Form		Action: FLIGHT CHECK	Task Type: IAP	Date Open: 02/12/2014	Task #: 2014021224922101001	Request #: 20140212249221
Procedure: LOC BC RWY 7 AMDT 6			Airport ID: KSQI	Airport: WHITESIDE CO ARPT-JOS H BITTORF FLD		Reimbursable #: NO
City: STERLING/ROCKFALL S	ST: IL	GPS #:	Estimated Chart Date: 12/07/2017		FICO #:	
Fac ID: SQI		Fac. Type: ILS			Specialist: GEORGETTE BARNETT	
Procedure Review						
	Rec'd	Rel'd	Full Name	Comments		
Lead:	04/19/2017					
QA:			J ZEDER 08/24/2017			
Liaison:						
Procedure Comments:			Remark Type: INFORMATION			
<p>PENDING DATA USED FOR KSQI PENDING DATA USED FOR I-SQI</p> <p>ASSIGNED MAG VAR: KSQU: OLD 1E - NEW 2W I-SQI: OLD 1E - NEW 2W</p> <p>CONTACT ROBERT HAMILTON, MANAGER SUB-TEAM B 405 954-4608</p>						

FIG

LOC/DME 1-SQI 111.5 Chan 52	APP CRS 072°	Rwy Idg 6499 TDZE 648 Apt Elev 648	NEW WHITESIDE COUNTY AIRPORT- JOSEPH H. BITTORF FIELD (SQI)	LOC BC RWY 7
---	------------------------	---	--	---------------------

<p>NA</p> <p>Rwy 7 helicopter visibility reduction below $\frac{3}{4}$ SM NA. DME required. Circling Rwy 36 NA at night.</p>	<p>MISSED APPROACH: Climb to 1500 then climbing left turn to 2700 direct PLL VOR/DME and hold.</p>
---	---

AWOS-3PT 119.175	ROCKFORD APP CON 126.0 327.0	CLNC DEL 128.0	UNICOM 123.0 (CTAF) 0
----------------------------	--	--------------------------	--



AUTOMATED AL-5388 LOC BC Rwy 7

Remain within 10 NM

JIGRO I-SQI 5.2

1500 2700 PLL

(250° T) 252°

2400 072° (070° T) 2400

Disregard glide slope indications.

3.00° TCH 49

1300

3.5 NM 1.2 0.5

701 36 680 ±

072° 5.4 NM from FAF

6499 X 150

25 45

CATEGORY	A	B	C	D
S-LOC 7	1020-1 372 (400-1)			
CIRCLING	1140-1 492 (500-1)		1160-1½ 512 (600-1½)	1480-2¾ 832 (900-2¾)

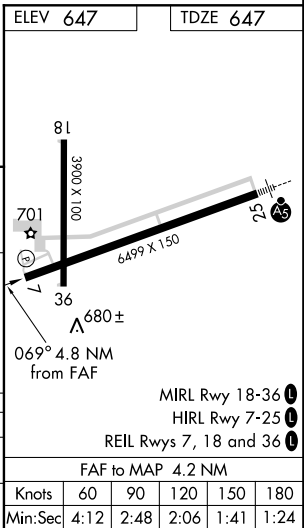
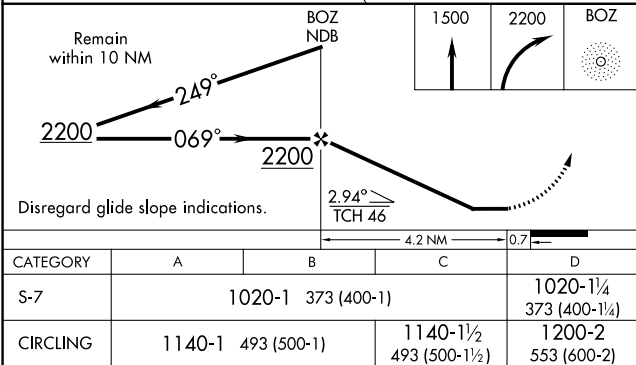
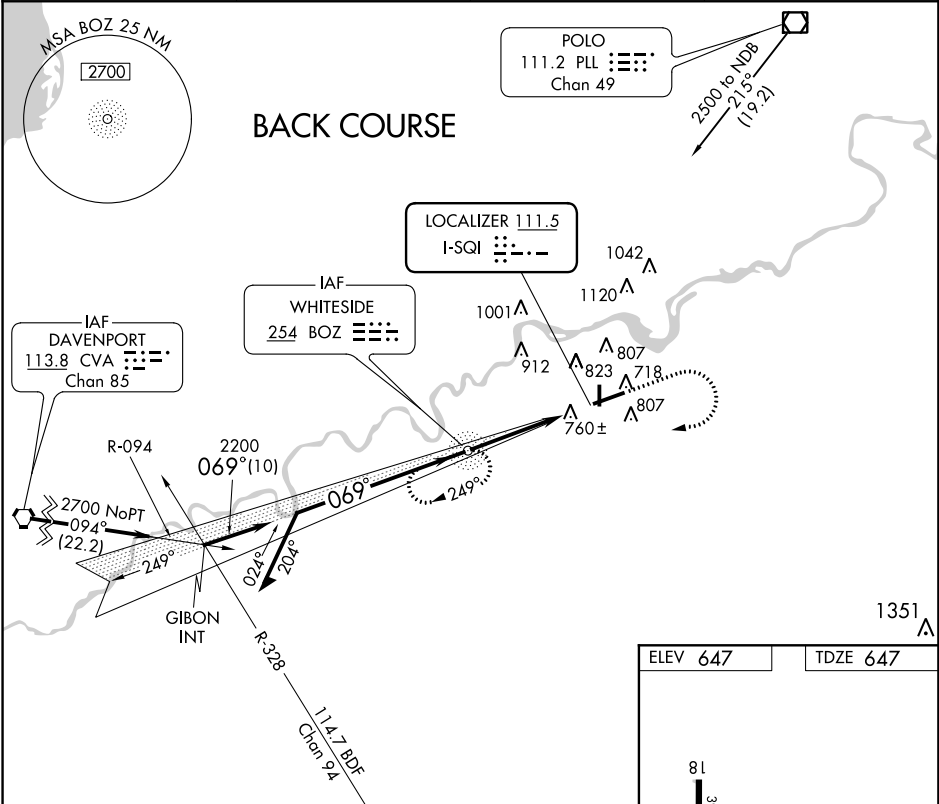
FAF to MAP 5.4 NM					
Knots	60	90	120	150	180
Min:Sec					

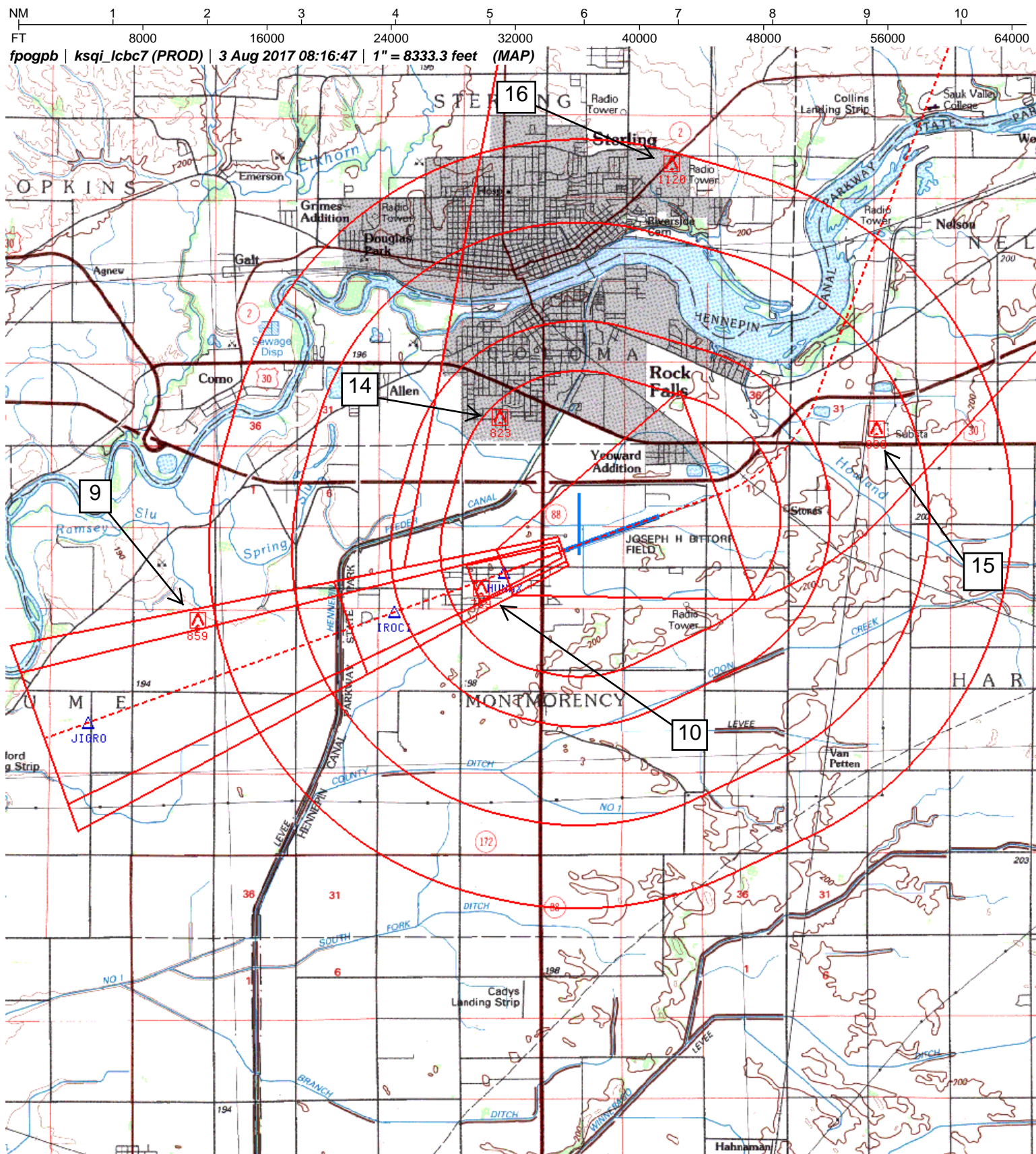
EC-3
21 AUG 2017
COMPILER: CG
REVIEWER:
DBL CHKR:
EFF: FIG
UID#: 5722

STERLING ROCKFALLS, ILLINOIS
Amdt 6 FIG

WHITESIDE COUNTY AIRPORT-JOSEPH H. BITTORF FIELD (SQ)
41°45'N-89°41'W LOC BC RWY 7

ADF required.		MISSED APPROACH: Climb to 1500 then climbing right turn to 2200 direct BOZ NDB and hold.	
AWOS-3PT 119.175	ROCKFORD APP CON 126.0 327.0	CLNC DEL 128.0	UNICOM 123.0 (CTAF) 1





Airport ID:	KSQI	Ref #	SEGMENTT	OBSTRUCTION	ELEV
Airport Name:	WHITESIDE COUNTY AIRPORT-JOSEPH H. BITTORF FIELD				
City:	STERLING ROCKFALLS	9	FINAL:	AAO	859
State:	IL	10	FINAL:	TREE	769
Procedure ID:	LOC BC RWY 7	14	CIRCLING CAT A/B	TANK	823
Amcl #	6	15	CIRCLING CAT C	TOWER	860
Scale:	1:100,000	18	CIRCLING CAT D	TOWER	1120

TERMINAL AIRSPACE DATA REQUIREMENTS

CITY: **STERLING ROCKFALLS**

STATE: **IL**

AIRPORT NAME: **WHITESIDE COUNTY AIRPORT-JOSEPH H. BITTORF FIELD**

ID: **KSQI**

PROCEDURE: **LOC BC RWY 7**

AMDT: **6**

DOCKET#: **NOT REQUIRED**
(96-AXX-X/Required/Not Required)

ALL DIST TO 1/100 NM; ELEV TO NEAREST FT; COORD TO 1/100 SEC; DEG TO 1/100 DG.

- | | | | |
|---|---------------------------------|--------------------------------|---------------|
| 1. Distance from | <u>THLD</u> | to 1000' point | <u>3.02</u> |
| <small>(Enter THLD, FAF, ARP, FACILITY, as appropriate)</small> | | | |
| 2. Width of | <u>FINAL</u> | segment at 1000' point | <u>0.87</u> |
| <small>(Enter appropriate segment, final, intermediate, etc.)</small> | | | |
| 3. True Course of | <u>FINAL</u> | segment containing 1000' point | <u>070.14</u> |
| 4. High Terrain in | <u>FINAL</u> | segment containing 1000' point | <u>653</u> |
| 5. Distance from | <u>THLD</u> | to 1500' point | <u>4.95</u> |
| <small>(If 1500' point in PT maneuvering area or holding pattern note in remarks)</small> | | | |
| 6. Width of | <u>FINAL</u> | segment at 1500' point | <u>1.29</u> |
| 7. True Course of | <u>FINAL</u> | segment containing 1500' point | <u>070.14</u> |
| 8. High Terrain in | <u>FINAL</u> | segment containing 1500' point | <u>653</u> |
| 9. Threshold Coordinates (if straight-in) ... | <u>414421.03N / 0894104.97W</u> | | |
| 10. ARP Coordinates | <u>414434.20N / 0894034.60W</u> | | |
| 11. Runway Approach End and distance furthest from ARP | RWY | <u>25</u> | |
| | Distance | <u>0.64</u> | NM |
| 12. FAF Coordinates | <u>414231.74N / 0894748.02W</u> | | |

REMARKS: Approach/Drawing attached.