

Flight Procedure Tracking Form		Action: FLIGHT CHECK	Task Type: IAP	Date Open: 02/01/2014	Task #: 2014020128156601001	Request #: 20140201281566
Procedure: RNAV (GPS) RWY 13 AMDT 0A			Airport ID: KTX2	Airport: CHASE FIELD INDUSTRIAL		Reimbursable #: NO
City: BEEVILLE	ST: TX	GPS #:	Estimated Chart Date: 03/02/2017		FICO #: 1137308	
Fac ID: N/A		Fac. Type:			Specialist: PHILLIP BRANDENBURG	
Procedure Review						
	Rec'd	Rel'd	Full Name	Comments		
Lead:	02/03/2014	10/24/2016	ALLAN WILL	QUALITY		
QA:	09/04/2014	09/04/2014	ERIC HILL	9 J.Baker 12/22/16		
Liaison:	09/04/2014	09/05/2014	MARY MCDONALD	CHECKED		
Procedure Comments:			Remark Type: INFORMATION			
ABBREVIATED AMENDMENT - CHANGED APT ID FROM K1XA2 TO KTX2. REQUEST FLIGHT CHECK TABLE TOP. CONTACT ALLAN WILL, 4059546981. <div style="text-align: right;">.ARI FILE SAVED. JB</div>						

AL-10607 (FAA)

BEEVILLE, TEXAS

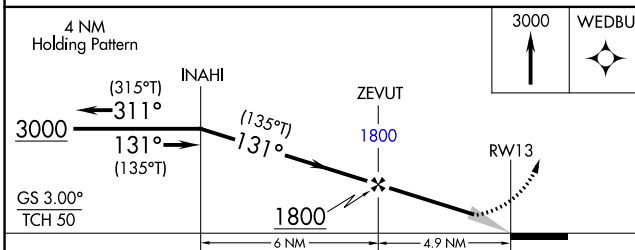
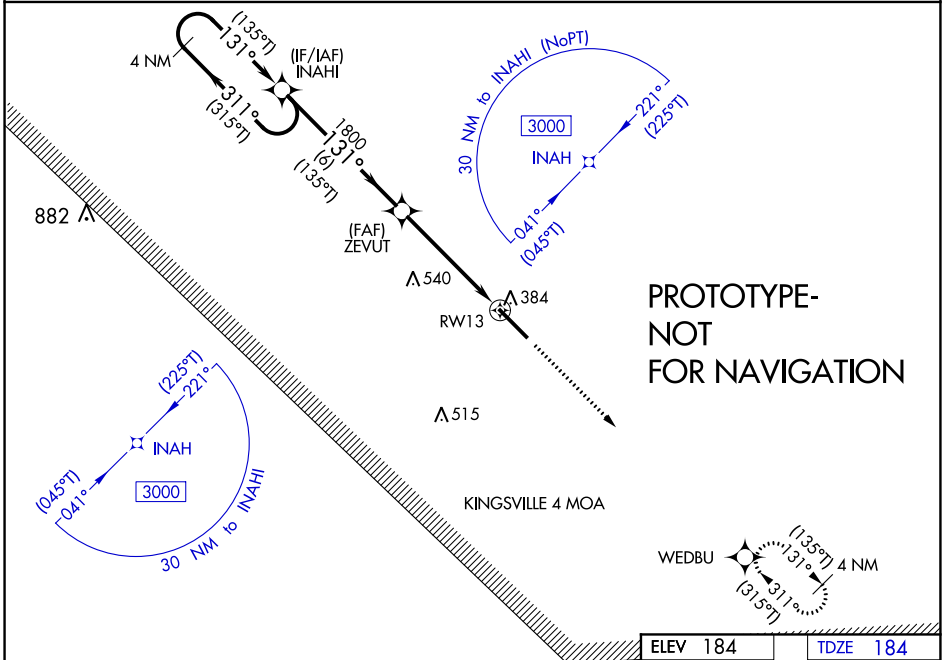
WAAS CH 42731 W13A	APP CRS 131°	Rwy Idg 8000 TDZE 184 Apt Elev 184
--	------------------------	---

RNAV (GPS) RWY 13
CHASE FIELD INDUSTRIAL (1XA2)

Baro-VNAV NA, Use Beeville altimeter setting; when not received, use Robstown altimeter setting and increase DA 68 feet and MDA's 80 feet; increase LPV all Cats, LNAV/VNAV all Cats ¼ mile, LNAV Cats C/D, and Circling Cat C visibility ½ mile. DME/DME RNP-0.3 NA. Activate HIRL Rwy 13-31 - 122.7. Use of Chase Field Industrial requires permission of the owner; use of this procedure requires specific authorization by FAA flight standards.

MISSED APPROACH:
Climb to 3000 direct
WEDBU and hold.

BEELVILLE AWOS-3
118.675



CATEGORY		A	B	C	D
LPV	DA	462-7 $\frac{7}{8}$ 278 (300-7 $\frac{7}{8}$)			
LNAV/ VNAV	DA	625-1 $\frac{1}{2}$ 441 (500-1 $\frac{1}{2}$)			
LNAV	MDA	740-1 556 (600-1)		740-1 $\frac{5}{8}$ 556 (600-1 $\frac{5}{8}$)	
CIRCLING		780-1 596 (600-1)		780-1 $\frac{5}{8}$ 596 (600-1 $\frac{5}{8}$)	780-2 596 (600-2)

BEEVILLE, TEXAS

28°22'N-97°40'W

CHASE FIELD INDUSTRIAL (1XA2)
RNAV (GPS) RWY 13

Orig-A FIG

OLD

BEEVILLE, TEXAS

AL-10607 (FAA)

FIG

WAAS CH 42731 RW13A	APP CRS 131°	Rwy Idg THRE Apt Elev	8000 182 184
---	------------------------	-----------------------------	---

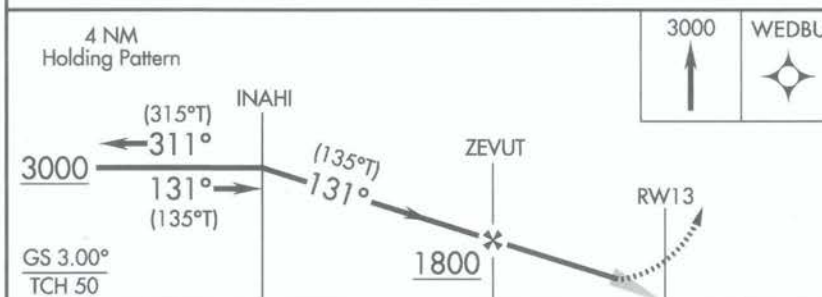
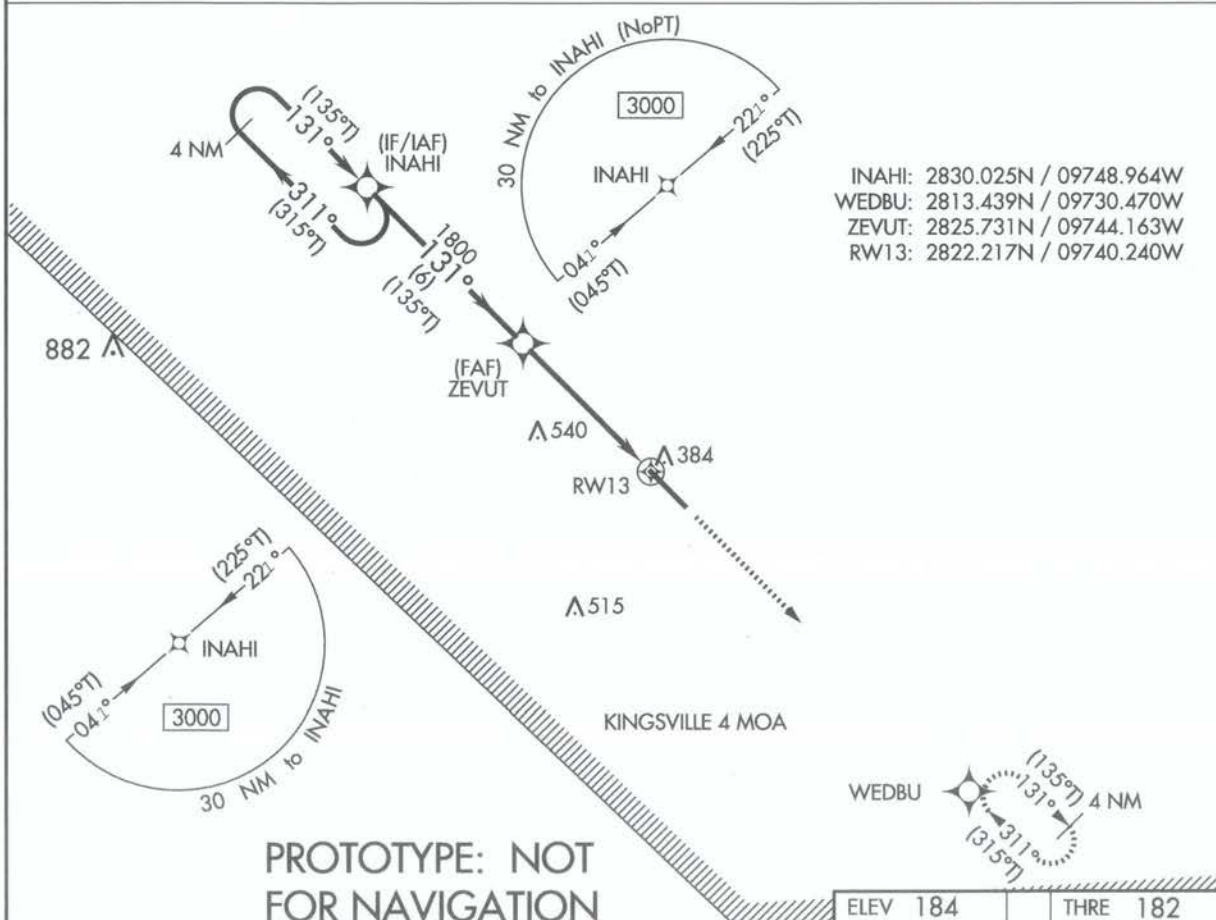
RNAV (GPS) RWY 13 CHASE FIELD INDUSTRIAL (1XA2)

NA

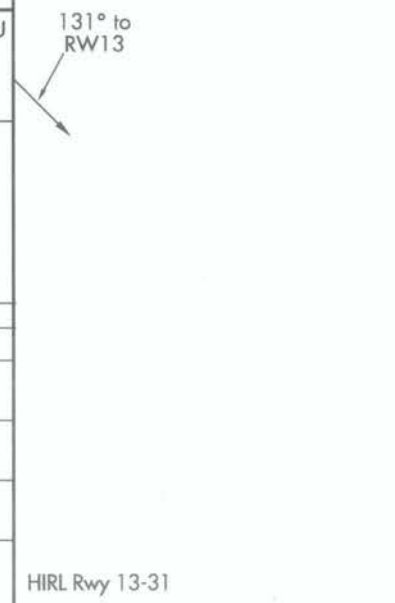
Baro-VNAV NA. DME/DME RNP-0.3 NA. Activate HIRL Rwy 13-31 - 122.7

Use Beeville altimeter setting; when not received, use Robstown altimeter setting and increase DAS 68 feet and MDAS 80 feet; increase LPV all Cats, LNAV/VNAV all Cats 1/4 mile, LNAV Cats C/D, and Circling Cat C visibility 1/8 mile.

MISSED APPROACH:
Climb to 3000 direct WEDBU and hold.



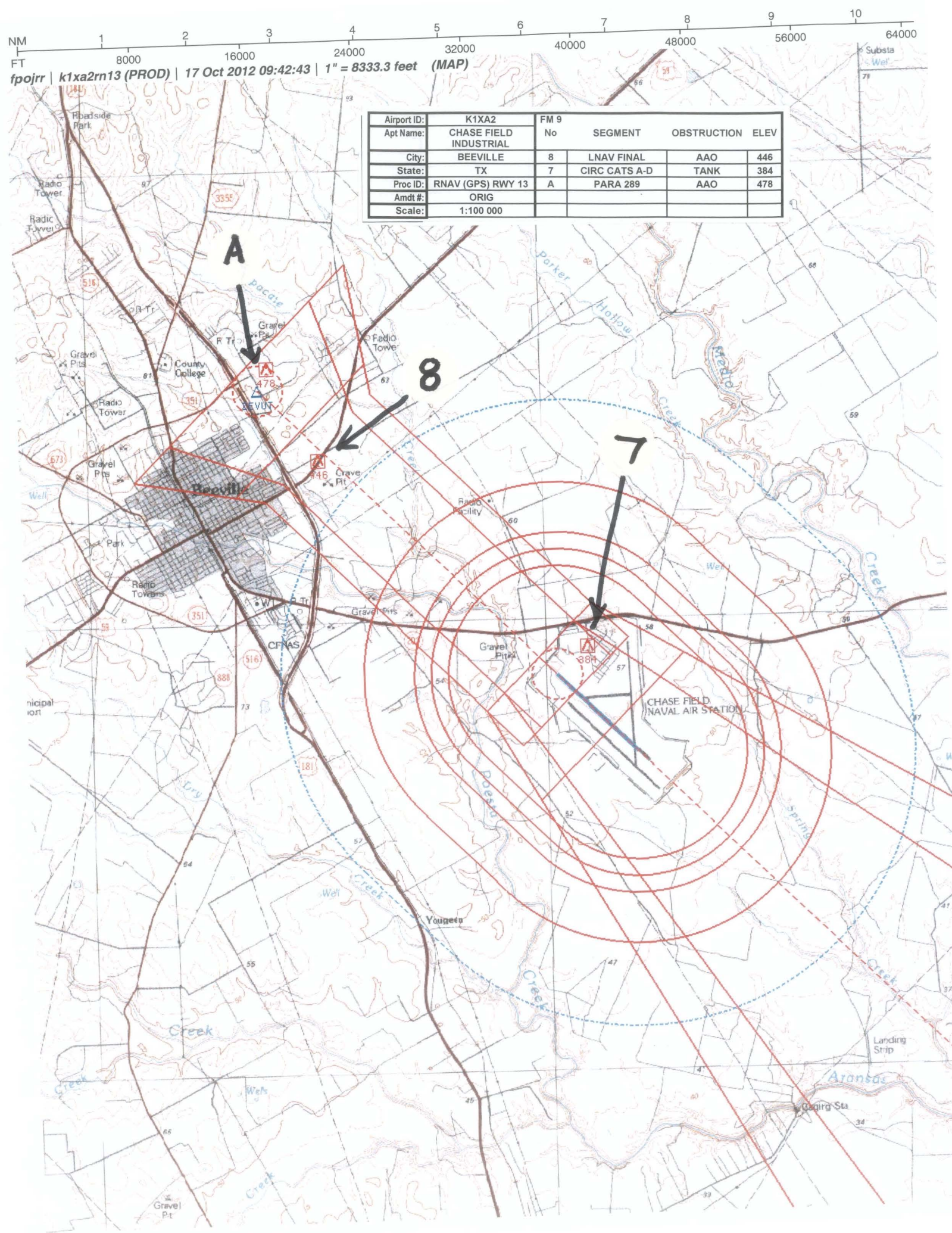
CATEGORY	A	B	C	D
LPV DA	460-7/8 278 (300-7/8)			
LNAV/VNAV DA	623 - 1 1/2 441			
LNAV MDA	740-1 558 (600-1)	740-1 5/8 558 (600-1)		
CIRCLING	780-1 596 (600-1)	780-1 5/8 596 (600-1)	780-2 596 (600-2)	



BEEVILLE, TEXAS
Orig FIG

28°22'N-97°40'W

CHASE FIELD INDUSTRIAL (1XA2)
RNAV (GPS) RWY 13



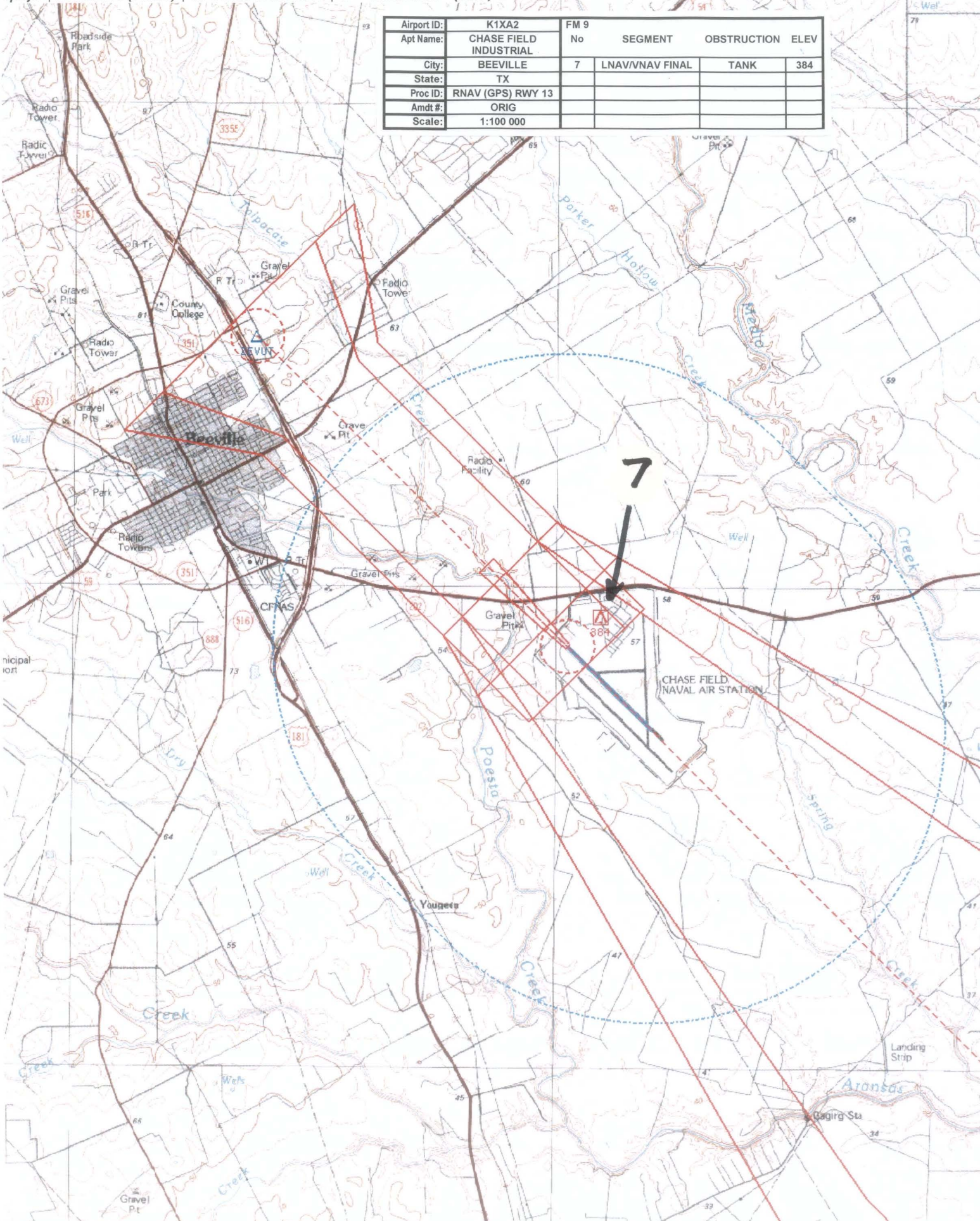
NM 1 2 3 4 5 6 7 8 9 10
FT 8000 16000 24000 32000 40000 48000 56000 64000
fpojrr | k1xa2rn13 (PROD) | 17 Oct 2012 09:42:43 | 1" = 8333.3 feet (MAP)

Airport ID:	K1XA2	FM 9			
Apt Name:	CHASE FIELD INDUSTRIAL	No	SEGMENT	OBSTRUCTION	ELEV
City:	BEEVILLE	8	LNAV FINAL	AAO	446
State:	TX	7	CIRC CATS A-D	TANK	384
Proc ID:	RNAV (GPS) RWY 13	A	PARA 289	AAO	478
Amdt #:	ORIG				
Scale:	1:100 000				

NM 1 2 3 4 5 6 7 8 9 10
FT 8000 16000 24000 32000 40000 48000 56000 64000

fpojrr | k1xa2rn13 (PROD) | 17 Oct 2012 09:43:44 | 1" = 8333.3 feet (MAP)

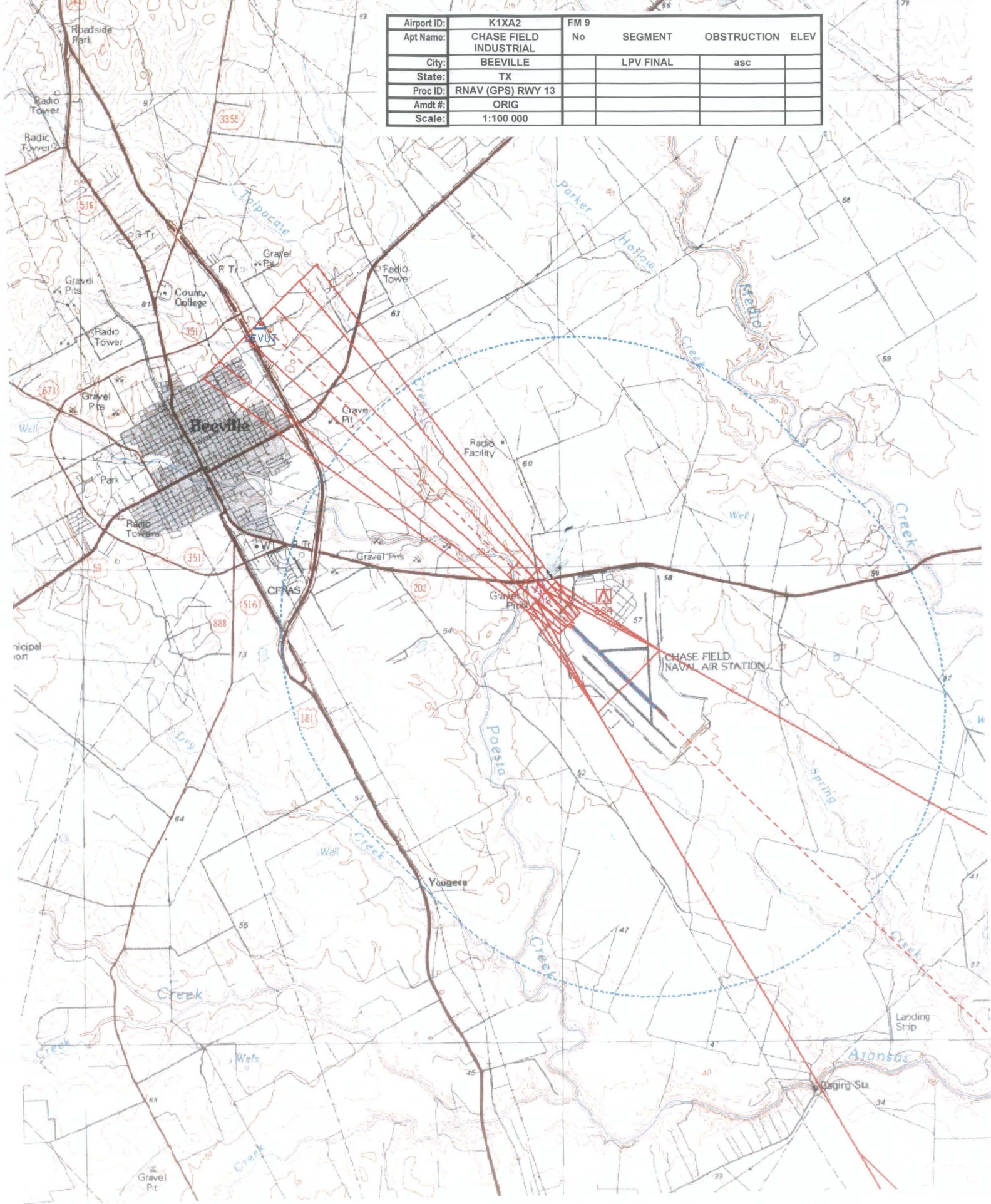
Airport ID:	K1XA2	FM 9			
Apt Name:	CHASE FIELD INDUSTRIAL	No	SEGMENT	OBSTRUCTION	ELEV
City:	BEEVILLE	7	LNAV/VNAV FINAL	TANK	384
State:	TX				
Proc ID:	RNAV (GPS) RWY 13				
Amdt #:	ORIG				
Scale:	1:100 000				



NM 1 2 3 4 5 6 7 8 9 10
FT 8000 16000 24000 32000 40000 48000 56000 64000

fpojrr | k1xa2rn13 (PROD) | 17 Oct 2012 09:56:26 | 1" = 8333.3 feet (MAP)

Airport ID:	K1XA2	FM 9			
Apt Name:	CHASE FIELD INDUSTRIAL	No	SEGMENT	OBSTRUCTION	ELEV
City:	BEEVILLE		LPV FINAL	asc	
State:	TX				
Proc ID:	RNAV (GPS) RWY 13				
Amdt #:	ORIG				
Scale:	1:100 000				



98°15'0"W

98°0'0"W

97°45'0"W

97°30'0"W

97°15'0"W

Airport ID:	K1XA2	FM 9			
Apt Name:	CHASE FIELD INDUSTRIAL	No	SEGMENT	OBSTRUCTION	ELEV
City:	BEEVILLE	3	TAA: 22CW041	TOWER	882
State:	TX				
Proc ID:	RNAV (GPS) RWY 13				
Amdt #:	ORIG				
Scale:	1:700 000				

29°0'0"N

28°45'0"N

28°30'0"N

28°15'0"N

28°0'0"N

27°45'0"N

Transverse Mercator
Scale 1:700000

98°30'0"W

98°15'0"W

98°0'0"W

97°45'0"W

97°30'0"W

Airport ID:	K1XA2	FM 9			
Apt Name:	CHASE FIELD INDUSTRIAL	No	SEGMENT	OBSTRUCTION	ELEV
City:	BEEVILLE	1	TAA: 04CW221	TOWER	1007
State:	TX				
Proc ID:	RNAV (GPS) RWY 13				
Amdt #:	ORIG				
Scale:	1:700 000				

29°15'0"N

29°0'0"N

28°45'0"N

28°30'0"N

28°15'0"N

28°0'0"N

27°45'0"N

1

beeville
Transverse Mercator
Scale 1:700000



Federal Aviation Administration

Memorandum

Date: JAN 11, 2017

To: FILE

From: George E. Davis, Manager, Instrument Flight Procedures Team 1, AJV-5410 **ALLAN WILL**

Digitally signed by
Jan 11, 2017

Subject: ACTION: Documentation of a Categorical Exclusion Under Order 1050.1

A. Proposed Action: Establish a special instrument approach procedure (IAP) titled RNAV (GPS) Rwy 13, Orig-A, Chase Field Industrial (KTX2), Beeville, TX.

B. This action qualifies for consideration as a categorically excluded action as it falls under the following specific categorical exclusion provision: Publishing of Instrument Procedures conducted over noise sensitive areas; modifications to currently approved instrument procedures conducted below 3,000 feet AGL that do not increase minimum altitudes and landing minima.

C. Other supporting information:

ASO-220 Memorandum dated April 5, 1989

AFS-1 Memorandum dated September 21, 1994

AVN-100 Memorandum dated July 23, 1996

D. Review and analysis by the FAA does not indicate that any extraordinary circumstances listed in Order 1050.1 or other reasons exist that would cause undersigned to believe that the proposed action might have the potential for causing significant environmental impacts upon its implementation. The proposed action does not individually or cumulatively have a significant effort on the human environment and, therefore, is determined to be categorically excluded from further environmental documentation according to Order 1050.1.

Date: 02/24/2011

TERMINAL AIRSPACE DATA REQUIREMENTS

CITY: BEEVILLE

STATE: TX

AIRPORT NAME: CHASE FIELD INDUSTRIAL

ID: KTX2

PROCEDURE: RNAV (GPS) RWY 13 (SPECIAL

AMDT: ORIG-A

DOCKET # :

(96-AXX-X/Required/Not Required)

ALL DIST TO 1/100 NM; ELEV TO NEAREST FT; COORD TO 1/100 SEC; DEG TO 1/100 DG.

- | | | | |
|---|------------|--------------------------------|-------------|
| 1. Distance from | THLD | to 1000' point | 2.25 |
| <small>(Enter THLD, FAF, ARP, FACILITY, as appropriate)</small> | | | |
| 2. Width of | FINAL | segment at 1000' point | 1.20 |
| <small>(Enter appropriate segment , final, intermediate, etc.)</small> | | | |
| 3. True Course of | FINAL | segment containing 1000' point | 135.36 |
| 4. High Terrain in | FINAL | segment containing 1000' point | 266 |
| 5. Distance from | THLD | to 1500' point | 4.32 |
| <small>(If 1500' point in PT maneuvering area or holding pattern note in remarks)</small> | | | |
| 6. Width of | FINAL | segment at 1500' point | 1.57 |
| 7. True Course of | FINAL | segment containing 1500' point | 135.36 |
| 8. High Terrain in | FINAL | segment containing 1500' point | 266 |
| 9. Threshold Coordinates (if straight-in) ... | 282213.02N | / | 0974014.39W |
| 10. ARP Coordinates | 282136.00N | / | 0973936.00 |
| 11. Runway Approach End and distance furthest from ARP.....RWY | | | 13 |
| | | Distance | 0.84 NM |
| 12. FAF Coordinates | 282543.88N | / | 0974409.75W |
| <small>(Click to Select)</small> | | | |

REMARKS: