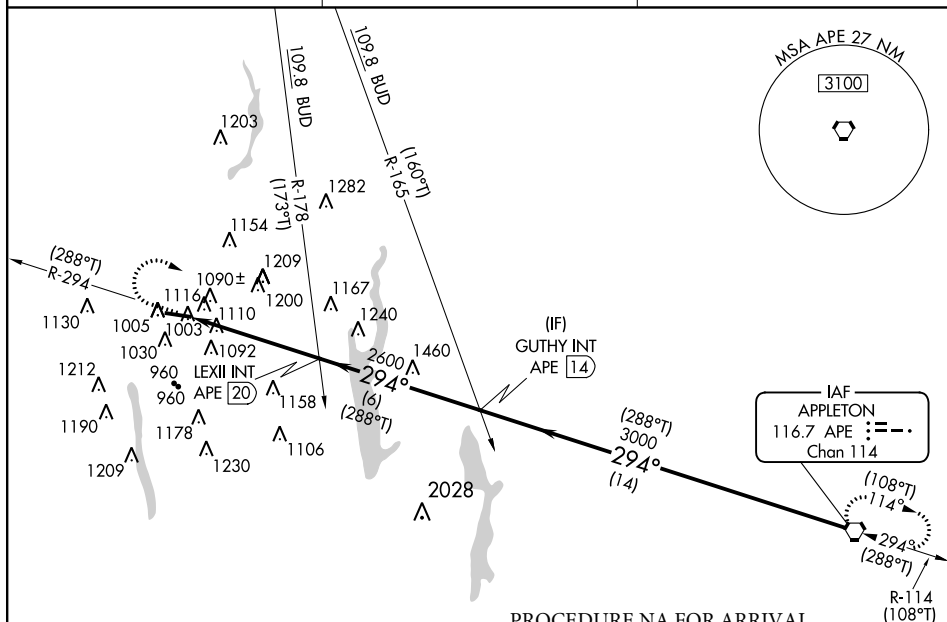


<b>Flight Procedure Tracking Form</b>		<b>Action:</b> AMENDMENT	<b>Task Type:</b> IAP	<b>Date Open:</b> 03/21/2016	<b>Task #:</b> 2014011510245301002	<b>Request #:</b> 20140115102453
<b>Procedure:</b> APPROACH VOR RWY 28 AMDT 1			<b>Airport ID:</b> KDLZ	<b>Airport:</b> DELAWARE MUNI - JIM MOORE FIELD		<b>Reimbursable #:</b> NO
<b>City:</b> DELAWARE	<b>ST:</b> OH	<b>GPS #:</b>	<b>Estimated Chart Date:</b> 01/05/2017		<b>FICO #:</b>	
<b>Fac ID:</b> N/A		<b>Fac. Type:</b>			<b>Specialist:</b> DANIEL OLSON	
<b>Procedure Review</b>						
	<b>Rec'd</b>	<b>Rel'd</b>	<b>Full Name</b>	<b>Comments</b>		
<b>Lead:</b>	07/14/2016					
<b>QA:</b>			J ZEDER 09/22/2016 16			
<b>Liaison:</b>						
<b>Procedure Comments:</b>			<b>Remark Type:</b> INFORMATION			
PENDING AIRPORT DATA USED.  CONTACT: JACOB POWERS AJV-5421/PETER GETZ AJV-5422/THOMAS KIRKPATRICK, AJV-5423, 405.954.8702/4919/0654						

FIG

VOR RWY 28  
DELAWARE MUNI-JIM MOORE FIELD (DLZ)

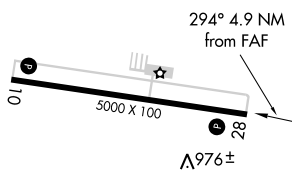
**MISSED APPROACH:** Climb to 3100 then right turn direct APE VORTAC and hold.

UNICOM  
122.7 (CTAF) **L**

PROCEDURE NA FOR ARRIVAL  
ON APE VORTAC AIRWAY  
RADIALS 235 CW 335

PROTOTYPE-NOT FOR NAVIGATION

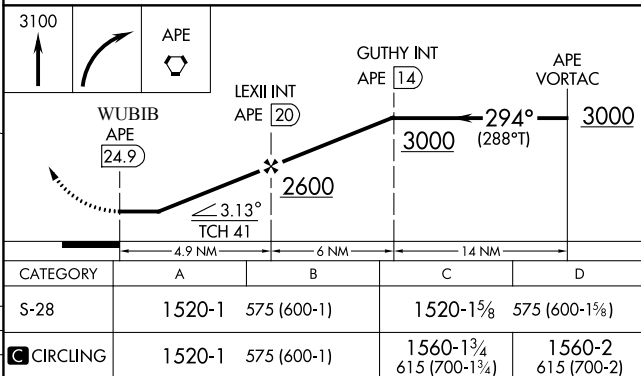
\_\_\_\_\_



REIL Rwy 10 and 28 **L**  
MIRL Rwy 10-28 **L**

FAF to MAP 4.9 NM

Knots	60	90	120	150	180
Min:Sec	4:52	3:14	2:26	1:57	1:37



DELAWARE MUNI-JIM MOORE FIELD (DLZ)

40°17'N-83°07'W

VOR RWY 28

DELAWARE, OHIO

AL-6258 (FAA)

15176

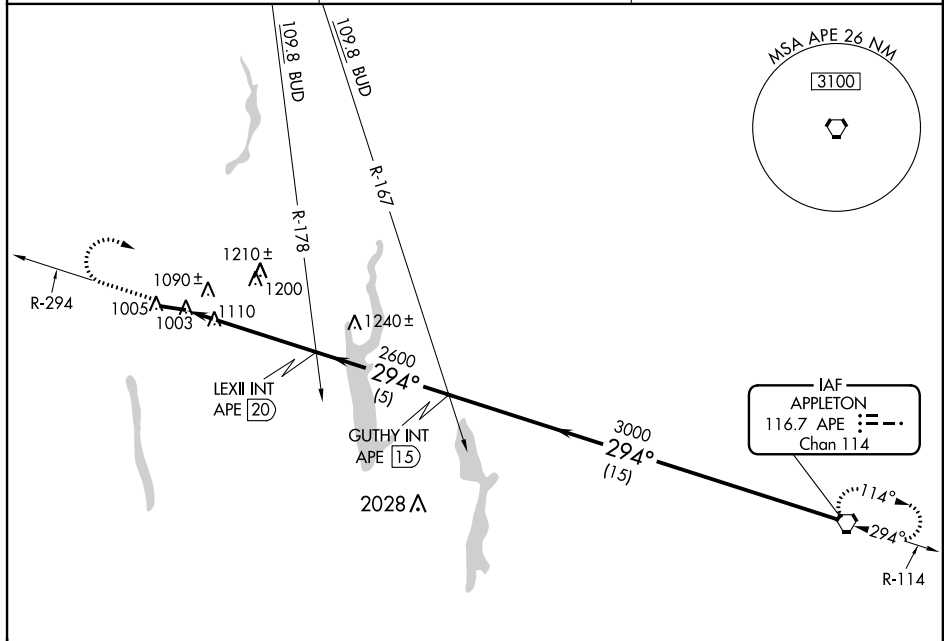
VORTAC APE <b>116.7</b> Chan <b>114</b>	APP CRS <b>294°</b>	Rwy Idg TDZE <b>945</b> Apt Elev <b>945</b>
---	------------------------	---

VOR RWY 28

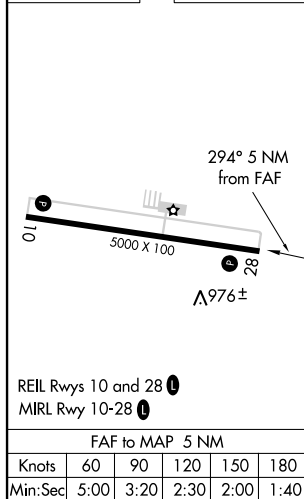
DELAWARE MUNI-JIM MOORE FIELD (DLZ)

<p>▼ Obtain local altimeter setting on CTAF; when not received, use Port Columbus Intl altimeter setting.</p> <p>▲ NA</p>	<p>MISSED APPROACH: Climb to 3000 then right turn direct APE VORTAC and hold.</p>
---	---

AWOS-3 <b>119.025</b>	COLUMBUS APP CON <b>125.95 317.775</b>	UNICOM <b>122.7 (CTAF) 0</b>
--------------------------	---	---------------------------------



ELEV <b>945</b>	TDZE <b>945</b>
-----------------	-----------------



3000

APE

LEXII INT APE (20)

3.04°

TCH 45

5 NM

5 NM

15 NM

GUTHY INT APE (15)

294°

3000

2600

APE VORTAC

3000

Procedure Turn NA

CATEGORY	A	B	C	D
S-28	1520-1 575 (600-1)	1520-1¼ 575 (600-1¼)	1520-1½ 575 (600-1½)	1520-1¾ 575 (600-1¾)
CIRCLING	1520-1 575 (600-1)	1520-1¼ 575 (600-1¼)	1520-1½ 575 (600-1½)	1520-2 575 (600-2)
PORT COLUMBUS INTL ALTIMETER SETTING MINIMUMS				
S-28	1580-1 635 (700-1)	1580-1¼ 635 (700-1¼)	1580-1¾ 635 (700-1¾)	1580-2 635 (700-2)
CIRCLING	1580-1 635 (700-1)	1580-1¼ 635 (700-1¼)	1580-1¾ 635 (700-1¾)	1580-2 635 (700-2)

DELAWARE, OHIO  
Orig-A 05OCT00

DELAWARE MUNI-JIM MOORE FIELD (DLZ)

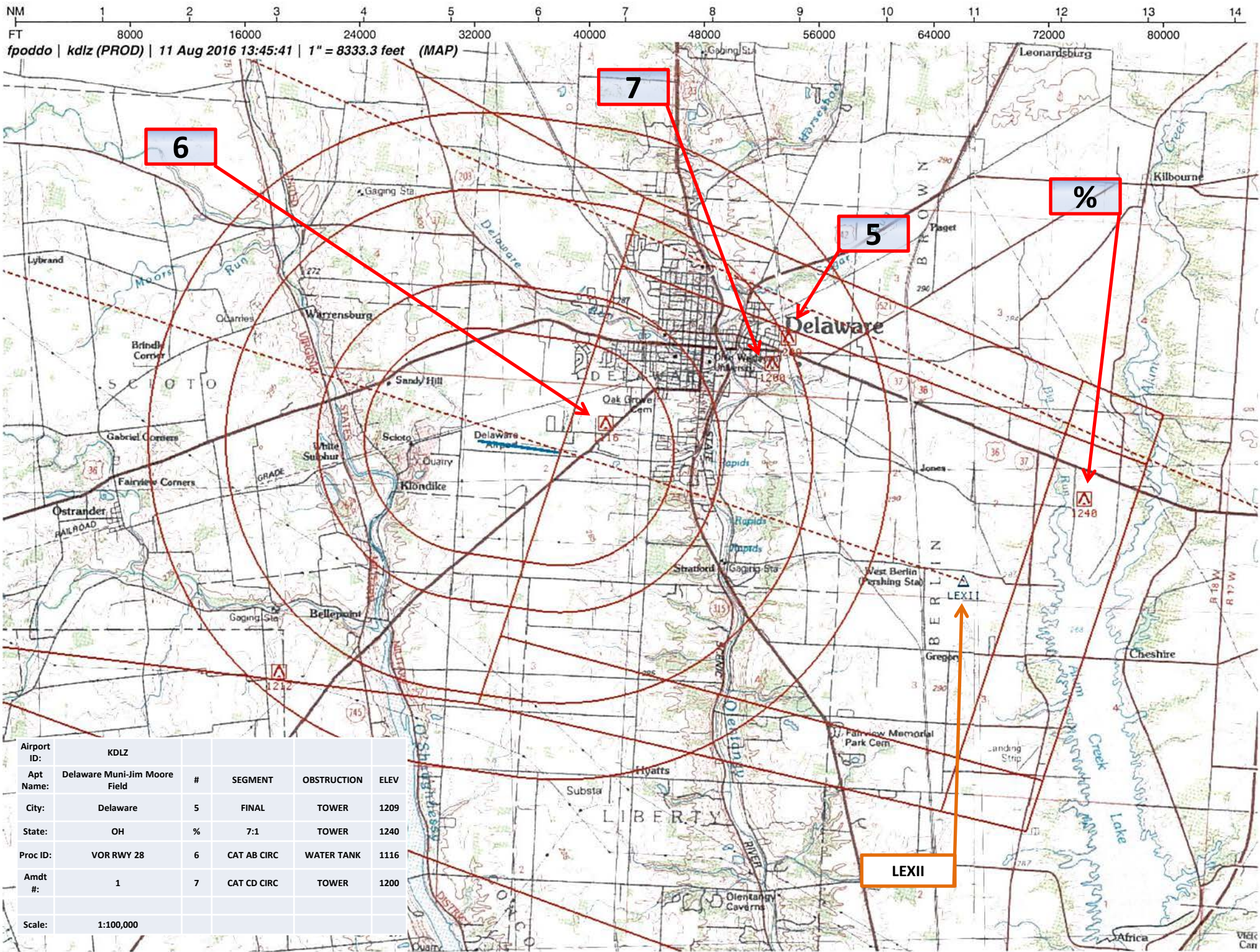
40°17'N-83°07'W

VOR RWY 28

EC-2, 21 JUL 2016 to 18 AUG 2016

EC-2, 21 JUL 2016 to 18 AUG 2016











# TERMINAL AIRSPACE DATA REQUIREMENTS

CITY: **DELAWARE**

STATE: **OH**

AIRPORT NAME: **DELAWARE MUNI-JIM MOORE FIELD**

ID: **KDLZ**

PROCEDURE: **VOR RWY 28**

AMDT: **1**

DOCKET#: **NOT REQUIRED**

(96-AXX-X/Required/Not Required)

**ALL DIST TO 1/100 NM; ELEV TO NEAREST FT; COORD TO 1/100 SEC; DEG TO 1/100 DG.**

- |   |                                       |                                |               |
|---|---------------------------------------|--------------------------------|---------------|
| 1. Distance from  | <u>THLD</u>                           | to 1000' point                 | <u>2.86</u>   |
| <small>(Enter THLD, FAF, ARP, FACILITY, as appropriate)</small>                           |                                       |                                |               |
| 2. Width of   | <u>FINAL</u>                          | segment at 1000' point         | <u>4.20</u>   |
| <small>(Enter appropriate segment, final, intermediate, etc.)</small>                     |                                       |                                |               |
| 3. True Course of   | <u>FINAL</u>                          | segment containing 1000' point | <u>288.05</u> |
| 4. High Terrain in  | <u>FINAL</u>                          | segment containing 1000' point | <u>958</u>    |
| 5. Distance from  | <u>THLD</u>                           | to 1500' point                 | <u>4.66</u>   |
| <small>(If 1500' point in PT maneuvering area or holding pattern note in remarks)</small> |                                       |                                |               |
| 6. Width of   | <u>FINAL</u>                          | segment at 1500' point         | <u>4.02</u>   |
| 7. True Course of   | <u>FINAL</u>                          | segment containing 1500' point | <u>288.05</u> |
| 8. High Terrain in  | <u>FINAL</u>                          | segment containing 1500' point | <u>958</u>    |
| 9. Threshold Coordinates (if straight-in) ...   | <u>401642.20N / 0830611.16W</u>       |                                |               |
| 10. ARP Coordinates .....   | <u>401646.40N / 0830648.20W</u>       |                                |               |
| 11. Runway Approach End and distance furthest from ARP .....                              | RWY                                   | <u>28</u>                      |               |
|   | Distance                              | <u>0.48</u>                    | NM            |
| 12. FAF Coordinates .....   | <u>LEXII 401513.26N / 0830008.08W</u> |                                |               |

**REMARKS: Approach/Drawing attached.**

**1500 POINT IN FINAL SEGMENT**