

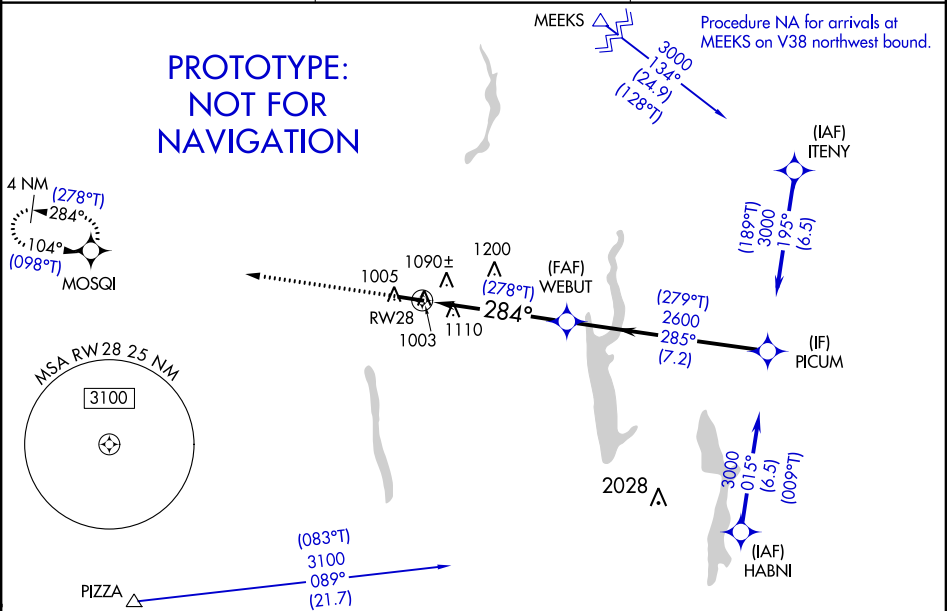
Flight Procedure Tracking Form		Action: AMENDMENT	Task Type: IAP	Date Open: 03/21/2016	Task #: 2014011510245301001	Request #: 20140115102453
Procedure: RNAV (GPS) RWY 28 AMDT 1			Airport ID: KDLZ	Airport: DELAWARE MUNI - JIM MOORE FIELD		Reimbursable #: NO
City: DELAWARE	ST: OH	GPS #:	Estimated Chart Date: 01/05/2017		FICO #:	
Fac ID: N/A		Fac. Type:			Specialist: DANIEL OLSON	
Procedure Review						
	Rec'd	Rel'd	Full Name	Comments		
Lead:	07/14/2016					
QA:			J ZEDER 09/22/2016 16			
Liaison:						
Procedure Comments:			Remark Type: INFORMATION			
ENROUTE-NON PENDING AIRPORT DATA USED. CONTACT: JACOB POWERS AJV-5421/PETER GETZ AJV-5422/THOMAS KIRKPATRICK, AJV-5423, 405.954.8702/4919/0654						

WAAS CH 50506 W28A	APP CRS 284°	Rwy Idg TDZE Apt Elev	5000 945 945
--	------------------------	-----------------------------	---

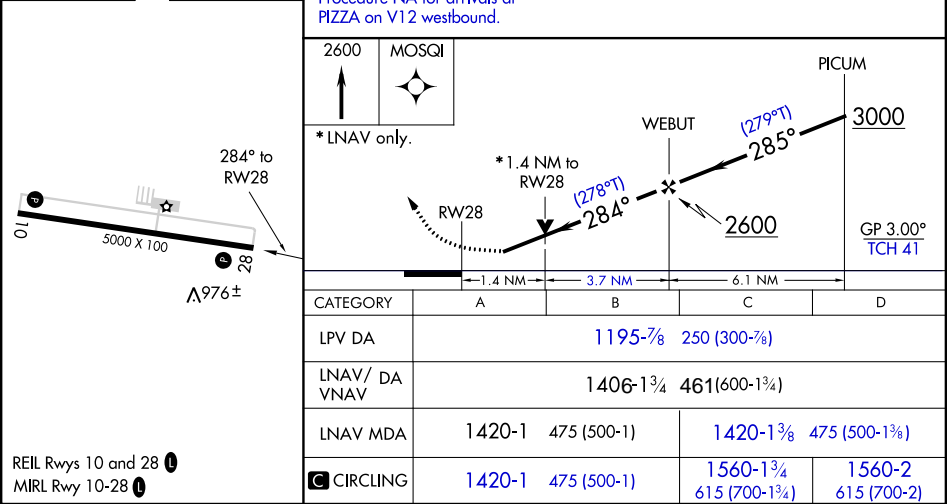
RNAV (GPS) RWY 28
DELAWARE MUNI-JIM MOORE FIELD (DLZ)

<p>⚠</p> <p>For uncompensated Baro-VNAV systems, LNAV/VNAV NA below -16°C (4°F) & above 54°C (130°F). DME/DME RNP-0.3 NA. Rwy 28 helicopter visibility reduction below ¼ SM NA.</p>	<p>MISSED APPROACH: Climb to 2600 direct MOSQI and hold.</p>
--	--

AWOS-3 119.025	COLUMBUS APP CON 125.95 317.775	UNICOM 122.7 (CTAF) ①
--------------------------	---	---------------------------------



ELEV 945	TDZE 945
----------	----------



DELAWARE, OHIO

AL-6258 (FAA)

OLD

15176

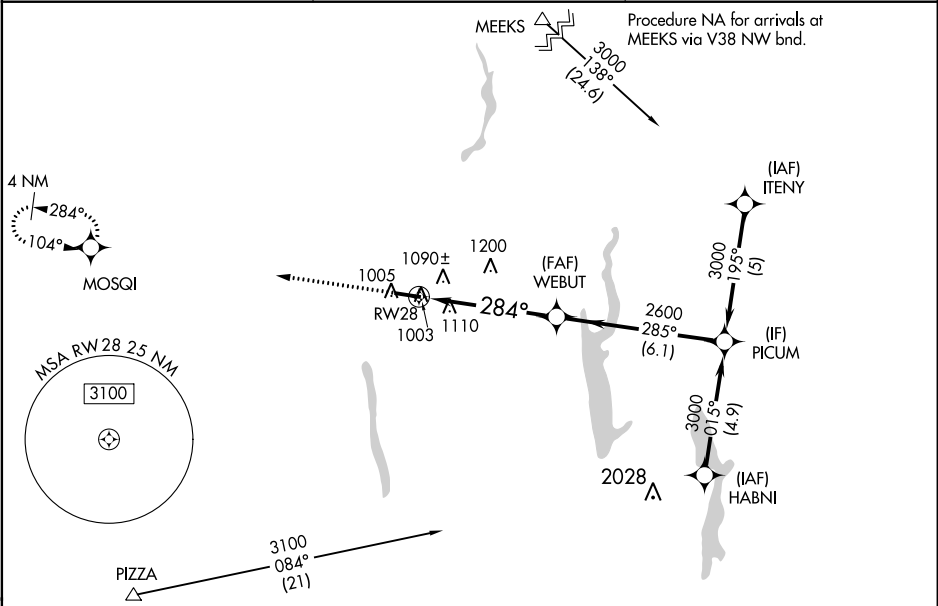
WAAS CH 50506 W28A	APP CRS 284°	Rwy Idg 5000 TDZE 945 Apt Elev 945
--	------------------------	---

RNAV (GPS) RWY 28
DELAWARE MUNI-JIM MOORE FIELD (DLZ)

▼ For uncompensated Baro-VNAV systems, LNAV/VNAV NA below -16°C (4°F) or above 47°C (116°F). DME/DME RNP-0.3 NA. When local altimeter setting not received, use Port Columbus Intl altimeter setting and increase all DAs 64 feet and visibility ¼ mile all Cats and all MDAs 80 feet and LNAV Cats C and D visibilities ¼ mile. Baro-VNAV and VDP NA when using Port Columbus Intl altimeter setting.

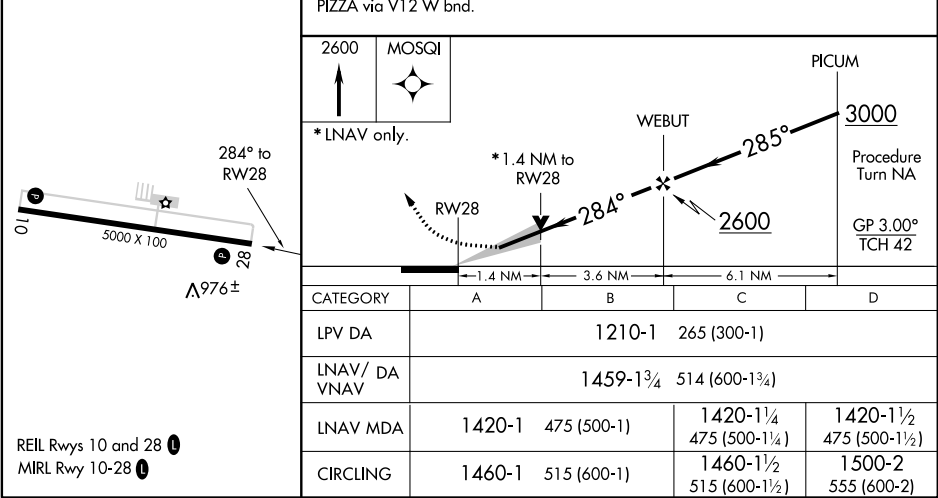
MISSED APPROACH: Climb to 2600 direct MOSQI and hold.

AWOS-3 119.025	COLUMBUS APP CON 125.95 317.775	UNICOM 122.7 (CTAF) 0
--------------------------	---	---------------------------------



ELEV 945	TDZE 945
-----------------	-----------------

Procedure NA for arrivals at PIZZA via V12 W bnd.



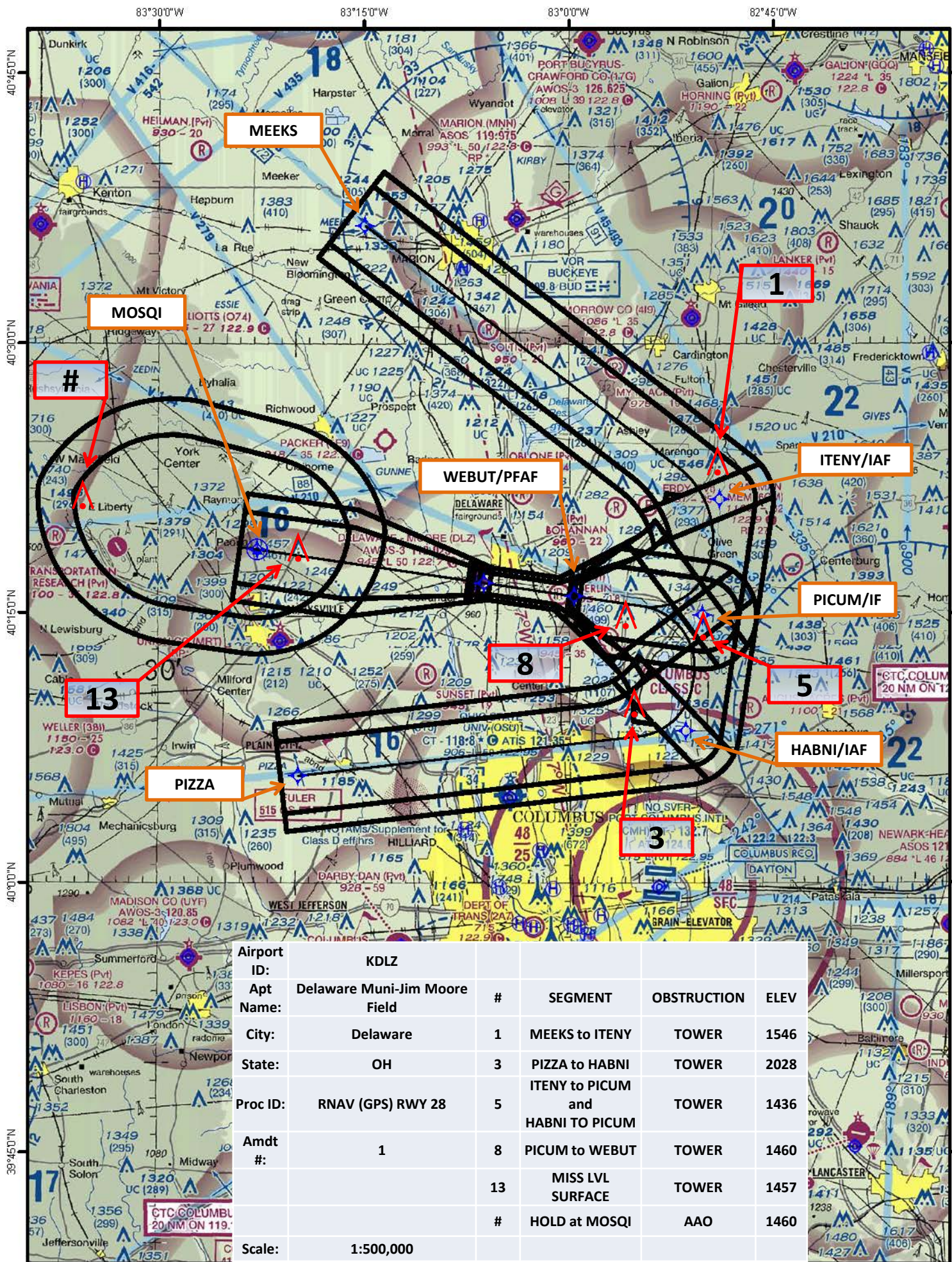
REIL Rwy 10 and 28 0
MIRL Rwy 10-28 0

DELAWARE, OHIO
Orig 05JUN08

40°17'N-83°07'W

DELAWARE MUNI-JIM MOORE FIELD (DLZ)
RNAV (GPS) RWY 28

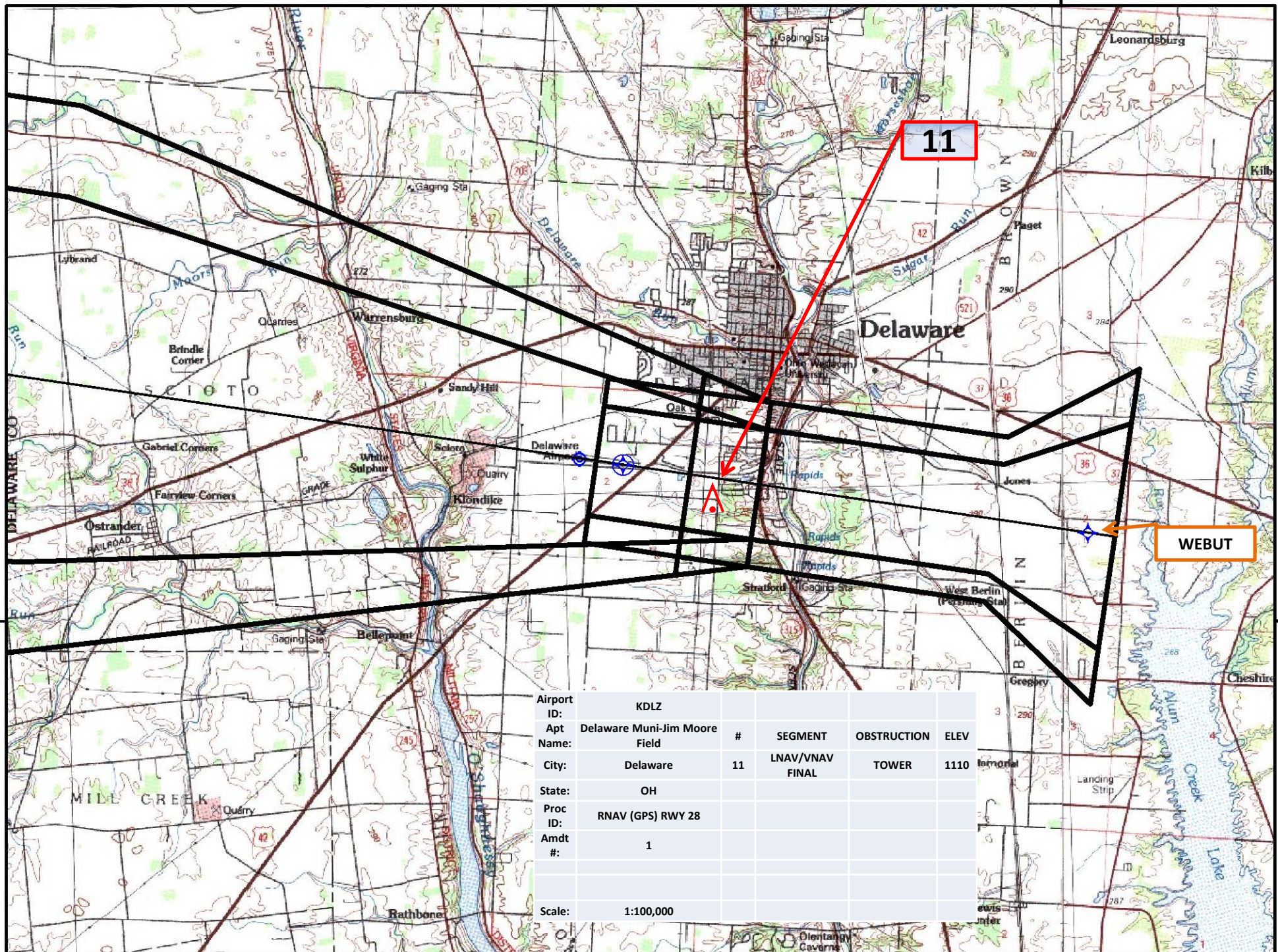
EC-2, 21 JUL 2016 to 18 AUG 2016



Airport ID:	KDLZ					
Apt Name:	Delaware Muni-Jim Moore Field	#	SEGMENT	OBSTRUCTION	ELEV	
City:	Delaware	1	MEEKS to ITENY	TOWER	1546	
State:	OH	3	PIZZA to HABNI	TOWER	2028	
Proc ID:	RNAV (GPS) RWY 28	5	ITENY to PICUM and HABNI TO PICUM	TOWER	1436	
Amdt #:	1	8	PICUM to WEBUT	TOWER	1460	
		13	MISS LVL SURFACE	TOWER	1457	
		#	HOLD at MOSQI	AAO	1460	
Scale:	1:500,000					

83°00'W

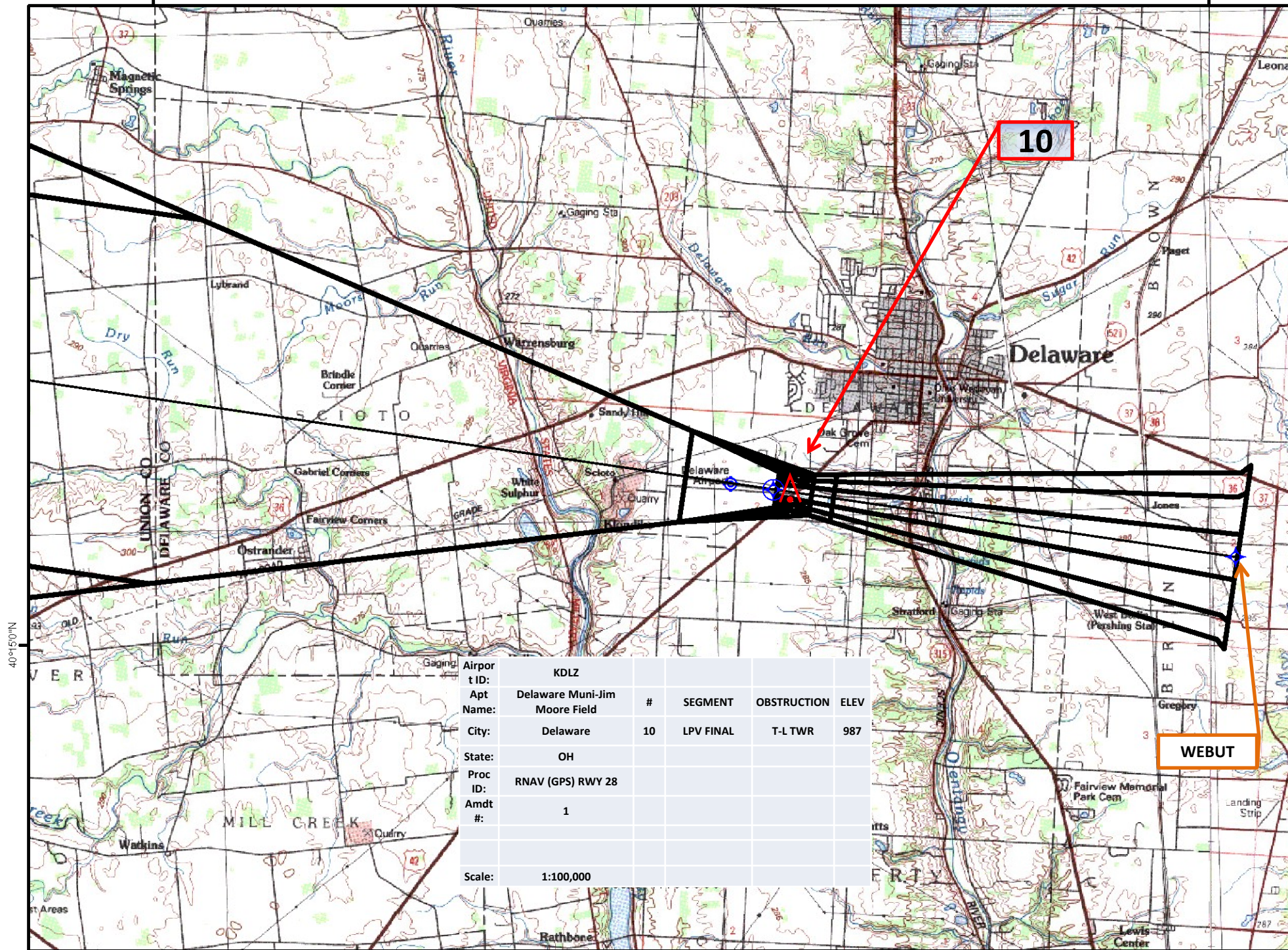
40°45'0"N



Airport ID:	KDLZ				
Apt Name:	Delaware Muni-Jim Moore Field	#	SEGMENT	OBSTRUCTION	ELEV
City:	Delaware	11	LNAV/VNAV FINAL	TOWER	1110
State:	OH				
Proc ID:	RNAV (GPS) RWY 28				
Amdt #:	1				
Scale:	1:100,000				

83°15'0"W

83°0'0"W



10

WEBUT

TERMINAL AIRSPACE DATA REQUIREMENTS

CITY: DELAWARE

STATE: OH

AIRPORT NAME: DELAWARE MUNI-JIM MOORE FIELD

ID: KDLZ

PROCEDURE: RNAV (GPS) RWY 28

AMDT: 1

DOCKET # :

(96-AXX-X/Required/Not Required)

ALL DIST TO 1/100 NM; ELEV TO NEAREST FT; COORD TO 1/100 SEC; DEG TO 1/100 DG.

- | | | | |
|---|------------------|--------------------------------|-------------|
| 1. Distance from | THLD | to 1000' point | 3.18 |
| <small>(Enter THLD, FAF, ARP, FACILITY, as appropriate)</small> | | | |
| 2. Width of | FINAL | segment at 1000' point | 1.20 |
| <small>(Enter appropriate segment , final, intermediate, etc.)</small> | | | |
| 3. True Course of | FINAL | segment containing 1000' point | 278.42 |
| 4. High Terrain in | FINAL | segment containing 1000' point | 960 |
| 5. Distance from | THLD | to 1500' point | 4.87 |
| <small>(If 1500' point in PT maneuvering area or holding pattern note in remarks)</small> | | | |
| 6. Width of | FINAL | segment at 1500' point | 1.95 |
| 7. True Course of | FINAL | segment containing 1500' point | 278.42 |
| 8. High Terrain in | FINAL | segment containing 1500' point | 960 |
| 9. Threshold Coordinates (if straight-in) ... | 401642.20N | / | 0830611.16W |
| 10. ARP Coordinates | 401646.40N | / | 0830648.20W |
| 11. Runway Approach End and distance furthest from ARP..... | RWY | 28 | |
| | Distance | .48 | NM |
| 12. FAF Coordinates | WEBUT 401557.84N | / | 0825938.10W |
| <small>(Click to Select)</small> | | | |

REMARKS:

1500 POINT IN FINAL SEGMENT.