

<b>Flight Procedure Tracking Form</b>		<b>Action:</b> FLIGHT CHECK	<b>Task Type:</b> IAP	<b>Date Open:</b> 01/14/2014	<b>Task #:</b> 2014011433010101001	<b>Request #:</b> 20140114330101
<b>Procedure:</b> APPROACH RNAV (GPS) RWY 29 ORIG-A				<b>Airport ID:</b> KGTU	<b>Airport:</b> GEORGETOWN MUNI	<b>Reimbursable #:</b> NO
<b>City:</b> GEORGETOWN	<b>ST:</b> TX	<b>GPS #:</b>	<b>Estimated Chart Date:</b> 08/18/2016		<b>FICO #:</b>	
<b>Fac ID:</b> N/A		<b>Fac. Type:</b>			<b>Specialist:</b> KISSY MAXFIELD	
<b>Procedure Review</b>						
	<b>Rec'd</b>	<b>Rel'd</b>	<b>Full Name</b>	<b>Comments</b>		
<b>Lead:</b>	01/15/2014					
<b>QA:</b>						
<b>Liaison:</b>						
<b>Procedure Comments:</b>				<b>Remark Type:</b> INFORMATION		
PNOTAM FLIGHT CHECK TABLE TOP REQUESTED CONTACT KISSY MAXFIELD 405.954.8986						

[Print](#)

Project Name: GTU RNAV GPS RWY 11/29

Project Reason: 20:1 PENETRATIONS EXIST FOR RWY 18, TOO MANY TO LIST, LISTED FIRST FIVE:

KGTUT000402 807 FT TREE 304056.72N/0974113.90W KGTUT000407 810 FT TREE 304057.15N/0974114.09W

KGTUT000417 825 FT TREE 304056.99N/0974115.57W KGTUT000419 823 FT TREE 304057.03N/0974115.63W

KGTUT000420 815 FT TREE 304056.35N/0974116.32W PENETRATIONS EXIST RWY 29 KGTUT000609 790 FT

TREE 304029.77N/0974027.83W KGTUT000611 789 FT TREE 304029.70N/0974027.73W KGTUT000619 787 FT

TREE 304028.82N/0974027.17W KGTUT000628 784 FT TREE 304028.49N/0974026.12W KGTUT000629 784 FT

TREE 304028.36N/0974026.10W ADDED RESTRICTIONS BASED ON 20:1 PENETRATIONS AND IAW 8260.19G

CIRCLING CAT B NEW CONTROLLING OBS 48-002431 BLDG 303835.34N/0974016.30W 963 FT, CIRCLING CAT

C NEW CONTROLLING OBS 48-008125 TOWER 304220.19N/0973832.31W 1057FT, CIRCLING CAT B MDA/HAA

CHANGE FROM 1260/470 TO 1280/490, CAT C CHANGE FROM 1260/470 TO 1360/570. ADDED CHART CIRC

ICON TO MATCH PROCEDURES AT AIRPORT DELETE VDP DUE TO 20:1 PEN

Last Updated By: Kissy Maxfield

Last Updated At: 2016-07-13 19:34:31.4206

Status: Verified

6/7535

!FDC X/XXXX GTU IAP GEORGETOWN MUNI, GEORGETOWN, TX. RNAV (GPS) RWY 29, ORIG... CHART

NOTE: STRAIGHT-IN RWY 29 NA AT NIGHT, CIRCLING RWY 11, 29 NA AT NIGHT. CHART NOTE:

HELICOPTER VISIBILITY REDUCTION BELOW 1 SM NOT AUTHORIZED. DELETE VDP. DELETE NOTE: VDP

NA WHEN USING SKYLARK FIELD ALTIMETER SETTING. 34:1 IS NOT CLEAR. CHART CIRCLING ICON.

CIRCLING CAT B MDA 1280/HAA 490, CAT C MDA 1360/HAA 570. THIS IS RNAV (GPS) RWY 29, ORIG-A.

1607131934-PERM

*Kissy*  
7/18/16



*straight in Rwy 29 na at night,  
 circling Rwy 11 na at night.  
 helicopter vs. Reducton below 1 sm. NA.  
 Delete VOP. 2. 34:1 is not clear.  
 Delete Desert Angle 3.04/tch 40. Red note!  
 VOP na using Skylark Field Altimeter  
 setting. Visual segment - obstacles.*

GEORGETOWN, TEXAS

AL-5724 (FAA)

15008

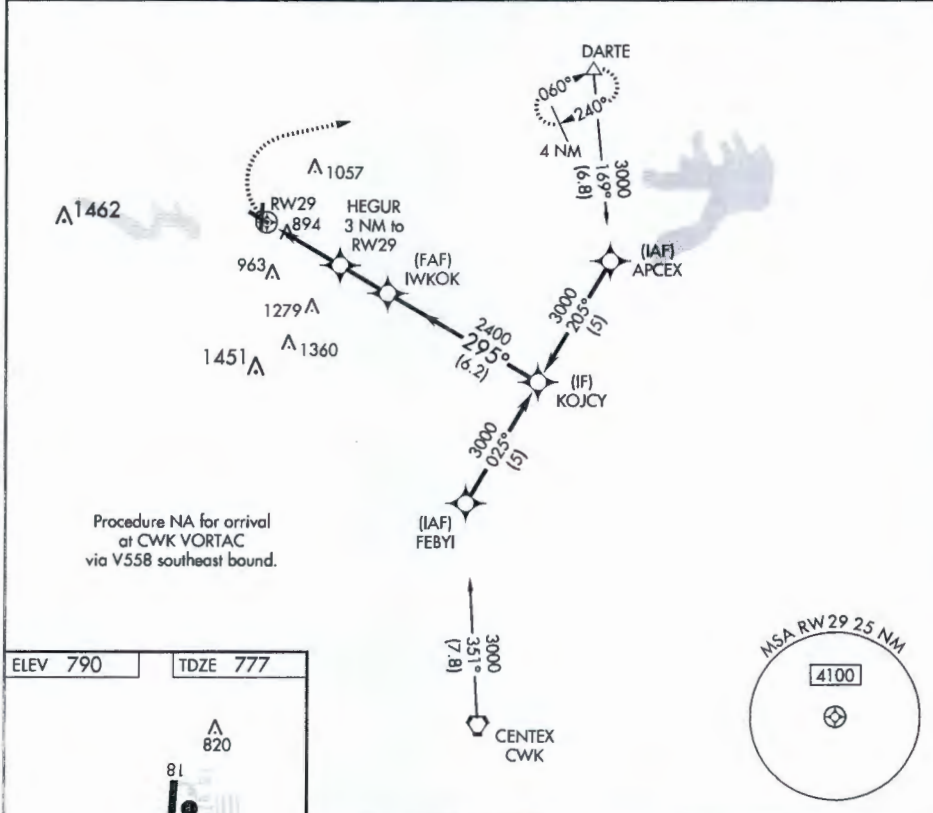
APP CRS 295°  
 Rwy Idg 4100  
 TDZE 777  
 Apt Elev 790

**RNAV (GPS) RWY 29**  
 GEORGETOWN MUNI (GTU)

**DME/DME RNP-0.3 NA.** When local altimeter setting not received, use Skylark Field altimeter setting and increase all MDA 80 feet. VDP NA when using Skylark Field altimeter setting.

**MISSED APPROACH:** Climbing right turn to 3000 direct DARTE and hold.

ATIS <b>118.6</b>	AUSTIN APP CON <b>119.0 370.85</b>	GEORGETOWN TOWER * <b>120.225 (CTAF) 0</b>	GND CON <b>119.12</b>	CLNC DEL <b>119.12</b>	AUSTIN CLNC DEL <b>121.1</b> (when tower closed)	UNICOM <b>123.0</b>
----------------------	---------------------------------------	---	--------------------------	---------------------------	--	------------------------



	3000	DARTE	HEGUR 3 NM to RW29	IWKOK	KOJCY	3000
			1.2 NM to RW29	3.04° TCH 40	295°	Procedure Turn NA
			1760	2400		
			1.2	1.8	2 NM	6.2 NM
CATEGORY	A	B	C	D		
LNAV MDA	1180-1	403 (400-1)	1180-1 1/4 403 (400-1 1/4)	NA		
CIRCLING	1260-1	470 (500-1)	1260-1 1/2 470 (500-1 1/2)	NA		

GEORGETOWN, TEXAS  
 Orig 17DEC09

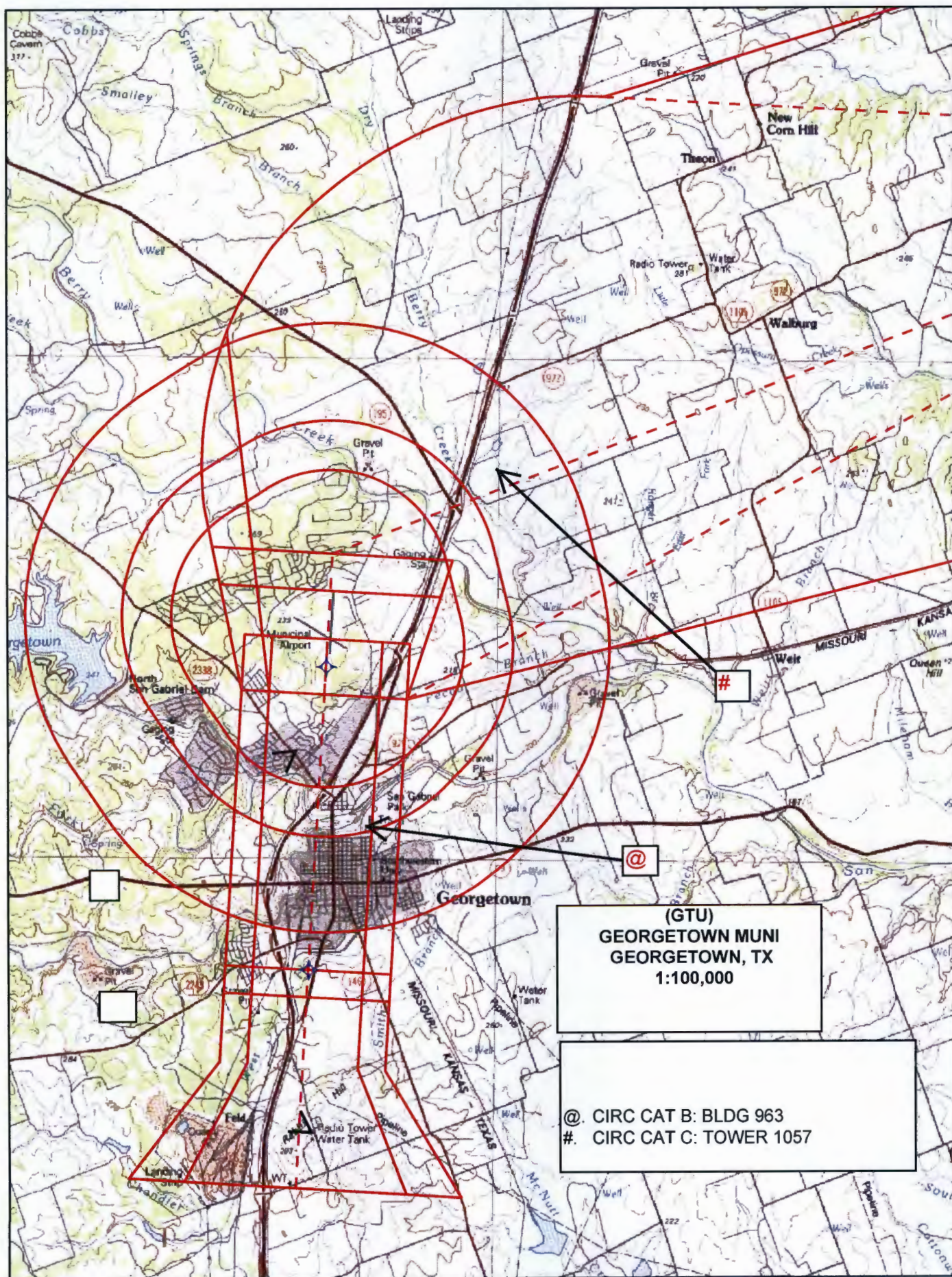
30°41'N-97°41'W

**GEORGETOWN MUNI (GTU)**  
**RNAV (GPS) RWY 29**

SC-3, 26 MAY 2016 to 23 JUN 2016

SC-3, 26 MAY 2016 to 23 JUN 2016





(GTU)  
GEORGETOWN MUNI  
GEORGETOWN, TX  
1:100,000

@. CIRC CAT B: BLDG 963  
#. CIRC CAT C: TOWER 1057