

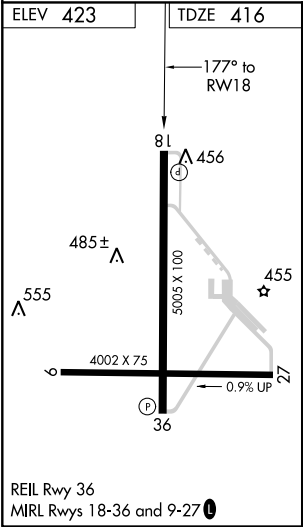
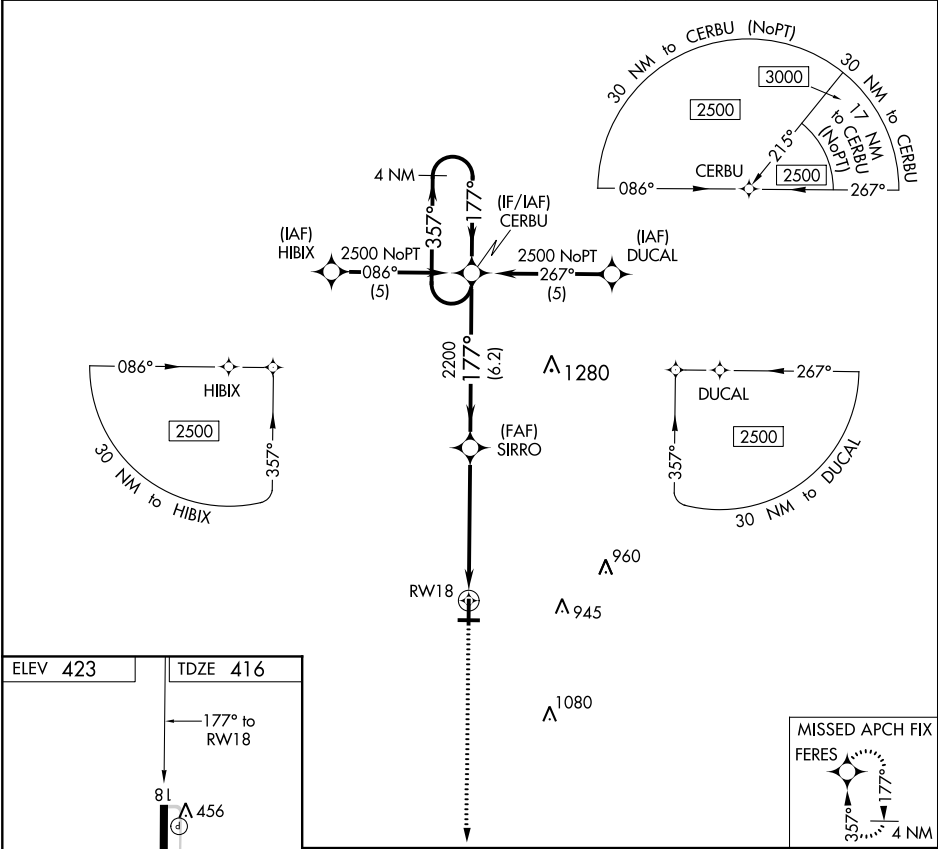
<b>Flight Procedure Tracking Form</b>		<b>Action:</b> AMENDMENT	<b>Task Type:</b> IAP	<b>Date Open:</b> 01/12/2014	<b>Task #:</b> 2014011226989901001	<b>Request #:</b> 20140112269899
<b>Procedure:</b> RNAV (GPS) RWY 18 AMDT 0B			<b>Airport ID:</b> KPSN	<b>Airport:</b> PALESTINE MUNI		<b>Reimbursable #:</b> NO
<b>City:</b> PALESTINE	<b>ST:</b> TX	<b>GPS #:</b>	<b>Estimated Chart Date:</b> 01/03/2019		<b>FICO #:</b>	
<b>Fac ID:</b> N/A		<b>Fac. Type:</b>		<b>Specialist:</b> KELLY DEAN		
<b>Procedure Review</b>						
	<b>Rec'd</b>	<b>Rel'd</b>	<b>Full Name</b>	<b>Comments</b>		
<b>Lead:</b>	02/03/2015			<div style="position: relative; height: 100px;"> <div style="position: absolute; top: 0; right: 0; color: green; font-weight: bold; transform: rotate(-45deg);">QUALITY</div> <div style="position: absolute; bottom: 0; right: 0; color: green; font-weight: bold; transform: rotate(-45deg);">CHECKED</div> </div>		
<b>QA:</b>						
<b>Liaison:</b>						
<b>Procedure Comments:</b>			<b>Remark Type:</b> INFORMATION			
P-NOTAM FDC 8/2361  POC FOR THIS ACTION IS DON LANIER 405-954-8242  FLIGHT INSPECTION REVIEW NOT REQUIRED - PROCESSED IAW AIRCRAFT OPERATIONS GROUP (AJW-33) MEMO, DEC 22, 2017.						

APP CRS <b>177°</b>	Rwy Idg TDZE <b>416</b> Apt Elev <b>423</b>
------------------------	---

**RNAV (GPS) RWY 18**  
PALESTINE MUNI (PSN)

<p><b>▼</b> VDP NA with C. David Campbell Field-Corsicana Muni altimeter setting. DME/DME RNP-0.3 NA.</p> <p><b>▲</b> Circling to Rwy 9-27, NA at night. If local weather not received, use C. David Campbell Field-Corsicana Muni altimeter setting and increase all MDAs 100 feet.</p>	<p><b>MISSED APPROACH:</b> Climb to 3000 direct FERES and hold.</p>
--	---

AWOS-3 <b>118.025</b>	FORT WORTH CENTER <b>135.25 265.1</b>	UNICOM <b>122.7 (CTAF) 0</b>
--------------------------	--	---------------------------------



3000	FERES	VGSI and descent angles not coincident (VGSI Angle 3.00/TCH 45).	CERBU	4 NM Holding Pattern
1.8	3.7 NM	6.2 NM	357°	2500
177°	177°	2200	357°	2500
1.8	3.7 NM	6.2 NM	357°	2500
CATEGORY	A	B	C	D
LNAV MDA	1040-1	624 (700-1)	1040-1¾ 624 (700-1¾)	1040-2 624 (700-2)
CIRCLING	1040-1	617 (700-1)	1040-1¾ 617 (700-1¾)	1060-2 637 (700-2)

SC-5, 16 AUG 2018 to 13 SEP 2018

SC-5, 16 AUG 2018 to 13 SEP 2018