

Flight Procedures Cover Page	Task Action: P-NOTAM	Task Type: IAP	Estimated Chart Date: 09/07/2023	APWS Task ID: 1F3F950B422C4B1D943DDE655E7EF17C	APWS Project ID: 263C733904804E56AA0BC59541BCCCE2
Procedure: RNAV (GPS) RWY 18 AMDT 1D		Enroute: NO	Specialist: Boone-walt, Rose		Agreement Number:
Airport ID: KSBN			Airport City: SOUTH BEND		State: IN
Facility ID:	Facility Type:	Flight Inspection Remark Type:			
<div>Procedure Comments: CIRCLING RESTRICTION TO RWY 27R</div> <div>Processed IAW Technical Support Group (AJF-17) Memo dated 07/07/2021, Subject: Guidance for Procedural Changes Requiring Flight Inspection/Validation</div> <div>CONTACT: JASON KRETSCHMER AJV-A421 LEAD: 405.954.4019</div> <div><div>Digitally signed by JASON KRETSCHMER Jul 20, 2023</div><div>07/14/2023</div></div>					

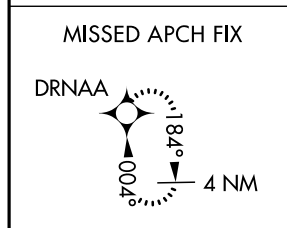
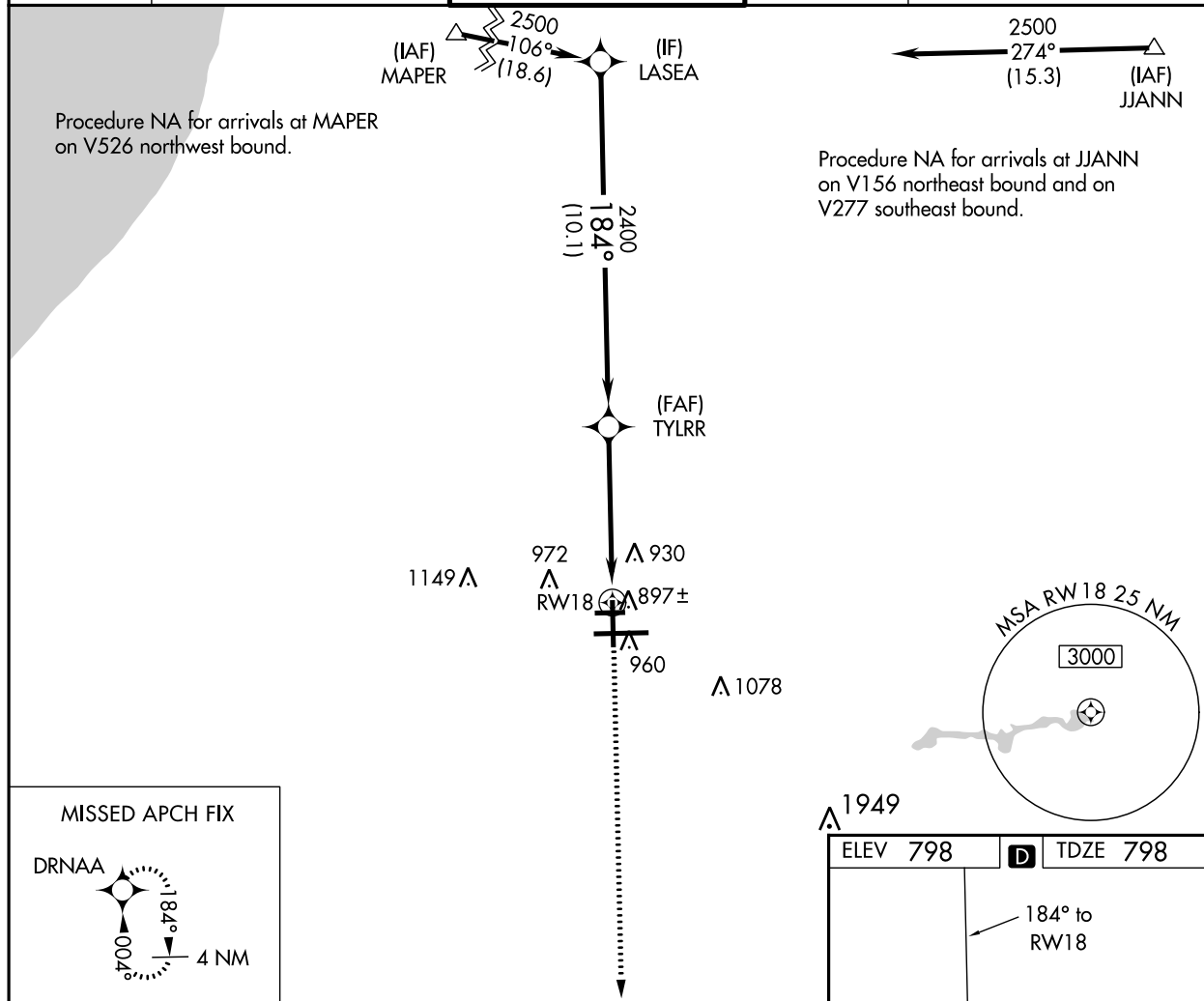
QUALITY
9
CHECKED
BEGUE

QUALITY
14
CHECKED

WAAS CH 73021 W18A	APP CRS 184°	Rwy Idg TDZE Apt Elev	7101 798 798
--	------------------------	-----------------------------	---

RNAV (GPS) RWY 18 SOUTH BEND INTL (SBN)

RNP APCH - GPS.			MISSED APPROACH: Climb to 2400 direct DRNAA and hold.	
For uncompensated Baro-VNAV systems, LNAV/VNAV NA below -19°C or above 54°C.				
ATIS 120.675	SOUTH BEND APP CON★ 118.55 257.8	SOUTH BEND TOWER★ 135.675 (CTAF) 0 257.8	GND CON 121.7	CLNC DEL 121.9



LASEA		TYLRR		2400	DRNAA
2500		2400		RW18	
GP 3.00°		10.1 NM		4.9 NM	
TCH 50					
CATEGORY	A	B	C	D	
LPV DA		1048-1	250 (300-1)		
LNAV/VNAV DA		1057-1	259 (300-1)		
LNAV MDA		1160-1	362 (400-1)		
CIRCLING	1280-1	482 (500-1)	1440-1¾ 642 (700-1¾)	1500-2¼ 702 (800-2¼)	

