

Flight Procedures Cover Page	Task Action: P-NOTAM	Task Type: IAP	Estimated Chart Date: 10/07/2021	APWS Task ID: 1D2E4DE72C3F48338150CB879241DCC8	APWS Project ID: 134B1DCB8D324470BECC82CA11C431BD
Procedure: RNAV (GPS) RWY 31 AMDT 0B		Enroute: NO	Specialist: Miller, Ralph		Agreement Number:
Airport ID: KETB			Airport City: WEST BEND		State: WI
Facility ID:	Facility Type:	Flight Inspection Remark Type:			
<p>Procedure Comments:</p> <p>P-NOTAM.</p> <p>ORDER 8260.3, CHAPTER 2, NEW CIRCLING CRITERIA APPLIED</p> <p>ACTIVE DATA USED.</p> <p>CONTACT JASON KRETSCHMER, AJV-A421, 405-954-5077.</p> <div style="text-align: center; margin-top: 20px;"> <i>Digitally signed by</i>  <b>JASON KRETSCHMER</b>  Aug 11, 2021 </div>					

QUALITY  
45  
CHECKED

QUALITY  
38  
CHECKED

OLD

WEST BEND, WISCONSIN

AL-5649 (FAA)

20142

WAAS CH <b>93816</b> <b>W31A</b>	APP CRS <b>308°</b>	Rwy Idg TDZE Apt Elev	<b>4494</b> <b>879</b> <b>887</b>
--	------------------------	-----------------------------	---

## RNAV (GPS) RWY 31

WEST BEND MUNI (ETB)

Baro-VNAV NA when using Milwaukee/Lawrence J. Timmerman altimeter setting. For uncompensated Baro-VNAV systems, LNAV/VNAV NA below -16°C (4°F) or above 47°C (116°F). DME/DME RNP-0.3 NA. Helicopter visibility reduction below ¼ SM NA. When local altimeter setting not received, use Milwaukee/Lawrence J. Timmerman altimeter setting and increase all DA 64 feet and all MDA 80 feet. Increase LPV all Cats and LNAV and Circling Cats C/D visibility ¼ mile. Night landing: Rwy 6 NA.

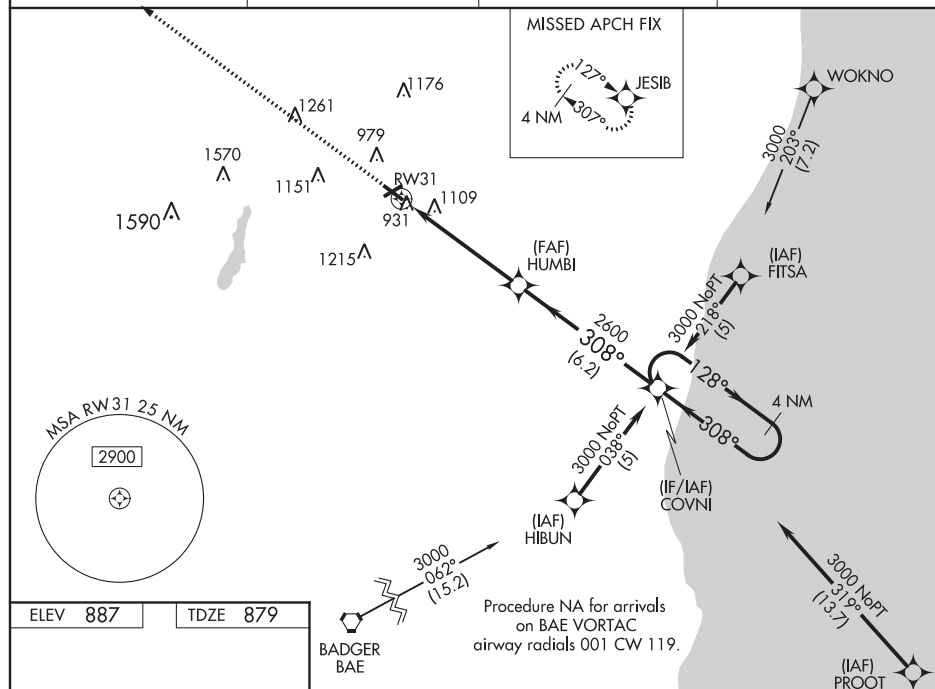
MISSED APPROACH:  
Climb to 3000 direct  
JESIB and hold.

AWOS-3  
**120.0**

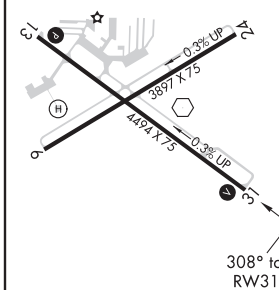
MILWAUKEE APP CON  
**125.35 307.0**

CLNC DEL  
**124.75**

UNICOM  
**122.8 (CTAF) 1**



ELEV 887 TDZE 879



REIL Rwy 13 and 31 1

MIRL Rwy 6-24 and 13-31 1

3000	JESIB	VGSI and RNAV glidepath not coincident (VGSI Angle 3.00/TCH 28).	COVNI	4 NM Holding Pattern
3000			128°	3000
			308°	
			GP 3.00°	TCH 45
			5.2 NM	6.2 NM
CATEGORY	A	B	C	D
LPV DA	1175-1	296 (300-1)		
LNAV/VNAV DA	1482-2	603 (600-2)		
LNAV MDA	1420-1	541 (600-1)	1420-1½ 541 (600-1½)	1420-1¾ 541 (600-1¾)
CIRCLING	1420-1	533 (600-1)	1460-1½ 573 (600-1½)	1520-2 633 (700-2)

WEST BEND, WISCONSIN  
Orig-A 03APR14

43°25'N-88°08'W

WEST BEND MUNI (ETB)

## RNAV (GPS) RWY 31

EC-3, 16 JUL 2020 to 13 AUG 2020

EC-3, 16 JUL 2020 to 13 AUG 2020



KETB  
WEST BEND MUNI  
WEST BEND, WI  
RNAV (GPS) RWY 31, ORIG-B  
NEW CIRCLING AREA 1:100,000

Circling CAT C/D TOWER (1258)  
55-001000

Circling CAT A TREE (1109)

Circling CAT B TOWER (1156)  
55-000184

