

Flight Procedures Cover Page	Task Action: P-NOTAM	Task Type: IAP	Estimated Chart Date: 03/21/2024	APWS Task ID: 1D0DBAD03DF045FFA33E0F1AD3CC0AB5	APWS Project ID: A228E2A916214218A8C7831A295FFC46
Procedure: RNAV (GPS)-B AMDT 0A		Enroute: NO	Specialist: Feronti, Tia		Agreement Number:
Airport ID: M13			Airport City: POPLARVILLE		State: MS
Facility ID:	Facility Type:	Flight Inspection Remark Type:			
<div>Procedure Comments:</div> <div>PROCESSED IAW TECHNICAL SUPPORT GROUP (AJF-17) MEMO DATED 07/07/2021 GUIDANCE FOR PROCEDURAL CHANGES REQUIRING FLIGHT INSPECTION/VALIDATION.</div> <div>RWY 34 VGSi TCH CHANGED FROM 37.4 TO 41.1. ADD VGSi NON-COINCIDENT NOTE.</div> <div>CONTACT DAVID DANNER, AJV-A421, 405-954-5077.</div> <div><div>QUALITY 41 CHECKED</div><div>QUALITY 18 CHECKED</div></div>					

OLD

POPLARVILLE, MISSISSIPPI

AL-11024 (FAA)

22279

APP CRS	Rwy Idg	N/A
345°	TDZE	N/A
	Apt Elev	320

RNAV (GPS)-B POPLARVILLE/PEARL RIVER COUNTY (M13)

<p>▼ DME/DME RNP-0.3 NA. Use Bogalusa altimeter setting; when not received, use Hattiesburg altimeter setting and increase all MDA 40 feet and increase Circling Cat B/C/D visibility ¼ mile. Helicopter visibility reduction below 1 SM NA. Procedure NA at night.</p> <p>▲ NA</p>	<p>MISSED APPROACH: Climb to 2100 direct ISOPE and hold.</p>
---	--

<p>BXA AWOS-3PT 118.025</p>	<p>GULFPORT APP CON ★ 124.6 354.1</p>	<p>CTAF 122.9 0</p>
--	--	--------------------------------

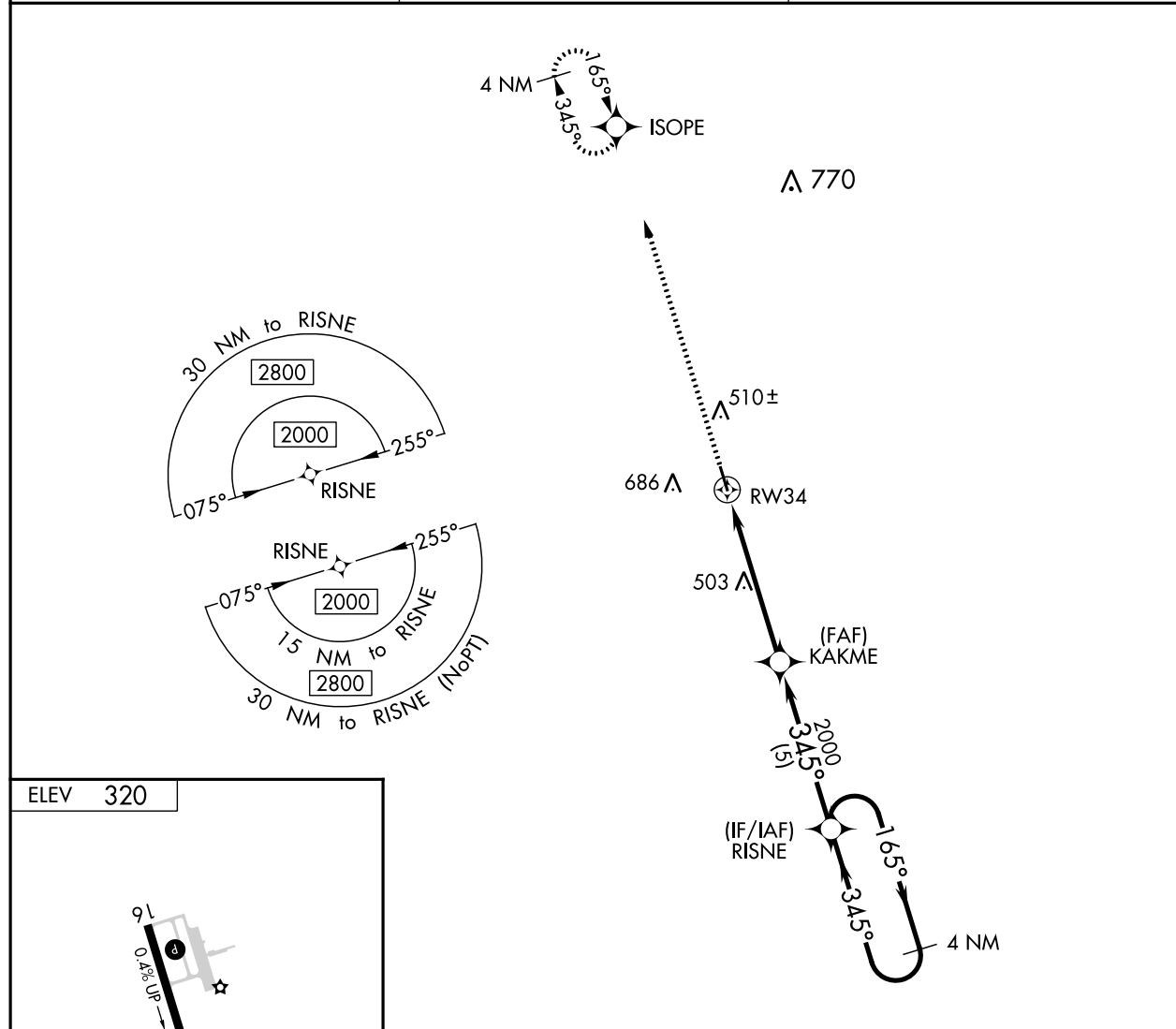


Diagram of MRL Rwy 16-34 L. The runway is oriented 345°. A dimension of 2000 X 100 is indicated. A point 'P' is marked on the runway. The runway is labeled 34.

Diagram of the 4 NM Holding Pattern. The pattern is centered on the 345° heading. The holding pattern is defined by a 3.00° TCH 37. The pattern is divided into four segments: A, B, C, and D. The dimensions are 5.2 NM for segment A and 5 NM for segments B, C, and D. The pattern is labeled 2000 X 100.

CATEGORY	A	B	C	D
CIRCLING	880-1 560 (600-1)	1120-1 800 (800-1)	1120-2¼ 800 (800-2¼)	1120-2½ 800 (800-2½)

POPLARVILLE, MISSISSIPPI

Orig 10DEC15

POPLARVILLE/PEARL RIVER COUNTY (M13)

RNAV (GPS)-B

30°47'N-89°30'W

OLD

SC-4, 02 NOV 2023 to 30 NOV 2023

SC-4, 02 NOV 2023 to 30 NOV 2023