

FEDERAL AVIATION ADMINISTRATION
FLIGHT STANDARDS SERVICE
STANDARD TERMINAL ARRIVAL (STAR)

Bearings, headings, courses, tracks and radials are magnetic. Elevations and altitudes are in feet, MSL. Altitudes are minimum altitudes unless otherwise indicated.
Distances are in nautical miles (NM). Graphic depictions attached.

| Arrival Name | Number | STAR Computer Code | Superseded Number | Dated | Effective Date |
|----------------------|-------------|----------------------|-------------------|-----------------|----------------|
| SN DIA (RNAV) | FOUR | SN DIA.SNDIA4 | THREE | 8/1/2014 | |

TRANSITION ROUTES:

| Transition Name | Transition Computer Codes | From FIX/NAVAID | To FIX/NAVAID | Course | Distance | MEA | MOCA | MAA | Crossing Altitudes / Fixes |
|-----------------|---------------------------|-----------------|---------------|--------|----------|-------|-------|-----|----------------------------|
| DATME | DATME.SNDIA4 | DATME | DATME | | | | | | |
| | | | EBIDE | 188.82 | 19.65 | FL200 | 12400 | | |
| | | | ESPAN | 188.66 | 15.00 | FL200 | 11900 | | |
| | | | DETEC | 188.33 | 13.43 | FL200 | 13700 | | BETWEEN FL200 AND FL280 |
| | | | SN DIA | 187.42 | 19.86 | 13100 | | | |
| FITEE | FITEE.SNDIA4 | FITEE | FITEE | | | FL200 | | | BETWEEN FL200 AND FL280 |
| | | | SN DIA | 235.35 | 20.83 | 13100 | 10400 | | |
| TAMEY | TAMEY.SNDIA4 | TAMEY | TAMEY | | | | | | |
| | | | FITEE | 235.76 | 37.53 | FL200 | 15300 | | BETWEEN FL200 AND FL280 |
| | | | SN DIA | 235.35 | 20.83 | 13100 | 10400 | | |

ARRIVAL ROUTE DESCRIPTION:

FROM SN DIA ON TRACK 192.78/7.02 TO CROSS VLCNO BETWEEN 14000 AND 16000 AND AT 250 KIAS, THEN ON TRACK 192.80/12.93 TO CROSS ASIDE BETWEEN 10000 AND 11000 AND AT 250 KIAS.
LANDING RWY 3: FROM ASIDE ON TRACK 195.77/9.27 TO CROSS CRSTN AT 9000 AND AT 210 KIAS. EXPECT RNAV (RNP) APPROACH OR RADAR VECTORS TO FINAL APPROACH COURSE.
LANDING RWY 8: FROM ASIDE ON TRACK 195.77/9.27 TO CROSS CRSTN AT 9000 AND AT 210 KIAS. EXPECT RNAV (RNP) OR ILS APPROACH OR RADAR VECTORS TO FINAL APPROACH COURSE.
LANDING RWY 21/26: FROM ASIDE ON TRACK 108.79/8.01 TO CROSS CADAT AT 9000 AND AT OR BELOW 210 KIAS. EXPECT RNAV (RNP) APPROACH OR RADAR VECTORS TO FINAL APPROACH COURSE.

PROCEDURAL DATA NOTES:

NOTE: RADAR REQUIRED
NOTE: RNAV 1
NOTE: DME/DME/IRU OR GPS REQUIRED
NOTE: TURBOJET AIRCRAFT ONLY
NOTE: FOR NON-GPS EQUIPPED AIRCRAFT, SAF DME MUST BE OPERATIONAL.
NOTE: CROSS DETEC AT 270 KIAS. CROSS FITEE AT 270 KIAS.
NOTE: LANDING RWY 3: EXPECT RNAV RNP APPROACH CLEARANCE OR RADAR VECTORS TO FINAL APPROACH COURSE PRIOR TO CRSTN.
NOTE: LANDING RWY 8: EXPECT RNAV RNP OR ILS APPROACH CLEARANCE OR RADAR VECTORS TO FINAL APPROACH COURSE PRIOR TO CRSTN.
NOTE: LANDING RWYS 21, 26: EXPECT RNAV RNP APPROACH CLEARANCE OR RADAR VECTORS TO FINAL APPROACH COURSE PRIOR TO CADAT.

FIXES AND/OR HOLDING PATTERNS:

CHART HOLDING AT ESPAN: N, RT, 188.66 INBOUND, 10 NM LEGS.
CHART HOLDING AT FITEE: NE, RT, 235.35 INBOUND, 10 NM LEGS.
CHART HOLDING AT VLCNO: N, RT, 192.80 INBOUND, 10 NM LEGS.

QUALITY
16
CHECKED

FEDERAL AVIATION ADMINISTRATION
FLIGHT STANDARDS SERVICE
STANDARD TERMINAL ARRIVAL (STAR)

Bearings, headings, courses, tracks and radials are magnetic. Elevations and altitudes are in feet, MSL. Altitudes are minimum altitudes unless otherwise indicated.
Distances are in nautical miles (NM). Graphic depictions attached.

| Arrival Name | Number | STAR Computer Code | Superseded Number | Dated | Effective Date |
|----------------------|-------------|-----------------------|-------------------|-----------------|----------------|
| SN DIA (RNAV) | FOUR | SN DIA.SN DIA4 | THREE | 8/1/2014 | |

COMMUNICATIONS:

ABQ ARTCC, ABQ APP CON, ABQ ATIS

AIRPORTS SERVED:

ALBUQUERQUE INTL SUNPORT, ALBUQUERQUE, NM (KABQ)

LOST COMMUNICATIONS PROCEDURE:

FROM OVER CADAT, EXECUTE RNAV RNP APPROACH FOR ASSIGNED RUNWAY. NON-RNAV (RNP) FROM OVER CADAT, FLY HEADING 175° CLIMB AND MAINTAIN 10000 THEN DIRECT ABQ VORTAC AND HOLD.

REMARKS:

ADDITIONAL FLIGHT DATA:

DME/DME ASSESSMENT: SAT (RNP 2.0)
REFERENCE MAGNETIC VARIATION = KABQ 11E/1995
CHART TERMINUS AT CRSTN LDG RWY 03/08.
CHART TERMINUS AT CADAT LDG RWY 21/26.

FLIGHT INSPECTED BY:

Processed IAW Aircraft Operations Group (AJF-10) Memo,
April 29, 2020 Subject: Flight Inspection Review Not Required.

Name

Organization

Date

Digitally signed by

DAVID DANNER

Nov 09, 2020

Signature

Digitally signed by

DAVID DANNER

Nov 09, 2020

DEVELOPED BY:

BETSY SUTTON

Name

ALBUQUERQUE TOWER

Organization

4/22/2020

Date

Signature

Digitally signed by

DAVID DANNER

Nov 09, 2020

Signature

APPROVED BY:

PATRICK MULQUEEN, MANAGER

Name

AJV-A440

Organization

Date

CHANGES:

1. ADDED LOST COMMUNICATIONS PROCEDURE.
2. ADDED TERMINUS RWY DATA AT CRSTN AND CADAT IN ADDITIONAL FLIGHT DATA.

REASONS:

1. ATSAP WAS FILED UNTIL LOST COMMUNACATIONS ROUTING IS ADDED.
2. IAW 8260.19H, 4-5-1.b(8)(b).

11/05/2020: THIS IS A CORRECTED COPY OF THE FORM APPROVED ON 08/17/2020.

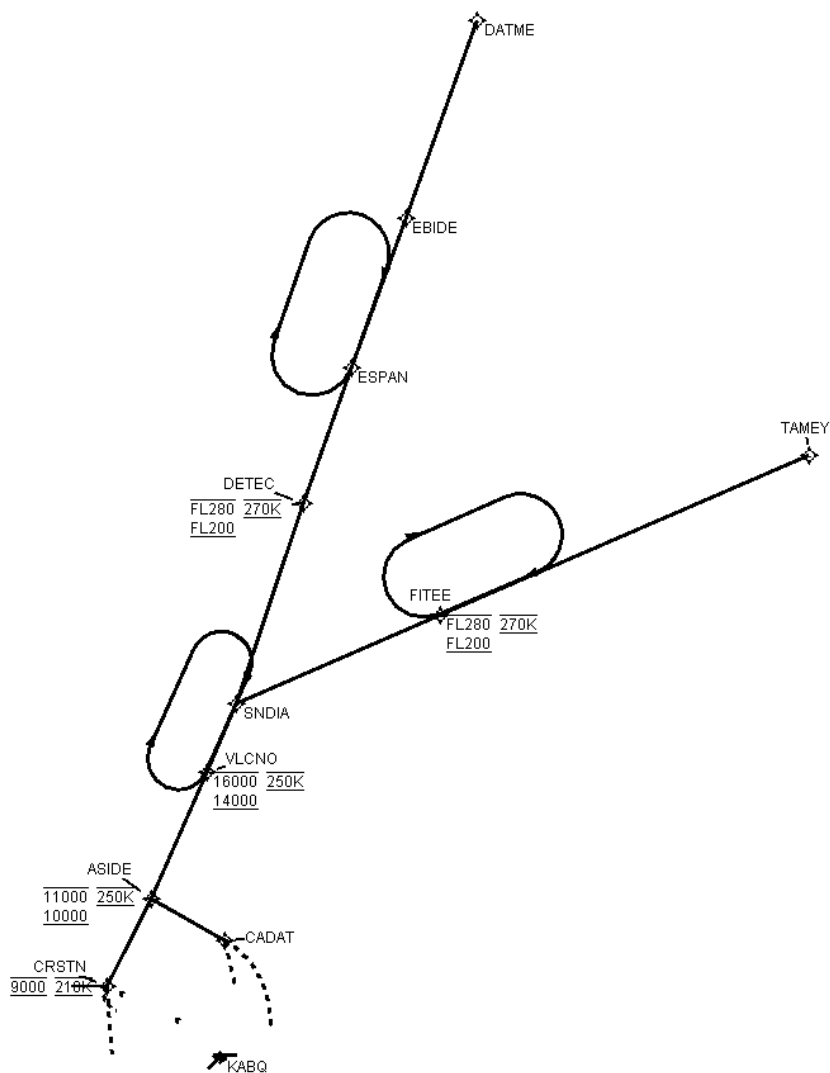
1. LOST COMMUNICATIONS INSTRUCTIONS: CHANGES ABQ VOR TO ABQ VORTAC.

QUALITY
16
CHECKED

FEDERAL AVIATION ADMINISTRATION
FLIGHT STANDARDS SERVICE
STANDARD TERMINAL ARRIVAL (STAR)

Bearings, headings, courses, tracks and radials are magnetic. Elevations and altitudes are in feet, MSL. Altitudes are minimum altitudes unless otherwise indicated.
Distances are in nautical miles (NM). Graphic depictions attached.

| Arrival Name | Number | STAR Computer Code | Superseded Number | Dated | Effective Date |
|----------------------------|-------------|----------------------|-------------------|-----------------|----------------|
| SN DIA (RNAV) | FOUR | SN DIA.SNDIA4 | THREE | 8/1/2014 | |
| Graphic Depiction 1 | | | | | |



QUALITY
16
CHECKED

FEDERAL AVIATION ADMINISTRATION
FLIGHT STANDARDS SERVICE
STAR (DATA RECORD)

| Arrival Name SNDIA (RNAV) | Number FOUR | STAR Computer Code SNDIA.SNDIA4 | | Superseded Number THREE | | Dated 8/1/2014 | Effective Date | | |
|------------------------------|--------------------------|------------------------------------|-------|----------------------------|--------|-------------------|----------------|---------|--------------|
| FIX/NAVAID | LAT/LONG | C | FO/FB | LEG TYPE | TC | DIST (NM) | ALTITUDE | SPEED | REMARKS |
| En Route Transition | | | | | | | | | |
| DATME | 363951.15N / 1060656.76W | Y | | IF | | | | | DATME.SNDIA4 |
| EBIDE | 362120.25N / 1061511.63W | Y | FB | TF | 199.82 | 19.65 | | | |
| ESPAN | 360711.35N / 1062125.34W | Y | FB | TF | 199.66 | 15.00 | | | |
| DETEC | 355429.87N / 1062653.68W | Y | FB | TF | 199.33 | 13.43 | FL200BFL280 | AT 270K | |
| SNDIA | 353537.42N / 1063435.33W | Y | FB | TF | 198.42 | 19.86 | | | |
| En Route Transition | | | | | | | | | |
| FITEE | 354401.81N / 1061111.88W | Y | | IF | | | FL200BFL280 | AT 270K | FITEE.SNDIA4 |
| SNDIA | 353537.42N / 1063435.33W | Y | FB | TF | 246.35 | 20.83 | | | |
| En Route Transition | | | | | | | | | |
| TAMEY | 355859.06N / 1052850.70W | Y | | IF | | | | | TAMEY.SNDIA4 |
| FITEE | 354401.81N / 1061111.88W | Y | FB | TF | 246.76 | 37.53 | FL200BFL280 | AT 270K | |
| SNDIA | 353537.42N / 1063435.33W | Y | FB | TF | 246.35 | 20.83 | | | |
| Common Route | | | | | | | | | |
| SNDIA | 353537.42N / 1063435.33W | Y | | IF | | | | | SNDIA.SNDIA4 |
| VLCNO | 352911.26N / 1063803.36W | Y | FB | TF | 203.78 | 07.02 | 14000B16000 | AT 250K | |
| ASIDE | 351720.12N / 1064425.88W | Y | FB | TF | 203.80 | 12.93 | 10000B11000 | AT 250K | |
| Runway Transition | | | | | | | | | |
| ASIDE | 351720.12N / 1064425.88W | Y | | IF | | | 10000B11000 | AT 250K | |
| CRSTN | 350902.90N / 1064931.21W | Y | FB | TF | 206.77 | 09.27 | AT 9000 | AT 210K | |
| KABQ:RWY 3 | | | | | | | | | |

QUALITY
16
CHECKED

FEDERAL AVIATION ADMINISTRATION
FLIGHT STANDARDS SERVICE
STAR (DATA RECORD)

| | | | | | |
|-------------------------------------|-----------------------|---|-----------------------------------|--------------------------|----------------|
| Arrival Name SNDIA (RNAV) | Number FOUR | STAR Computer Code SNDIA.SNDIA4 | Superseded Number THREE | Dated 8/1/2014 | Effective Date |
|-------------------------------------|-----------------------|---|-----------------------------------|--------------------------|----------------|

| FIX/NAVAID | LAT/LONG | C | FO/FB | LEG TYPE | TC | DIST (NM) | ALTITUDE | SPEED | REMARKS |
|--------------------------|--------------------------|---|-------|-------------|--------|--------------|-------------|---------|---------|
| Runway Transition | | | | | | | | | |
| ASIDE | 351720.12N / 1064425.88W | Y | | IF | | | 10000B11000 | AT 250K | |
| CRSTN | 350902.90N / 1064931.21W | Y | FB | TF | 206.77 | 09.27 | AT 9000 | AT 210K | |

KABQ:RWY 8

| | | | | | | | | | |
|--------------------------|--------------------------|---|----|----|--------|-------|-------------|---------------|--|
| Runway Transition | | | | | | | | | |
| ASIDE | 351720.12N / 1064425.88W | Y | | IF | | | 10000B11000 | AT 250K | |
| CADAT | 351320.76N / 1063556.92W | Y | FB | TF | 119.79 | 08.01 | AT 9000 | AT/BELOW 210K | |

**KABQ:RWY 21,RWY
26**

QUALITY
16
CHECKED