

Flight Procedures Cover Page	Task Action: FLIGHT CHECK	Task Type: IAP	Estimated Chart Date: 11/27/2025	APWS Task ID: 1C9AE6A8986248D89C52C75D71A6F520	APWS Project ID: 0F3D45DED0D04EFC9B7238CF2EE830D1
Procedure: RNAV (GPS) RWY 4 AMDT 2		Enroute: NO	Specialist: Prassada, Parnell		Agreement Number:
Airport ID: KCOD			Airport City: CODY		State: WY
Facility ID:	Facility Type:	Flight Inspection Remark Type: Hold FC Slot			
<div>Procedure Comments:</div> <div>ACTIVE DATA USED.</div> <div>WAIVER (1): TO NOT DEVELOP A CAPTURE FIX.</div> <div>LOA (1): FOR PRECIPITOUS POINT VALUE (PPV) ADJUSTMENT APPLIED TO INTERMEDIATE SEGMENT ALTITUDES.</div> <div>CRC REMAINDER CHANGED FROM 45077E73 TO ECA3577F.</div> <div>CONTACT CASEY HILL: AJV-A431, (405) 954-0624.</div> <div><div>QUALITY 41 CHECKED</div><div>QUALITY 40 CHECKED</div></div>					



Federal Aviation Administration

Memorandum

Date: 05/14/2025
To: Wade Terrell, Manager, Flight Technologies and Procedures Division THRU:
Wayne Radicke, Manager, Flight Procedures and Airspace Group
From: Julie Morgan, Manager, Team 1, AJV-A41
Subject: Approval Request: YELLOWSTONE RGNL (KCOD), RNAV (GPS) RWY 4

RNAV (GPS) RWY 4, YELLOWSTONE RGNL (KCOD), CODY WY

FAAO 8260.3G, Paragraph 3-2-2 (B) (3): Precipitous Point Value (PPV).

Request PPV approval for RNAV (GPS) RWY 4 at Yellowstone Regional.

Segment altitudes requested cannot be attained using TARGETS 3D Elevation Program (3DEP) Digital Elevation Models (DEM) terrain data. These adjustments are crucial for traffic deconfliction and gradual descent profile.

Adjustment values were derived from 8260.3G, Appendix C, Precipitous Terrain Algorithms.

Beginning Point: TOCUD (440352.750N/1100818.400W)
End Point: JABOS (441653.410N/1093337.660W)
Segment type: Initial
Maximum PPV value: 250
Weighting factor: 0.6
Precipitous Adjustment: 150 ft ($0.6 \times 250 = 150$ ft Precipitous Adjustment)

Beginning Point: JABOS (441653.410N/1093337.660W)
End Point: KEBDE (441748.750N/1093108.480W)
Segment type: Initial
Maximum PPV value: 250
Weighting factor: 0.6
Precipitous Adjustment: 150 ft ($0.6 \times 250 = 150$ ft Precipitous Adjustment)

Beginning Point: KEBDE (441748.750N/1093108.480W)
End Point: TAKBE (441913.970N/1092709.870W)
Segment type: Intermediate
Maximum PPV value: 250



Federal Aviation Administration

Weighting factor: 0.5

Precipitous Adjustment: 125 ft ($0.5 \times 250 = 125$ ft Precipitous Adjustment)

Beginning Point: TAKBE (441913.970N/1092709.870W)

End Point: SHEAF (442115.454N/1092128.708W)

Segment type: Intermediate

Maximum PPV value: 136

Weighting factor: 0.5

Precipitous Adjustment: 68 ft ($0.5 \times 136 = 68$ ft Precipitous Adjustment)

Beginning Point: SHEAF (442115.454N/1092128.708W)

End Point: DULAC (442316.654N/1091527.154W)

Segment type: Intermediate

Maximum PPV value: 138

Weighting factor: 0.5

Precipitous Adjustment: 69 ft ($0.5 \times 138 = 69$ ft Precipitous Adjustment)

FIG

RNAV (GPS) RWY 4
YELLOWSTONE RGNL (COD)

MISSED APPROACH: Climb to 8400 direct BOART and on track 348° to SEZJ and hold.

UNICOM
122.8 (CTAF) **L**

ELEV 5102 D TDZE 5097

038°

8268 x 100

0.7% DOWN

A5

A2

A5

HIRL Rwy 4-22 L

REIL Rwy 4 and 22 L

AUTOMATED AL-5243 RNAV (GPS) RWY 4
AUTOMATED AL-5243 RNAV (GPS) RWY 4

26 JUN 2025
COMPILER: CG
REVIEWER:
DBL CHKR:
EFF: FIG

YELLOWSTONE RGNL (COD)

RNAV (GPS) RWY 4

CODY, WYOMING





AL-5243 (FAA)

24361

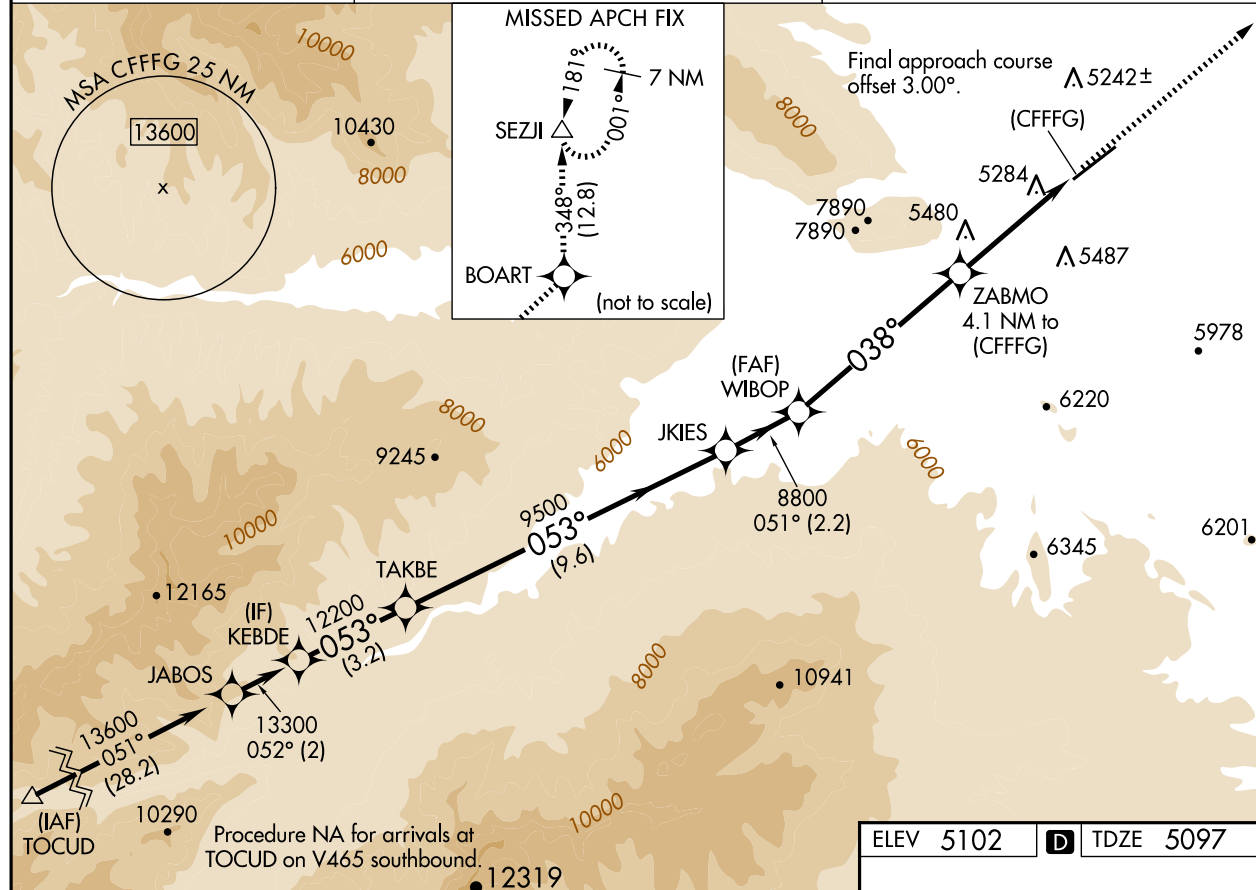
WAAS CH 45943 W04A	APP CRS 038°	Rwy ldg TDZE Apt Elev	7178 5097 5102
--	------------------------	-----------------------------	---


RNAV (GPS) RWY 4

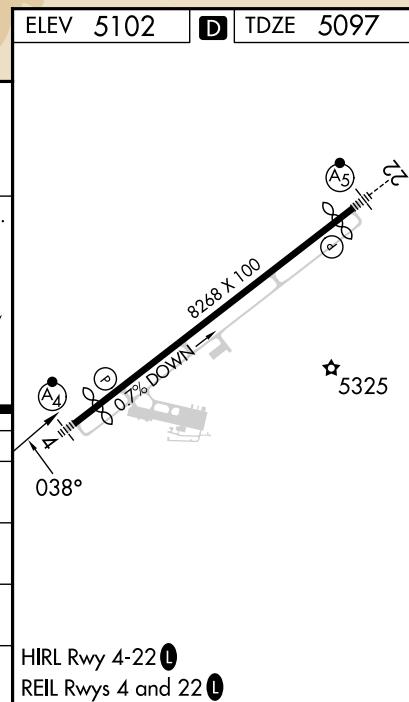
YELLOWSTONE RGNL (COD)

RNP APCH.	MALSF	MISSED APPROACH: Climb to 8400 direct BOART and on track 348° to SEZJI and hold.
 Rwy 4 helicopter visibility reduction below 3/4 SM NA.  Baro-VNAV NA.  -10°C		

AWOS-3PT 135.075	SALT LAKE CENTER 127.75 351.9	UNICOM 122.8 (CTAF) 1
----------------------------	---	---------------------------------



ELEV 5102		D TDZE 5097	
KEBDE 13300 GP 3.50° TCH 60		TAKBE 12200 9500 8800 *6680	
JKIES 8800 *6680		WIBOP 8800 *6680	
ZABMO 4.1 NM to (CFFG) *2 NM to (CFFG)		SEZJI tr 348° *LNAV only.	
3.2 NM 9.6 NM 2.2 NM 5.7 NM 2.1 NM 2 NM		8400 BOART 	
CATEGORY	A	B	C
LPV DA	5792-2	695 (700-2)	
LNAV/VNAV DA	5891-2 1/2	794 (800-2 1/2)	
LNAV MDA	5920-1 823 (900-1)	5920-1 1/4 823 (900-1 1/4)	5920-2 1/2 823 (900-2 1/2)
CIRCLING	5920-1 1/4 818 (900-1 1/4)	5940-2 1/2 838 (900-2 1/2)	7000-3 1898 (1900-3)


 CODY, WYOMING
 Amdt 1 31DEC20

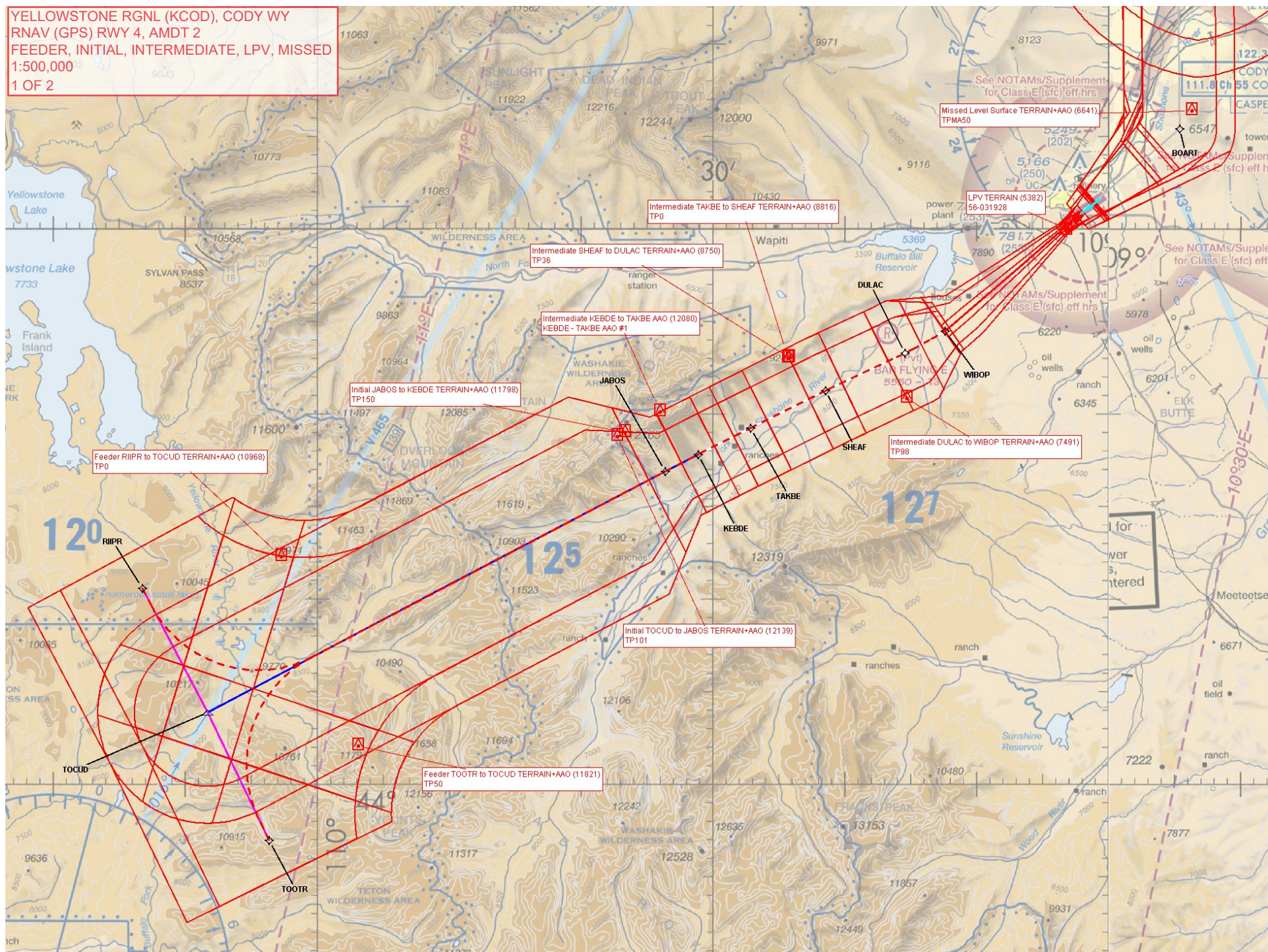
44°31'N-109°01'W

 YELLOWSTONE RGNL (COD)
 RNAV (GPS) RWY 4

NW-1, 17 APR 2025 to 15 MAY 2025

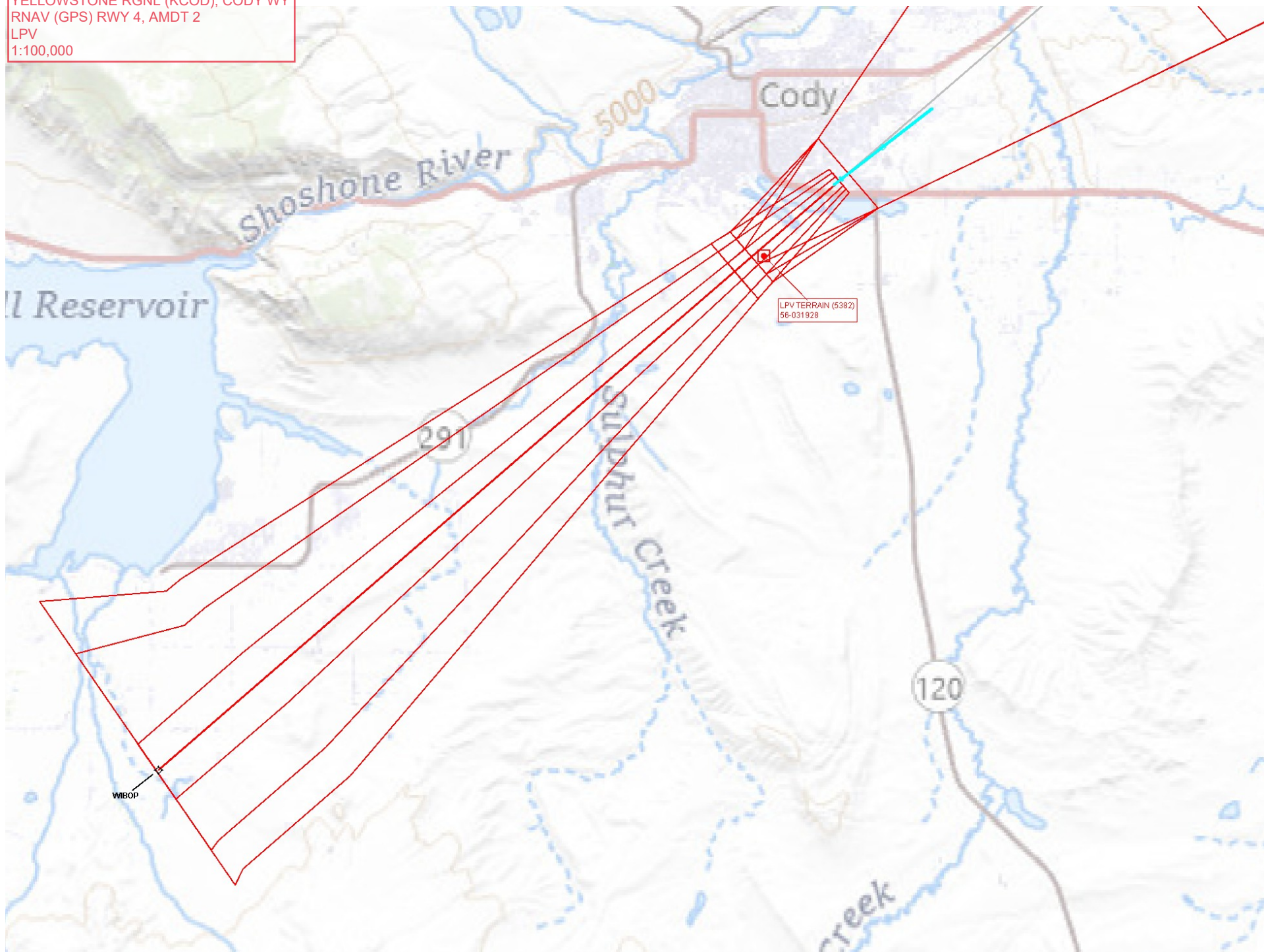
NW-1, 17 APR 2025 to 15 MAY 2025

YELLOWSTONE RGNL (KCOD), CODY WY
RNAV (GPS) RWY 4, AMDT 2
FEEDER, INITIAL, INTERMEDIATE, LPV, MISSED
1:500,000
1 OF 2

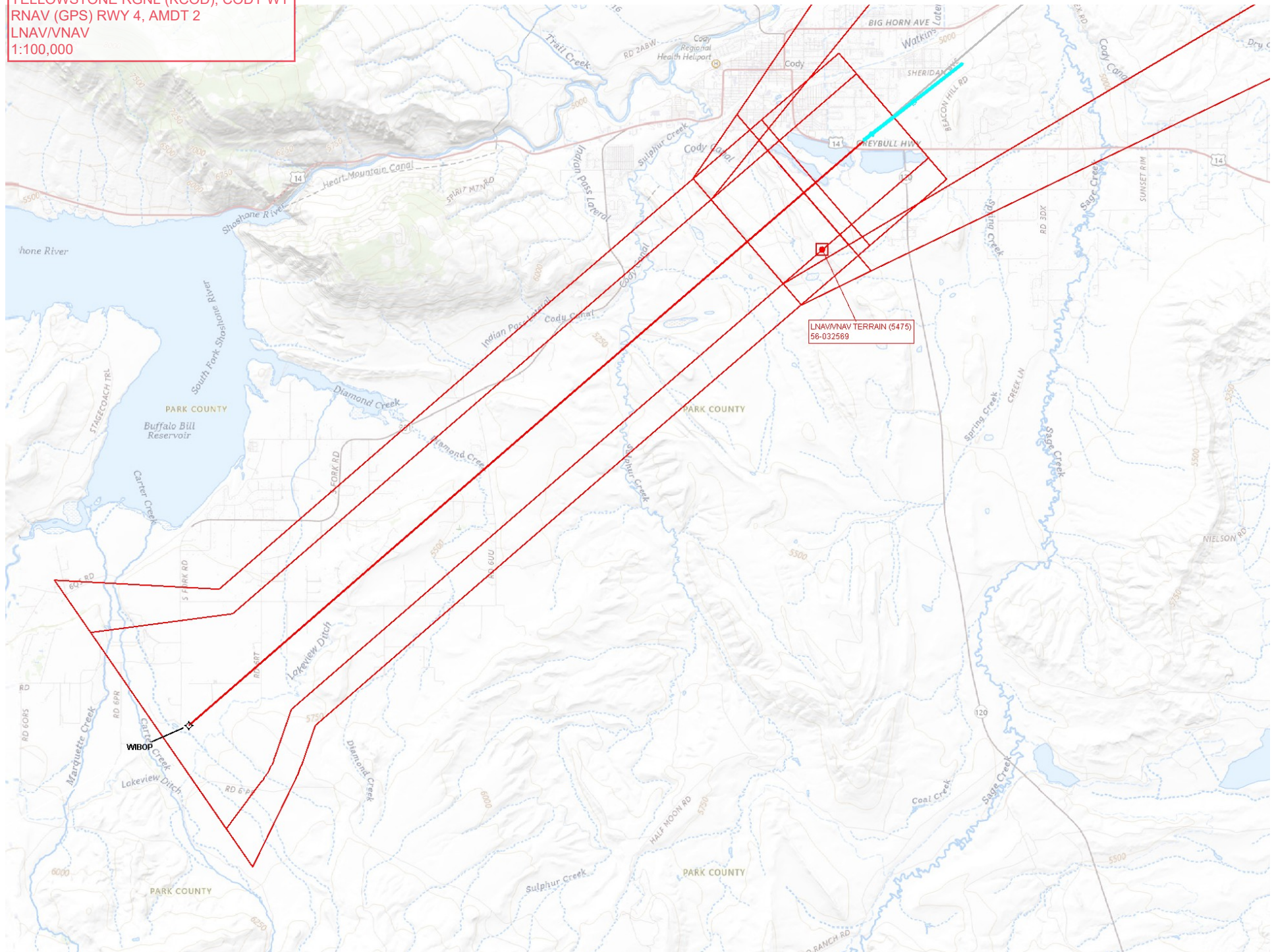


YELLOWSTONE RGRL (KC0D), CODY WY
RNAV (GPS) RWY 4, AMDT 2
FEEDER, INITIAL, INTERMEDIATE, LPV, MISSED
1:500,000
2 OF 2

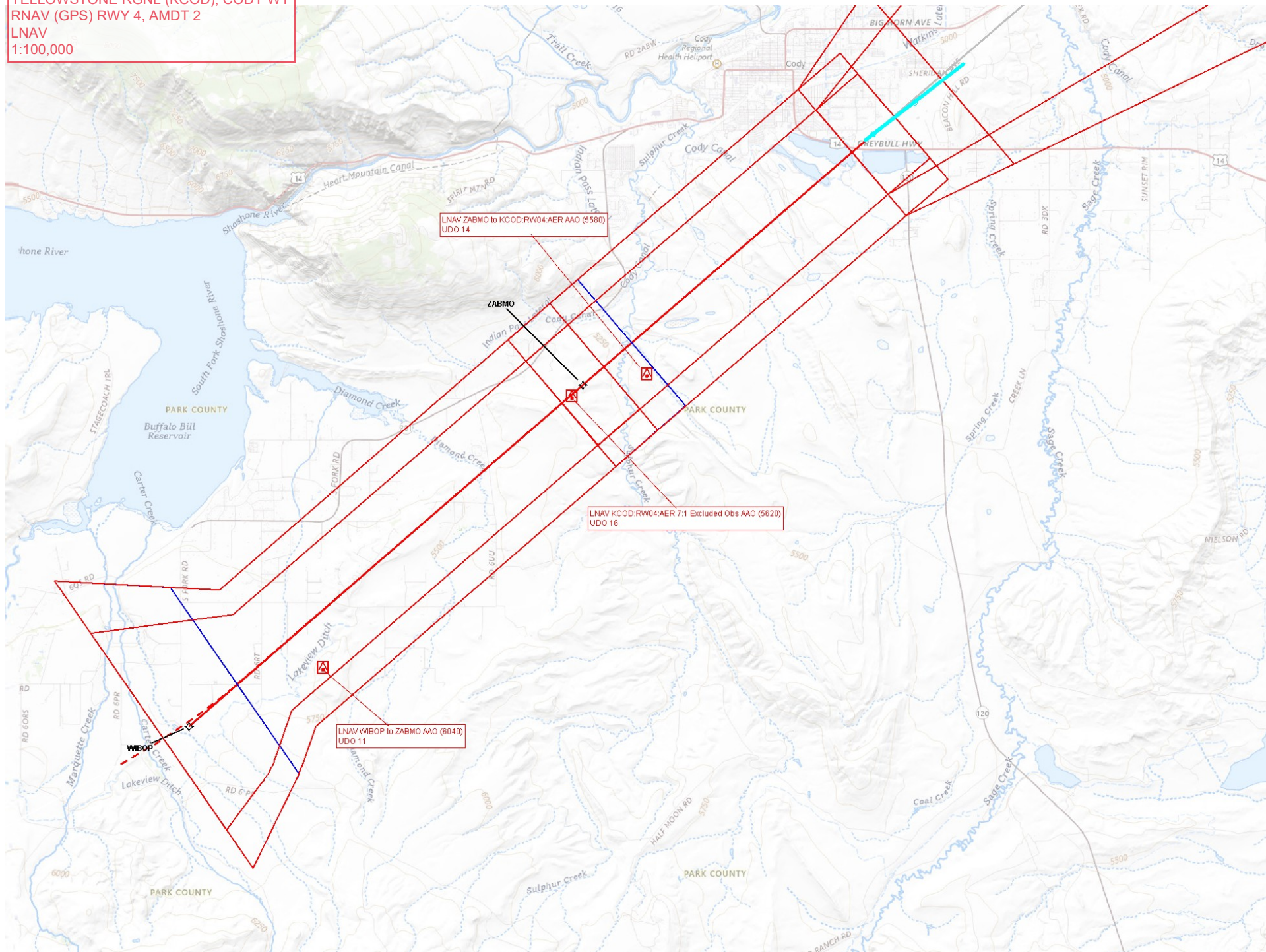
YELLOWSTONE RGNL (KCOD), CODY WY
RNAV (GPS) RWY 4, AMDT 2
LPV
1:100,000



YELLOWSTONE RGNL (KCOD), CODY WY
RNAV (GPS) RWY 4, AMDT 2
LNAV/VNAV
1:100,000



YELLOWSTONE RGNL (KCOD), CODY WY
RNAV (GPS) RWY 4, AMDT 2
LNAV
1:100,000



YELLOWSTONE RGNL (KCOD), CODY WY
RNAV (GPS) RWY 4, AMDT 2
CIRCLING
1:100,000

