

Flight Procedures Cover Page	Task Action: P-NOTAM	Task Type: IAP	Estimated Chart Date: 09/09/2021	APWS Task ID: 1C912303E446476E9DD98924139DC99A	APWS Project ID: 94AD6565E4BD467BA1B48018482FC802
Procedure: RNAV (GPS) RWY 1 AMDT 0D		Enroute: NO	Specialist: Miller, Ralph		Agreement Number:
Airport ID: KSGU			Airport City: ST GEORGE		State: UT
Facility ID:	Facility Type:	Flight Inspection Remark Type:			
<p>Procedure Comments:</p> <p>P-NOTAM.</p> <p>ORDER 8260.3, CHAPTER 2, NEW CIRCLING CRITERIA APPLIED</p> <p>ACTIVE DATA USED.</p> <p>CONTACT JASON KRETSCHMER, AJV-A421, 405-954-5077.</p> <div style="text-align: center; margin-top: 20px;"> <i>Digitally signed by</i> JASON KRETSCHMER Jul 20, 2021 </div>					

QUALITY
47
CHECKED

QUALITY
38
CHECKED

ST GEORGE, UTAH

OLD

(FAA)

19171

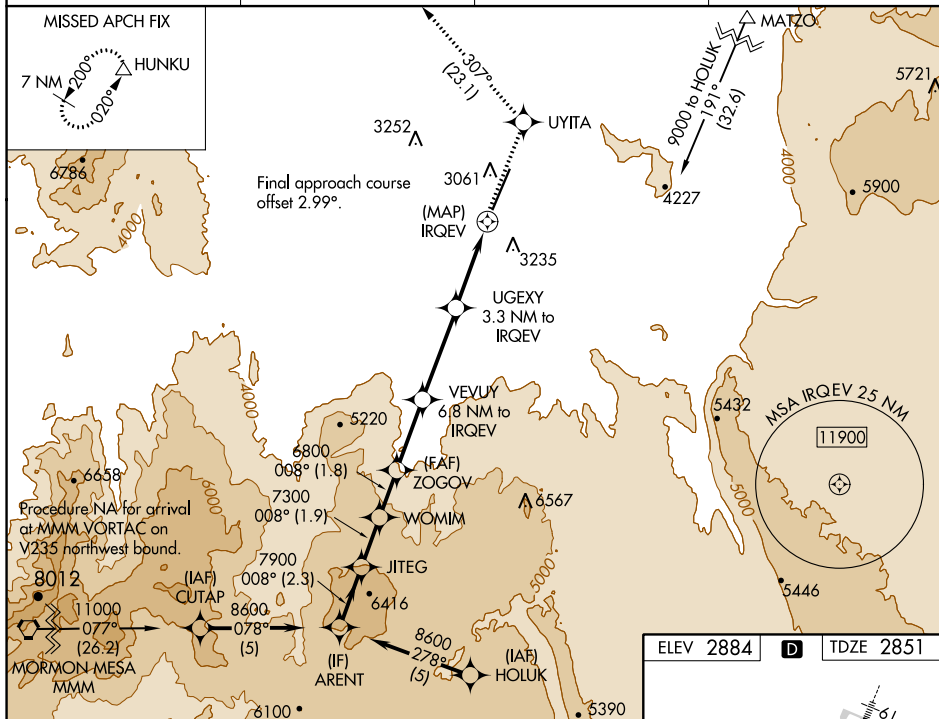
WAAS CH 50220 W01A	APP CRS 008°	Rwy Idg TDZE Apt Elev	9300 2851 2884
--	------------------------	-----------------------------	---

RNAV (GPS) RWY 1

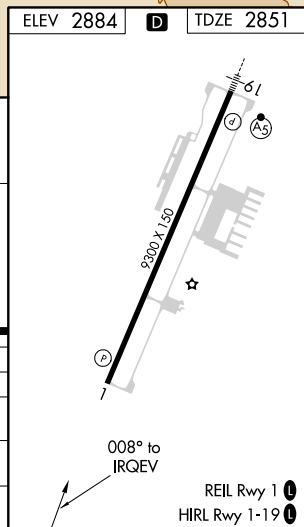
ST GEORGE RGNL (SGU)

<p>V DME/DME RNP-0.3 NA. Helicopter visibility reduction below 1 SM NA.</p> <p>A # Missed approach requires a minimum climb of 225 feet per NM to 6800.</p> <p>W -17°C † Missed approach requires a minimum climb of 220 feet per NM to 6700.</p>	<p>MISSED APPROACH: Climb to 9800 direct UYITA and on track 307° to HUNKU and hold, continue climb-in-hold to 9800.</p>
--	--

AWOS-3PT 135.075	LOS ANGELES CENTER 124.2 343.6	CLNC DEL 133.3	UNICOM 122.8 (CTAF)
----------------------------	--	--------------------------	-------------------------------



VGS1 and RNAV glidepath not coincident (VGS1 Angle 3.00 /TCH 50).				9800 ↑	UYITA ✧	tr 307°	HUNKU △
ARENT	JITEG	WOMIM	ZOGOV	VEVUY 6.8 NM to IRQEV	UGEXY 3.3 NM to IRQEV	* RNAV only.	
8600	008°	7900	7300	6800	*5700	*4340	IRQEV
GP 3.60° TCH 60	2.3 NM		1.9 NM	1.8 NM	2.7 NM	3.5 NM	3.3 NM
CATEGORY		A		B		C	
LPV DA#	3170-1		319 (300-1)		NA		
RNAV MDA†	3340-1		489 (500-1)		3340-1⅞ 489 (500-1⅞)		NA
RNAV MDA	3760-1¼		909 (900-1¼)		3760-2½ 909 (900-2½)		NA
CIRCLING	3760-1¼		876 (900-1¼)		3760-2½ 876 (900-2½)		NA

ST GEORGE, UTAH
Orig-C 26MAY16

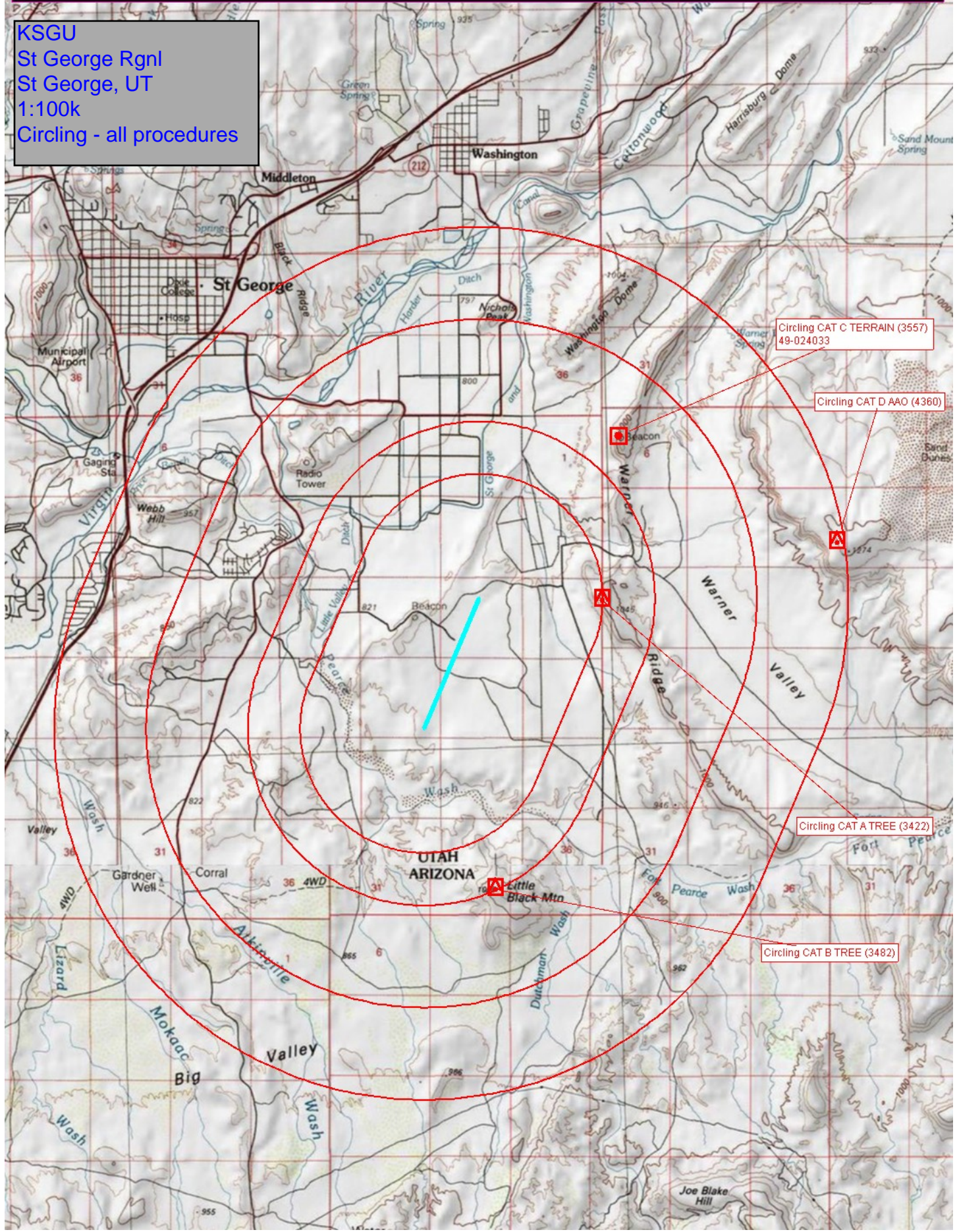
37°02'N-113°31'W

ST GEORGE RGNL (SGU)
RNAV (GPS) RWY 1

SW-4, 27 FEB 2020 to 26 MAR 2020

SW-4, 27 FEB 2020 to 26 MAR 2020

KSGU
St George Rgnl
St George, UT
1:100k
Circling - all procedures



Circling CAT C TERRAIN (3557)
49-024033

Circling CAT D AAO (4360)

Circling CAT A TREE (3422)

Circling CAT B TREE (3482)