

WAAS Ch 82199 W23A	APP CRS 233°	Rwy Idg TDZE Apt Elev	6007 700 700
--	------------------------	-----------------------------	---

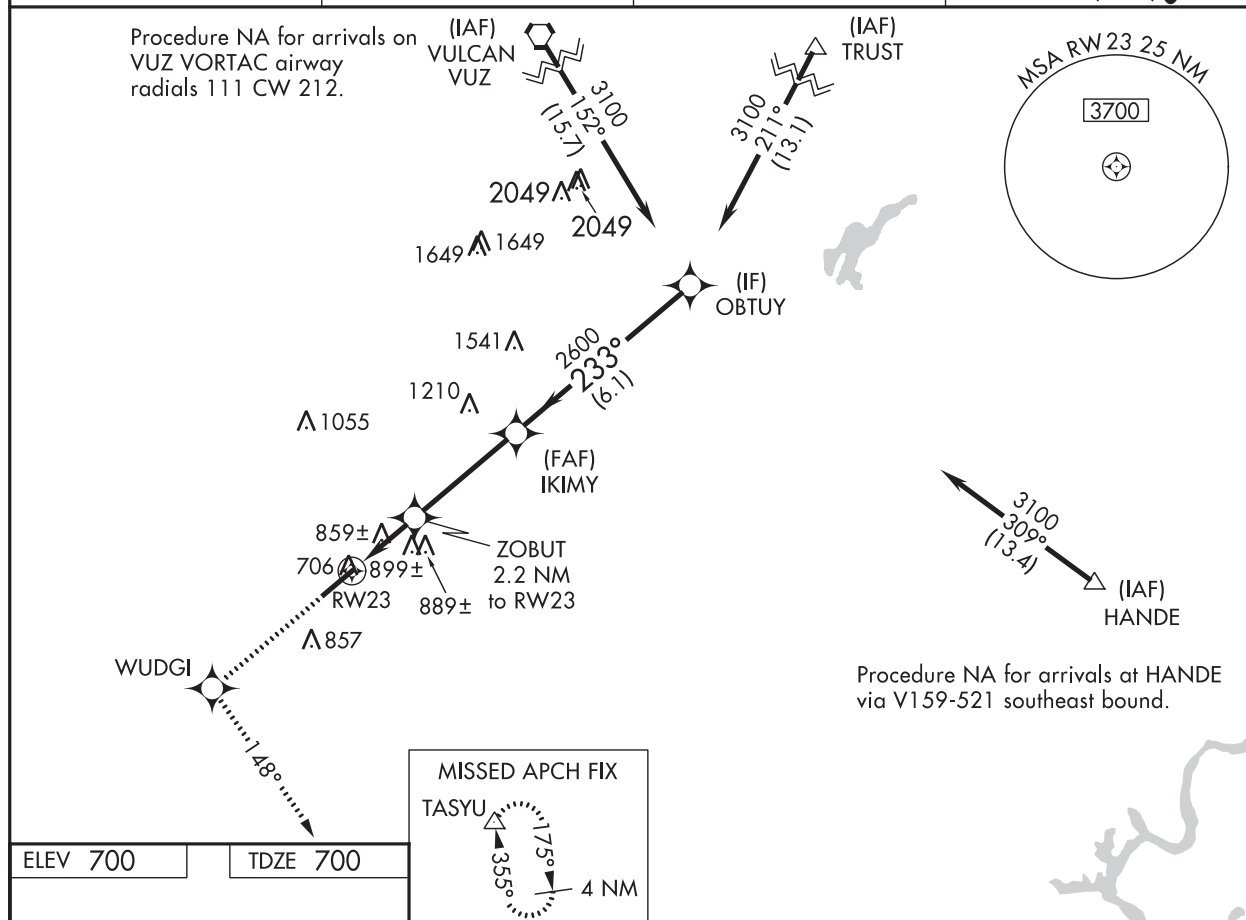
OLD

RNAV (GPS) RWY 23

BESSEMER (EKY)

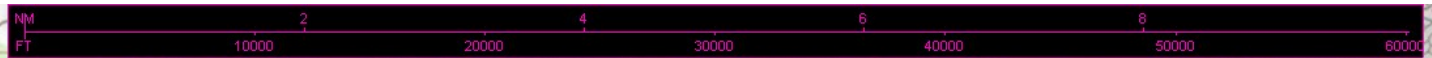
<p>⚠ For uncompensated Baro-VNAV systems, LNAV/VNAV NA below -16°C (4°F) or above 54°C (130°F). DME/DME RNP-0.3 NA. Helicopter visibility reduction below ¾ SM NA. When local altimeter setting not received, use Alabaster altimeter setting and increase all DA 41 feet and all MDA 60 feet, increase LNAV Cat C and D visibility ¼ mile. Baro-VNAV and VDP NA when using Alabaster altimeter setting.</p>	<p>MISSED APPROACH: Climb to 4000 direct WUDGI and on track 148° to TASYU and hold, continue climb-in-hold to 4000.</p>
---	--

AWOS-3PT 118.825	BIRMINGHAM APP CON 124.9 351.85	CLNC DEL 123.75	UNICOM 123.0 (CTAF) ①
----------------------------	---	---------------------------	---------------------------------



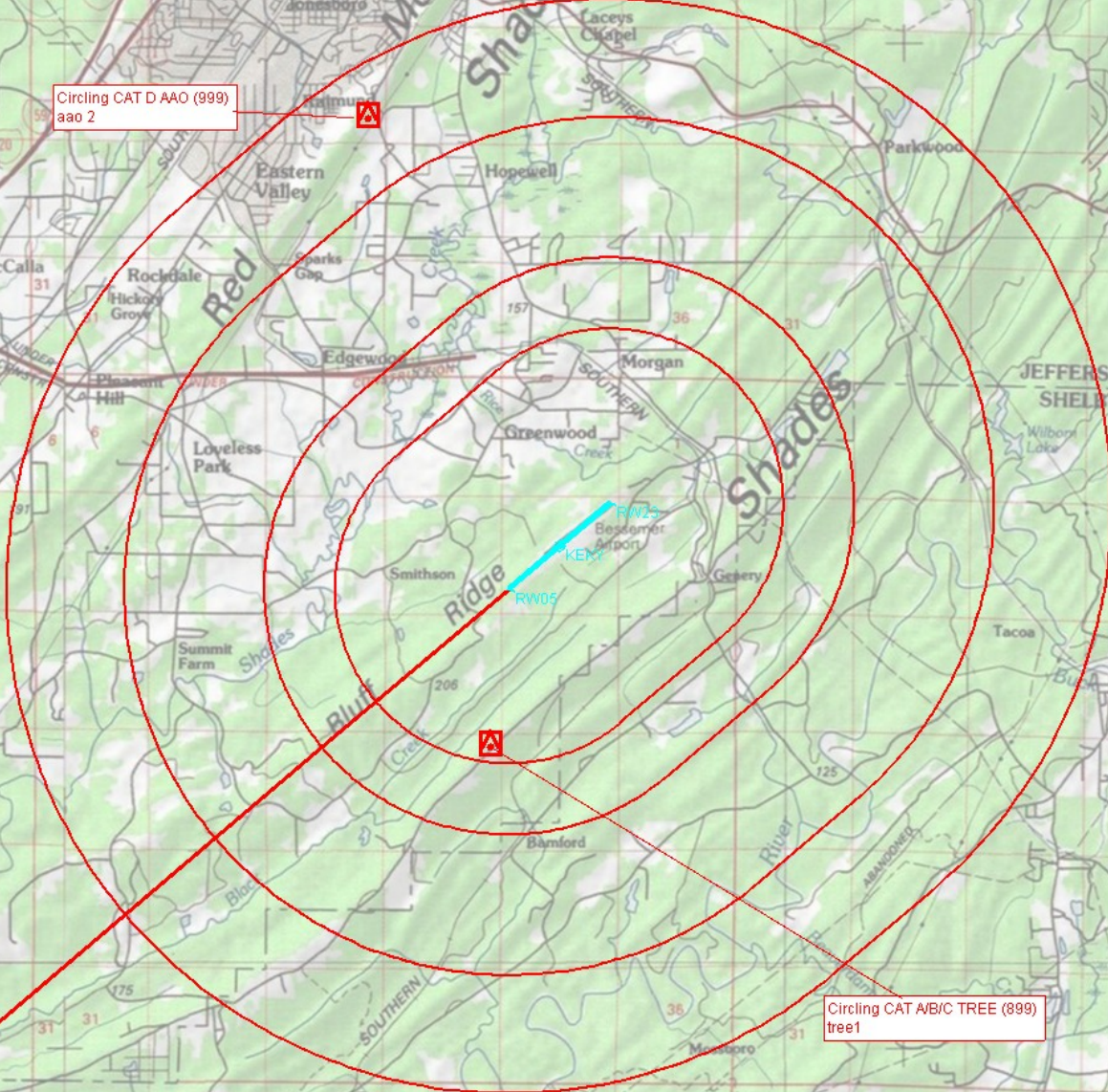
ELEV 700 TDZE 700

<p>233° to RW23</p> <p>6007 X 100</p> <p>HIRL Rwy 5-23 ①</p> <p>REIL Rwy 5 and 23 ①</p>		<p>MISSED APCH FIX</p> <p>TASYU</p> <p>175°</p> <p>355°</p> <p>4 NM</p>		<p>4000 WUDGI tr 148° TASYU</p>		<p>OBTUY</p>
<p>* LNAV only</p>		<p>ZOBUT 2.2 NM to RW23</p>		<p>IKIMY 2600</p>		<p>3100</p>
<p>RW23</p>		<p>* 1.3 NM to RW23</p>		<p>1440*</p>		<p>2600</p>
<p>1.3 NM</p>		<p>0.9 NM</p>		<p>3.6 NM</p>		<p>6.1 NM</p>
CATEGORY		A		B		C
LPV DA		972-1		272 (300-1)		
LNAV/VNAV DA		1170-1¾		470 (500-1¾)		
LNAV MDA		1160-1 460 (500-1)		1160-1¼ 460 (500-1¼)		1160-1½ 460 (500-1½)
CIRCLING		1200-1 500 (500-1)		1220-1½ 520 (600-1½)		1260-2 560 (600-2)



KEY
BESSEMER
BESSEMER, AL
CIRCLING

Circling CAT D AA0 (999)
aa0 2



Circling CAT A/B/C TREE (899)
tree1