

Flight Procedures Cover Page	Task Action: P-NOTAM	Task Type: IAP	Estimated Chart Date: 07/15/2021	APWS Task ID: 19F9E332CC334E0E8E33B952DFE5E9ED	APWS Project ID: 1BA7A46D0EB340DAA3B9DDF1A64C7D8C
Procedure: ILS OR LOC RWY 1R AMDT 24C		Enroute: NO	Specialist: Miller, Ralph		Agreement Number:
Airport ID: KIAD			Airport City: WASHINGTON		State: DC
Facility ID: IAD	Facility Type: ILS	Flight Inspection Remark Type:			
<div>Procedure Comments: P-NOTAM.</div> <div>ORDER 8260.3, CHAPTER 2, NEW CIRCLING CRITERIA APPLIED</div> <div>ACTIVE DATA USED.</div> <div>CONTACT JASON KRETSCHMER, AJV-A421, 405-954-5077.</div> <div><div>Digitally signed by JASON KRETSCHMER Apr 25, 2021</div><div><div>QUALITY 10 CHECKED</div><div>QUALITY 38 CHECKED</div></div></div>					

WASHINGTON, DC

AL-5100 (FAA)

20310

LOC/DME I-IAD	APP CRS	Rwy Idg	11500
110.1	011°	TDZE	312
Chan 38		Apt Elev	312

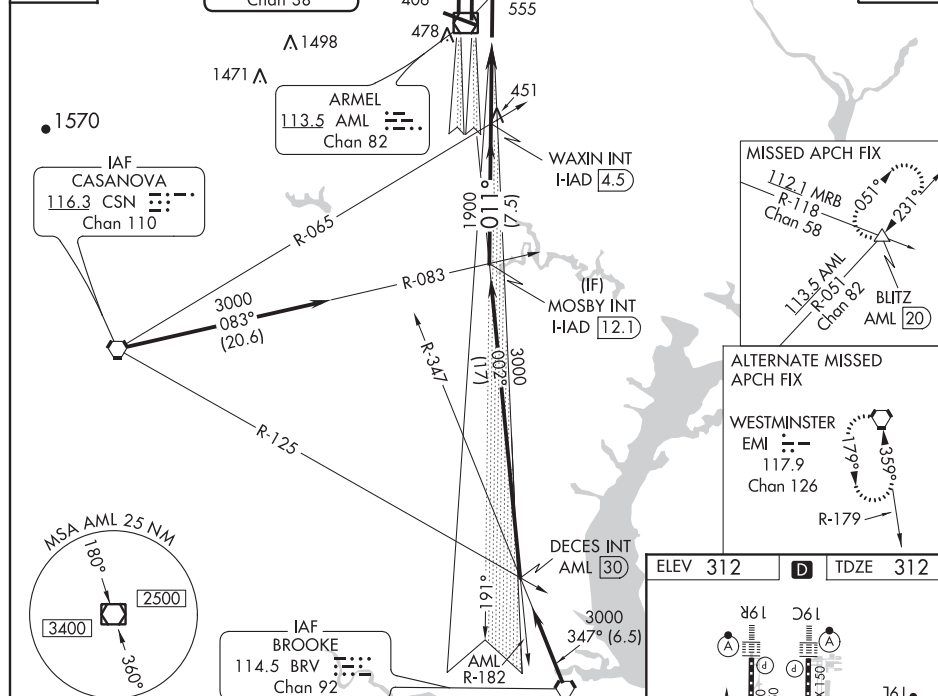
OLD
ILS or LOC RWY 1R
 WASHINGTON DULLES INTL (IAD)

Simultaneous approach authorized with Rwy 1C or 1L.	ALSIF-2 	MISSED APPROACH: Climb to 800 then climbing right turn to 3000 via heading 060° and AML VOR/DME R-051 to BLITZ INT/AML 20 DME and hold.
--	--------------------	--

POTOMAC APP CON 120.45 306.925 (241°-330°) 128.525 306.925 (091°-240°) 126.1 338.25 (331°-090°)	DULLES TOWER 120.1 317.8 (Rwy 1R/19L) 120.25 348.6 (Rwy 1C/19C) 134.425 348.6 (Rwys 1L/19R and 12/30)	GND CON 121.9 317.8 (EAST) 121.625 348.6 (WEST)	CLNC DEL 135.7 317.8
--	--	--	---------------------------------------

D-ATIS 134.85	LOCALIZER 110.1 I-IAD Chan 38	CPDLC
--------------------------------	---	--------------

NE-3, 05 NOV 2020 to 03 DEC 2020

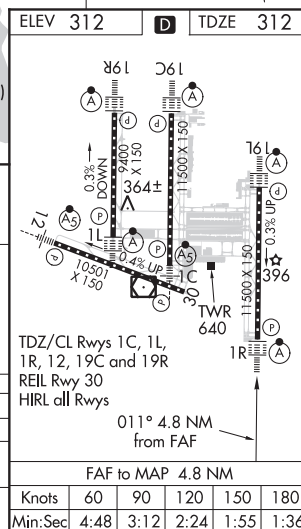


VGS and ILS Glidepath not coincident (VGS Angle 3.00/TCH 72). Procedure Turn NA MOSBY INT I-IAD 12.1 WAXIN INT I-IAD 4.5 3000 011° GS 3.00° TCH 53 7.5 NM 3.6 NM 1 NM 0.2 NM				800 3000 hdg 060° AML R-051 BLITZ △
CATEGORY A B C D				
S-ILS 1R 512/18 200 (200-1/2)				
S-LOC 1R 760/24 448 (500-1/2) 760/40 448 (500-3/4) 760/50 448 (500-1)				
CIRCLING 940-1 628 (700-1) 940-1 3/4 628 (700-1 1/4) 940-2 628 (700-2)				

NE-3, 05 NOV 2020 to 03 DEC 2020

 WASHINGTON, DC
 Amdt 24B 03MAY12

38°57'N-77°28'W

 WASHINGTON DULLES INTL (IAD)
ILS or LOC RWY 1R


NM 2 4 6 8 10
FT 20000 40000 60000

KIAD

NEW CIRCLING RADII APPLIED

CAT D MINS RAISED TO 1060

OBST 51-022893 695 MSL +300 FT

ROC + 50 FT ACCURACY CODE =
1045 ROUNDED TO 1060.

NEW RADII:

A: 1.30, B: 1.82, C: 2.85, D: 3.73 NM

