

Flight Procedures Cover Page	Task Action: P-NOTAM	Task Type: IAP	Estimated Chart Date: 06/17/2021	APWS Task ID: 19AE255DE341416DAB81FB86FEEBB07B	APWS Project ID: F9CC7267D9724604A321BB4B7796BE1F
Procedure: RNAV (GPS) Y RWY 14R AMDT 1A		Enroute: NO	Specialist: Schones, Christopher		Agreement Number:
Airport ID: KBFI		Airport City: SEATTLE		State: WA	
Facility ID:	Facility Type:	Flight Inspection Remark Type:			
<p>Procedure Comments: PROCESSED IAW AIRCRAFT OPERATIONS GROUP (AJF-10) MEMO, APRIL 29, 2020, SUBJECT: FLIGHT INSPECTION REVIEW NOT REQUIRED</p> <p>CONTACT DON LANIER 405-954-8242</p> <p>This cancels FDC NOTAM 9/9245 P-NOTAM FDC 1/4541</p>					

QUALITY
30 BBLUE 2/12/21
CHECKED

QUALITY
41
CHECKED

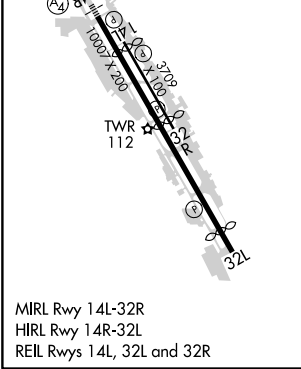
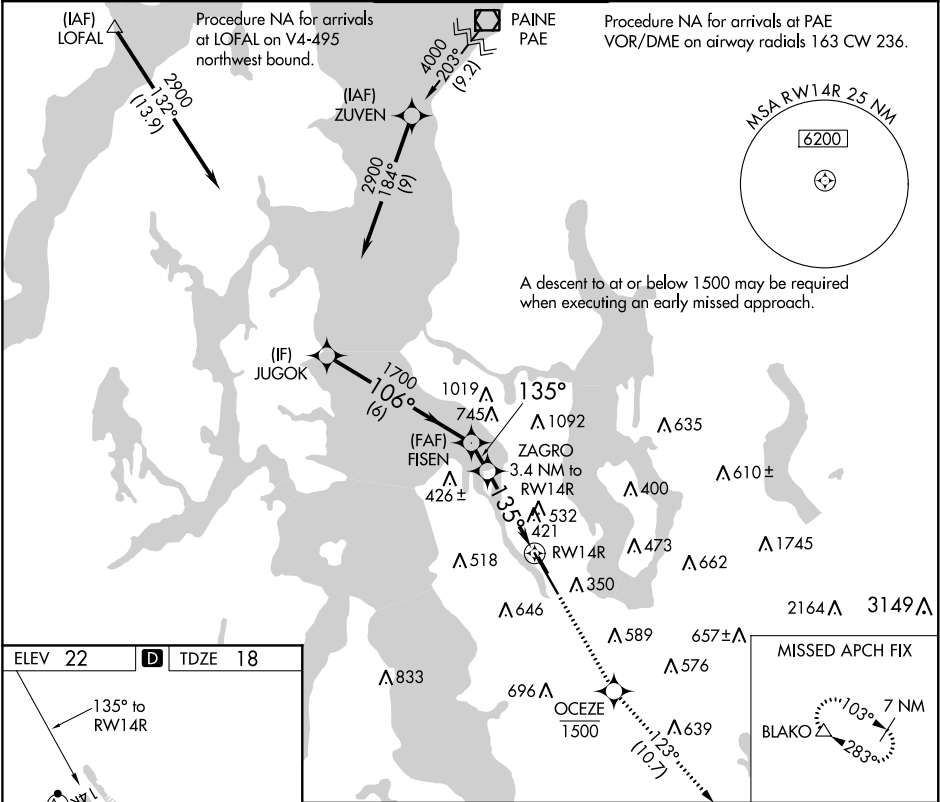
APP CRS	Rwy Idg	9120
135°	TDZE	18
	Apt Elev	22

OLD

RNAV (GPS) Y RWY 14R
BOEING FIELD/KING COUNTY INTL (BFI)

<p>⚠ Circling NA for Cats C and D northeast of Rwy 14L-32R. DME/DME RNP -0.3 NA. For inop ALS, increase LNAV Cat C and D visibility to 1½ SM. Rwy 14R helicopter visibility below RVR 4000 NA. Circling Rwy 32R NA at night.</p>	<p>MALSF</p> <p>⚠</p>	<p>MISSED APPROACH: Climb direct OCEZE, cross OCEZE at or below 1500, then climb to 6400 on track 123° to BLAKO and hold, continue climb-in-hold to 6400.</p>
--	-----------------------	---

ATIS 127.75	SEATTLE APP CON 119.2 284.7	BOEING TOWER 120.6 257.8	GND CON 121.9	CLNC DEL 132.4
----------------	--------------------------------	-----------------------------	------------------	-------------------



JUGOK	FISEN	ZAGRO	OCEZE	6400	BLAKO
2900	1700	1280	1500	tr 123°	△
<p>6 NM 1.1 NM 1.7 NM 1.7 NM</p>					
CATEGORY	A	B	C	D	
LNAV MDA	680/40	662 (700-¾)	680-1¾	662 (700-1¾)	
CIRCLING	760-1 738 (800-1)	880-1¼ 858 (900-1¼)	960-2¾ 938 (1000-2¾)	960-3 938 (1000-3)	