

DME DME Assessment Results for ROTRY6 path KSTL:RW11:DER_SKUTR

Results Summary

Flyability:	Completed
DME/DME:	Completed - No Critical DMEs
Name:	Lisa A-CTR Thrysoe
Project File:	C:\Users\Lisa A-CTR Thrysoe\OneDrive - Federal Aviation Administration\Desktop\DME DME Screening\KSTL\ROTRY 6 (RNAV) SID DME 20241125.tgs
Output File:	C:\Users\Lisa A-CTR Thrysoe\OneDrive - Federal Aviation Administration\Desktop\DME DME Screening\KSTL\KSTL [IFPA] ROTRY6 20241127_1159 EST\KSTL-RW11-DER_SKUTR\KSTL ROTRY6 SID RW11 SKUTR 20241127_1159 EST.pdf
Procedure Name:	ROTRY6
Software: DmeDmePlugin:	7.4.1
Date/Time:	11/27/2024 11:59 EST
Databases:	MITRE 3DEP 3 arcsec

Failures

No Failures

Warnings

No Warnings

Informational

No Informational

Notes For Flight Check

None

Flight Plan

Name	Type	Lat/Lon	Altitude (ft)	VNAV Mode	Ground Speed (kts)	Turn Type	Leg Type
KSTL:RW11:DER	WP	N38° 44' 48.4521", W090° 22' 59.3854"	555.2	VNAV	130	FLY_OVER	TF
FUNKE	WP	N38° 43' 39.2600", W090° 15' 35.5800"	2000	VNAV	240	FLY_BY	TF
BEART	WP	N38° 45' 35.0400", W090° 12' 39.3000"	2500	VNAV	240	FLY_BY	TF
GMSKI	WP	N38° 50' 05.2800", W090° 12' 43.2300"	3400	VNAV	240	FLY_BY	TF
ROTRY	WP	N39° 22' 37.6900", W090° 13' 11.8800"	5000	VNAV	200	FLY_BY	TF
SKUTR	WP	N40° 04' 06.0900", W090° 03' 39.1200"	13417.8	VNAV	240	FLY_BY	TF

Climb Gradient:
500.0 ft/NM up to 1117.0 ft MSL
200.0 ft/NM

Flyability

Flight Type:	SID
Selected Airport:	KSTL [IFPA]
Climb Gradient:	500.0 ft/NM up to 1117.0 ft MSL 200.0 ft/NM
Speeds:	130 at the Runway DER
	145 at the end of the VA or VI leg
	200 Ground Speed to 11000 FT
	240 Ground Speed to 18000 FT
	260 Ground Speed to 24000 FT
	340 Ground Speed above 24000 FT
Descent During a Turn:	Allowed
VNAV Mode:	Flight Plan

DME DME Assessment Results for ROTRY6 path KSTL:RW11:DER_SKUTR

DME/DME	
RNP:	RNP 2
Flight Mode:	Manual
Line of Sight (DTED Level 0 Max):	Evaluated
Inertial Drift:	Enabled
Initial Drift:	0.558 NM
INS Drift Rate:	8.0 NM/Hour
Range Mode:	OSV
RNP Edges:	Evaluated
Min DME Range:	3.0 NM
DME Types:	DME, VOR-DME, VORTAC, TACAN
DME Include Angles:	30 to 150
Critical DMEs:	Allowed
DoD Facilities:	Not included
Foreign Facilities:	Not included
High DMEs:	Included
Low DMEs:	Included
Terminal DMEs:	Included
Flight Check DMEs:	Not selected
Higher Altitudes:	Not Evaluated
Near Maximum Altitude:	Not Evaluated
Automatic ESVs:	Not enabled
Disabled DMEs:	None

DME/DME (Continued)										
DMEs Used										
#	Name	Lat/Lon	MAGVAR	Range	Type	Source	Critical	Status	Time	Distance
1	IJX	N39° 46' 35.4757", W090° 14' 18.9790"	0.0 E	25	T		NO	Enabled	37.2 %	34.8 %
2	CSX	N38° 45' 09.8799", W090° 21' 39.4546"	0.0 E	130	DL		NO	Enabled	84.9 %	85.9 %
3	PIA	N40° 40' 48.2504", W089° 47' 33.9117"	4.0 E	40	L		NO	Enabled	0.5 %	0.6 %
4	STL	N38° 51' 38.6039", W090° 28' 56.4560"	1.0 E	130	H		NO	Enabled	46.2 %	49.7 %
5	UIN	N39° 50' 52.3489", W091° 16' 44.1281"	5.0 E	130	H		NO	Enabled	49.5 %	47.2 %
6	FTZ	N38° 41' 39.6013", W090° 58' 16.5696"	5.0 E	40	L		NO	Enabled	8.4 %	8.7 %
7	SPI	N39° 50' 23.0394", W089° 40' 39.8488"	1.0 W	130	H		NO	Enabled	51.6 %	48.4 %
8	TOY	N38° 44' 20.9386", W089° 55' 06.9333"	4.0 E	40	L		NO	Enabled	39.8 %	43.8 %

DME DME Assessment Results for ROTRY6 path KSTL:RW11:DER_SKUTR

Flight Check DME Selection

Distance [NM]	Selected DMEs					Alternate
0.0						
2.6	STL	FTZ				
8.6						
10.9	TOY	CSX				
14.0	TOY	CSX	STL			
14.1	TOY	CSX	STL	FTZ		
15.9	TOY	CSX	STL			
20.2	TOY	CSX	UIN	STL		
25.5	STL	TOY	CSX			
44.9	TOY	STL				
45.4	UIN	STL	SPI	CSX	TOY	IJX
46.0	UIN	STL	CSX	IJX	TOY	
46.1	TOY	SPI	STL			
46.2	TOY	SPI	IJX	STL		
46.9	UIN	STL	SPI	CSX	TOY	IJX
49.5	UIN	STL	CSX	SPI	IJX	
51.9	UIN	CSX	SPI	IJX		
66.7	SPI	CSX	IJX			
68.2	UIN	CSX	SPI			
76.0	SPI	CSX	UIN	IJX		
84.2	SPI	CSX	UIN			
84.4	SPI	CSX				
87.6	SPI	PIA	CSX			

Inertial Drift Segments

#	Start Location	End Location	Length [NM]
1	N38° 44' 47.3288", W090° 22' 57.1065"	N38° 44' 02.3707", W090° 19' 53.0474"	2.5752
2	N38° 45' 19.9425", W090° 13' 02.3020"	N38° 47' 30.2898", W090° 12' 40.9750"	2.3099

Available DMEs by Waypoints

Waypoint Before	Waypoint After	DME List	Suggested DMEs
KSTL:RW11:DER	FUNKE	STL, FTZ	
FUNKE	BEART	STL, FTZ	
BEART	GMSKI	CSX, TOY	
GMSKI	ROTRY	IJX, CSX, STL, UIN, FTZ, SPI, TOY	
ROTRY	SKUTR	IJX, CSX, PIA, STL, UIN, SPI, TOY	

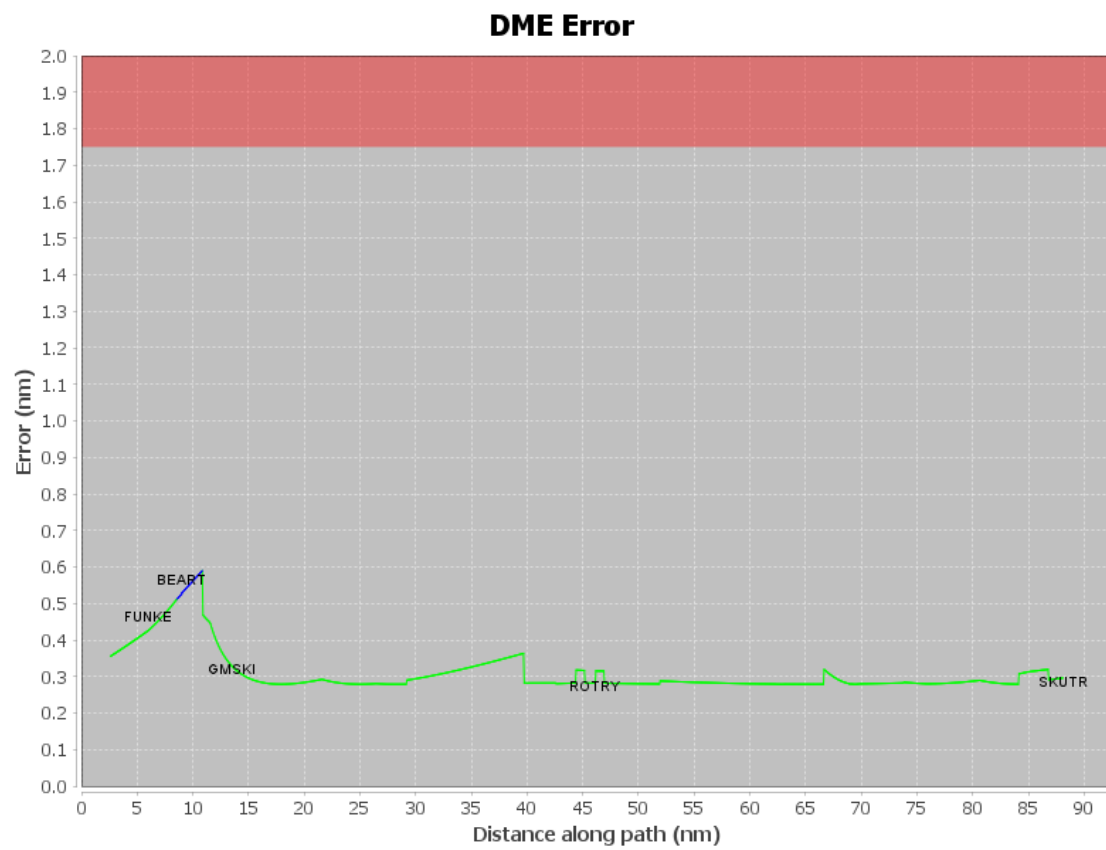
User Data Files

#	File Name
	None

User DMEs

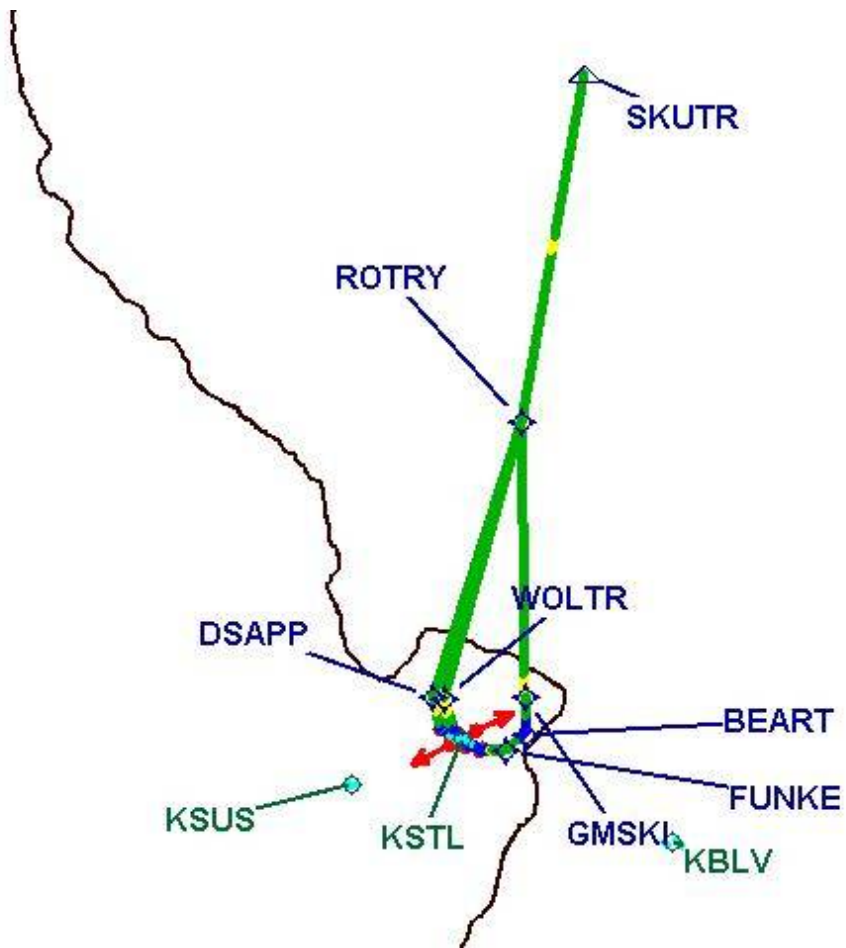
#	Name	Lat/Lon	MAGVAR	Range	Elevation [ft]	Frequency	Replaces	Status
1	UIN FAA 861428-30 UIN	N39° 50' 52.3489", W091° 16' 44.1281"	5.0 E	130	715.1	null	UIN FAA 861428-30	
ESV:		Bearing [True]: 132.0° to 147.0° Bearing [Mag]: 127.0° to 142.0°				Arc Distance: Out to 76.0 NM Altitude: 4000.0 to 15300.0 ft		
2	UIN FAA 861428-24 UIN	N39° 50' 52.3489", W091° 16' 44.1281"	5.0 E	130	715.1	null	UIN FAA 861428-24	
ESV:		Bearing [True]: 75.0° to 125.0° Bearing [Mag]: 70.0° to 120.0°				Arc Distance: Out to 60.0 NM Altitude: 4000.0 to 14500.0 ft		
3	TOY FAA 704225-4 TOY	N38° 44' 20.9386", W089° 55' 06.9333"	4.0 E	40	576.2	116.0	TOY FAA 704225-4	
ESV:		Bearing [True]: 274.0° to 347.0° Bearing [Mag]: 270.0° to 343.0°				Arc Distance: Out to 65.0 NM Altitude: 5000.0 to 20000.0 ft		

DME DME Assessment Results for ROTRY6 path KSTL:RW11:DER_SKUTR



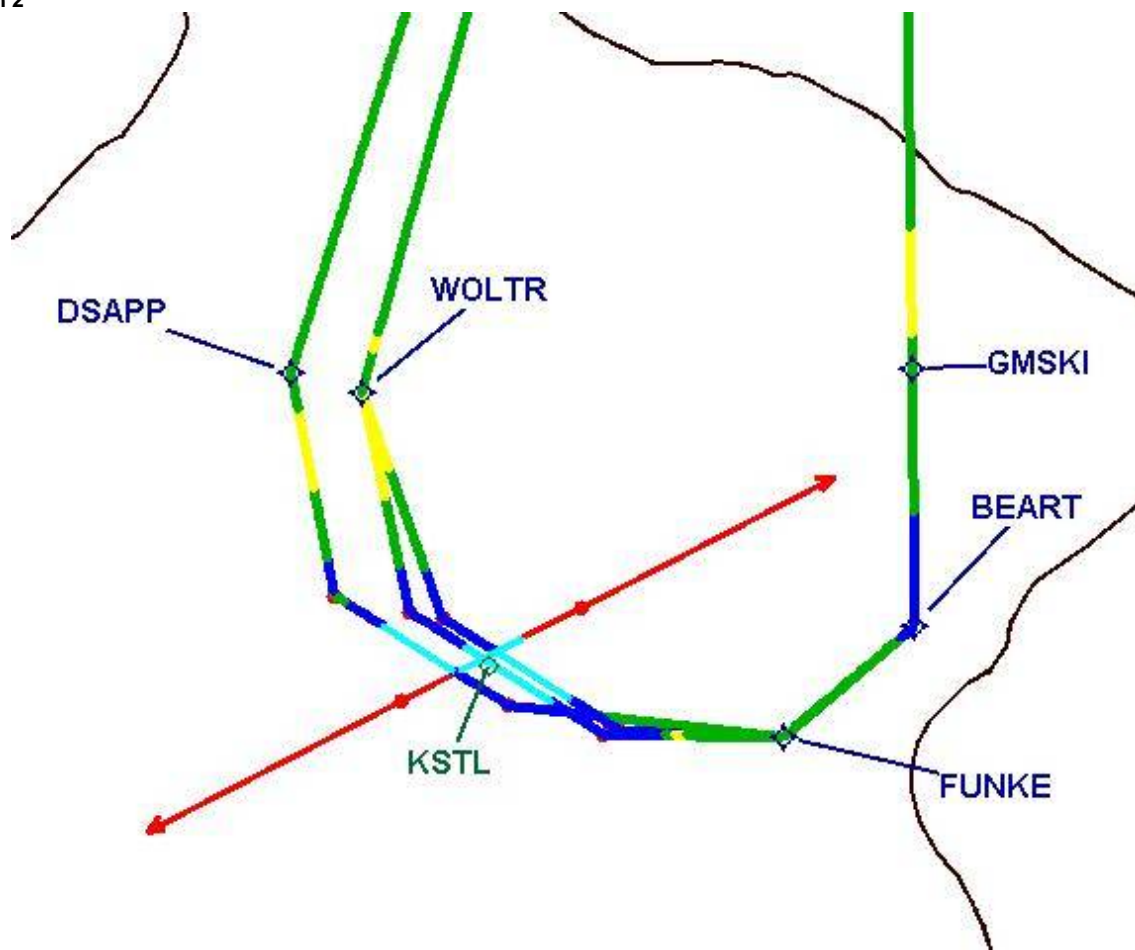
DME DME Assessment Results for ROTRY6 path KSTL:RW11:DER_SKUTR

Graphic Depiction 1

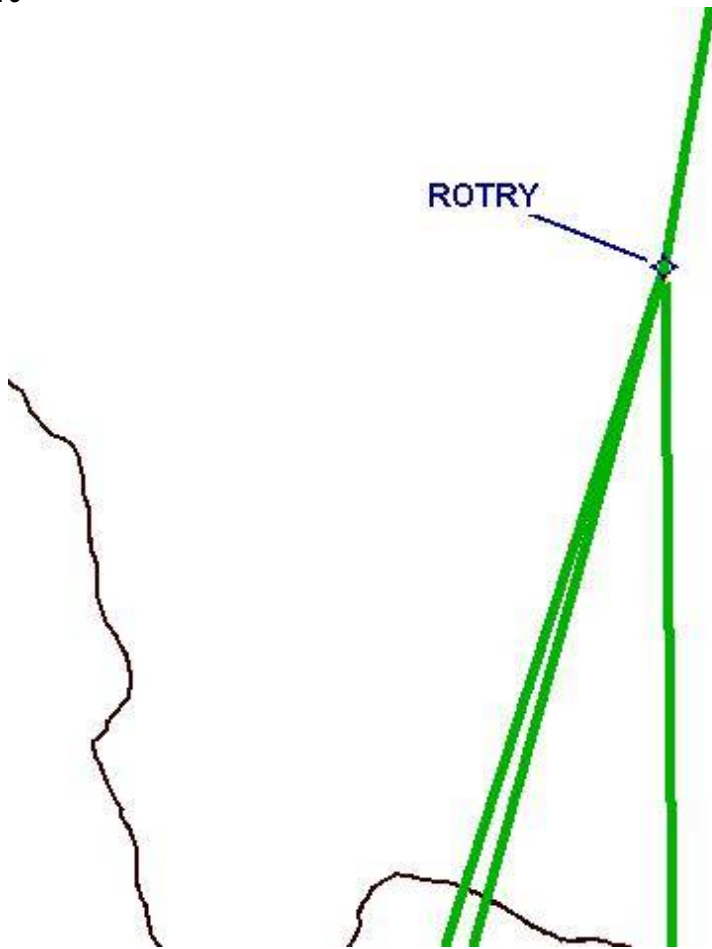


DME DME Assessment Results for ROTRY6 path KSTL:RW11:DER_SKUTR

Graphic Depiction 2

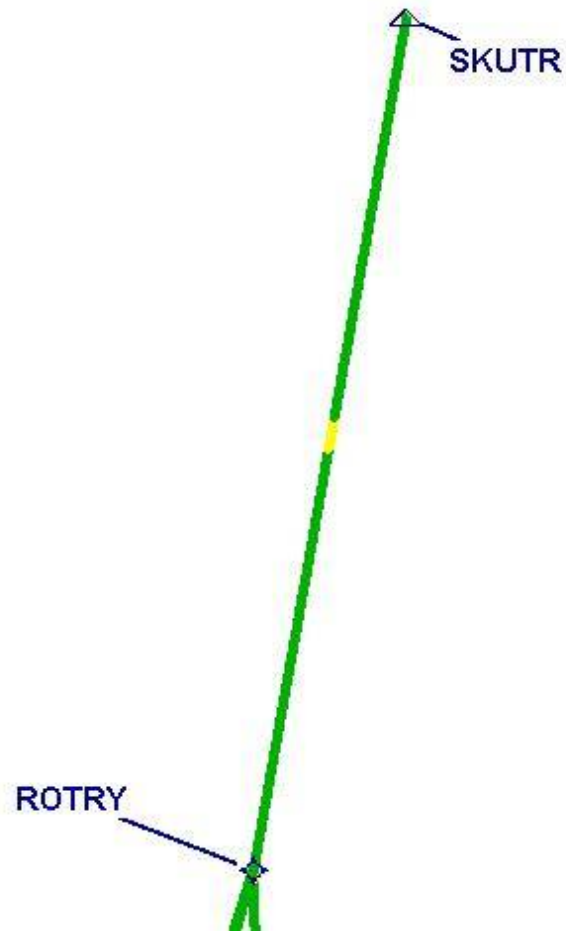


Graphic Depiction 3



DME DME Assessment Results for ROTRY6 path KSTL:RW11:DER_SKUTR

Graphic Depiction 4



DME DME Assessment Results for ROTRY6 path KSTL:RW12L:DER_FUNKE

Results Summary	
Flyability:	Completed
DME/DME:	Completed - No Critical DMEs
Name:	Lisa A-CTR Thrysoe
Project File:	C:\Users\Lisa A-CTR Thrysoe\OneDrive - Federal Aviation Administration\Desktop\DME DME Screening\KSTL\ROTRY 6 (RNAV) SID DME 20241125.tgs
Output File:	C:\Users\Lisa A-CTR Thrysoe\OneDrive - Federal Aviation Administration\Desktop\DME DME Screening\KSTL\KSTL [IFPA] ROTRY6 20241127_1159 EST\KSTL-RW12L-DER_FUNKE\KSTL ROTRY6 SID RW12L FUNKE 20241127_1159 EST.pdf
Procedure Name:	ROTRY6
Software: DmeDmePlugin:	7.4.1
Date/Time:	11/27/2024 11:59 EST
Databases:	MITRE 3DEP 3 arcsec

Failures
No Failures

Warnings
No Warnings

Informational
No Informational

Notes For Flight Check
None

Flight Plan							
Name	Type	Lat/Lon	Altitude (ft)	VNAV Mode	Ground Speed (kts)	Turn Type	Leg Type
KSTL:RW12L:DER	WP	N38° 44' 18.9859", W090° 20' 22.5077"	604.3	VNAV	130	FLY_OVER	TF
FUNKE	WP	N38° 43' 39.2600", W090° 15' 35.5800"	2000	VNAV	240	FLY_BY	TF
Climb Gradient: 500.0 ft/NM up to 1117.0 ft MSL 200.0 ft/NM							

Flyability	
Flight Type:	SID
Selected Airport:	KSTL [IFPA]
Climb Gradient:	500.0 ft/NM up to 1117.0 ft MSL 200.0 ft/NM
Speeds:	130 at the Runway DER
	145 at the end of the VA or VI leg
	200 Ground Speed to 11000 FT
	240 Ground Speed to 18000 FT
	260 Ground Speed to 24000 FT
	340 Ground Speed above 24000 FT
Descent During a Turn:	Allowed
VNAV Mode:	Flight Plan

DME DME Assessment Results for ROTRY6 path KSTL:RW12L:DER_FUNKE

DME/DME	
RNP:	RNP 2
Flight Mode:	Manual
Line of Sight (DTED Level 0 Max):	Evaluated
Inertial Drift:	Enabled
Initial Drift:	0.558 NM
INS Drift Rate:	8.0 NM/Hour
Range Mode:	OSV
RNP Edges:	Evaluated
Min DME Range:	3.0 NM
DME Types:	DME, VOR-DME, VORTAC, TACAN
DME Include Angles:	30 to 150
Critical DMEs:	Allowed
DoD Facilities:	Not included
Foreign Facilities:	Not included
High DMEs:	Included
Low DMEs:	Included
Terminal DMEs:	Included
Flight Check DMEs:	Not selected
Higher Altitudes:	Not Evaluated
Near Maximum Altitude:	Not Evaluated
Automatic ESVs:	Not enabled
Disabled DMEs:	None

DME/DME (Continued)										
DMEs Used										
#	Name	Lat/Lon	MAGVAR	Range	Type	Source	Critical	Status	Time	Distance
1	CSX	N38° 45' 09.8799", W090° 21' 39.4546"	0.0 E	130	DL		NO	Enabled		
2	STL	N38° 51' 38.6039", W090° 28' 56.4560"	1.0 E	130	H		NO	Enabled	37.7 %	46.1 %
3	FTZ	N38° 41' 39.6013", W090° 58' 16.5696"	5.0 E	40	L		NO	Enabled	37.7 %	46.1 %
4	TOY	N38° 44' 20.9386", W089° 55' 06.9333"	4.0 E	40	L		NO	Enabled		

Flight Check DME Selection						
Distance [NM]	Selected DMEs					Alternate
0.0						
1.8	TOY	CSX				
1.9						
2.1	STL	FTZ				

Inertial Drift Segments			
#	Start Location	End Location	Length [NM]
1	N38° 44' 17.8540", W090° 20' 20.2137"	N38° 43' 44.2519", W090° 18' 14.7630"	1.7874
2	N38° 43' 44.1565", W090° 18' 11.7017"	N38° 43' 43.5834", W090° 17' 53.3342"	0.2397

Available DMEs by Waypoints			
Waypoint Before	Waypoint After	DME List	Suggested DMEs
KSTL:RW12L:DER	FUNKE	CSX, STL, FTZ, TOY	

DME DME Assessment Results for ROTRY6 path KSTL:RW12L:DER_FUNKE

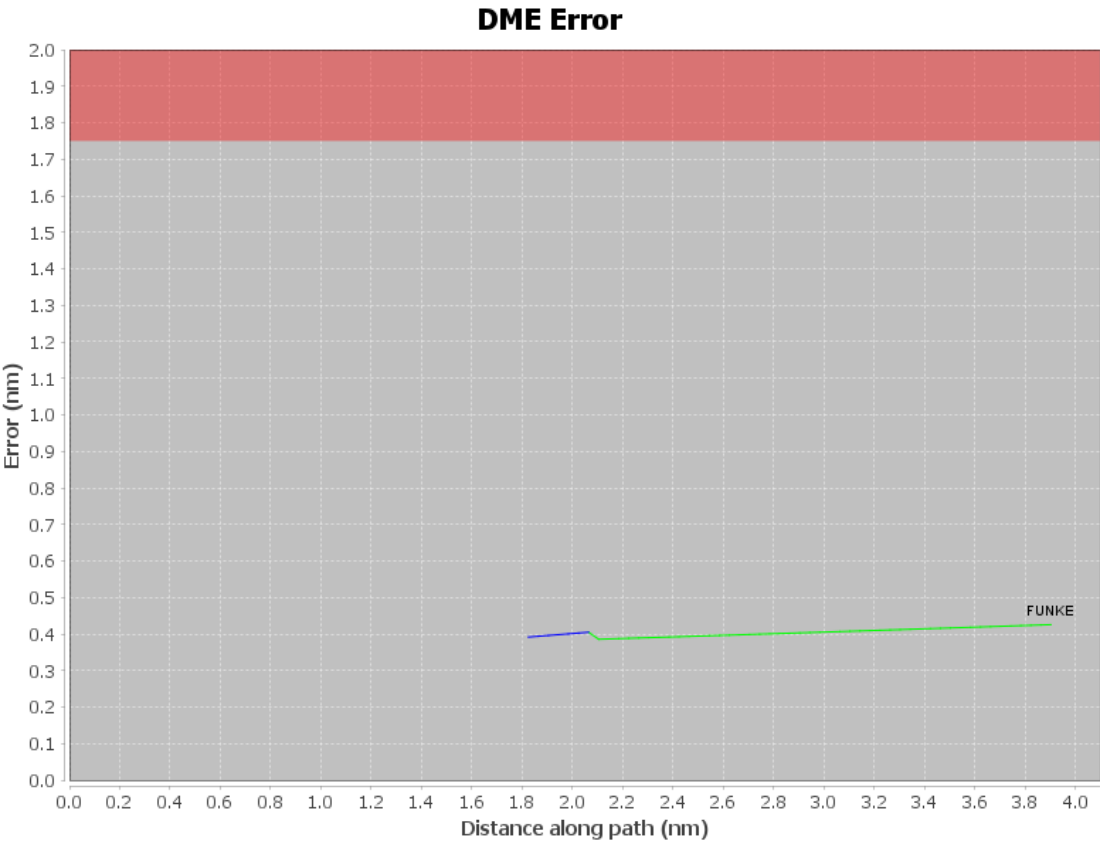
User Data Files

File Name

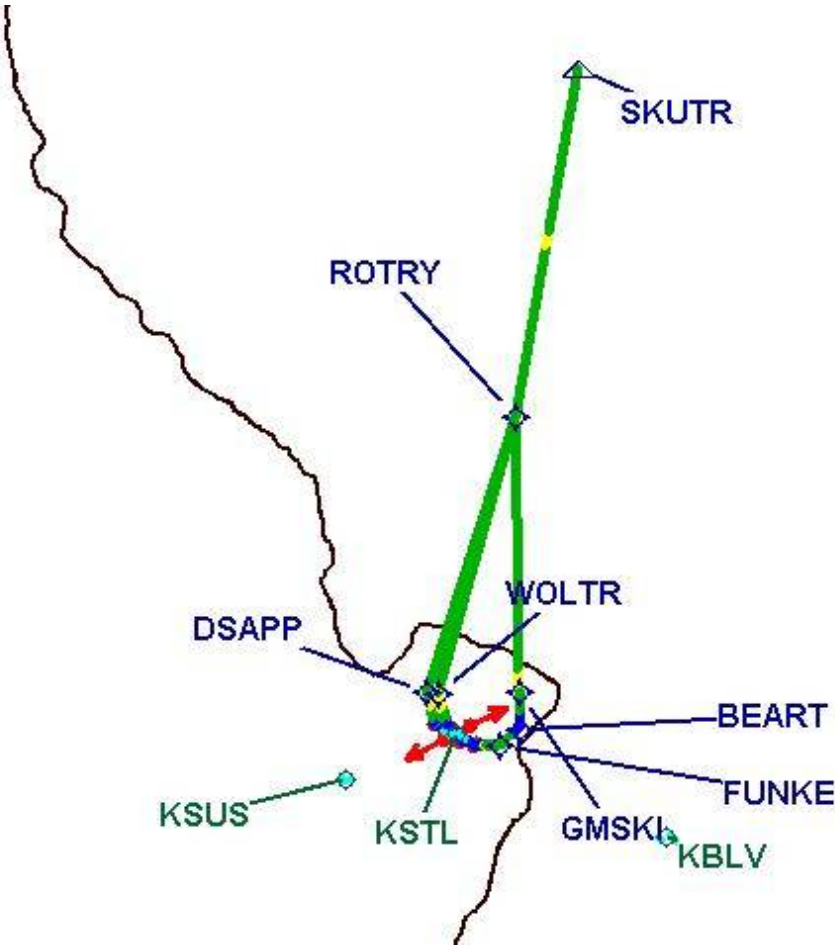
None

User DMEs

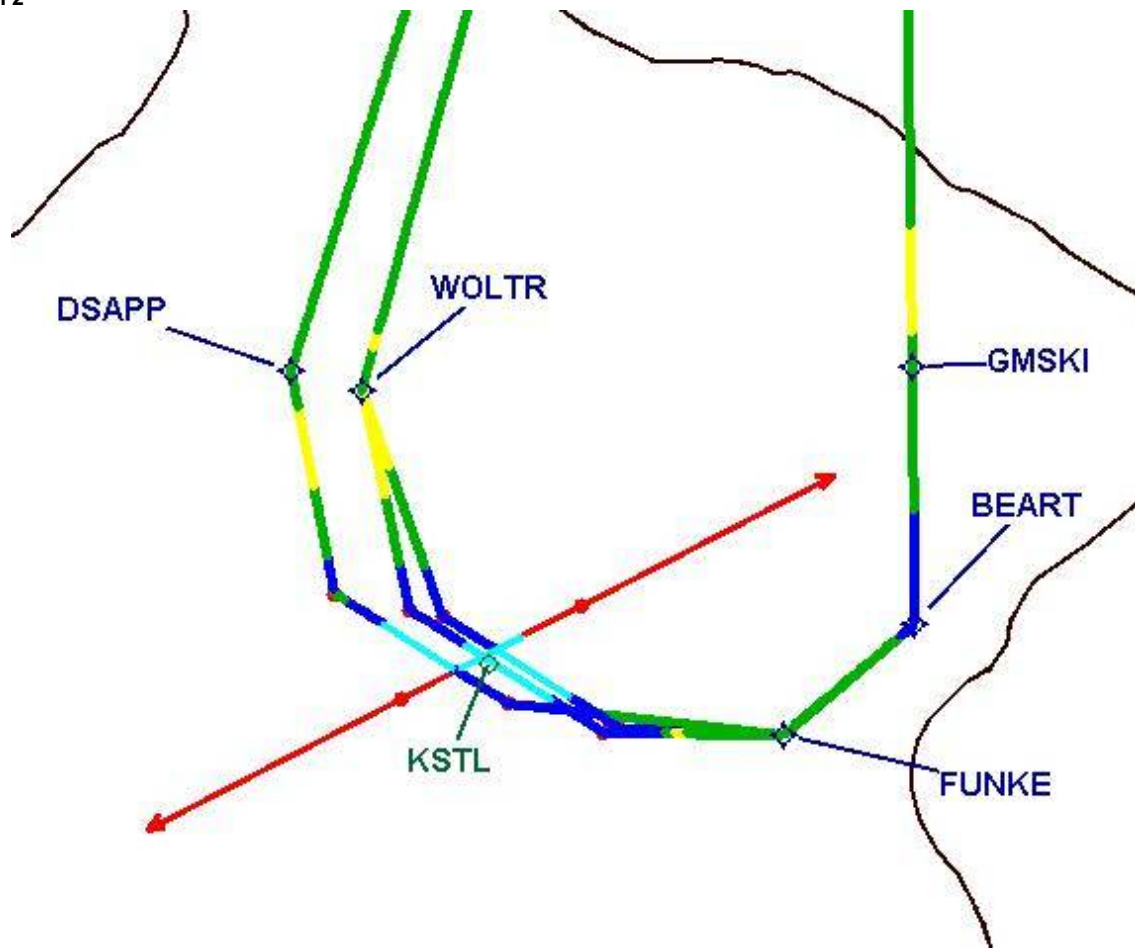
#	Name	Lat/Lon	MAGVAR	Range	Elevation [ft]	Frequency	Replaces	Status
1	UIN FAA 861428-30 UIN	N39° 50' 52.3489", W091° 16' 44.1281"	5.0 E	130	715.1	null	UIN FAA 861428-30	
ESV:		Bearing [True]: 132.0° to 147.0° Bearing [Mag]: 127.0° to 142.0°				Arc Distance: Out to 76.0 NM Altitude: 4000.0 to 15300.0 ft		
2	UIN FAA 861428-24 UIN	N39° 50' 52.3489", W091° 16' 44.1281"	5.0 E	130	715.1	null	UIN FAA 861428-24	
ESV:		Bearing [True]: 75.0° to 125.0° Bearing [Mag]: 70.0° to 120.0°				Arc Distance: Out to 60.0 NM Altitude: 4000.0 to 14500.0 ft		
3	TOY FAA 704225-4 TOY	N38° 44' 20.9386", W089° 55' 06.9333"	4.0 E	40	576.2	116.0	TOY FAA 704225-4	
ESV:		Bearing [True]: 274.0° to 347.0° Bearing [Mag]: 270.0° to 343.0°				Arc Distance: Out to 65.0 NM Altitude: 5000.0 to 20000.0 ft		



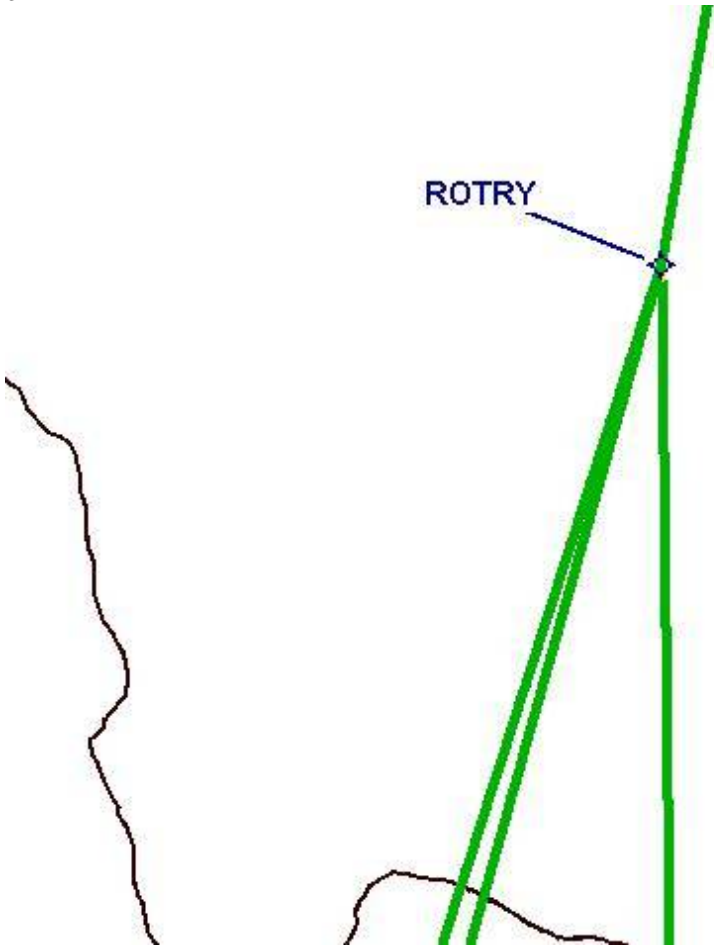
Graphic Depiction 1



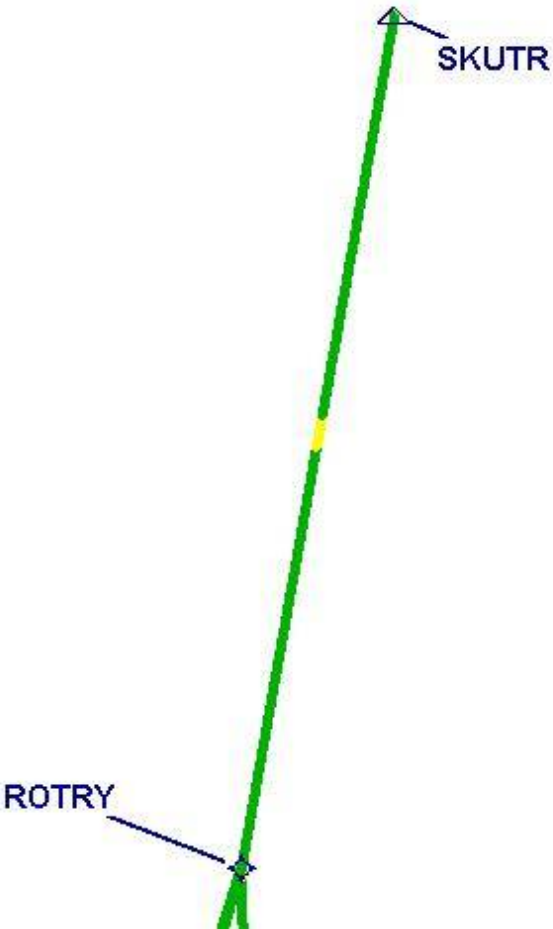
Graphic Depiction 2



Graphic Depiction 3



Graphic Depiction 4



DME DME Assessment Results for ROTRY6 path KSTL:RW12R:DER_FUNKE

Results Summary

Flyability:	Completed
DME/DME:	Completed - No Critical DMEs
Name:	Lisa A-CTR Thrysoe
Project File:	C:\Users\Lisa A-CTR Thrysoe\OneDrive - Federal Aviation Administration\Desktop\DME DME Screening\KSTL\ROTRY 6 (RNAV) SID DME 20241125.tgs
Output File:	C:\Users\Lisa A-CTR Thrysoe\OneDrive - Federal Aviation Administration\Desktop\DME DME Screening\KSTL\KSTL [IFPA] ROTRY6 20241127_1159 EST\KSTL-RW12R- DER_FUNKE\KSTL ROTRY6 SID RW12R FUNKE 20241127_1159 EST.pdf
Procedure Name:	ROTRY6
Software: DmeDmePlugin:	7.4.1
Date/Time:	11/27/2024 11:59 EST
Databases:	MITRE 3DEP 3 arcsec

Failures

No Failures

Warnings

No Warnings

Informational

No Informational

Notes For Flight Check

None

Flight Plan

Name	Type	Lat/Lon	Altitude (ft)	VNAV Mode	Ground Speed (kts)	Turn Type	Leg Type
KSTL:RW12R:DER	WP	N38° 44' 16.0145", W090° 20' 47.2720"	585.3	VNAV	130	FLY_OVER	TF
FUNKE	WP	N38° 43' 39.2600", W090° 15' 35.5800"	2000	VNAV	240	FLY_BY	TF
Climb Gradient: 500.0 ft/NM up to 1117.0 ft MSL 200.0 ft/NM							

Flyability

Flight Type:	SID
Selected Airport:	KSTL [IFPA]
Climb Gradient:	500.0 ft/NM up to 1117.0 ft MSL 200.0 ft/NM
Speeds:	130 at the Runway DER
	145 at the end of the VA or VI leg
	200 Ground Speed to 11000 FT
	240 Ground Speed to 18000 FT
	260 Ground Speed to 24000 FT
	340 Ground Speed above 24000 FT
Descent During a Turn:	Allowed
VNAV Mode:	Flight Plan

DME DME Assessment Results for ROTRY6 path KSTL:RW12R:DER_FUNKE

DME/DME	
RNP:	RNP 2
Flight Mode:	Manual
Line of Sight (DTED Level 0 Max):	Evaluated
Inertial Drift:	Enabled
Initial Drift:	0.558 NM
INS Drift Rate:	8.0 NM/Hour
Range Mode:	OSV
RNP Edges:	Evaluated
Min DME Range:	3.0 NM
DME Types:	DME, VOR-DME, VORTAC, TACAN
DME Include Angles:	30 to 150
Critical DMEs:	Allowed
DoD Facilities:	Not included
Foreign Facilities:	Not included
High DMEs:	Included
Low DMEs:	Included
Terminal DMEs:	Included
Flight Check DMEs:	Not selected
Higher Altitudes:	Not Evaluated
Near Maximum Altitude:	Not Evaluated
Automatic ESVs:	Not enabled
Disabled DMEs:	None

DME/DME (Continued)										
DMEs Used										
#	Name	Lat/Lon	MAGVAR	Range	Type	Source	Critical	Status	Time	Distance
1	CSX	N38° 45' 09.8799", W090° 21' 39.4546"	0.0 E	130	DL		NO	Enabled	8.1 %	8.5 %
2	STL	N38° 51' 38.6039", W090° 28' 56.4560"	1.0 E	130	H		NO	Enabled	39.9 %	48.3 %
3	FTZ	N38° 41' 39.6013", W090° 58' 16.5696"	5.0 E	40	L		NO	Enabled	39.9 %	48.3 %
4	TOY	N38° 44' 20.9386", W089° 55' 06.9333"	4.0 E	40	L		NO	Enabled	8.1 %	8.5 %

Flight Check DME Selection						
Distance [NM]	Selected DMEs					Alternate
0.0						
2.1	TOY	CSX				
2.2	STL	FTZ	CSX	TOY		
2.5	STL	FTZ				

Inertial Drift Segments			
#	Start Location	End Location	Length [NM]
1	N38° 44' 14.8798", W090° 20' 44.9722"	N38° 43' 41.0932", W090° 18' 18.4086"	2.068

Available DMEs by Waypoints			
Waypoint Before	Waypoint After	DME List	Suggested DMEs
KSTL:RW12R:DER	FUNKE	CSX, STL, FTZ, TOY	

DME DME Assessment Results for ROTRY6 path KSTL:RW12R:DER_FUNKE

User Data Files

File Name

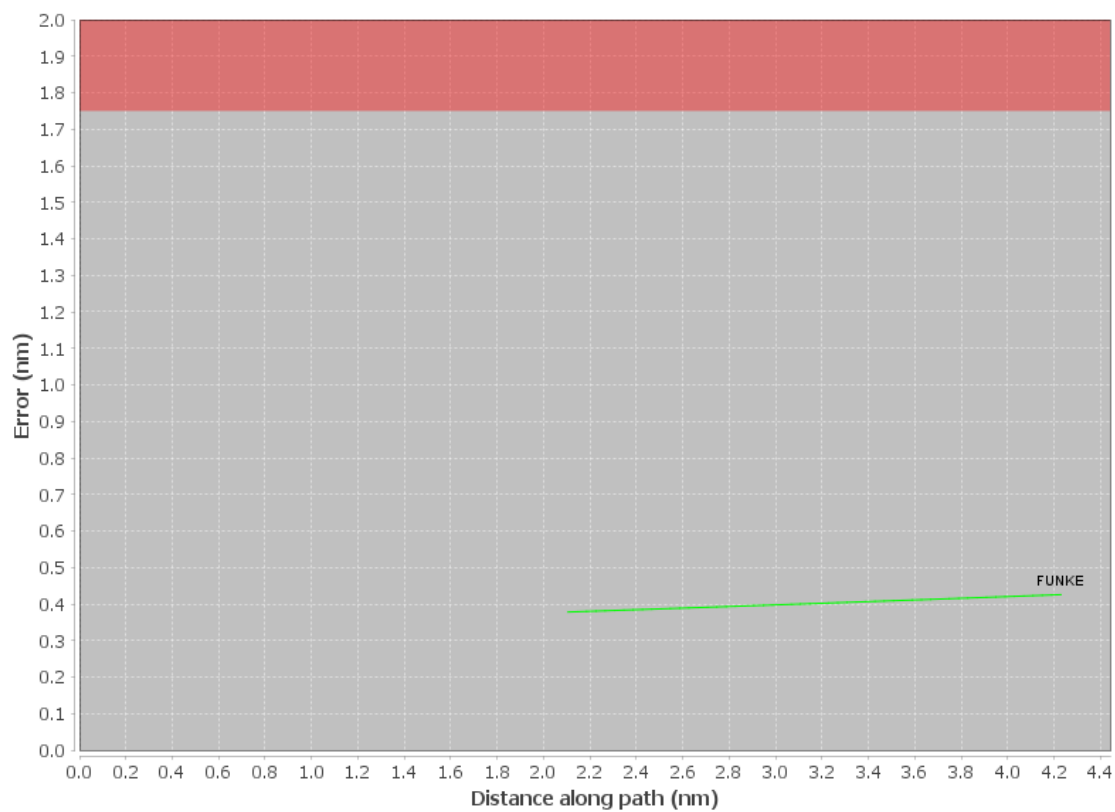
None

User DMEs

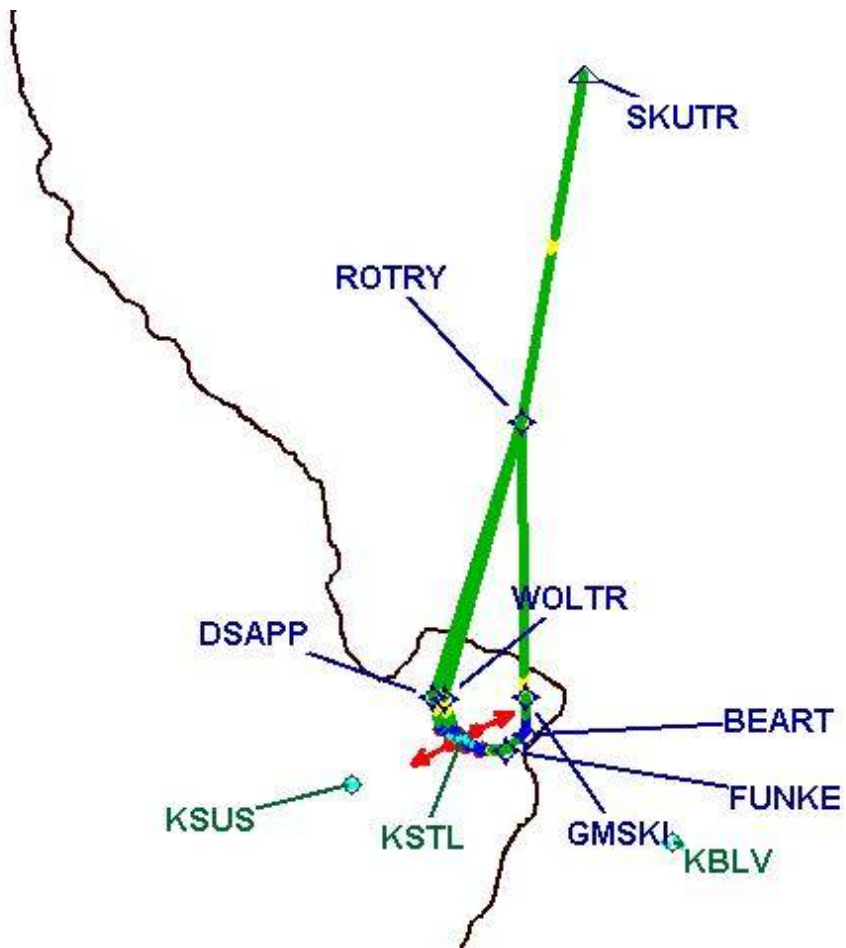
#	Name	Lat/Lon	MAGVAR	Range	Elevation [ft]	Frequency	Replaces	Status
1	UIN FAA 861428-30 UIN	N39° 50' 52.3489", W091° 16' 44.1281"	5.0 E	130	715.1	null	UIN FAA 861428-30	
ESV:		Bearing [True]: 132.0° to 147.0° Bearing [Mag]: 127.0° to 142.0°				Arc Distance: Out to 76.0 NM Altitude: 4000.0 to 15300.0 ft		
2	UIN FAA 861428-24 UIN	N39° 50' 52.3489", W091° 16' 44.1281"	5.0 E	130	715.1	null	UIN FAA 861428-24	
ESV:		Bearing [True]: 75.0° to 125.0° Bearing [Mag]: 70.0° to 120.0°				Arc Distance: Out to 60.0 NM Altitude: 4000.0 to 14500.0 ft		
3	TOY FAA 704225-4 TOY	N38° 44' 20.9386", W089° 55' 06.9333"	4.0 E	40	576.2	116.0	TOY FAA 704225-4	
ESV:		Bearing [True]: 274.0° to 347.0° Bearing [Mag]: 270.0° to 343.0°				Arc Distance: Out to 65.0 NM Altitude: 5000.0 to 20000.0 ft		

DME DME Assessment Results for ROTRY6 path KSTL:RW12R:DER_FUNKE

DME Error

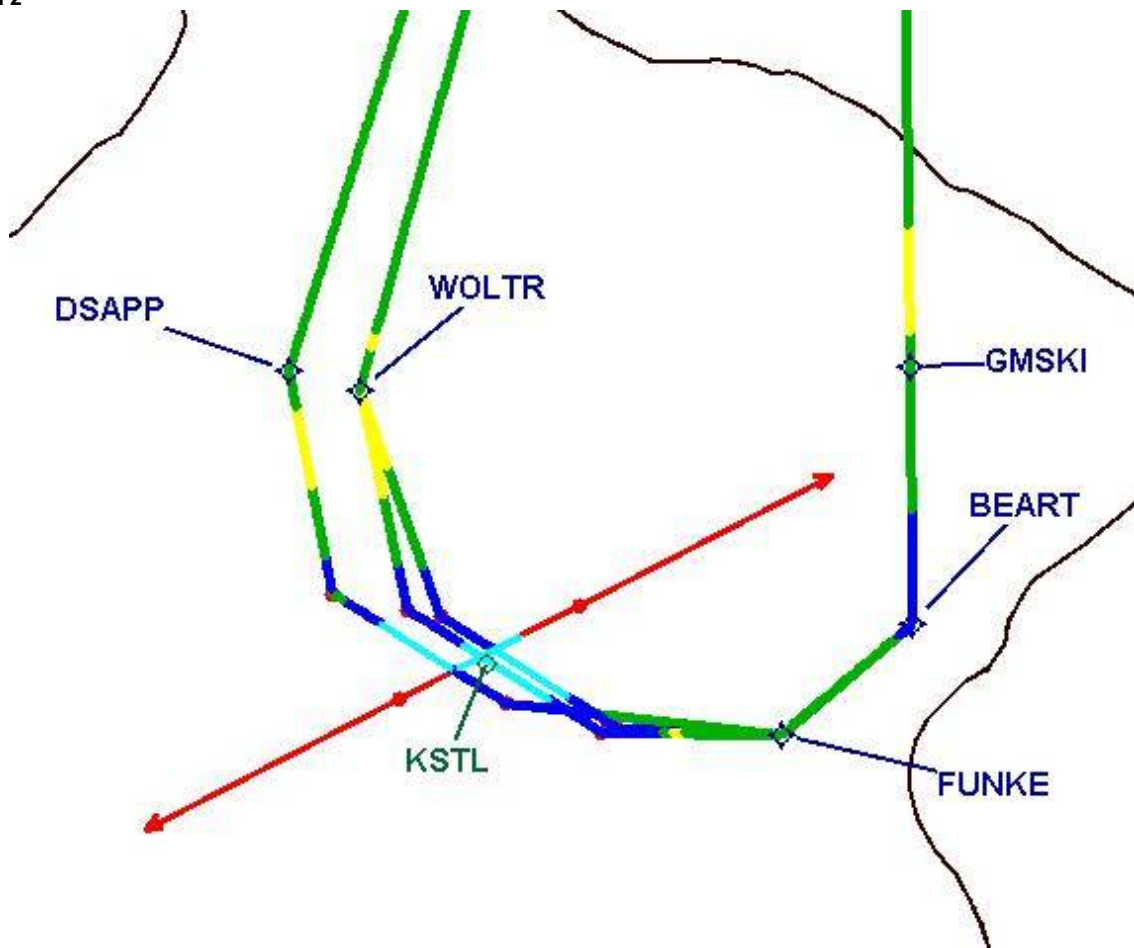


Graphic Depiction 1

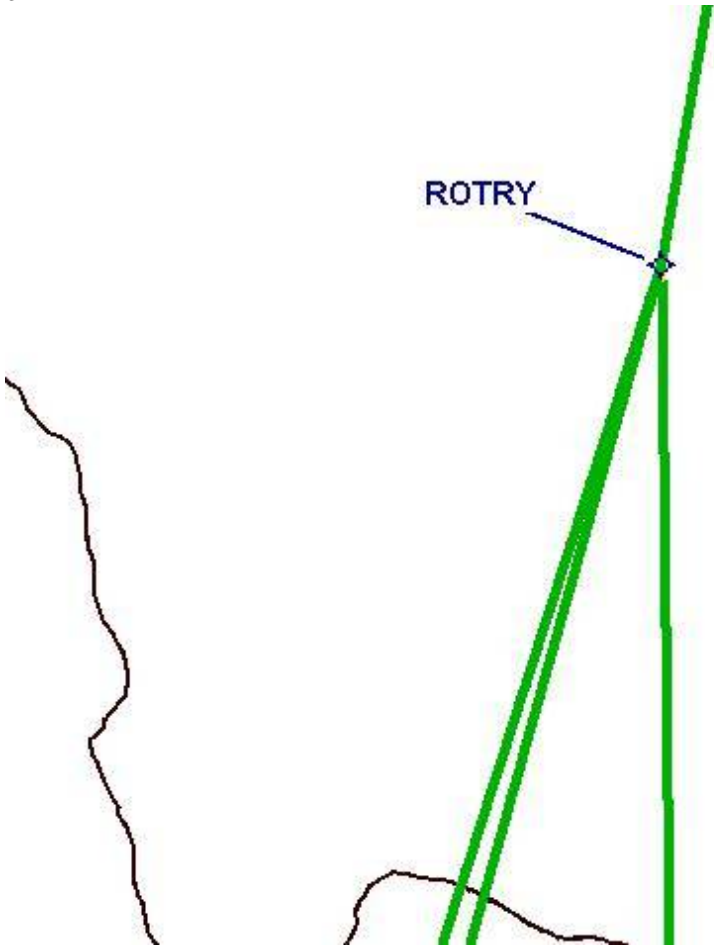


DME DME Assessment Results for ROTRY6 path KSTL:RW12R:DER_FUNKE

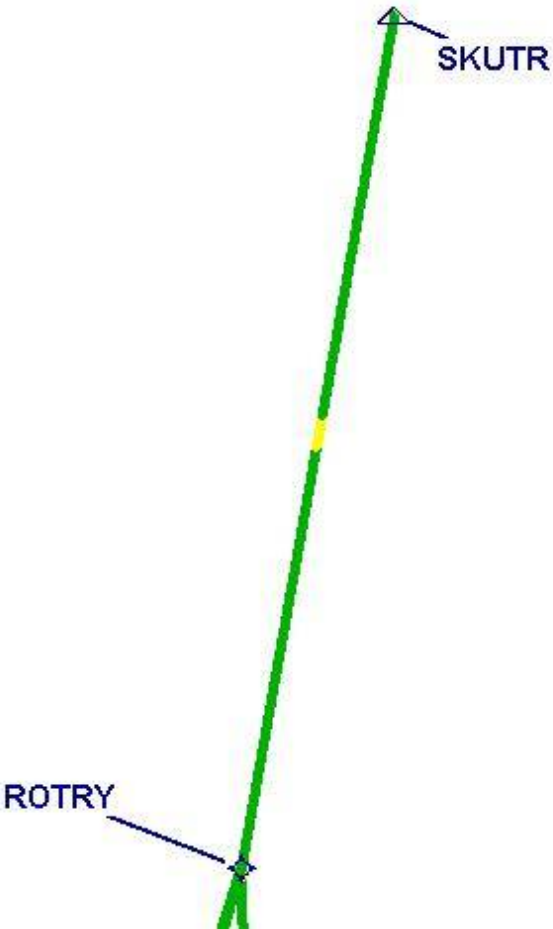
Graphic Depiction 2



Graphic Depiction 3



Graphic Depiction 4



DME DME Assessment Results for ROTRY6 path KSTL:RW29:DER_ROTTRY

Results Summary

Flyability:	Completed
DME/DME:	Completed - No Critical DMEs
Name:	Lisa A-CTR Thrysoe
Project File:	C:\Users\Lisa A-CTR Thrysoe\OneDrive - Federal Aviation Administration\Desktop\DME DME Screening\KSTL\ROTRY 6 (RNAV) SID DME 20241125.tgs
Output File:	C:\Users\Lisa A-CTR Thrysoe\OneDrive - Federal Aviation Administration\Desktop\DME DME Screening\KSTL\KSTL [IFPA] ROTRY6 20241127_1159 EST\KSTL-RW29-DER_ROTTRY\KSTL ROTRY6 SID RW29 ROTRY 20241127_1159 EST.pdf
Procedure Name:	ROTRY6
Software: DmeDmePlugin:	7.4.1
Date/Time:	11/27/2024 11:59 EST
Databases:	MITRE 3DEP 3 arcsec

Failures

No Failures

Warnings

No Warnings

Informational

No Informational

Notes For Flight Check

None

Flight Plan

Name	Type	Lat/Lon	Altitude (ft)	VNAV Mode	Ground Speed (kts)	Turn Type	Leg Type
KSTL:RW29:DER	WP	N38° 45' 35.8282", W090° 24' 35.5403"	616.8	VNAV	130	FLY_OVER	TF
DSAPP	WP	N38° 50' 01.0600", W090° 26' 38.9800"	2500	VNAV	240	FLY_BY	TF
ROTRY	WP	N39° 22' 37.6900", W090° 13' 11.8800"	5000	VNAV	200	FLY_BY	TF
Climb Gradient: 500.0 ft/NM up to 1117.0 ft MSL 200.0 ft/NM							

Flyability

Flight Type:	SID
Selected Airport:	KSTL [IFPA]
Climb Gradient:	500.0 ft/NM up to 1117.0 ft MSL 200.0 ft/NM
Speeds:	130 at the Runway DER
	145 at the end of the VA or VI leg
	200 Ground Speed to 11000 FT
	240 Ground Speed to 18000 FT
	260 Ground Speed to 24000 FT
	340 Ground Speed above 24000 FT
Descent During a Turn:	Allowed
VNAV Mode:	Flight Plan

DME DME Assessment Results for ROTRY6 path KSTL:RW29:DER_ROTTRY

DME/DME	
RNP:	RNP 2
Flight Mode:	Manual
Line of Sight (DTED Level 0 Max):	Evaluated
Inertial Drift:	Enabled
Initial Drift:	0.558 NM
INS Drift Rate:	8.0 NM/Hour
Range Mode:	OSV
RNP Edges:	Evaluated
Min DME Range:	3.0 NM
DME Types:	DME, VOR-DME, VORTAC, TACAN
DME Include Angles:	30 to 150
Critical DMEs:	Allowed
DoD Facilities:	Not included
Foreign Facilities:	Not included
High DMEs:	Included
Low DMEs:	Included
Terminal DMEs:	Included
Flight Check DMEs:	Not selected
Higher Altitudes:	Not Evaluated
Near Maximum Altitude:	Not Evaluated
Automatic ESVs:	Not enabled
Disabled DMEs:	None

DME/DME (Continued)										
DMEs Used										
#	Name	Lat/Lon	MAGVAR	Range	Type	Source	Critical	Status	Time	Distance
1	CSX	N38° 45' 09.8799", W090° 21' 39.4546"	0.0 E	130	DL		NO	Enabled	83.1 %	85.9 %
2	STL	N38° 51' 38.6039", W090° 28' 56.4560"	1.0 E	130	H		NO	Enabled	83.2 %	84.8 %
3	UIN	N39° 50' 52.3489", W091° 16' 44.1281"	5.0 E	130	H		NO	Enabled	7.5 %	7.8 %
4	FTZ	N38° 41' 39.6013", W090° 58' 16.5696"	5.0 E	40	L		NO	Enabled	48.4 %	48.8 %
5	SPI	N39° 50' 23.0394", W089° 40' 39.8488"	1.0 W	130	H		NO	Enabled	2.1 %	2.2 %
6	TOY	N38° 44' 20.9386", W089° 55' 06.9333"	4.0 E	40	L		NO	Enabled	85 %	88.4 %

Flight Check DME Selection						
Distance [NM]	Selected DMEs					Alternate
0.0						
0.7	STL	CSX				
1.0						
1.6	STL	FTZ				
2.9	STL	FTZ	CSX	TOY		
4.3	FTZ	CSX				
5.9	FTZ	CSX	TOY			
8.9	FTZ	CSX	STL	TOY		
20.8	STL	TOY	UIN	CSX		
23.9	STL	TOY	CSX			
36.3	TOY	STL				
38.3	TOY	SPI	STL			

DME DME Assessment Results for ROTRY6 path KSTL:RW29:DER_ROTTRY

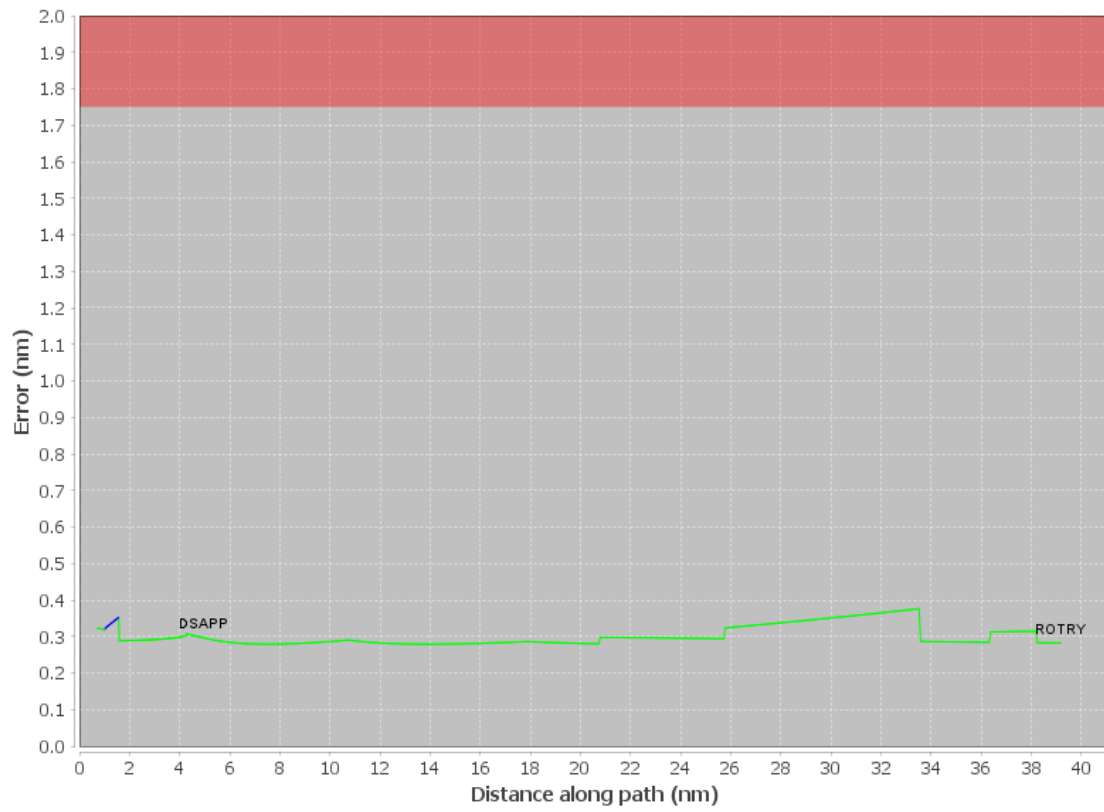
Inertial Drift Segments			
#	Start Location	End Location	Length [NM]
1	N38° 45' 36.9707", W090° 24' 37.8600"	N38° 45' 58.6754", W090° 25' 21.9390"	0.6788
2	N38° 46' 07.8129", W090° 25' 40.5008"	N38° 46' 43.1541", W090° 25' 49.3545"	0.5997

Available DMEs by Waypoints			
Waypoint Before	Waypoint After	DME List	Suggested DMEs
KSTL:RW29:DER	DSAPP	CSX, STL, FTZ, TOY	
DSAPP	ROTRY	CSX, STL, UIN, FTZ, SPI, TOY	

User Data Files								
#	File Name							
None								
User DMEs								
#	Name	Lat/Lon	MAGVAR	Range	Elevation [ft]	Frequency	Replaces	Status
1	UIN FAA 861428-30 UIN	N39° 50' 52.3489", W091° 16' 44.1281"	5.0 E	130	715.1	null	UIN FAA 861428-30	
ESV:		Bearing [True]: 132.0° to 147.0° Bearing [Mag]: 127.0° to 142.0°				Arc Distance: Out to 76.0 NM Altitude: 4000.0 to 15300.0 ft		
2	UIN FAA 861428-24 UIN	N39° 50' 52.3489", W091° 16' 44.1281"	5.0 E	130	715.1	null	UIN FAA 861428-24	
ESV:		Bearing [True]: 75.0° to 125.0° Bearing [Mag]: 70.0° to 120.0°				Arc Distance: Out to 60.0 NM Altitude: 4000.0 to 14500.0 ft		
3	TOY FAA 704225-4 TOY	N38° 44' 20.9386", W089° 55' 06.9333"	4.0 E	40	576.2	116.0	TOY FAA 704225-4	
ESV:		Bearing [True]: 274.0° to 347.0° Bearing [Mag]: 270.0° to 343.0°				Arc Distance: Out to 65.0 NM Altitude: 5000.0 to 20000.0 ft		

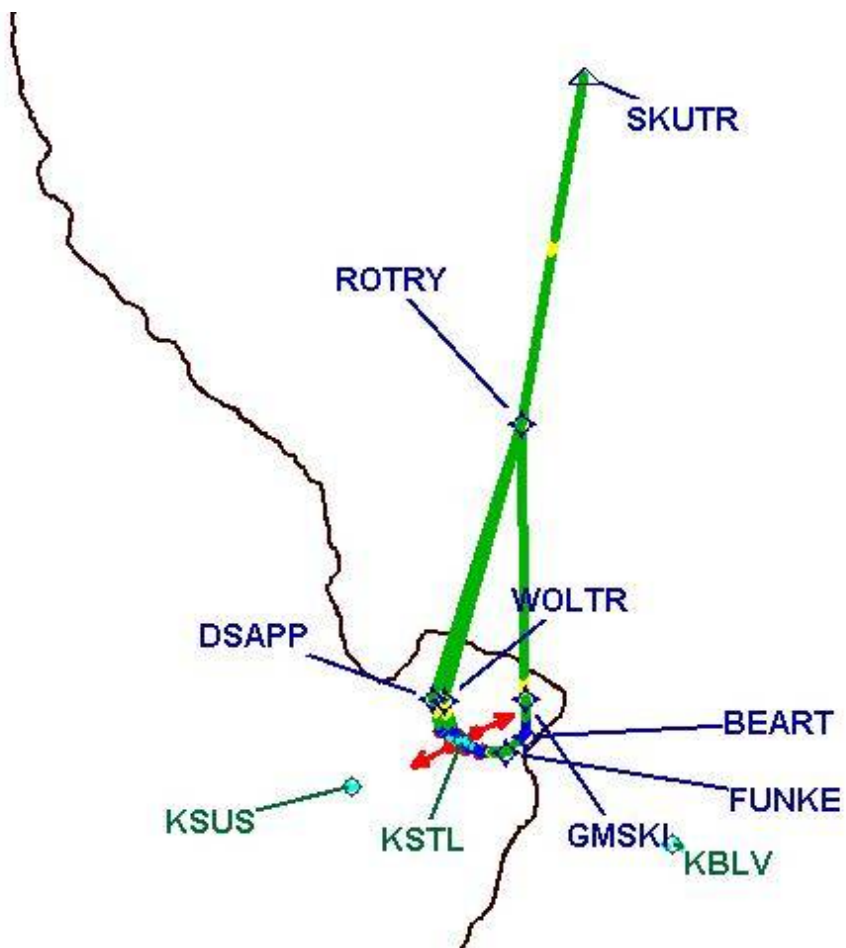
DME DME Assessment Results for ROTRY6 path KSTL:RW29:DER_ROTARY

DME Error



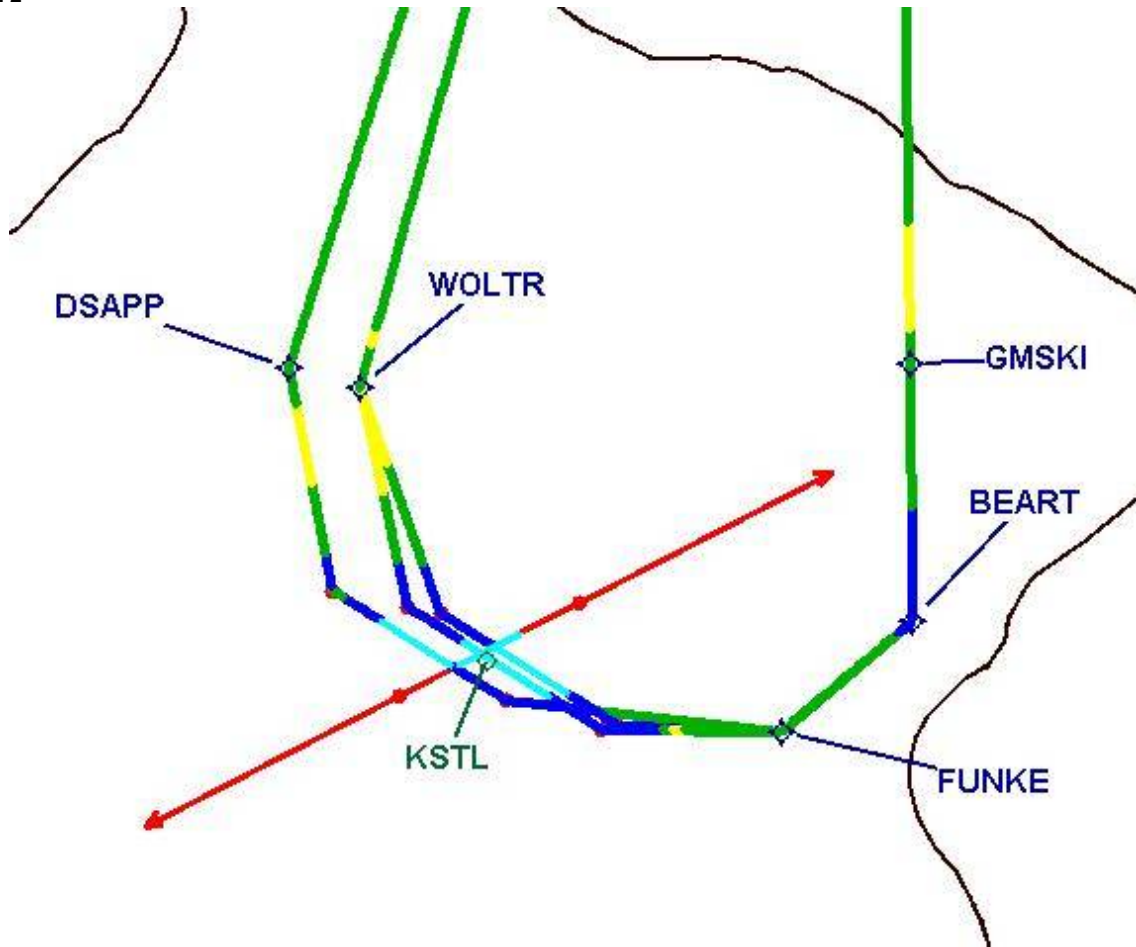
DME DME Assessment Results for ROTRY6 path KSTL:RW29:DER_ROTTRY

Graphic Depiction 1

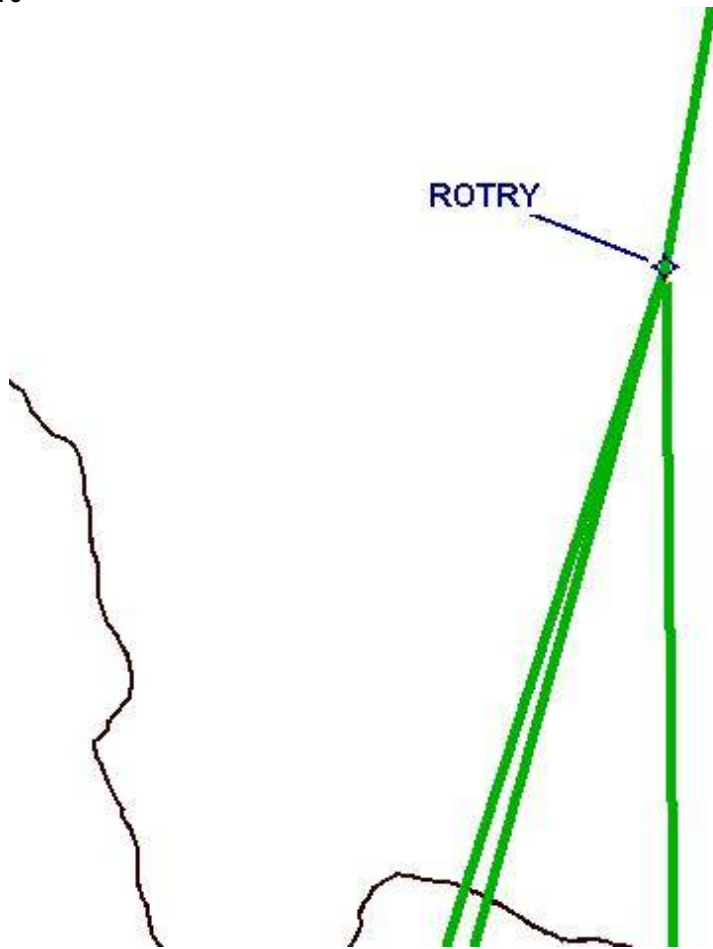


DME DME Assessment Results for ROTRY6 path KSTL:RW29:DER_ROTARY

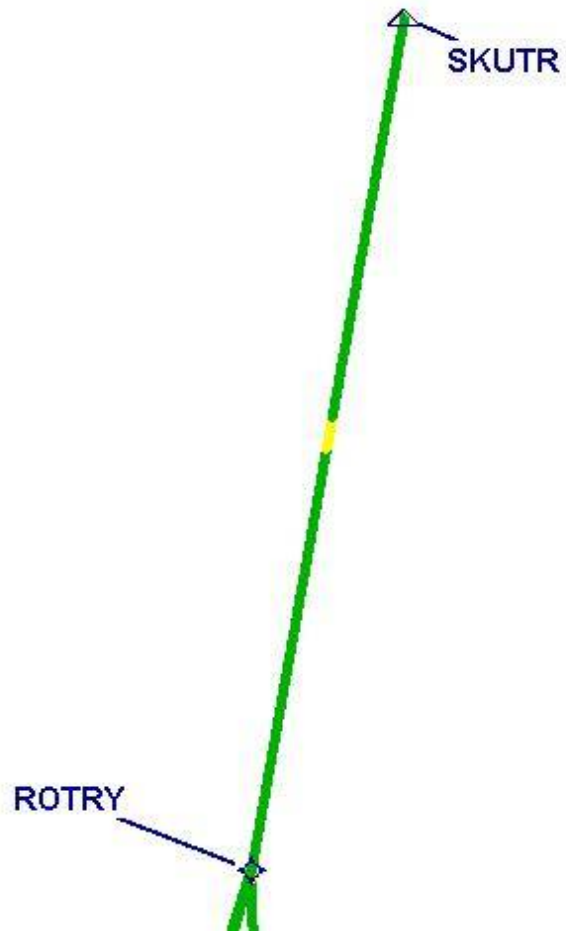
Graphic Depiction 2



Graphic Depiction 3



Graphic Depiction 4



DME DME Assessment Results for ROTRY6 path KSTL:RW30L:DER_ROTROY

Results Summary

Flyability:	Completed
DME/DME:	Completed - No Critical DMEs
Name:	Lisa A-CTR Thrysoe
Project File:	C:\Users\Lisa A-CTR Thrysoe\OneDrive - Federal Aviation Administration\Desktop\DME DME Screening\KSTL\ROTRY 6 (RNAV) SID DME 20241125.tgs
Output File:	C:\Users\Lisa A-CTR Thrysoe\OneDrive - Federal Aviation Administration\Desktop\DME DME Screening\KSTL\KSTL [IFPA] ROTRY6 20241127_1159 EST\KSTL-RW30L- DER_ROTROY\KSTL ROTRY6 SID RW30L ROTRY 20241127_1159 EST.pdf
Procedure Name:	ROTRY6
Software: DmeDmePlugin:	7.4.1
Date/Time:	11/27/2024 11:59 EST
Databases:	MITRE 3DEP 3 arcsec

Failures

No Failures

Warnings

No Warnings

Informational

No Informational

Notes For Flight Check

None

Flight Plan

Name	Type	Lat/Lon	Altitude (ft)	VNAV Mode	Ground Speed (kts)	Turn Type	Leg Type
KSTL:RW30L:DER	WP	N38° 45' 14.0539", W090° 22' 44.9719"	541.3	VNAV	130	FLY_OVER	TF
WOLTR	WP	N38° 49' 41.3200", W090° 25' 03.0200"	2500	VNAV	240	FLY_BY	TF
ROTRY	WP	N39° 22' 37.6900", W090° 13' 11.8800"	5000	VNAV	200	FLY_BY	TF
Climb Gradient: 500.0 ft/NM up to 1117.0 ft MSL 200.0 ft/NM							

Flyability

Flight Type:	SID
Selected Airport:	KSTL [IFPA]
Climb Gradient:	500.0 ft/NM up to 1117.0 ft MSL 200.0 ft/NM
Speeds:	130 at the Runway DER
	145 at the end of the VA or VI leg
	200 Ground Speed to 11000 FT
	240 Ground Speed to 18000 FT
	260 Ground Speed to 24000 FT
	340 Ground Speed above 24000 FT
Descent During a Turn:	Allowed
VNAV Mode:	Flight Plan

DME DME Assessment Results for ROTRY6 path KSTL:RW30L:DER_ROTTRY

DME/DME	
RNP:	RNP 2
Flight Mode:	Manual
Line of Sight (DTED Level 0 Max):	Evaluated
Inertial Drift:	Enabled
Initial Drift:	0.558 NM
INS Drift Rate:	8.0 NM/Hour
Range Mode:	OSV
RNP Edges:	Evaluated
Min DME Range:	3.0 NM
DME Types:	DME, VOR-DME, VORTAC, TACAN
DME Include Angles:	30 to 150
Critical DMEs:	Allowed
DoD Facilities:	Not included
Foreign Facilities:	Not included
High DMEs:	Included
Low DMEs:	Included
Terminal DMEs:	Included
Flight Check DMEs:	Not selected
Higher Altitudes:	Not Evaluated
Near Maximum Altitude:	Not Evaluated
Automatic ESVs:	Not enabled
Disabled DMEs:	None

DME/DME (Continued)										
DMEs Used										
#	Name	Lat/Lon	MAGVAR	Range	Type	Source	Critical	Status	Time	Distance
1	CSX	N38° 45' 09.8799", W090° 21' 39.4546"	0.0 E	130	DL		NO	Enabled	81.5 %	85.1 %
2	STL	N38° 51' 38.6039", W090° 28' 56.4560"	1.0 E	130	H		NO	Enabled	82.7 %	85.3 %
3	UIN	N39° 50' 52.3489", W091° 16' 44.1281"	5.0 E	130	H		NO	Enabled	8.1 %	8.5 %
4	FTZ	N38° 41' 39.6013", W090° 58' 16.5696"	5.0 E	40	L		NO	Enabled	45.7 %	46.3 %
5	SPI	N39° 50' 23.0394", W089° 40' 39.8488"	1.0 W	130	H		NO	Enabled	1.8 %	1.9 %
6	TOY	N38° 44' 20.9386", W089° 55' 06.9333"	4.0 E	40	L		NO	Enabled	86 %	89.8 %

Flight Check DME Selection						
Distance [NM]	Selected DMEs					Alternate
0.0						
1.9	STL	FTZ				
3.2	FTZ	CSX	STL	TOY		
5.0	FTZ	CSX				
5.8	FTZ	CSX	TOY	STL		
6.1	FTZ	CSX	TOY			
9.1	FTZ	CSX	STL	TOY		
20.2	STL	TOY	UIN	CSX		
23.6	STL	TOY	CSX			
36.7	TOY	STL				
38.5	TOY	SPI	STL			

Inertial Drift Segments			
#	Start Location	End Location	Length [NM]
1	N38° 45' 15.2050", W090° 22' 47.3074"	N38° 46' 35.5613", W090° 24' 11.9820"	1.8742

DME DME Assessment Results for ROTRY6 path KSTL:RW30L:DER_ROTTRY

Available DMEs by Waypoints

Waypoint Before	Waypoint After	DME List	Suggested DMEs
KSTL:RW30L:DER	WOLTR	CSX, STL, FTZ, TOY	
WOLTR	ROTRY	CSX, STL, UIN, FTZ, SPI, TOY	

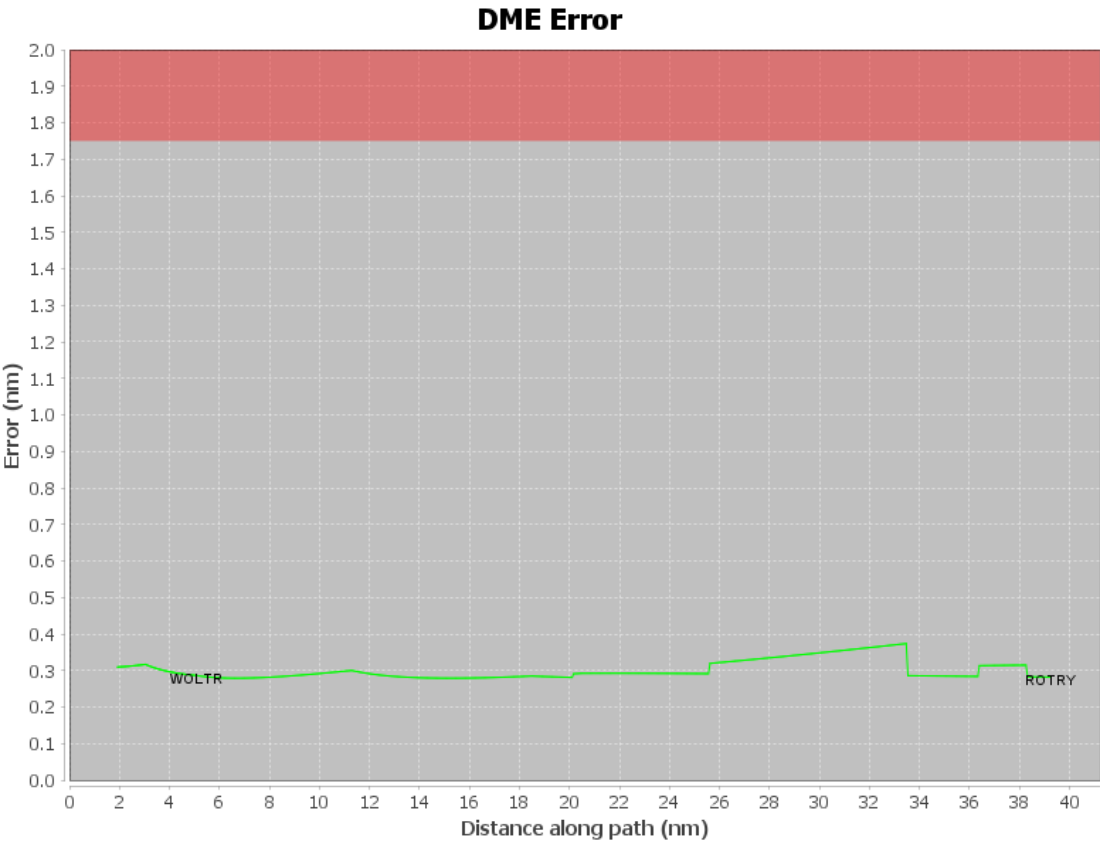
User Data Files

File Name

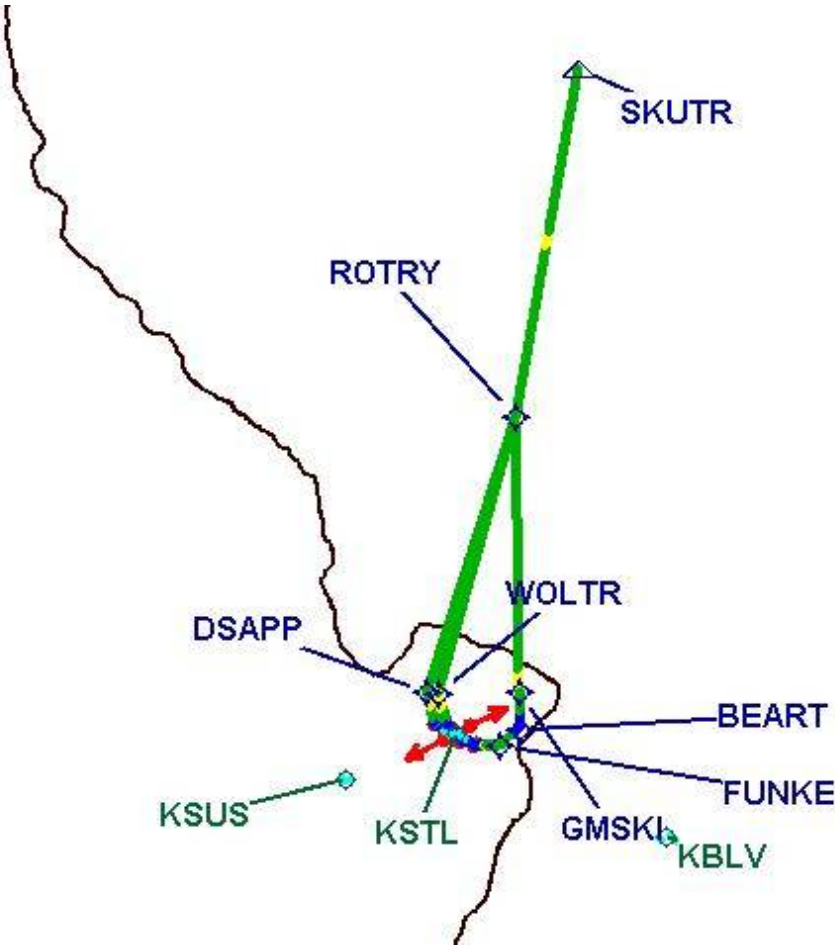
None

User DMEs

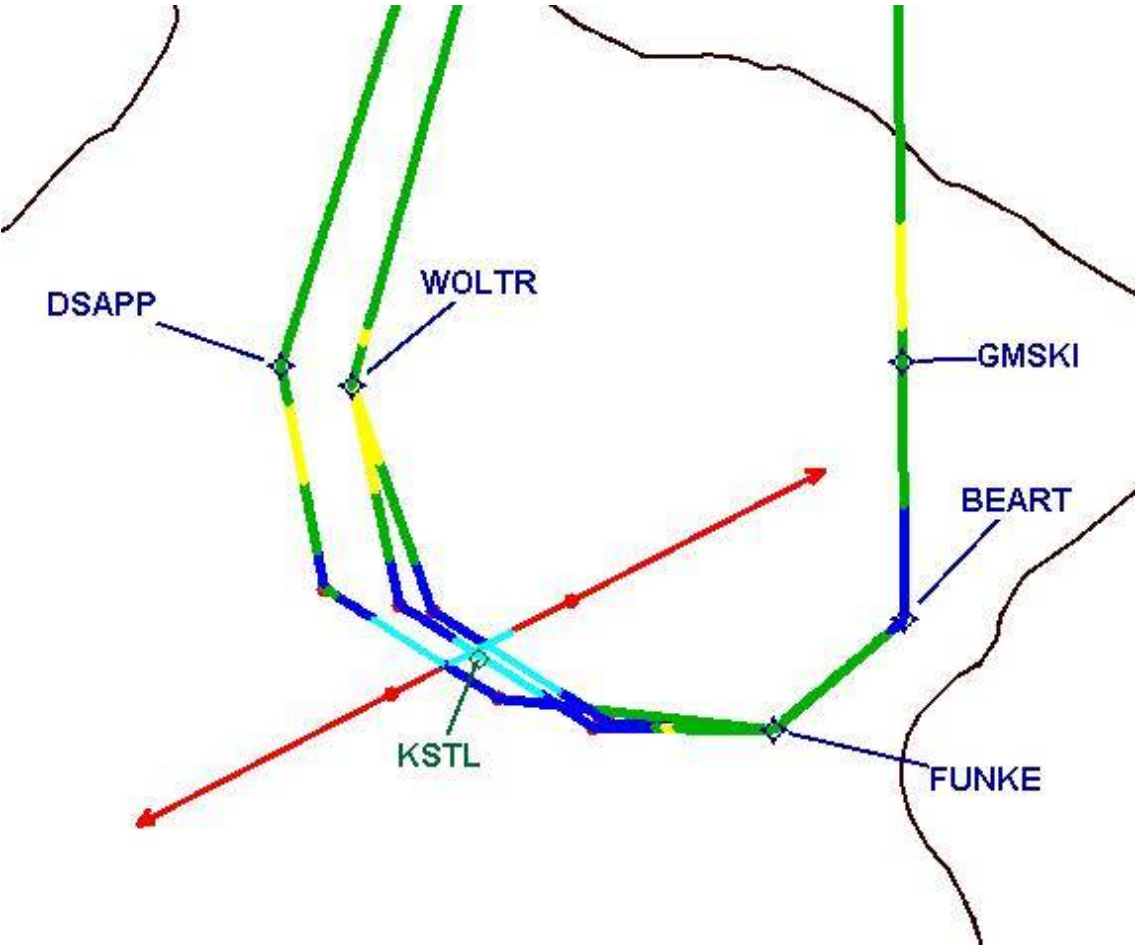
#	Name	Lat/Lon	MAGVAR	Range	Elevation [ft]	Frequency	Replaces	Status
1	UIN FAA 861428-30 UIN	N39° 50' 52.3489", W091° 16' 44.1281"	5.0 E	130	715.1	null	UIN FAA 861428-30	
ESV:		Bearing [True]: 132.0° to 147.0° Bearing [Mag]: 127.0° to 142.0°				Arc Distance: Out to 76.0 NM Altitude: 4000.0 to 15300.0 ft		
2	UIN FAA 861428-24 UIN	N39° 50' 52.3489", W091° 16' 44.1281"	5.0 E	130	715.1	null	UIN FAA 861428-24	
ESV:		Bearing [True]: 75.0° to 125.0° Bearing [Mag]: 70.0° to 120.0°				Arc Distance: Out to 60.0 NM Altitude: 4000.0 to 14500.0 ft		
3	TOY FAA 704225-4 TOY	N38° 44' 20.9386", W089° 55' 06.9333"	4.0 E	40	576.2	116.0	TOY FAA 704225-4	
ESV:		Bearing [True]: 274.0° to 347.0° Bearing [Mag]: 270.0° to 343.0°				Arc Distance: Out to 65.0 NM Altitude: 5000.0 to 20000.0 ft		



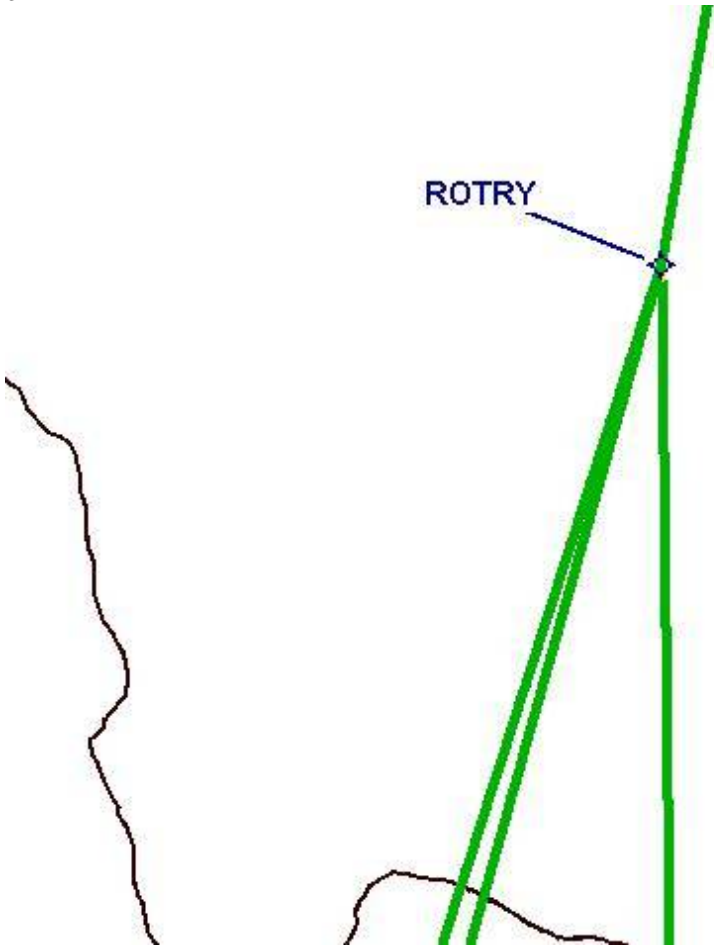
Graphic Depiction 1



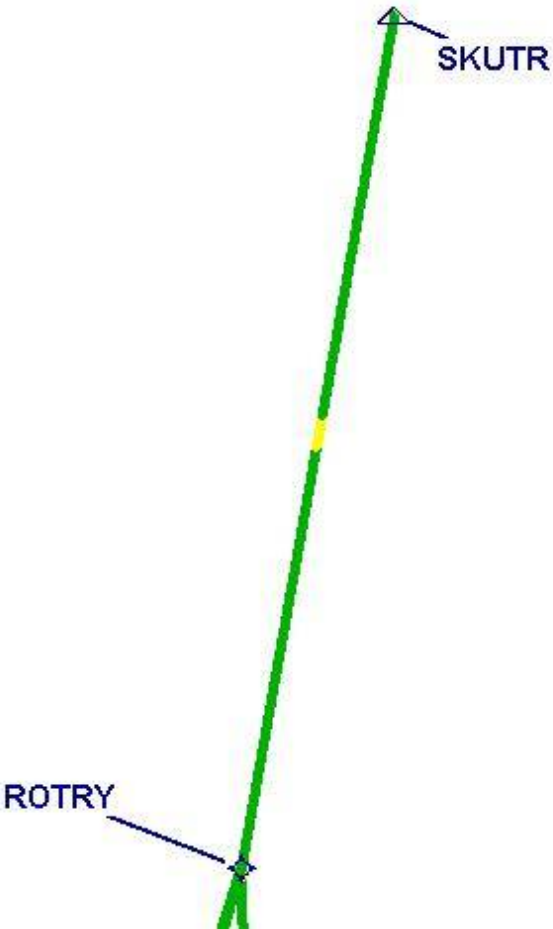
Graphic Depiction 2



Graphic Depiction 3



Graphic Depiction 4



DME DME Assessment Results for ROTRY6 path KSTL:RW30R:DER_WOLTR

Results Summary

Flyability:	Completed
DME/DME:	Completed - No Critical DMEs
Name:	Lisa A-CTR Thrysoe
Project File:	C:\Users\Lisa A-CTR Thrysoe\OneDrive - Federal Aviation Administration\Desktop\DME DME Screening\KSTL\ROTRY 6 (RNAV) SID DME 20241125.tgs
Output File:	C:\Users\Lisa A-CTR Thrysoe\OneDrive - Federal Aviation Administration\Desktop\DME DME Screening\KSTL\KSTL [IFPA] ROTRY6 20241127_1159 EST\KSTL-RW30R- DER_WOLTR\KSTL ROTRY6 SID RW30R WOLTR 20241127_1159 EST.pdf
Procedure Name:	ROTRY6
Software: DmeDmePlugin:	7.4.1
Date/Time:	11/27/2024 11:59 EST
Databases:	MITRE 3DEP 3 arcsec

Failures

No Failures

Warnings

No Warnings

Informational

No Informational

Notes For Flight Check

None

Flight Plan

Name	Type	Lat/Lon	Altitude (ft)	VNAV Mode	Ground Speed (kts)	Turn Type	Leg Type
KSTL:RW30R:DER	WP	N38° 45' 06.4559", W090° 21' 58.7582"	527.7	VNAV	130	FLY_OVER	TF
WOLTR	WP	N38° 49' 41.3200", W090° 25' 03.0200"	2500	VNAV	240	FLY_BY	TF
Climb Gradient: 500.0 ft/NM up to 1117.0 ft MSL 200.0 ft/NM							

Flyability

Flight Type:	SID
Selected Airport:	KSTL [IFPA]
Climb Gradient:	500.0 ft/NM up to 1117.0 ft MSL 200.0 ft/NM
Speeds:	130 at the Runway DER
	145 at the end of the VA or VI leg
	200 Ground Speed to 11000 FT
	240 Ground Speed to 18000 FT
	260 Ground Speed to 24000 FT
	340 Ground Speed above 24000 FT
Descent During a Turn:	Allowed
VNAV Mode:	Flight Plan

DME DME Assessment Results for ROTRY6 path KSTL:RW30R:DER_WOLTR

DME/DME	
RNP:	RNP 2
Flight Mode:	Manual
Line of Sight (DTED Level 0 Max):	Evaluated
Inertial Drift:	Enabled
Initial Drift:	0.558 NM
INS Drift Rate:	8.0 NM/Hour
Range Mode:	OSV
RNP Edges:	Evaluated
Min DME Range:	3.0 NM
DME Types:	DME, VOR-DME, VORTAC, TACAN
DME Include Angles:	30 to 150
Critical DMEs:	Allowed
DoD Facilities:	Not included
Foreign Facilities:	Not included
High DMEs:	Included
Low DMEs:	Included
Terminal DMEs:	Included
Flight Check DMEs:	Not selected
Higher Altitudes:	Not Evaluated
Near Maximum Altitude:	Not Evaluated
Automatic ESVs:	Not enabled
Disabled DMEs:	None

DME/DME (Continued)										
DMEs Used										
#	Name	Lat/Lon	MAGVAR	Range	Type	Source	Critical	Status	Time	Distance
1	CSX	N38° 45' 09.8799", W090° 21' 39.4546"	0.0 E	130	DL		NO	Enabled	20.8 %	26.8 %
2	STL	N38° 51' 38.6039", W090° 28' 56.4560"	1.0 E	130	H		NO	Enabled	53.4 %	61.7 %
3	FTZ	N38° 41' 39.6013", W090° 58' 16.5696"	5.0 E	40	L		NO	Enabled	53.4 %	61.7 %
4	TOY	N38° 44' 20.9386", W089° 55' 06.9333"	4.0 E	40	L		NO	Enabled	20.8 %	26.8 %

Flight Check DME Selection						
Distance [NM]	Selected DMEs					Alternate
0.0						
2.1	STL	FTZ				
3.9	FTZ	CSX	STL	TOY		

Inertial Drift Segments			
#	Start Location	End Location	Length [NM]
1	N38° 45' 07.5987", W090° 22' 01.0763"	N38° 46' 33.8532", W090° 23' 37.8256"	2.0189

Available DMEs by Waypoints			
Waypoint Before	Waypoint After	DME List	Suggested DMEs
KSTL:RW30R:DER	WOLTR	CSX, STL, FTZ, TOY	

DME DME Assessment Results for ROTRY6 path KSTL:RW30R:DER_WOLTR

User Data Files

File Name

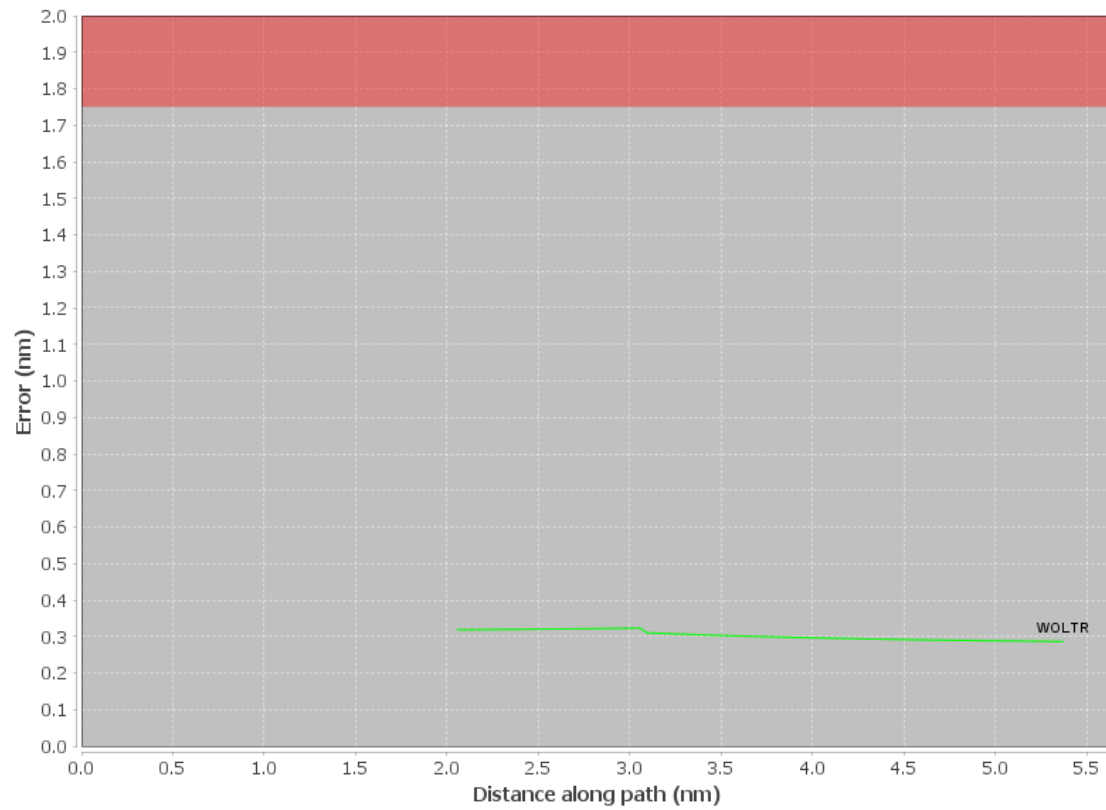
None

User DMEs

#	Name	Lat/Lon	MAGVAR	Range	Elevation [ft]	Frequency	Replaces	Status
1	UIN FAA 861428-30 UIN	N39° 50' 52.3489", W091° 16' 44.1281"	5.0 E	130	715.1	null	UIN FAA 861428-30	
ESV:		Bearing [True]: 132.0° to 147.0° Bearing [Mag]: 127.0° to 142.0°				Arc Distance: Out to 76.0 NM Altitude: 4000.0 to 15300.0 ft		
2	UIN FAA 861428-24 UIN	N39° 50' 52.3489", W091° 16' 44.1281"	5.0 E	130	715.1	null	UIN FAA 861428-24	
ESV:		Bearing [True]: 75.0° to 125.0° Bearing [Mag]: 70.0° to 120.0°				Arc Distance: Out to 60.0 NM Altitude: 4000.0 to 14500.0 ft		
3	TOY FAA 704225-4 TOY	N38° 44' 20.9386", W089° 55' 06.9333"	4.0 E	40	576.2	116.0	TOY FAA 704225-4	
ESV:		Bearing [True]: 274.0° to 347.0° Bearing [Mag]: 270.0° to 343.0°				Arc Distance: Out to 65.0 NM Altitude: 5000.0 to 20000.0 ft		

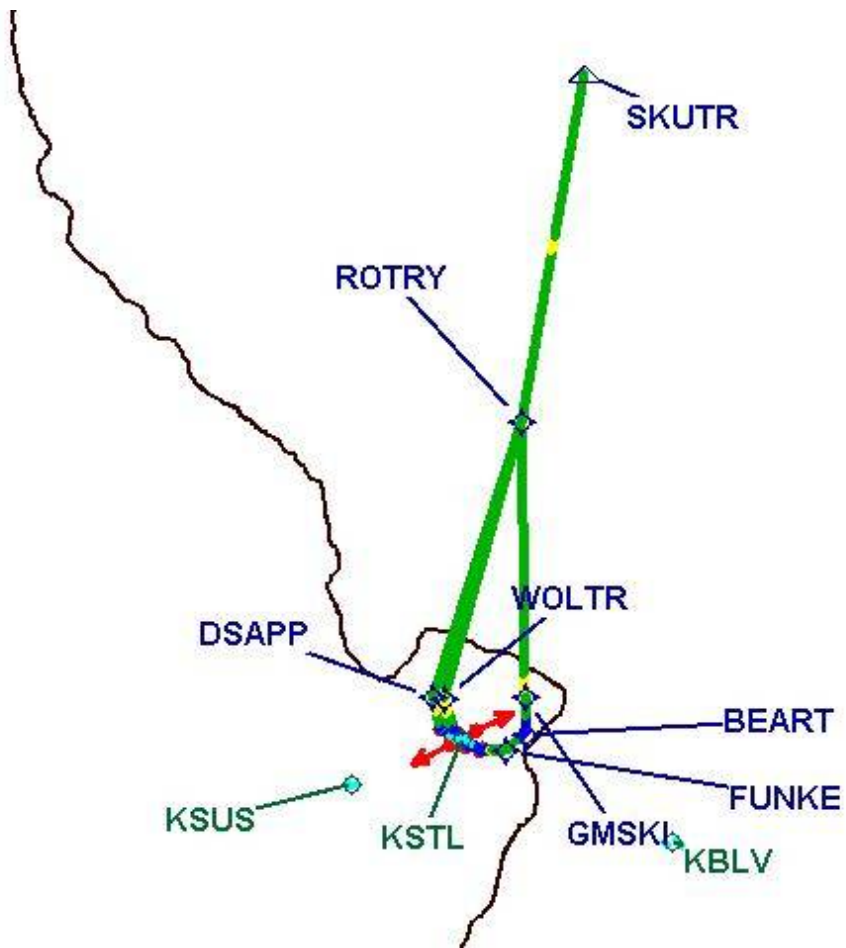
DME DME Assessment Results for ROTRY6 path KSTL:RW30R:DER_WOLTR

DME Error

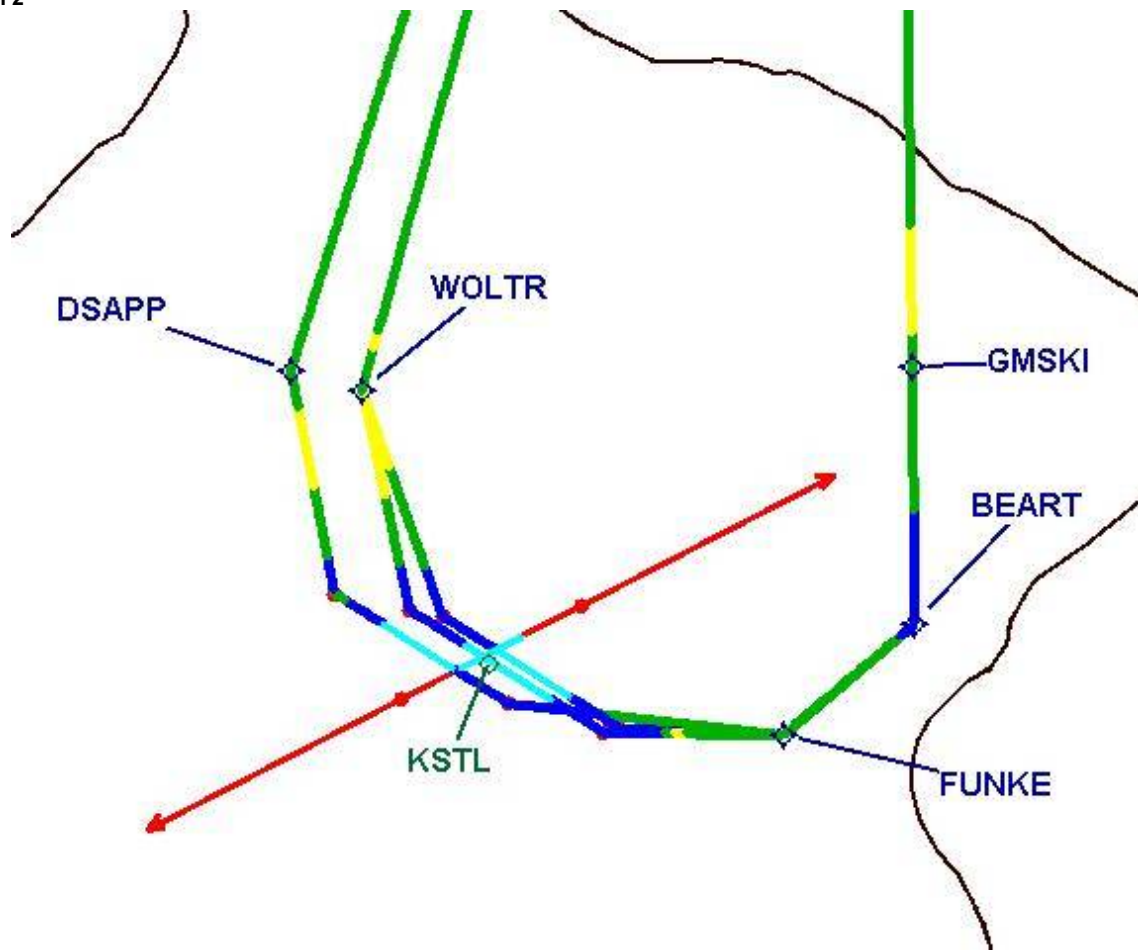


DME DME Assessment Results for ROTRY6 path KSTL:RW30R:DER_WOLTR

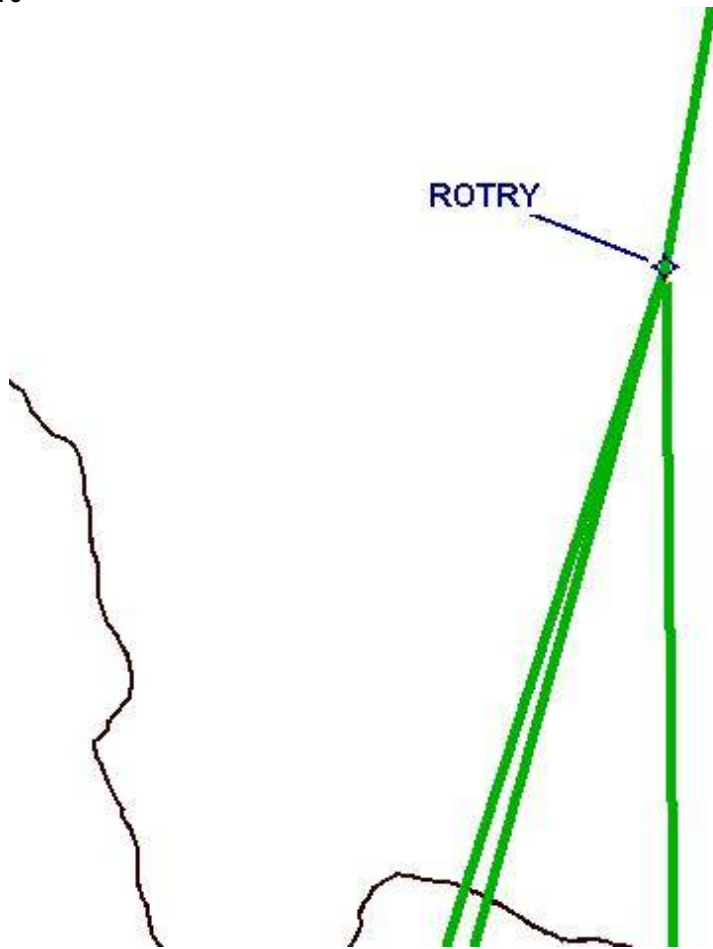
Graphic Depiction 1



Graphic Depiction 2



Graphic Depiction 3



DME DME Assessment Results for ROTRY6 path KSTL:RW30R:DER_WOLTR

Graphic Depiction 4

