

## ROTRY SIX DEPARTURE (RNAV)

ST LOUIS LAMBERT INTL (STL)

**TOP ALTITUDE:**  
5000

RADAR required.

119.15 335.5

D-ATIS

125.025 379.925

CLNC DEL

119.5 363.1

CPDLC

GND CON

121.9 348.6 (Inbound)

121.65 377.175 (Outbound)

118.925 227.125 (Rwy 11/29)

ST. LOUIS TOWER

120.05 284.6 (Rwys 12L/30R, 24)

118.5 257.7 (Rwy 12R/30L)

132.475 239.275 (Rwys 6, 11/29)

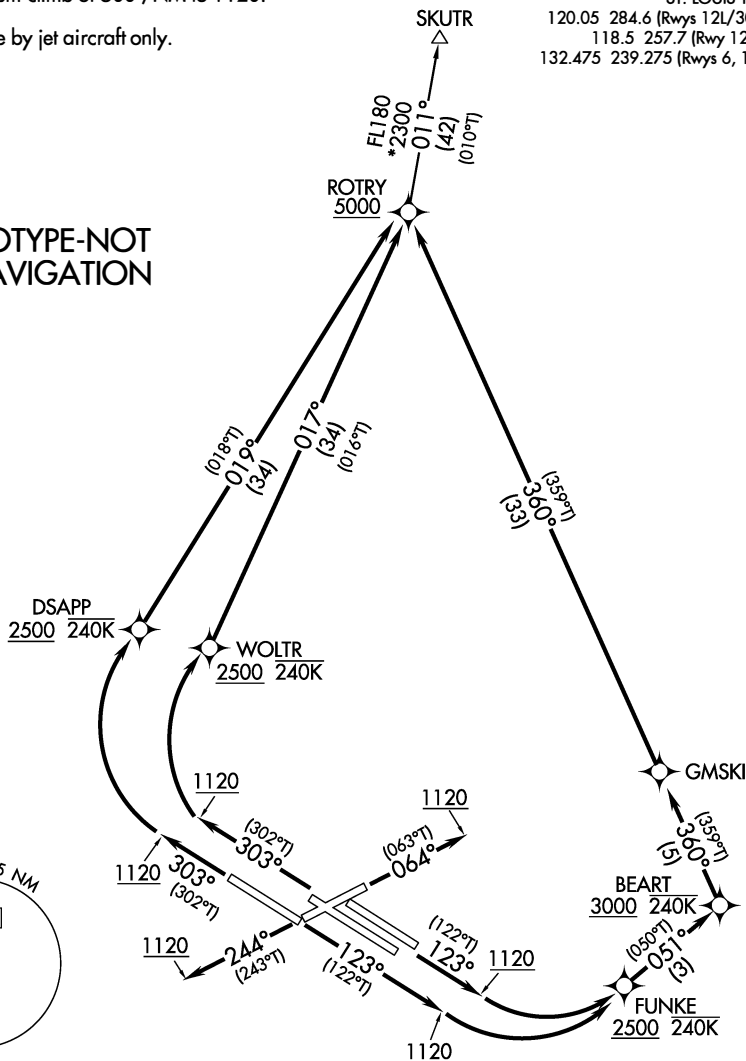
Rwy 6: Standard.

Rwy 24: 200-1<sup>3</sup>/<sub>8</sub> or Standard with minimum climb of 205'/NM to 800.

Rwys 11, 12L/R, 29, 30L/R: Standard with minimum climb of 500'/NM to 1120.

**NOTE:** For use by jet aircraft only.

PROTOTYPE-NOT  
FOR NAVIGATION



(CONTINUED ON FOLLOWING PAGE)

NOTE: Chart not to scale.

## ROTRY SIX DEPARTURE (RNAV)

(ROTRY6.ROTRY) FIG

ST. LOUIS, MISSOURI

ST LOUIS LAMBERT INTL (STL)