

Flight Procedures Cover Page	Task Action: P-NOTAM	Task Type: IAP	Estimated Chart Date: 01/27/2022	APWS Task ID: 174D05D5A7324219A5FEE12744CB1A39	APWS Project ID: D07117F9BB344C2D93558F18F8A2CEFB
Procedure: VOR/DME-A ORIG-B		Enroute: NO	Specialist: Thibodeaux, Charles		Agreement Number:
Airport ID: PHMU			Airport City: KAMUELA		State: HI
Facility ID:	Facility Type:	Flight Inspection Remark Type:			
<p>Procedure Comments: ORDER 8260.3, CHAPTER 2, NEW CIRCLING CRITERIA APPLIED CONTACT JASON KRETSCHMER, AJV-A421, 405-954-4019</p> <div style="display: flex; justify-content: space-between; align-items: flex-end;"> <div style="text-align: center;"> <p><i>Digitally signed by</i> JASON KRETSCHMER Dec 14, 2021</p> </div> <div style="text-align: center;"> <p><i>Digitally signed by</i> MARY MCDONALD Dec 13, 2021</p> </div> </div> <div style="position: absolute; top: 260px; right: 100px; text-align: center;"> <p>QUALITY 47 CHECKED</p> <p>QUALITY 12 CHECKED</p> </div>					

OLD

KAMUELA, HAWAII

AL-5306 (FAA)

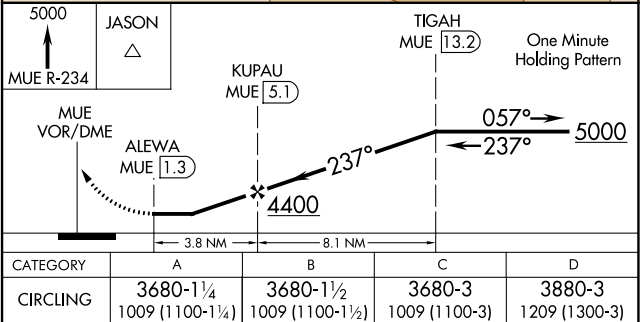
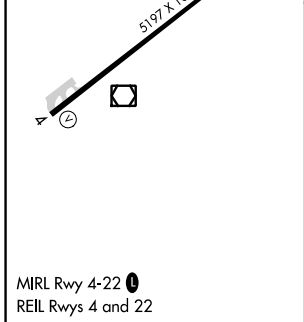
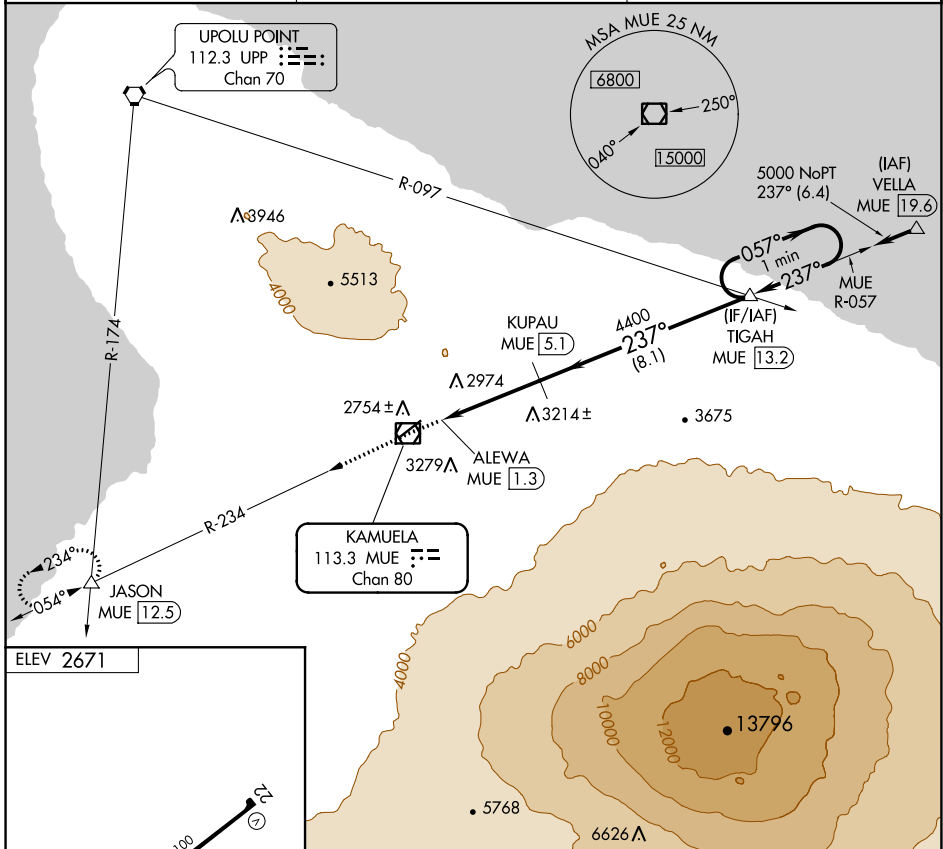
20254

VOR/DME MUE 113.3 Chan 80	APP CRS 237°	Rwy Idg TDZE Apt Elev	N/A N/A 2671
---	------------------------	-----------------------------	---

VOR/DME-A
WAIMEA-KOHALA (MUE)(PHMU)

NA When local altimeter not received, procedure NA. Circling NA northwest of Rwy 4-22.	MISSED APPROACH: Climb to 5000 via MUE R-234 to JASON INT/12.5 DME and hold.
---	--

AWOS-3PT 120.0	HCF CENTER 118.45 278.3	CTAF 122.9
--------------------------	-----------------------------------	----------------------



KAMUELA, HAWAII
Orig-A 15SEP16

WAIMEA-KOHALA (MUE)(PHMU)
VOR/DME-A

20°00'N-155°40'W

PAC, 07 OCT 2021 to 02 DEC 2021

PAC, 07 OCT 2021 to 02 DEC 2021

