

Flight Procedures Cover Page	Task Action: P-NOTAM	Task Type: IAP	Estimated Chart Date: 12/30/2021	APWS Task ID: 172871DBB88848ED82CE820D5B307FC0	APWS Project ID: BF90E1FB53FB4C2FBCB7B8F29B1B7AA1
Procedure: RNAV (GPS) RWY 5 AMDT 0C		Enroute: NO	Specialist: Boone-walt, Rose		Agreement Number:
Airport ID: KOVO			Airport City: NORTH VERNON		State: IN
Facility ID:	Facility Type:	Flight Inspection Remark Type:			
<p>Procedure Comments: PNOTAM CIRCLING RADII INCREASE</p> <p>CONTACT: JASON KRETSCHMER AJV-A421 LEAD: 405.954.4019</p> <p style="text-align: center;"><i>Digitally signed by</i> <b>JASON KRETSCHMER</b> Oct 25, 2021</p>					

QUALITY  
9  
CHECKED

QUALITY  
47  
CHECKED

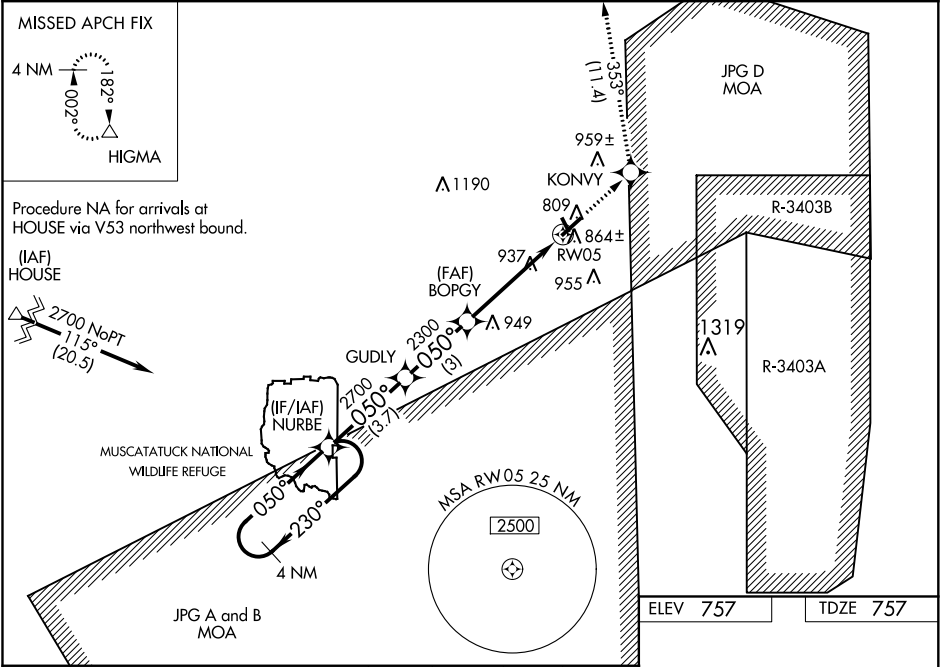
WAAS CH <b>70713</b> <b>W05A</b>	APP CRS <b>050°</b>	Rwy Idg <b>5002</b> TDZE <b>757</b> Apt Elev <b>757</b>
--	------------------------	---



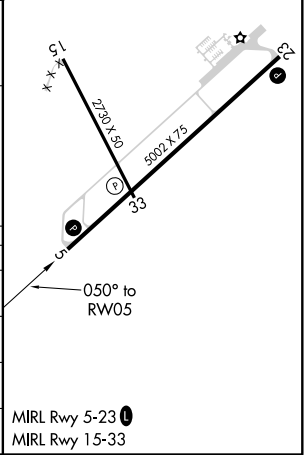
**RNAV (GPS) RWY 5**  
NORTH VERNON (OVO)

<b>NA</b> For uncompensated Baro-VNAV systems, LNAV/VNAV NA below -16°C (4°F) or above 54°C (130°F). DME/DME RNP-0.3 NA. When local altimeter setting not received, use Shelbyville altimeter setting and increase all DA 84 feet, all MDA 100 feet. Increase LPV all Cats visibility 1/8 mile, LNAV/VNAV all Cats visibility 1/4 mile, LNAV Cat C visibility 1/4 mile and Circling Cat C 1/8 mile. VDP and Baro-VNAV NA when using Shelbyville altimeter setting. Helicopter visibility reduction below 3/4 SM NA.	<b>MISSED APPROACH:</b> Climb to 2800 direct KONVY and on track 353° to HIGMA and hold.
--	--

AWOS-3 <b>120.625</b>	INDIANAPOLIS CENTER <b>124.775 269.45</b>	UNICOM <b>122.7 (CTAF) 0</b>
--------------------------	--	---------------------------------



VGSI and RNAV glidepath not coincident (VGSI Angle 3.00/TCH 34).				2800 ↑ KONVY	HIGMA △
4 NM Holding Pattern	NURBE	GUDLY		tr 353°	
2700 ← 230° 050° →		2700	050°	*LNAV only.	
GP 3.00° TCH 40		2300	2300	*1.3 NM to RW05	RW05
	3.7 NM	3 NM	3.4 NM	1.3 NM	
CATEGORY	A	B	C	D	
LPV DA	1091-1¼	334 (400-1¼)		NA	
LNAV/VNAV DA	1116-1¼	359 (400-1¼)		NA	
LNAV MDA	1200-1	443 (500-1)	1200-1⅜ 443 (500-1⅜)	NA	
CIRCLING	1200-1 443 (500-1)	1220-1 463 (500-1)	1220-1½ 463 (500-1½)	NA	



EC-2, 07 OCT 2021 to 04 NOV 2021

EC-2, 07 OCT 2021 to 04 NOV 2021



