

Flight Procedures Cover Page	Task Action: FLIGHT CHECK	Task Type: IAP	Estimated Chart Date: 08/11/2022	APWS Task ID: 16E3D9BEFB294A49A0DAAB7027BCE2EF	APWS Project ID: ABA440EBC08D472C9C42E8DA4AD44C71
Procedure: VOR RWY 26L/R AMDT 4B		Enroute: NO	Specialist: Fowler, Shane		Agreement Number:
Airport ID: KLAS			Airport City: LAS VEGAS		State: NV
Facility ID:	Facility Type:	Flight Inspection Remark Type: New FC Slot			
<p>Procedure Comments: PNOTAM</p> <p>THIS CLEARS FDC NOTAM # 1/8085.</p> <p>PROCESSED IAW AIRCRAFT OPERATIONS GROUP (AJF-1000) MEMO, DATED JUNE 4, 2020, SUBJECT: FLIGHT INSPECTION OF NEW CONTROLLING OBSTACLES.</p> <p>ACTIVE AIRPORT DATA USED.</p> <p>CONTACT: ALLAN WILL 405-954-6103.</p>					

QUALITY  
9  
CHECKED

QUALITY  
2  
CHECKED

VORTAC LAS <b>116.9</b> Chan 116	APP CRS <b>262°</b>	Rwy Idg TDZE Apt Elev	26L <b>10526</b> <b>2069</b> <b>2181</b>	26R <b>12638</b> <b>2067</b> <b>2181</b>
--	------------------------	-----------------------------	---	---

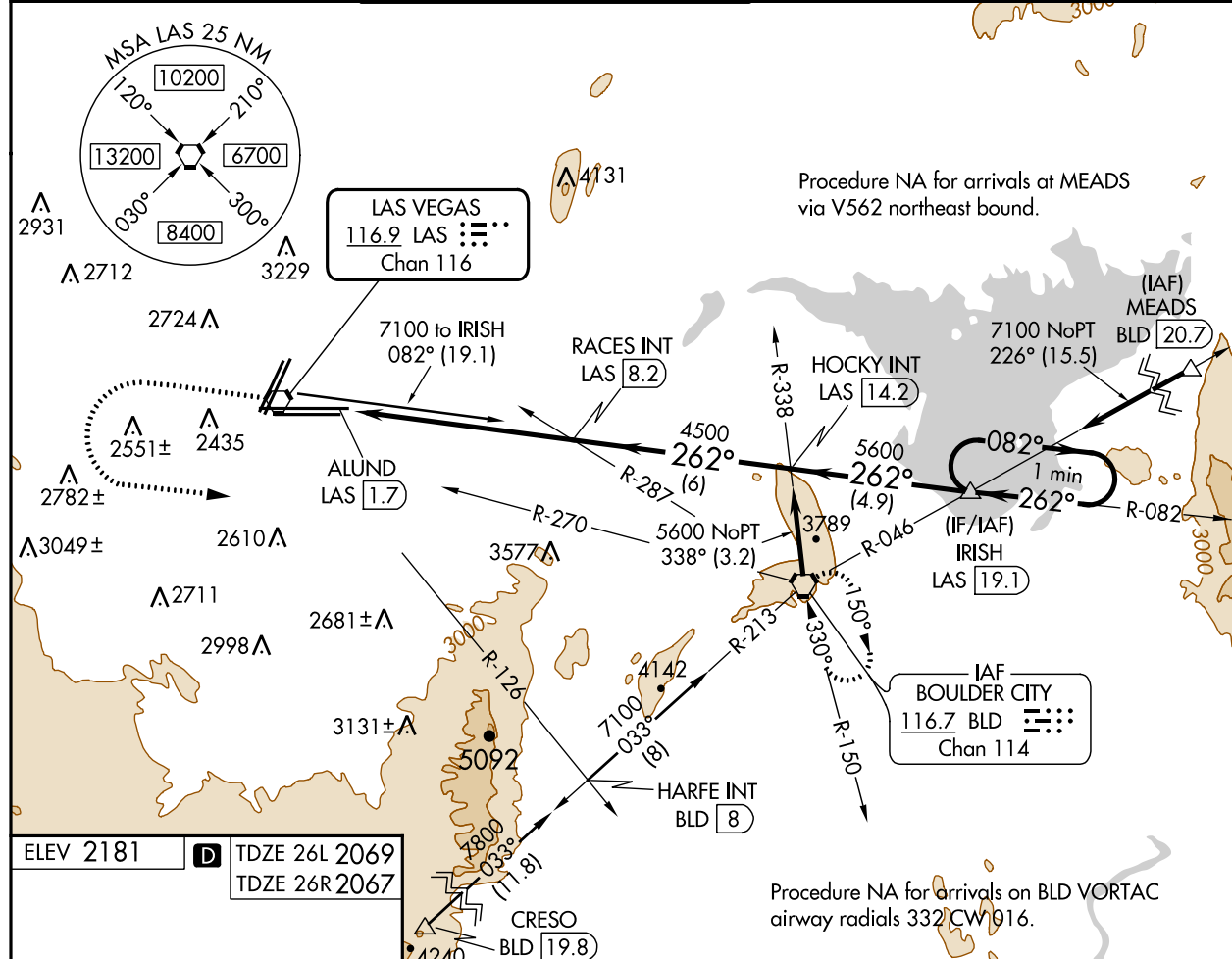
**OLD**

# VOR RWY 26L/R

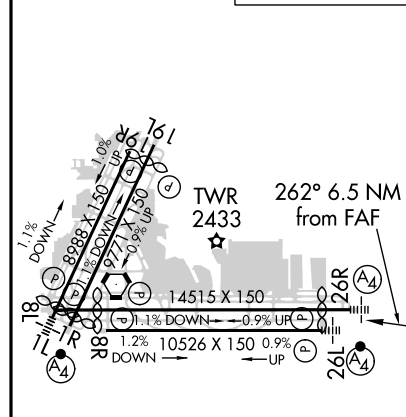
## HARRY REID INTL (LAS)

<b>▼</b> <b>▲</b>	For inop ALS, increase S-26L and S-26R Cat D visibility ¼ SM.	MALSF Rwy 26L 	MALS Rwy 26R 	MISSED APPROACH: Climb to 4000 then climbing left turn to 6000 on heading 074° and BLD R-270 to BLD VORTAC and hold.
----------------------	---	-------------------	------------------	--

D-ATIS <b>132.4</b>	LAS VEGAS APP CON <b>125.025 379.15</b> (West) <b>125.6 282.2</b> (East)	LAS VEGAS TOWER <b>118.75 257.8</b> (Rwy 1L/19R, 1R/19L) <b>119.9 257.8</b> (Rwy 8L/26R, 8R/26L)	GND CON <b>121.1 270.8</b> E of 1R/19L <b>121.9 254.3</b> W of 1R/19L	CLNC DEL <b>118.0</b>	CPDLC
------------------------	--	--	---	--------------------------	-------



ELEV 2181	<b>D</b>	TDZE 26L 2069 TDZE 26R 2067
-----------	----------	--------------------------------



REIL Rwy 1R, 8R, 19L and 19R  
MIRL Rwy 1R-19L  
HIRL Rwy 1L-19R, 8L-26R and 8R-26L

FAF to MAP 6.5 NM					
Knots	60	90	120	150	180
Min:Sec	6:30	4:20	3:15	2:36	2:10

CATEGORY	A		B		C		D	
	S-26L		S-26R		S-26L		S-26R	
S-26L	2720-¾ 651 (600-¾)		2720-¾ 653 (600-¾)		2720-1½ 651 (600-1½)		2720-1½ 653 (600-1½)	
S-26R	2720-¾ 651 (600-¾)		2720-¾ 653 (600-¾)		2720-1½ 651 (600-1½)		2720-1½ 653 (600-1½)	
<b>C</b> CIRCLING	3020-1¼ 839 (900-1¼)		3040-1¼ 859 (900-1¼)		3100-2¾ 919 (1000-2¾)		3540-3 1359 (1400-3)	



