


<b>Flight Procedure Tracking Form</b>		<b>Action:</b> AMENDMENT	<b>Task Type:</b> IAP	<b>Date Open:</b> 10/17/2019	<b>Task #:</b> 2019101735150401002	<b>Request #:</b> 20191017351504
<b>Procedure:</b> APPROACH VOR A AMDT 6C			<b>Airport ID:</b> KLLQ	<b>Airport:</b> MONTICELLO MUNI/ELLIS FIELD		<b>Reimbursable #:</b> NO
<b>City:</b> MONTICELLO	<b>ST:</b> AR	<b>GPS #:</b>	<b>Estimated Chart Date:</b> 03/26/2020			<b>FICO #:</b>
<b>Fac ID:</b> N/A		<b>Fac. Type:</b>			<b>Specialist:</b> ALEXANDER MILES	
<b>Procedure Review</b>						
	<b>Rec'd</b>	<b>Rel'd</b>	<b>Full Name</b>	<b>Comments</b>		
<b>Lead:</b>	10/22/2019					
<b>QA:</b>						
<b>Liaison:</b>						
<b>Procedure Comments:</b>			ENROUTE-NON	<b>Remark Type:</b> INFORMATION		
P-NOTAM  NEW CIRCLING AREAS  PROCESSED IAW AIRCRAFT OPERATIONS GROUP (AJW-33) MEMO, OCTOBER 3, 2018, SUBJECT: FLIGHT INSPECTION REVIEW NOT REQUIRED.  DAVE DANNER, 405-954-5077						



MONTICELLO, ARKANSAS

AL-5695 (FAA)

18200

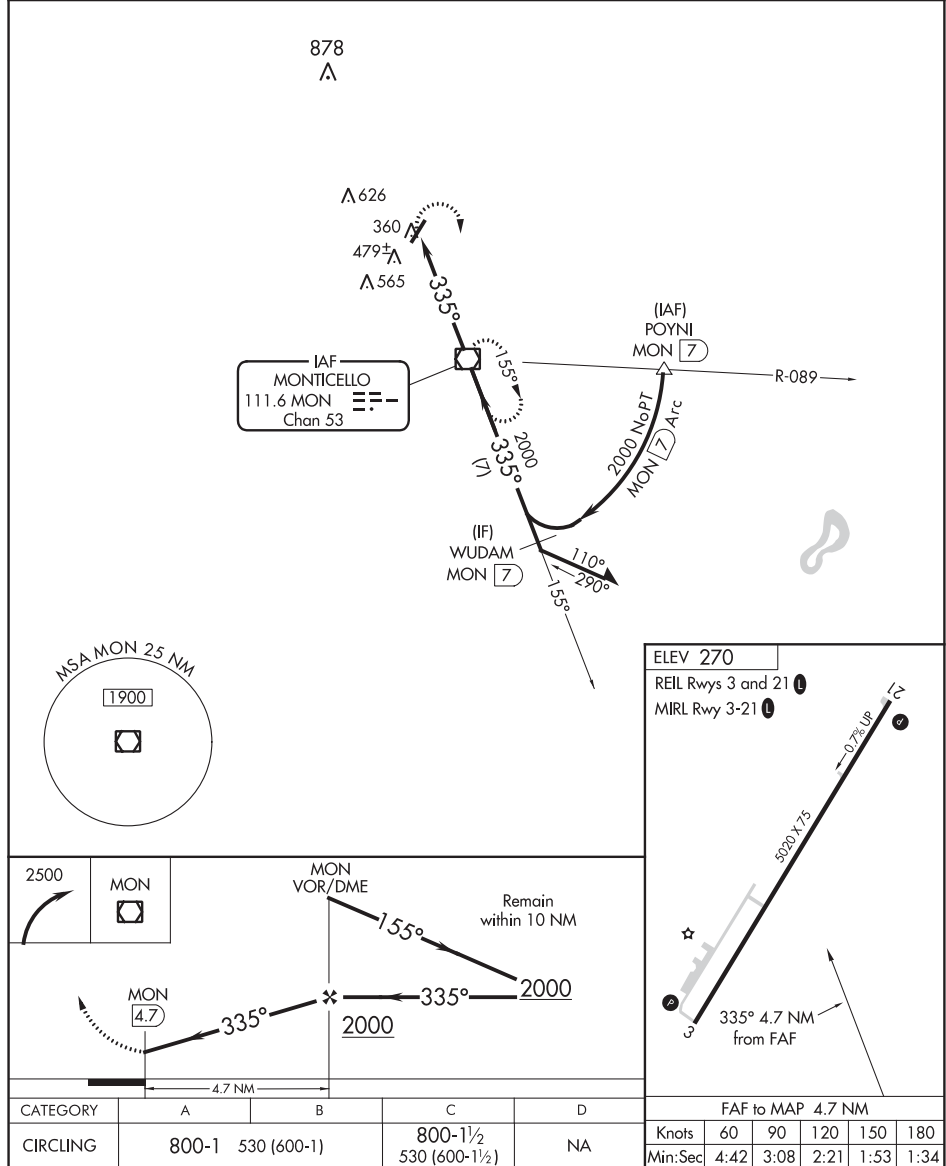
VOR/DME MON <b>111.6</b> Chan <b>53</b>	APP CRS <b>335°</b>	Rwy Idg TDZE Apt Elev <b>N/A</b> <b>N/A</b> <b>270</b>	<b>OLD</b>	<b>VOR-A</b> MONTICELLO MUNI/ELLIS FIELD (LLQ)
---	------------------------	---	------------	---

**⚠** When local altimeter setting not received, use Pine Bluff altimeter setting and increase all MDA 100 feet and Cat C visibility ¼ mile.

**MISSED APPROACH:** Climbing right turn to 2500 direct MON VOR/DME and hold. Continue climb in hold to 2500.

ASOS <b>133.325</b>	MEMPHIS CENTER <b>135.875 269.35</b>	UNICOM <b>122.8(CTAF) 0</b>
------------------------	---	--------------------------------

SC-1, 07 NOV 2019 to 05 DEC 2019



SC-1, 07 NOV 2019 to 05 DEC 2019

MONTICELLO, ARKANSAS  
Amdt 6B 19JUL18

33°38'N-91°45'W

MONTICELLO MUNI/ELLIS FIELD (LLQ)  
**VOR-A**

## STANDARD INSTRUMENT APPROACH PROCEDURE DATA RECORD

## PART - A OBSTRUCTION DATA

1. APP SEGMENT		FROM		TO		OBSTRUCTION		COORDINATES		ELEV. MSL		ROC		ALT. ADJUSTMENTS		MIN. ALT.			
STRAIGHT-IN AREA		121/30 CW 301/30		YASUK		1. TOWER (05-000695)		340954.51N/0915022.76W		691 (2C)		1000		AT309		2000			
						2. TERRAIN		335427.00N/0915112.00W		407 (400)				AS1500		1900			
STRAIGHT-IN AREA		301/30 CW 121/30		YASUK		3. TOWER (05-001360)		334349.00N/0914856.00W		878 (5D)		1000		AT122		2000			
						2. TERRAIN		335427.00N/0915112.00W		407 (400)				AS1500		1900			
INTERMEDIATE		YASUK (IF/IAF)		TONYY		4. AAO		334530.00N/0914212.00W		447 (4E)		500		AC98 AT955		2000			
						5. TERRAIN		334530.00N/0914212.00W		247 (200)				AS1500		1700			
FINAL: LPV		TONYY		RW21		6. TREE (KLLQT0285)		333842.97N/0914439.27W		342 (1A)		34:1		MA9		514/259			
FINAL: LNAV/VNAV		TONYY		RW21		7. TREE (KLLQT0350)		333837.17N/0914517.18W		350 (1A)		161				532/277			
FINAL: LNAV		TONYY		JUGAG/3.00 NM TO RW21		8. AAO		334209.00N/0914303.00W		420 (2C)		250		RA86 DG480		1240			
FINAL: LNAV STEPDOWN		JUGAG/3.00 NM TO RW21		RW21		7. TREE (KLLQT0350)		333837.17N/0914517.18W		350 (1A)		250				600			
2. HOLD-IN-LIEU-OF-PT		YASUK		P-4		9. AAO		334657.00N/0914257.00W		466 (4E)		1000		AT534		2000			
						10. TERRAIN		334657.00N/0914257.00W		266 (300)				AS1500		1800			
3. MISSED APPROACH	MAP:		DA / DA / RW21		JOSAS		11. TREE (KLLQT0310)		333857.48N/0914430.11W		307 (1A)		ASC				2000		
	ELEV:		301/380/500				12. AAO		333427.00N/0914648.00W		594 (4E)		1000				1600		
							13. TERRAIN		333427.00N/0914648.00W		394 (400)				AS1500		1900		
4. CIRCLING AREA		DISTANCE		HT. ABV. ARPT.															
CATEGORY A		1.3 NM		REQUIRED	350	ACTUAL	512	14. TREE (KLLQT0218)		333708.61N/0914615.48W		470 (1A)		300		780			
CATEGORY B		1.5 NM			450		512	15. TREE (KLLQT0248)		333648.42N/0914652.02W		473 (1A)		300		780			
CATEGORY C		1.7 NM			450		712	16. TOWER (05-000477)		333924.00N/0914803.00W		626 (5D)		300		AC50		980	
CATEGORY D		2.3 NM			550		712	16. TOWER (05-000477)		333924.00N/0914803.00W		626 (5D)		300		AC50		980	
CATEGORY E		4.5 NM			550														
5. MINIMUM SAFE ALTITUDES																			
PRIMARY NAVAID:																			
SECTOR	OBSTRUCTION	BRG/DIST	ELEVATION (MSL)	M S A	SECTOR	OBSTRUCTION	BRG/DIST	ELEVATION (MSL)	M S A										
CITY AND STATE		ELEVATION: 268		FACILITY		PROCEDURE AND AMENDMENT NO:		REGION											
MONTICELLO, AR		AIRPORT NAME: MONTICELLO MUNI/ELLIS FIELD		RNAV		RNAV (GPS) RWY 21, AMDT 2		ASW											

QUALITY  
5  
CHECKER

MAP from KLLQ RNAV (GPS) RWY 21 showing new circling areas and controlling obstacles.

