

Flight Procedures Cover Page	Task Action: FLIGHT CHECK	Task Type: IAP	Estimated Chart Date: 04/17/2025	APWS Task ID: 15CC6D7BEDBF42088B22469ABEEBD1E9	APWS Project ID: 6040ECC7BFAD42478156E01BD2D78AD9
Procedure: RNAV (GPS) RWY 35 AMDT 1		Enroute: NO	Specialist: Weston, Daniel		Agreement Number:
Airport ID: KPLU			Airport City: PUYALLUP		State: WA
Facility ID:	Facility Type:	Flight Inspection Remark Type: New FC Slot			
<div>Procedure Comments: ACTIVE AIRNAV DATA USED.</div> <div>CONTACT RAKE MCGRAW 405-954-8711.</div> <div>QUALITY 26 CHECKED</div> <div>QUALITY 9 CHECKED BEGUE</div>					

<b>FIPC BASIC FORM</b>								
<b>PROCEDURE:</b> RNAV (GPS) RWY 35 AMDT 1			<b>AIRPORT NAME:</b> PIERCE COUNTY/THUN FLD		<b>AIRPORT ID:</b> KPLU		<b>SPECIAL CONTROL NO:</b> SG-01-185-25	
<b>FAC ID:</b> KPLU35.01		<b>CITY:</b> PUYALLUP			<b>ST:</b> WA		<b>ORIG CHART DATE:</b> 04/17/2025	
<b>DFL TYPE:</b> PROC/S	<b>THIRD PARTY:</b> <input type="checkbox"/> YES	<b>EST. TIME ON SITE:</b> 0.4	<b>REIMB. NUMBER:</b>		<b>PTS TASK ID:</b> 15CC6D7BEDBF42088B22469ABEEBD1E9			
<b>PREFLIGHT NOTES</b>								
<b>REVIEWER:</b> troy e devine						<b>DATE:</b> 02/26/2025		
<b>COMMENTS:</b>						<b>CHECK ONE:</b>		
						<input checked="" type="checkbox"/> FLT CK REQ <input type="checkbox"/> NFCR <input type="checkbox"/> REJECT		
								<b>YES</b>
						<b>CPV COMPLETE?</b>		<b>X</b>
<b>PROCEDURE RESULTS</b>								
<b>INSPECTION DATE:</b> 02/26/2025		<b>CREW #:</b> VN502	<b>N #:</b> N72	<b>INSTRUMENT PROCEDURE STATUS:</b> <input checked="" type="checkbox"/> SAT <input type="checkbox"/> SAT W/CHANGES <input type="checkbox"/> UNSAT		<b>ARINC CODING:</b> <input checked="" type="checkbox"/> SAT <input type="checkbox"/> SAT/GOLD <input type="checkbox"/> UNSAT		
<b>FLIGHT INSPECTOR SIGNATURE:</b> troy e devine @ 02/26/2025 19:35			<b>PRINTED NAME:</b> DEVINE, TROY ELLEN				<b>NOTAM INITIATED?</b> <input type="checkbox"/> YES <input checked="" type="checkbox"/> NO	
<b>FLIGHT INSPECTOR REMARKS:</b> SG-01-185-25 PIERCE COUNTY/THUN FLD, Puyallup, WA., RNAV (GPS) RWY 35 - SAT Reconfiguration: New IAFs: HULKI and TREWS, small fix location changes, CRC change, ROCs verified, RWY survey - SAT								
<b>IN-FLIGHT OBSTACLE REPORT</b>								
<b>OBSTRUCTION ID #:</b>	<b>COORDINATES OR LOCATION:</b>		<b>GNSS ALTITUDE (MSL):</b>		<b>BAROMETRIC ALTITUDE (MSL):</b>		<b>HEIGHT ABOVE GROUND LEVEL:</b>	

PUYALLUP, WASHINGTON

AL-9104 (FAA)

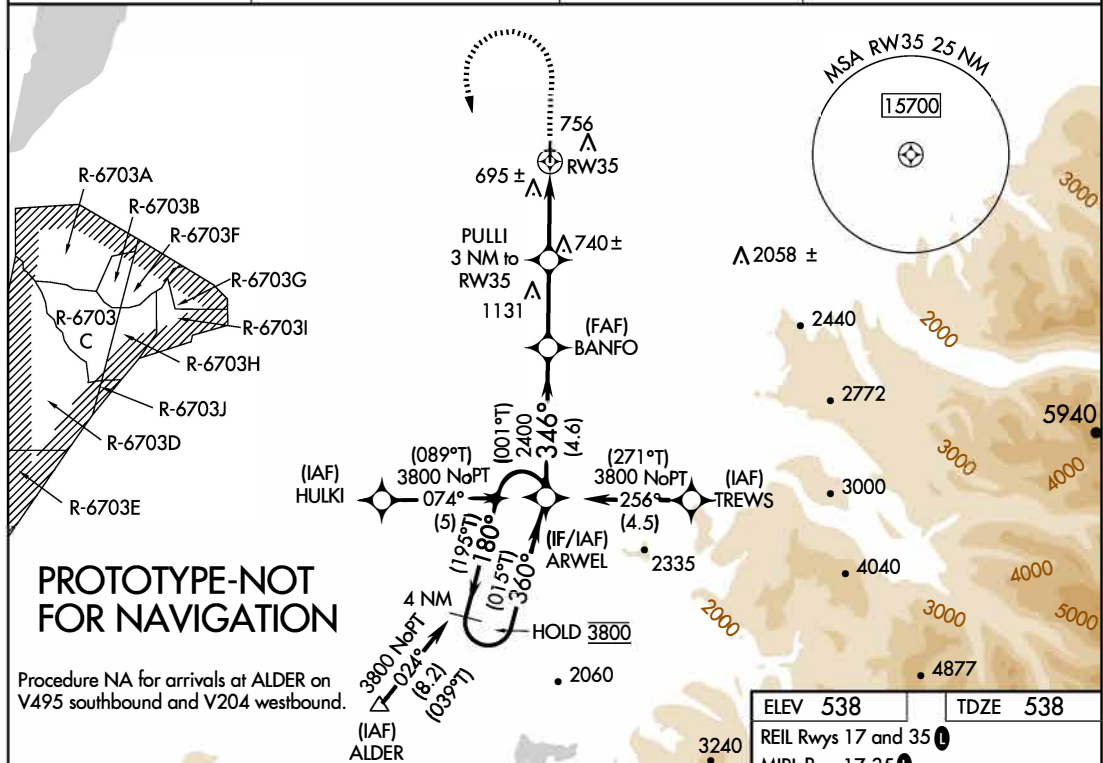
FIG

WAAS CH <b>57938</b> <b>W35A</b>	APP CRS <b>346°</b>	Rwy ldg TDZE Apt Elev	<b>3651</b> <b>538</b> <b>538</b>
--	------------------------	-----------------------------	---

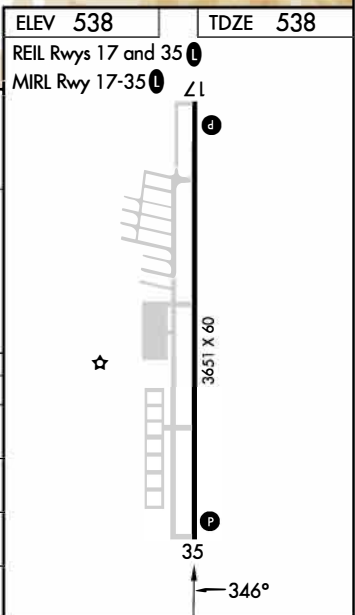
# **RNAV (GPS) RWY 35** PIERCE COUNTY/THUN FLD (PLU)

RNP APCH - GPS.		MISSED APPROACH: Climb to 2000 then climbing left turn to 3800 direct ARWEL and hold.	
<p>⚠ For uncompensated Baro-VNAV systems, LNAV/VNAV NA below -16°C or above 54°C. Baro-VNAV and VDP NA when using TCM altimeter setting. Rwy 35 helicopter visibility reduction below 3/4 SM NA. When local altimeter setting not received, use TCM altimeter setting and increase LPV DA to 960 feet and all visibilities 1/4 SM; increase LNAV/VNAV DA to 1049 feet; increase all MDAs 60 feet.</p>			

AWOS-3 <b>128.575</b>	SEATTLE APP CON <b>126.5 377.15</b>	CLNC DEL <b>121.85</b>	UNICOM <b>122.7 (CTAF) 0</b>
--------------------------	--	---------------------------	---------------------------------



4 NM Holding Pattern		VGSI and RNAV glidepath not coincident (VGSI Angle 4.00/TCH 53).	
ARWEL		BANFO	
3800		2400	
GP 3.00°		1540	
TCH 53		1 NM to RW35	
4.6 NM		2.7 NM	
2 NM		1 NM	
CATEGORY	A	B	C
LPV DA	911-1	373 (400-1)	NA
LNAV/VNAV DA	1000-1 3/8	462 (500-1 3/8)	NA
LNAV MDA	1000-1	462 (500-1)	NA
CIRCLING	1080-1	542 (600-1)	NA



**AUTOMATED AL-9104 RNAV (GPS) RWY 35**  
**AUTOMATED AL-9104 RNAV (GPS) RWY 35**

NW-1  
1-6-24  
COMPILER: JUN  
REVIEWER:  
DBL CHKR:  
EFF: FIG

PUYALLUP, WASHINGTON

Amdt 1 FIG

47°06'N-122°17'W

PIERCE COUNTY/THUN FLD (PLU)  
**RNAV (GPS) RWY 35**

WAAS CH <b>57938</b> <b>W35A</b>	APP CRS <b>346°</b>	Rwy Idg TDZE <b>538</b> Apt Elev <b>538</b>	<b>3651</b> <b>538</b> <b>538</b>
--	------------------------	---	---

OLD

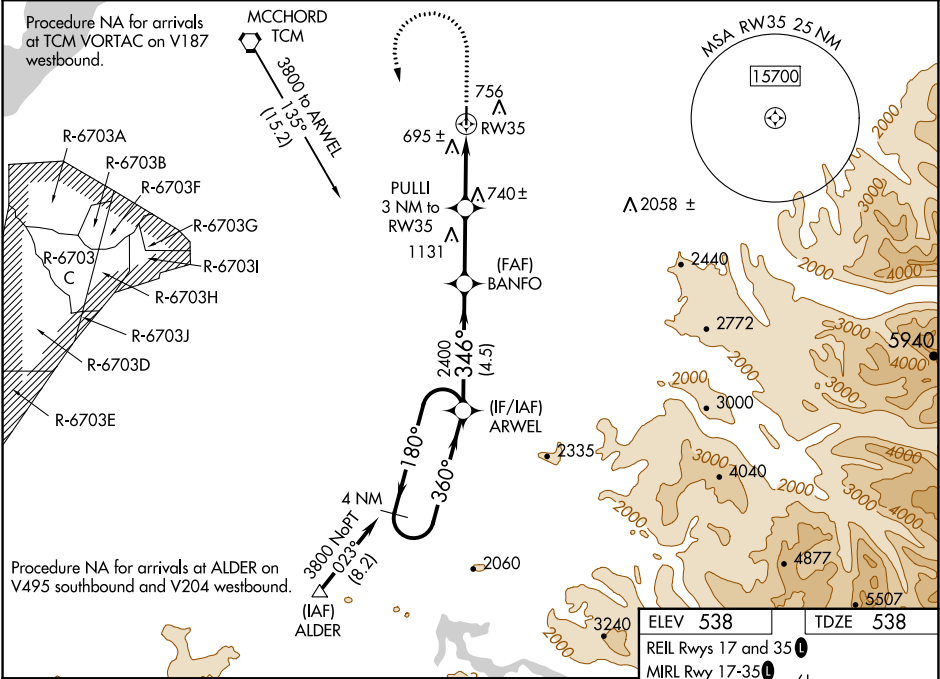
# RNAV (GPS) RWY 35

PIERCE COUNTY-THUN FLD (PLU)

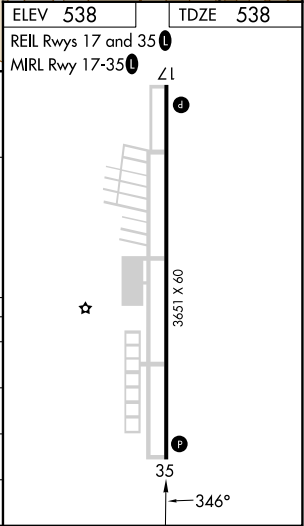
▼ For uncompensated Baro-VNAV systems, LNAV/VNAV NA below -16°C (4°F) or above 54°C (130°F). DME/DME RNP-0.3 NA. Helicopter visibility reduction below ¾ SM NA. Baro-VNAV and VDP NA with McChord Fld altimeter setting. When local altimeter not received, use McChord Fld altimeter setting and increase all DA 49 feet and increase LPV and LNAV/VNAV visibilities ¼ mile; increase all MDA 60 feet.

MISSED APPROACH: Climb to 1900 then climbing left turn to 3800 direct ARWEL and hold.

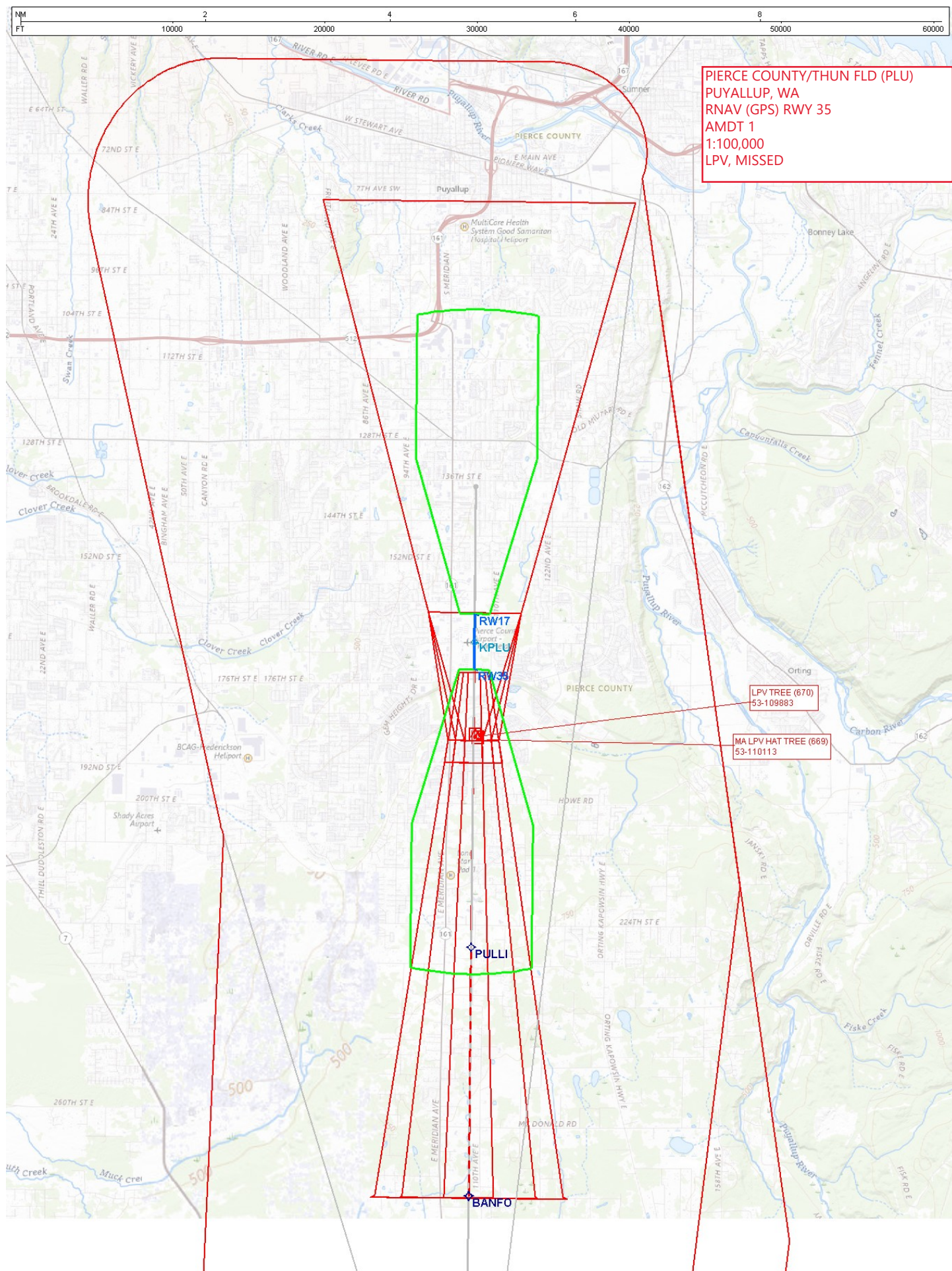
AWOS-3 <b>128.575</b>	SEATTLE APP CON <b>126.5 377.15</b>	CLNC DEL <b>121.85</b>	UNICOM <b>122.7 (CTAF) 0</b>
--------------------------	--	---------------------------	---------------------------------



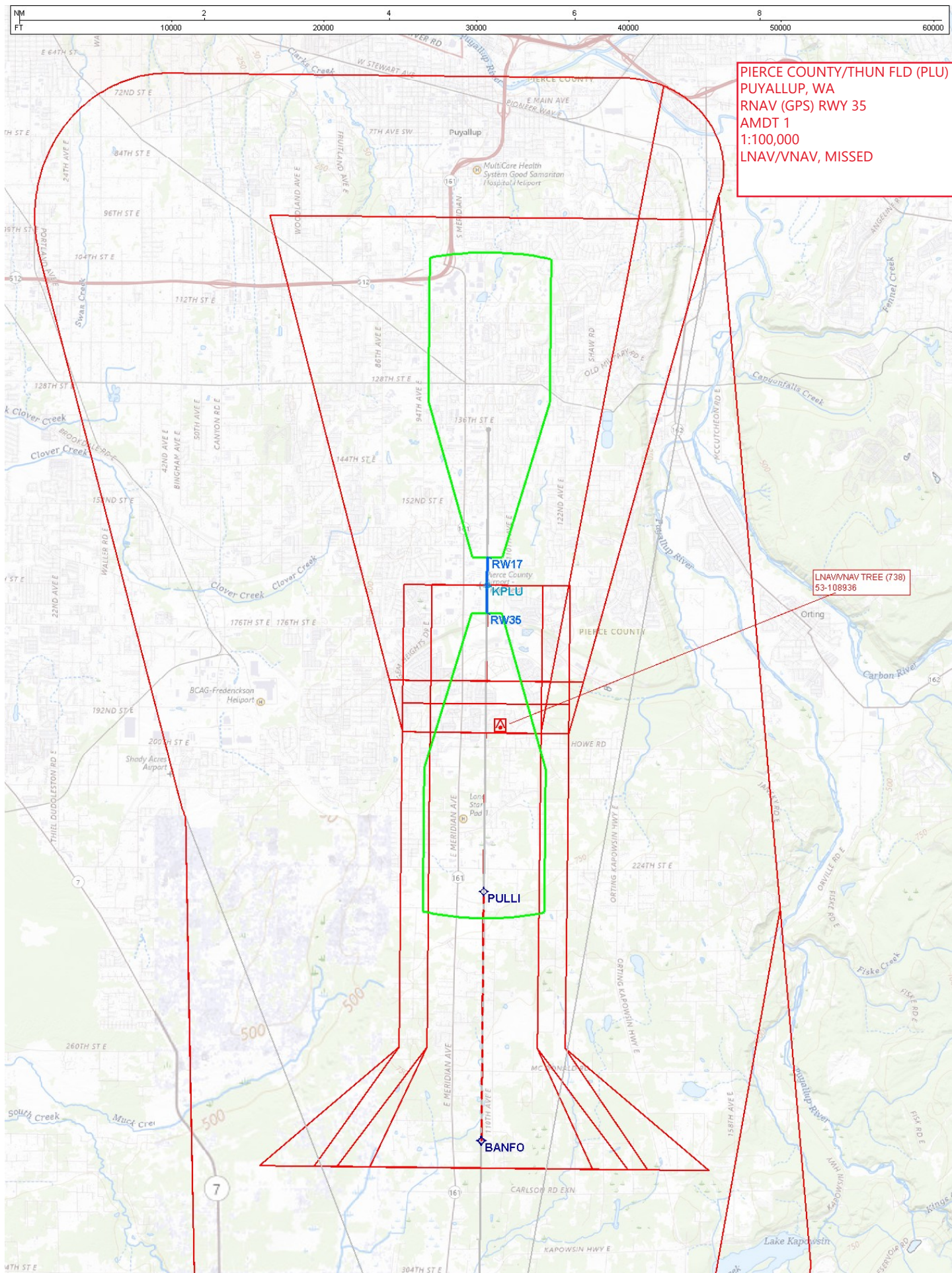
VGSi and RNAV glidepath not coincident (VGSi Angle 4.00/TCH 53).				
4 NM Holding Pattern				
GP 3.00° TCH 53				
3800 ← 180° → 360° → 346° → 2400 → *1540 → 1900 → 3800 → ARWEL				
4.5 NM 2.7 NM 1.6 NM 1.4 NM				
CATEGORY	A	B	C	D
LPV DA	877-1 ⅓	339 (400-1 ⅓)	NA	
LNAV/VNAV DA	990-1 ½	452 (500-1 ½)	NA	
LNAV MDA	1000-1	462 (500-1)	NA	
CIRCLING	1080-1	542 (600-1)	NA	











PIERCE COUNTY/THUN FLD (PLU)  
PUYALLUP, WA  
RNAV (GPS) RWY 35  
AMDT 1  
1:100,000  
LNAV/VNAV, MISSED

LNAV/VNAV TREE (738)  
53-108936



