

Flight Procedures Cover Page	Task Action: FLIGHT CHECK	Task Type: STAR	Estimated Chart Date: 10/02/2025	APWS Task ID: 14E76A783ECD46988379D846D8D5069C	APWS Project ID: 3399CA8DF6DC463BA8A4B9F55F258010
Procedure: MADEE (RNAV) SIX ARRIVAL		Enroute: YES	Specialist: Swinson, Robert		Agreement Number:
Airport ID: KBLI			Airport City: BELLINGHAM		State: WA
Facility ID:	Facility Type:	Flight Inspection Remark Type: New FC Slot			
<div>Procedure Comments:</div> <div>REPLACED PAINE (PAE) VOR/DME WITH KONAHP. CONTACT CASIMIR TABAKA 405-954-7931.</div> <div><div>QUALITY 41 CHECKED</div><div>05/12/2025 QUALITY 14 CHECKED</div></div>					

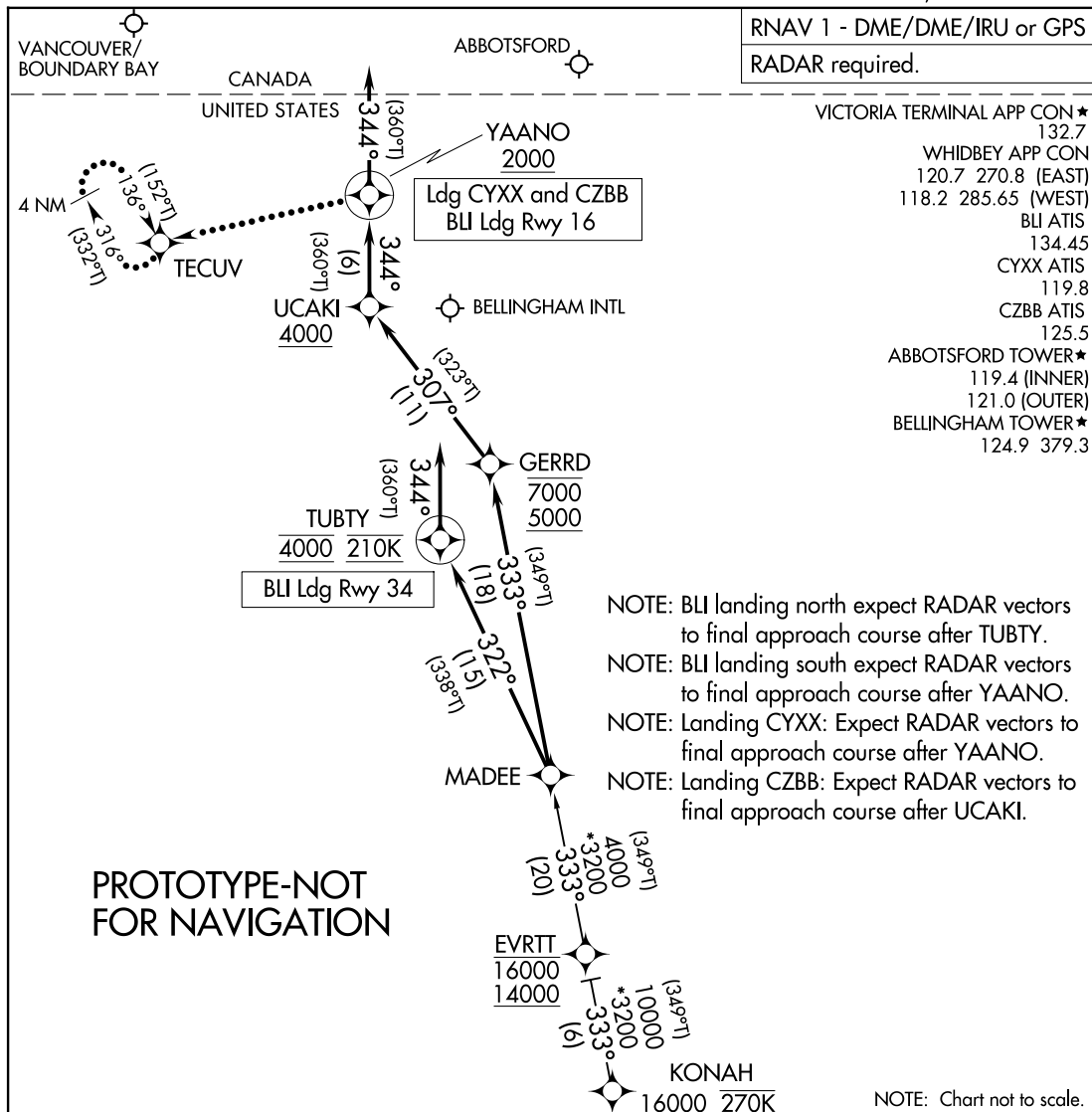
NEW

(MADEE.MADEE6) FIG

MADEE SIX ARRIVAL (RNAV)

AL-45 (FAA)

BELLINGHAM, WASHINGTON



AUTOMATED AL-45 MADEE ARRIVAL

NW-1

5-8-25

COMPILER: JUN

REVIEWER:

DBL CHKR:

EFF: FIG

MADEE SIX ARRIVAL (RNAV)

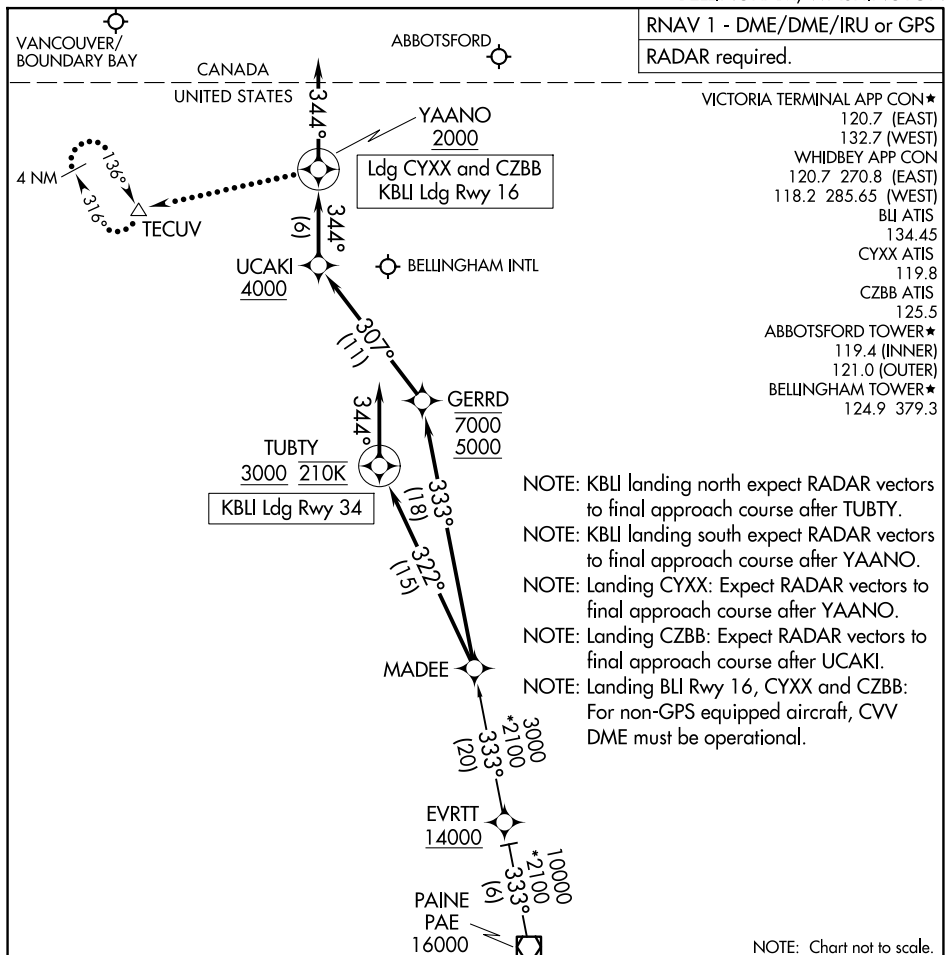
BELLINGHAM, WASHINGTON

(MADEE.MADEE6) FIG

OLD

AL-45 (FAA)

BELLINGHAM, WASHINGTON



PAINE TRANSITION (PAE.MADEE5)

LANDING BLI RUNWAY 16: From MADEE on track 333° to cross GERRD between 5000 and 7000, then on track 307° to cross UCAKI at or above 4000, then on track 344° to cross YAANO at or above 2000, then on track 344°. Expect RADAR vectors to final approach course.

LANDING BLI RUNWAY 34: From MADEE on track 322° to cross TUBTY at or above 3000 and at 210K, then on track 344°. Expect RNAV (RNP/GPS) RWY 34 approach or RADAR vectors to final approach course.

LANDING CZBB/CYXX: From MADEE on track 333° to cross GERRD between 5000 and 7000, then on track 307° to cross UCAKI at or above 4000, then on track 344° to cross YAANO at or above 2000, then on track 344°. Expect RADAR vectors to final approach course.

LOST COMMUNICATIONS

LANDING BLI RUNWAY 16: After UCAKI conduct RNAV (RNP) Z RWY 16 approach; If unable, proceed to YAANO maintain 2000 and proceed to TECUV and hold.

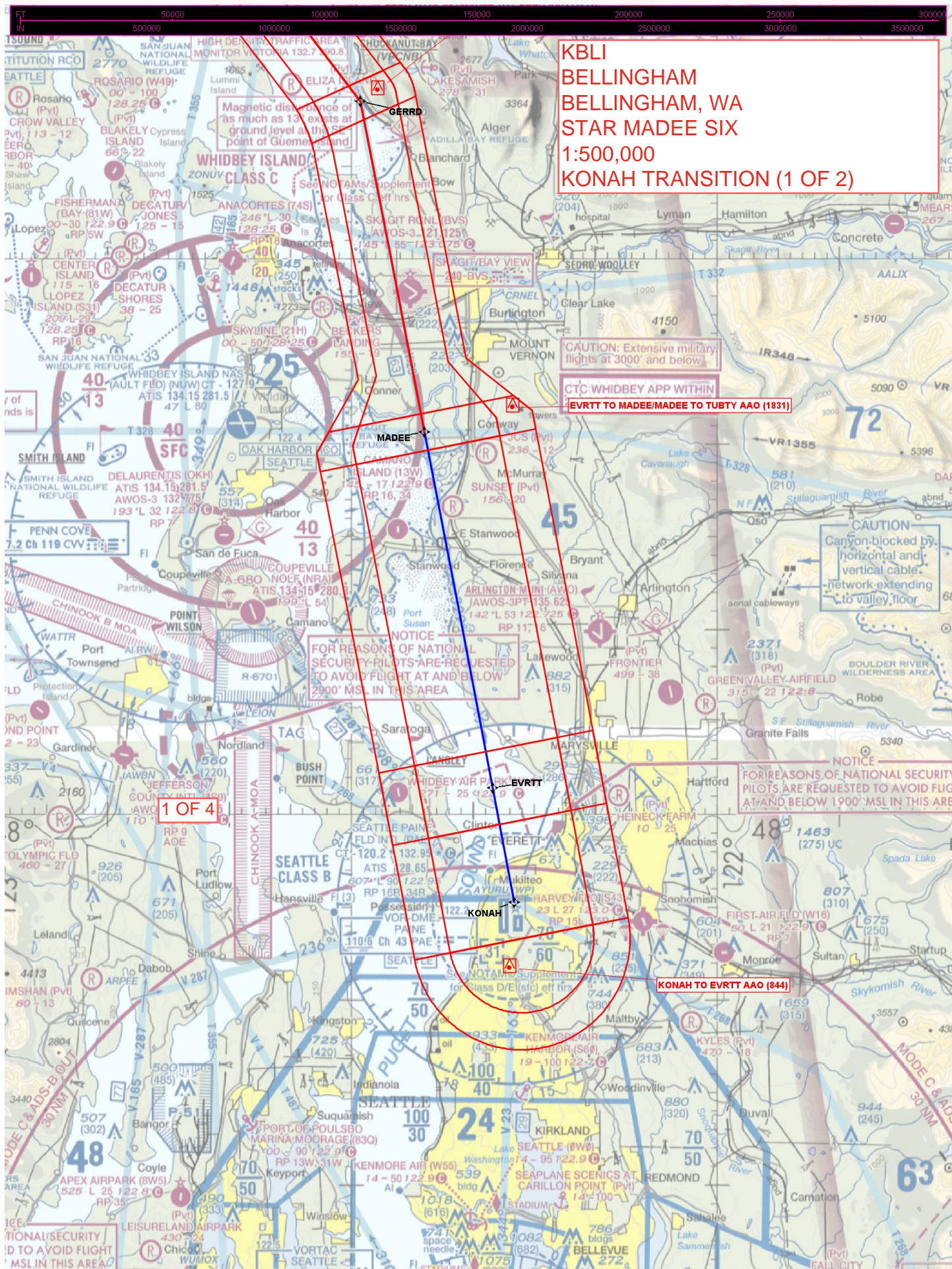
LANDING CYXX and CZBB: After YAANO maintain 2000 and proceed to TECUV and hold.

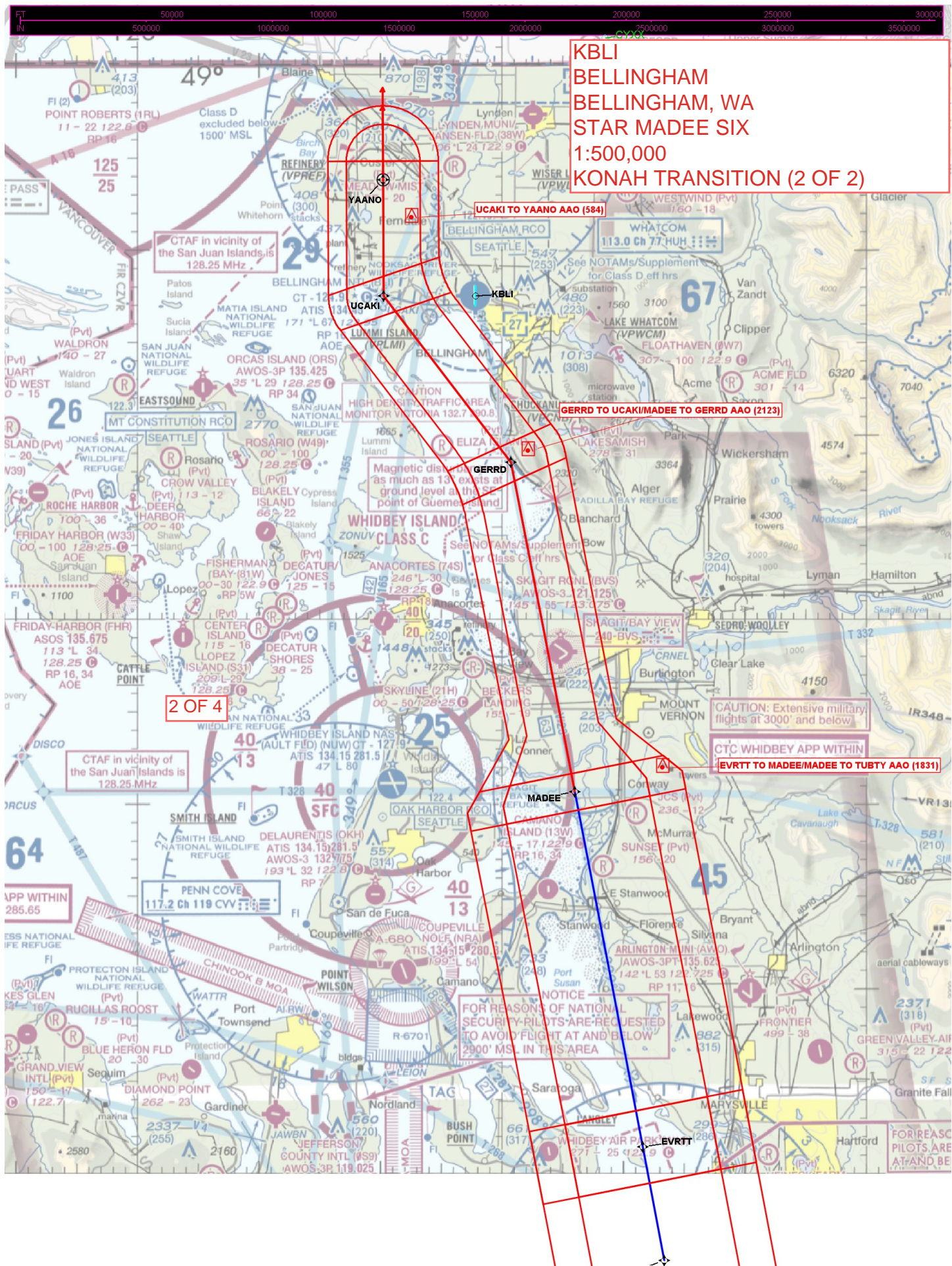
BELLINGHAM, WASHINGTON

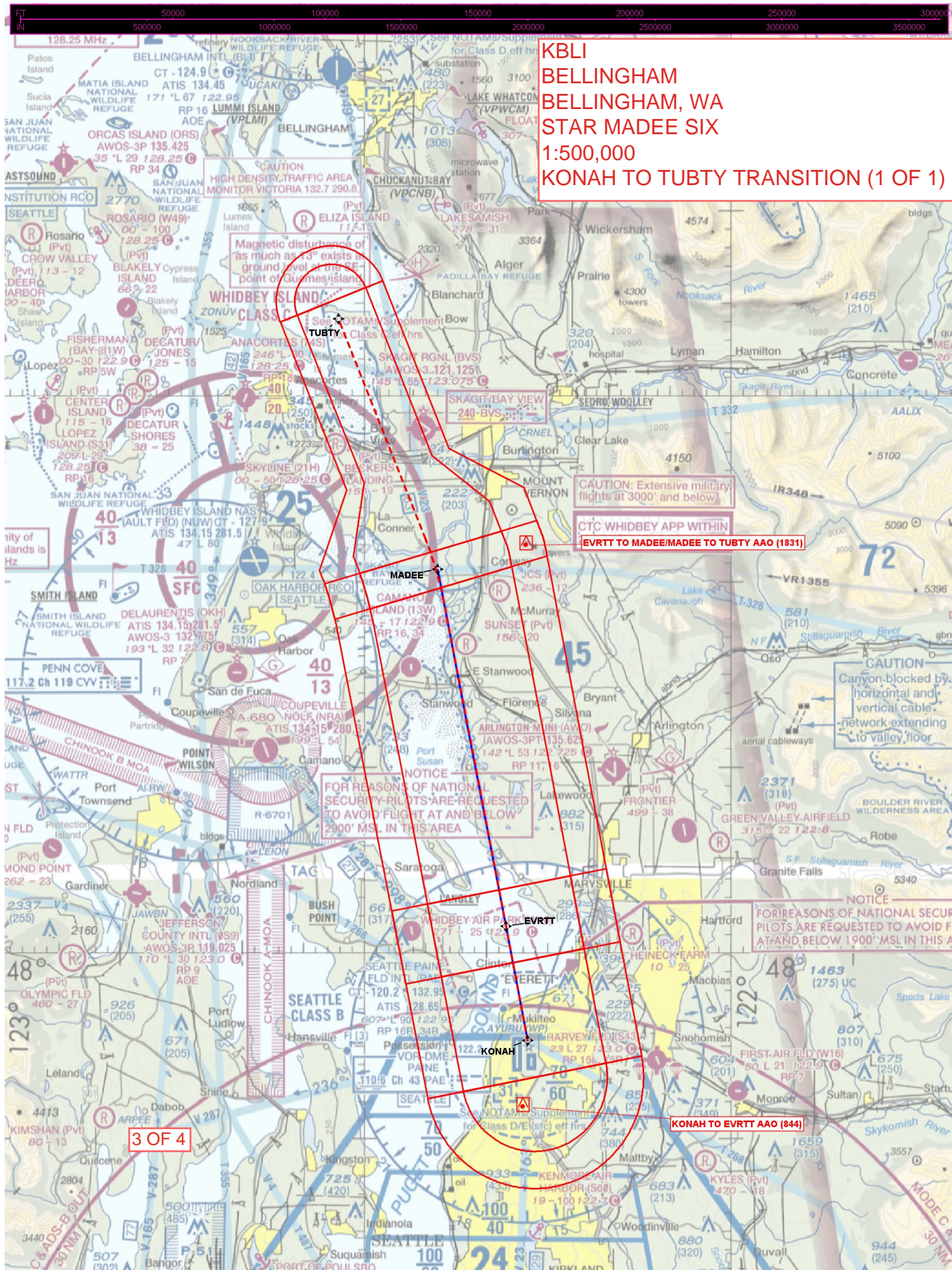
(MADEE.MADEE5) 05OCT23

NW-1, 20 MAR 2025 to 17 APR 2025

NW-1, 20 MAR 2025 to 17 APR 2025







FT 50000 100000 150000 200000 250000 300000
IN 50000 100000 150000 200000 250000 300000

KBLI
BELLINGHAM
BELLINGHAM, WA
STAR MADEE SIX
1:500,000
YAANO TO TECUV (LOST COMS)

