

DME DME Assessment Results for MADEE6 path KONAH_YAANO

Results Summary

Flyability:	Completed
DME/DME:	Completed - No Critical DMEs
Name:	David C-CTR Cook
Project File:	C:\Users\David C-CTR Cook\Documents\TARGETS WORK\DME-DME WORK\WSA HELP\KBLI MADEE6\20250429_MADEE6 (email).tgs
Output File:	C:\Users\David C-CTR Cook\Documents\TARGETS WORK\DME-DME WORK\WSA HELP\KBLI MADEE6\KBLI [IFPA] MADEE6 20250430_0624 EDT\KONAH_YAANO\KBLI MADEE6 RNAV STAR KONAH YAANO 20250430_0624 EDT.pdf
Procedure Name:	MADEE6
Software: DmeDmePlugin:	7.5.0
Date/Time:	04/30/2025 06:24 EDT
Databases:	MITRE 3DEP 3 arcsec

Failures

No Failures

Warnings

No Warnings

Informational

No Informational

Notes For Flight Check

None

Flight Plan

Name	Type	Lat/Lon	Altitude (ft)	VNAV Mode	Ground Speed (kts)	Turn Type	Leg Type
KONAH	WP	N47° 55' 17.8751", W122° 16' 41.9527"	10000	VNAV	270	FLY_BY	TF
EVRTT	WP	N48° 01' 28.2600", W122° 18' 28.9100"	10000	VNAV	200	FLY_BY	TF
MADEE	WP	N48° 20' 41.7000", W122° 24' 04.8100"	4000	VNAV	200	FLY_BY	TF
GERRD	WP	N48° 38' 32.5600", W122° 29' 20.4500"	4000	VNAV	200	FLY_BY	TF
UCAKI	WP	N48° 47' 33.4500", W122° 39' 48.8100"	4000	VNAV	200	FLY_BY	TF
YAANO	WP	N48° 53' 51.1500", W122° 39' 51.2200"	2000	VNAV	200	FLY_OVER	TF

Flyability

Flight Type:	RNAV_STAR
Selected Airport:	KBLI [IFPA]
Climb Gradient:	None assigned
Speeds:	200 Ground Speed to 11000 FT
	240 Ground Speed to 18000 FT
	260 Ground Speed to 24000 FT
	340 Ground Speed above 24000 FT
Descent During a Turn:	Allowed
VNAV Mode:	Flight Plan

DME DME Assessment Results for MADEE6 path KONAH_YAANO

DME/DME	
RNP:	RNP 2
Flight Mode:	Manual
Line of Sight (DTED Level 0 Max):	Evaluated
Inertial Drift:	Enabled
Initial Drift:	0.558 NM
INS Drift Rate:	8.0 NM/Hour
Range Mode:	OSV
RNP Edges:	Evaluated
Min DME Range:	3.0 NM
DME Types:	DME, VOR-DME, VORTAC, TACAN
DME Include Angles:	30 to 150
Critical DMEs:	Allowed
DoD Facilities:	Included
Foreign Facilities:	Included
High DMEs:	Included
Low DMEs:	Included
Terminal DMEs:	Included
Flight Check DMEs:	Not selected
Higher Altitudes:	Not Evaluated
Near Maximum Altitude:	Not Evaluated
Automatic ESVs:	Not enabled
Disabled DMEs:	None

DME/DME (Continued)										
DMEs Used										
#	Name	Lat/Lon	MAGVAR	Range	Type	Source	Critical	Status	Time	Distance
1	NUW	N48° 21' 17.7641", W122° 39' 42.4372"	18.0 E	130	H		NO	Enabled	69.9 %	70.7 %
2	OLM	N46° 58' 17.9000", W122° 54' 06.6000"	19.0 E	130	H		NO	Enabled	6.5 %	8.5 %
3	CVV	N48° 14' 40.9000", W122° 43' 27.9000"	19.0 E	130	DH		NO	Enabled	87.2 %	87.5 %
4	YVR	N49° 04' 38.3500", W123° 08' 56.6600"	17.0 E	130	H		NO	Enabled	30.8 %	30 %
5	PAE	N47° 55' 12.0312", W122° 16' 41.8197"	20.0 E	40	L		NO	Enabled	57.8 %	56.7 %
6	HUH	N48° 56' 43.0327", W122° 34' 45.3170"	20.0 E	130	H		NO	Enabled	48 %	46.7 %
7	TOU	N48° 17' 59.6370", W124° 37' 37.3560"	22.0 E	130	H		NO	Enabled	14.4 %	16.7 %
8	SEA	N47° 26' 07.3434", W122° 18' 34.6180"	19.0 E	130	H		NO	Enabled	15.6 %	17.8 %

DME DME Assessment Results for MADEE6 path KONA_H_YAANO

Flight Check DME Selection						
Distance [NM]	Selected DMEs					Alternate
0.0	OLM	CVV	TOU	SEA	NUW	
5.3	TOU	SEA	PAE	CVV	NUW	
10.1	CVV	SEA	PAE	NUW		
11.1	TOU	PAE	NUW			
11.3						
13.2	CVV	PAE				
21.4	CVV	PAE	NUW			
22.8	CVV	HUH	PAE	NUW		
32.7	NUW	HUH	PAE			
33.5	NUW	HUH	PAE	CVV		
35.4	CVV	PAE				
35.5	NUW	HUH	PAE	CVV		
36.1	NUW	PAE	CVV			
40.4	NUW	YVR	CVV	HUH		
43.1	NUW	YVR	CVV	PAE		
43.6	NUW	YVR	CVV			
44.1	NUW	YVR	CVV	PAE		
45.4	CVV	YVR	NUW			
45.8	CVV	YVR	NUW	HUH		
47.3	CVV	YVR	HUH			
47.8	CVV	YVR	NUW	HUH		
50.0	CVV	YVR	HUH			
51.6	CVV	YVR	NUW	HUH		
51.7	CVV	YVR	HUH			
51.8	CVV	YVR	NUW	HUH		
55.0	YVR	HUH	CVV			
55.5	YVR	HUH	CVV	NUW		
56.9	YVR	HUH	CVV			
57.2	YVR	HUH				
59.0						

Inertial Drift Segments			
#	Start Location	End Location	Length [NM]
1	N48° 06' 25.6379", W122° 19' 55.1020"	N48° 08' 13.4728", W122° 20' 26.4267"	1.8321
2	N48° 51' 05.4930", W122° 39' 50.1617"	N48° 53' 51.1500", W122° 39' 51.2200"	2.7631

Available DMEs by Waypoints			
Waypoint Before	Waypoint After	DME List	Suggested DMEs
KONAH	EVRTT	NUW, OLM, CVV, PAE, TOU, SEA	
EVRTT	MADEE	NUW, CVV, PAE, HUH, TOU, SEA	
MADEE	GERRD	NUW, CVV, YVR, PAE, HUH	
GERRD	UCAKI	NUW, CVV, YVR, PAE, HUH	
UCAKI	YAANO	NUW, CVV, YVR, HUH	

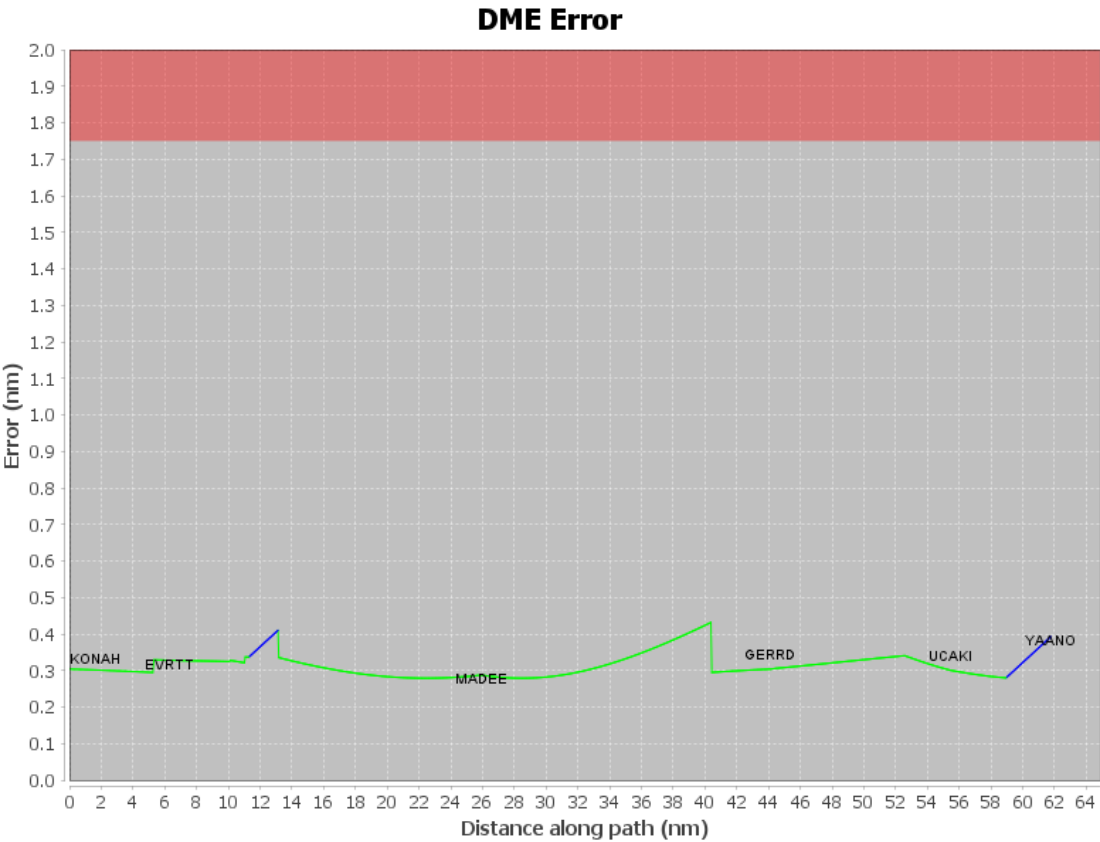
DME DME Assessment Results for MADEE6 path KONAH_YAANO

User Data Files

#	File Name
1	UserDMEs_KBLI MADEE4 STAR PAE TUBTY 20161004_1626.udt

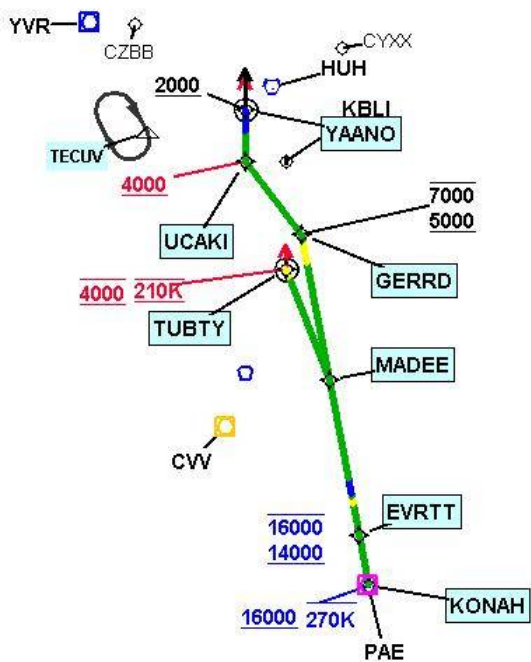
User DMEs

#	Name	Lat/Lon	MAGVAR	Range	Elevation [ft]	Frequency	Replaces	Status
1	TOU FAA 931238-11 TOU	N48° 17' 59.6370", W124° 37' 37.3560"	22.0 E	130	1650	112.2	TOU FAA 931238-11	
ESV:		Bearing [True]: 91.0° to 106.0° Bearing [Mag]: 69.0° to 84.0°				Arc Distance: Out to 101.0 NM Altitude: 7500.0 to 20000.0 ft		
2	OLM FAA 753036-23 OLM	N46° 58' 17.9000", W122° 54' 06.6000"	19.0 E	130	200	113.4	OLM FAA 753036-23	
ESV:		Bearing [True]: 16.0° to 29.0° Bearing [Mag]: 357.0° to 10.0°				Arc Distance: Out to 69.0 NM Altitude: 10000.0 to 16000.0 ft		
3	PAE FAA 910923-22 PAE	N47° 55' 12.0312", W122° 16' 41.8197"	20.0 E	40	678.6	110.6	PAE FAA 910923-22	
ESV:		Bearing [True]: 332.0° to 6.0° Bearing [Mag]: 312.0° to 346.0°				Arc Distance: Out to 57.0 NM Altitude: 3700.0 to 20000.0 ft		



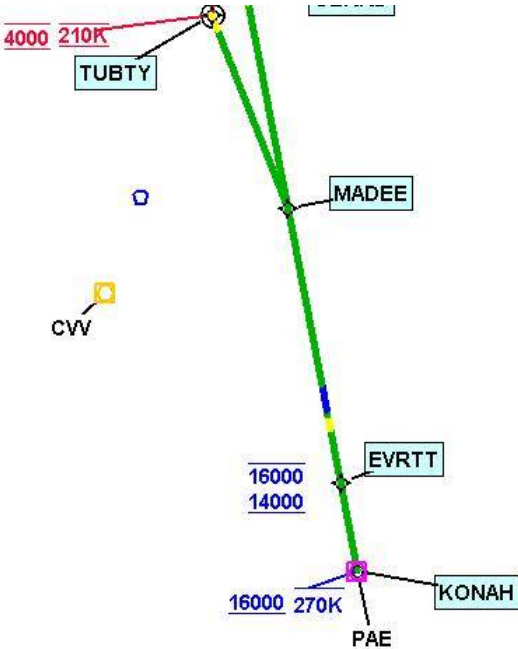
DME DME Assessment Results for MADEE6 path KONA_H_YAANO

Graphic Depiction 1



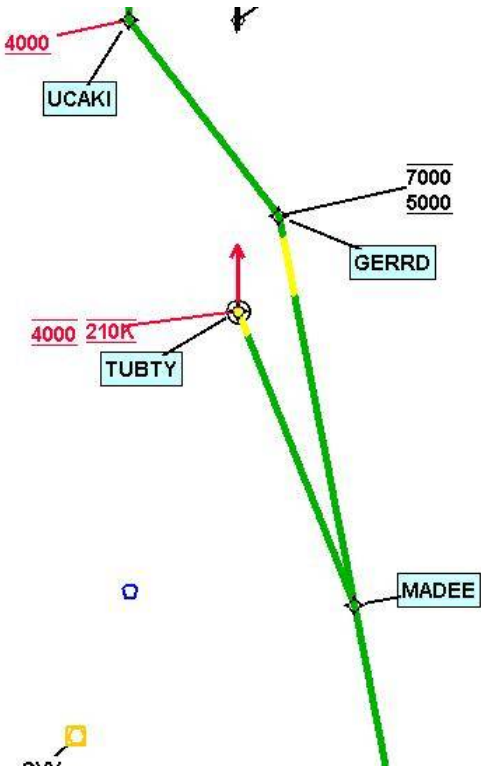
DME DME Assessment Results for MADEE6 path KONA_H_YAANO

Graphic Depiction 2



DME DME Assessment Results for MADEE6 path KONA_H_YAANO

Graphic Depiction 3



DME DME Assessment Results for MADEE6 path KONA_HYAANO

Graphic Depiction 4

