

| | | | | | |
|---|------------------------------|---|-------------------------------------|---|--|
| Flight Procedures Cover Page | Task Action: FLIGHT CHECK | Task Type: SID | Estimated Chart Date: 10/31/2024 | APWS Task ID: 14620BD318AD44A5B3E4FE17A4C43ACA | APWS Project ID: C17C81C1167941DE9CAF4CC4B8E9713A |
| Procedure: MYZNR THREE (RNAV) | | Enroute: YES | Specialist: Neidigh, Jon | | Agreement Number: |
| Airport ID: KBCT | | | Airport City: BOCA RATON | | State: FL |
| Facility ID: | Facility Type: | Flight Inspection Remark Type: New FC Slot | | | |
| <p>Procedure Comments:</p> <p>USED ACTIVE DATA AT KBCT</p> <p>AFS APPROVAL LETTER REQUESTS FOR NON-STANDARD CHART NOTE AND NON-STANDARD CLIMB GRADIENT.</p> <p>CONTACT CASIMIR TABAKA (405) 954-7931</p> <p>8/5/24: THIS IS AN UPDATED COPY OF THE FORM DEVELOPED ON 6/5/24.</p> <p>1. CHANGED DP ROUTE DESCRIPTION FROM "MAINTAIN ATC ASSIGNED ALTITUDE, EXPECT CLEARANCE TO FILED ALTITUDE WITHIN 10 MINUTES AFTER DEPARTURE." TO "DEPARTURES ON MATLK AND CHEFS TRANSITIONS MAINTAIN 12000; DEPARTURES ON WELLY TRANSITION MAINTAIN 10000. EXPECT CLEARANCE TO FILED ALTITUDE WITHIN 10 MINUTES AFTER DEPARTURE."</p> <p>2. CHANGED ADDITIONAL FLIGHT DATA NOTE FROM "CHART: TOP ALTITUDE: ASSIGNED BY ATC" TO "CHART: TOP ALTITUDE: MATLK AND CHEFS TRANSITIONS: 12000; WELLY TRANSITION: 10000."</p> <p>3. REPLACED APPROVAL LETTER WITH WAIVER REQUEST.</p> <p>9/3/24: THIS IS A CORRECTED COPY OF THE FORM APPROVED ON 8/30/24.</p> <p>1. CHANGED REMARK REFERENCING APPROVAL LETTER TO WAIVER LETTER.</p> <p>2. ADDED TAKEOFF MINIMUMS NOTE "ALL AIRCRAFT: CLIMB GRADIENTS: IF UNABLE TO ACCEPT CLIMB RATE ADVISE ATC PRIOR TO DEPARTURE"</p> <p><i>Digitally signed by</i> JOSEPH L ZEDER Sep 05, 2024</p> <p>9/13/24: THIS IS A CORRECTED COPY OF THE FORM APPROVED ON 8/30/24.</p> <p>1. CORRECTED MISSPELLING OF CHEFS TRANSITION IN RWY 23 DEPARTURE ROUTE DESCRIPTION.</p> <div><div>QUALITY 41 CHECKED</div><div>QUALITY 23 CHECKED</div></div> | | | | | |

| FIPC BASIC FORM | | | | | | | | |
|---|---|----------------------------------|--|-----------------------------------|--|--|--|----|
| PROCEDURE: SID MYZNR THREE (RNAV) | | | AIRPORT NAME: BOCA RATON | | AIRPORT ID: KBCT | SPECIAL CONTROL NO: AG-07-167-24 | | |
| FAC ID: MYZNR3 | | CITY: BOCA RATON | | | ST: FL | ORIG CHART DATE: 10/31/2024 | | |
| DFL TYPE: PROC/D | THIRD PARTY: <input type="checkbox"/> YES | EST. TIME ON SITE: 0.5 | REIMB. NUMBER: | | PTS TASK ID: 14620BD318AD44A5B3E4FE17A4C43ACA | | | |
| PREFLIGHT NOTES | | | | | | | | |
| REVIEWER: | | | | | DATE: | | | |
| COMMENTS: | | | | | CHECK ONE: <input type="checkbox"/> FLT CK REQ <input type="checkbox"/> NFCR <input type="checkbox"/> REJECT | | | |
| | | | | | | | YES | NO |
| | | | | | CPV COMPLETE? | | X | |
| PROCEDURE RESULTS | | | | | | | | |
| INSPECTION DATE: 08/29/2024 | CREW #: VN335 | N #: N73 | INSTRUMENT PROCEDURE STATUS: <input checked="" type="checkbox"/> SAT <input type="checkbox"/> SAT W/CHANGES <input type="checkbox"/> UNSAT | | | ARINC CODING: <input checked="" type="checkbox"/> SAT <input type="checkbox"/> SAT/GOLD <input type="checkbox"/> UNSAT | | |
| FLIGHT INSPECTOR SIGNATURE: george e searles @ 08/29/2024 17:54 | | | PRINTED NAME: SEARLES, GEORGE EDWARD | | | | NOTAM INITIATED? <input type="checkbox"/> YES <input checked="" type="checkbox"/> NO | |
| FLIGHT INSPECTOR REMARKS: | | | | | | | | |
| IN-FLIGHT OBSTACLE REPORT | | | | | | | | |
| OBSTRUCTION ID #: | COORDINATES OR LOCATION: | GNSS ALTITUDE (MSL): | | BAROMETRIC ALTITUDE (MSL): | | HEIGHT ABOVE GROUND LEVEL: | | |

1. FLIGHT PROCEDURE IDENTIFICATION:

BOCA RATON, FL
BOCA RATON AIRPORT (KBCT)
MYZNR (RNAV) SID

2. WAIVER REQUIRED AND APPLICABLE STANDARD:

Per FAA Order 8260.46J DEPARTURE PROCEDURE PROGRAM. CHARTING MINIMUM CLIMB GRADIENTS (CG) Para 2-1-1 (e). (3). (c). DO NOT CHART CGs THAT MAY BE NEEDED TO SUPPORT AIRSPACE, NAVIGATION SOLUTION, ENVIRONMENTAL, OR ATC OPERATIONAL LIMITATIONS.

3. REASON FOR WAIVER (JUSTIFICATION FOR NONSTANDARD TREATMENT):

THIS CLIMB GRADIENT IS NECESSARY DUE TO HIGH DENSITY TRAFFIC WHERE A SHORTENED ICA IS NEEDED TO ALLOW AIRCRAFT TO TURN SOONER. HISTORICALLY, AIRCRAFT HAVE NO PROBLEM MEETING THIS REQUIREMENT.

4. EQUIVALENT LEVEL OF SAFETY PROVIDED:

THE ATC CLIMB GRADIENT FOR EACH RWY WILL BE IN THE TAKEOFF MINIMUMS SECTION AND AN ADVISORY WILL BE IN THE DEPARTURE ROUTE DESCRIPTION. AIRCRAFT UNABLE TO COMPLY WITH THE PUBLISHED CLIMB GRADIENTS MAY NOTIFY ATC FOR AN ALTERNATE PLAN. THE PUBLISHED DEPARTURE ROUTE DESCRIPTION WILL CHART AS FOLLOWS:

ALL AIRCRAFT: CLIMB GRADIENTS: IF UNABLE TO ACCEPT CLIMB RATE, ADVISE ATC PRIOR TO DEPARTURE.
ALL RUNWAYS: 500FT/NM TO 520.

TAKEOFF RWY 05: CLIMB ON HEADING 049.34 TO 520, THEN ON HEADING 049.00, FOR VECTORS TO CROSS CAWFE AT OR ABOVE 6000, THENCE...

TAKEOFF RWY 23: CLIMB ON HEADING 229.35 TO 520, THEN ON HEADING 320.00, FOR VECTORS TO CROSS CAWFE AT OR ABOVE 6000, THENCE ...

...ON TRACK 305.04/6.00 TO CROSS JAVA A AT OR ABOVE 8000, THEN ON TRACK 296.75/5.13 TO CROSS CONAS AT OR BELOW 10000, THEN ON TRACK 296.16/4.35 TO CROSS MYZNR AT OR ABOVE 10000.

MAINTAIN ATC ASSIGNED ALTITUDE, EXPECT CLEARANCE TO FILED ALTITUDE WITHIN 10 MINUTES AFTER DEPARTURE.

5. ALTERNATIVE ACTIONS DEEMED NOT FEASIBLE:

DISCARDING THE INCREASED CG IN FAVOR OF A STANDARD CLIMB WAS CONSIDERED. HOWEVER, DUE TO THE HIGH DENSITY OF AIR TRAFFIC WITHIN THE PALM BEACH APPROACH AND SOUTH FLORIDA COMPLEX AIRSPACE, IT WAS DETERMINED THE RISK OF REQUIRED ADDITIONAL CONTROLLER TRANSMISSIONS AND DISRUPTION OF TRAFFIC FLOW AS BEING TOO GREAT AND INTRODUCED UNNECESSARY SAFETY RISK INTO THE SYSTEM.

CURRENTLY THE MYZNR (RNAV) SID HAS THESE MINIMUMS CHARTED AND THE FLYING COMMUNITY HAS HAD NO ADVERSE EFFECTS OR PROBLEMS MEETING THEM. THEREFORE, KBCT IS REQUESTING APPROVAL TO PUBLISH THE NON-STANDARD CLIMB GRADIENTS AS THE TAKEOFF MINIMUMS FOR RWYs: 5, 23.

6. COORDINATION WITH USER ORGANIZATIONS (SPECIFY):

EASTERN SERVICE AREAPBN FAA AND NATCA LEADS.
KBCT ATCT
PALM BEACH APPROACH CONTROL

7. SUBMITTED BY:

| DATE | OFFICE IDENTIFICATION | TITLE |
|------------|-----------------------|---------|
| 07/30/2024 | AJV-A430 | MANAGER |

SIGNATURE

Digitally signed by

JOSEPH L ZEDER

Jul 30, 2024

8. AFS ACTIONS:

☐ APPROVED ☐ DISAPPROVED ☐ NOT REQUIRED

COMMENTS:

| DATE | ROUTING SYMBOL | SIGNATURE |
|------|----------------|-----------|
|------|----------------|-----------|

INFORMATION ONLY



Federal Aviation Administration

Memorandum

Date: November 1, 2023

To: Christopher Hope, Manager, Flight Technologies and Procedures Division
THRU: Romana Wolf, Manager, Flight Procedures and Airspace Group

From: Bev Bordy, Manager, Instrument Flight Procedures Coordination Team, AJV-A430

Prepared by: Mark J. Dillon, Sr. ATC Specialist, NAVTAC CTR Support

Subject: Approval Request: Boca Raton, FL (KBCT)
MYZNR (RNAV) SID
Non-standard Chart Notes

FAAO 8260.46J para 2-1-1e(9). When ATC has determined that they do not want pilots to “Flight Plan” or file a particular SID (i.e., use will be determined by ATC), ATC will request that a chart note be placed on the SID. In the “Procedural Data Notes” section of Form 8260-15B, use: “Chart Note: Do Not File – To Be Assigned by ATC.”

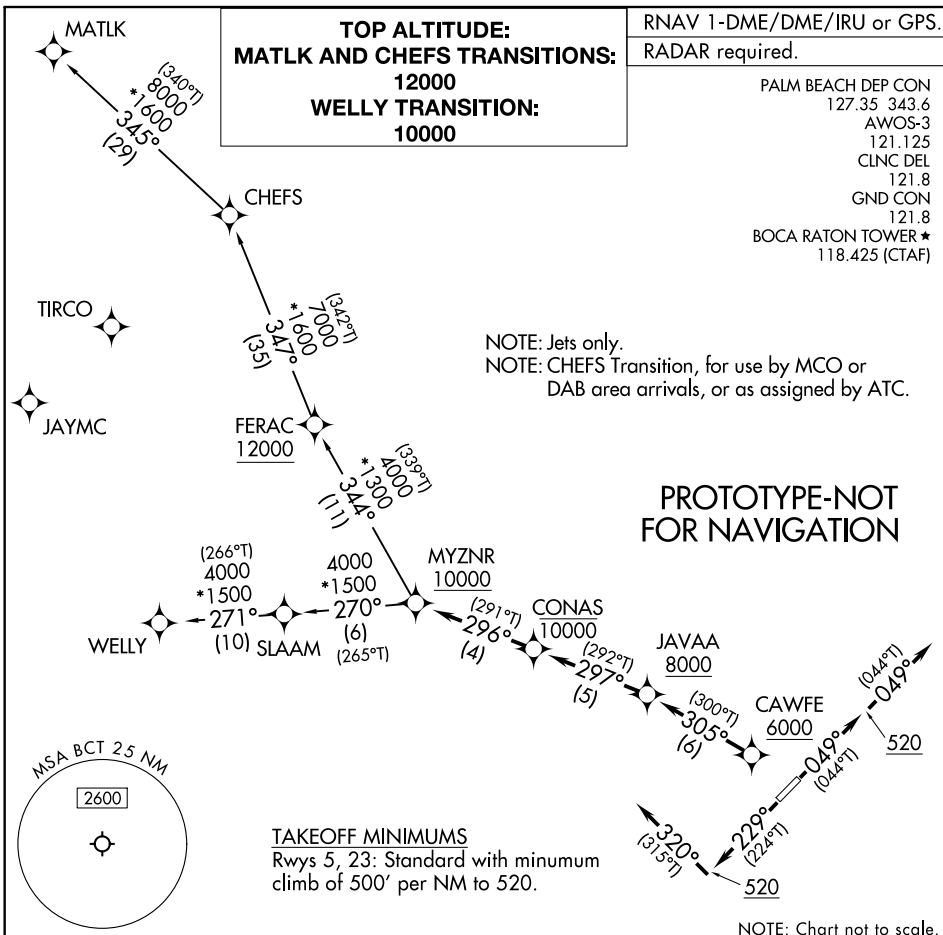
ATC requests to use the following Graphic Notes:

“NOTE: CHEFS Transition, for use by MCO or DAB area arrivals, or as assigned by ATC.”

This is to support ATC assigned transitions which are required to prevent users from filing Flight Plans that are non- standard or incompatible routing for departures from Boca Raton through the Orlando and Daytona Beach areas. These ATC assigned transitions will be Data Comm, ERAM, and FMC compliant to allow users to utilize these routes when necessary.

(MYZNR3.MYZNR) FIG AL-560 (FAA)
MYZNR THREE DEPARTURE (RNAV)

AL-560 (FAA)

BOCA RATON (BCT)
BOCA RATON, FLORIDA

DEPARTURE ROUTE DESCRIPTION

TAKEOFF RUNWAY 5: Climb on heading 049° to 520, then on heading 049° or as assigned by ATC, for vectors to cross CAWFE at or above 6000, thence . . .

TAKEOFF RUNWAY 23: Climb on heading 229° to 520, then on heading 320° or as assigned by ATC, for vectors to cross CAWFE at or above 6000, thence . . .

. . . on track 305° to cross JAVA A at or above 8000, then on track 297° to cross CONAS at or below 10000, then on track 296° to cross MYZNR at or above 10000. Departures on MATLK and CHEFS transitions maintain 12000; Departures on WELLY transition maintain 10000. Expect clearance to filed altitude within 10 minutes after departure.

CHEFS TRANSITION (MYZNR3.CHEFS)

MATLK TRANSITION (MYZNR3.MATLK)

WELLY TRANSITION (MYZNR3.WELLY)

MYZNR THREE DEPARTURE (RNAV)
(MYZNR3.MYZNR) FIG

BOCA RATON, FLORIDA
BOCA RATON (BCT)

(MYZNR2.MYZNR) 22139

MYZNR TWO DEPARTURE (RNAV)

OLD

AL-560 (FAA)

BOCA RATON (BCT)
BOCA RATON, FLORIDA

AWOS-3
121.125
CLNC DEL
121.8
GND CON
121.8
BOCA RATON TOWER ★
118.425 (CTAF)
PALM BEACH DEP CON
127.35 343.6

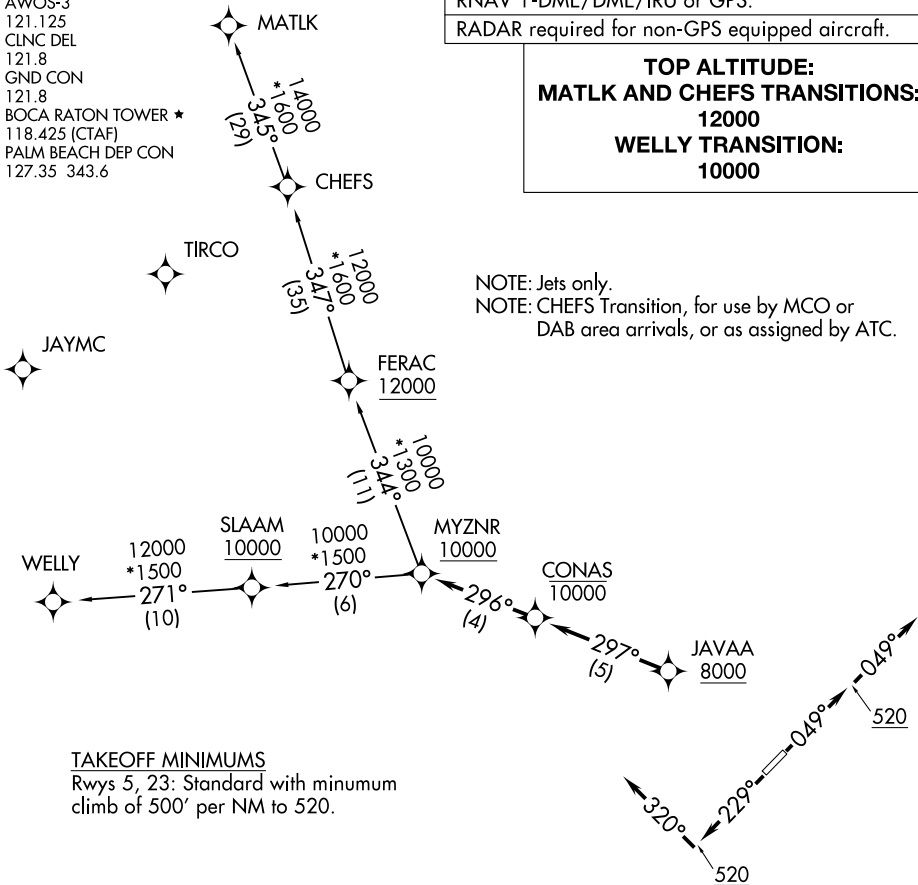
RNAV 1-DME/DME/IRU or GPS.

RADAR required for non-GPS equipped aircraft.

TOP ALTITUDE:
MATLK AND CHEFS TRANSITIONS:
12000
WELLY TRANSITION:
10000

NOTE: Jets only.

NOTE: CHEFS Transition, for use by MCO or
DAB area arrivals, or as assigned by ATC.



DEPARTURE ROUTE DESCRIPTION

TAKEOFF RUNWAY 5: Climb on heading 049° to 520, then on heading 049° or as assigned by ATC, for vectors to cross JAVAA at or above 8000, thence. . .

TAKEOFF RUNWAY 23: Climb on heading 229° to 520, then on heading 320° or as assigned by ATC, for vectors to cross JAVAA at or above 8000, thence. . .

. . . on track 297° to cross CONAS at or below 10000, then on track 296° to cross MYZNR at or above 10000. Maintain ATC assigned altitude, expect clearance to filed altitude within 10 minutes after departure.

CHEFS TRANSITION (MYZNR2.CHEFS)

MATLK TRANSITION (MYZNR2.MATLK)

WELLY TRANSITION (MYZNR2.WELLY)

MYZNR TWO DEPARTURE (RNAV)
(MYZNR2.MYZNR) 19MAY22

BOCA RATON, FLORIDA
BOCA RATON (BCT)

SE-3, 21 MAR 2024 to 18 APR 2024

KBCT, BOCA RATON
BOCA RATON, FL
MYZNR THREE (RNAV) SID
WELLY TRANSITION
CHEFS/MATLK TRANSITIONS (MYZNR TO CHEFS)
1:500,000

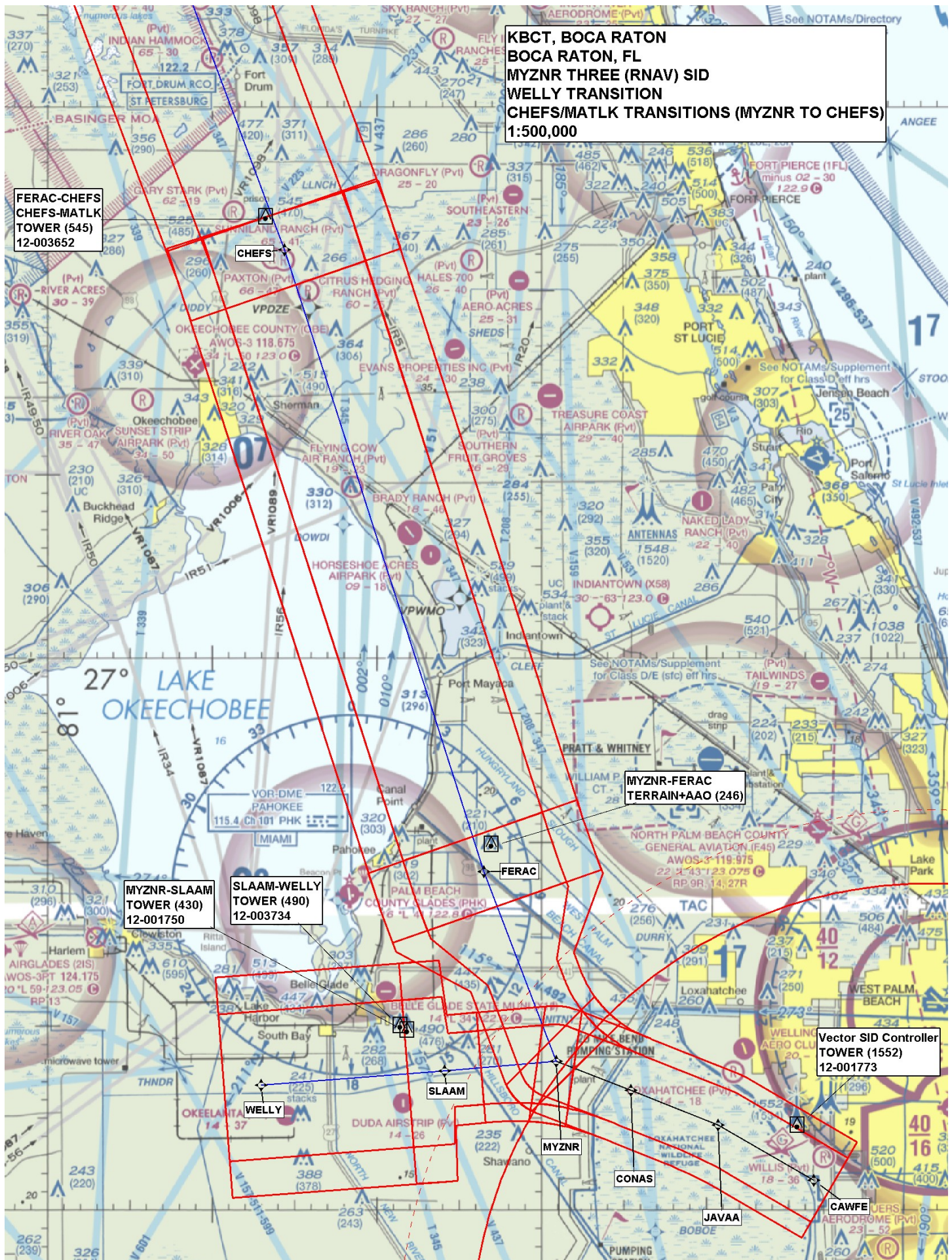
FERAC-CHEFS
CHEFS-MATLK
TOWER (545)
12-003652

MYZNR-FERAC
TERRAIN+AAO (246)

MYZNR-SLAAM
TOWER (430)
12-001750

SLAAM-WELLY
TOWER (490)
12-003734

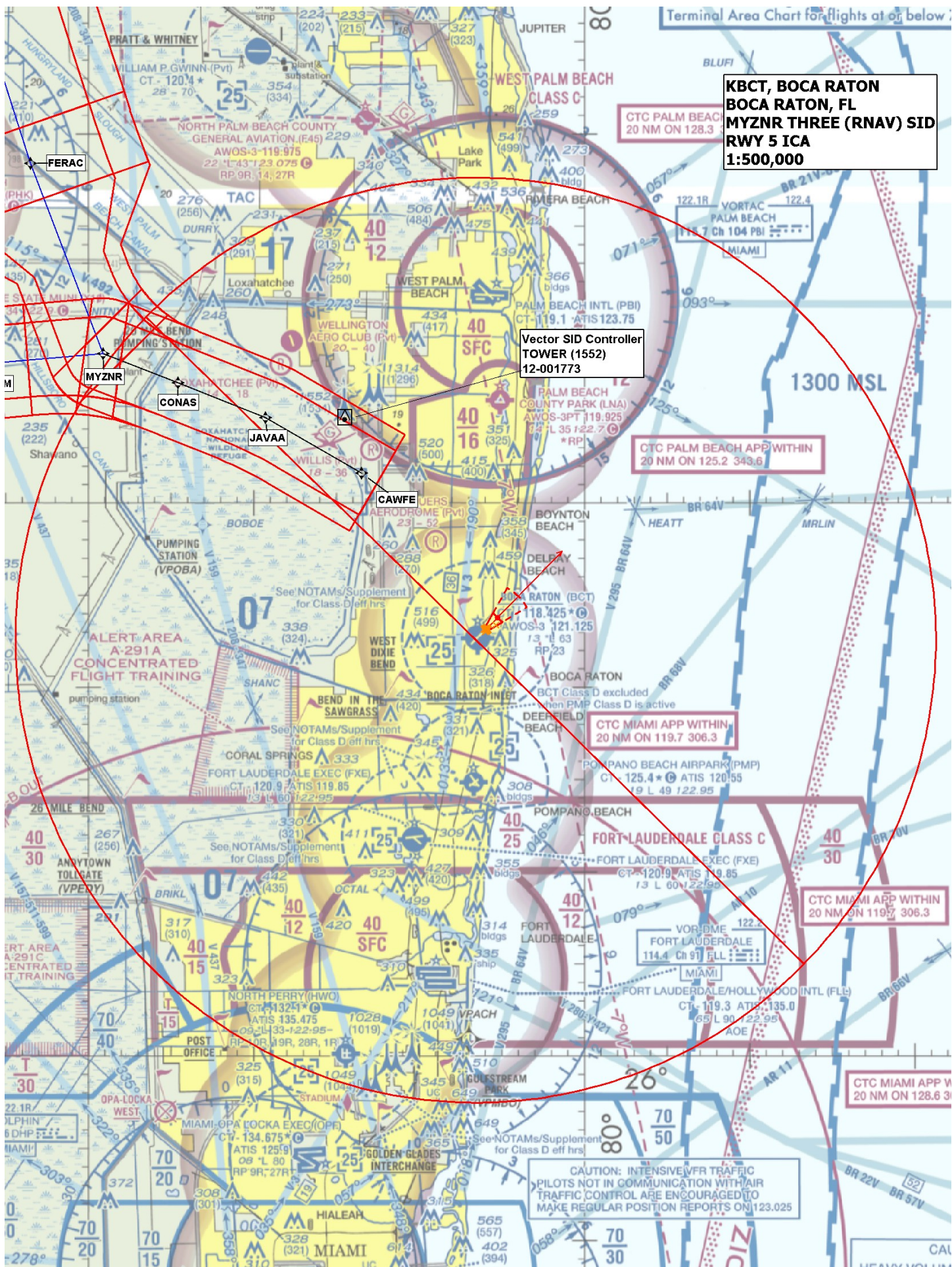
Vector SID Controller
TOWER (1552)
12-001773

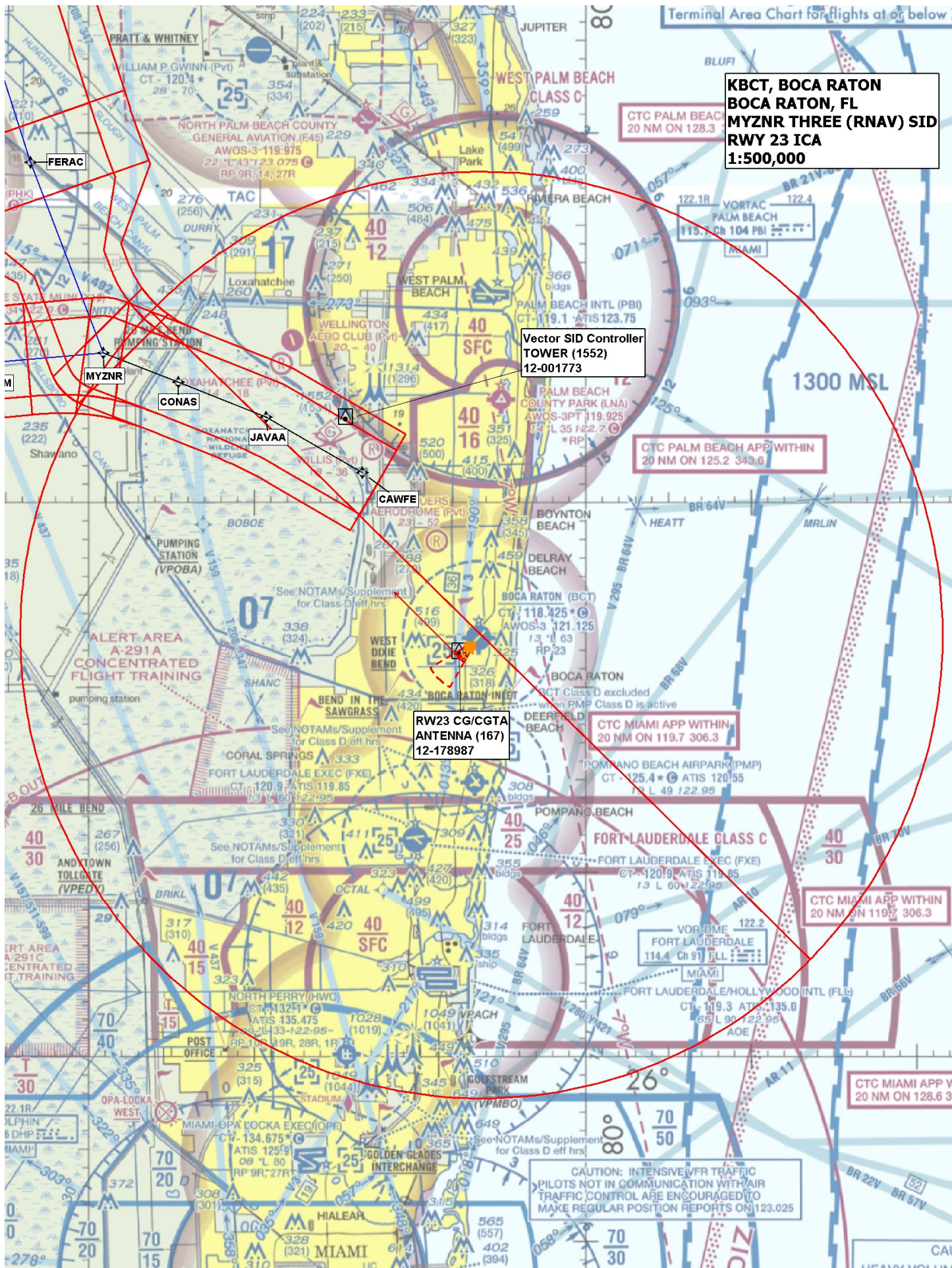


**KBCT, BOCA RATON
BOCA RATON, FL
MYZNR THREE (RNAV) SID
MATLK TRANSITION (CHEFS TO MATLK)
1:500,000**

FERAC-CHEFS
CHEFS-MATLK
TOWER (545)
12-003652

CHEFS



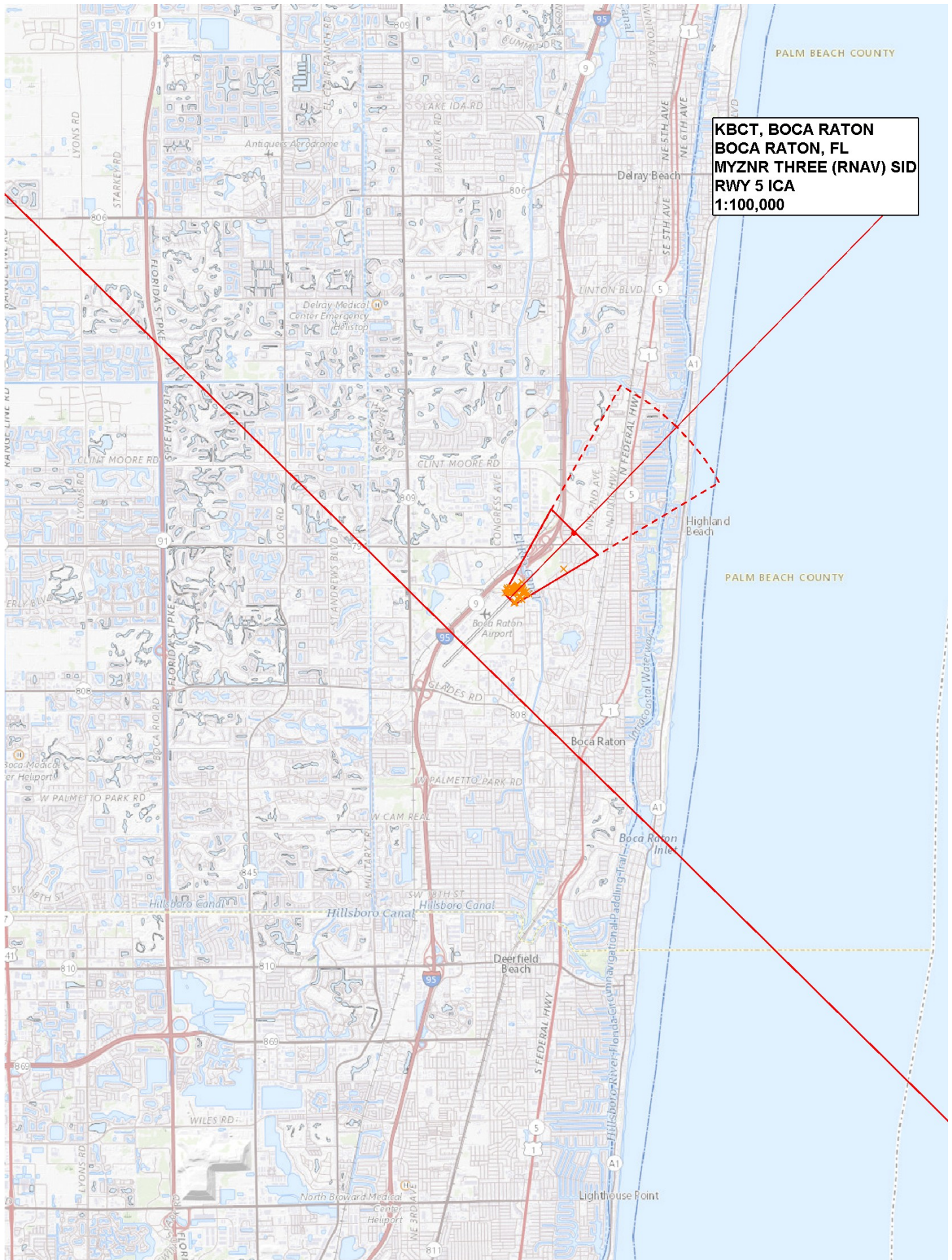


KBCT, BOCA RATON
BOCA RATON, FL
MYZNR THREE (RNAV) SID
RWY 23 ICA
1:500,000

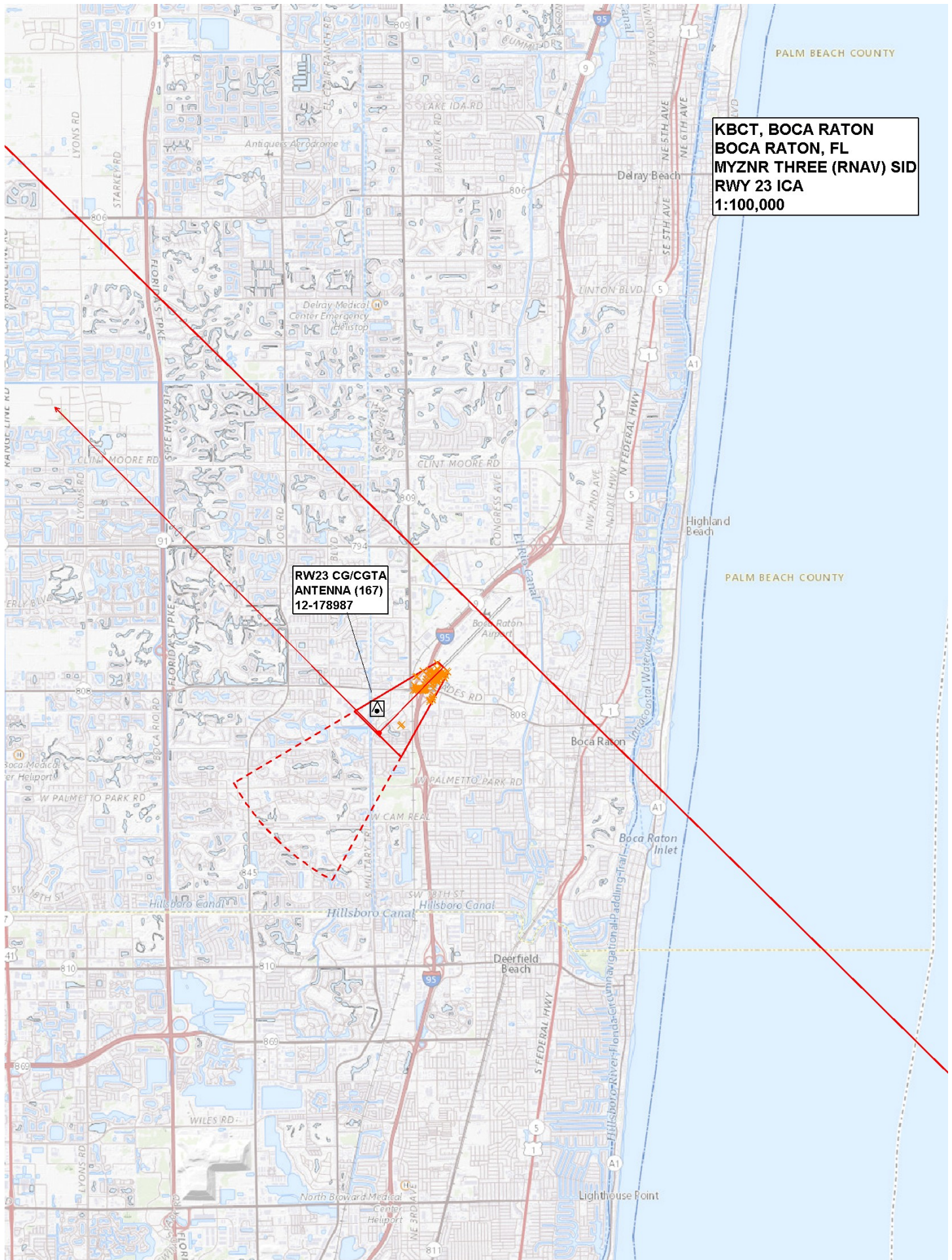
Vector SID Controller
TOWER (1552)
12-001773

RW23 CG/CGTA
ANTENNA (167)
12-178987

CAUTION: INTENSIVE VFR TRAFFIC
PILOTS NOT IN COMMUNICATION WITH AIR
TRAFFIC CONTROL ARE ENCOURAGED TO
MAKE REGULAR POSITION REPORTS ON 123.025



**KBCT, BOCA RATON
BOCA RATON, FL
MYZNR THREE (RNAV) SID
RWY 5 ICA
1:100,000**



**KBCT, BOCA RATON
BOCA RATON, FL
MYZNR THREE (RNAV) SID
RWY 23 ICA
1:100,000**

**RW23 CG/CGTA
ANTENNA (167)
12-178987**