

DME DME Assessment Results for MYZNR3 path CAWFE\_MATLK

Results Summary	
Flyability:	Completed
DME/DME:	Completed - No Critical DMEs
Name:	Erik J-CTR John
Project File:	C:\Users\Erik J-CTR John\OneDrive - Federal Aviation Administration\Desktop\PROJECT FILES\DillonWork\KBCT MYZNR3 DME WORK\KBCT MYZNR3 (RNAV) SID DME 26 FEB 2024.tgs
Output File:	C:\Users\Erik J-CTR John\OneDrive - Federal Aviation Administration\Desktop\PROJECT FILES\DillonWork\KBCT MYZNR3 DME WORK\DME\KBCT [IFPA] MYZNR3 20240226_1001 EST\CAWFE_MATLK\KBCT MYZNR3 SID CAWFE MATLK 20240226_1001 EST.pdf
Procedure Name:	MYZNR3
Software: DmeDmePlugin:	7.2.1
Date/Time:	02/26/2024 10:01 EST
Databases:	MITRE 3DEP 3 arcsec

Failures
No Failures

Warnings
No Warnings

Informational
No Informational

Notes For Flight Check
None

Flight Plan							
Name	Type	Lat/Lon	Altitude (ft)	VNAV Mode	Ground Speed (kts)	Turn Type	Leg Type
CAWFE	WP	N26° 31' 37.21", W080° 13' 31.17"	3000	VNAV	200	FLY_BY	TF
JAVAA	WP	N26° 34' 37.85", W080° 19' 18.77"	3000	VNAV	200	FLY_BY	TF
CONAS	WP	N26° 36' 32.16", W080° 24' 37.76"	3000	VNAV	200	FLY_BY	TF
MYZNR	WP	N26° 38' 06.61", W080° 29' 09.44"	4000	VNAV	200	FLY_BY	TF
FERAC	WP	N26° 48' 25.17", W080° 33' 31.81"	4000	VNAV	200	FLY_BY	TF
CHEFS	WP	N27° 22' 14.97", W080° 45' 38.96"	7000	VNAV	200	FLY_BY	TF
MATLK	WP	N27° 49' 36.54", W080° 57' 04.27"	8000	VNAV	200	FLY_BY	TF

Flyability	
Flight Type:	SID
Selected Airport:	KBCT [IFPA]
Climb Gradient:	None assigned
Speeds:	130 at the Runway DER
	145 at the end of the VA or VI leg
	200 Ground Speed to 11000 FT
	240 Ground Speed to 18000 FT
	260 Ground Speed to 24000 FT
	340 Ground Speed above 24000 FT
Descent During a Turn:	Allowed
VNAV Mode:	Flight Plan

## DME DME Assessment Results for MYZNR3 path CAWFE\_MATLK

DME/DME	
RNP:	RNP 2
Flight Mode:	Manual
Line of Sight (DTED Level 0 Max):	Evaluated
Inertial Drift:	Enabled
Initial Drift:	0.558 NM
INS Drift Rate:	8.0 NM/Hour
Range Mode:	OSV
RNP Edges:	Evaluated
Min DME Range:	3.0 NM
DME Types:	DME, VOR-DME, VORTAC, TACAN
DME Include Angles:	30 to 150
Critical DMEs:	Not Allowed
DoD Facilities:	Not included
Foreign Facilities:	Not included
High DMEs:	Included
Low DMEs:	Included
Terminal DMEs:	Included
Flight Check DMEs:	Not selected
Higher Altitudes:	Not Evaluated
Near Maximum Altitude:	Not Evaluated
Automatic ESVs:	Not enabled
Disabled DMEs:	None

DME/DME (Continued)										
DMEs Used										
#	Name	Lat/Lon	MAGVAR	Range	Type	Source	Critical	Status	Time	Distance
1	PHK	N26° 46' 57.87", W080° 41' 29.16"	0.0 E	130	H	IFPA	NO	Enabled	36.1 %	36.1 %
2	SRQ	N27° 24' 25.26", W082° 33' 49.18"	5.0 W	130	DH	IFPA	NO	Enabled	16.7 %	16.7 %
3	TRV	N27° 40' 42.26", W080° 29' 23.04"	7.0 W	130	H	IFPA	NO	Enabled	32.6 %	32.6 %
4	VKZ	N25° 45' 06.85", W080° 09' 16.00"	4.0 W	130	DH	IFPA	NO	Enabled	32.5 %	32.4 %
5	MLB	N28° 06' 19.12", W080° 38' 06.46"	7.0 W	130	DH	IFPA	NO	Enabled	40.6 %	40.6 %
6	FLL	N26° 04' 26.18", W080° 09' 59.19"	6.0 W	130	H	IFPA	NO	Enabled	17.7 %	17.7 %
7	PBI	N26° 40' 48.20", W080° 05' 11.36"	3.0 W	130	H	IFPA	NO	Enabled	46.2 %	46.2 %

Flight Check DME Selection						
Distance [NM]	Selected DMEs					Alternate
0.0	PHK	PBI	VKZ	FLL		
9.2	FLL	PBI	VKZ			
14.7	VKZ	PBI				
15.5	VKZ	PBI	FLL	PHK		
15.6	VKZ	PBI	FLL			
17.1	VKZ	PBI				
22.6	VKZ	PBI	PHK			
29.6	PHK	PBI				
33.1	PHK	PBI	MLB			
42.1						
61.4	TRV	PHK				
63.0	TRV	PHK	MLB			
65.5	TRV	MLB				
74.5	SRQ	MLB	TRV			
89.2	TRV	MLB				
90.6	TRV	MLB	SRQ			

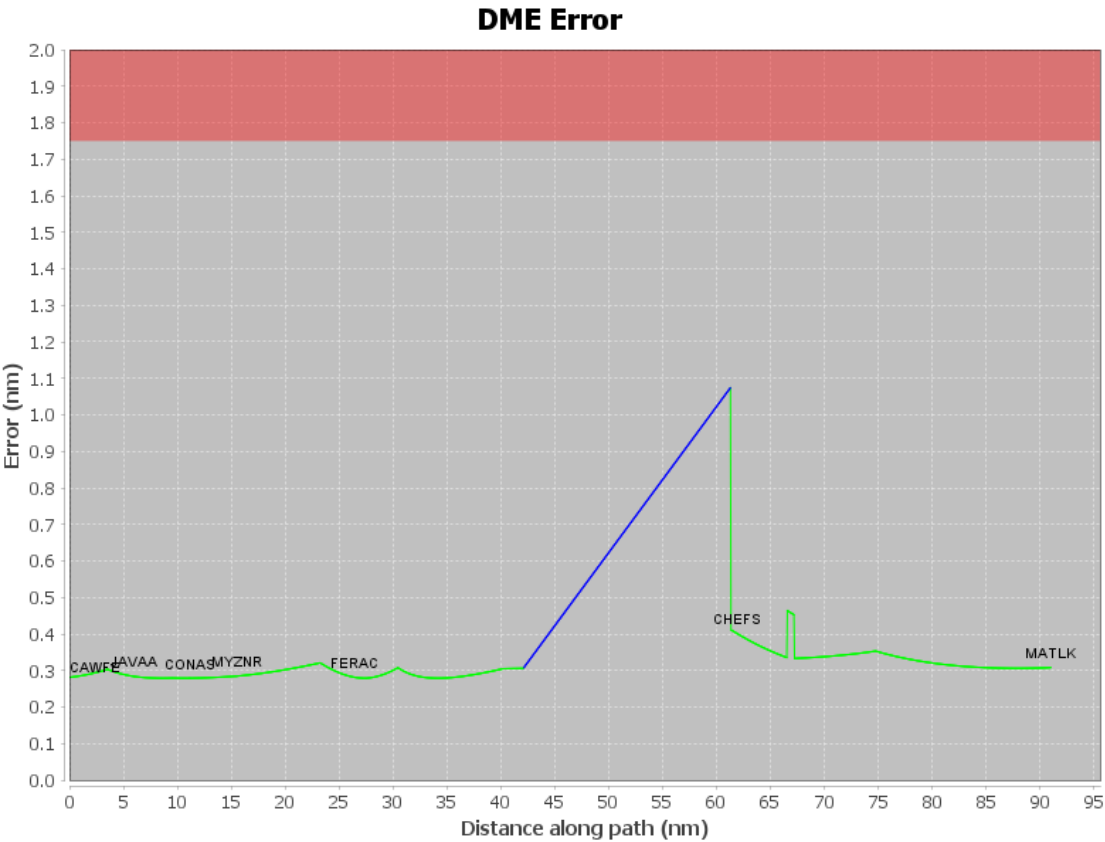
DME DME Assessment Results for MYZNR3 path CAWFE\_MATLK

Inertial Drift Segments			
#	Start Location	End Location	Length [NM]
1	N27° 03' 22.50", W080° 38' 52.32"	N27° 21' 43.16", W080° 45' 27.51"	19.2121

Available DMEs by Waypoints			
Waypoint Before	Waypoint After	DME List	Suggested DMEs
CAWFE	JAVAA	PHK, VKZ, PBI, FLL	
JAVAA	CONAS	PHK, VKZ, PBI, FLL	
CONAS	MYZNR	VKZ, PBI, FLL	
MYZNR	FERAC	PHK, VKZ, PBI, FLL	
FERAC	CHEFS	PHK, MLB, VKZ, PBI, TRV	
CHEFS	MATLK	PHK, MLB, SRQ, TRV	

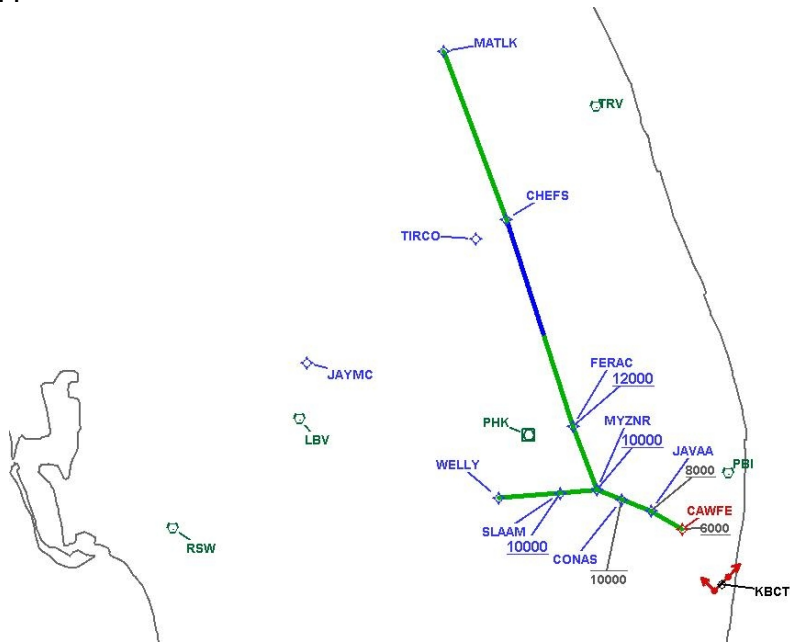
User Data Files								
#	File Name							
None								
User DMEs								
#	Name	Lat/Lon	MAGVAR	Range	Elevation [ft]	Frequency	Replaces	Status
None								

DME DME Assessment Results for MYZNR3 path CAWFE\_MATLK



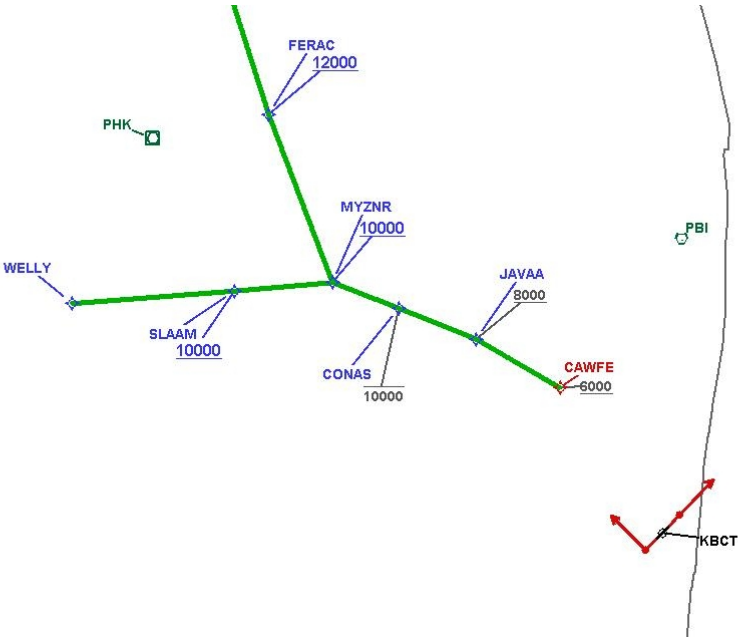
DME DME Assessment Results for MYZNR3 path CAWFE\_MATLK

Graphic Depiction 1



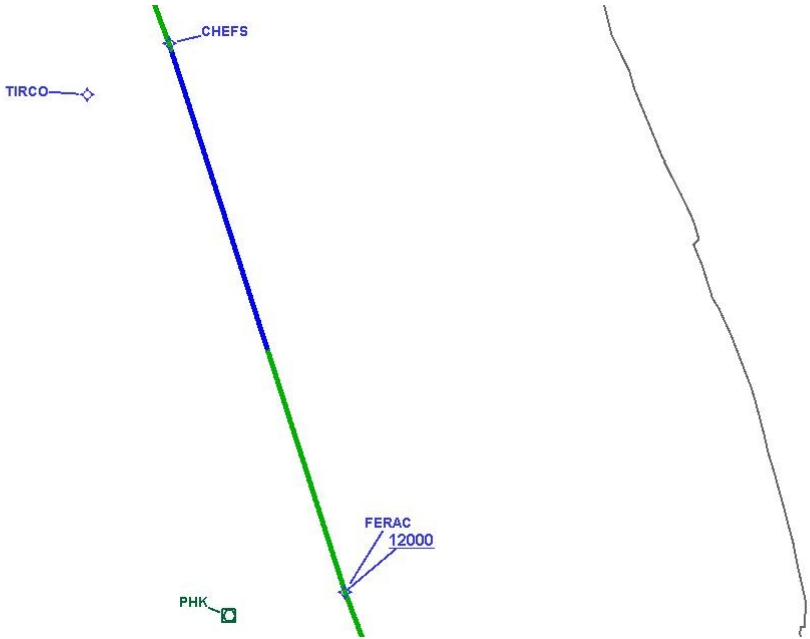
DME DME Assessment Results for MYZNR3 path CAWFE\_MATLK

Graphic Depiction 2



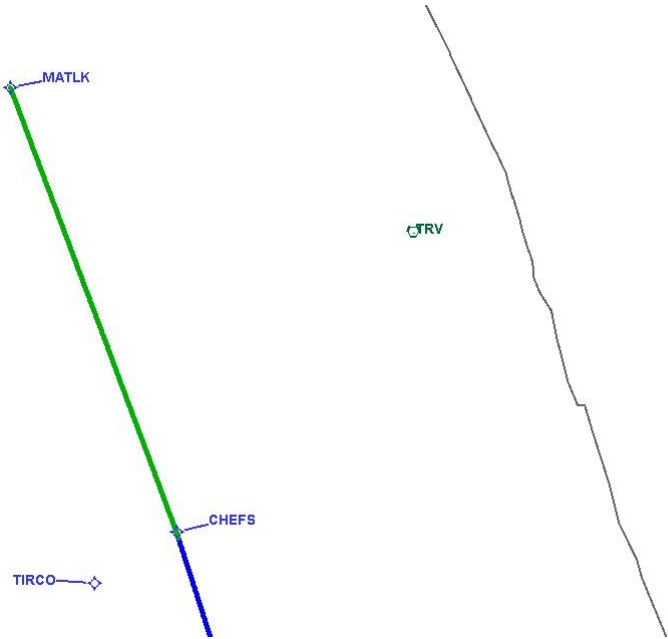
DME DME Assessment Results for MYZNR3 path CAWFE\_MATLK

Graphic Depiction 3



DME DME Assessment Results for MYZNR3 path CAWFE\_MATLK

Graphic Depiction 4





## DME DME Assessment Results for MYZNR3 path MYZNR\_WELLY

### Results Summary

Flyability:	Completed
DME/DME:	Completed - No Critical DMEs
Name:	Erik J-CTR John
Project File:	C:\Users\Erik J-CTR John\OneDrive - Federal Aviation Administration\Desktop\PROJECT FILES\DillonWork\KBCT MYZNR3 DME WORK\KBCT MYZNR3 (RNAV) SID DME 26 FEB 2024.tgs
Output File:	C:\Users\Erik J-CTR John\OneDrive - Federal Aviation Administration\Desktop\PROJECT FILES\DillonWork\KBCT MYZNR3 DME WORK\DME\KBCT [IFPA] MYZNR3 20240226_1001 EST\MYZNR_WELLY\KBCT MYZNR3 SID MYZNR WELLY 20240226_1001 EST.pdf
Procedure Name:	MYZNR3
Software: DmeDmePlugin:	7.2.1
Date/Time:	02/26/2024 10:01 EST
Databases:	MITRE 3DEP 3 arcsec

### Failures

No Failures

### Warnings

No Warnings

### Informational

No Informational

### Notes For Flight Check

None

### Flight Plan

Name	Type	Lat/Lon	Altitude (ft)	VNAV Mode	Ground Speed (kts)	Turn Type	Leg Type
MYZNR	WP	N26° 38' 06.61", W080° 29' 09.44"	4000	VNAV	200	FLY_BY	TF
SLAAM	WP	N26° 37' 35.14", W080° 35' 55.77"	4000	VNAV	200	FLY_BY	TF
WELLY	WP	N26° 36' 48.98", W080° 47' 03.93"	4000	VNAV	200	FLY_BY	TF

### Flyability

Flight Type:	SID
Selected Airport:	KBCT [IFPA]
Climb Gradient:	None assigned
Speeds:	130 at the Runway DER
	145 at the end of the VA or VI leg
	200 Ground Speed to 11000 FT
	240 Ground Speed to 18000 FT
	260 Ground Speed to 24000 FT
	340 Ground Speed above 24000 FT
Descent During a Turn:	Allowed
VNAV Mode:	Flight Plan

## DME DME Assessment Results for MYZNR3 path MYZNR\_WELLY

DME/DME	
RNP:	RNP 2
Flight Mode:	Manual
Line of Sight (DTED Level 0 Max):	Evaluated
Inertial Drift:	Enabled
Initial Drift:	0.558 NM
INS Drift Rate:	8.0 NM/Hour
Range Mode:	OSV
RNP Edges:	Evaluated
Min DME Range:	3.0 NM
DME Types:	DME, VOR-DME, VORTAC, TACAN
DME Include Angles:	30 to 150
Critical DMEs:	Not Allowed
DoD Facilities:	Not included
Foreign Facilities:	Not included
High DMEs:	Included
Low DMEs:	Included
Terminal DMEs:	Included
Flight Check DMEs:	Not selected
Higher Altitudes:	Not Evaluated
Near Maximum Altitude:	Not Evaluated
Automatic ESVs:	Not enabled
Disabled DMEs:	None

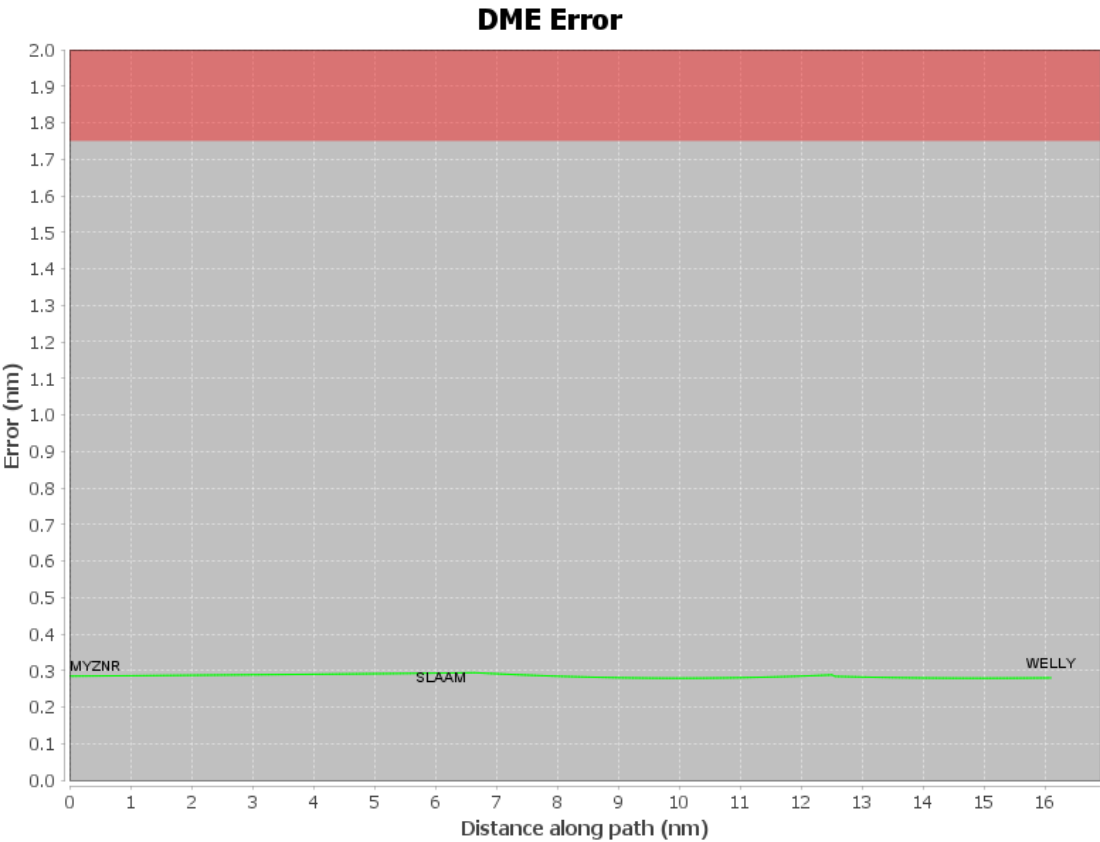
DME/DME (Continued)										
DMEs Used										
#	Name	Lat/Lon	MAGVAR	Range	Type	Source	Critical	Status	Time	Distance
1	PHK	N26° 46' 57.87", W080° 41' 29.16"	0.0 E	130	H	IFPA	NO	Enabled	83.1 %	83.1 %
2	VKZ	N25° 45' 06.85", W080° 09' 16.00"	4.0 W	130	DH	IFPA	NO	Enabled	100 %	100 %
3	LBV	N26° 49' 41.47", W081° 23' 29.18"	1.0 E	40	L	IFPA	NO	Enabled	22 %	22 %
4	PBI	N26° 40' 48.20", W080° 05' 11.36"	3.0 W	130	H	IFPA	NO	Enabled	100 %	100 %

Flight Check DME Selection						
Distance [NM]	Selected DMEs					Alternate
0.0	VKZ	PBI				
2.7	VKZ	PBI	PHK			
12.6	LBV	PHK	PBI	VKZ		

Inertial Drift Segments			
#	Start Location	End Location	Length [NM]

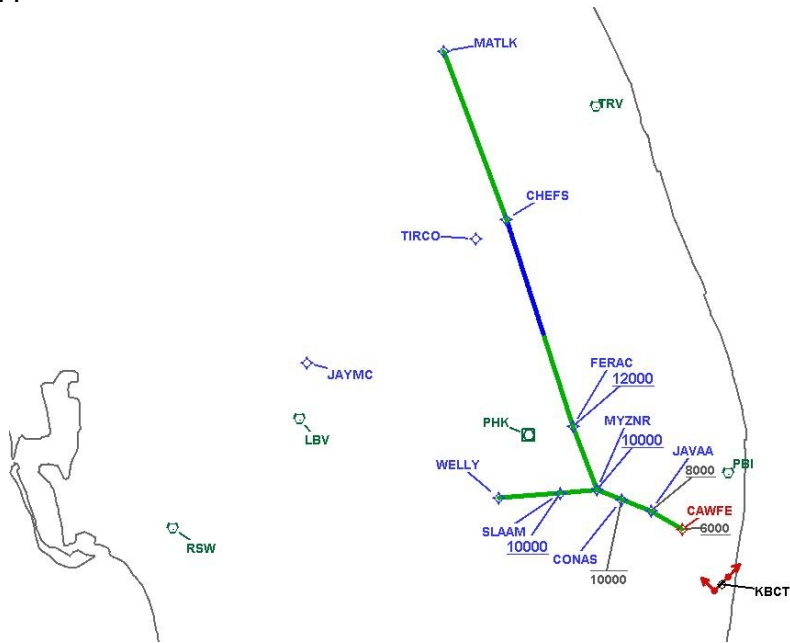
Available DMEs by Waypoints			
Waypoint Before	Waypoint After	DME List	Suggested DMEs
MYZNR	SLAAM	PHK, VKZ, PBI	
SLAAM	WELLY	LBV, PHK, VKZ, PBI	

User Data Files								
#	File Name							
None								
User DMEs								
#	Name	Lat/Lon	MAGVAR	Range	Elevation [ft]	Frequency	Replaces	Status
None								



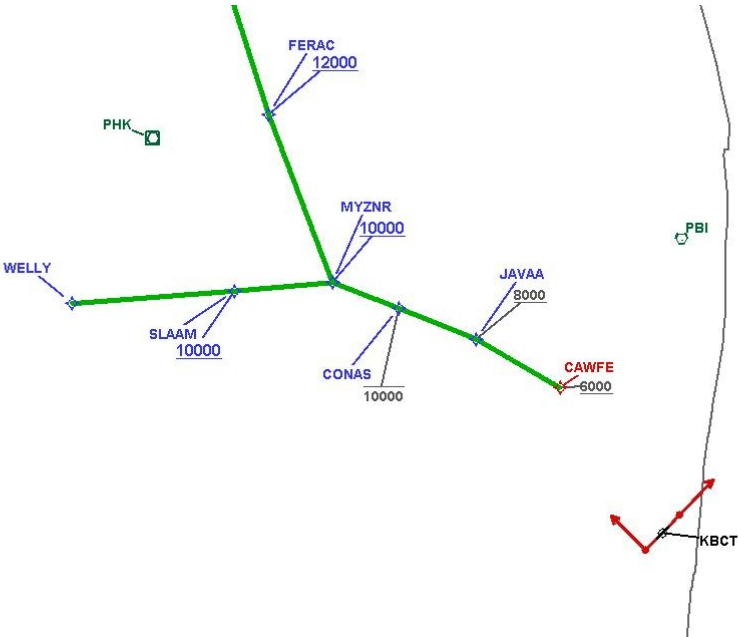
DME DME Assessment Results for MYZNR3 path MYZNR\_WELLY

Graphic Depiction 1



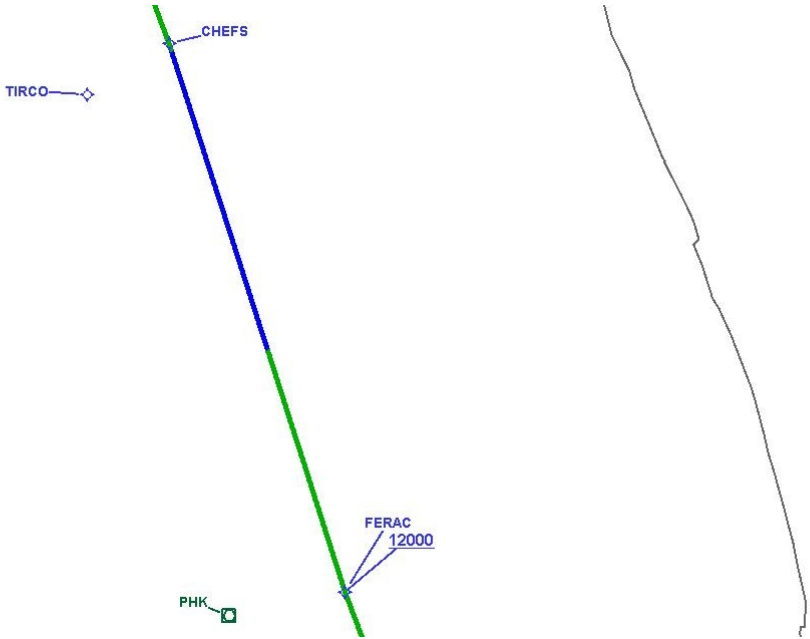
DME DME Assessment Results for MYZNR3 path MYZNR\_WELLY

Graphic Depiction 2



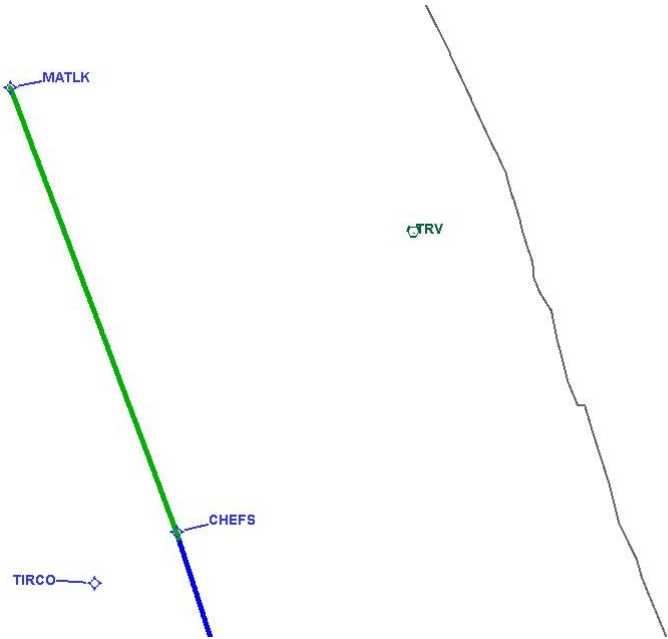
DME DME Assessment Results for MYZNR3 path MYZNR\_WELLY

Graphic Depiction 3



DME DME Assessment Results for MYZNR3 path MYZNR\_WELLY

Graphic Depiction 4



DME ESVs								
#	Name	Lat/Lon	MAGVAR	Range	Elevation [ft]	Frequency	Replaces	Status
None								