

Flight Procedures Cover Page	Task Action: FLIGHT CHECK	Task Type: IAP	Estimated Chart Date: 08/07/2025	APWS Task ID: 143B78DD26714A9B8043E94F6BCF8B8F	APWS Project ID: 3746E99BA1514DB58310DD00AEAFE8A1
Procedure: RNAV (GPS) RWY 36 AMDT 1		Enroute: NO	Specialist: Bruce, Richard		Agreement Number:
Airport ID: 80F			Airport City: ANTLERS		State: OK
Facility ID:	Facility Type:	Flight Inspection Remark Type: New FC Slot			
<div>Procedure Comments:</div> <div>ASSIGNED MAG VAR: 80F: OLD 5E - NEW 2E.</div> <div>RUNWAY NUMBERS UPDATED: OLD 17/35 - NEW 18/36.</div> <div>PENDING DATA USED FOR 80F AIRPORT AND RUNWAYS.</div> <div>NEW CRC REMAINDER: FF837821.</div> <div>CONTACT RAKE MCGRAW, AJV-A422, (405) 954-8711.</div> <div><div>QUALITY 9 CHECKED BEGUE</div><div>QUALITY 10 CHECKED</div></div>					

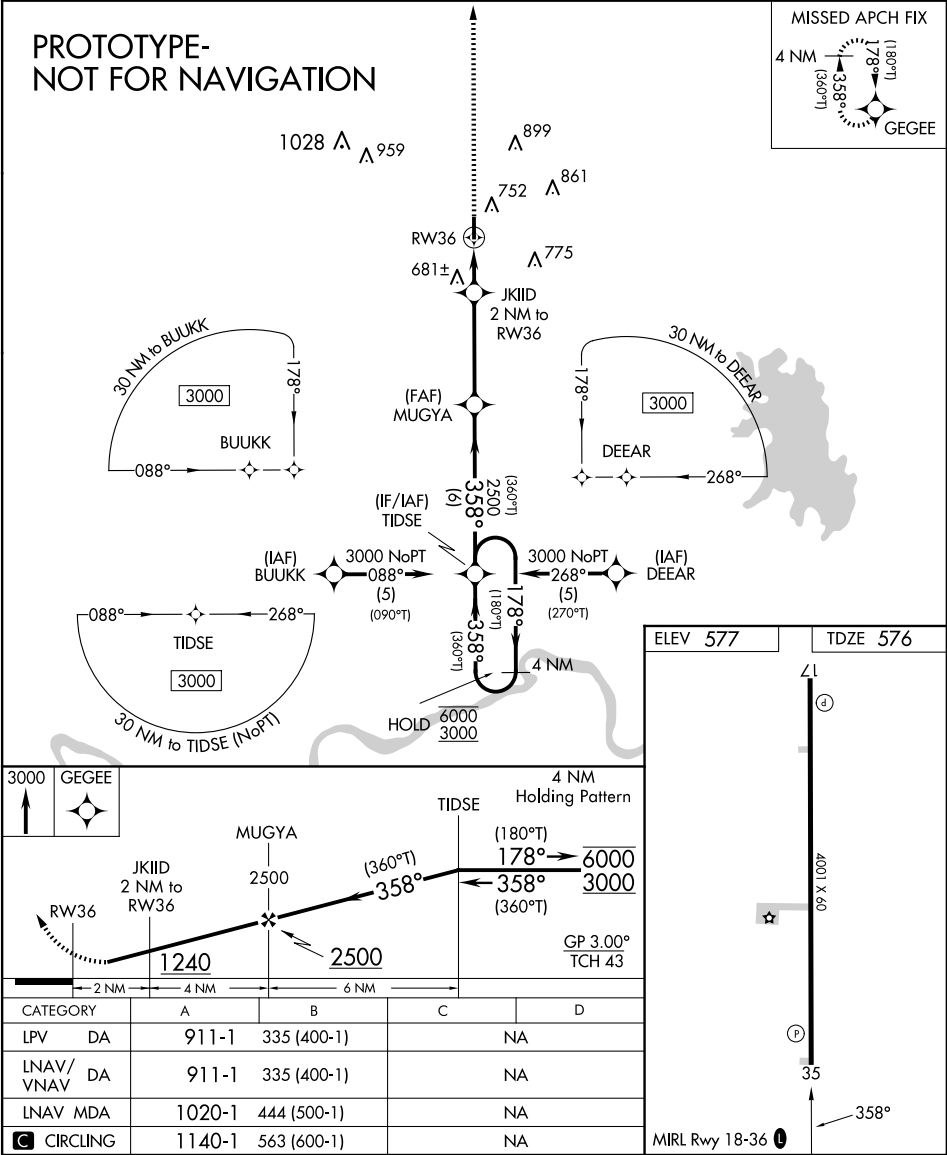
FIPC BASIC FORM								
PROCEDURE: RNAV (GPS) RWY 36 AMDT 1			AIRPORT NAME: ANTLERS MUNI		AIRPORT ID: K80F		SPECIAL CONTROL NO: OG-03-412-25	
FAC ID: K80F36.01		CITY: ANTLERS			ST: OK		ORIG CHART DATE: 08/07/2025	
DFL TYPE: PROC/S	THIRD PARTY: <input type="checkbox"/> YES	EST. TIME ON SITE: 0.4	REIMB. NUMBER:		PTS TASK ID: 143B78DD26714A9B8043E94F6BCF8B8F			
PREFLIGHT NOTES								
REVIEWER:						DATE:		
COMMENTS:						CHECK ONE:		
						<input type="checkbox"/> FLT CK REQ <input type="checkbox"/> NFCR <input type="checkbox"/> REJECT		
								YES
						CPV COMPLETE?		X
PROCEDURE RESULTS								
INSPECTION DATE: 05/05/2025		CREW #: VN330	N #: N66	INSTRUMENT PROCEDURE STATUS: <input checked="" type="checkbox"/> SAT <input type="checkbox"/> SAT W/CHANGES <input type="checkbox"/> UNSAT		ARINC CODING: <input checked="" type="checkbox"/> SAT <input type="checkbox"/> SAT/GOLD <input type="checkbox"/> UNSAT		
FLIGHT INSPECTOR SIGNATURE: brian harrelson @ 05/06/2025 08:45			PRINTED NAME: HARRELSON, BRIAN DAVID				NOTAM INITIATED? <input type="checkbox"/> YES <input checked="" type="checkbox"/> NO	
FLIGHT INSPECTOR REMARKS: OG-03-412-25. K80F, Antlers Muni, Antlers, OK. RNAV (GPS) RWY 36 Amdt. 1 for MagVar update, added initial segments from BUUKK abd DEEAR, and changed MA holding Complete/SAT.								
IN-FLIGHT OBSTACLE REPORT								
OBSTRUCTION ID #:	COORDINATES OR LOCATION:		GNSS ALTITUDE (MSL):		BAROMETRIC ALTITUDE (MSL):		HEIGHT ABOVE GROUND LEVEL:	

WAAS CH 70428 W36A	APP CRS 358°	Rwy Ldg TDZE Apt Elev	4001 576 577
--	------------------------	-----------------------------	---

RNAV (GPS) RWY 36
ANTLERS MUNI (80F)

RNP APCH - GPS.	Baro-VNAV NA. Circling Rwy 18 NA at night. Rwy 36 helicopter visibility reduction below 3/4 SM NA. Use PRX altimeter setting; when not received, use DUA altimeter setting: increase LPV and LNAV/VNAV DA to 937 feet; increase all MDAs 40 feet.	MISSED APPROACH: Climb to 3000 direct GEGEE and hold.
-----------------	---	--

PRX AWOS-3PT 119.675	FORT WORTH CENTER 124.875 370.95	CTAF 122.9 0
--------------------------------	--	------------------------



24025

OLD

RNAV (GPS) RWY 35

ANTLERS MUNI (80F)

RNP APCH

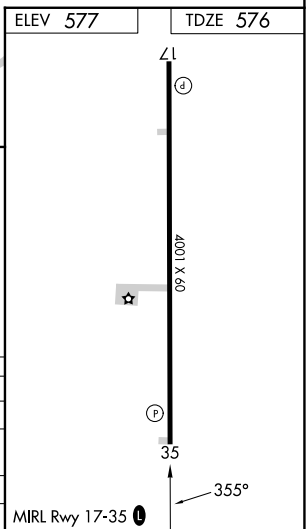
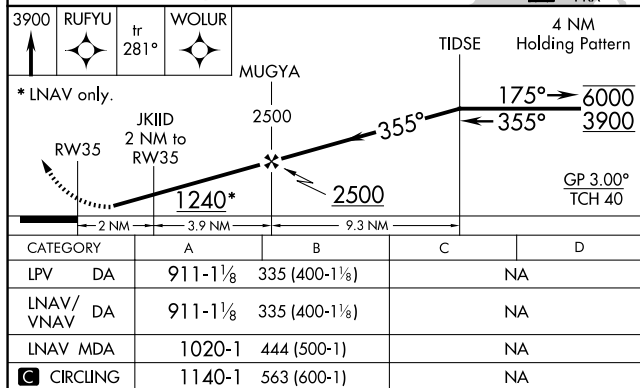
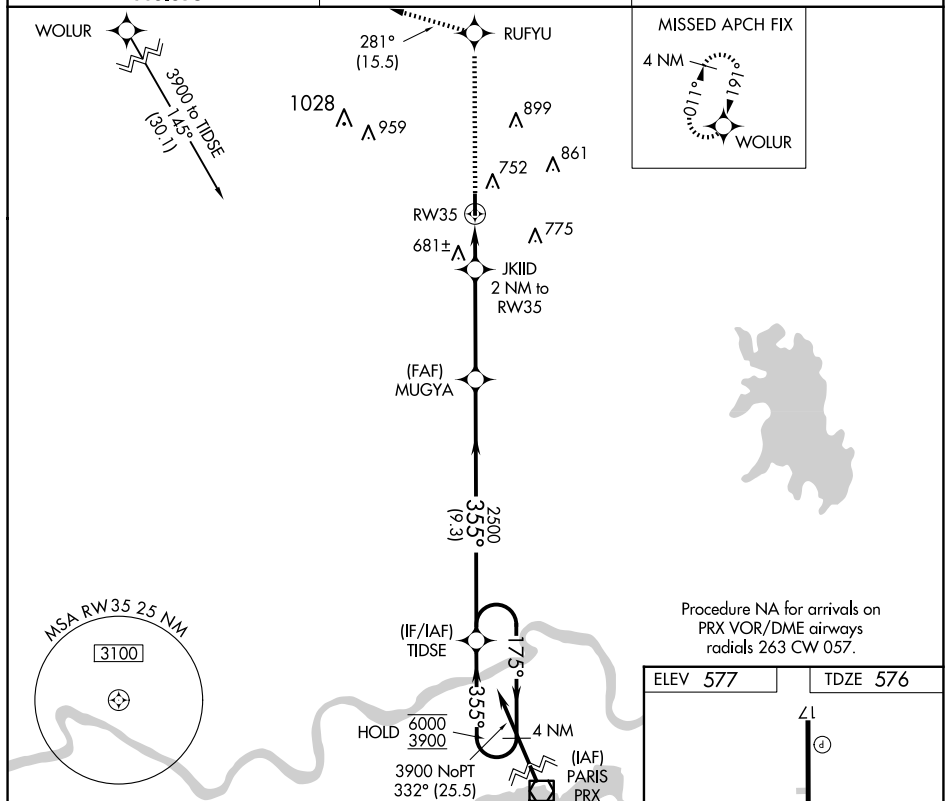
TANA

Circling to Rwy 17 NA at night. Rwy 35 helicopter visibility reduction below $\frac{3}{4}$ SM NA. Baro-VNAV NA. Use Paris altimeter setting; when not received, use Durant altimeter setting and increase LPV and LNAV/VNAV DA to 937 feet, increase all MDA 40 feet.

MISSED APPROACH: Climb to 3900 direct RUFYU and on track 281° to WOLUR and hold.

PRX AWOS-3PT
119.675

FORT WORTH CENTER
124.875 370.95

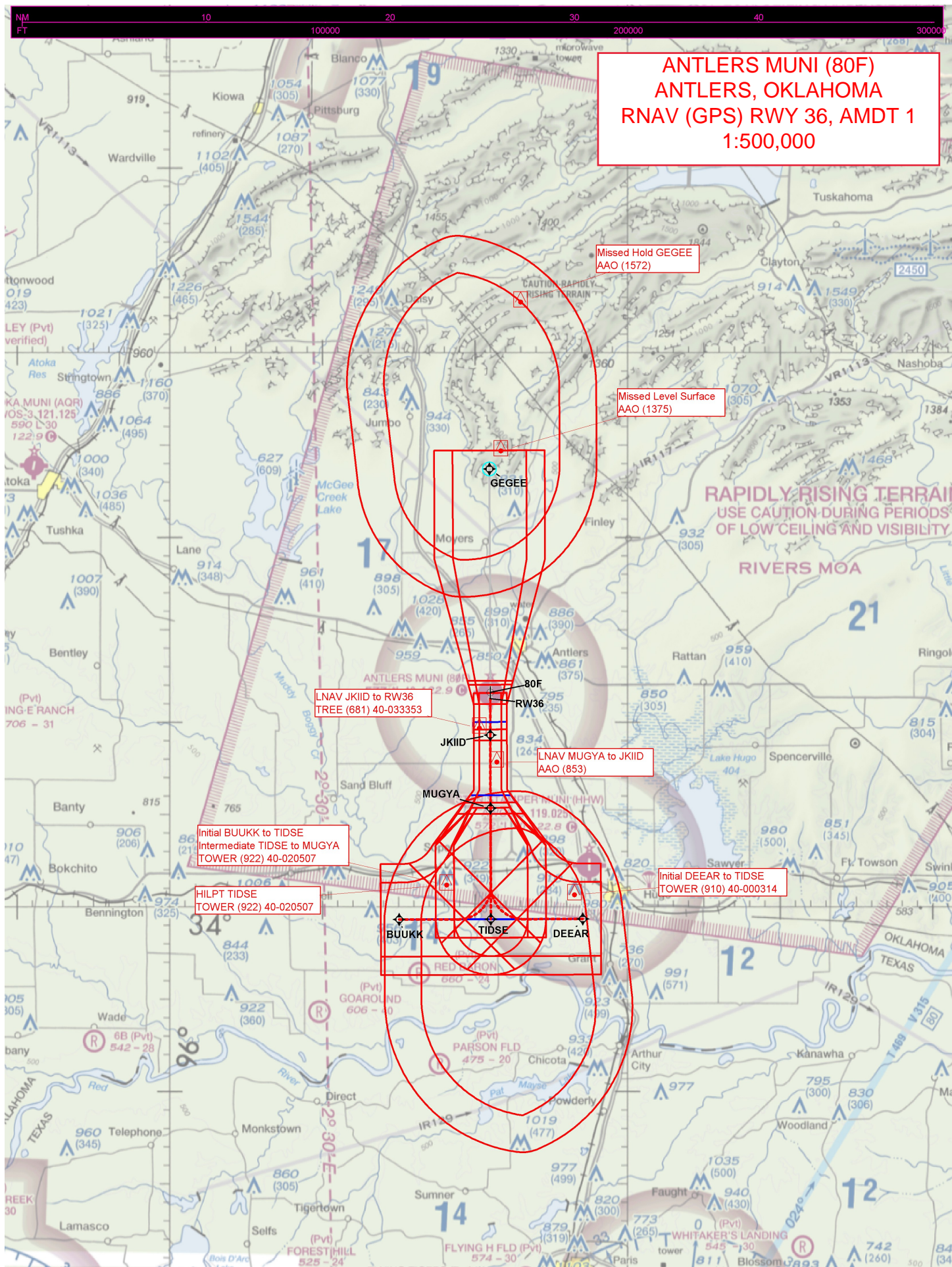
CTAF
122.9 L

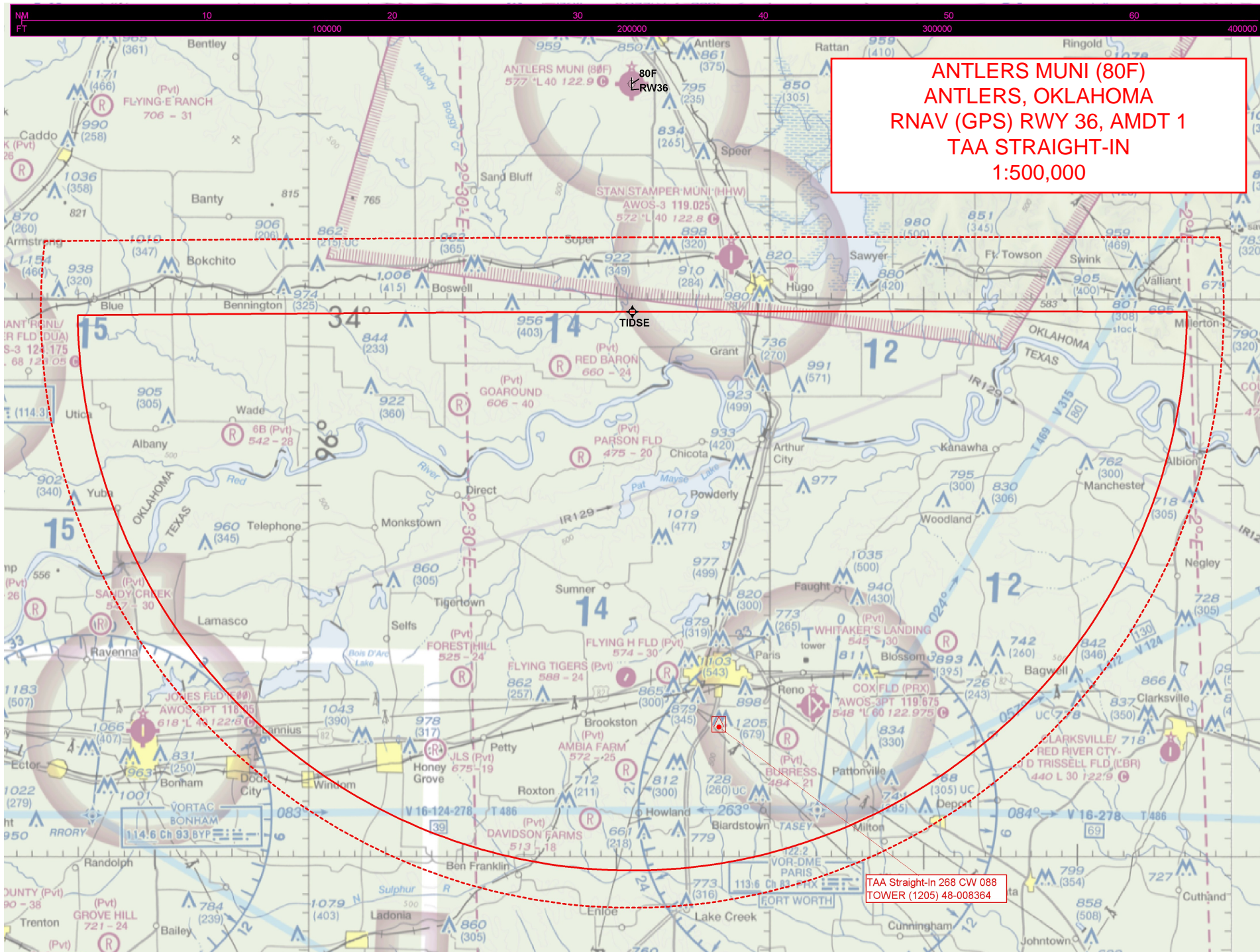
ANTLERS MUNI (80F)

34°12'N-95°39'W

RNAV (GPS) RWY 35

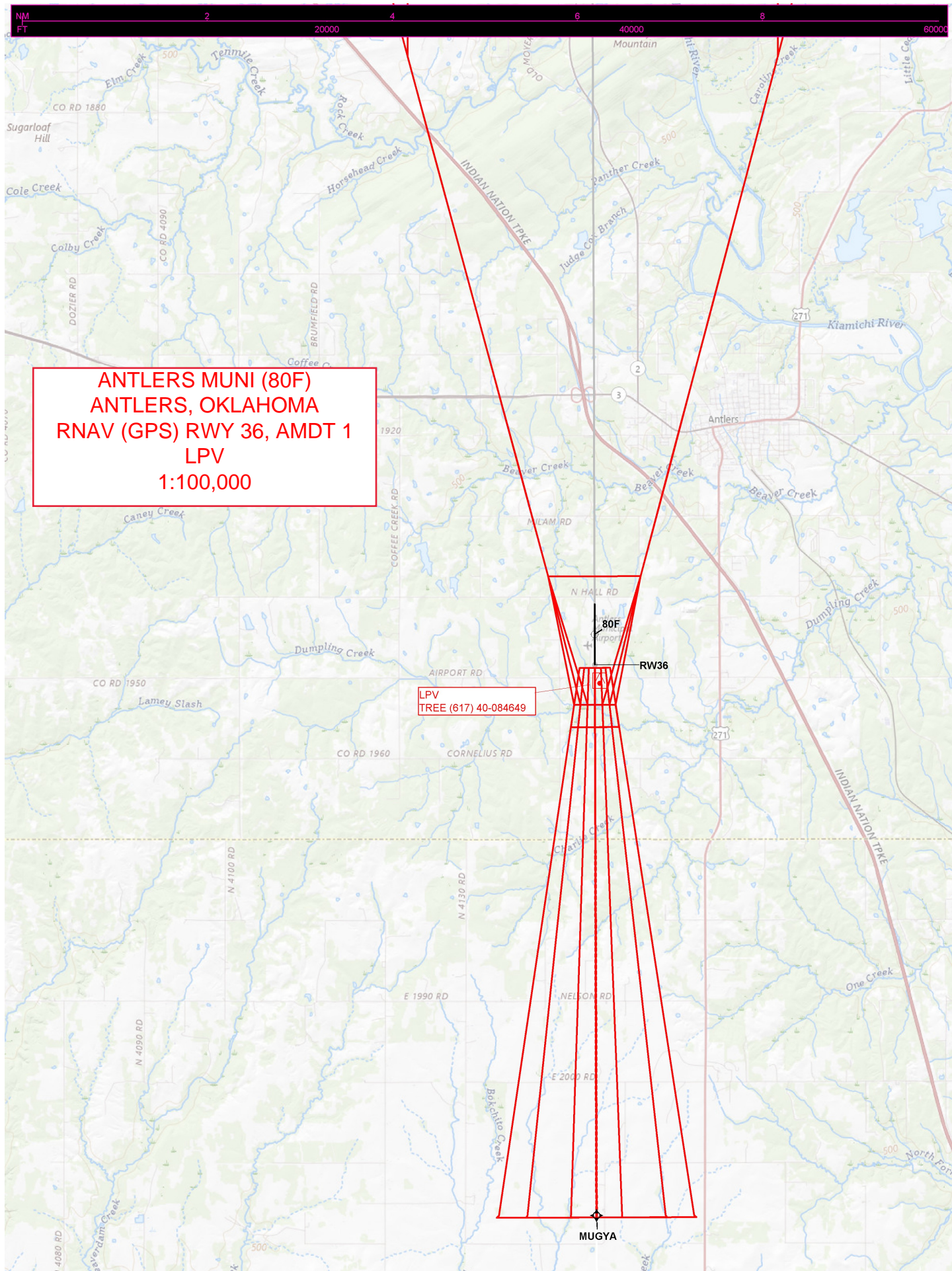
SC-1, 23 JAN 2025 to 20 FEB 2025

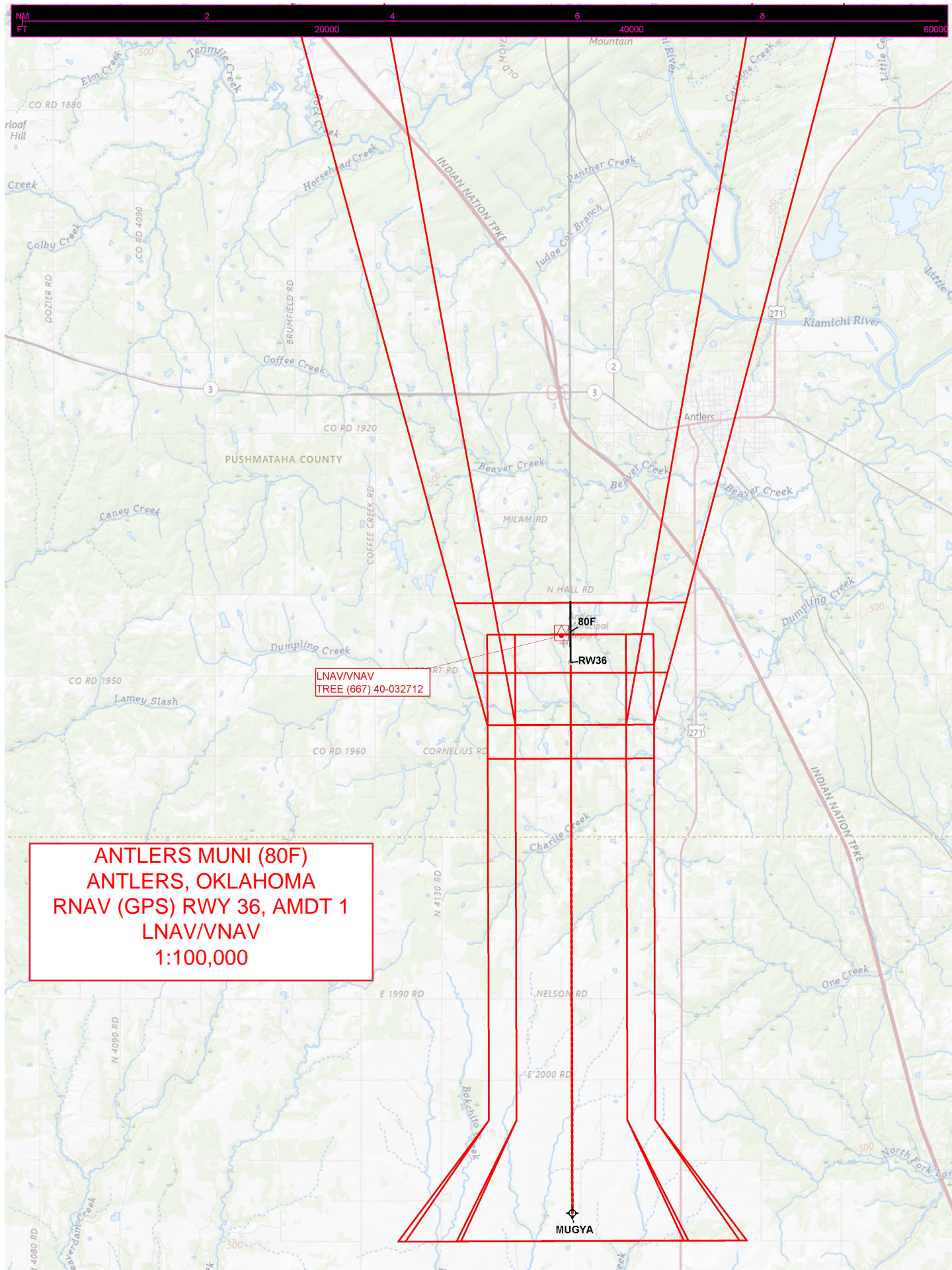


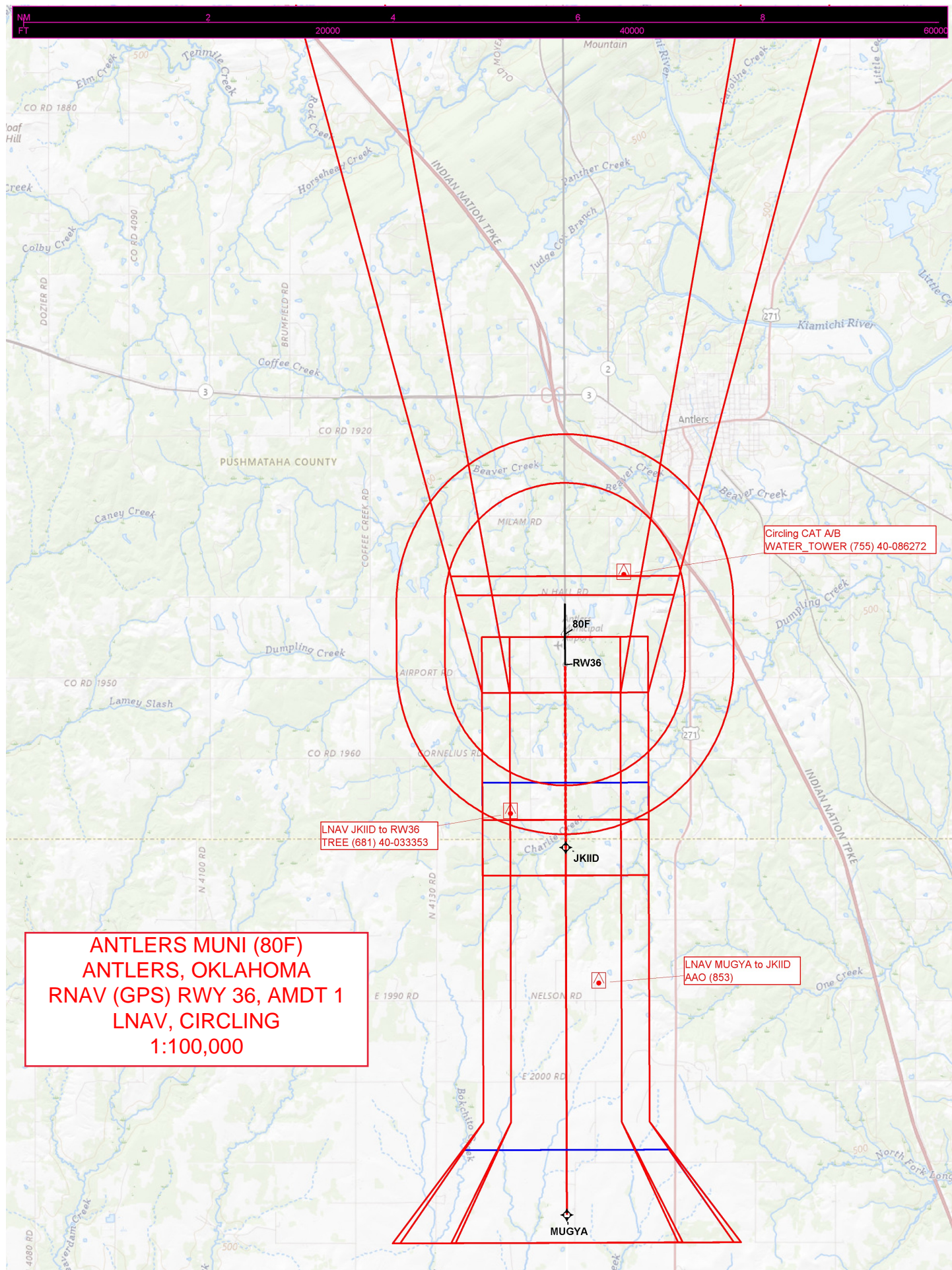


ANTLERS MUNI (80F)
ANTLERS, OKLAHOMA
RNAV (GPS) RWY 36, AMDT 1
TAA LEFT BASE
1:500,000

The chart displays the Antlers Muni (80F) airport, located in Antlers, Oklahoma. The airport is marked with a red dot and labeled with its name and elevation. The chart also shows the TAA Left Base 088 CW 178 AAO (1428). The chart includes various navigation aids, such as VORTAC stations and RNAV (GPS) RWY 36, AMDT 1. The chart also shows the terrain, with elevations ranging from 1,000 to 1,500 feet. The chart is a detailed aeronautical chart, showing various airports, navigation aids, and terrain features. A red dashed line outlines a specific area of interest, and a red box highlights the title information.









Federal Aviation Administration

Initial Development Notification for AIRNAV Pending Records

To: Brian Murphy, Manager Aeronautical Data Team, AJV-A31

From: Patrick Mulqueen, Manager Instrument Flight Procedures Quality Control, AJV-A44

Subject: **ACTION:** Request for Pending Records **K80F__ANTLERS MUNI, , OK US**

The Magnetic Variation (MV) data for the airport(s) and/or facility(s) listed will be revised effective concurrent with the publication of the procedure(s) listed below. Estimated Chart Date: 8/7/2025

Current/Assigned MV E 5 2000 New MV E 2 2025

ECD	Airport ID	Procedure Name	Task Report Type Selections
8/7/2025	K80F	RNAV (GPS) RWY 18 ORIG	WAAS NEW MAGVAR
8/7/2025	K80F	RNAV (GPS) RWY 36 AMDT 1	MAGVAR
8/7/2025	K80F	TAKEOFF MINIMUMS AND (OBSTACLE) DEPARTURE PROCEDURES	MAGVAR

NAVAID ID / RWY	Type / Old No.	Use / New RWY/Note
RWY	35	36
RWY	17	18

IF you have any questions please notify: Rake.McGraw@faa.gov

Processed Tuesday, January 21, 2025