


Flight Procedures Cover Page	Task Action: FLIGHT CHECK	Task Type: IAP	Estimated Chart Date: 10/02/2025	APWS Task ID: 140112BAED6B44479D2A0AE5B044C965	APWS Project ID: 2B43F2C2F2604294BD57E8C939FCBDA9
Procedure: RNAV (GPS) Z RWY 13 AMDT 1D		Enroute: NO	Specialist: Johnson, Timothy		Agreement Number:
Airport ID: KHBG			Airport City: HATTIESBURG		State: MS
Facility ID:	Facility Type:	Flight Inspection Remark Type: New FC Slot			
<div>Procedure Comments: ACTIVE DATA USED.</div> <div>P-NOTAM.</div> <div>CLEARs T-NOTAM 3/9214.</div> <div>NEW LNAV/VNAV CONTROLLING OBSTACLE: 334 TOWER (28-059729) 311606.70N/0891641.30W (1A). MISSED APPROACH SECTION 2 CONTROLLING OBSTACLE: 397 TOWER (28-020480) 311508.81N/0891632.28W (1A).</div> <div>CONTACT: DAVID DANNER (405) 954-5077.</div> <div><div>QUALITY 41 CHECKED</div><div>QUALITY 32 CHECKED Digitally signed by PABLO ORTIZ-JR Apr 17, 2025</div></div>					

FIPC BASIC FORM						
PROCEDURE: RNAV (GPS) Z RWY 13 AMDT 1D			AIRPORT NAME: HATTIESBURG BOBBY L CHAIN		AIRPORT ID: KHBG	SPECIAL CONTROL NO: AG-04-316-25
FAC ID: KHBG13.01Z		CITY: HATTIESBURG			ST: MS	ORIG CHART DATE: 10/02/2025
DFL TYPE: PROC/S	THIRD PARTY: <input type="checkbox"/> YES	EST. TIME ON SITE: 0.4	REIMB. NUMBER:	PTS TASK ID: 140112BAED6B44479D2A0AE5B044C965		
PREFLIGHT NOTES						
REVIEWER:					DATE:	
COMMENTS:					CHECK ONE: <input type="checkbox"/> FLT CK REQ <input type="checkbox"/> NFCR <input type="checkbox"/> REJECT <div style="border-top: 1px solid black; display: flex; justify-content: space-between; width: 100%;"> YES NO </div>	
					CPV COMPLETE?	
PROCEDURE RESULTS						
INSPECTION DATE: 05/21/2025	CREW #: VN546	N #: N80	INSTRUMENT PROCEDURE STATUS: <input checked="" type="checkbox"/> SAT <input type="checkbox"/> SAT W/CHANGES <input type="checkbox"/> UNSAT		ARINC CODING: <input checked="" type="checkbox"/> SAT <input type="checkbox"/> SAT/GOLD <input type="checkbox"/> UNSAT	
FLIGHT INSPECTOR SIGNATURE: jon d holland @ 05/21/2025 18:47			PRINTED NAME: HOLLAND, JON DAVID			NOTAM INITIATED? <input type="checkbox"/> YES <input checked="" type="checkbox"/> NO
FLIGHT INSPECTOR REMARKS: Special Number: AG-04-316-25. HATTIESBURG BOBBY L CHAIN MUNI, HATTIESBURG, MS, RNAV (GPS) Z RWY 13, AMDT 1D, Completed Sat. NEW LNAV/VNAV CONTROLLING OBSTACLE, CLEARS T-NOTAM 3/9214						
IN-FLIGHT OBSTACLE REPORT						
OBSTRUCTION ID #:	COORDINATES OR LOCATION:	GNSS ALTITUDE (MSL):	BAROMETRIC ALTITUDE (MSL):	HEIGHT ABOVE GROUND LEVEL:		

WAAS CH 86403 W13A	APP CRS 132°	Rwy Idg TDZE 151 Apt Elev 151
--	------------------------	---

RNAV (GPS) Z RWY 13
HATTIESBURG BOBBY L CHAIN MUNI (HBG)

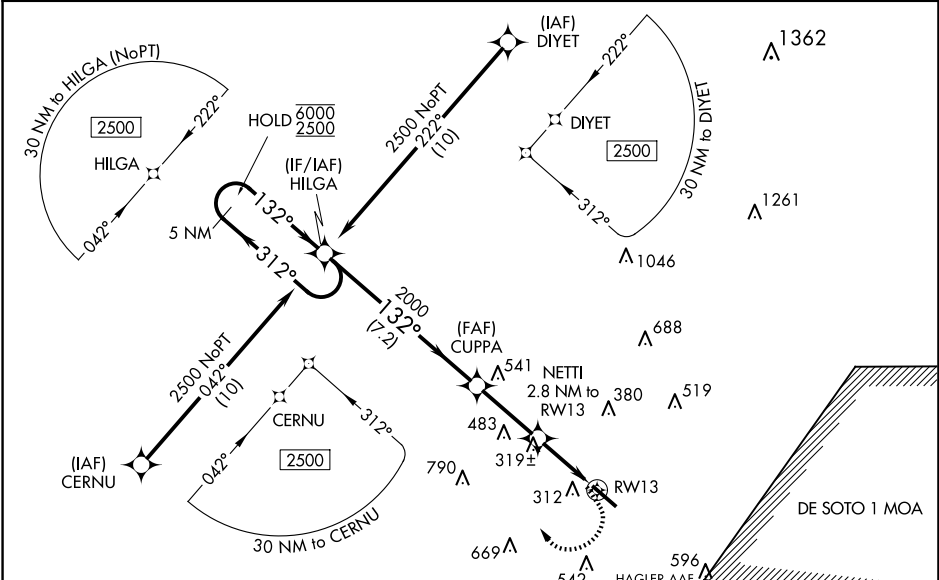
RNP APCH.



For uncompensated Baro-VNAV systems, LNAV/VNAV NA below -15°C or above 43°C.
Cat D aircraft require ATC approval when R-4401 is active.

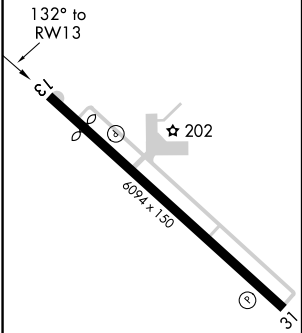
MISSED APPROACH:
Climb to 600 then climbing
right turn to 2500 direct
HILGA and hold.



ASOS 135.425	HOUSTON CENTER 126.8 327.8	UNICOM 122.8 (CTAF) 0
------------------------	--------------------------------------	---------------------------------



ELEV 151

TDZE 151



REIL Rwy 13 
MIRL Rwy 13-31 

Uncontrolled helicopter and military airlift aircraft in vicinity of Hagler AAF and Shelby Auxiliary 1 Airfield.			
5 NM Holding Pattern HILGA			
VGSI and RNAV glidepath not coincident (VGSI Angle 3.00/TCH 50).			
GP 3.00° TCH 40			
CATEGORY A B C D			
LPV DA 351-3/4 200 (200-3/4)			
LNAV/VNAV DA 473-1 322 (400-1)			
LNAV MDA 580-1 429 (500-1) 580-1 429 (500-1 1/4)			
CIRCLING 680-1 720-1 860-2 900-2 1/2 529 (600-1) 569 (600-1) 709 (800-2) 749 (800-2 1/2)			

WAAS CH 86403 W13A	APP CRS 132°	Rwy Idg TDZE 151 Apt Elev 151	5098
--	------------------------	---	-------------

RNAV (GPS) Z RWY 13

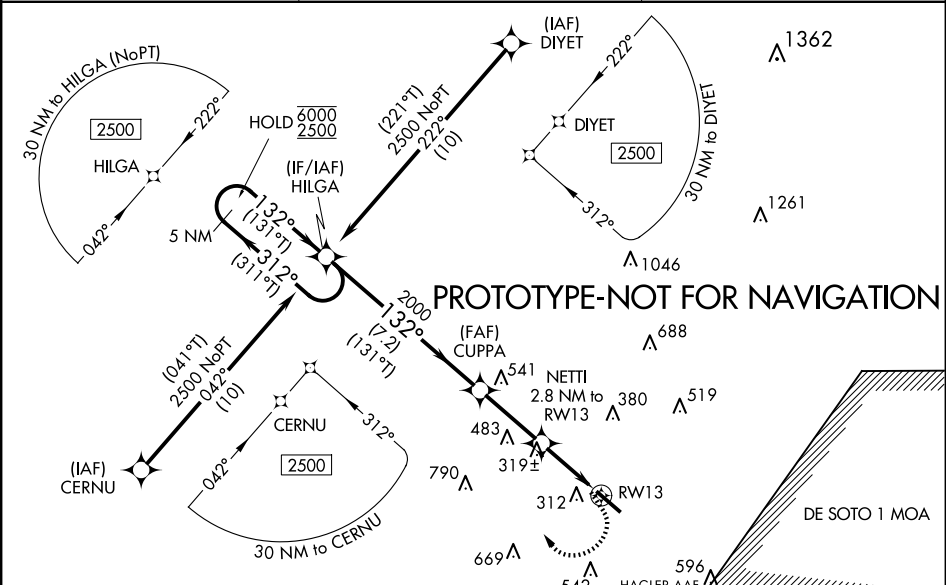
HATTIESBURG BOBBY L CHAIN MUNI (HBG)

RNP APCH-GPS.

For uncompensated Baro-VNAV systems, LNAV/VNAV NA below -15°C or above 43°C.
Cat D aircraft require ATC approval when R-4401 is active.

MISSED APPROACH:
Climb to 600 then climbing
right turn to 2500 direct
HILGA and hold.

ASOS 135.425	HOUSTON CENTER 126.8 327.8	UNICOM 122.8 (CTAF) 0
------------------------	--------------------------------------	---------------------------------



ELEV 151 TDZE 151

Inset chart showing the approach from the south, with a heading of 132° and a distance of 6094 x 150.

REIL Rwy 13 0
MIRL Rwy 13-31 0

Uncontrolled helicopter and military
airlift aircraft in vicinity of Hagler AAF
and Shelby Auxiliary 1 Airfield.

5 NM Holding Pattern	VGSI and RNAV glidepath not coincident (VGSI Angle 3.00/TCH 50).	600	2500	HILGA
GP 3.00° TCH 40	7.2 NM	2.9 NM	1.6 NM	1.2 NM
CATEGORY	A	B	C	D
LPV DA	351-3/4	200 (200-3/4)		
LNAV/ VNAV DA	536-1 1/8	385 (400-1 1/8)		
LNAV MDA	580-1	429 (500-1)	580-1 1/4	429 (500-1 1/4)
CIRCLING	680-1 529 (600-1)	720-1 569 (600-1)	860-2 709 (800-2)	900-2 1/2 749 (800-2 1/2)

