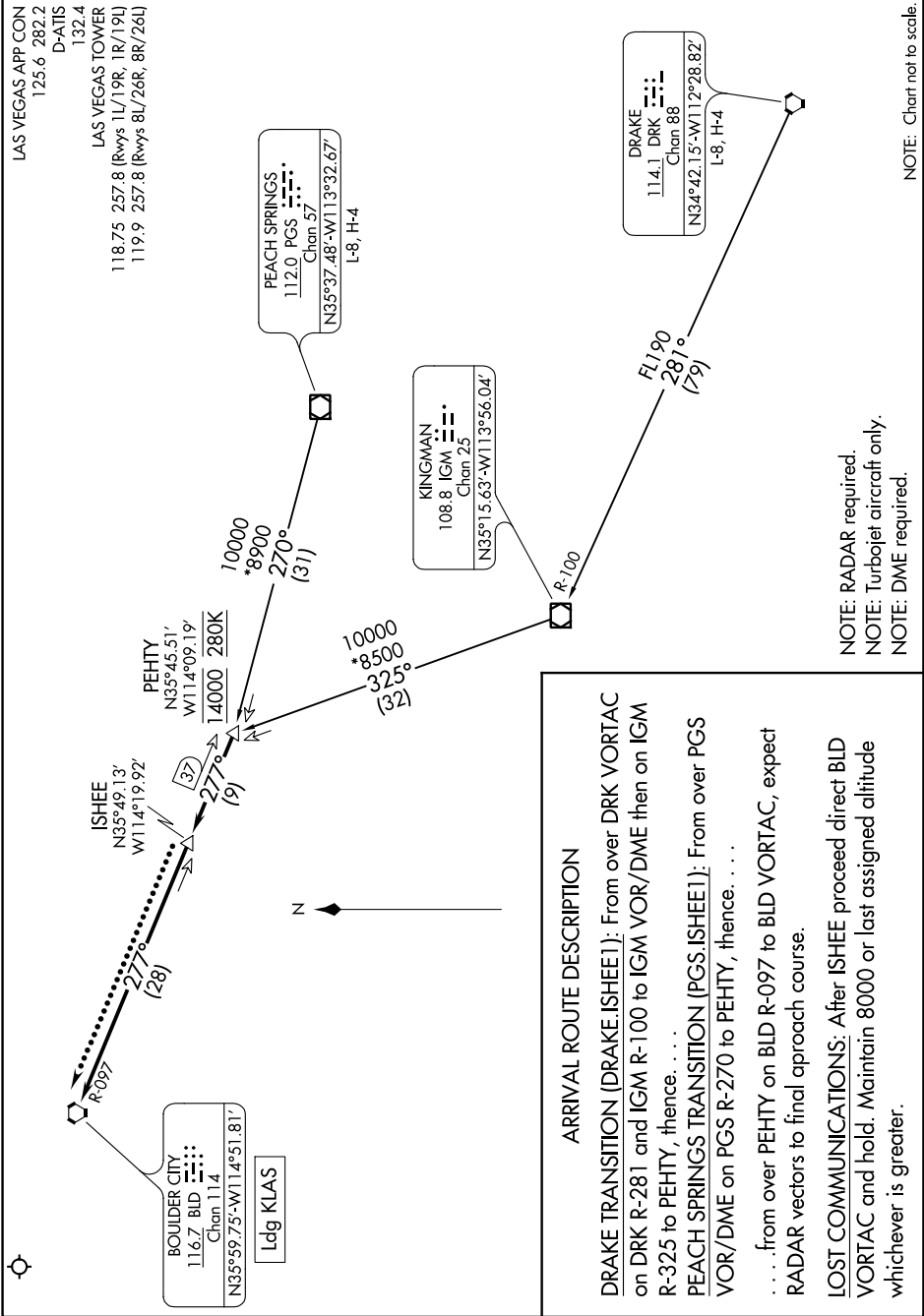


Flight Procedures Cover Page	Task Action: Amendment	Task Type: STAR	Estimated Chart Date: 01/27/2022	APWS Task ID: 11E9A40A1BD74BB180FDC3F92B820826	APWS Project ID: CAA2525C405D4306A93F787832BE1F46
Procedure: STAR ISHEE TWO LAS VEGAS NV KLAS		Enroute: YES	Specialist: Brandenburg, Phillip		Agreement Number:
Airport ID: KLAS			Airport City: LAS VEGAS		State: NV
Facility ID:	Facility Type:	Flight Inspection Remark Type:			
<p>Procedure Comments: KLAS METROPLEX.</p> <p>Processed IAW Technical Support Group (AJF-17) Memo dated 07/07/2021 Guidance for Procedural Changes Requiring Flight Inspection/Validation.</p> <div style="text-align: right;"> <p>J ZEDER 09/15/2021</p> <p>Digitally signed by MARY MCDONALD Sep 17, 2021</p> </div>					

QUALITY
16
CHECKED

QUALITY
12
CHECKED

SW-4, 12 AUG 2021 to 09 SEP 2021



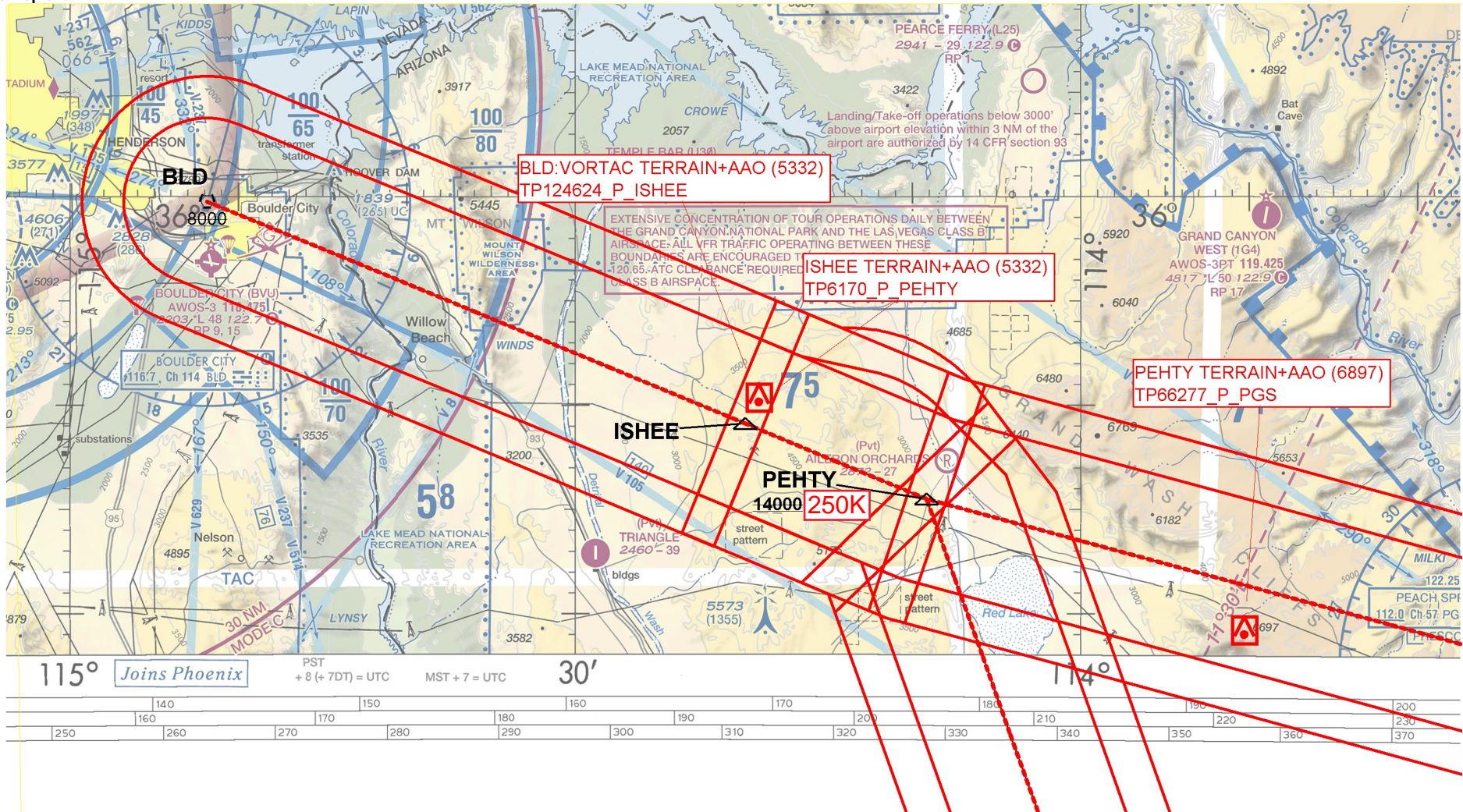
SW-4, 12 AUG 2021 to 09 SEP 2021

FEDERAL AVIATION ADMINISTRATION
FLIGHT STANDARDS SERVICE
STANDARD TERMINAL ARRIVAL (STAR)

Bearings, headings, courses, tracks and radials are magnetic. Elevations and altitudes are in feet, MSL. Altitudes are minimum altitudes unless otherwise indicated. Distances are in nautical miles (NM). Graphic depictions attached.

Arrival Name	Number	STAR Computer Code	Superseded Number	Dated	Effective Date
ISHEE	ONE	PEHTY.ISHEE1	NONE		

Graphic Depiction 2



FEDERAL AVIATION ADMINISTRATION
FLIGHT STANDARDS SERVICE
STANDARD TERMINAL ARRIVAL (STAR)

Bearings, headings, courses, tracks and radials are magnetic. Elevations and altitudes are in feet, MSL. Altitudes are minimum altitudes unless otherwise indicated. Distances are in nautical miles (NM). Graphic depictions attached.

Arrival Name	Number	STAR Computer Code	Superseded Number	Dated	Effective Date
ISHEE	ONE	PEHTY.ISHEE1	NONE		

Graphic Depiction 3

