

ROCKIES SIX DEPARTURE

AL-9077 (FAA)

DENVER INTL (DEN)
DENVER, COLORADO

TAKEOFF MINIMUMS
All Runways: Standard.

NOTE: Chart not to scale.

(CONTINUED ON FOLLOWING PAGE)

AUTOMATED AL-9077 ROCKIES DEPARTURE

SW-1

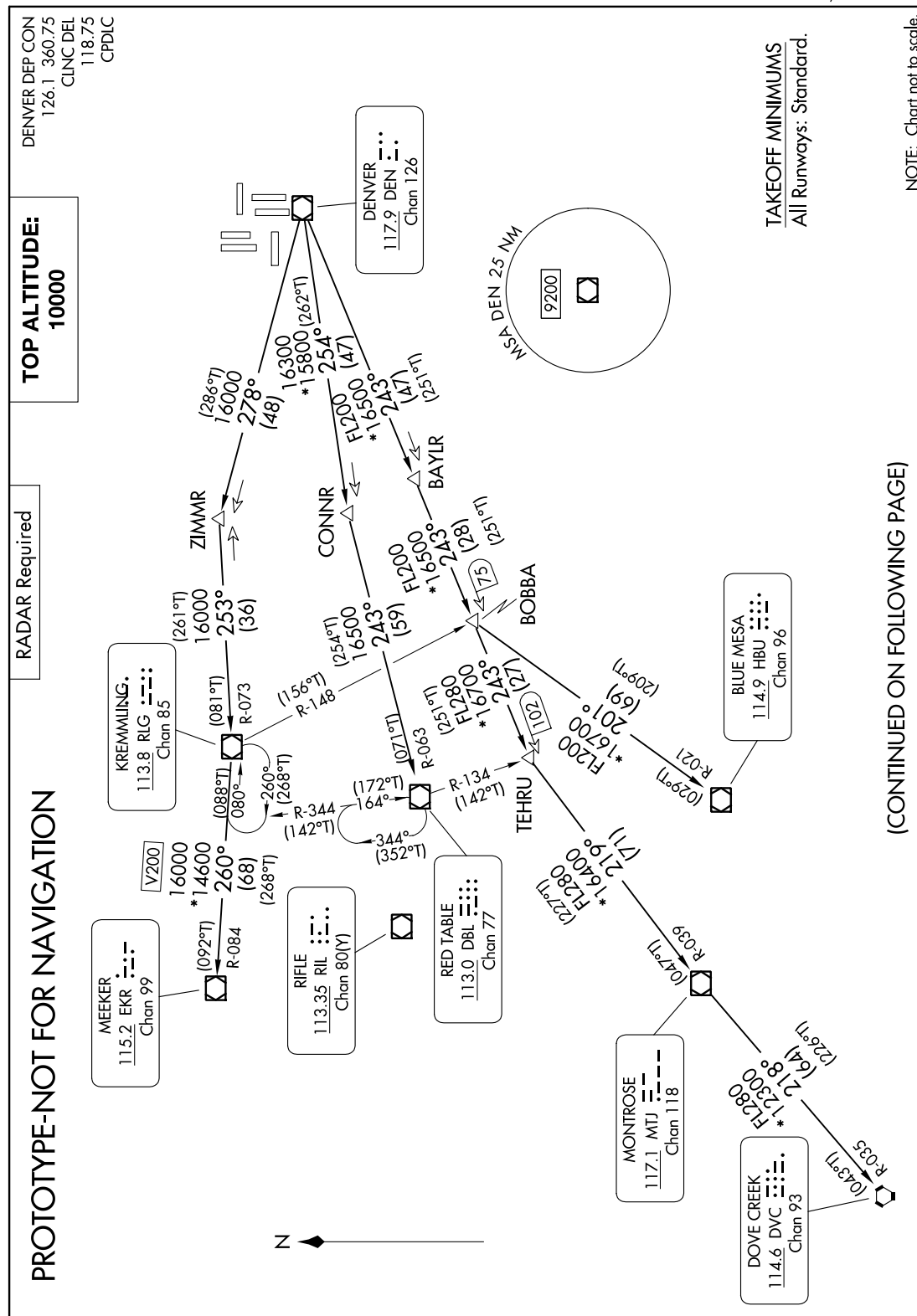
02/22/24

COMPILER: JUN

REVIEWER:

DBL CHKR:

EFF: FIG



ROCKIES SIX DEPARTURE

(ROCK16.DEN) FIG

DENVER, COLORADO
DENVER INTL (DEN)



DEPARTURE ROUTE DESCRIPTION

TAKEOFF ALL RUNWAYS: Fly assigned heading for RADAR vectors to assigned route. Climb and maintain 10000 or ATC assigned lower altitude. Expect filed altitude 10 minutes after departure.

LOST COMMUNICATIONS: If no transmissions are received within one minute after departure, maintain assigned heading until 7000 feet, then climb to filed altitude direct DEN VOR/DME, then on assigned transition. If filed altitude is above 10000 feet, cross DEN VOR/DME at or above 11000 feet.

BLUE MESA TRANSITION (ROCKI6.HBU): From over DEN VOR/DME on DEN R-243 and HBU R-021 to HBU VOR/DME.

DOVE CREEK TRANSITION (ROCKI6.DVC): From over DEN VOR/DME on DEN R-243 and MTJ R-039 to MTJ VOR/DME, then on MTJ R-218 and DVC R-035 to DVC VORTAC.

KREMMLING TRANSITION (ROCKI6.RLG): From over DEN VOR/DME on DEN R-278 and RLG R-073 to RLG VOR/DME.

MEEKER TRANSITION (ROCKI6.EKR): From over DEN VOR/DME on DEN R-278 and RLG R-073 to RLG VOR/DME, then on RLG R-260 and EKR R-084 to EKR VOR/DME.

MONTROSE TRANSITION (ROCKI6.MTJ): From over DEN VOR/DME on DEN R-243 and MTJ R-039 to MTJ VOR/DME.

RED TABLE TRANSITION (ROCKI6.DBL): From over DEN VOR/DME on DEN R-254 and DBL R-063 to DBL VOR/DME.

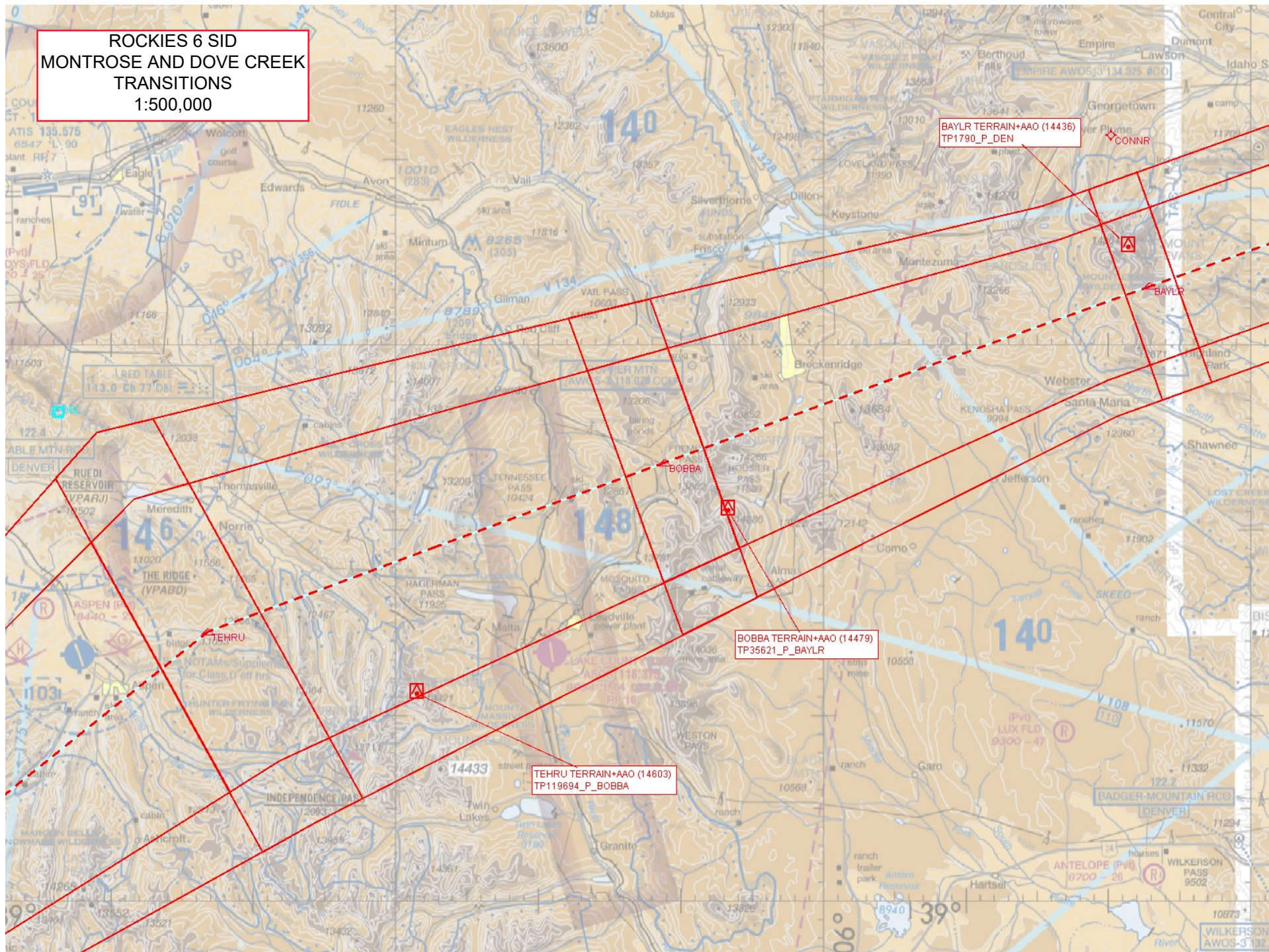
PROTOTYPE-NOT FOR NAVIGATION

AUTOMATED AL-9077 ROCKIES DEPARTURE (CONT PAGE)

SW-1
02/22/24
COMPILER: JUN
REVIEWER:
DBL CHKR:
EFF DATE: 21 MAR 24

ROCKIES 6 SID
MONTROSE AND DOVE CREEK
TRANSITIONS
1:500,000

ROCKIES 6 SID
MONTROSE AND DOVE CREEK
TRANSITIONS
1:500,000

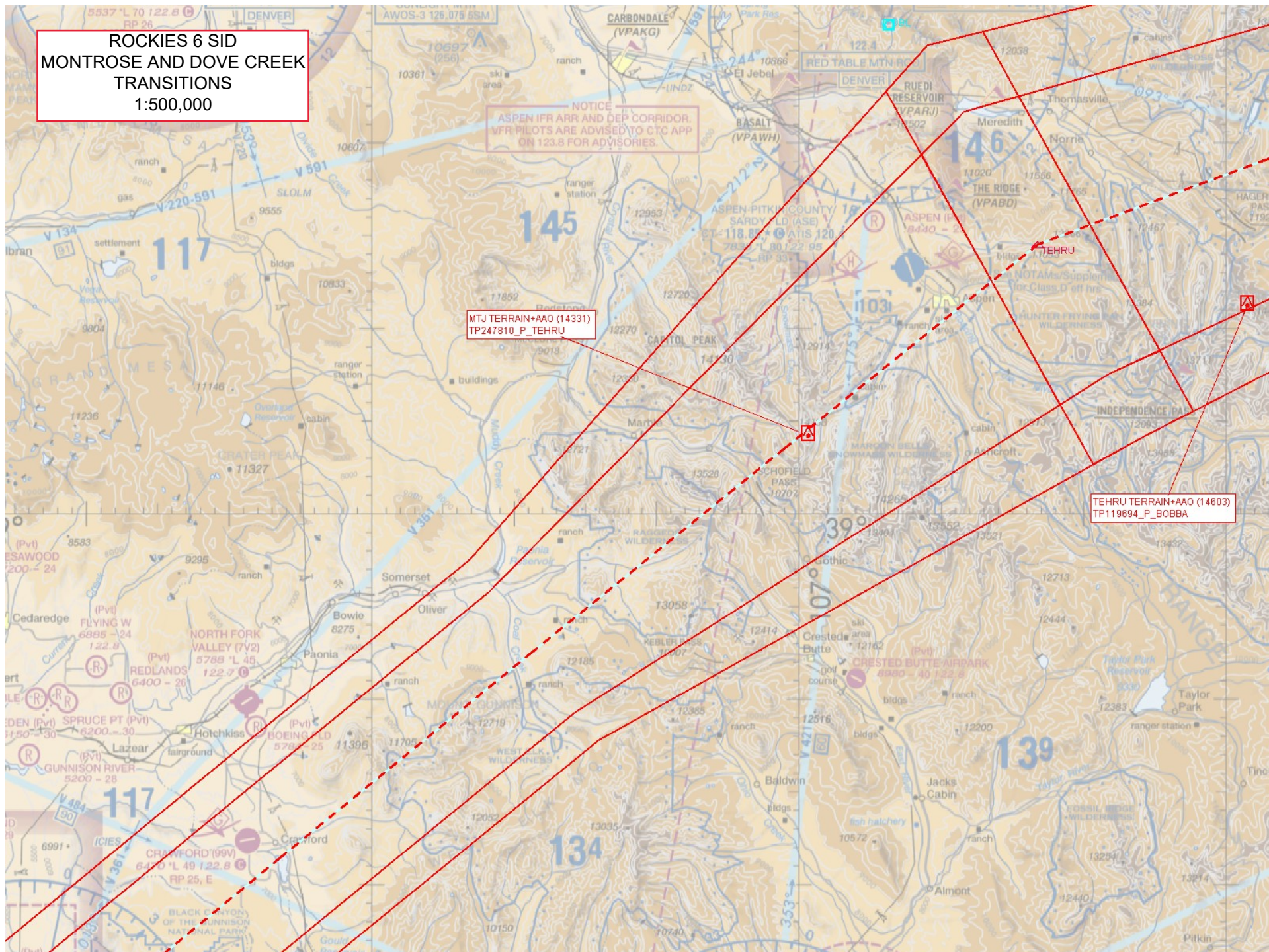


ROCKIES 6 SID
MONTROSE AND DOVE CREEK
TRANSITIONS
1:500,000

NOTICE
ASPEN IFR ARR AND DEP CORRIDOR.
VFR PILOTS ARE ADVISED TO CTC APP
ON 123.8 FOR ADVISORIES.

MTJ TERRAIN+AAO (14331)
TP247810_P_TEHRU

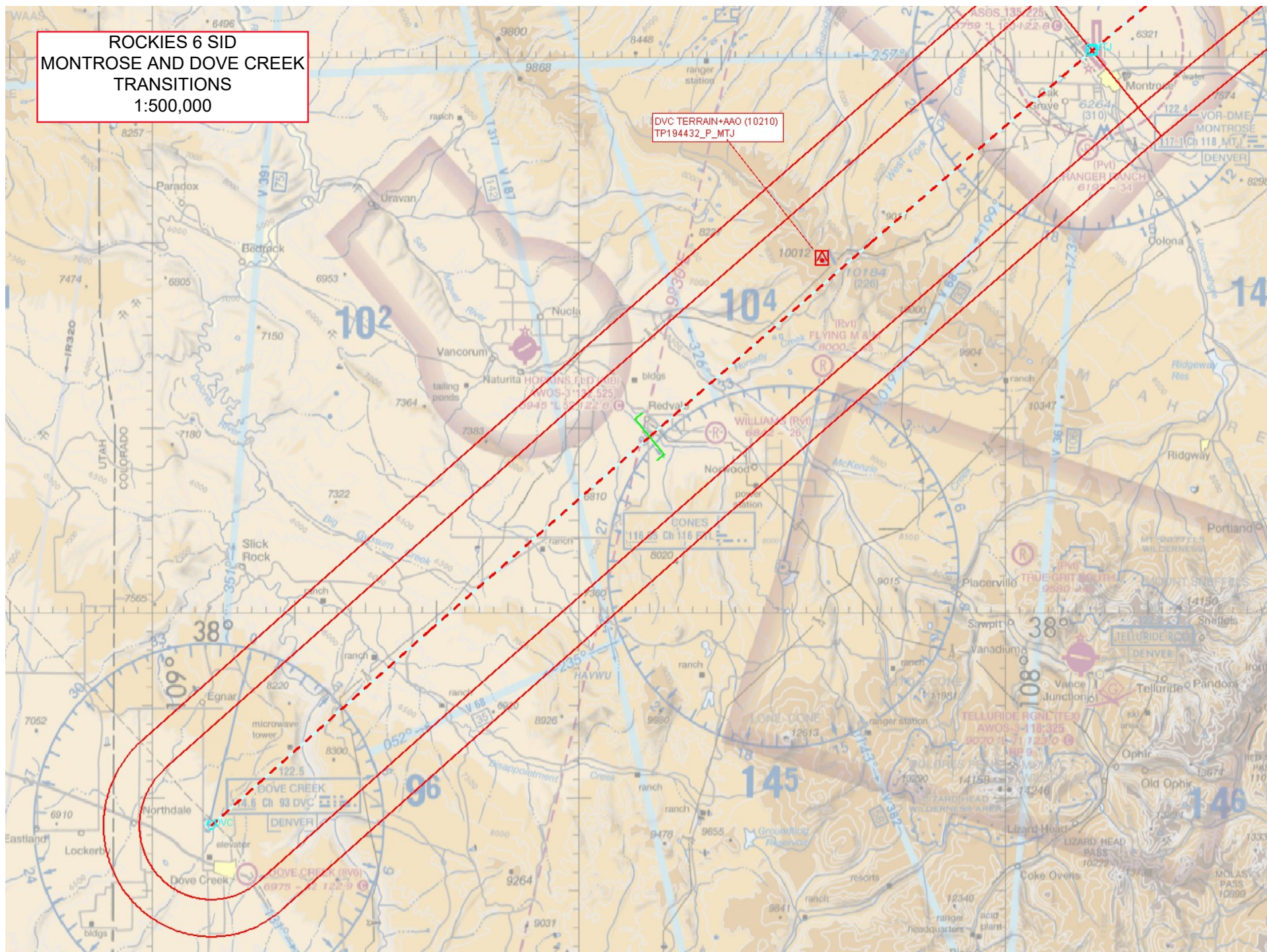
TEHRU TERRAIN+AAO (14603)
TP119694_P_BOBBA



ROCKIES 6 SID
MONTROSE AND DOVE CREEK
TRANSITIONS
1:500,000

DVC TERRAIN+AAO (10210)
TP194432_P_MTI

ROCKIES 6 SID
MONTROSE AND DOVE CREEK
TRANSITIONS
1:500,000



ROCKIES 6 SID
BLUE MESA TRANSITION
1:500,000

ROCKIES 6 SID
BLUE MESA TRANSITION
1:500,000

HBU TERRAIN+AAO (14623)
TP212927_P_BOBBA

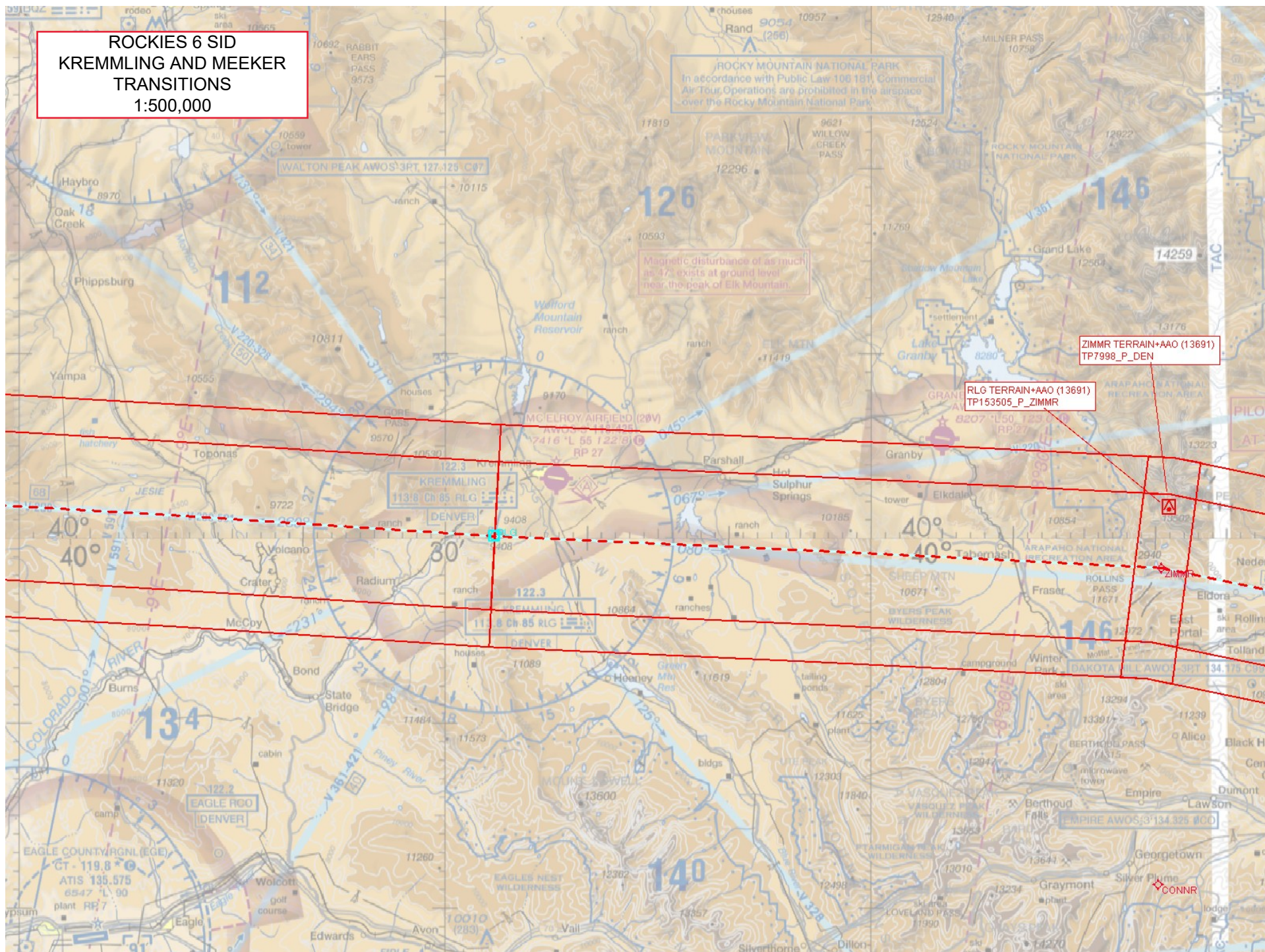
BALD MNTN AWOS-3 132.05 TDM

MONARCH PASS AWOS-3 124.175 MYP

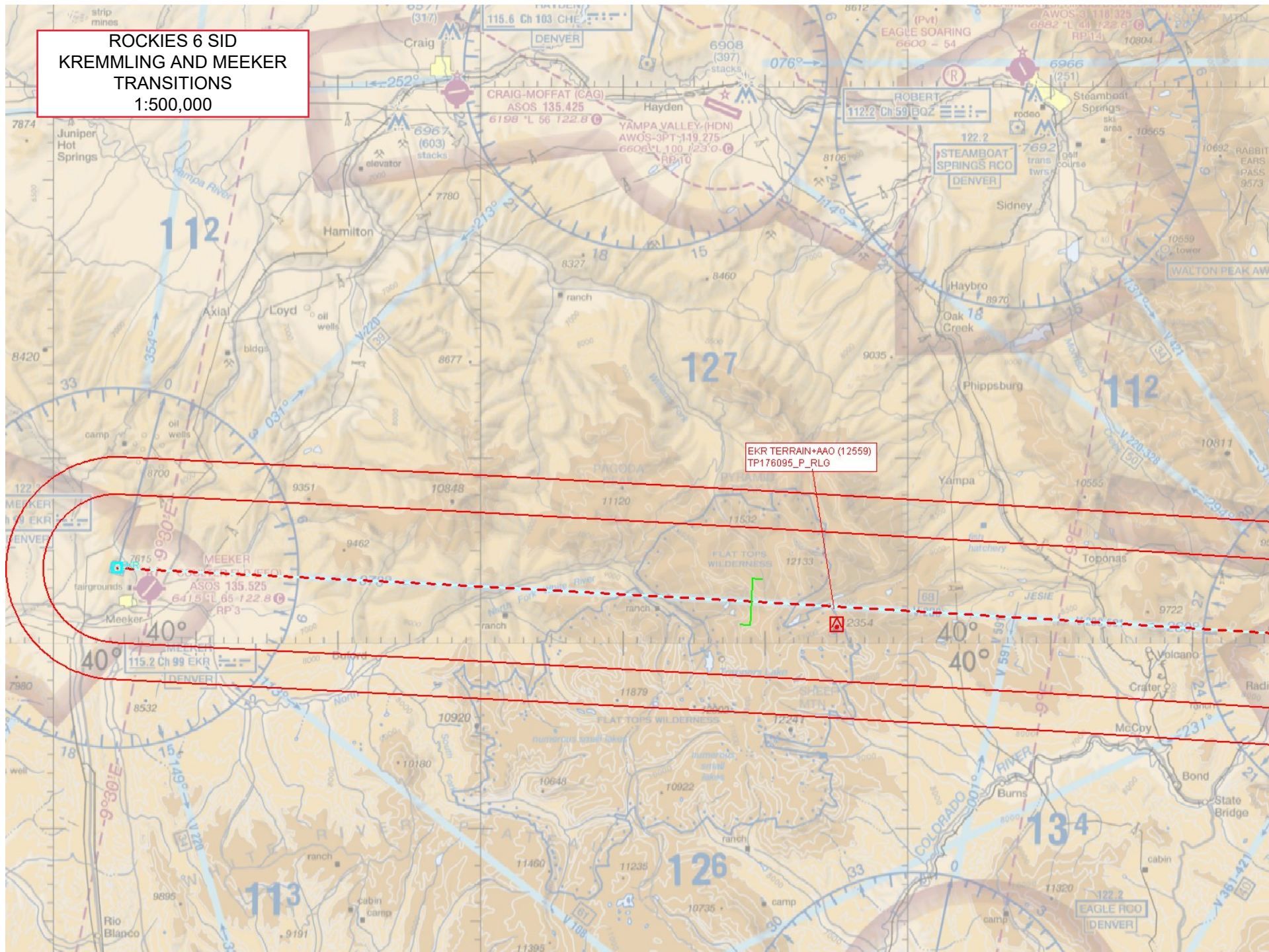
SALIDA/HARRIETT ALEXANDER FLD (ANK)
AWOS-3PT 133.85

Map details include: Crested Butte, Taylor Park, Poncha Springs, Salida, Hartsel, Garfield, Montezuma, and various passes like Independence Pass, Cottonwood Pass, and Monarch Pass. The map also shows the Blue Mesa and Gunnison-Crested Butte National Monuments.

ROCKIES 6 SID
KREMMLING AND MEEKER
TRANSITIONS
1:500,000



ROCKIES 6 SID
KREMMLING AND MEEKER
TRANSITIONS
1:500,000



ROCKIES 6 SID
RED TABLE TRANSITION
1:500,000

NOTICE
PILOTS ARE REQUESTED TO AVOID
LANDING OR HOVERING
AT-TABLE MOUNTAIN FIELD SITE

CAUTION
INTENSIVE FLIGHT TRAINING
PARACHUTE / GLIDER OPS.
IN HIGH VOLUME TRAFFIC
ZONE, FOOTHILLS TO 125
ENL TO BJC AT OR BELOW
17,500 MSL
CTC N PRACTICE AREA ON J23.75
See NOTAMS/Supplement
for Class D eff hrs

CAUTION
INTENSIVE STUDENT PILOT TRAINING AREA
CTC SW PRACTICE AREA ON J22.75
See NOTAMS/Supplement
for Class D/E (etc) eff hrs

CAUTION
INTENSIVE STUDENT PILOT TRAINING AREA
CTC SE PRACTICE AREA ON J22.75
See NOTAMS/Supplement
for Class D/E (etc) eff hrs

DBL TERRAIN+AAO (14462)
TP227218_P_CONNRR

CONNRR TERRAIN+AAO (13796)
TP7446_P_DEN

**ROCKIES 6 SID
RED TABLE TRANSITION**

1:500,000

NOTICE
PILOTS ARE REQUESTED TO AVOID LANDING OR HOVERING AT-TABLE MOUNTAIN FIELD SITE

CAUTION
INTENSIVE FLIGHT TRAINING PARACHUTE / GLIDER OPS IN HIGH VOLUME TRAFFIC ZONE, FOOTHILLS TO 125 ENL TO BJC AT OR BELOW 17,500 MSL CTC N PRACTICE AREA ON J-23.75
See NOTAMS/Supplement for Class D eff hrs

**DBL TERRAIN+AAO (14462)
TP227218_P_CONNRR**

**CONNRR TERRAIN+AAO (13796)
TP7446_P_DEN**

CAUTION
INTENSIVE STUDENT PILOT TRAINING AREA CTC SW PRACTICE AREA ON J-22.75
See NOTAMS/Supplement for Class D/E (etc) eff hrs

INTENSIVE STUDENT PILOT TRAINING AREA CTC SE PRACTICE AREA ON J-22.75
See NOTAMS/Supplement for Class D/E (etc) eff hrs

**ROCKIES 6 SID
RED TABLE TRANSITION**

1:500,000

NOTICE
PILOTS ARE REQUESTED TO AVOID
LANDING OR HOVERING
AT-TABLE MOUNTAIN FIELD SITE

CAUTION
INTENSIVE FLIGHT TRAINING
PARACHUTE / GLIDER OPS.
IN HIGH VOLUME TRAFFIC
ZONE, FOOTHILLS TO 125,
ENL TO BJC AT OR BELOW
17,500 MSL
CTC N PRACTICE AREA ON J-23.75
See NOTAMS/Supplement
for Class D eff hrs

DBL TERRAIN+AAO (14462)
TP227218_P_CONNRR

CONNRR TERRAIN+AAO (13796)
TP7446_P_DEN

CAUTION
INTENSIVE STUDENT PILOT TRAINING AREA
CTC SW PRACTICE AREA ON J-22.75
See NOTAMS/Supplement
for Class D/E (etc) eff hrs

INTENSIVE STUDENT PILOT TRAINING AREA
CTC SE PRACTICE AREA ON J-22.75
See NOTAMS/Supplement
for Class D/E (etc) eff hrs

**ROCKIES 6 SID
RED TABLE TRANSITION**

1:500,000

NOTICE
PILOTS ARE REQUESTED TO AVOID
LANDING OR HOVERING
AT-TABLE MOUNTAIN FIELD SITE

CAUTION
INTENSIVE FLIGHT TRAINING
PARACHUTE / GLIDER OPS.
IN HIGH VOLUME TRAFFIC
ZONE, FOOTHILLS TO 125,
ENL TO BJC AT OR BELOW
17,500 MSL
CTC N PRACTICE AREA ON J-23.175
See NOTAMS/Supplement
for Class D eff hrs

DBL TERRAIN+AAO (14462)
TP227218_P_CONNRR

CONNRR TERRAIN+AAO (13796)
TP7446_P_DEN

CAUTION
INTENSIVE STUDENT PILOT TRAINING AREA
CTC SW PRACTICE AREA ON J-22.75
See NOTAMS/Supplement
for Class D/E (etc) eff hrs

INTENSIVE STUDENT PILOT TRAINING AREA
CTC SE PRACTICE AREA ON J-22.75
See NOTAMS/Supplement
for Class D/E (etc) eff hrs

ROCKIES 6 SID
RED TABLE TRANSITION
1:500,000

NOTICE
PILOTS ARE REQUESTED TO AVOID
LANDING OR HOVERING
AT-TABLE MOUNTAIN FIELD SITE

CAUTION
INTENSIVE FLIGHT TRAINING
PARACHUTE / GLIDER OPS
IN HIGH VOLUME TRAFFIC
ZONE, FOOTHILLS TO 125
ENL TO BJC AT OR BELOW
17,500 MSL
CTC N PRACTICE AREA ON J23.75
See NOTAMS/Supplement
for Class D eff hrs

DBL TERRAIN+AAO (14462)
TP227218_P_CONNRR

CONNRR TERRAIN+AAO (13796)
TP7446_P_DEN

CAUTION
INTENSIVE STUDENT PILOT TRAINING AREA
CTC SW PRACTICE AREA ON J22.75

INTENSIVE STUDENT PILOT TRAINING AREA
CTC SE PRACTICE AREA ON J22.75

ROCKIES 6 SID
RED TABLE TRANSITION
1:500,000

NOTICE
PILOTS ARE REQUESTED TO AVOID
LANDING OR HOVERING
AT-TABLE MOUNTAIN FIELD SITE

CAUTION
INTENSIVE FLIGHT TRAINING
PARACHUTE / GLIDER OPS
IN HIGH VOLUME TRAFFIC
ZONE, FOOTHILLS TO 125
ENL TO BJC AT OR BELOW
17,500 MSL
CTC N PRACTICE AREA ON J23.75
See NOTAMS/Supplement
for Class D eff hrs

DBL TERRAIN+AAO (14462)
TP227218_P_CONNR

CONNR TERRAIN+AAO (13796)
TP7446_P_DEN

CAUTION
INTENSIVE STUDENT PILOT TRAINING AREA
CTC SW PRACTICE AREA ON J22.75

INTENSIVE STUDENT PILOT TRAINING AREA
CTC SE PRACTICE AREA ON J22.75

ROCKIES 6 SID
RED TABLE TRANSITION
1:500,000

