

Flight Procedures Cover Page	Task Action: FLIGHT CHECK	Task Type: IAP	Estimated Chart Date: 04/20/2023	APWS Task ID: 111F026498DE476EA82A5B5D981520AC	APWS Project ID: 2E0CF8E01F8C4633A12C24DE09CD7500
Procedure: RNAV (GPS) RWY 6 AMDT 2C		Enroute: NO	Specialist: Dougherty, Steven		Agreement Number:
Airport ID: KFIN		Airport City: PALM COAST		State: FL	
Facility ID:	Facility Type:	Flight Inspection Remark Type: New FC Slot			
<p>Procedure Comments: REASON FOR PROJECT: CLEAR NTM 2/8929, RESTORED LPV AND LNAV/VNAV MINIMUMS.</p> <p>ABBREVIATED AMENDMENT.</p> <p>ACTIVE AIRPORT DATA USED.</p> <p>NEW CRC REMAINDER DA1AA447.</p> <p>CONTACT JASON E. KRETSCHMER, AJV-A421, 405-954-4019</p> <p style="text-align: center;"><i>Digitally signed by</i> JASON KRETSCHMER Dec 01, 2022</p>					

QUALITY
20
CHECKED

QUALITY
41
CHECKED

FIPC BASIC FORM									
PROCEDURE: RNAV (GPS) RWY 6 AMDT 2C				AIRPORT NAME: FLAGLER EXEC		AIRPORT ID: KFIN		SPECIAL CONTROL NO: AG-12-020-22	
FAC ID: KFIN06.02			CITY: PALM COAST			ST: FL		ORIG CHART DATE: 04/20/2023	
DFL TYPE: PROC/S		THIRD PARTY: <input type="checkbox"/> YES		EST. TIME ON SITE: 0.4		REIMB. NUMBER:		PTS TASK ID: 111F026498DE476EA82A5B5D981520AC	
PREFLIGHT NOTES									
REVIEWER:						DATE:			
COMMENTS:						CHECK ONE:			
						<input type="checkbox"/> FLT CK REQ <input type="checkbox"/> NFCR <input type="checkbox"/> REJECT			
								YES	NO
						CPV COMPLETE?		X	
PROCEDURE RESULTS									
INSPECTION DATE: 01/19/2023		CREW #: VN364		N #: N78		INSTRUMENT PROCEDURE STATUS: <input checked="" type="checkbox"/> SAT <input type="checkbox"/> SAT W/CHANGES <input type="checkbox"/> UNSAT		ARINC CODING: <input checked="" type="checkbox"/> SAT <input type="checkbox"/> SAT/GOLD <input type="checkbox"/> UNSAT	
FLIGHT INSPECTOR SIGNATURE: kevin riese @ 01/19/2023 15:40				PRINTED NAME: RIESE, KEVIN JOHN				NOTAM INITIATED? <input type="checkbox"/> YES <input checked="" type="checkbox"/> NO	
FLIGHT INSPECTOR REMARKS: RNAV (GPS) RWY 6 AMDT 2C completed satisfactory.									
IN-FLIGHT OBSTACLE REPORT									
OBSTRUCTION ID #:		COORDINATES OR LOCATION:		GNSS ALTITUDE (MSL):		BAROMETRIC ALTITUDE (MSL):		HEIGHT ABOVE GROUND LEVEL:	

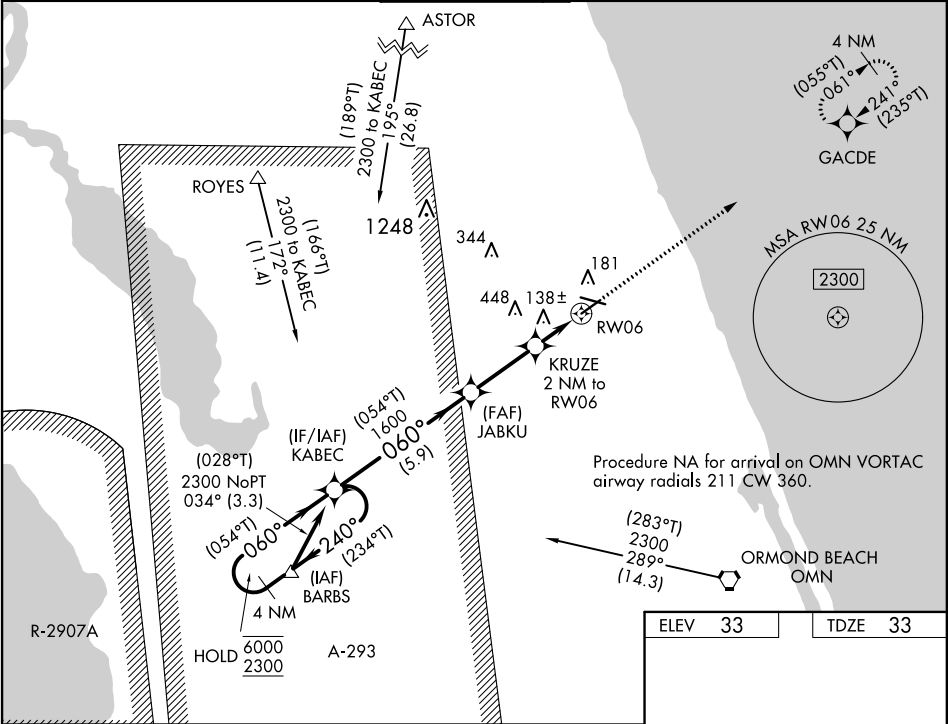
WAAS CH 49209 W06A	APP CRS 060°	Rwy Idg TDZE Apt Elev	5001 33 33
--	------------------------	-----------------------------	---------------------------------------

RNAV (GPS) RWY 6

FLAGLER EXEC (FIN)

RNP APCH-GPS.		MISSED APPROACH: Climb to 2300 direct GACDE and hold.	
<div><div></div><div></div></div> <div>Circling NA to Rwy 18W and 36W. Circling Rwy 11, 29 NA at night. Rwy 6 helicopter visibility reduction below 3/4 SM NA. For uncompensated Baro-VNAV systems, LNAV/VNAV NA below -15°C or above 54°C.</div>			

ATIS 128.325	DAYTONA APP CON 125.8 269.075	FLAGLER TOWER ★ 118.95 (CTAF) 0	GND CON 121.75	CLNC DEL 121.75	UNICOM 123.0
------------------------	---	---	--------------------------	---------------------------	------------------------



<div>4 NM Holding Pattern (234°T) 6000 ← 240° 2300 → 060° (054°T) GP 3.00° TCH 41</div>		<div>KABEC</div>		<div>JABKU 1600</div>		<div>KRUZE 2 NM to RW06 1 NM to RW06 RW06</div>		<div>2300 ↑ GACDE ✦</div>	
		<div>5.9 NM</div>		<div>2.8 NM</div>		<div>1 NM</div>		<div>1 NM</div>	
CATEGORY	A	B		C		D			
LPV DA	312-7 ⁷ / ₈ 279 (300-7 ⁷ / ₈)								
LNAV/VNAV DA	292-3 ³ / ₄ 259 (300-3 ³ / ₄)								
LNAV MDA	400-1 367 (400-1)								
CIRCLING	500-1	467 (500-1)	760-2 727 (800-2)		760-2 727 (800-2)		760-2 ¹ / ₄ 727 (800-2 ¹ / ₄)		

OLD

PALM COAST, FLORIDA

AL-6440 (FAA)

22083

WAAS CH 49209 W06A	APP CRS 060°	Rwy Idg TDZE Apt Elev 5001 32 33
--	------------------------	--

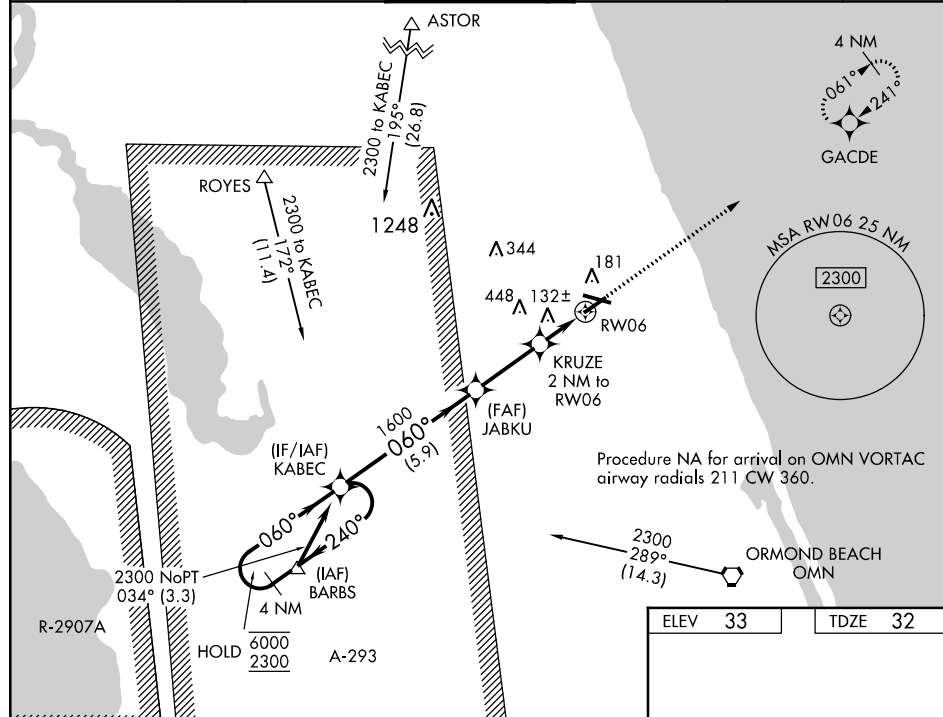
RNAV (GPS) RWY 6 FLAGLER EXEC (FIN)

RNP APCH.

▼ Circling Rwy 11, 29 NA at night. For uncompensated Baro-VNAV systems, LNAV/VNAV NA below -15°C or above 54°C. Circling NA to Rwy 18W and 36W.

MISSED APPROACH: Climb to 2300 direct GACDE and hold.

ATIS 128.325	DAYTONA APP CON 125.8 269.075	FLAGLER TOWER ★ 118.95 (CTAF) 0	GND CON 121.75	CLNC DEL 121.75	UNICOM 123.0
------------------------	---	--	--------------------------	---------------------------	------------------------

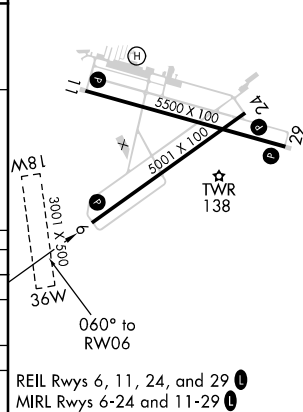


SE-3, 06 OCT 2022 to 03 NOV 2022

SE-3, 06 OCT 2022 to 03 NOV 2022

4 NM Holding Pattern 6000 ← 240° 2300 → 060° GP 3.00° TCH 40		KABEC JABKU 1600 KRUZE 2 NM to RW06 *1 NM to RW06 *700 RW06		2300 ↑ *LNAV only.	GACDE ✦
		5.9 NM 2.8 NM 1 NM 1 NM			
CATEGORY	A	B	C	D	
LPV DA	282-7/8		250 (300-7/8)		
LNAV/ VNAV DA	282-7/8		250 (300-7/8)		
LNAV MDA	400-1		368 (400-1)		
C CIRCLING	500-1 467 (500-1)		760-2 727 (800-2)	760-2 1/4 727 (800-2 1/4)	

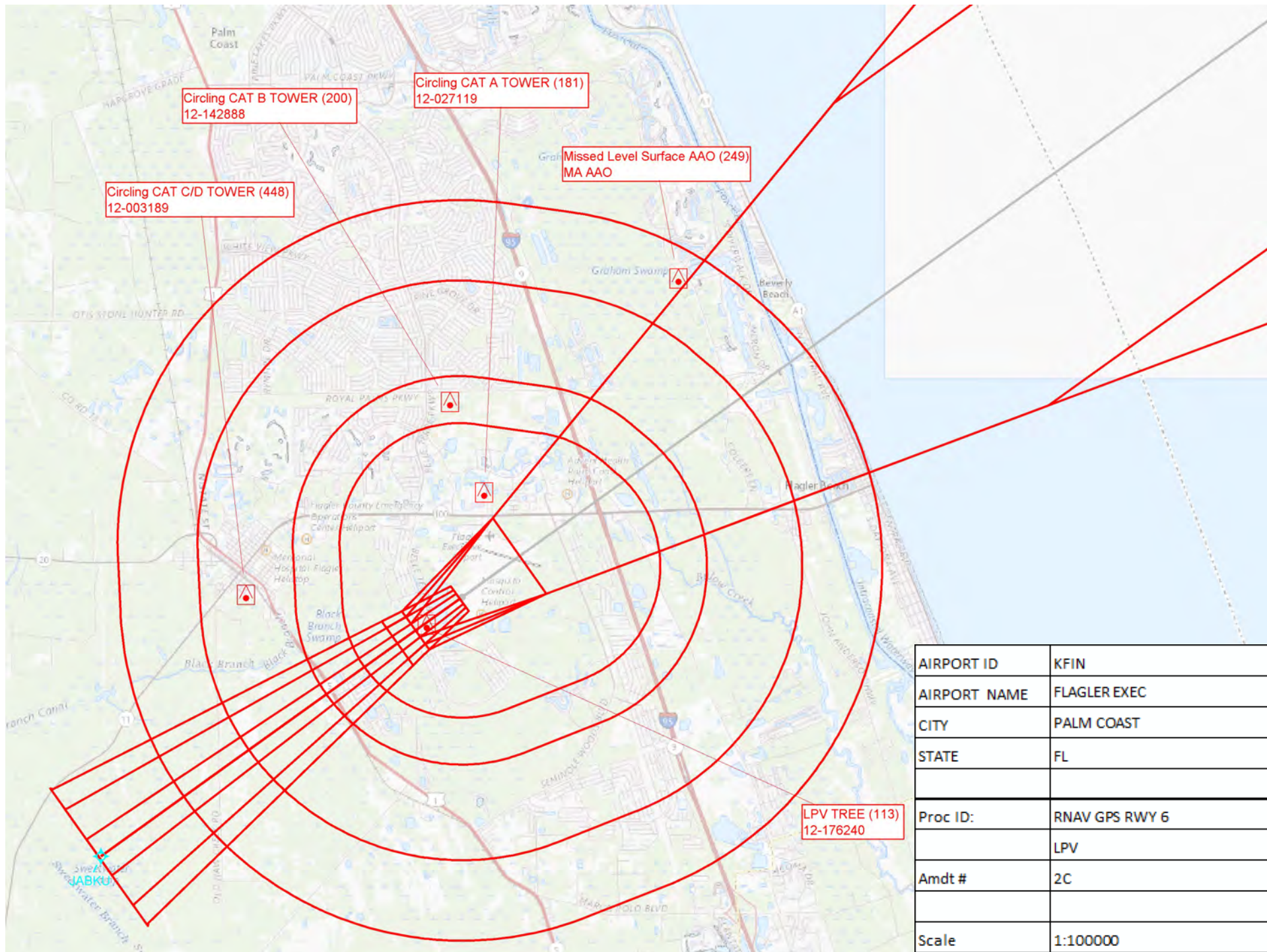
REIL Rwy's 6, 11, 24, and 29
MIRL Rwy's 6-24 and 11-29



PALM COAST, FLORIDA
Amdt 2B 30DEC21

29°28'N-81°12'W

FLAGLER EXEC (FIN) **RNAV (GPS) RWY 6**



AIRPORT ID	KFIN
AIRPORT NAME	FLAGLER EXEC
CITY	PALM COAST
STATE	FL
Proc ID:	RNAV GPS RWY 6
	LPV
Amdt #	2C
Scale	1:100000

