

Flight Procedures Cover Page	Task Action: FLIGHT CHECK	Task Type: IAP	Estimated Chart Date: 08/07/2025	APWS Task ID: 10567AFFE3074AF1AE41CC2624E6390A	APWS Project ID: FB1BB9238C424F0392844E304A886648
Procedure: ILS OR LOC RWY 10 AMDT 9		Enroute: NO	Specialist: Malone, Tevar		Agreement Number:
Airport ID: KDPA			Airport City: CHICAGO/WEST CHICAGO		State: IL
Facility ID: DPA	Facility Type: ILS	Flight Inspection Remark Type: New FC Slot			
<div>Procedure Comments: ACTIVE AIRPORT AND RUNWAY DATA USED.  Decommission Runway (RWY) 10, Outer Marker (OM) LYLLE.  CONTACT ERIC SUSKI, AJV-A330 MANAGER, 405-954-7331</div> <div>QUALITY 41 CHECKED</div>					

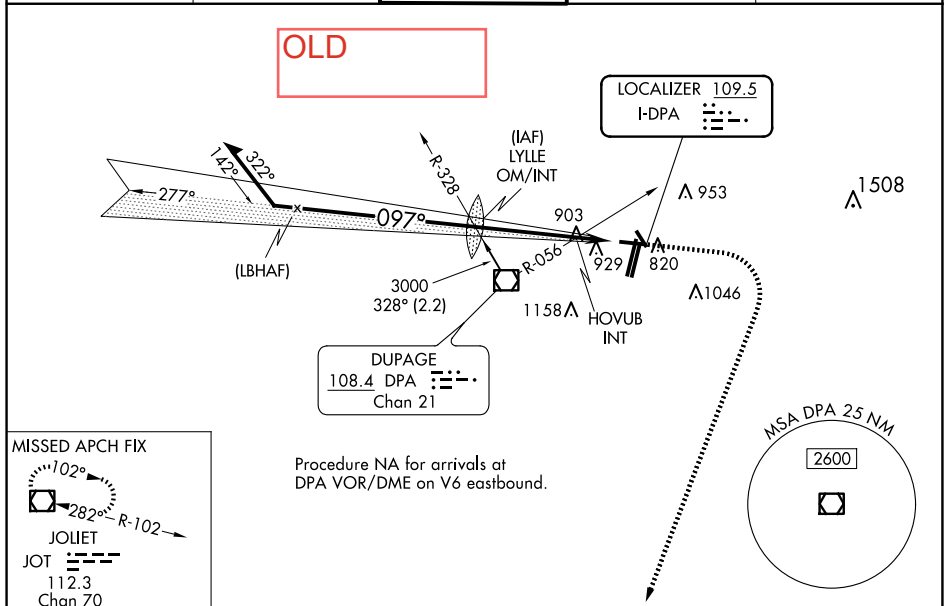
LOC I-DPA <b><u>109.5</u></b>	APP CRS <b>097°</b>	Rwy Idg <b>4750</b> TDZE <b>756</b> Apt Elev <b>759</b>
----------------------------------	------------------------	---

ILS or LOC RWY 10  
DUPAGE (DPA)

**T** When local altimeter setting not received, use Chicago/Aurora altimeter setting: increase S-ILS 10 DA to 993 feet; increase all MDA 40 feet and visibility S-LOC 10 Cats C/D and HOVUB INT minimums S-LOC 10 Cats C/D  $\frac{1}{2}$  SM, and Circling and HOVUB INT minimums Circling Cats C/D  $\frac{1}{4}$  SM. Circling Rwy 15, 28, 33 NA at night.

**MISSED APPROACH:** Climb to 1200 then climbing right turn to 2600 direct JOT VOR/DME and hold.

ATIS 132.075	CHICAGO APP CON 133.5 349.0	DUPAGE TOWER 120.9 257.8	GND CON 121.8	CLNC DEL 119.75
-----------------	--------------------------------	-----------------------------	------------------	--------------------



Remain within 10 NM

3000

277°

097°

GS 3.00° TCH 50

2600

2501

LYLLE OM/INT

HOVUB INT

\*1300

3.6 NM

1.7 NM

\*LOC only.  
\*1340 when using Chicago/Aurora altimeter setting.

1200

2600

JOT

ELEV 759

TDZE 756

097°

3339 x 100

4750 x 75

20R

20L

2571 x 150

2571 x 100

4431 x 100

2L

TWR 895

MIRL Rwy 15-33 and 2R-20L

TDZ/CL Rwy 2L

RLS Rwy 10

REL Rwy 10, 15, 28 and 33

HIRL Rwy 10-28 and 2L-20R

CATEGORY	A	B	C	D
S-ILS 10		956-3/4	200 (200-3/4)	
S-LOC 10	1300-1	544 (600-1)	1300-1 5/8	544 (600-1 5/8)
CIRCLING	1300-1 541 (600-1)	1360-1 601 (700-1)	1460-2 701 (800-2)	1460-2 1/4 701 (800-2 1/4)

HOVUB INT MINIMUMS (DUAL VOR RECEIVERS REQUIRED)

S-LOC 10	1220-1	464 (500-1)	1220-1 3/8	464 (500-1 3/8)
CIRCLING	1260-1 501 (600-1)	1360-1 601 (700-1)	1460-2 701 (800-2)	1460-2 1/4 701 (800-2 1/4)

FAF to MAP 5.3 NM

Knots	60	90	120	150	180
Min:Sec	5:18	3:32	2:39	2:07	1:46

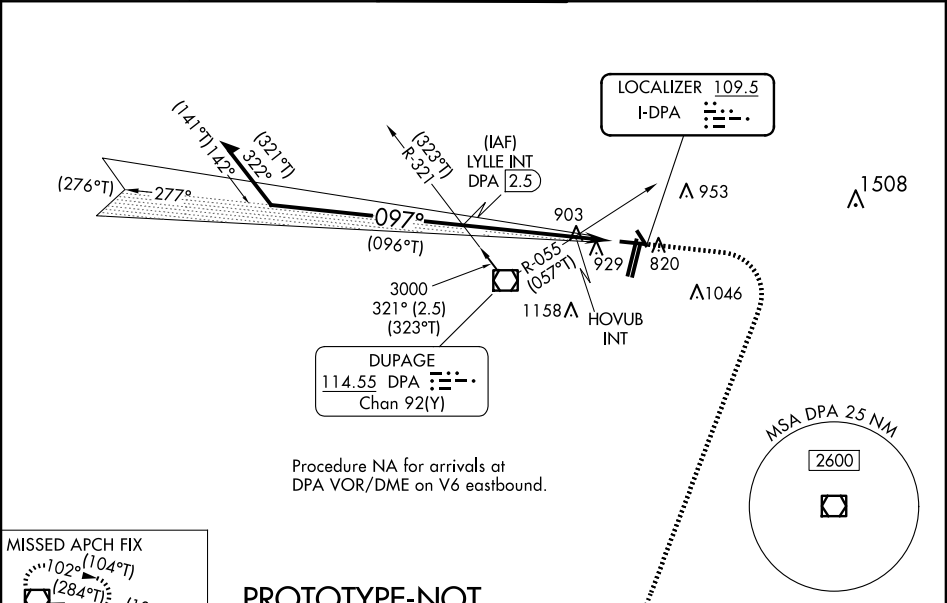
LOC I-DPA <b>109.5</b>	APP CRS <b>097°</b>	Rwy Idg TDZE Apt Elev	<b>4750</b> <b>756</b> <b>759</b>
---------------------------	------------------------	-----------------------------	---

ILS or LOC RWY 10  
DUPAGE (DPA)

**⚠** Circling Rwy 15, 28, 33 NA at night. When local altimeter setting not received, use ARR altimeter setting and increase S-ILS 10 DA to 993 feet; increase all MDAs 40 feet; and Circling visibility Cat C/D ¼ SM.

MISSED APPROACH: Climb to 1200 then climbing right turn to 2600 direct JOT VOR/DME and hold.

ATIS <b>132.075</b>	CHICAGO APP CON <b>133.5 349.0</b>	DUPAGE TOWER <b>120.9 257.8</b>	GND CON <b>121.8</b>	CLNC DEL <b>119.75</b>
------------------------	---------------------------------------	------------------------------------	-------------------------	---------------------------



MISSED APCH FIX

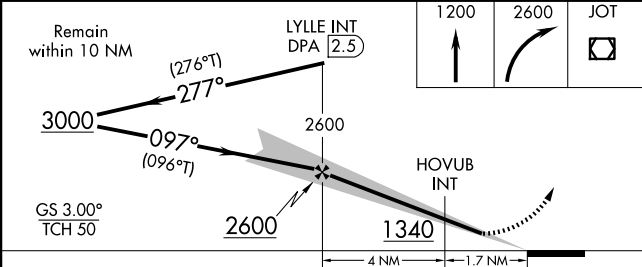
JOLIET

JOT

112.3

Chan 70

PROTOTYPE-NOT FOR NAVIGATION



ELEV 759	TDZE 756
----------	----------

TWR 895

MIRL Rwy 15-33 and 2R-20L

TDZ/CL Rwy 2L

RLS Rwy 10

REIL Rwy 10, 15, 28 and 33

HIRL Rwy 10-28 and 2L-20R

FAF to MAP 5.6 NM

Knots	60	90	120	150	180
Min:Sec	5:36	3:44	2:48	2:14	1:52



KDPA-DUPAGE  
CHICAGO/WEST CHICAGO, IL  
ILS OR LOC RWY 10  
AMDT 9  
ALL SEGMENTS  
1:500,000

LOC LYLLE to HOVUB TERRAIN+AAO (1034)  
TP733

PT 10 NM\_1 to LYLLE TERRAIN+AAO (1221)  
TP1426925

PT Initial:ProcedureTurn PT 10 NM\_1 Maneuvering TOWER (1386)  
17-001565

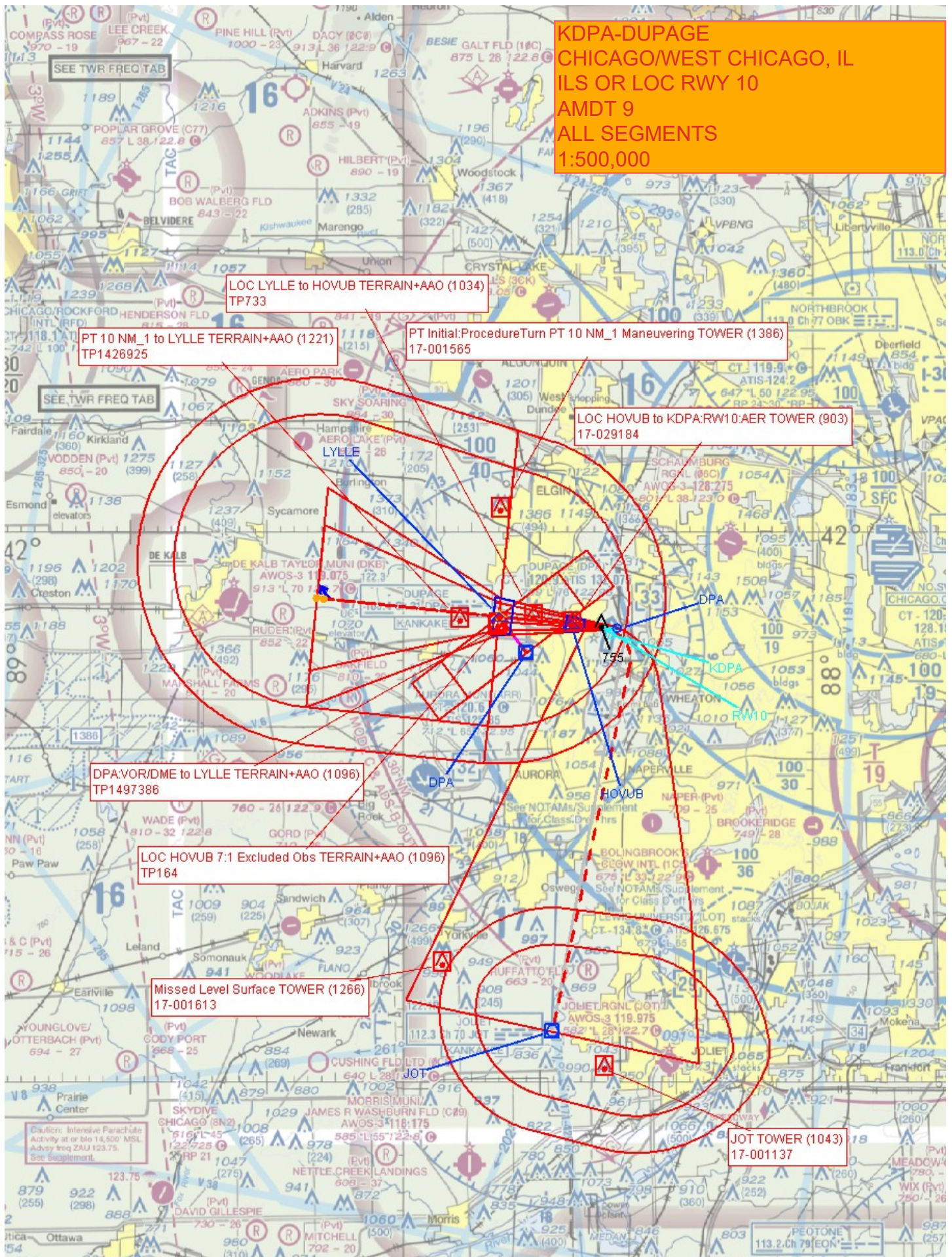
LOC HOVUB to KDPA:RWY10:AER TOWER (903)  
17-029184

DPA:VOR/DME to LYLLE TERRAIN+AAO (1096)  
TP1497386

LOC HOVUB 7:1 Excluded Obs TERRAIN+AAO (1096)  
TP164

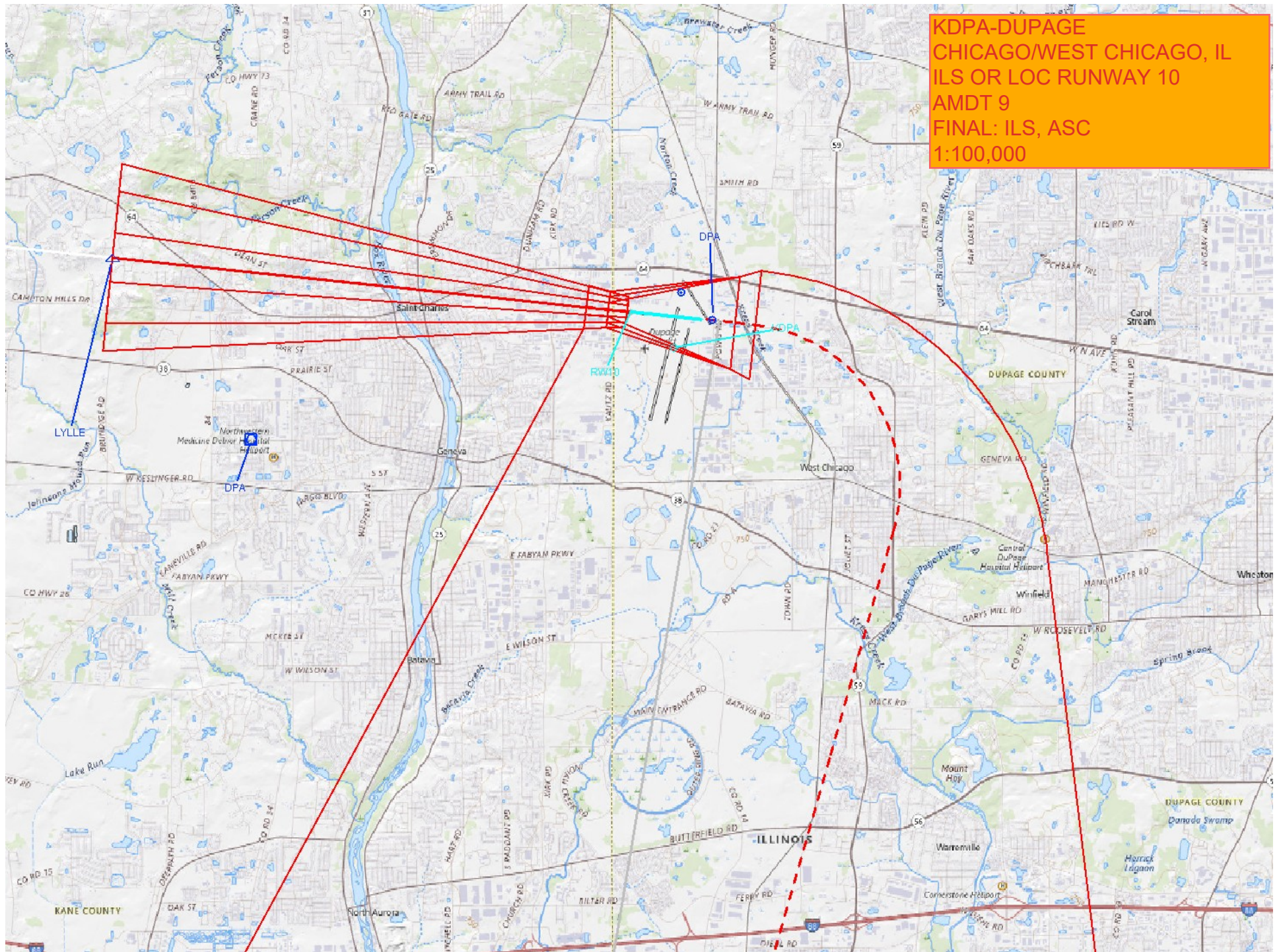
Missed Level Surface TOWER (1266)  
17-001613

JOT TOWER (1043)  
17-001137



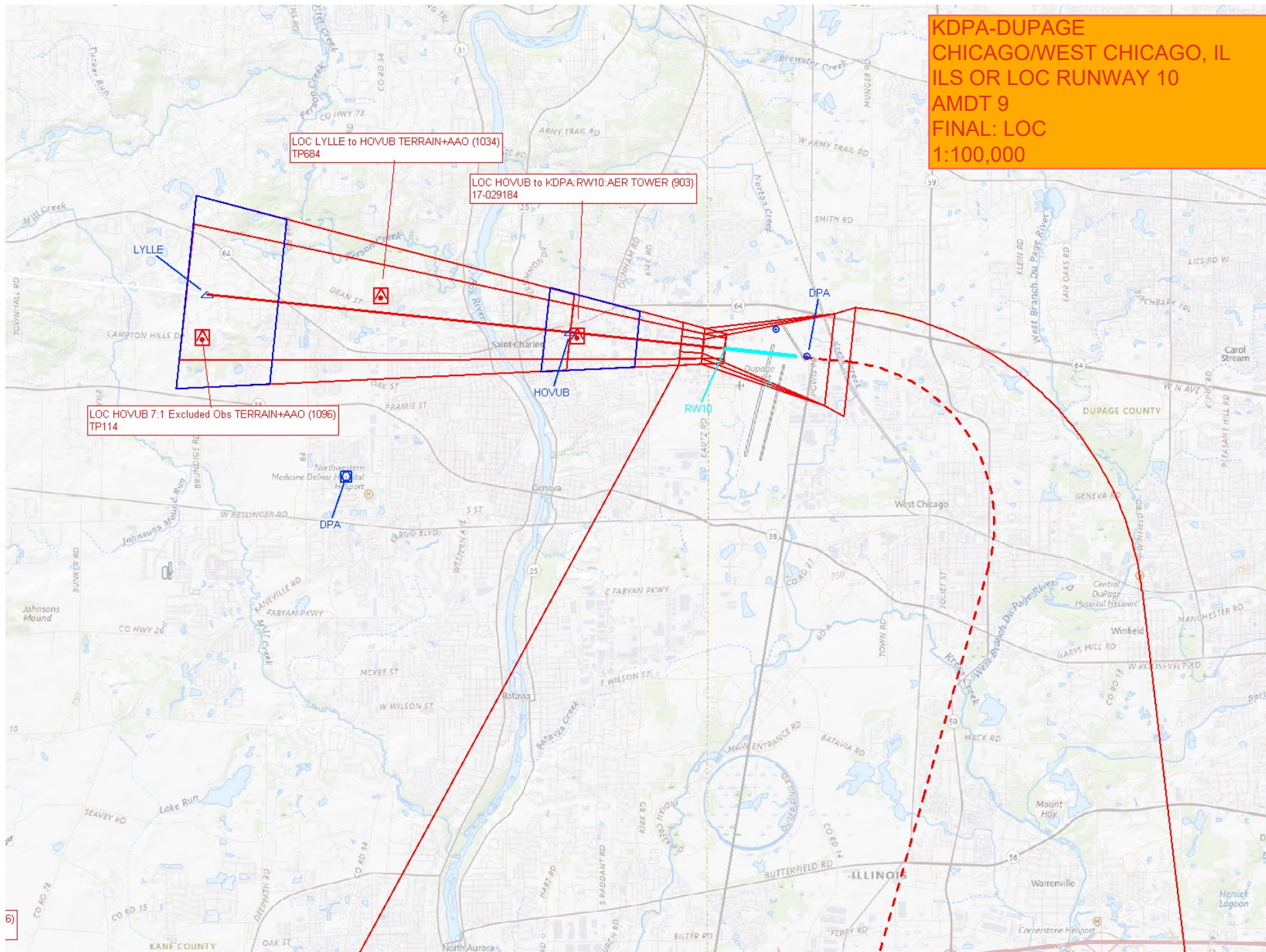


KDPA-DUPAGE  
CHICAGO/WEST CHICAGO, IL  
ILS OR LOC RUNWAY 10  
AMDT 9  
FINAL: ILS, ASC  
1:100,000





KDPA-DUPAGE  
CHICAGO/WEST CHICAGO, IL  
ILS OR LOC RUNWAY 10  
AMDT 9  
FINAL: LOC  
1:100,000





KDPA-DUPAGE  
CHICAGO/WEST CHICAGO, IL  
ILS OR LOC RUNWAY 10  
AMDT 9  
CIRCLING CAT A-D  
1:100,000

