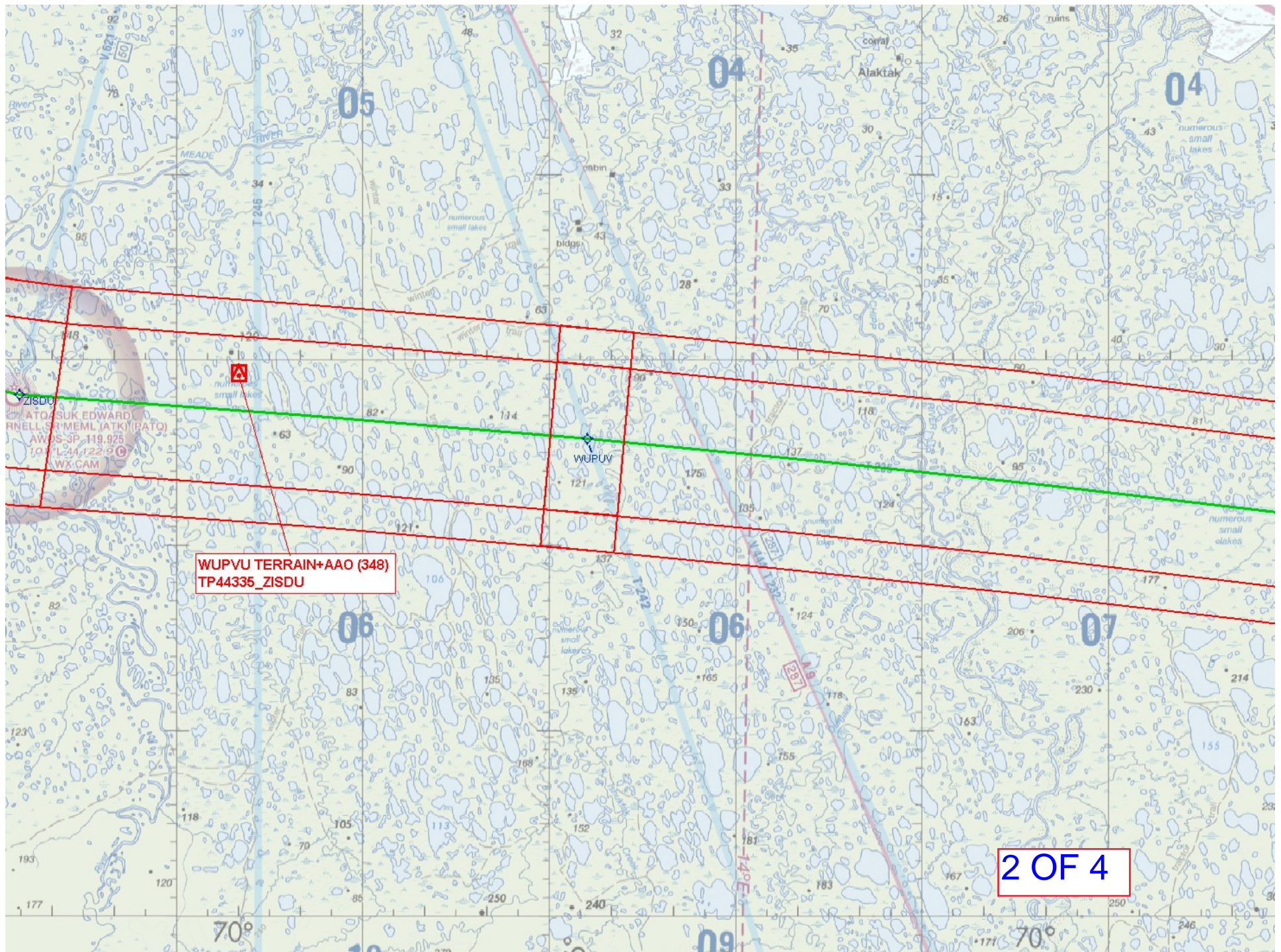
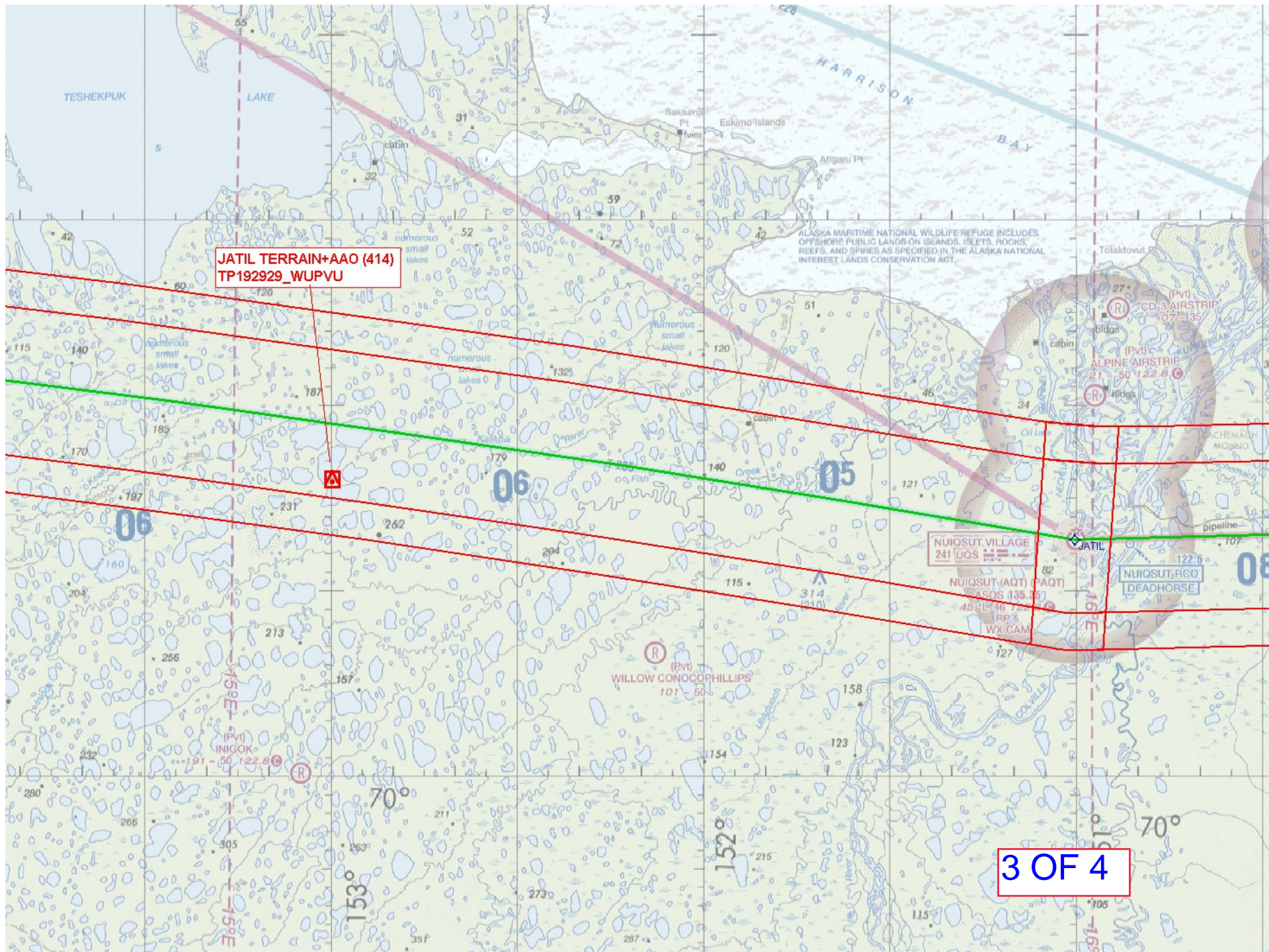


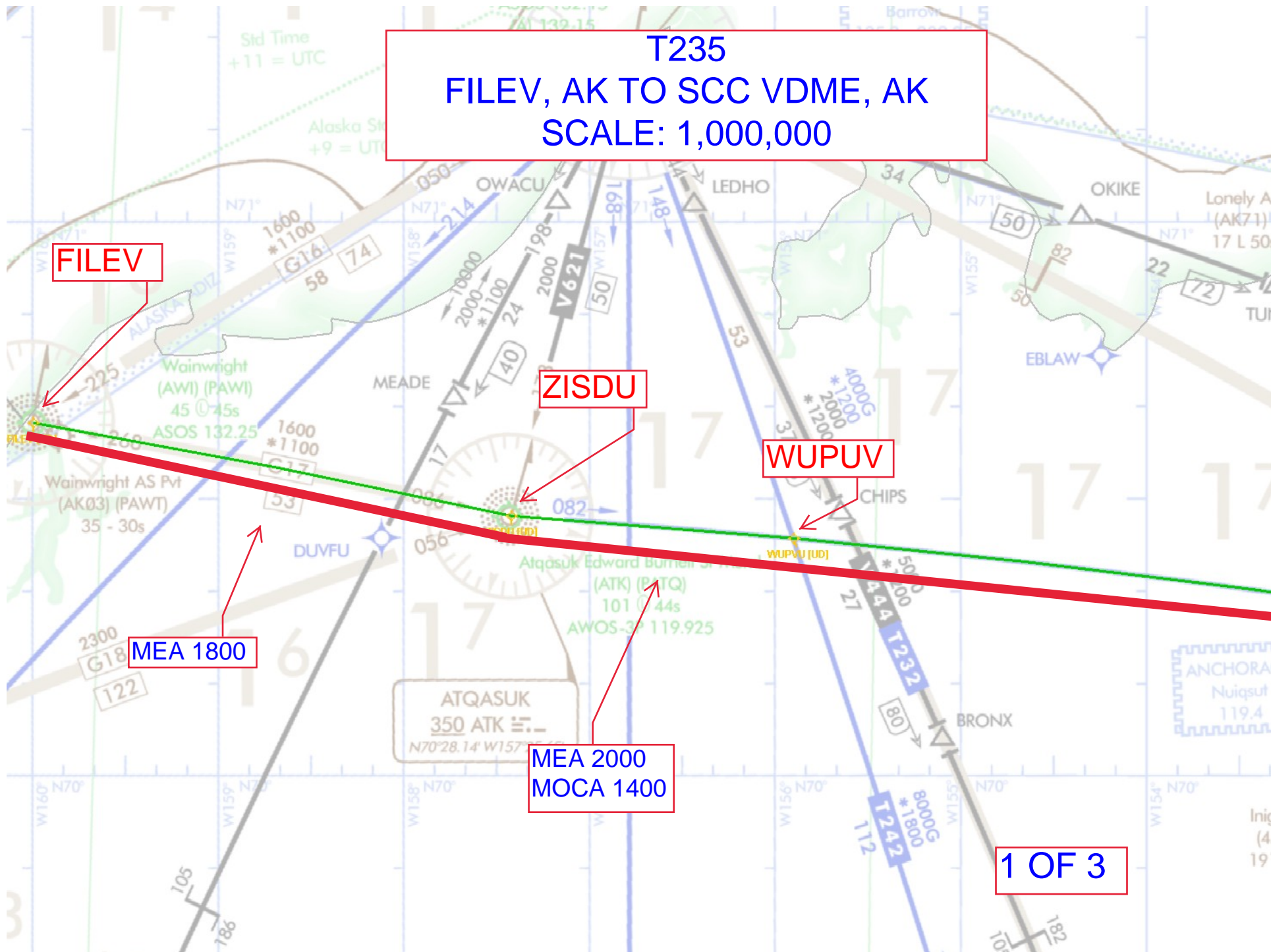
Flight Procedures Cover Page	Task Action: FLIGHT CHECK	Task Type: Segment	Estimated Chart Date: 11/03/2022	APWS Task ID: 102FB49709CB4AA9903033624286D891	APWS Project ID: D94253853EB344EC98DF2F1C298B564F
Procedure: T235 FILEV, AK TO SCC VDME, AK		Enroute: YES	Specialist: Gibson, Taylor		Agreement Number:
Airport ID:			Airport City:		State:
Facility ID:	Facility Type:	Flight Inspection Remark Type: New FC Slot			
<p>Procedure Comments: AIRWAY STARTING POINT: FILEV, AK 703816.81N/1595941.10W</p> <p>DOCKET #: 19-AAL-65</p> <p>CONTACT: ALLAN WILL (AJV-A423) 405-954-6103</p> <p>9/16/2022: THIS IS A CORRECTED COPY OF THE FORM APPROVED ON 8/04/2022. FAQIR 8260-2: 1. FIX ESTABLISHED TO ADD T235 TO FIX USE.</p>					

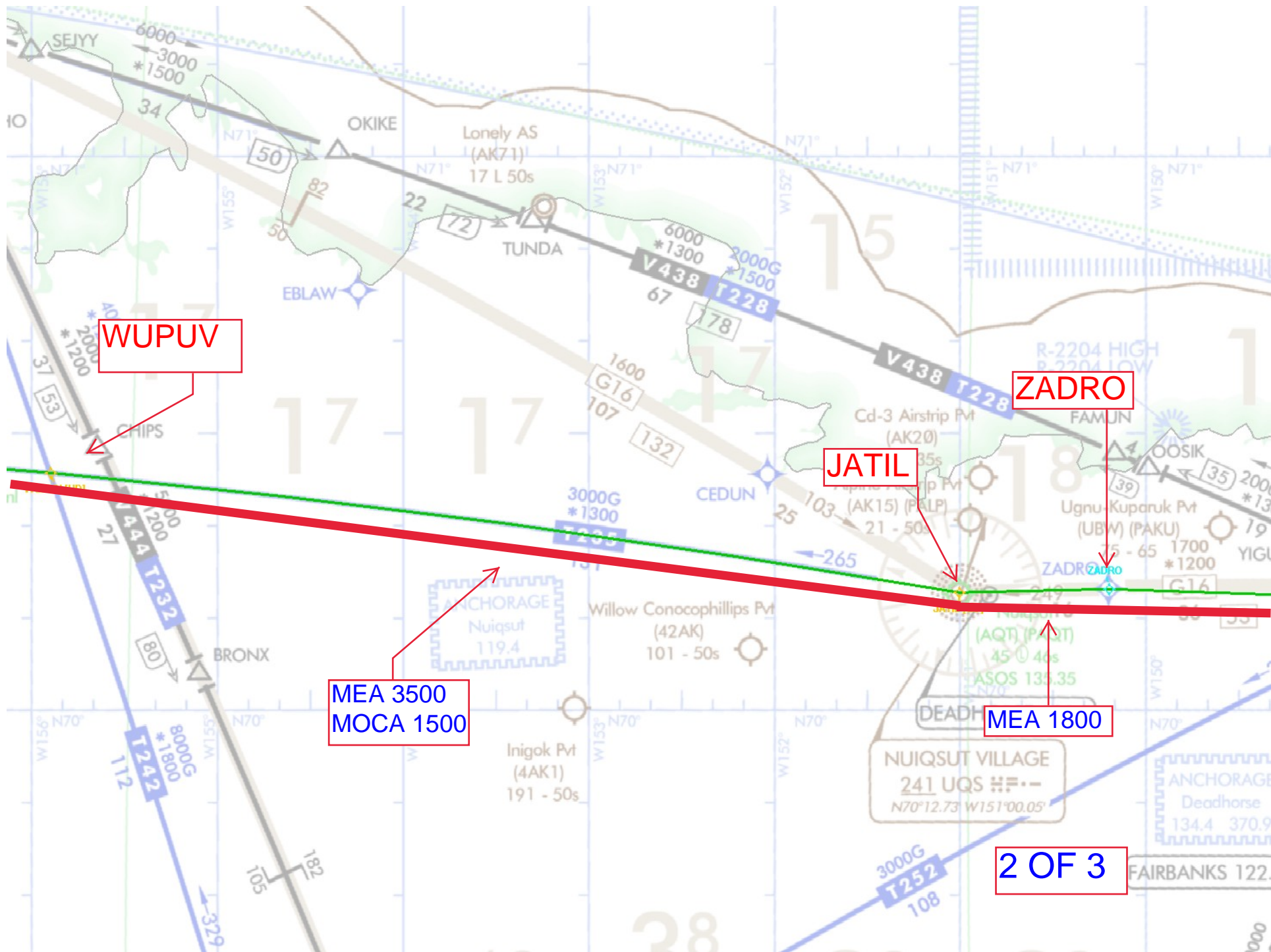






T235
FILEV, AK TO SCC VDME, AK
SCALE: 1,000,000





WUPUV

ZADRO

JATIL

MEA 3500
MOCA 1500

MEA 1800

2 OF 3

