


<b>Flight Procedure Tracking Form</b>		<b>Action:</b> AMENDMENT	<b>Task Type:</b> IAP	<b>Date Open:</b> 09/30/2019	<b>Task #:</b> 2019093035180801003	<b>Request #:</b> 20190930351808
<b>Procedure:</b> NDB RWY 20 AMDT 1C			<b>Airport ID:</b> KRUQ	<b>Airport:</b> MID-CAROLINA RGNL		<b>Reimbursable #:</b> NO
<b>City:</b> SALISBURY	<b>ST:</b> NC	<b>GPS #:</b>	<b>Estimated Chart Date:</b> 03/26/2020		<b>FICO #:</b>	
<b>Fac ID:</b> RUQ		<b>Fac. Type:</b> NDB		<b>Specialist:</b> STEVEN DOUGHERTY		
<b>Procedure Review</b>						
	<b>Rec'd</b>	<b>Rel'd</b>	<b>Full Name</b>	<b>Comments</b>		
<b>Lead:</b>	09/30/2019					
<b>QA:</b>						
<b>Liaison:</b>						
<b>Procedure Comments:</b> ENROUTE-NON <b>Remark Type:</b> INFORMATION						
<p>PROCESSED IAW AIRCRAFT OPERATIONS GROUP (AJW-33) MEMO, OCTOBER 3, 2018, SUBJECT: FLIGHT INSPECTION REVIEW NOT REQUIRED.</p> <p>P-NOTAM.</p> <p>CIRCLING ICON.</p> <p>PENDING DATA USED.</p> <p>DAVID DANNER, AJV-A421, 405-954-5077.</p>						



OLD

SALISBURY, NORTH CAROLINA

AL-5551 (FAA)

17229

LOM RU	APP CRS	Rwy Idg	5501
275	202°	TDZE	772
		Apt Elev	772

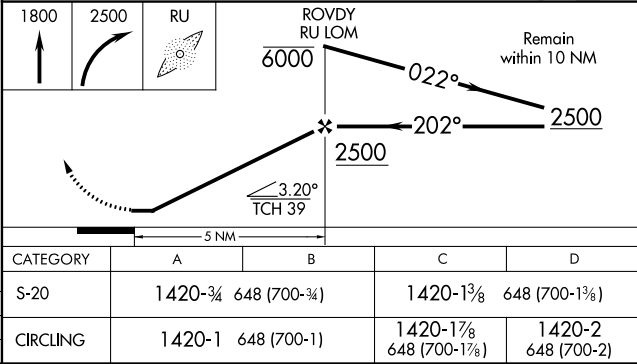
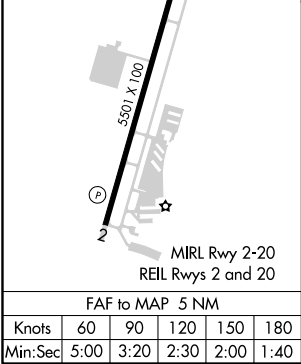
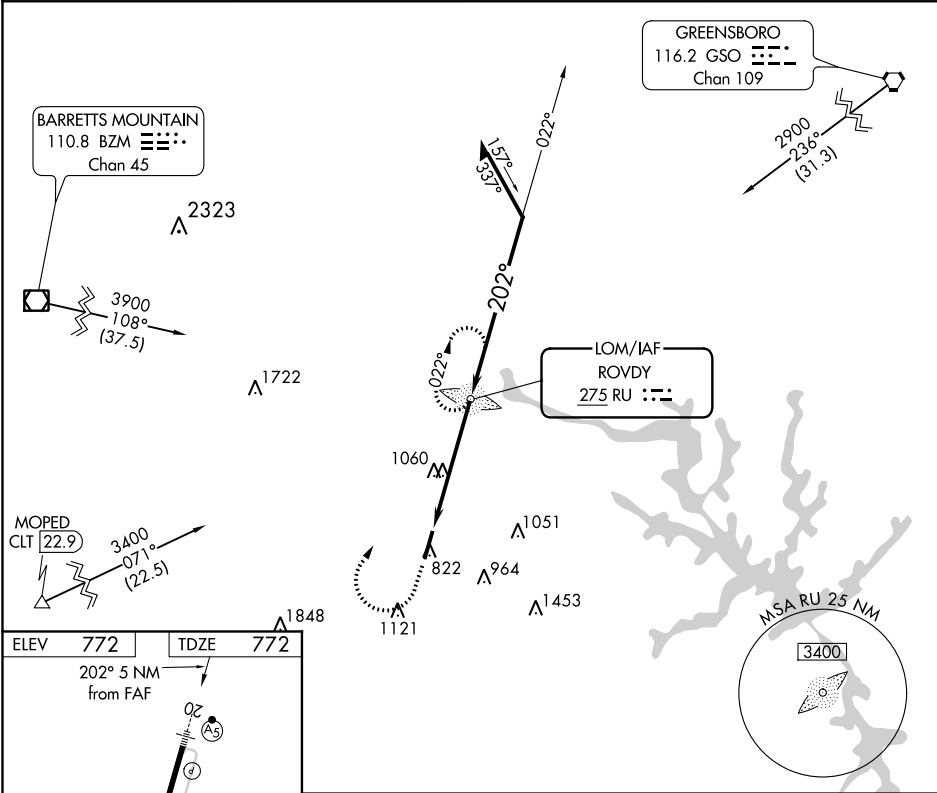
NDB RWY 20  
MID-CAROLINA RGNL (RUQ)

When local altimeter setting not received, use Lexington altimeter setting and increase all MDA 40 feet, increase S-20 Cats C and D, and Circling Cat C visibility  $\frac{1}{8}$  SM and Circling Cat D  $\frac{1}{4}$  SM. For inoperative ALS, increase Cat D visibility to 1 $\frac{1}{2}$  SM. For inop ALS when using Lexington altimeter setting increase Cat D visibility to 2 SM.



MISSED APPROACH:  
Climb to 1800 then climbing right turn to 2500 direct ROVDY LOM and hold.

AWOS-3 118.175	CHARLOTTE APP CON 128.325 307.8	CLNC DEL 127.35	UNICOM 122.725 (CTAF)
-------------------	------------------------------------	--------------------	--------------------------



SALISBURY, NORTH CAROLINA  
Amdt 1B 17AUG17

35°39'N-80°31'W

MID-CAROLINA RGNL (RUQ)  
NDB RWY 20

SE-2, 17 AUG 2017 to 14 SEP 2017

SE-2, 17 AUG 2017 to 14 SEP 2017