

Flight Procedures Cover Page	Task Action: FLIGHT CHECK	Task Type: IAP	Estimated Chart Date: 02/20/2025	APWS Task ID: 0F343C76C12443F6AAC1F3D20D9B55B1	APWS Project ID: 9DCD1BE3C4A347318791F7C648A1E001
Procedure: RNAV (GPS) RWY 19 AMDT 3		Enroute: NO	Specialist: Juoni, Joshua		Agreement Number:
Airport ID: KRMG			Airport City: ROME		State: GA
Facility ID:	Facility Type:	Flight Inspection Remark Type: New FC Slot			
<div>Procedure Comments:</div> <div>UTILIZED PENDING DATA FOR KRMG AIRPORT AND RWY 19.</div> <div>RWY 19 EXTENSION.</div> <div>APPROVAL LETTER FOR GREATER THAN .20 DEGREE DIFFERENCE BETWEEN GPA AND VGSI.</div> <div>CONTACT ERIC SUSKI: AJV-A431, 405-954-7331.</div> <div>05/05/2025: THIS IS AN UPDATED COPY OF THE FORM DEVELOPED ON 08/06/2024.</div> <div>REQUIRED EFFECTIVE DATE: CHANGED FROM ROUTINE TO 06/12/2025.</div> <div>QUALITY 16 CHECKED</div> <div>QUALITY 38 CHECKED</div> <div>QUALITY 8 CHECKED</div>					



Federal Aviation Administration

Memorandum

Date:

To: Manager, Flight Technologies and Procedures Division
THRU: Manager, Flight Procedure Implementation & Oversight Branch

From: Manager, IFP Team, AJV-4

Subject: **ACTION:** Approval Request

RNAV (GPS) RWY 19, RICHARD B RUSSELL REGIONAL, ROME, GA

Approach is established using the glide path angle of 3.25 degrees, which exceeds .20 degrees between the VGSI angle of 3.00. IAW 8260.3F, Section 2-6, paragraph 2-6-2 request approval to increase glide path angle to 3.25 degrees.

The RWY 19 VDA of 3.00 degrees was raised to 3.25 degrees to mitigate VGS penetrations on the approach. A 3.25 degree glide path angle mitigates all obstacles in the VGS as verified by TARGETS.

A new PAPI is being installed within the next six months and will increase the PAPI GPA to 3.25 degrees to align with the design GPA. Additionally, negotiations with the landowner to mitigate the remaining VGS penetrations further to the north are expected to be fully demolished in the next few years. Those penetrations were the primary reason for increasing the design GPA/TCH with the anticipation that the trees would be cleared in the coming months to years.

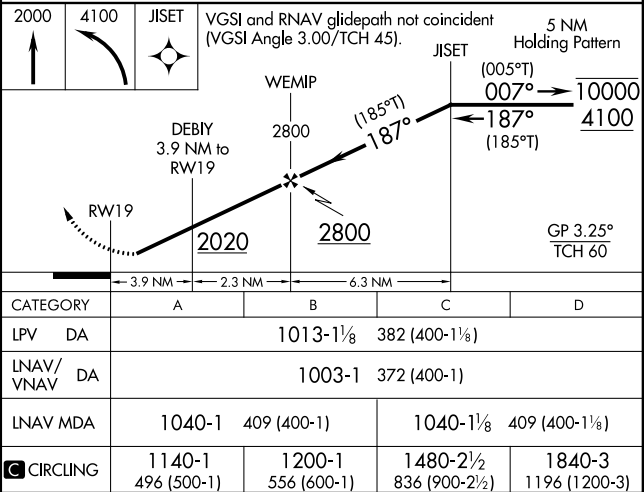
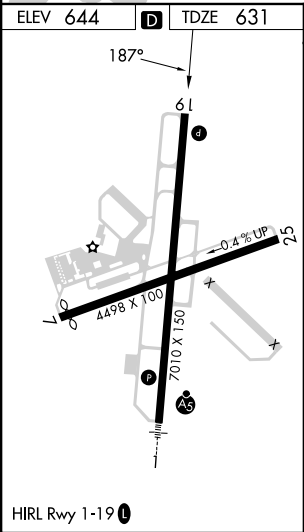
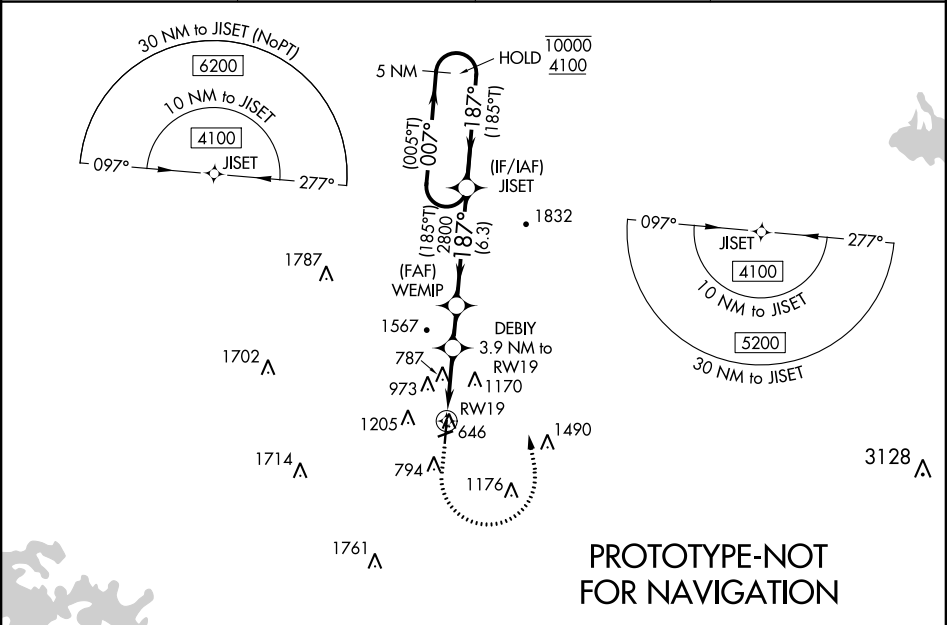
Digitally signed by
CASEY D HILL
May 05, 2025

WAAS CH 48811 W19A	APP CRS 187°	Rwy ldg TDZE Apt Elev 7010 631 644
--	------------------------	--

RNAV (GPS) RWY 19

RICHARD B RUSSELL RGNL - J H TOWERS FLD (R.M.G.)

RNP APCH - GPS.		MISSED APPROACH: Climb to 2000 then climbing left turn to 4100 direct JISET and hold.	
ASOS 119.925	ATLANTA CENTER 124.5 270.325	GCO 121.725	UNICOM 122.725 (CTAF) 1



RNAV (GPS) RWY 19

ROME, GEORGIA

AL-855 (FAA)

23110

WAAS CH 48811 W19A	APP CRS 187°	Rwy Idg TDZE Apt Elev	6006 635 644
--	------------------------	-----------------------------	---

RNAV (GPS) RWY 19

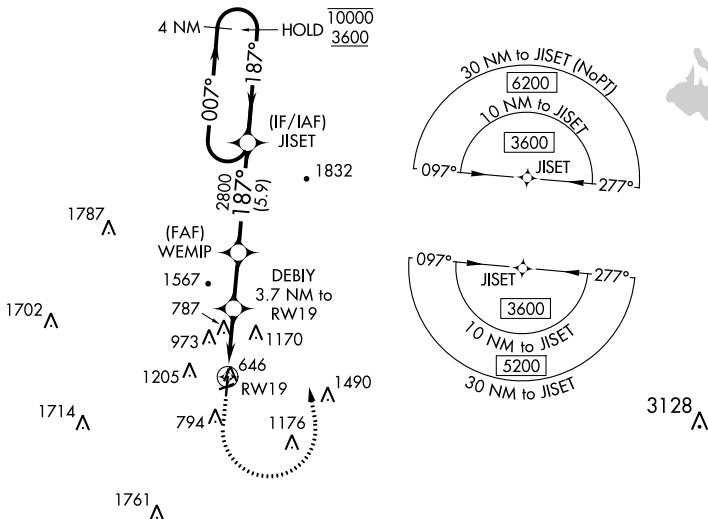
RICHARD B. RUSSELL RGNI - J.H. TOWERS FID (RMG)

RNP APCH - GPS.

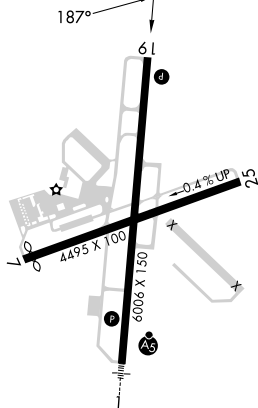
T Rwy 19 helicopter visibility reduction below $\frac{3}{4}$ SM NA. For uncompensated Baro-VNAV systems, LNAV/VNAV NA below -7°C or above 54°C. Circling NA west of Rwy 1-19 at night. Circling NA northwest of Rws 7 and 19.

MISSED APPROACH: Climb to 2000 then climbing left turn to 3600 direct JISET and hold.

ASOS 119.925	ATLANTA CENTER 124.5 270.325	GCO 121.725	UNICOM 122.725 (CTAF) 0
------------------------	--	-----------------------	-----------------------------------



ELEV 644	D	TDZE 635
----------	----------	----------

HIRL Rwy 1-19 **L**

2000 ↑	3600 ↘	JIS ET ✦				
CATEGORY	A		B		C	D
LPV DA	995-1		360 (400-1)			
LNAV/VNAV DA	1003-1		368 (400-1)			
LNAV MDA	1040-1	405 (400-1)	1040-1½		405 (400-1½)	
CIRCLING	1140-1 496 (500-1)	1200-1 556 (600-1)	1480-2½ 836 (900-2½)		1840-3 1196 (1200-3)	

ROME, GEORGIA
Amdt 2 20APR23

RICHARD B RUSSELL RGNL - J H TOWERS FLD (RMG)

34°21'N-85°10'W

RNAV (GPS) RWY 19

SE-4, 11 JUL 2024 to 08 AUG 2024

