

DME DME Assessment Results for PRICY2 path BAYNE_BULKS

Results Summary

Flyability:	Completed
DME/DME:	Completed - No Critical DMEs
Name:	Miles CTR Carpenter
Project File:	C:\Users\Miles CTR Carpenter\Desktop\FLMP May 2022 DME Evaluations\KMCO\KMCO PRICY2 STAR DME 20211115_1441 EST\KMCO PRICY2 STAR DME 211115.tgs
Output File:	C:\Users\Miles CTR Carpenter\Desktop\FLMP May 2022 DME Evaluations\KMCO\KMCO [IFPA] PRICY2 20211210_1720 EST\BAYNE_BULKS\KMCO PRICY2 RNAV STAR BAYNE BULKS 20211210_1720 EST.pdf
Procedure Name:	PRICY2
Software: DmeDmePlugin:	6.4.1
Date/Time:	12/10/2021 17:20 EST
Databases:	DTED MAX

Failures

No Failures

Warnings

No Warnings

Notes For Flight Check

None

Flight Plan

Name	Type	Lat/Lon	Altitude (ft)	VNAV Mode	Ground Speed (kts)	Turn Type	Leg Type
BAYNE	WP	N28° 03' 20.240", W082° 55' 41.520"	18000	VNAV	280	FLY_BY	TF
BULKS	WP	N27° 52' 36.120", W082° 24' 38.960"	18000	VNAV	280	FLY_BY	TF

Flyability

Flight Type:	RNAV_STAR
Selected Airport:	KMCO [IFPA]
Climb Gradient:	None assigned
Speeds:	200 Ground Speed to 11000 FT
	240 Ground Speed to 18000 FT
	260 Ground Speed to 24000 FT
	340 Ground Speed above 24000 FT
Descent During a Turn:	Allowed
VNAV Mode:	Flight Plan

DME DME Assessment Results for PRICY2 path BAYNE_BULKS

DME/DME	
RNP:	RNP 2
Flight Mode:	Manual
Line of Sight (DTED Level 0 Max):	Evaluated
Inertial Drift:	Enabled
Initial Drift:	0.558 NM
INS Drift Rate:	8.0 NM/Hour
Range Mode:	OSV
RNP Edges:	Evaluated
Min DME Range:	3.0 NM
DME Types:	DME, VOR-DME, VORTAC
DME Include Angles:	30 to 150
Critical DMEs:	Not Allowed
DoD Facilities:	Not included
Foreign Facilities:	Included
High DMEs:	Included
Low DMEs:	Included
Terminal DMEs:	Included
Flight Check DMEs:	Not selected
Higher Altitudes:	Not Evaluated
Near Maximum Altitude:	Not Evaluated
Automatic ESVs:	Not enabled
Disabled DMEs:	None

DME/DME (Continued)										
DMEs Used										
#	Name	Lat/Lon	MAGVAR	Range	Type	Source	Critical	Status	Time	Distance
1	LAL	N27° 59' 10.253", W082° 00' 50.009"	1.0 E	130	H	IFPA	NO	Enabled	83.7 %	83.7 %
2	PIE	N27° 54' 27.952", W082° 41' 03.513"	5.0 W	130	H	IFPA	NO	Enabled	71.6 %	71.6 %
3	CTY	N29° 35' 56.403", W083° 02' 55.651"	2.0 W	40	L	IFPA	NO	Enabled	59.5 %	59.5 %
4	OCF	N29° 10' 38.918", W082° 13' 34.802"	0.0 E	40	L	IFPA	NO	Enabled	83.7 %	83.7 %
5	ORL	N28° 32' 33.802", W081° 20' 06.053"	0.0 E	130	H	IFPA	NO	Enabled	83.7 %	83.7 %

Flight Check DME Selection						
Distance [NM]	Selected DMEs					Alternate
0.0	OCF	PIE	LAL	CTY	ORL	
12.3	OCF	LAL	CTY	ORL		
14.9	PIE	LAL	OCF	CTY	ORL	
17.6	OCF	LAL	ORL	PIE		
17.8	OCF	LAL	ORL			
18.6	OCF	LAL	PIE	ORL		
24.8						

Inertial Drift Segments			
#	Start Location	End Location	Length [NM]
1	N27° 54' 19.991", W082° 29' 37.536"	N27° 52' 36.120", W082° 24' 38.960"	4.7353

Available DMEs by Waypoints		
Waypoint Before	Waypoint After	DME List
BAYNE	BULKS	OCF, LAL, ORL, CTY, PIE

DME DME Assessment Results for PRICY2 path BAYNE_BULKS

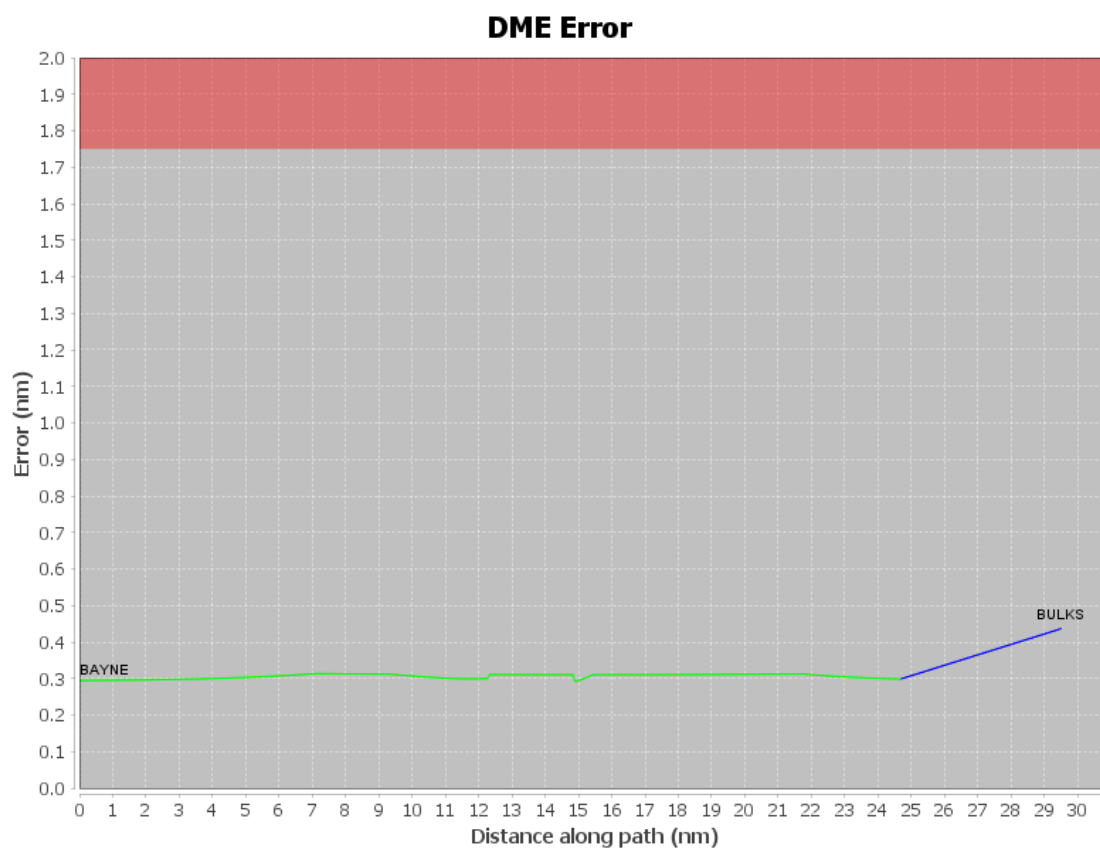
User Data Files

#	File Name
1	UserDMEsKMCO [IFPA] PRICY1 RNAV STAR_20200826_1453 EDT.udt

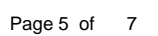
User DMEs

#	Name	Lat/Lon	MAGVAR	Range	Elevation [ft]	Frequency	Replaces	Status
1	OCF FAA 714002-25 OCF [IFPA]	N29° 10' 38.918", W082° 13' 34.802"	0.0 E	40	78.3	113.7	OCF FAA 714002-25	
ESV:		Bearing [True]: 190.0° to 235.0° Bearing [Mag]: 190.0° to 235.0°				Arc Distance: Out to 130.0 NM Altitude: 10000.0 to 20000.0 ft		
2	ORL FAA 694096-38 ORL [IFPA]	N28° 32' 33.802", W081° 20' 06.053"	0.0 E	130	101.6	112.2	ORL FAA 694096-38	
ESV:		Bearing [True]: 242.0° to 256.0° Bearing [Mag]: 242.0° to 256.0°				Arc Distance: Out to 165.0 NM Altitude: 18000.0 to 35000.0 ft		
3	MLB FAA 815809-14 MLB [IFPA]	N28° 06' 19.120", W080° 38' 06.460"	7.0 W	40	34	110.0	MLB FAA 815809-14	
ESV:		Bearing [True]: 270.0° to 331.0° Bearing [Mag]: 277.0° to 338.0°				Arc Distance: Out to 61.0 NM Altitude: 4000.0 to 17000.0 ft		
4	CTY FAA 704013-051 CTY [IFPA]	N29° 35' 56.403", W083° 02' 55.651"	2.0 W	40	33.8	112.0	CTY FAA 704013-051	
ESV:		Bearing [True]: 167.0° to 215.0° Bearing [Mag]: 169.0° to 217.0°				Arc Distance: Out to 130.0 NM Altitude: 15000.0 to 18000.0 ft		
5	OCF FAA 714002-18 OCF [IFPA]	N29° 10' 38.918", W082° 13' 34.802"	0.0 E	40	78.3	113.7	OCF FAA 714002-18	
ESV:		Bearing [True]: 117.0° to 180.0° Bearing [Mag]: 117.0° to 180.0°				Arc Distance: Out to 80.0 NM Altitude: 4000.0 to 20000.0 ft		

DME DME Assessment Results for PRICY2 path BAYNE_BULKS

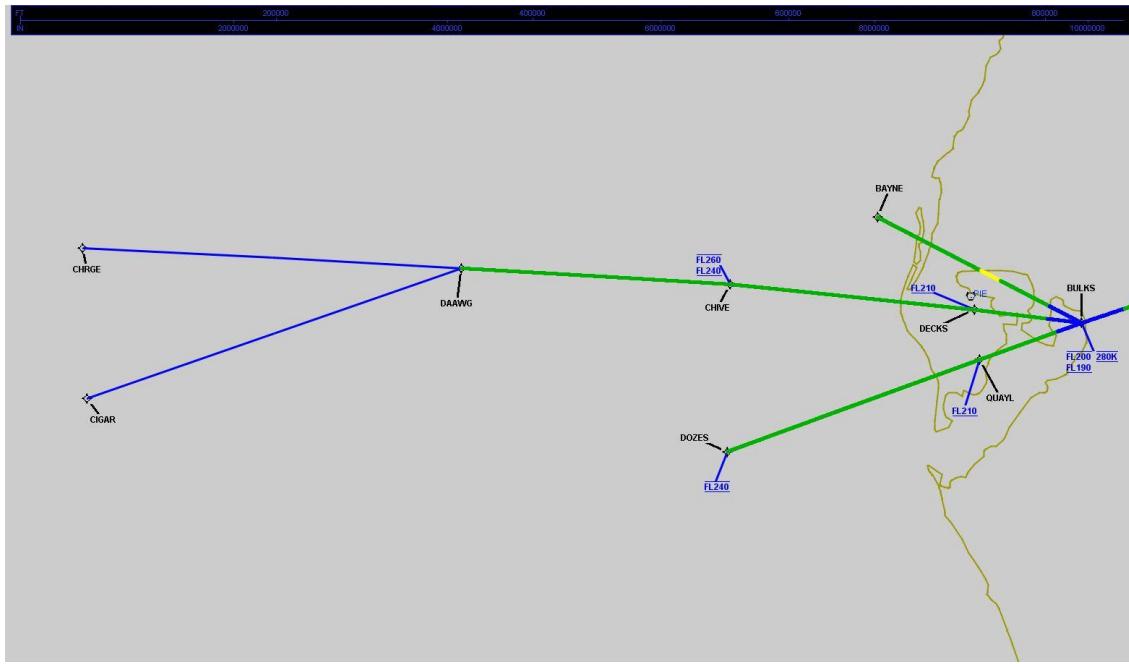


Graphic Depiction 1



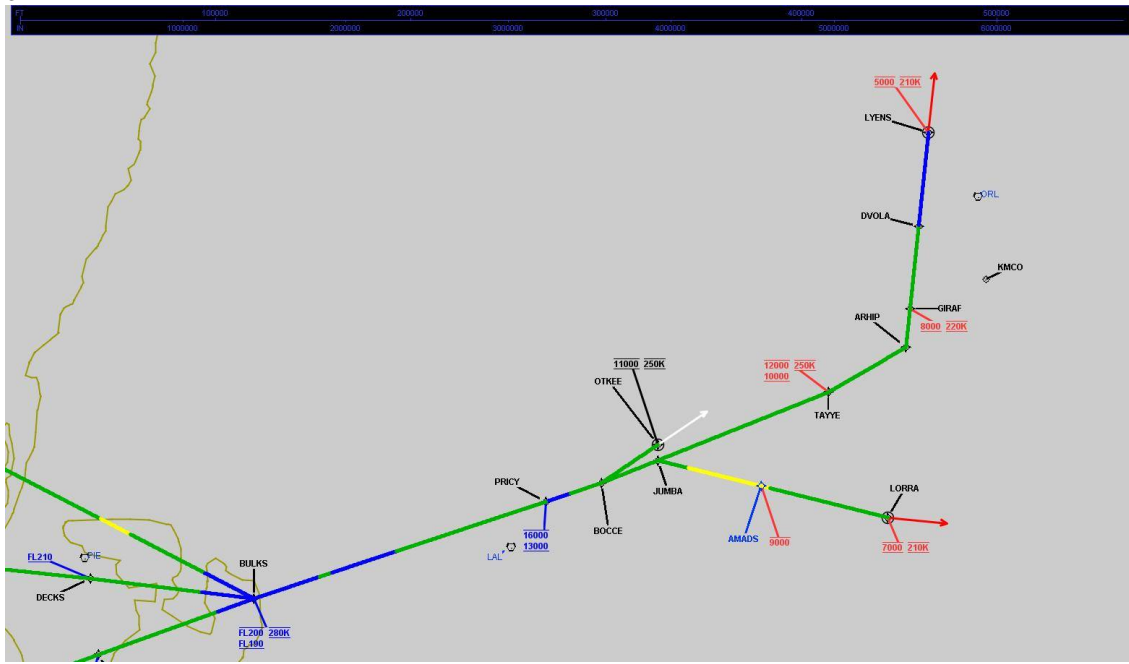
DME DME Assessment Results for PRICY2 path BAYNE_BULKS

Graphic Depiction 2



DME DME Assessment Results for PRICY2 path BAYNE_BULKS

Graphic Depiction 3



DME DME Assessment Results for PRICY2 path BOCCE_OTKEE

Results Summary

Flyability:	Completed
DME/DME:	Completed - No Critical DMEs
Name:	Miles CTR Carpenter
Project File:	C:\Users\Miles CTR Carpenter\Desktop\FLMP May 2022 DME Evaluations\KMCO\KMCO PRICY2 STAR DME 20211115_1441 EST\KMCO PRICY2 STAR DME 211115.tgs
Output File:	C:\Users\Miles CTR Carpenter\Desktop\FLMP May 2022 DME Evaluations\KMCO\KMCO [IFPA] PRICY2 20211210_1720 EST\BOCCE_OTKEE\KMCO PRICY2 RNAV STAR BOCCE OTKEE 20211210_1720 EST.pdf
Procedure Name:	PRICY2
Software: DmeDmePlugin:	6.4.1
Date/Time:	12/10/2021 17:20 EST
Databases:	DTED MAX

Failures

No Failures

Warnings

No Warnings

Notes For Flight Check

None

Flight Plan

Name	Type	Lat/Lon	Altitude (ft)	VNAV Mode	Ground Speed (kts)	Turn Type	Leg Type
BOCCE	WP	N28° 05' 19.650", W081° 52' 55.730"	10000	VNAV	280	FLY_BY	TF
OTKEE	WP	N28° 09' 00.610", W081° 47' 58.510"	10000	VNAV	250	FLY_OVER	TF

Flyability

Flight Type:	RNAV_STAR
Selected Airport:	KMCO [IFPA]
Climb Gradient:	None assigned
Speeds:	200 Ground Speed to 11000 FT
	240 Ground Speed to 18000 FT
	260 Ground Speed to 24000 FT
	340 Ground Speed above 24000 FT
Descent During a Turn:	Allowed
VNAV Mode:	Flight Plan

DME DME Assessment Results for PRICY2 path BOCCE_OTKEE

DME/DME	
RNP:	RNP 2
Flight Mode:	Manual
Line of Sight (DTED Level 0 Max):	Evaluated
Inertial Drift:	Enabled
Initial Drift:	0.558 NM
INS Drift Rate:	8.0 NM/Hour
Range Mode:	OSV
RNP Edges:	Evaluated
Min DME Range:	3.0 NM
DME Types:	DME, VOR-DME, VORTAC
DME Include Angles:	30 to 150
Critical DMEs:	Not Allowed
DoD Facilities:	Not included
Foreign Facilities:	Included
High DMEs:	Included
Low DMEs:	Included
Terminal DMEs:	Included
Flight Check DMEs:	Not selected
Higher Altitudes:	Not Evaluated
Near Maximum Altitude:	Not Evaluated
Automatic ESVs:	Not enabled
Disabled DMEs:	None

DME/DME (Continued)										
DMEs Used										
#	Name	Lat/Lon	MAGVAR	Range	Type	Source	Critical	Status	Time	Distance
1	LAL	N27° 59' 10.253", W082° 00' 50.009"	1.0 E	130	H	IFPA	NO	Enabled	100 %	100 %
2	OCF	N29° 10' 38.918", W082° 13' 34.802"	0.0 E	40	L	IFPA	NO	Enabled	100 %	100 %
3	ORL	N28° 32' 33.802", W081° 20' 06.053"	0.0 E	130	H	IFPA	NO	Enabled	95.9 %	95.9 %

Flight Check DME Selection						
Distance [NM]	Selected DMEs					Alternate
0.0	OCF	LAL				
0.2	OCF	LAL	ORL			

Inertial Drift Segments			
#	Start Location	End Location	Length [NM]

Available DMEs by Waypoints		
Waypoint Before	Waypoint After	DME List
BOCCE	OTKEE	OCF, LAL, ORL

DME DME Assessment Results for PRICY2 path BOCCE_OTKEE

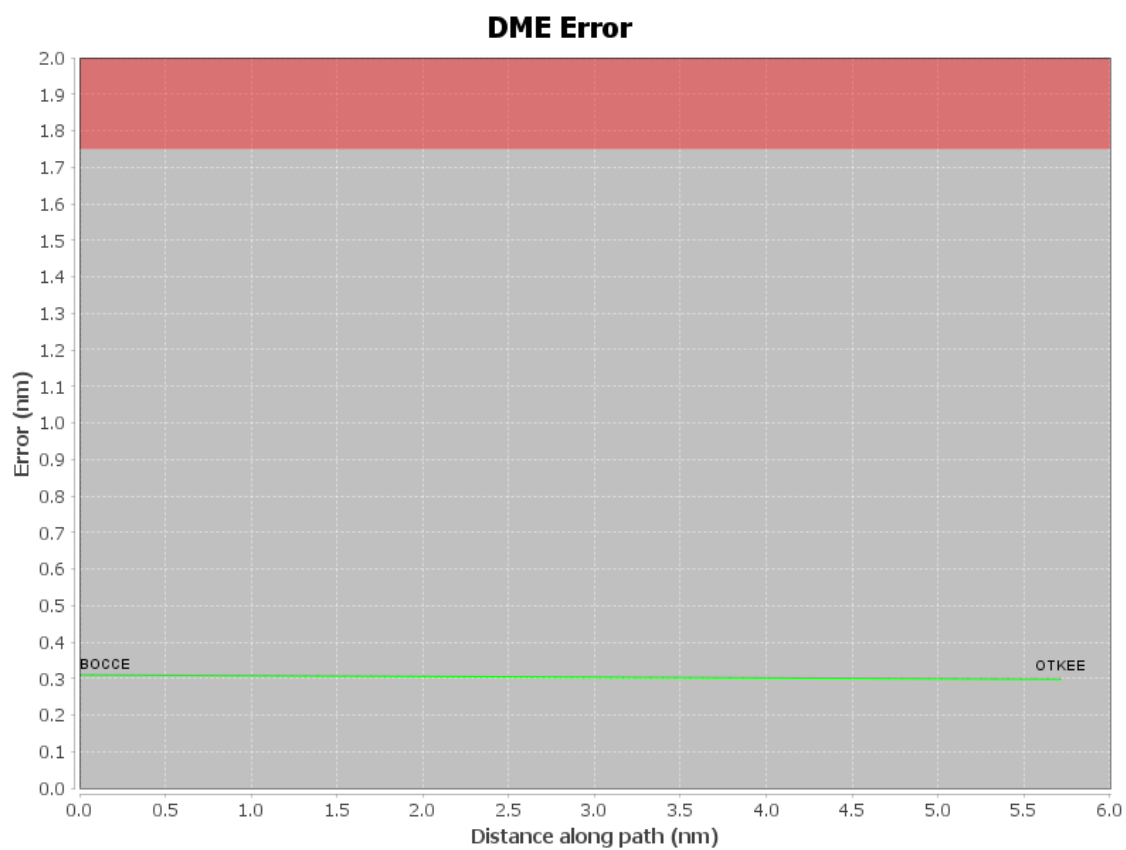
User Data Files

#	File Name
1	UserDMEsKMCO [IFPA] PRICY1 RNAV STAR_20200826_1453 EDT.udt

User DMEs

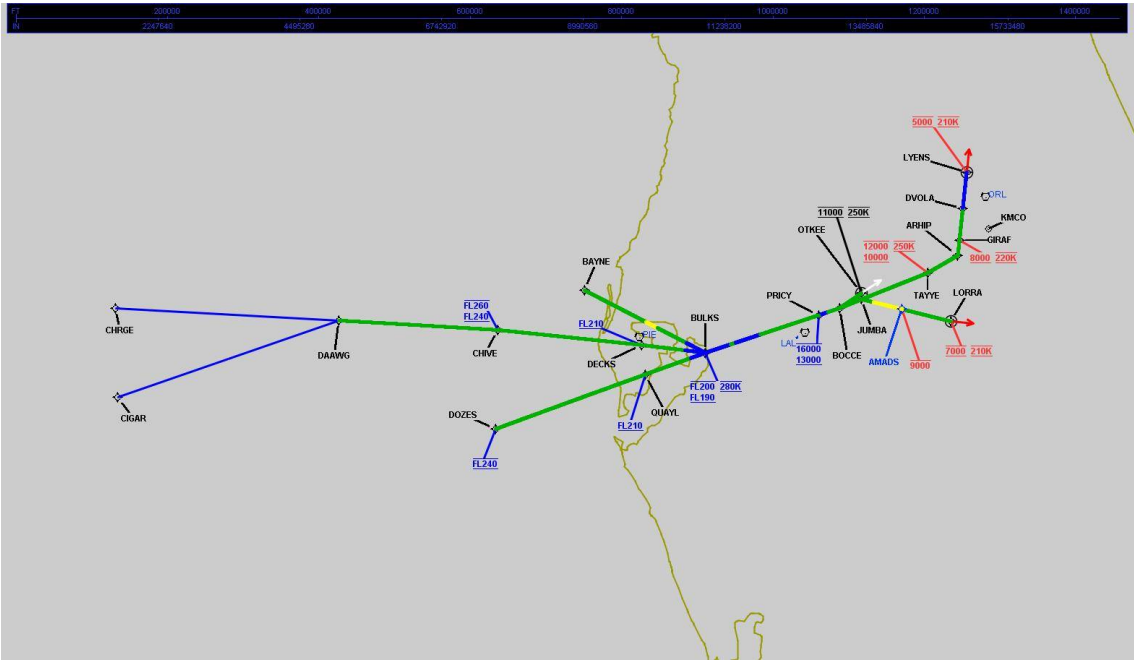
#	Name	Lat/Lon	MAGVAR	Range	Elevation [ft]	Frequency	Replaces	Status
1	OCF FAA 714002-25 OCF [IFPA]	N29° 10' 38.918", W082° 13' 34.802"	0.0 E	40	78.3	113.7	OCF FAA 714002-25	
ESV:		Bearing [True]: 190.0° to 235.0° Bearing [Mag]: 190.0° to 235.0°				Arc Distance: Out to 130.0 NM Altitude: 10000.0 to 20000.0 ft		
2	ORL FAA 694096-38 ORL [IFPA]	N28° 32' 33.802", W081° 20' 06.053"	0.0 E	130	101.6	112.2	ORL FAA 694096-38	
ESV:		Bearing [True]: 242.0° to 256.0° Bearing [Mag]: 242.0° to 256.0°				Arc Distance: Out to 165.0 NM Altitude: 18000.0 to 35000.0 ft		
3	MLB FAA 815809-14 MLB [IFPA]	N28° 06' 19.120", W080° 38' 06.460"	7.0 W	40	34	110.0	MLB FAA 815809-14	
ESV:		Bearing [True]: 270.0° to 331.0° Bearing [Mag]: 277.0° to 338.0°				Arc Distance: Out to 61.0 NM Altitude: 4000.0 to 17000.0 ft		
4	CTY FAA 704013-051 CTY [IFPA]	N29° 35' 56.403", W083° 02' 55.651"	2.0 W	40	33.8	112.0	CTY FAA 704013-051	
ESV:		Bearing [True]: 167.0° to 215.0° Bearing [Mag]: 169.0° to 217.0°				Arc Distance: Out to 130.0 NM Altitude: 15000.0 to 18000.0 ft		
5	OCF FAA 714002-18 OCF [IFPA]	N29° 10' 38.918", W082° 13' 34.802"	0.0 E	40	78.3	113.7	OCF FAA 714002-18	
ESV:		Bearing [True]: 117.0° to 180.0° Bearing [Mag]: 117.0° to 180.0°				Arc Distance: Out to 80.0 NM Altitude: 4000.0 to 20000.0 ft		

DME DME Assessment Results for PRICY2 path BOCCE_OTKEE



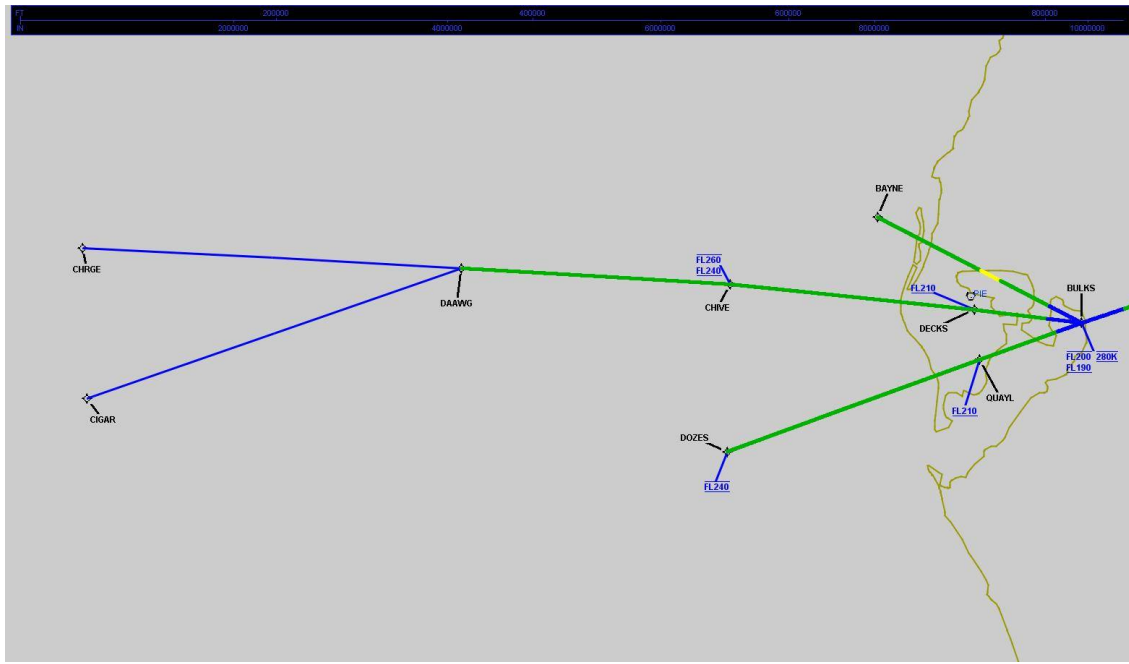
DME DME Assessment Results for PRICY2 path BOCCE_OTKEE

Graphic Depiction 1



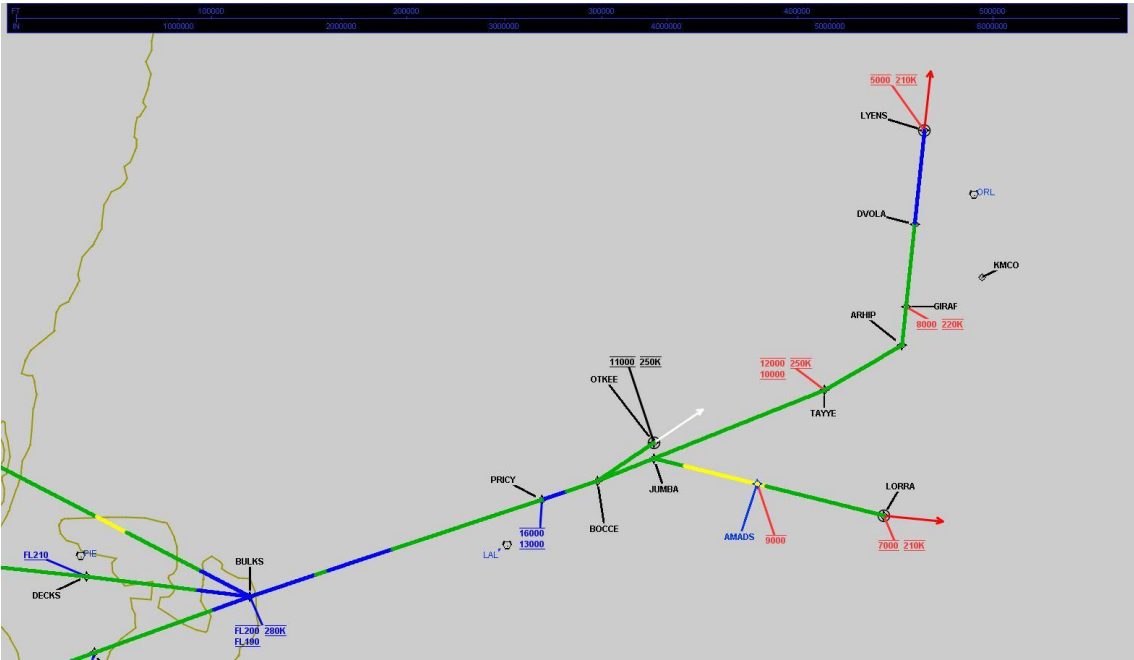
DME DME Assessment Results for PRICY2 path BOCCE_OTKEE

Graphic Depiction 2



DME DME Assessment Results for PRICY2 path BOCCE_OTKEE

Graphic Depiction 3



DME DME Assessment Results for PRICY2 path CHRGE_LYENS

Results Summary

Flyability:	Completed
DME/DME:	Completed - No Critical DMEs
Name:	Miles CTR Carpenter
Project File:	C:\Users\Miles CTR Carpenter\Desktop\FLMP May 2022 DME Evaluations\KMCO\KMCO PRICY2 STAR DME 20211115_1441 EST\KMCO PRICY2 STAR DME 211115.tgs
Output File:	C:\Users\Miles CTR Carpenter\Desktop\FLMP May 2022 DME Evaluations\KMCO\KMCO [IFPA] PRICY2 20211210_1720 EST\CHARGE_LYENS\KMCO PRICY2 RNAV STAR CHARGE LYENS 20211210_1720 EST.pdf
Procedure Name:	PRICY2
Software: DmeDmePlugin:	6.4.1
Date/Time:	12/10/2021 17:20 EST
Databases:	DTED MAX

Failures

No Failures

Warnings

GNSS_ONLY CHARGE_____DAAWG is GNSS Only and was not evaluated

Notes For Flight Check

None

Flight Plan

Name	Type	Lat/Lon	Altitude (ft)	VNAV Mode	Ground Speed (kts)	Turn Type	Leg Type
CHARGE	WP	N27° 48' 44.480", W084° 49' 55.930"	18000	VNAV	280	FLY_BY	TF
DAAWG	WP	N27° 51' 15.400", W083° 54' 55.520"	18000	VNAV	280	FLY_BY	TF
CHIVE	WP	N27° 52' 49.140", W083° 15' 53.440"	18000	VNAV	280	FLY_BY	TF
DECKS	WP	N27° 52' 50.130", W082° 40' 20.640"	18000	VNAV	280	FLY_BY	TF
BULKS	WP	N27° 52' 36.120", W082° 24' 38.960"	18000	VNAV	280	FLY_BY	TF
PRICY	WP	N28° 03' 16.760", W081° 57' 57.830"	12000	VNAV	280	FLY_BY	TF
BOCCE	WP	N28° 05' 19.650", W081° 52' 55.730"	10000	VNAV	280	FLY_BY	TF
JUMBA	WP	N28° 07' 42.380", W081° 47' 48.840"	6000	VNAV	280	FLY_BY	TF
TAYYE	WP	N28° 14' 55.620", W081° 32' 18.230"	6000	VNAV	250	FLY_BY	TF
ARHIP	WP	N28° 19' 21.100", W081° 25' 26.850"	6000	VNAV	250	FLY_BY	TF
GIRAF	WP	N28° 22' 36.620", W081° 25' 26.900"	6000	VNAV	220	FLY_BY	TF
DVOLA	WP	N28° 29' 33.860", W081° 25' 27.000"	4000	VNAV	220	FLY_BY	TF
LYENS	WP	N28° 37' 32.430", W081° 25' 26.850"	3000	VNAV	210	FLY_OVER	TF

DME DME Assessment Results for PRICY2 path CHRG_LYENS

Flyability	
Flight Type:	RNAV_STAR
Selected Airport:	KMCO [IFPA]
Climb Gradient:	None assigned
Speeds:	200 Ground Speed to 11000 FT
	240 Ground Speed to 18000 FT
	260 Ground Speed to 24000 FT
	340 Ground Speed above 24000 FT
Descent During a Turn:	Allowed
VNAV Mode:	Flight Plan

DME/DME	
RNP:	RNP 2
Flight Mode:	Manual
Line of Sight (DTED Level 0 Max):	Evaluated
Inertial Drift:	Enabled
Initial Drift:	0.558 NM
INS Drift Rate:	8.0 NM/Hour
Range Mode:	OSV
RNP Edges:	Evaluated
Min DME Range:	3.0 NM
DME Types:	DME, VOR-DME, VORTAC
DME Include Angles:	30 to 150
Critical DMEs:	Not Allowed
DoD Facilities:	Not included
Foreign Facilities:	Included
High DMEs:	Included
Low DMEs:	Included
Terminal DMEs:	Included
Flight Check DMEs:	Not selected
Higher Altitudes:	Not Evaluated
Near Maximum Altitude:	Not Evaluated
Automatic ESVs:	Not enabled
Disabled DMEs:	None

DME/DME (Continued)										
DMEs Used										
#	Name	Lat/Lon	MAGVAR	Range	Type	Source	Critical	Status	Time	Distance
1	LAL	N27° 59' 10.253", W082° 00' 50.009"	1.0 E	130	H	IFPA	NO	Enabled	53.2 %	54.2 %
2	TRV	N27° 40' 42.326", W080° 29' 23.012"	7.0 W	130	H	IFPA	NO	Enabled	0.5 %	0.5 %
3	PIE	N27° 54' 27.952", W082° 41' 03.513"	5.0 W	130	H	IFPA	NO	Enabled	39.6 %	40.6 %
4	CTY	N29° 35' 56.403", W083° 02' 55.651"	2.0 W	40	L	IFPA	NO	Enabled	32.6 %	33.4 %
5	OCF	N29° 10' 38.918", W082° 13' 34.802"	0.0 E	40	L	IFPA	NO	Enabled	63 %	63.1 %
6	MLB	N28° 06' 19.120", W080° 38' 06.460"	7.0 W	40	L	IFPA	NO	Enabled	15.3 %	14.1 %
7	ORL	N28° 32' 33.802", W081° 20' 06.053"	0.0 E	130	H	IFPA	NO	Enabled	55.3 %	55.2 %

DME DME Assessment Results for PRICY2 path CHRGE_LYENS

Flight Check DME Selection						
Distance [NM]	Selected DMEs					Alternate
0.0	CTY	PIE	OCF	ORL		
1.4	CTY	PIE	LAL	OCF	ORL	
63.0	CTY	LAL	OCF	ORL		
68.1	OCF	PIE	LAL	CTY	ORL	
68.9	OCF	PIE	LAL	ORL		
75.5						
85.8	TRV	ORL				
86.9						
92.6	OCF	PIE	LAL			
99.3	OCF	PIE				
106.0						
108.0	OCF	LAL				
111.9	OCF	LAL	ORL			
120.1	OCF	LAL	ORL	MLB		
139.0	MLB	ORL	OCF			
149.2						

Inertial Drift Segments				
#	Start Location	End Location	Length [NM]	
1	N27° 52' 40.855", W082° 29' 44.078"	N27° 54' 58.505", W082° 18' 44.672"	10.2386	
2	N27° 55' 25.415", W082° 17' 37.615"	N27° 57' 47.498", W082° 11' 43.020"	5.7422	
3	N28° 03' 16.760", W081° 57' 57.830"	N28° 04' 08.627", W081° 55' 50.405"	2.0672	
4	N28° 29' 37.513", W081° 25' 26.999"	N28° 37' 32.430", W081° 25' 26.850"	7.8945	

Available DMEs by Waypoints		
Waypoint Before	Waypoint After	DME List
CHRGE	DAAWG	
DAAWG	CHIVE	OCF, LAL, ORL, CTY, PIE
CHIVE	DECKS	OCF, LAL, ORL, CTY, PIE
DECKS	BULKS	OCF, LAL, ORL, CTY, PIE
BULKS	PRICY	OCF, LAL, ORL, TRV, PIE
PRICY	BOCCE	OCF, LAL
BOCCE	JUMBA	OCF, LAL, ORL
JUMBA	TAYYE	MLB, OCF, LAL, ORL
TAYYE	ARHIP	MLB, OCF, LAL, ORL
ARHIP	GIRAF	MLB, OCF, ORL
GIRAF	DVOLA	MLB, OCF, ORL
DVOLA	LYENS	MLB, OCF, ORL

DME DME Assessment Results for PRICY2 path CHRG_LYENS

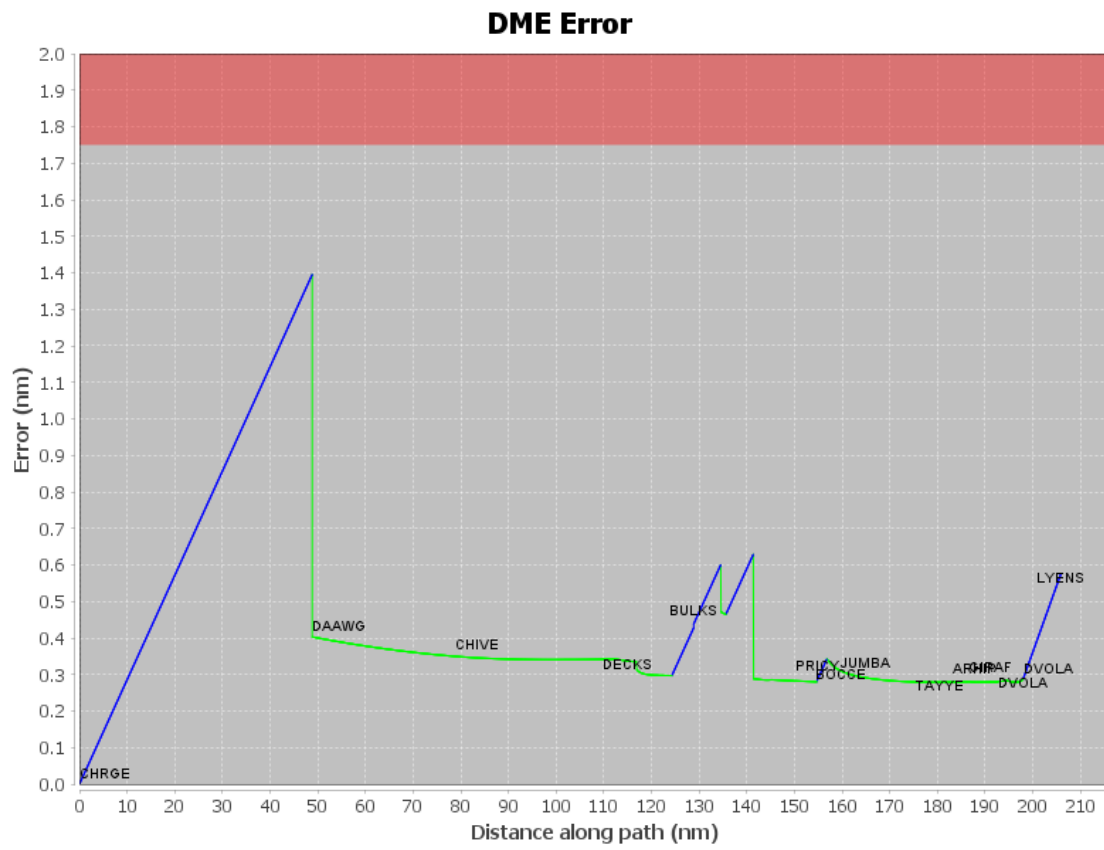
User Data Files

#	File Name
1	UserDMEsKMCO [IFPA] PRICY1 RNAV STAR_20200826_1453 EDT.udt

User DMEs

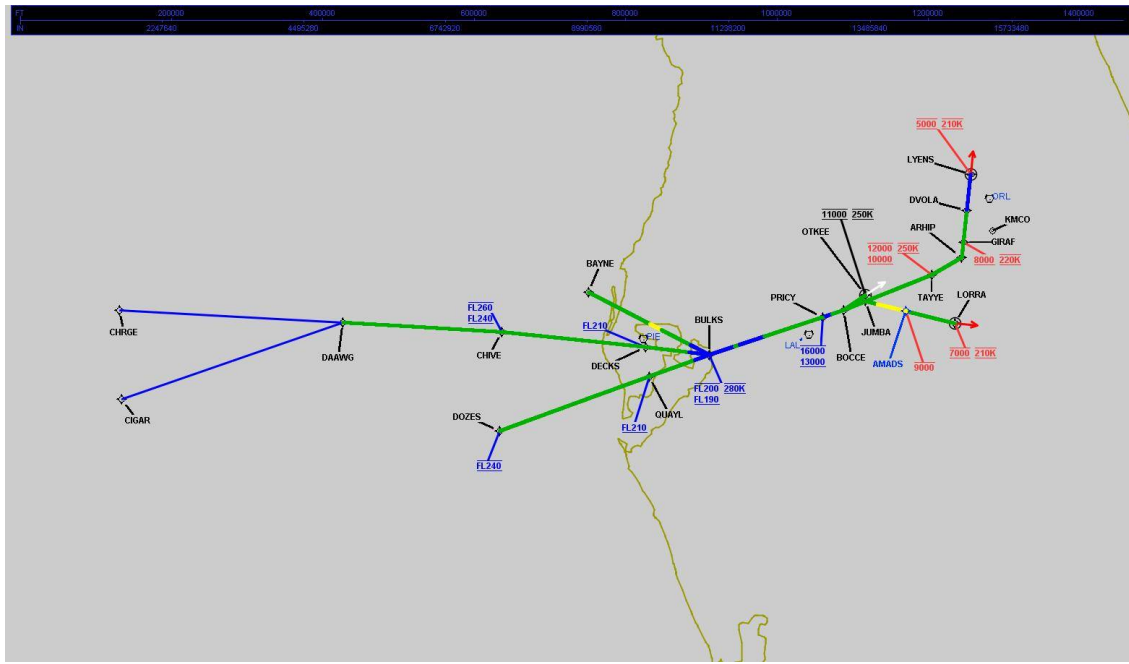
#	Name	Lat/Lon	MAGVAR	Range	Elevation [ft]	Frequency	Replaces	Status
1	OCF FAA 714002-25 OCF [IFPA]	N29° 10' 38.918", W082° 13' 34.802"	0.0 E	40	78.3	113.7	OCF FAA 714002-25	
ESV:		Bearing [True]: 190.0° to 235.0° Bearing [Mag]: 190.0° to 235.0°				Arc Distance: Out to 130.0 NM Altitude: 10000.0 to 20000.0 ft		
2	ORL FAA 694096-38 ORL [IFPA]	N28° 32' 33.802", W081° 20' 06.053"	0.0 E	130	101.6	112.2	ORL FAA 694096-38	
ESV:		Bearing [True]: 242.0° to 256.0° Bearing [Mag]: 242.0° to 256.0°				Arc Distance: Out to 165.0 NM Altitude: 18000.0 to 35000.0 ft		
3	MLB FAA 815809-14 MLB [IFPA]	N28° 06' 19.120", W080° 38' 06.460"	7.0 W	40	34	110.0	MLB FAA 815809-14	
ESV:		Bearing [True]: 270.0° to 331.0° Bearing [Mag]: 277.0° to 338.0°				Arc Distance: Out to 61.0 NM Altitude: 4000.0 to 17000.0 ft		
4	CTY FAA 704013-051 CTY [IFPA]	N29° 35' 56.403", W083° 02' 55.651"	2.0 W	40	33.8	112.0	CTY FAA 704013-051	
ESV:		Bearing [True]: 167.0° to 215.0° Bearing [Mag]: 169.0° to 217.0°				Arc Distance: Out to 130.0 NM Altitude: 15000.0 to 18000.0 ft		
5	OCF FAA 714002-18 OCF [IFPA]	N29° 10' 38.918", W082° 13' 34.802"	0.0 E	40	78.3	113.7	OCF FAA 714002-18	
ESV:		Bearing [True]: 117.0° to 180.0° Bearing [Mag]: 117.0° to 180.0°				Arc Distance: Out to 80.0 NM Altitude: 4000.0 to 20000.0 ft		

DME DME Assessment Results for PRICY2 path CHRGY_LYENS



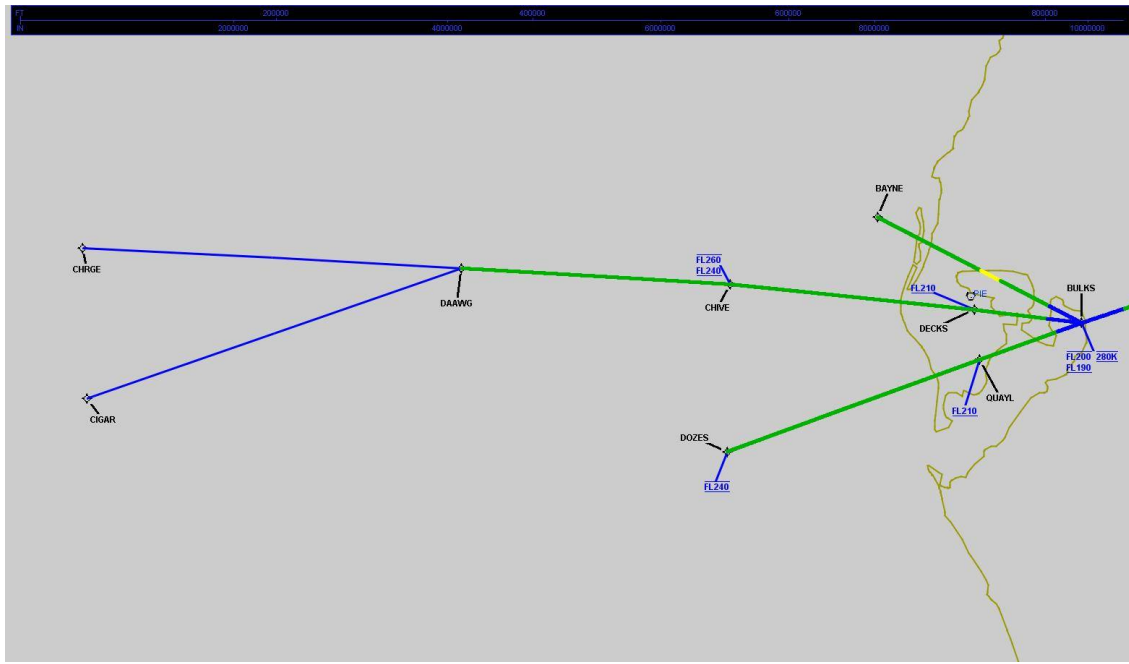
DME DME Assessment Results for PRICY2 path CHRG_LYENS

Graphic Depiction 1



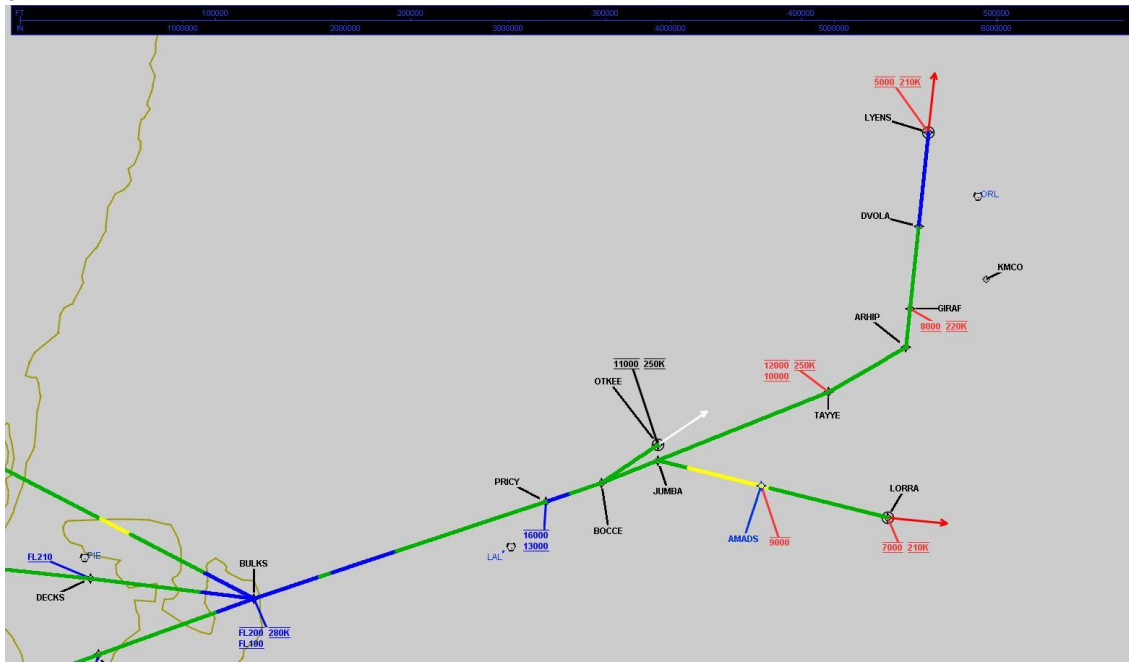
DME DME Assessment Results for PRICY2 path CHRG_LYENS

Graphic Depiction 2



DME DME Assessment Results for PRICY2 path CHRG LYENS

Graphic Depiction 3



DME DME Assessment Results for PRICY2 path CIGAR_DAAWG

Results Summary

Flyability:	Completed
DME/DME:	Completed - No Critical DMEs
Name:	Miles CTR Carpenter
Project File:	C:\Users\Miles CTR Carpenter\Desktop\FLMP May 2022 DME Evaluations\KMCO\KMCO PRICY2 STAR DME 20211115_1441 EST\KMCO PRICY2 STAR DME 211115.tgs
Output File:	C:\Users\Miles CTR Carpenter\Desktop\FLMP May 2022 DME Evaluations\KMCO\KMCO [IFPA] PRICY2 20211210_1720 EST\CIGAR_DAAWG\KMCO PRICY2 RNAV STAR CIGAR DAAWG 20211210_1720 EST.pdf
Procedure Name:	PRICY2
Software: DmeDmePlugin:	6.4.1
Date/Time:	12/10/2021 17:20 EST
Databases:	DTED MAX

Failures

No Failures

Warnings

GNSS_ONLY CIGAR_____ DAAWG is GNSS Only and was not evaluated

Notes For Flight Check

None

Flight Plan

Name	Type	Lat/Lon	Altitude (ft)	VNAV Mode	Ground Speed (kts)	Turn Type	Leg Type
CIGAR	WP	N27° 29' 36.610", W084° 46' 59.510"	18000	VNAV	280	FLY_BY	TF
DAAWG	WP	N27° 51' 15.400", W083° 54' 55.520"	18000	VNAV	280	FLY_BY	TF

Flyability

Flight Type:	RNAV_STAR
Selected Airport:	KMCO [IFPA]
Climb Gradient:	None assigned
Speeds:	200 Ground Speed to 11000 FT
	240 Ground Speed to 18000 FT
	260 Ground Speed to 24000 FT
	340 Ground Speed above 24000 FT
Descent During a Turn:	Allowed
VNAV Mode:	Flight Plan

DME DME Assessment Results for PRICY2 path CIGAR_DAAWG

DME/DME	
RNP:	RNP 2
Flight Mode:	Manual
Line of Sight (DTED Level 0 Max):	Evaluated
Inertial Drift:	Enabled
Initial Drift:	0.558 NM
INS Drift Rate:	8.0 NM/Hour
Range Mode:	OSV
RNP Edges:	Evaluated
Min DME Range:	3.0 NM
DME Types:	DME, VOR-DME, VORTAC
DME Include Angles:	30 to 150
Critical DMEs:	Not Allowed
DoD Facilities:	Not included
Foreign Facilities:	Included
High DMEs:	Included
Low DMEs:	Included
Terminal DMEs:	Included
Flight Check DMEs:	Not selected
Higher Altitudes:	Not Evaluated
Near Maximum Altitude:	Not Evaluated
Automatic ESVs:	Not enabled
Disabled DMEs:	None

DME/DME (Continued)										
DMEs Used										
#	Name	Lat/Lon	MAGVAR	Range	Type	Source	Critical	Status	Time	Distance

Inertial Drift Segments			
#	Start Location	End Location	Length [NM]

Available DMEs by Waypoints		
Waypoint Before	Waypoint After	DME List
CIGAR	DAAWG	

DME DME Assessment Results for PRICY2 path CIGAR_DAAWG

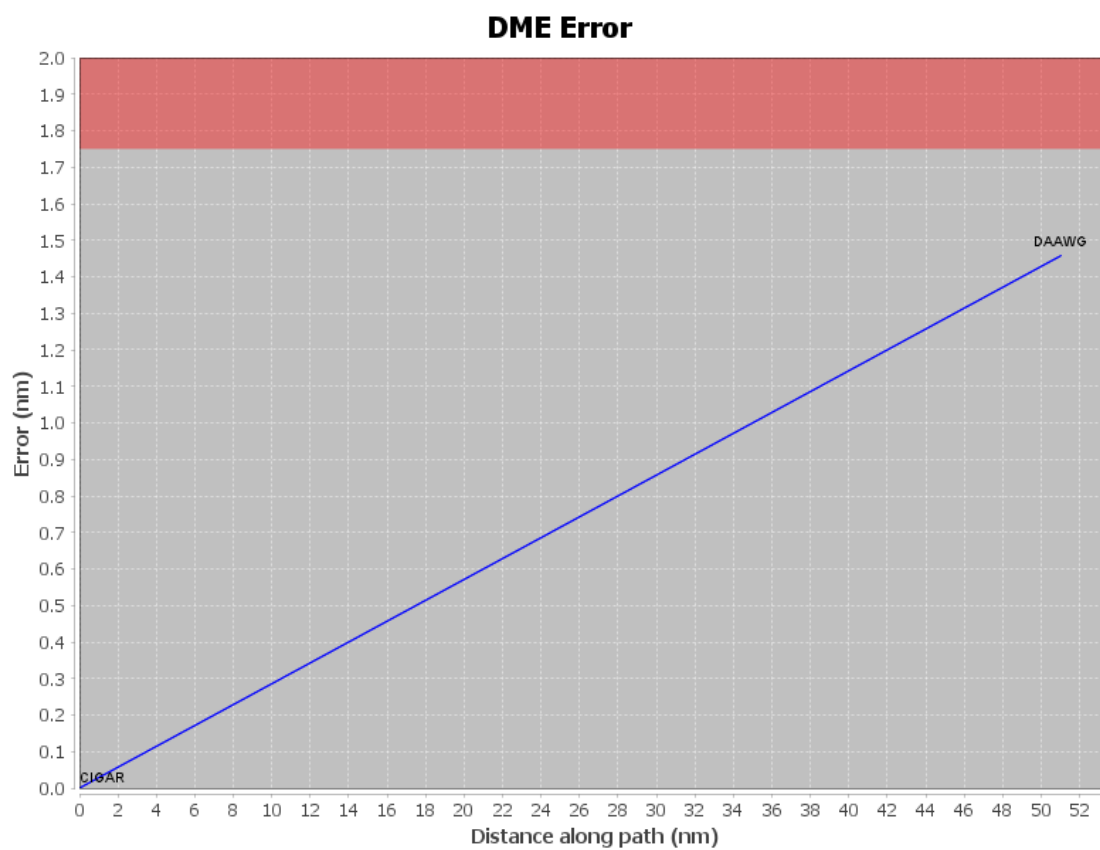
User Data Files

#	File Name
1	UserDMEsKMCO [IFPA] PRICY1 RNAV STAR_20200826_1453 EDT.udt

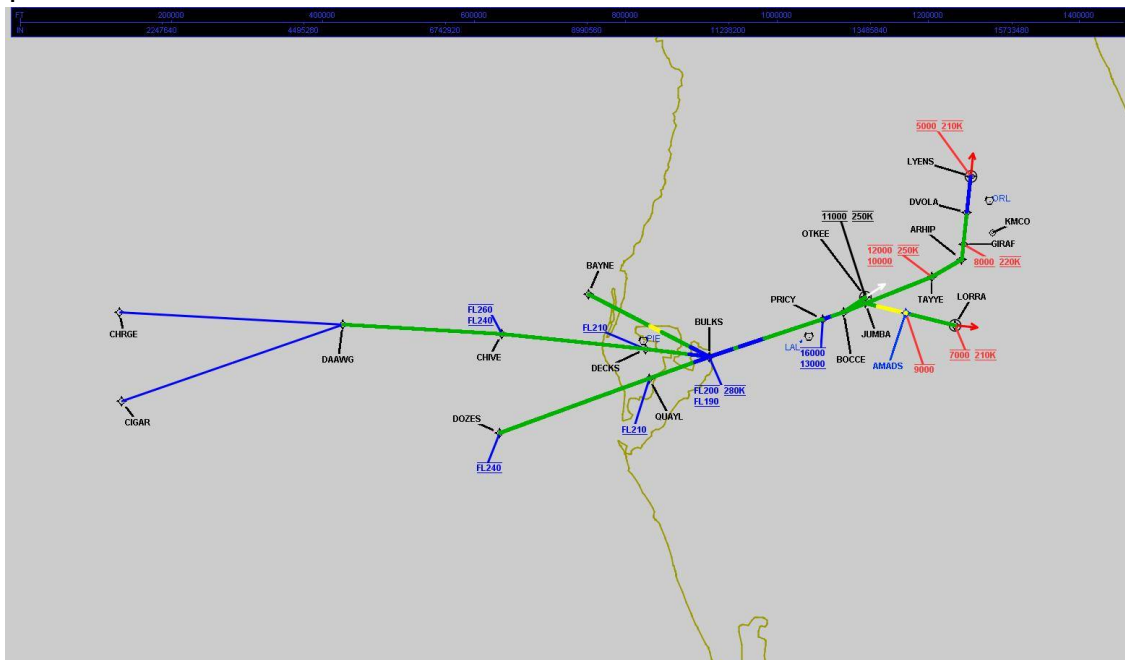
User DMEs

#	Name	Lat/Lon	MAGVAR	Range	Elevation [ft]	Frequency	Replaces	Status
1	OCF FAA 714002-25 OCF [IFPA]	N29° 10' 38.918", W082° 13' 34.802"	0.0 E	40	78.3	113.7	OCF FAA 714002-25	
ESV:		Bearing [True]: 190.0° to 235.0° Bearing [Mag]: 190.0° to 235.0°				Arc Distance: Out to 130.0 NM Altitude: 10000.0 to 20000.0 ft		
2	ORL FAA 694096-38 ORL [IFPA]	N28° 32' 33.802", W081° 20' 06.053"	0.0 E	130	101.6	112.2	ORL FAA 694096-38	
ESV:		Bearing [True]: 242.0° to 256.0° Bearing [Mag]: 242.0° to 256.0°				Arc Distance: Out to 165.0 NM Altitude: 18000.0 to 35000.0 ft		
3	MLB FAA 815809-14 MLB [IFPA]	N28° 06' 19.120", W080° 38' 06.460"	7.0 W	40	34	110.0	MLB FAA 815809-14	
ESV:		Bearing [True]: 270.0° to 331.0° Bearing [Mag]: 277.0° to 338.0°				Arc Distance: Out to 61.0 NM Altitude: 4000.0 to 17000.0 ft		
4	CTY FAA 704013-051 CTY [IFPA]	N29° 35' 56.403", W083° 02' 55.651"	2.0 W	40	33.8	112.0	CTY FAA 704013-051	
ESV:		Bearing [True]: 167.0° to 215.0° Bearing [Mag]: 169.0° to 217.0°				Arc Distance: Out to 130.0 NM Altitude: 15000.0 to 18000.0 ft		
5	OCF FAA 714002-18 OCF [IFPA]	N29° 10' 38.918", W082° 13' 34.802"	0.0 E	40	78.3	113.7	OCF FAA 714002-18	
ESV:		Bearing [True]: 117.0° to 180.0° Bearing [Mag]: 117.0° to 180.0°				Arc Distance: Out to 80.0 NM Altitude: 4000.0 to 20000.0 ft		

DME DME Assessment Results for PRICY2 path CIGAR_DAAWG

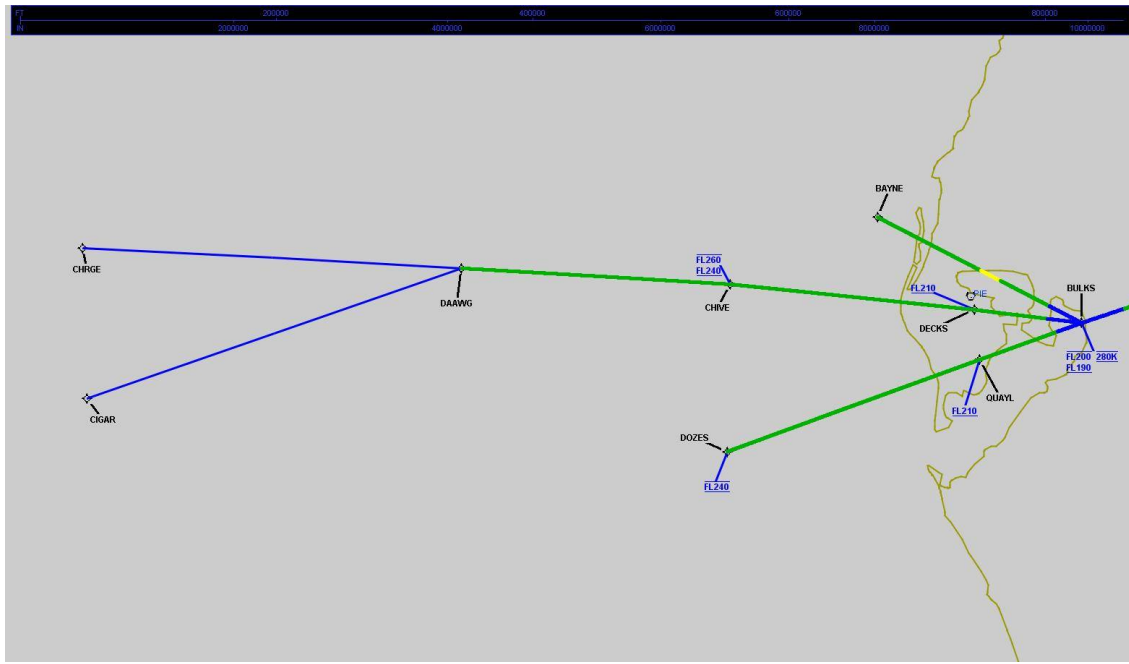


Graphic Depiction 1



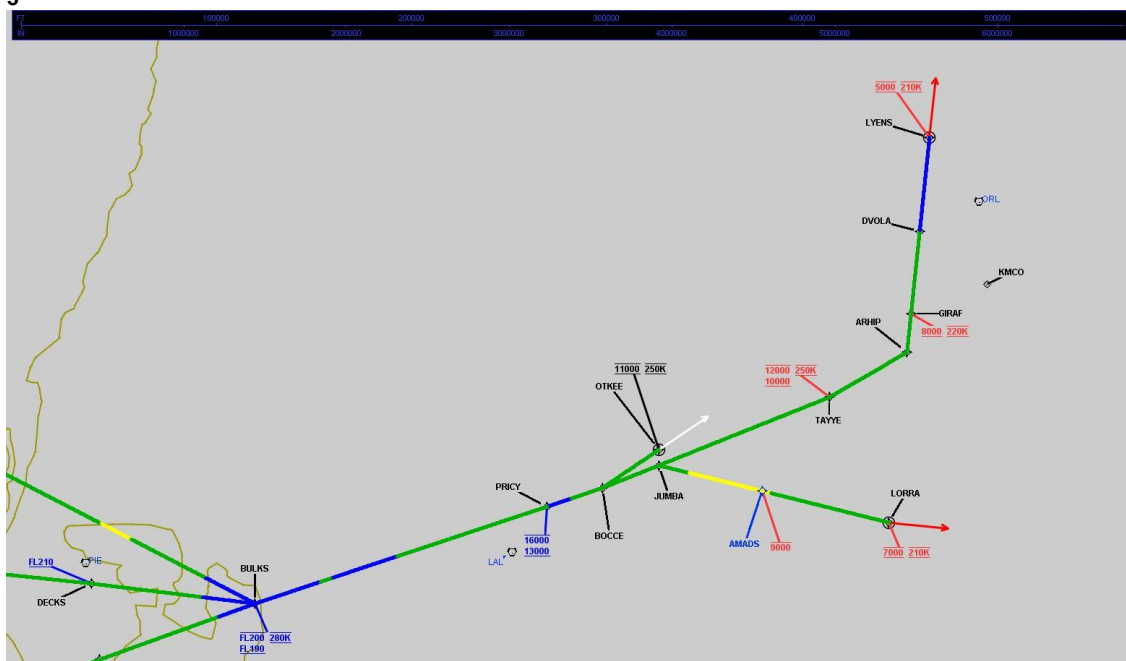
DME DME Assessment Results for PRICY2 path CIGAR_DAAWG

Graphic Depiction 2



DME DME Assessment Results for PRICY2 path CIGAR_DAAWG

Graphic Depiction 3



DME DME Assessment Results for PRICY2 path DOZES_BULKS

Results Summary

Flyability:	Completed
DME/DME:	Completed - No Critical DMEs
Name:	Miles CTR Carpenter
Project File:	C:\Users\Miles CTR Carpenter\Desktop\FLMP May 2022 DME Evaluations\KMCO\KMCO PRICY2 STAR DME 20211115_1441 EST\KMCO PRICY2 STAR DME 211115.tgs
Output File:	C:\Users\Miles CTR Carpenter\Desktop\FLMP May 2022 DME Evaluations\KMCO\KMCO [IFPA] PRICY2 20211210_1720 EST\DOZES_BULKS\KMCO PRICY2 RNAV STAR DOZES BULKS 20211210_1720 EST.pdf
Procedure Name:	PRICY2
Software: DmeDmePlugin:	6.4.1
Date/Time:	12/10/2021 17:20 EST
Databases:	DTED MAX

Failures

No Failures

Warnings

No Warnings

Notes For Flight Check

None

Flight Plan

Name	Type	Lat/Lon	Altitude (ft)	VNAV Mode	Ground Speed (kts)	Turn Type	Leg Type
DOZES	WP	N27° 31' 25.830", W083° 13' 50.460"	18000	VNAV	280	FLY_BY	TF
QUAYL	WP	N27° 46' 33.590", W082° 38' 47.400"	18000	VNAV	280	FLY_BY	TF
BULKS	WP	N27° 52' 36.120", W082° 24' 38.960"	18000	VNAV	280	FLY_BY	TF

Flyability

Flight Type:	RNAV_STAR
Selected Airport:	KMCO [IFPA]
Climb Gradient:	None assigned
Speeds:	200 Ground Speed to 11000 FT
	240 Ground Speed to 18000 FT
	260 Ground Speed to 24000 FT
	340 Ground Speed above 24000 FT
Descent During a Turn:	Allowed
VNAV Mode:	Flight Plan

DME DME Assessment Results for PRICY2 path DOZES_BULKS

DME/DME	
RNP:	RNP 2
Flight Mode:	Manual
Line of Sight (DTED Level 0 Max):	Evaluated
Inertial Drift:	Enabled
Initial Drift:	0.558 NM
INS Drift Rate:	8.0 NM/Hour
Range Mode:	OSV
RNP Edges:	Evaluated
Min DME Range:	3.0 NM
DME Types:	DME, VOR-DME, VORTAC
DME Include Angles:	30 to 150
Critical DMEs:	Not Allowed
DoD Facilities:	Not included
Foreign Facilities:	Included
High DMEs:	Included
Low DMEs:	Included
Terminal DMEs:	Included
Flight Check DMEs:	Not selected
Higher Altitudes:	Not Evaluated
Near Maximum Altitude:	Not Evaluated
Automatic ESVs:	Not enabled
Disabled DMEs:	None

DME/DME (Continued)										
DMEs Used										
#	Name	Lat/Lon	MAGVAR	Range	Type	Source	Critical	Status	Time	Distance
1	LAL	N27° 59' 10.253", W082° 00' 50.009"	1.0 E	130	H	IFPA	NO	Enabled	84.3 %	84.3 %
2	PIE	N27° 54' 27.952", W082° 41' 03.513"	5.0 W	130	H	IFPA	NO	Enabled	84.8 %	84.8 %
3	CTY	N29° 35' 56.403", W083° 02' 55.651"	2.0 W	40	L	IFPA	NO	Enabled	77.1 %	77.1 %
4	OCF	N29° 10' 38.918", W082° 13' 34.802"	0.0 E	40	L	IFPA	NO	Enabled	84.3 %	84.3 %
5	ORL	N28° 32' 33.802", W081° 20' 06.053"	0.0 E	130	H	IFPA	NO	Enabled	55.3 %	55.3 %

Flight Check DME Selection						
Distance [NM]	Selected DMEs					Alternate
0.0	CTY	LAL	PIE	OCF		
18.3	CTY	LAL	OCF	ORL	PIE	
21.8	CTY	LAL	OCF	ORL		
25.7	CTY	LAL	PIE	OCF	ORL	
37.5	PIE	LAL	ORL	OCF		
41.0	PIE	ORL				
45.2						

Inertial Drift Segments			
#	Start Location	End Location	Length [NM]
1	N27° 51' 09.165", W082° 28' 02.918"	N27° 52' 36.120", W082° 24' 38.960"	3.3415

Available DMEs by Waypoints		
Waypoint Before	Waypoint After	DME List
DOZES	QUAYL	OCF, LAL, ORL, CTY, PIE
QUAYL	BULKS	OCF, LAL, ORL, CTY, PIE

DME DME Assessment Results for PRICY2 path DOZES_BULKS

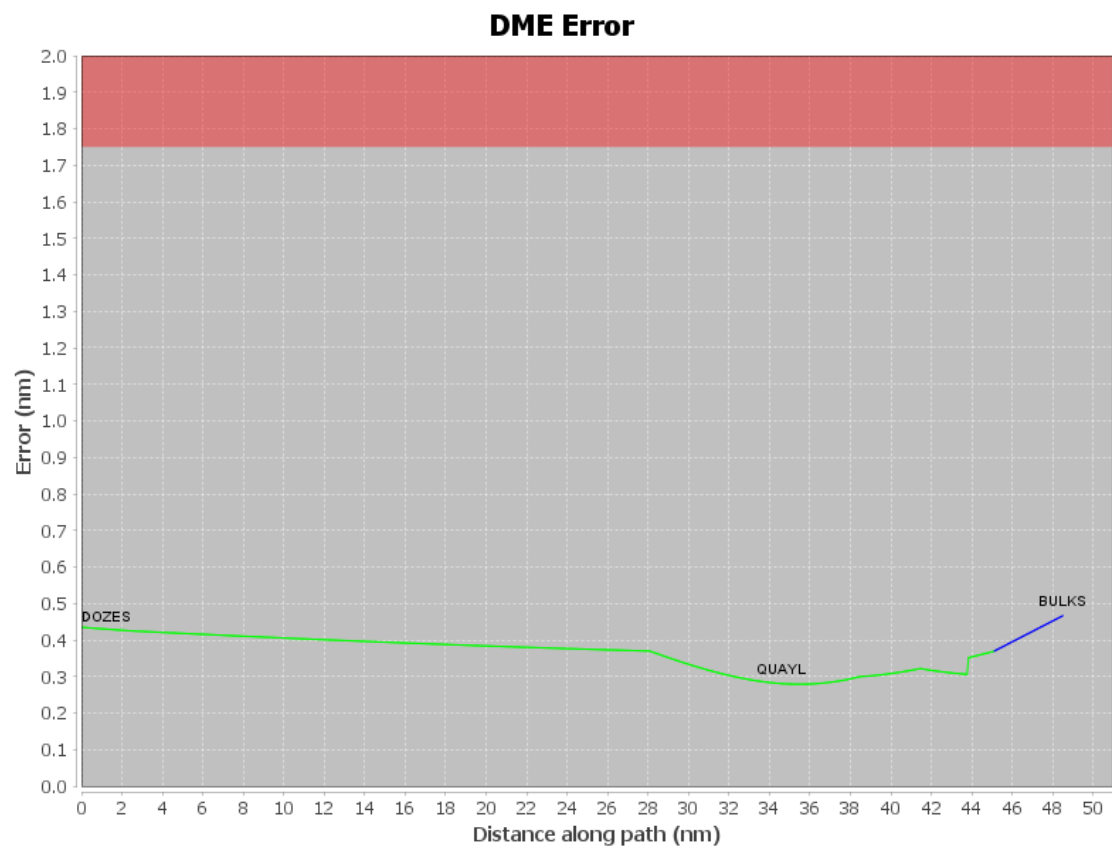
User Data Files

#	File Name
1	UserDMEsKMCO [IFPA] PRICY1 RNAV STAR_20200826_1453 EDT.udt

User DMEs

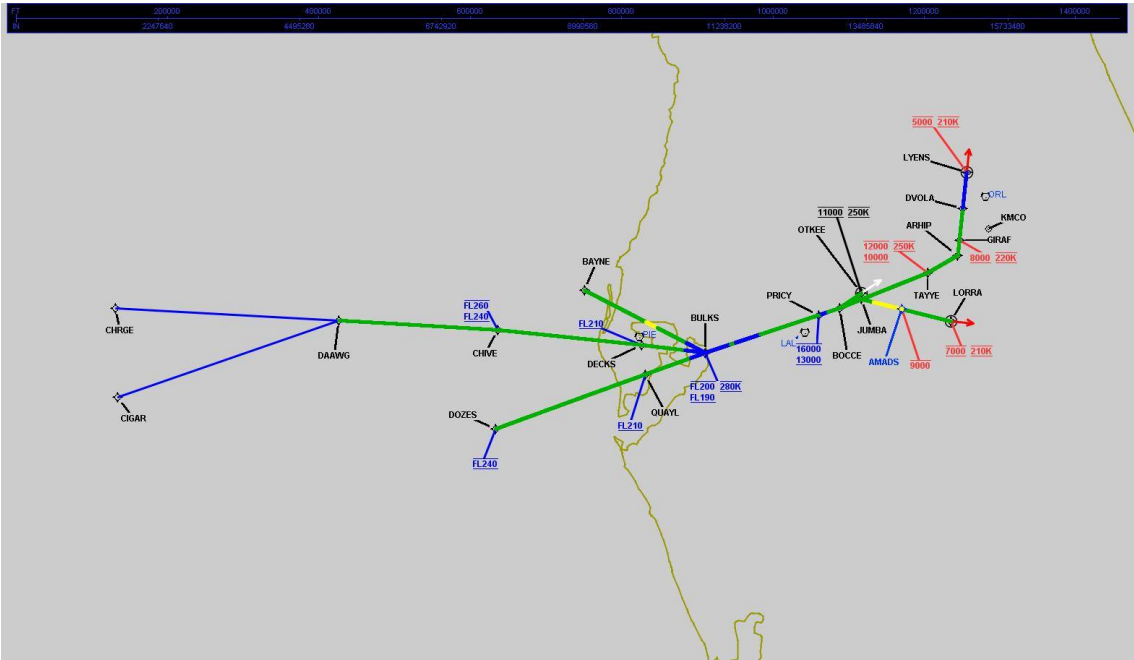
#	Name	Lat/Lon	MAGVAR	Range	Elevation [ft]	Frequency	Replaces	Status
1	OCF FAA 714002-25 OCF [IFPA]	N29° 10' 38.918", W082° 13' 34.802"	0.0 E	40	78.3	113.7	OCF FAA 714002-25	
ESV:		Bearing [True]: 190.0° to 235.0° Bearing [Mag]: 190.0° to 235.0°				Arc Distance: Out to 130.0 NM Altitude: 10000.0 to 20000.0 ft		
2	ORL FAA 694096-38 ORL [IFPA]	N28° 32' 33.802", W081° 20' 06.053"	0.0 E	130	101.6	112.2	ORL FAA 694096-38	
ESV:		Bearing [True]: 242.0° to 256.0° Bearing [Mag]: 242.0° to 256.0°				Arc Distance: Out to 165.0 NM Altitude: 18000.0 to 35000.0 ft		
3	MLB FAA 815809-14 MLB [IFPA]	N28° 06' 19.120", W080° 38' 06.460"	7.0 W	40	34	110.0	MLB FAA 815809-14	
ESV:		Bearing [True]: 270.0° to 331.0° Bearing [Mag]: 277.0° to 338.0°				Arc Distance: Out to 61.0 NM Altitude: 4000.0 to 17000.0 ft		
4	CTY FAA 704013-051 CTY [IFPA]	N29° 35' 56.403", W083° 02' 55.651"	2.0 W	40	33.8	112.0	CTY FAA 704013-051	
ESV:		Bearing [True]: 167.0° to 215.0° Bearing [Mag]: 169.0° to 217.0°				Arc Distance: Out to 130.0 NM Altitude: 15000.0 to 18000.0 ft		
5	OCF FAA 714002-18 OCF [IFPA]	N29° 10' 38.918", W082° 13' 34.802"	0.0 E	40	78.3	113.7	OCF FAA 714002-18	
ESV:		Bearing [True]: 117.0° to 180.0° Bearing [Mag]: 117.0° to 180.0°				Arc Distance: Out to 80.0 NM Altitude: 4000.0 to 20000.0 ft		

DME DME Assessment Results for PRICY2 path DOZES_BULKS



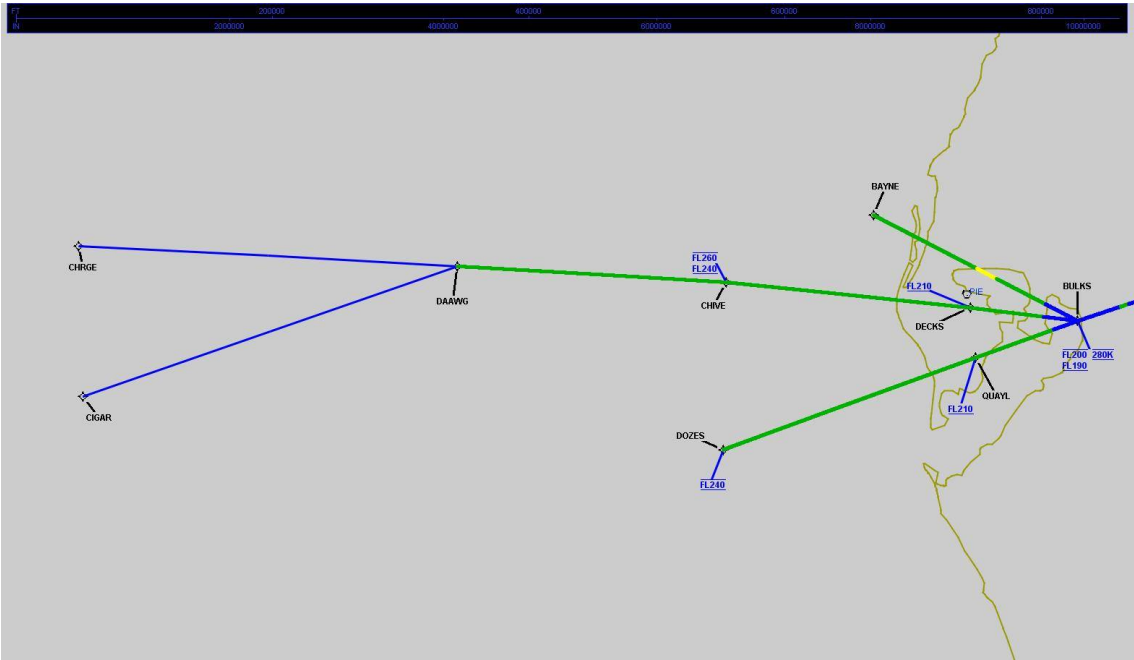
DME DME Assessment Results for PRICY2 path DOZES_BULKS

Graphic Depiction 1



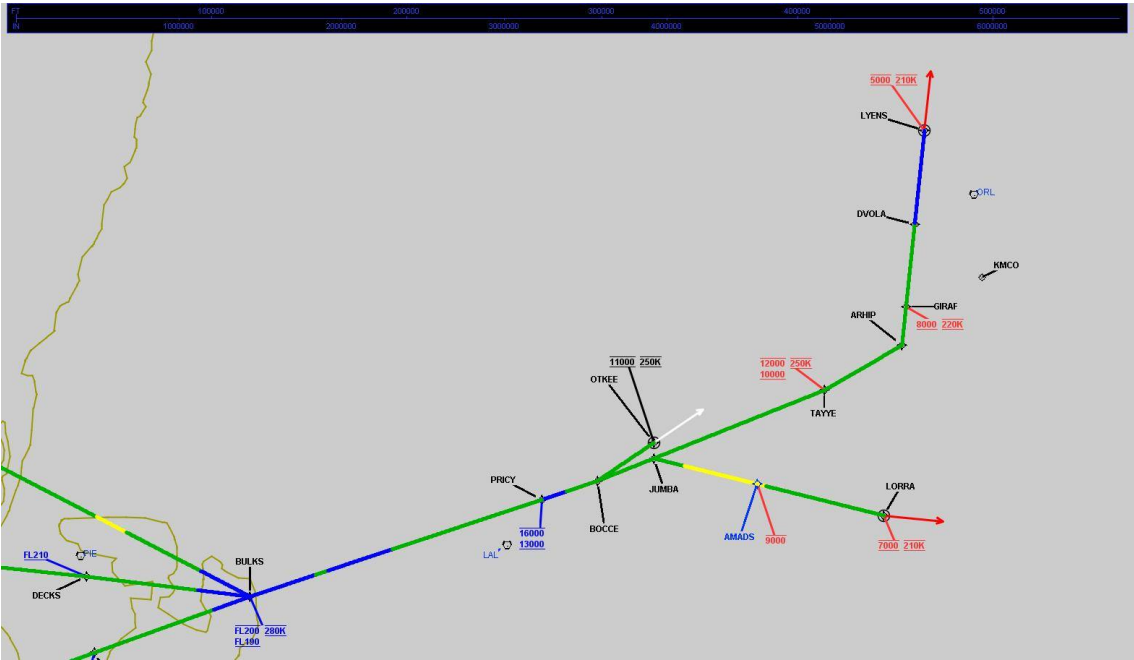
DME DME Assessment Results for PRICY2 path DOZES_BULKS

Graphic Depiction 2



DME DME Assessment Results for PRICY2 path DOZES_BULKS

Graphic Depiction 3



DME DME Assessment Results for PRICY2 path JUMBA_LORRA

Results Summary

Flyability:	Completed
DME/DME:	Completed - No Critical DMEs
Name:	Miles CTR Carpenter
Project File:	C:\Users\Miles CTR Carpenter\Desktop\FLMP May 2022 DME Evaluations\KMCO\KMCO PRICY2 STAR DME 20211115_1441 EST\KMCO PRICY2 STAR DME 211115.tgs
Output File:	C:\Users\Miles CTR Carpenter\Desktop\FLMP May 2022 DME Evaluations\KMCO\KMCO [IFPA] PRICY2 20211210_1720 EST\JUMBA_LORRA\KMCO PRICY2 RNAV STAR JUMBA LORRA 20211210_1720 EST.pdf
Procedure Name:	PRICY2
Software: DmeDmePlugin:	6.4.1
Date/Time:	12/10/2021 17:20 EST
Databases:	DTED MAX

Failures

No Failures

Warnings

No Warnings

Notes For Flight Check

None

Flight Plan

Name	Type	Lat/Lon	Altitude (ft)	VNAV Mode	Ground Speed (kts)	Turn Type	Leg Type
JUMBA	WP	N28° 07' 42.380", W081° 47' 48.840"	6000	VNAV	280	FLY_BY	TF
AMADS	WP	N28° 06' 28.712", W081° 37' 47.004"	6000	VNAV	280	FLY_BY	TF
LORRA	WP	N28° 04' 57.200", W081° 25' 27.910"	6000	VNAV	210	FLY_OVER	TF

Flyability

Flight Type:	RNAV_STAR
Selected Airport:	KMCO [IFPA]
Climb Gradient:	None assigned
Speeds:	200 Ground Speed to 11000 FT
	240 Ground Speed to 18000 FT
	260 Ground Speed to 24000 FT
	340 Ground Speed above 24000 FT
Descent During a Turn:	Allowed
VNAV Mode:	Flight Plan

DME DME Assessment Results for PRICY2 path JUMBA_LORRA

DME/DME	
RNP:	RNP 2
Flight Mode:	Manual
Line of Sight (DTED Level 0 Max):	Evaluated
Inertial Drift:	Enabled
Initial Drift:	0.558 NM
INS Drift Rate:	8.0 NM/Hour
Range Mode:	OSV
RNP Edges:	Evaluated
Min DME Range:	3.0 NM
DME Types:	DME, VOR-DME, VORTAC
DME Include Angles:	30 to 150
Critical DMEs:	Not Allowed
DoD Facilities:	Not included
Foreign Facilities:	Included
High DMEs:	Included
Low DMEs:	Included
Terminal DMEs:	Included
Flight Check DMEs:	Not selected
Higher Altitudes:	Not Evaluated
Near Maximum Altitude:	Not Evaluated
Automatic ESVs:	Not enabled
Disabled DMEs:	None

DME/DME (Continued)										
DMEs Used										
#	Name	Lat/Lon	MAGVAR	Range	Type	Source	Critical	Status	Time	Distance
1	LAL	N27° 59' 10.253", W082° 00' 50.009"	1.0 E	130	H	IFPA	NO	Enabled	100 %	100 %
2	OCF	N29° 10' 38.918", W082° 13' 34.802"	0.0 E	40	L	IFPA	NO	Enabled	90.3 %	90.3 %
3	MLB	N28° 06' 19.120", W080° 38' 06.460"	7.0 W	40	L	IFPA	NO	Enabled	35.2 %	35.2 %
4	ORL	N28° 32' 33.802", W081° 20' 06.053"	0.0 E	130	H	IFPA	NO	Enabled	100 %	100 %

Flight Check DME Selection						
Distance [NM]	Selected DMEs					Alternate
0.0	OCF	LAL	ORL			
2.6	OCF	LAL	MLB	ORL		
9.7	OCF	LAL	ORL			
18.1	LAL	ORL				

Inertial Drift Segments			
#	Start Location	End Location	Length [NM]

Available DMEs by Waypoints		
Waypoint Before	Waypoint After	DME List
JUMBA	AMADS	MLB, OCF, LAL, ORL
AMADS	LORRA	MLB, OCF, LAL, ORL

DME DME Assessment Results for PRICY2 path JUMBA_LORRA

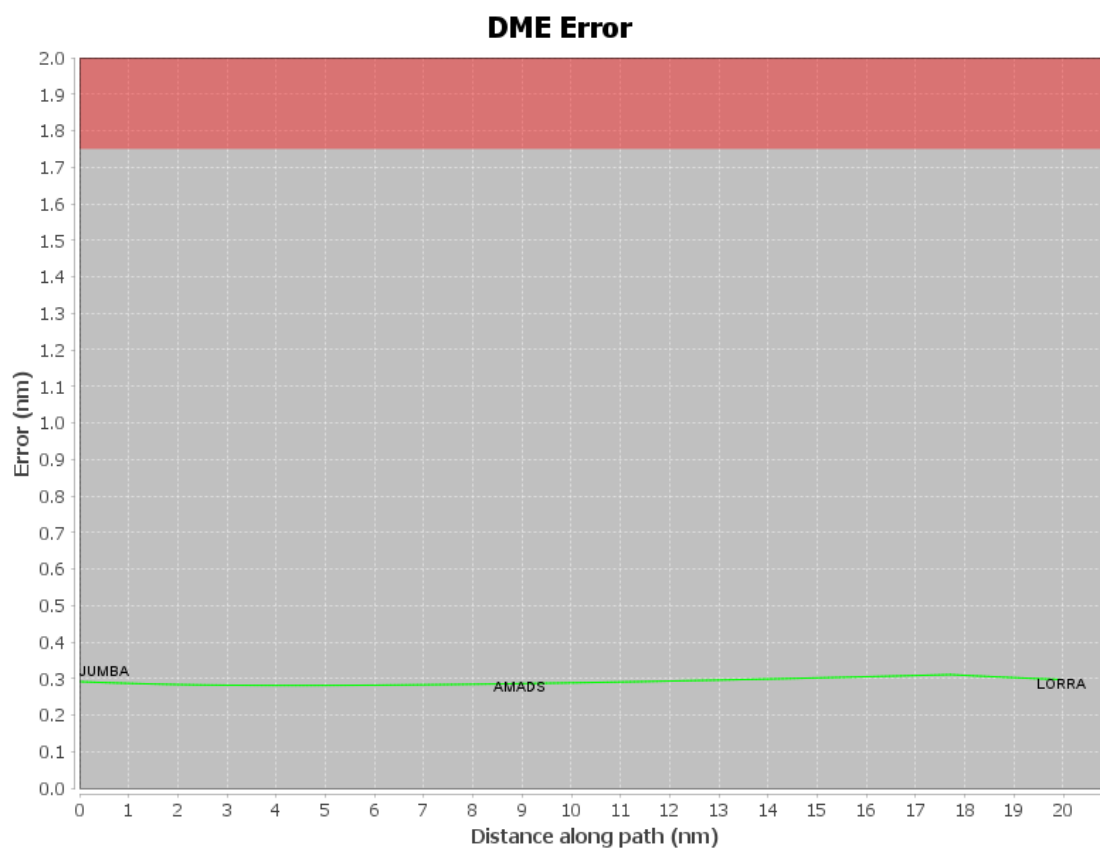
User Data Files

#	File Name
1	UserDMEsKMCO [IFPA] PRICY1 RNAV STAR_20200826_1453 EDT.udt

User DMEs

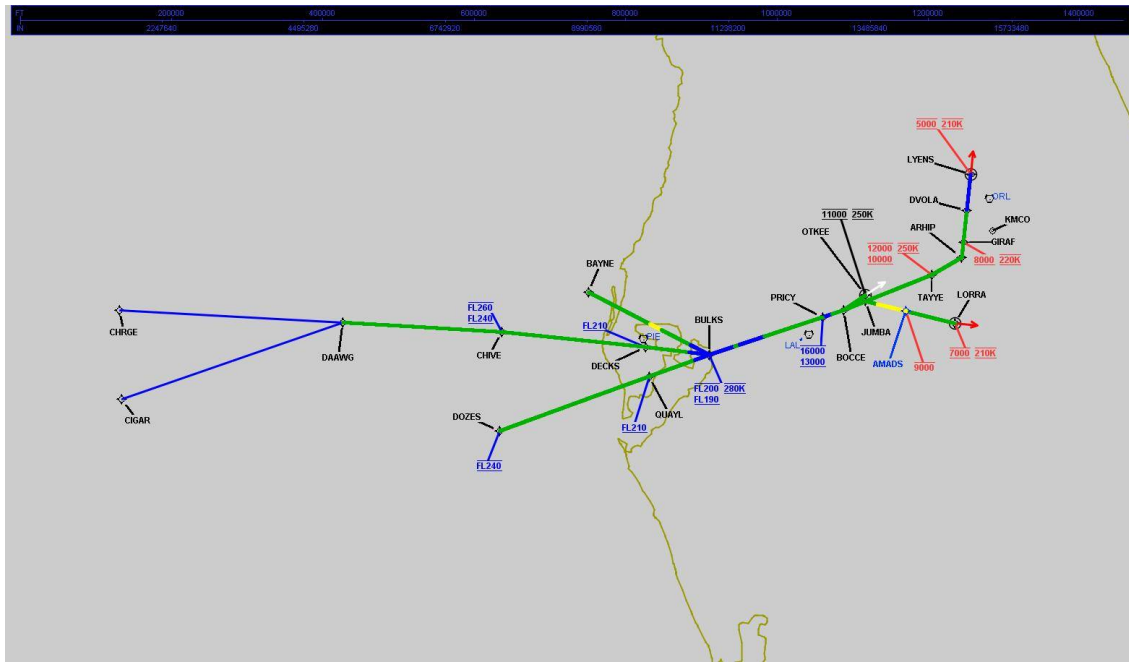
#	Name	Lat/Lon	MAGVAR	Range	Elevation [ft]	Frequency	Replaces	Status
1	OCF FAA 714002-25 OCF [IFPA]	N29° 10' 38.918", W082° 13' 34.802"	0.0 E	40	78.3	113.7	OCF FAA 714002-25	
ESV:		Bearing [True]: 190.0° to 235.0° Bearing [Mag]: 190.0° to 235.0°				Arc Distance: Out to 130.0 NM Altitude: 10000.0 to 20000.0 ft		
2	ORL FAA 694096-38 ORL [IFPA]	N28° 32' 33.802", W081° 20' 06.053"	0.0 E	130	101.6	112.2	ORL FAA 694096-38	
ESV:		Bearing [True]: 242.0° to 256.0° Bearing [Mag]: 242.0° to 256.0°				Arc Distance: Out to 165.0 NM Altitude: 18000.0 to 35000.0 ft		
3	MLB FAA 815809-14 MLB [IFPA]	N28° 06' 19.120", W080° 38' 06.460"	7.0 W	40	34	110.0	MLB FAA 815809-14	
ESV:		Bearing [True]: 270.0° to 331.0° Bearing [Mag]: 277.0° to 338.0°				Arc Distance: Out to 61.0 NM Altitude: 4000.0 to 17000.0 ft		
4	CTY FAA 704013-051 CTY [IFPA]	N29° 35' 56.403", W083° 02' 55.651"	2.0 W	40	33.8	112.0	CTY FAA 704013-051	
ESV:		Bearing [True]: 167.0° to 215.0° Bearing [Mag]: 169.0° to 217.0°				Arc Distance: Out to 130.0 NM Altitude: 15000.0 to 18000.0 ft		
5	OCF FAA 714002-18 OCF [IFPA]	N29° 10' 38.918", W082° 13' 34.802"	0.0 E	40	78.3	113.7	OCF FAA 714002-18	
ESV:		Bearing [True]: 117.0° to 180.0° Bearing [Mag]: 117.0° to 180.0°				Arc Distance: Out to 80.0 NM Altitude: 4000.0 to 20000.0 ft		

DME DME Assessment Results for PRICY2 path JUMBA_LORRA



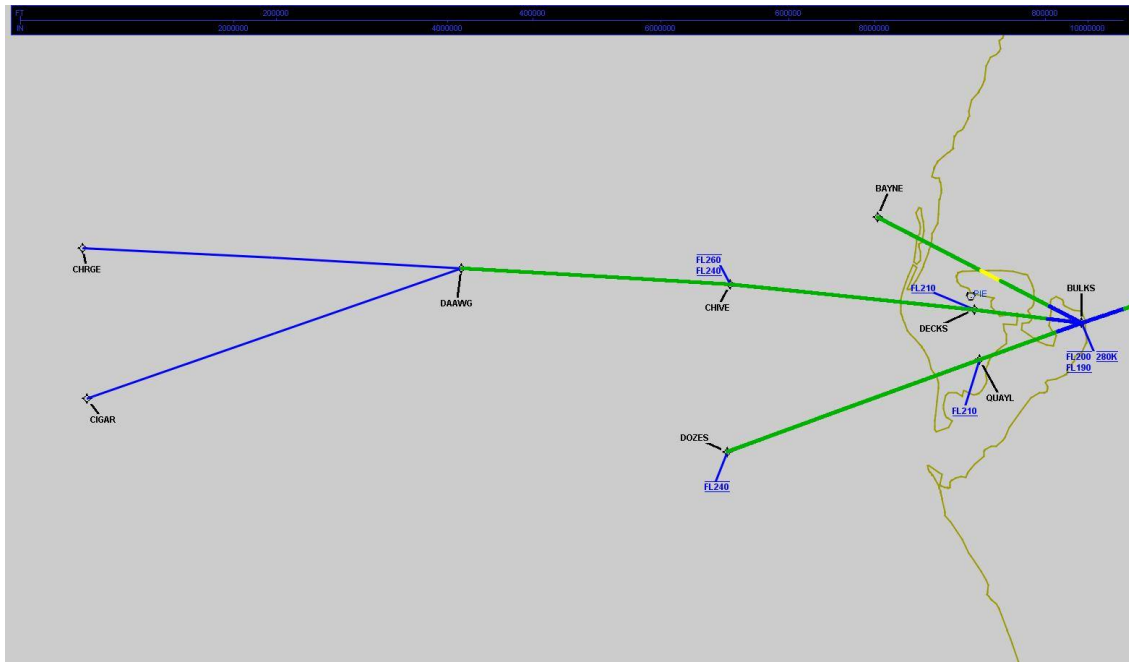
DME DME Assessment Results for PRICY2 path JUMBA_LORRA

Graphic Depiction 1



DME DME Assessment Results for PRICY2 path JUMBA_LORRA

Graphic Depiction 2



DME DME Assessment Results for PRICY2 path JUMBA_LORRA

Graphic Depiction 3

