

Flight Procedures Cover Page	Task Action: Abbreviated Amendment	Task Type: IAP	Estimated Chart Date: 09/10/2020	APWS Task ID: 0E22C62882714B659D7D93B60032B760	APWS Request ID: F2DB969BF2284995BFA6C4D5D1F06AC6
Procedure: HI - TACAN RWY 25 AMDT 4C		Enroute: NO	Specialist: Blanco, Joseph		Agreement Number:
Airport ID: KTOL	Airport Name: EUGENE F KRANZ TOLEDO EXPRESS		Airport City: TOLEDO		State: OH
Facility ID: TOL	Facility Type: TACAN	Flight Inspection Remark Type:			
<p>Procedure Comments: Airport Name Change from TOLEDO EXPRESS to EUGENE F KRANZ TOLEDO EXPRESS</p> <p>ABBREVIATED AMENDMENT</p> <p>PROCESSED IAW AIRCRAFT OPERATIONS GROUP (AJW-33) MEMO, OCTOBER 3, 2018, SUBJECT: FLIGHT INSPECTION REVIEW NOT REQUIRED.</p> <p>POC: Allan Will, AJV-A423, 405.954.6103.</p>					



TOLEDO, OHIO

17117

HI-TACAN RWY 25

TACAN Chan 72	APCH CRS 260°	Rwy Idg 10,599 TDZE 678 Arpt Elev 683
-------------------------	-------------------------	--

OLD

JAL-184 [USAF]

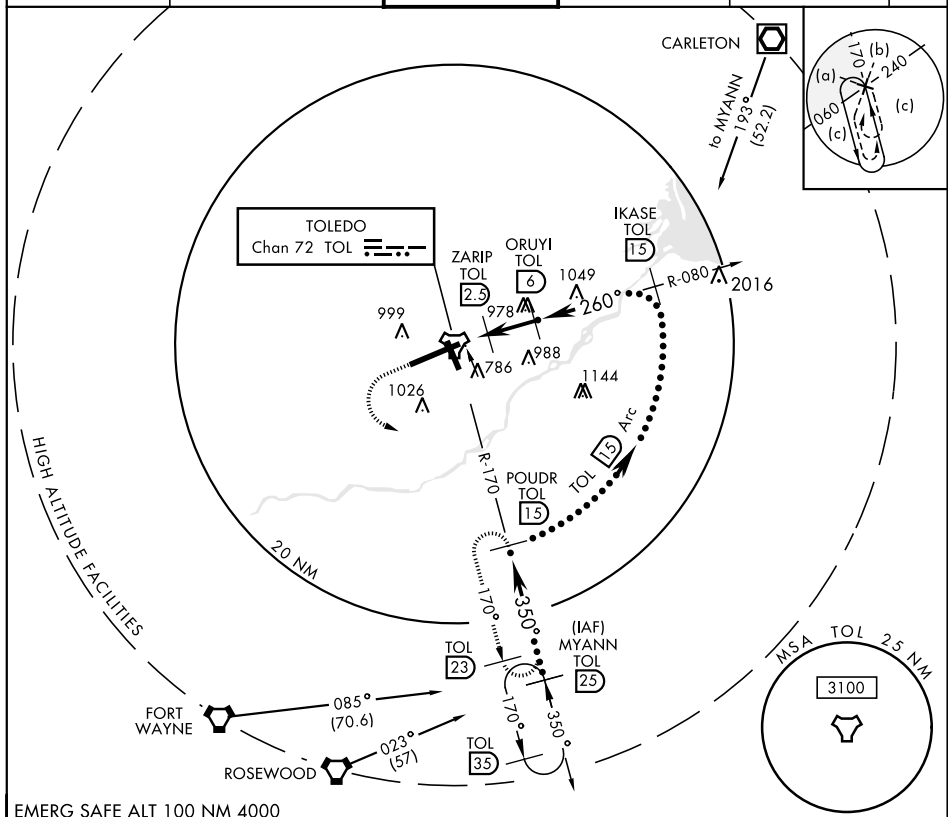
TOLEDO EXPRESS (KTOL)

* When ALS inop increase CAT C vis to 1 mile.



MISSED APPROACH: Climb to 3000 then left turn via TOL R-170 to POUDR and hold.

ATIS 118.75 290.225	TOLEDO APP CON 126.1 317.55	TOLEDO TOWER 118.1 285.4	GND CON 121.9 348.6	CLNC DEL 121.75 348.6	ASR
-------------------------------	---------------------------------------	------------------------------------	-------------------------------	---------------------------------	-----



EMERG SAFE ALT 100 NM 4000

3000 ↑ TOL R-170	POUDR TOL 15	MYANN R-170 25	ELEV 683	TDZE 678
TACAN IXOQY R-080 1	ZARIP R-080 2.5	ORUYI R-080 6	IKASE R-080 15	POUDR R-170 15
1240	2400	4000	10,000	15,000
0.8	5 NM			
CATEGORY	C	D	E	
S-25 *	1040-3/4 362 (400-3/4)	1040-1 362 (400-1)		
CIRCLING	1360-2 677 (700-2)	1400-2 1/4 717 (800-2 1/4)	1400-2 1/2 717 (800-2 1/2)	
HIRL Rwy 7-25 726 ± A				
MIRL Rwy 16-34 775 ± A				
REIL Rwy 16 and 34				
TDZL/CL Rwy 7				

TOLEDO, OHIO

41° 35' N-83° 48' W

TOLEDO EXPRESS (KTOL)

Amtd 4B 27APR17

HI-TACAN RWY 25