

Flight Procedures Cover Page	Task Action: P-NOTAM	Task Type: IAP	Estimated Chart Date: 05/16/2024	APWS Task ID: 0DB33B96D9C9492A8651147A47400069	APWS Project ID: E6AE85CCE1F5411097FD68EBEFA4FC00
Procedure: RNAV (GPS) RWY 31 AMDT 2B		Enroute: NO	Specialist: Brandenburg, Phillip		Agreement Number:
Airport ID: KIFA			Airport City: IOWA FALLS		State: IA
Facility ID:	Facility Type:	Flight Inspection Remark Type:			
<div>Procedure Comments: T TO P NOTAM. THIS CLEARS FDC 3/9928 CONTACT MIKE GARRITY 4059545602</div> <div><div>QUALITY 38 CHECKED</div><div>QUALITY 18 CHECKED</div></div>					

CURRENT

IOWA FALLS, IOWA

22307

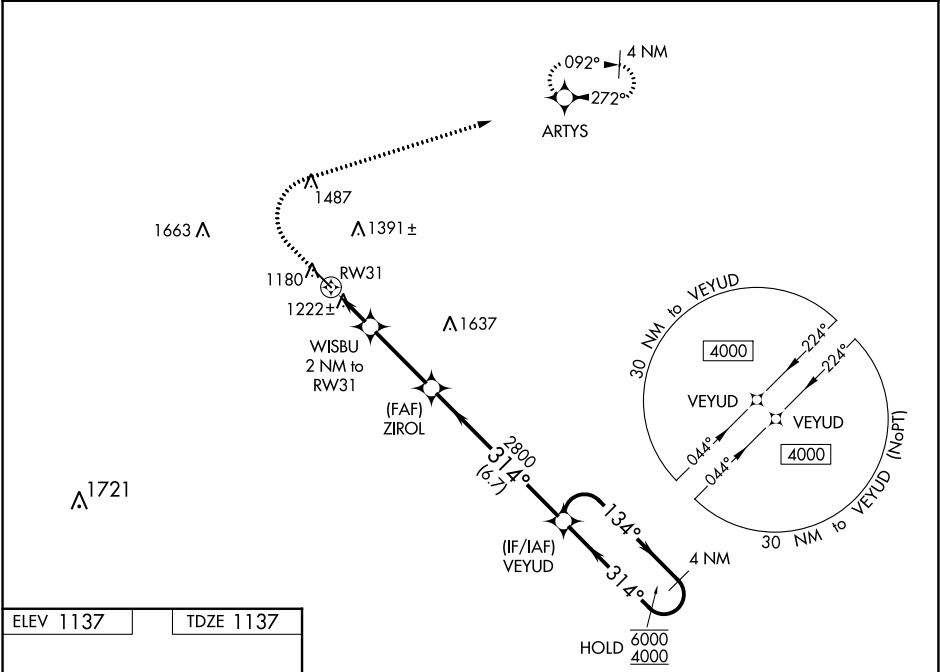
WAAS CH 86732 W31A	APP CRS 314°	Rwy Idg TDZE 1137 Apt Elev 1137	4600
--	------------------------	---	-------------

RNAV (GPS) RWY 31
IOWA FALLS MUNI (IFA)

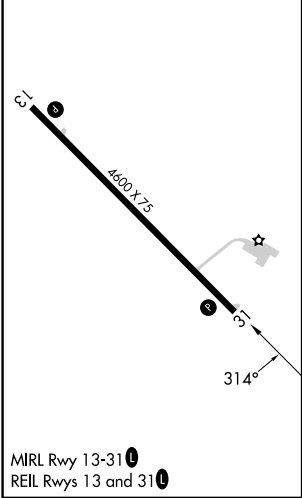
RNP APCH.	Rwy 31 helicopter visibility reduction below ¾ SM NA. For uncompensated Baro-VNAV systems, LNAV/VNAV NA below -17°C or above 54°C.
-----------	--

MISSED APPROACH: Climb to 1600 then
climbing right turn to 4000 direct ARTYS
and hold, continue climb-in-hold to 4000.

AWOS-3 120.425	WATERLOO APP CON ★ 118.9	UNICOM 122.8 (CTAF) 0
--------------------------	------------------------------------	--



ELEV 1137	TDZE 1137
-----------	-----------



1600 ↑	4000 ↗	ARTYS ✧	4 NM Holding Pattern			
* LNAV only	WISBU 2 NM to RW31		ZIROL 2800	VEYUD	134° → 6000 ← 314° 4000	
* 1 NM to RW31		1800*		GP 3.00° TCH 40		
1 NM		1 NM	3.1 NM	6.7 NM		
CATEGORY	A		B	C	D	
LPV DA			1387-1	250 (300-1)		
LNAV/ VNAV DA			1387-1	250 (300-1)		
LNAV MDA			1480-1	343 (400-1)		
CIRCLING	1540-1 403 (500-1)	1620-1 483 (500-1)	1760-1¾ 623 (700-1¾)	1800-2 663 (700-2)		

IOWA FALLS, IOWA
Amdt 2A 26MAR20

42°28'N-93°16'W

IOWA FALLS MUNI (IFA)
RNAV (GPS) RWY 31

NC-3, 02 NOV 2023 to 30 NOV 2023

NC-3, 02 NOV 2023 to 30 NOV 2023

KIFA IOWA FALLS MUNI, IA
RNAV (GPS) RWY 13, A1B
LNAV FINAL
1:100K

LNAB ZIROL to WISBU TRANSMISSION_LINE (1241)
19-068636

WISBU

ZIROL

KIFA IOWA FALLS MUNI, IA
RNAV (GPS) RWY 13, A1B
LNAV/VNAV FINAL
1:100K

LNAV/VNAV TREE (1237)
19-068590

ZIROL

