

WAAS CH 70331 W35A	APP CRS 352°	Rwy Idg TDZE 2426 Apt Elev 2430
--	------------------------	---

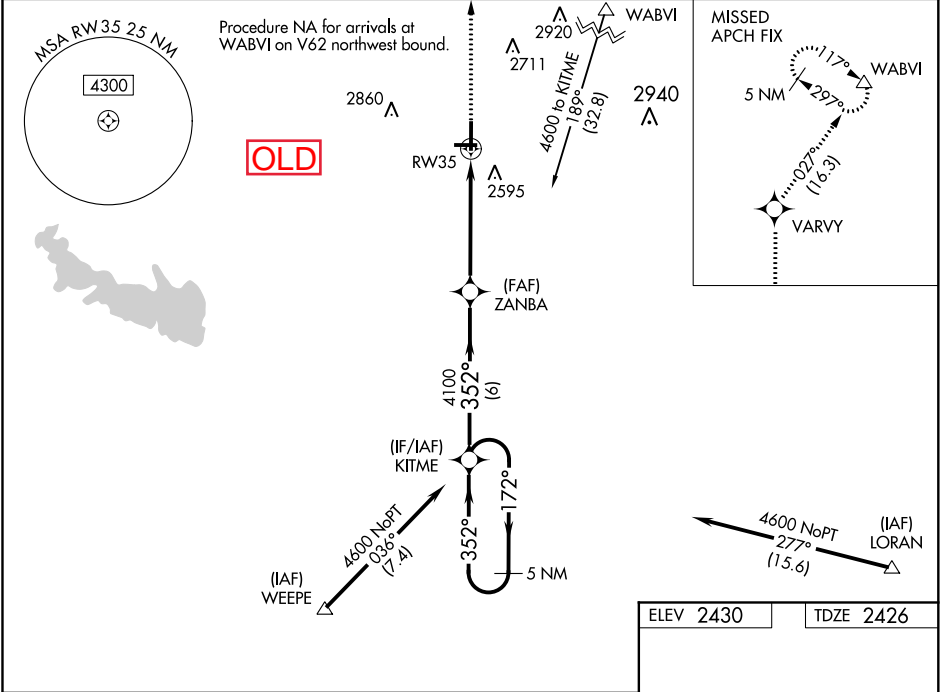
RNAV (GPS) RWY 35
WINSTON FIELD (SNK)

▼ Baro-VNAV NA when using Sweetwater altimeter setting. For uncompensated Baro-VNAV systems, LNAV/VNAV NA below -19°C (-2°F) or above 54°C (130°F). DME/DME RNP-0.3 NA.

▲ VDP NA with Sweetwater altimeter setting. When local altimeter setting not received, use Sweetwater altimeter setting and increase all DA 72 feet and all MDA 80 feet; increase LPV all Cats visibility 1/8 mile, LNAV/VNAV all Cats visibility 3/8 mile, and LNAV Cat C visibility 1/4 mile. Night landing: Rwy 8, 26, 17 NA.

MISSED APPROACH:
Climb to 5000 direct VARVY and on track 027° to WABVI and hold, continue climb-in-hold to 6000.

AWOS-3 119.925	FORT WORTH CENTER 127.45 290.3	UNICOM 122.8 (CTAF) 0
--------------------------	--	---------------------------------



VGSI and RNAV glidepath not coincident (VGSI Angle 3.00/TCH 40).

5 NM Holding Pattern KITME

4600 ← 172° → 352° → 352°

GP 3.00° TCH 45

4100

ZANBA 4100

6 NM 4.1 NM 1 NM

5000 VARVY WABVI

↑ tr 027° △

* LNAV only.

*1 NM to RW35

CATEGORY	A	B	C	D
LPV DA		2626-3/4	200 (200-3/4)	NA
LNAV/VNAV DA		2676-3/4 250 (300-3/4)		NA
LNAV MDA		2780-1 354 (400-1)		NA
CIRCLING	2920-1 490 (500-1)	2940-1 510 (600-1)	2940-1 1/2 510 (600-1 1/2)	NA

ELEV 2430 TDZE 2426

41

5599 X 100

1.3% UP →

4200 X 75

26

35

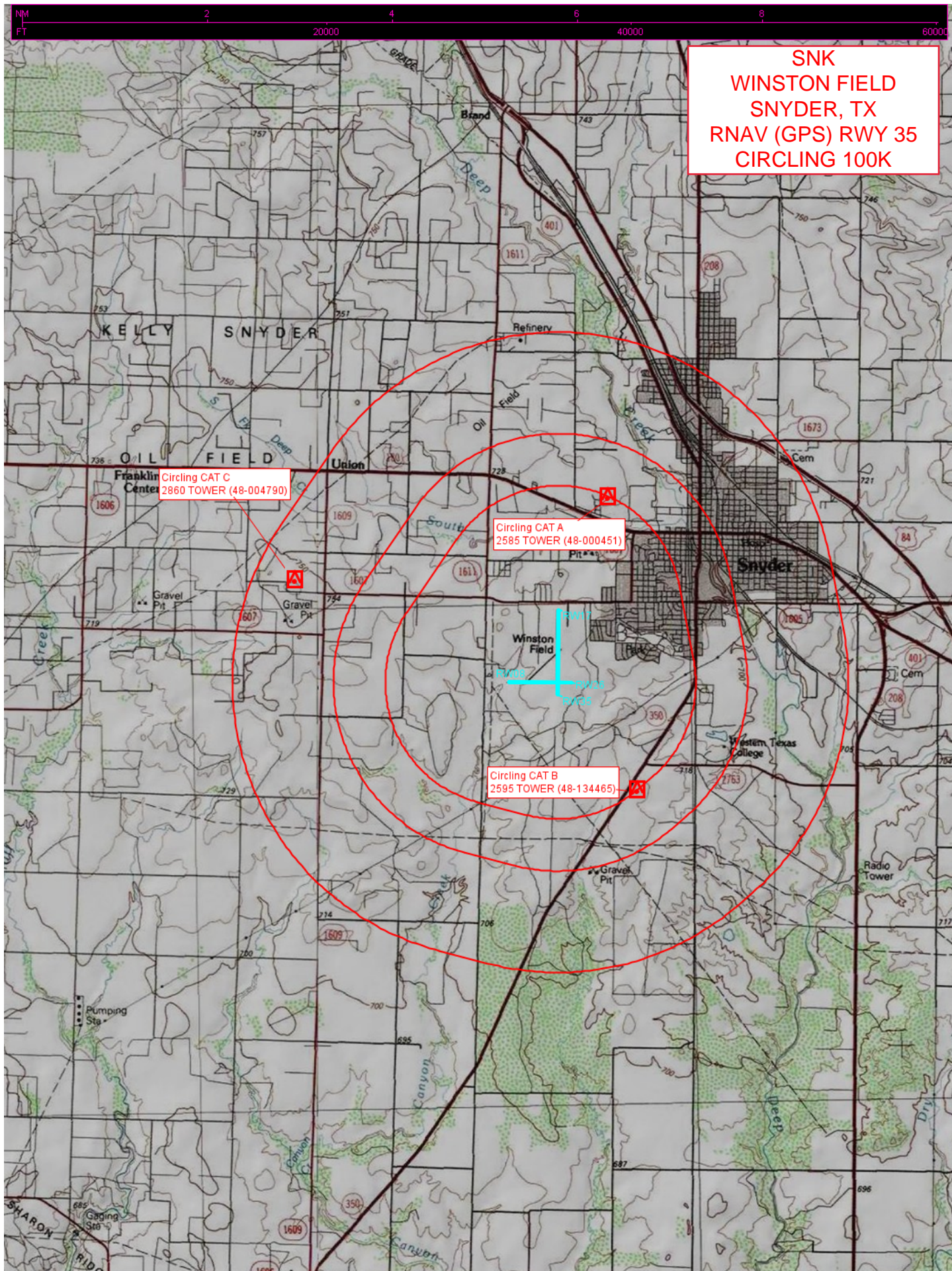
352° to RW35

REIL Rwy 17 and 35

MIRL Rwy 17-35 0

SC-2, 13 AUG 2020 to 10 SEP 2020

SC-2, 13 AUG 2020 to 10 SEP 2020



SNK
WINSTON FIELD
SNYDER, TX
RNAV (GPS) RWY 35
CIRCLING 100K

Circling CAT C
2860 TOWER (48-004790)

Circling CAT A
2585 TOWER (48-000451)

Circling CAT B
2595 TOWER (48-134465)