

Flight Procedures Cover Page	Task Action: Cancellation	Task Type: IAP	Estimated Chart Date: 12/26/2024	APWS Task ID: 0BFB401C80864C4E96ACC3FDC519B53D	APWS Project ID: F508524B49E746899E2AC4BE6DC02869
Procedure: LoM ME98 COPTER RNAV (GPS) 306 ORIG (SPECIAL)		Enroute: NO	Specialist: Smart, Phillip		Agreement Number:
Airport ID: ME98			Airport City: LONG ISLAND		State: ME
Facility ID:	Facility Type:	Flight Inspection Remark Type:			
<div>Procedure Comments: CANCELLATION OF PROCEDURE</div> <div>Processed IAW Technical Support Group (AJF-17) Memo dated 07/07/2021 Guidance for Procedural Changes Requiring Flight Inspection/Validation</div> <div>CONTACT ROBERT HAMILTON 405-954-4608</div>					



CANCEL

LONG ISLAND, MAINE

AL-11656 (FAA)

21196

APP CRS	Rwy Idg	N/A
306°	Surf Elev	88
	Apt Elev	65

COPTER RNAV (GPS) 306°

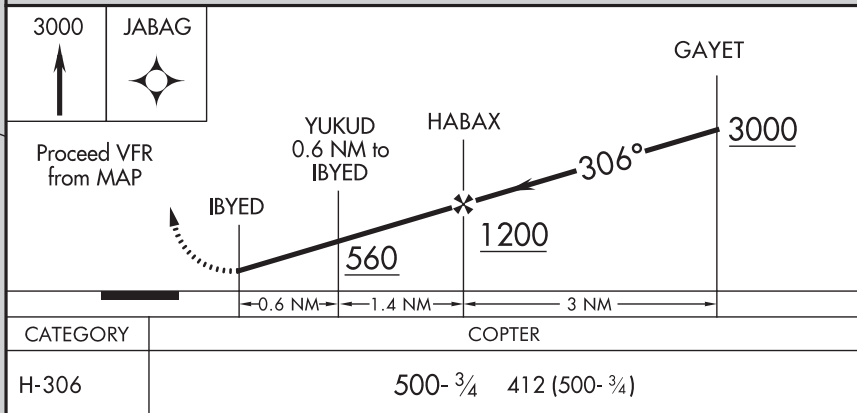
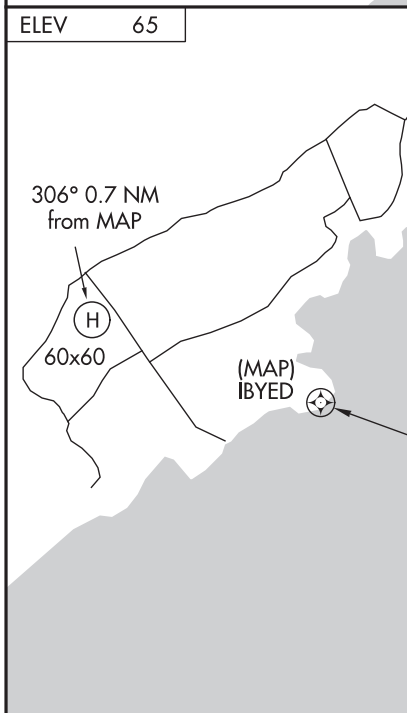
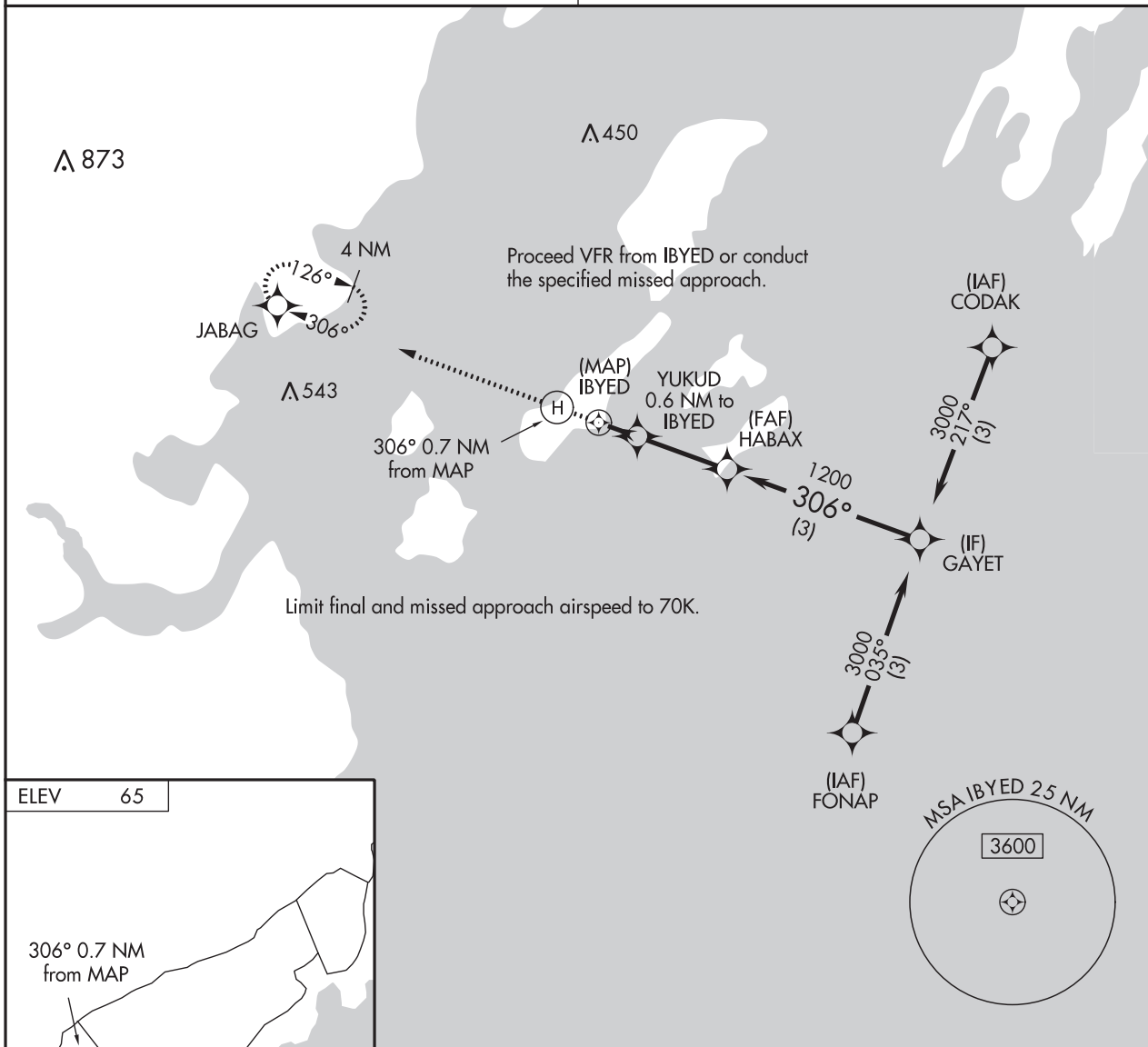
LONG ISLAND (ME98)

▲ NA Use Portland Intl Jetport altimeter setting.
Heliport lights controlled by photocell or prior arrangement.

MISSED APPROACH: Climb to 3000 direct JABAG and hold.

PWM ATIS
119.05

PORTLAND APP CON ★
119.75 269.35



LONG ISLAND, MAINE
Orig 15JUL21

43°41'N-070°10'W

LONG ISLAND (ME98)
COPTER RNAV (GPS) 306°