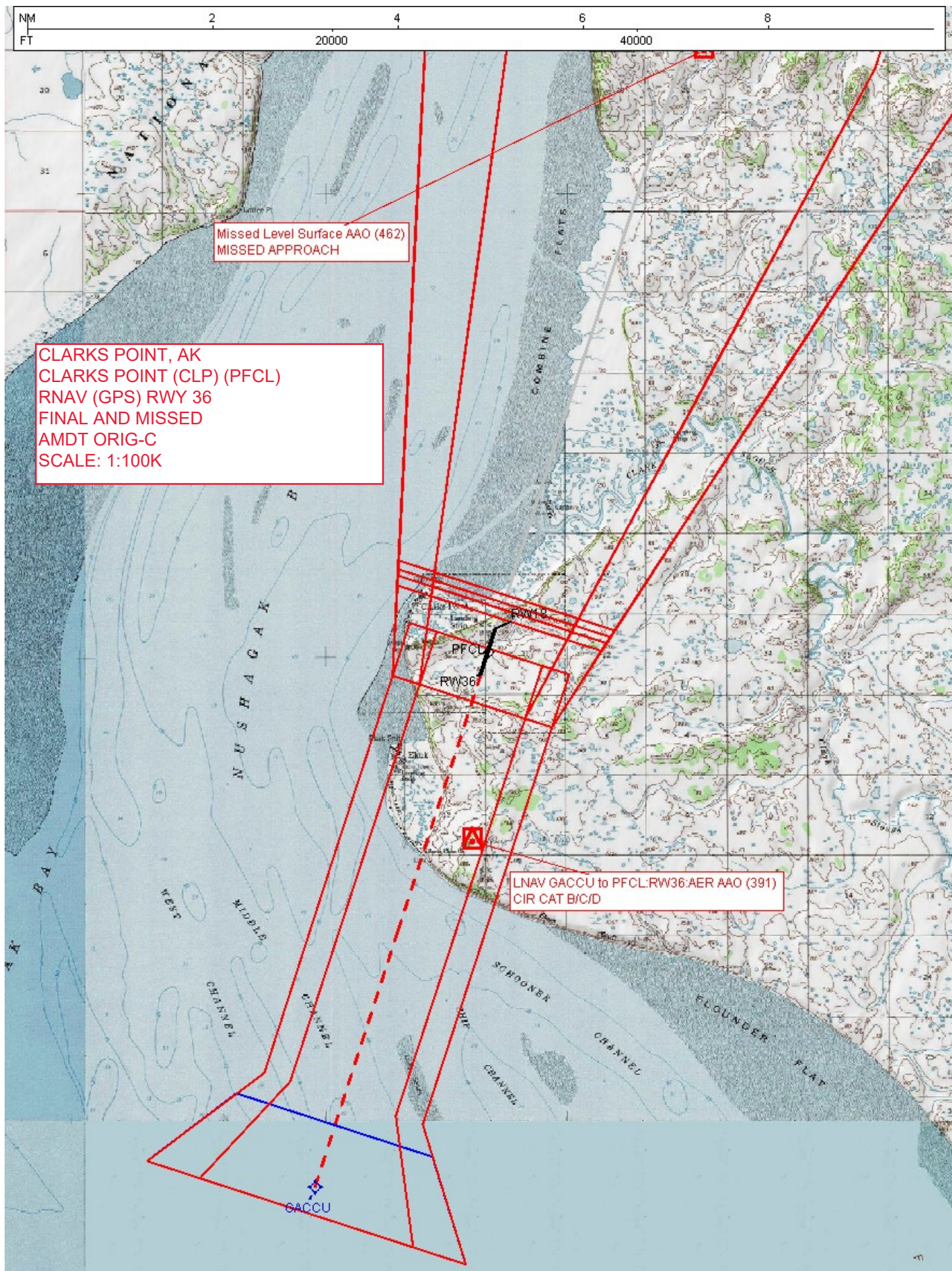
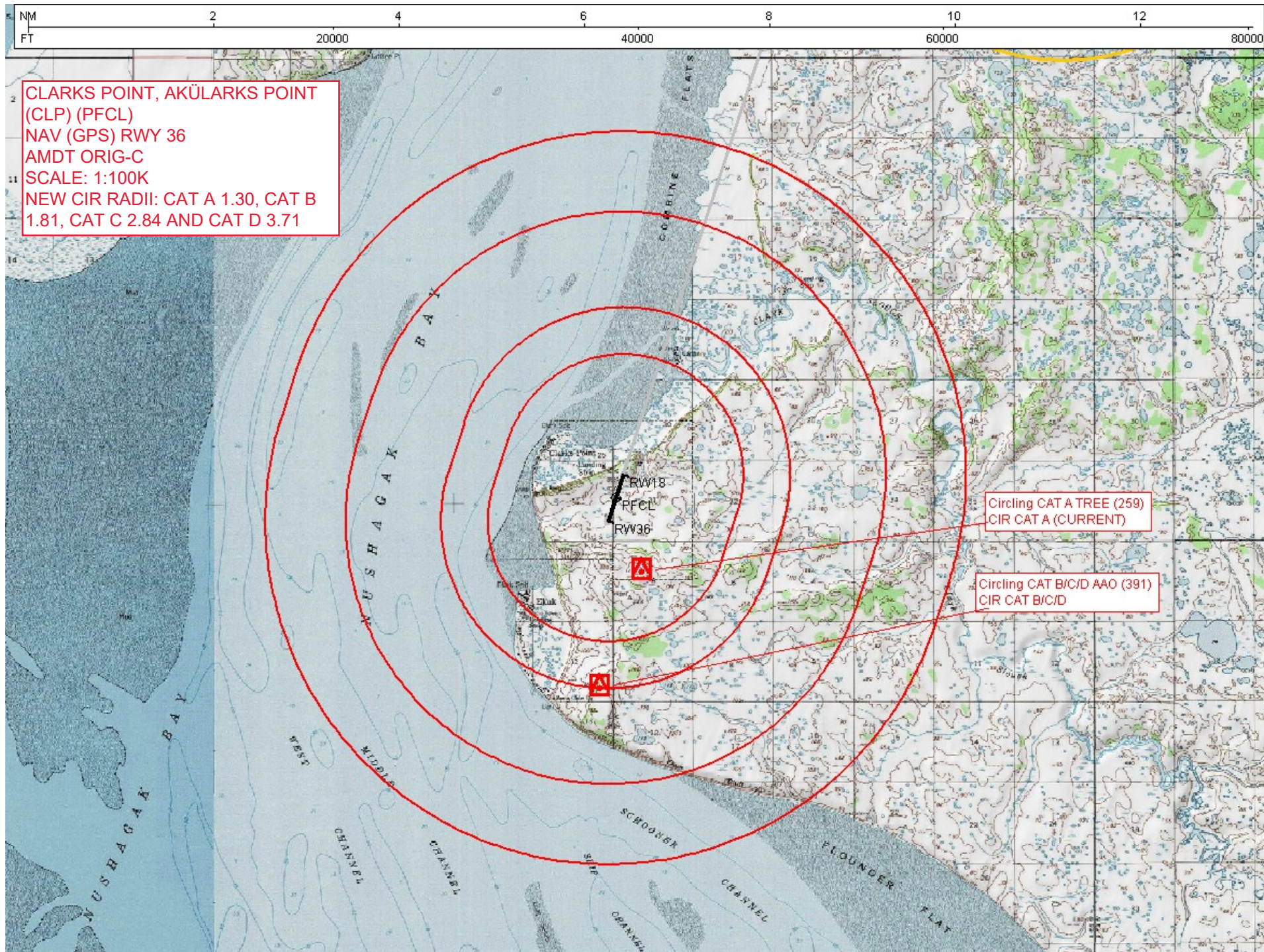


Flight Procedures Cover Page	Task Action: Abbreviated Amendment	Task Type: IAP	Estimated Chart Date: 05/19/2022	APWS Task ID: 0B939BF0F9854FBD9D245388482B84C0	APWS Project ID: FEE9E82732524C879D38E7557B8331AA
Procedure: RNAV (GPS) RWY 36 AMDT 0C		Enroute: NO	Specialist: Marsh, Andre		Agreement Number:
Airport ID: PFCL			Airport City: CLARKS POINT		State: AK
Facility ID:	Facility Type:	Flight Inspection Remark Type:			
<div>Procedure Comments: PROCESSED IAW TECHNICAL SUPPORT GROUP (AJF-17) MEMO DATED 07/07/2021, SUBJECT: GUIDANCE FOR PROCEDURAL CHANGES REQUIRING FLIGHT INSPECTION/VALIDATION  CIRCLING RADII INCREASE  JASON KRETSCHMER: 405-954-4019  <div>Digitally signed by <b>JASON KRETSCHMER</b> Mar 24, 2022</div></div> <div><div>QUALITY 10 CHECKED</div><div>QUALITY 41 CHECKED</div></div>					









APP CRS	Rwy Idg	3200
003°	TDZE	80
	Apt Elev	80

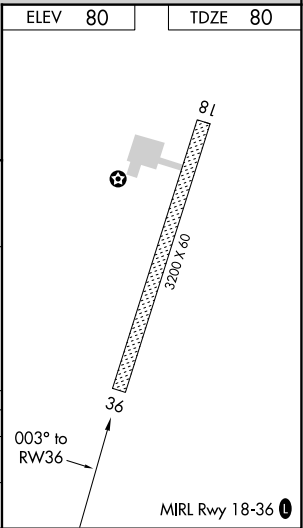
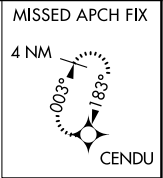
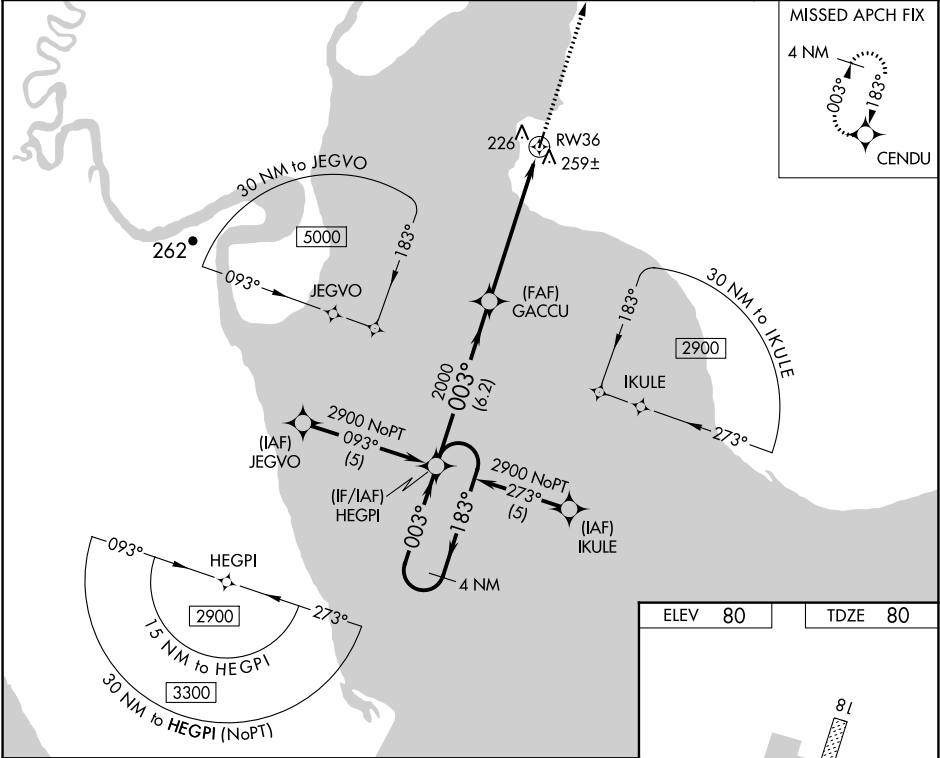
# RNAV (GPS) RWY 36

CLARKS POINT (CLP) (PFCL)

**NA** DME/DME RNP-0.3 NA. Procedure NA at night.  
When local altimeter setting not received, use Dillingham altimeter setting.  
Rwy 36 helicopter visibility reduction below 1 SM NA.

MISSED APPROACH: Climb to 2900 direct CENDU and hold.

AWOS-3P 121.45	DLG/PADL AWOS-3P 125.0	ANCHORAGE CENTER 132.75 282.35	CTAF 122.9
-------------------	---------------------------	-----------------------------------	---------------



4 NM Holding Pattern		HEGPI	2900	CENDU
2900		183°	003°	
		003°		
		GACCU	2000	
		3.05°	TCH 40	
		RW36		
		6.2 NM	5.8 NM	
CATEGORY	A	B	C	D
LNVA MDA	540-1	460 (500-1)	540-1½ 460 (500-1½)	540-1½ 460 (500-1½)
CIRCLING	600-1	520 (600-1)	600-1½ 520 (600-1½)	640-2 560 (600-2)