

Flight Procedures Cover Page	Task Action: Abbreviated Amendment	Task Type: IAP	Estimated Chart Date: 12/29/2022	APWS Task ID: 0B5A48673B2A46B5AE194AA25AA4183B	APWS Project ID: B0BF6C9F22504A8A942109490B525BD6
Procedure: ILS OR LOC RWY 11L AMDT 14E		Enroute: NO	Specialist: Mccartney, Michael		Agreement Number:
Airport ID: KTUS			Airport City: TUCSON		State: AZ
Facility ID: TUS	Facility Type: ILS	Flight Inspection Remark Type:			
<p>Procedure Comments: HARD DATE.</p> <p>ACTIVE AIRPORT (KTUS) AND NAVAID (I-TUS ILS/DME, TUS VORTAC, RYN NDB) DATA UTILIZED.</p> <p>REMOVES AVQ NDB AND FEEDER SEGMENT DINGO TO TACUB FROM PROCEDURE (AVQ NDB WILL BE DECOMMISSIONED ON 12/29/2022).</p> <p>PROCESSED IAW TECHNICAL SUPPORT GROUP (AJF-17) MEMO DATED 07/07/2021, SUBJECT: GUIDANCE FOR PROCEDURAL CHANGES REQUIRING FLIGHT INSPECTION/VALIDATION.</p> <p>CONTACT: ERIC SUSKI, AJV-A431, MANAGER, (405) 954-7331.</p> <p><i>Digitally signed by</i> ERIC N SUSKI Oct 31, 2022</p>					

QUALITY
26
CHECKED

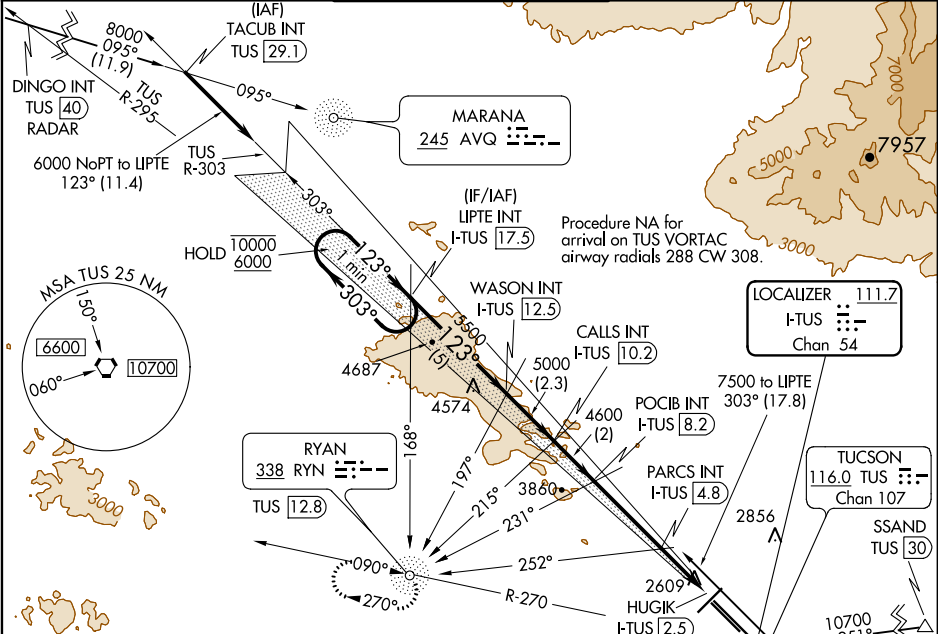
QUALITY
41
CHECKED

LOC/DME I-TUS 111.7 Chan 54	APP CRS 123°	Rwy Idg TDZE 2599 Apt Elev 2643
---	------------------------	---

ILS or LOC RWY 11L
TUCSON INTL (TUS)

ADF or RADAR required for arrivals at DINGO. ADF or DME required. DME required for arrivals at SSAND.	MALSR (AS)	MISSED APPROACH: Climb to 4000 then climbing right turn to 6000 on heading 300° and TUS VORTAC R-270 to RYN NDB/TUS 12.8 DME and hold.
For inop ALS, increase S-ILS Cat E visibility to RVR 4000, S-LOC 11L Cat E visibility to 2½ SM; PARCS FIX MINIMUMS: S-LOC 11L Cat C/D/E visibility to RVR 5500.		

ATIS 123.8 279.65	TUCSON APP CON 119.4 318.1	TUCSON TOWER 118.3 257.8	GND CON 124.4 348.6	CLNC DEL 126.65 326.2
-----------------------------	--------------------------------------	------------------------------------	-------------------------------	---------------------------------



Use I-TUS DME when on the localizer course.				
One Minute Holding Pattern				
LIPTTE INT I-TUS 17.5 WASON INT I-TUS 12.5 CALLS INT I-TUS 10.2 POCIB INT I-TUS 8.2 PARCS INT I-TUS 4.8 HUGIK I-TUS 2.5				
10000 6000 5500 5000 4600 4600 3480 4600 2609 2856 2853 10700 251 (30)				
GS 3.00° TCH 55 VGSi and ILS glidepath not coincident (VGSi Angle 3.00/TCH 73).				
-5 NM -2.3 NM -2 NM -3.4 NM -2.3 NM -0.4 NM				
CATEGORY	A	B	C	D E
S-ILS 11L	2800/24 201 (200-½)			
S-LOC 11L	3480-40	881 (900-¾)	3480-2	881 (900-2)
CIRCLING	3480-1 ¼	837 (900-1 ¼)	3480-2 ½ 837 (900-2 ½)	3660-3 1017 (1100-3) 3920-3 277 (1300-3)
PARCS FIX MINIMUMS				
S-LOC 11L	2960/24	361 (400-½)	2960/40	361 (400-¾)
CIRCLING	3160-1 517 (600-1)	3220-1 577 (600-1)	3220-1 ½ 577 (600-1 ½)	3660-3 1017 (1100-3) 3920-3 277 (1300-3)
TUCSON, ARIZONA Amdt 14D 15JUL21				

