

FEDERAL AVIATION ADMINISTRATION
FLIGHT STANDARDS SERVICE
STANDARD TERMINAL ARRIVAL (STAR)

Bearings, headings, courses, tracks and radials are magnetic. Elevations and altitudes are in feet, MSL. Altitudes are minimum altitudes unless otherwise indicated.
Ceilings are in feet above airport elevation. Distances are in nautical miles. Visibilities are in statute miles or feet RVR unless otherwise indicated.

Arrival Name	Number	STAR Computer Code	Superseded Number	Dated	Effective Date
EMMAS (RNAV)	ONE	EMMAS.EMMAS1	NONE		

TRANSITION ROUTES:

Transition Name	Transition Computer Codes	From FIX/NAVAID	To FIX/NAVAID	Course	Distance	MEA	MOCA	MAA	Crossing Altitudes / Fixes
HIGUH	HIGUH.EMMAS1	HIGUH	HIGUH						AT 16000
			NRRRG	297.99	17.80	4000	3100		
			DRLNG	297.75	08.39	4000	3100		
			JNTHN	297.63	10.94	4000	3100		AT 11000
			NUGGZ	283.50	11.60	4000	3100		AT/BELOW 9000
			EMMAS	230.27	05.21	4000	3100		
SHIKY	SHIKY.EMMAS1	SHIKY	SHIKY						
			OWINN	200.25	41.18	4000	3100		
			KAMMM	233.08	36.40	4000	3100		BETWEEN 11000 AND 13000
			LUUUK	181.59	09.91	4000	3100		
			KAALN	181.51	11.02	4000	3100		
			EMMAS	151.46	18.44	4000	3100		

ARRIVAL ROUTE DESCRIPTION:

FROM EMMAS ON TRACK 189.86/5.33 TO CROSS DOKKE AT 4000, THEN ON TRACK 180.84. EXPECT RADAR VECTORS TO FINAL APPROACH COURSE.

PBN REQUIREMENT NOTES:

RNAV 1 - DME/DME/IRU OR GPS

EQUIPMENT REQUIREMENT NOTES:

RADAR REQUIRED

PROCEDURAL DATA NOTES:

FIXES AND/OR HOLDING PATTERNS:

CHART HOLDING AT SADIE: HOLD W, RT, 076.90 INBOUND, 10 NM LEGS.

CHART HOLDING AT YOLLO: HOLD S, RT, 357.44 INBOUND, 10 NM LEGS.

CHART SADIE AND YOLLO AS STANDALONE WAYPOINTS.

COMMUNICATIONS:

CHART: ROCKFORD APP CON

AIRPORTS SERVED:

AIRPORT ID
KRFD

CITY
CHICAGO/ROCKFORD

STATE
IL



FEDERAL AVIATION ADMINISTRATION
FLIGHT STANDARDS SERVICE
STANDARD TERMINAL ARRIVAL (STAR)

Bearings, headings, courses, tracks and radials are magnetic. Elevations and altitudes are in feet, MSL. Altitudes are minimum altitudes unless otherwise indicated.
Ceilings are in feet above airport elevation. Distances are in nautical miles. Visibilities are in statute miles or feet RVR unless otherwise indicated.

Arrival Name	Number	STAR Computer Code	Superseded Number	Dated	Effective Date
EMMAS (RNAV)	ONE	EMMAS.EMMAS1	NONE		

LOST COMMUNICATIONS PREFERENCES:

REMARKS:

ADDITIONAL FLIGHT DATA:

DME/DME ASSESSMENT: SAT (RNP 2.0)
MAG VAR: KRFD 03W/2020
CHART AT DOKKE TERMINUS: LDG KRFD

FLIGHT INSPECTED BY:

MICHAEL A GREENWOOD

ORGANIZATION:

FPO

DATE:

11/29/2023

Flight Inspected Signature:

Digitally signed by

ROBERT G HAMILTON

Nov 30, 2023

DEVELOPED BY:

JOSEPH BOCIK, AIRSPACE/PROCEDURES MANAGER

CHICAGO ARTCC

7/3/2023

Developed By Signature:

Digitally signed by

CASIMIR L TABAKA

Sep 29, 2023

APPROVED BY:

JOHNNIE BAKER

AJV-A430

Approved By Signature:

Digitally signed by

CASIMIR L TABAKA

Sep 29, 2023

CHANGES:

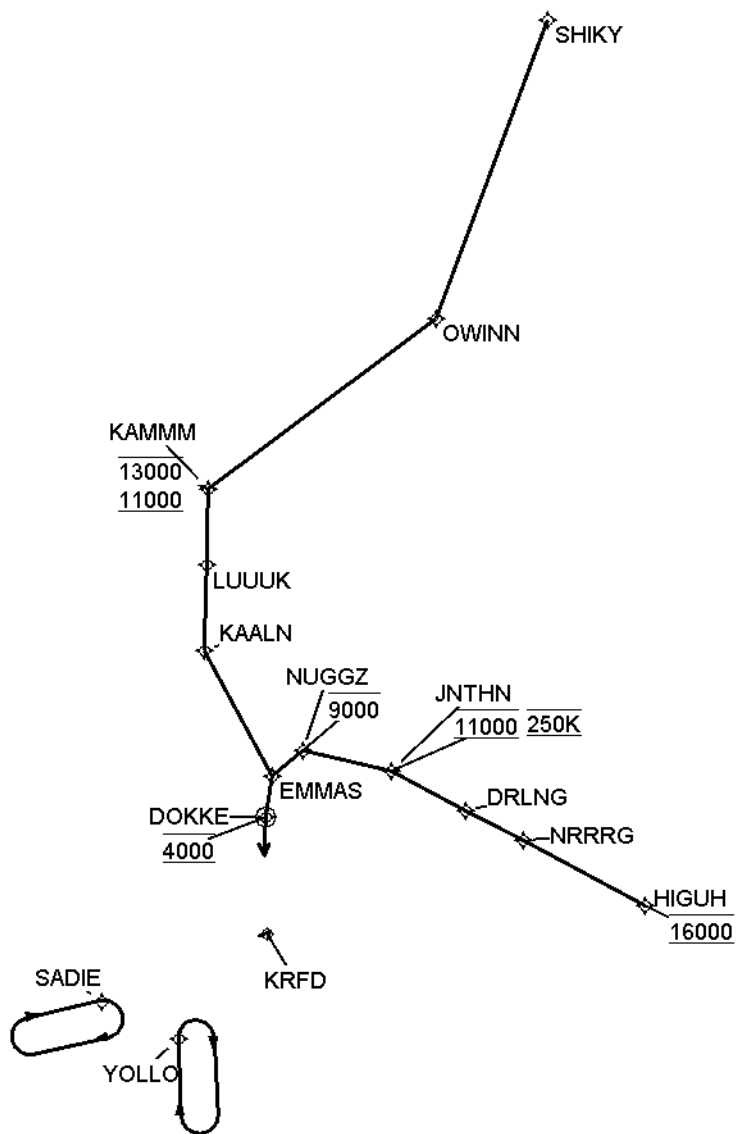
REASONS:

QUALITY
14
CHECKED

FEDERAL AVIATION ADMINISTRATION
FLIGHT STANDARDS SERVICE
STANDARD TERMINAL ARRIVAL (STAR)

Bearings, headings, courses, tracks and radials are magnetic. Elevations and altitudes are in feet, MSL. Altitudes are minimum altitudes unless otherwise indicated.
Ceilings are in feet above airport elevation. Distances are in nautical miles. Visibilities are in statute miles or feet RVR unless otherwise indicated.

Arrival Name	Number	STAR Computer Code	Superseded Number	Dated	Effective Date
EMMAS (RNAV)	ONE	EMMAS.EMMAS1	NONE		
Graphic Depiction 1					



FEDERAL AVIATION ADMINISTRATION
FLIGHT STANDARDS SERVICE
STAR (DATA RECORD)

Arrival Name EMMAS (RNAV)		Number ONE		STAR Computer Code EMMAS.EMMAS1		Superseded Number NONE		Dated	Effective Date
FIX/NAVAID	LAT/LONG	C	FO/FB	LEG TYPE	TC	DIST (NM)	ALTITUDE	SPEED	REMARKS
En Route Transition									
HIGUH	421804.84N / 0880004.06W	Y		IF			AT 16000		HIGUH.EMMAS1
NRRRG	422534.15N / 0882150.97W	Y	FB	TF	294.99	17.80			
DRLNG	422904.62N / 0883209.16W	Y	FB	TF	294.75	08.39			
JNTHN	423337.58N / 0884536.71W	Y	FB	TF	294.63	10.94	AT 11000	AT 250K	
NUGGZ	423543.41N / 0890103.61W	Y	FB	TF	280.50	11.60	AT/BELOW 9000		
EMMAS	423211.08N / 0890614.21W	Y	FB	TF	227.27	05.21			
En Route Transition									
SHIKY	441140.00N / 0882505.00W	Y		IF					SHIKY.EMMAS1
OWINN	433219.03N / 0884152.34W	Y	FB	TF	197.25	41.18			
KAMMM	430850.88N / 0892000.37W	Y	FB	TF	230.08	36.40	11000B13000		
LUUUK	425856.42N / 0891940.41W	Y	FB	TF	178.59	09.91			
KAALN	424755.00N / 0891916.99W	Y	FB	TF	178.51	11.02			
EMMAS	423211.08N / 0890614.21W	Y	FB	TF	148.46	18.44			
Common Route									
EMMAS	423211.08N / 0890614.21W	Y		IF					EMMAS.EMMAS1
DOKKE	422653.64N / 0890705.79W	Y	FO	TF	186.86	05.33	AT 4000		
KRFD				FM	177.84				

