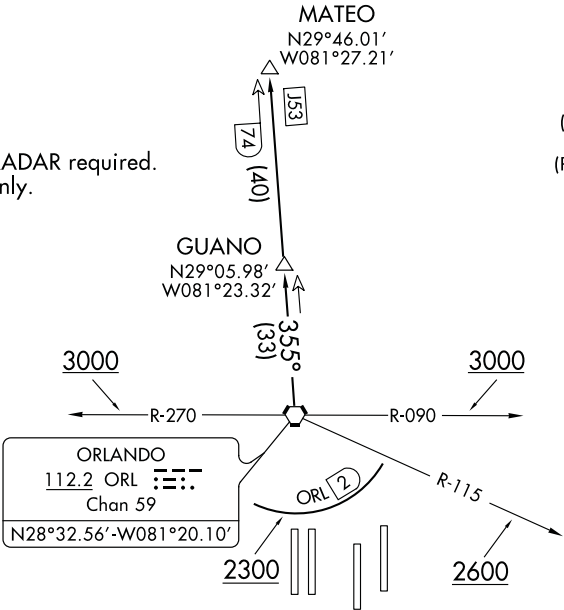


Flight Procedures Cover Page	Task Action: Cancellation	Task Type: SID	Estimated Chart Date: 10/07/2021	APWS Task ID: 094403F3F6D24D23B603D987D941C95C	APWS Project ID: 47F81D8CFE9D464F81C2D7FAD5BEF039
Procedure: SID JAGUAR SIX ORLANDO FL KMCO		Enroute: NO	Specialist: Byrns, Tommy		Agreement Number:
Airport ID: KMCO			Airport City: ORLANDO		State: FL
Facility ID:	Facility Type:	Flight Inspection Remark Type:			
<div>Procedure Comments: Cancellation</div> <div>Contact Allan Will, 405-954-6103.</div> <div>05/17/2021 QUALITY 14 CHECKED</div>					

TOP ALTITUDE:
5000

NOTE: DME and RADAR required.
NOTE: Turbojets only.

D-ATIS DEP
120.525
CLNC DEL
134.7 341.7
CPDLC
GND CON
126.4 (East)
121.8 (West)
ORLANDO TOWER
118.45 253.5
(Rwys 17L-35R, 17R-35L)
124.3 253.5
(Rwys 18L-36R, 18R-36L)



TAKEOFF MINIMUMS

Rwys 17L/R, 18L/R, 35L/R, 36L/R: Standard.

NOTE: Chart not to scale.



DEPARTURE ROUTE DESCRIPTION

TAKEOFF RUNWAYS 17L/R, 18L/R: Climb on heading as assigned, thence
TAKEOFF RUNWAYS 35L/R: Climb on heading as assigned. Cross ORL VORTAC R-115 at or above 2600, cross ORL VORTAC R-090 or R-270 at or above 3000, thence
TAKEOFF RUNWAYS 36L/36R: Climb on heading as assigned. Cross 2 DME south of ORL VORTAC at or above 2300, cross ORL VORTAC R-090 or R-270 at or above 3000, thence
 for vectors to ORL VORTAC R-355 to GUANO, then on ORL VORTAC R-355 to MATEO. Maintain 5000. Expect further clearance to filed altitude/flight level 10 minutes after departure.