

DME DME Assessment Results for RKSTR1 path ELLDA_PEHTY

Results Summary

Flyability:	Completed
DME/DME:	Completed - No Critical DMEs
Name:	Bob CTR Graham
Project File:	C:\Users\Bob CTR Graham\Desktop\AREA NAV Projects and TARGETS Files\LAS METROPLEX\KLAS FINAL PACKAGES\RKSTR\20200721_KLAS RKSTR.tgs
Output File:	C:\Users\Bob CTR Graham\Desktop\AREA NAV Projects and TARGETS Files\LAS METROPLEX\KLAS FINAL PACKAGES\RKSTR\New Forms FELAA 7-21-2020\KLAS [IFPA] RKSTR1 20200721_1854 MST\ELLDA_PEHTY\KLAS RKSTR1 RNAV STAR ELLDA PEHTY 20200721_1854 MST.pdf
Procedure Name:	RKSTR1
Software: DmeDmePlugin:	6.1.0
Date/Time:	07/21/2020 18:54 MST
Databases:	DTED Level o MAX

Failures

No Failures

Warnings

No Warnings

Notes For Flight Check

None

Flight Plan

Name	Type	Lat/Lon	Altitude (ft)	VNAV Mode	Ground Speed (kts)	Turn Type	Leg Type
ELLDA	WP	N34° 58' 22.12", W113° 24' 29.63"	24000	VNAV	280	FLY_BY	TF
JJEAN	WP	N35° 17' 03.90", W113° 42' 05.01"	24000	VNAV	280	FLY_BY	TF
PEHTY	WP	N35° 45' 30.55", W114° 09' 11.11"	14000	VNAV	280	FLY_BY	TF

Flyability

Flight Type:	RNAV_STAR
Selected Airport:	KLAS [IFPA]
Climb Gradient:	None assigned
Speeds:	200 Ground Speed to 11000 FT
	240 Ground Speed to 18000 FT
	260 Ground Speed to 24000 FT
	340 Ground Speed above 24000 FT
Descent During a Turn:	Allowed
VNAV Mode:	Flight Plan

DME DME Assessment Results for RKSTR1 path ELLDA_PEHTY

DME/DME	
RNP:	RNP 2
Flight Mode:	Manual
Line of Sight (DTED Level 0 Max):	Evaluated
Inertial Drift:	Enabled
Initial Drift:	0.558 NM
INS Drift Rate:	8.0 NM/Hour
Range Mode:	OSV
RNP Edges:	Evaluated
Min DME Range:	3.0 NM
DME Types:	DME, VOR-DME, VORTAC
DME Include Angles:	30 to 150
Critical DMEs:	Allowed
DoD Facilities:	Not included
Foreign Facilities:	Not included
High DMEs:	Included
Low DMEs:	Included
Terminal DMEs:	Included
Flight Check DMEs:	Not selected
Higher Altitudes:	Not Evaluated
Near Maximum Altitude:	Not Evaluated
Automatic ESVs:	Not enabled
Disabled DMEs:	None

DME/DME (Continued)										
DMEs Used										
#	Name	Lat/Lon	MAGVAR	Range	Type	Source	Critical	Status	Time	Distance
1	EED	N34° 45' 57.62", W114° 28' 26.77"	15.0 E	130	H	IFPA	NO	Enabled	69.1 %	69.1 %
2	LAS	N36° 04' 46.93", W115° 09' 35.27"	15.0 E	130	H	IFPA	NO	Enabled	100 %	100 %
3	GOG	N35° 53' 39.30", W115° 29' 45.90"	0.0 E	130	H	IFPA	NO	Enabled	15.5 %	15.5 %
4	GBN	N32° 57' 22.53", W112° 40' 27.38"	14.0 E	130	H	IFPA	NO	Enabled	3.8 %	3.8 %
5	IGM	N35° 15' 37.85", W113° 56' 02.69"	15.0 E	40	L	IFPA	NO	Enabled	51.8 %	51.8 %
6	BLD	N35° 59' 44.84", W114° 51' 48.88"	15.0 E	130	H	IFPA	NO	Enabled	60.2 %	60.2 %
7	BLH	N33° 35' 45.83", W114° 45' 40.58"	14.0 E	130	H	IFPA	NO	Enabled	49.6 %	49.6 %
8	DRK	N34° 42' 09.19", W112° 28' 49.23"	14.0 E	130	H	IFPA	NO	Enabled	54.6 %	54.6 %
9	PGS	N35° 37' 28.96", W113° 32' 40.08"	15.0 E	130	H	IFPA	NO	Enabled	100 %	100 %
10	TBC	N36° 07' 16.72", W111° 16' 10.52"	15.0 E	130	H	IFPA	NO	Enabled	15.9 %	15.9 %
11	PKE	N34° 06' 07.10", W114° 40' 55.44"	15.0 E	130	H	IFPA	NO	Enabled	67.8 %	67.8 %

Flight Check DME Selection						
Distance [NM]	Selected DMEs					Alternate
0.0	EED	PGS	DRK	BLD	PKE	BLH
29.7	PGS	BLD	EED	IGM	DRK	LAS
32.6	BLD	IGM	EED	PGS	LAS	PKE
35.3	EED	LAS	IGM	PGS	PKE	
40.5	LAS	EED	PGS	IGM		
41.2	PGS	IGM	LAS			
59.0	PGS	IGM	LAS	BLD		

DME DME Assessment Results for RKSTR1 path ELLDA_PEHTY

Inertial Drift Segments

#	Start Location	End Location	Length [NM]
---	----------------	--------------	-------------

Available DMEs by Waypoints

Waypoint Before	Waypoint After	DME List
ELLDA	JJEAN	GBN, TBC, EED, BLD, PKE, DRK, PGS, GOG, BLH, LAS
JJEAN	PEHTY	EED, BLD, PKE, DRK, PGS, GOG, IGM, LAS, BLH

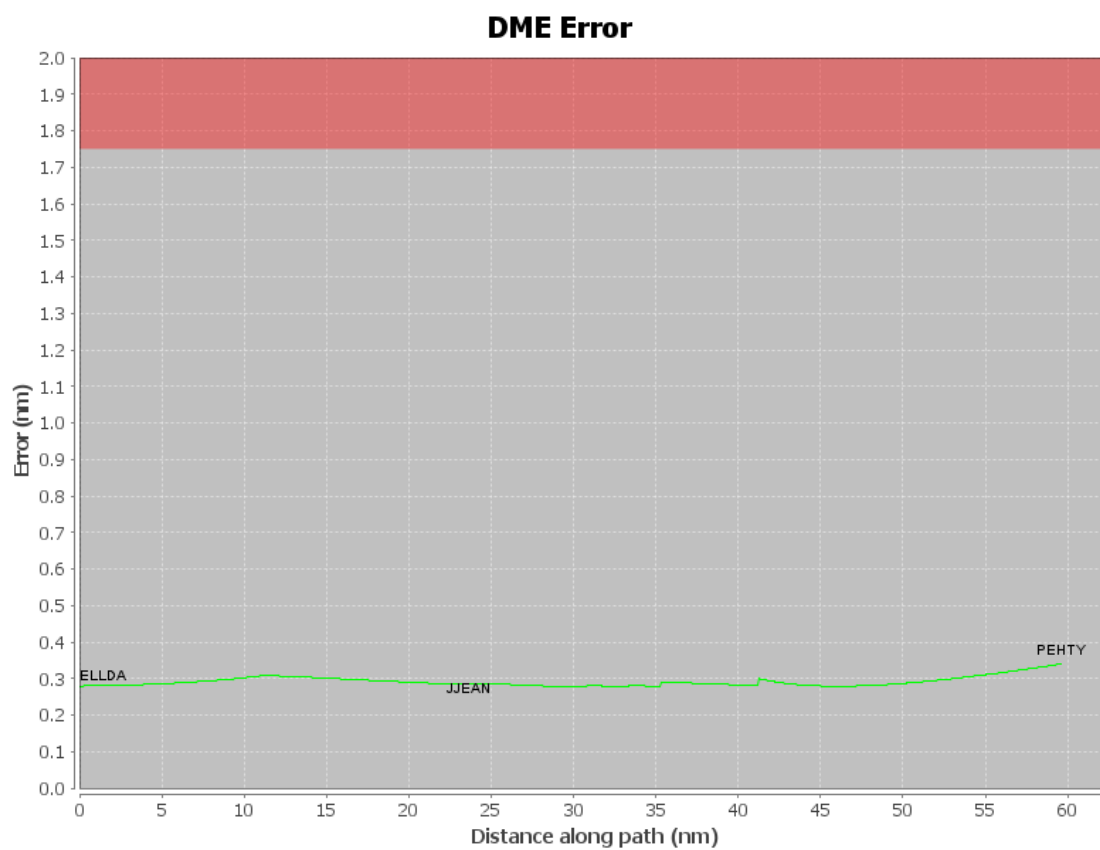
User Data Files

#	File Name
1	New Analysis.udt
2	UserDMEsKLAS [IFPA] RKSTR1 RNAV STAR_20190906_1204 MST.udt

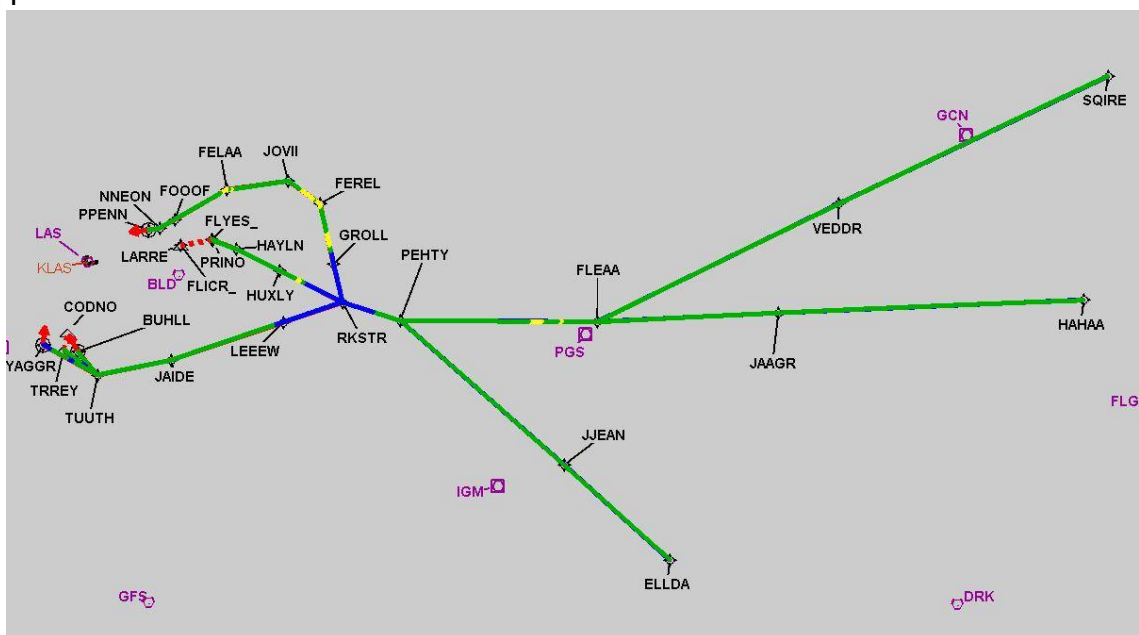
User DMEs

#	Name	Lat/Lon	MAGVAR	Range	Elevation [ft]	Frequency	Replaces	Status
1	UDT ESV EED EED [IFPA]	N34° 45' 57.62", W114° 28' 26.77"	15.0 E	130	689	115.2	UDT ESV EED	
ESV:		Bearing [True]: 348.0° to 3.0° Bearing [Mag]: 333.0° to 348.0°				Arc Distance: Out to 99.0 NM Altitude: 6600.0 to 12800.0 ft		
2	UDT ESV DRK DRK [IFPA]	N34° 42' 09.19", W112° 28' 49.23"	14.0 E	130	5003.3	114.1	UDT ESV DRK	
ESV:		Bearing [True]: 310.0° to 17.0° Bearing [Mag]: 296.0° to 3.0°				Arc Distance: Out to 95.0 NM Altitude: 11900.0 to 45000.0 ft		
3	UDT ESV PKE PKE [IFPA]	N34° 06' 07.10", W114° 40' 55.44"	15.0 E	130	1049.9	117.9	UDT ESV PKE	
ESV:		Bearing [True]: 282.0° to 4.0° Bearing [Mag]: 267.0° to 349.0°				Arc Distance: Out to 107.0 NM Altitude: 12900.0 to 13100.0 ft		
4	UDT ESV IGM IGM [IFPA]	N35° 15' 37.85", W113° 56' 02.69"	15.0 E	40	3428.5	108.8	UDT ESV IGM	
ESV:		Bearing [True]: 331.0° to 342.0° Bearing [Mag]: 316.0° to 327.0°				Arc Distance: Out to 66.0 NM Altitude: 8600.0 to 10100.0 ft		
5	UDT ESV MMM MMM [IFPA]	N36° 46' 09.31", W114° 16' 38.83"	16.0 E	40	2106.3	114.3	UDT ESV MMM	
ESV:		Bearing [True]: 190.0° to 209.0° Bearing [Mag]: 174.0° to 193.0°				Arc Distance: Out to 69.0 NM Altitude: 6600.0 to 13100.0 ft		
6	UDT ESV PGS PGS [IFPA]	N35° 37' 28.96", W113° 32' 40.08"	15.0 E	130	4760	112.0	UDT ESV PGS	
ESV:		Bearing [True]: 300.0° to 313.0° Bearing [Mag]: 285.0° to 298.0°				Arc Distance: Out to 60.0 NM Altitude: 8600.0 to 10100.0 ft		
7	UDT ESV LAS LAS [IFPA]	N36° 04' 46.93", W115° 09' 35.27"	15.0 E	130	2158.8	116.9	UDT ESV LAS	
ESV:		Bearing [True]: 96.0° to 132.0° Bearing [Mag]: 81.0° to 117.0°				Arc Distance: Out to 88.0 NM Altitude: 11900.0 to 45000.0 ft		

DME DME Assessment Results for RKSTR1 path ELLDA_PEHTY

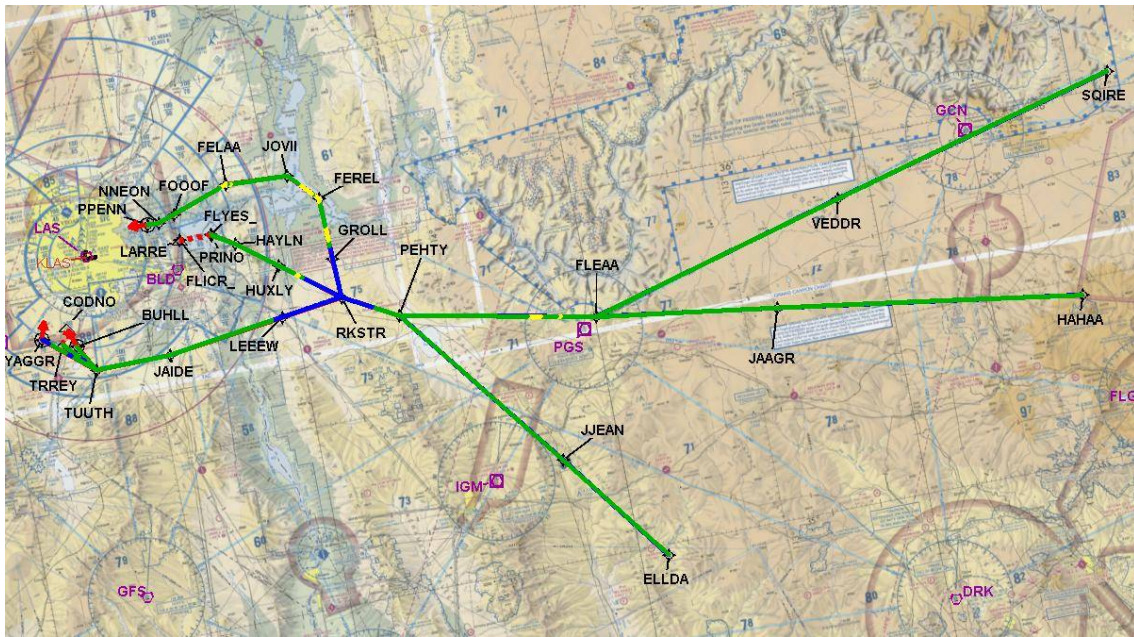


Graphic Depiction 1



DME DME Assessment Results for RKSTR1 path ELLDA_PEHTY

Graphic Depiction 2



DME DME Assessment Results for RKSTR1 path HAHA PPENN

Results Summary

Flyability:	Completed
DME/DME:	Completed - No Critical DMEs
Name:	Bob CTR Graham
Project File:	C:\Users\Bob CTR Graham\Desktop\AREA NAV Projects and TARGETS Files\LAS METROPLEX\KLAS FINAL PACKAGES\RKSTR\20200721_KLAS RKSTR.tgs
Output File:	C:\Users\Bob CTR Graham\Desktop\AREA NAV Projects and TARGETS Files\LAS METROPLEX\KLAS FINAL PACKAGES\RKSTR\New Forms FELAA 7-21-2020\KLAS [IFPA] RKSTR1 20200721_1854 MST\HAHA PPENN\KLAS RKSTR1 RNAV STAR HAHA PPENN 20200721_1854 MST.pdf
Procedure Name:	RKSTR1
Software: DmeDmePlugin:	6.1.0
Date/Time:	07/21/2020 18:54 MST
Databases:	DTED Level o MAX

Failures

No Failures

Warnings

No Warnings

Notes For Flight Check

None

Flight Plan

Name	Type	Lat/Lon	Altitude (ft)	VNAV Mode	Ground Speed (kts)	Turn Type	Leg Type
HAHA	WP	N35° 27' 21.83", W111° 51' 43.96"	24000	VNAV	280	FLY_BY	TF
JAAGR	WP	N35° 34' 54.90", W112° 53' 20.97"	24000	VNAV	280	FLY_BY	TF
FLEAA	WP	N35° 39' 07.31", W113° 29' 46.63"	22000	VNAV	280	FLY_BY	TF
PEHTY	WP	N35° 45' 30.55", W114° 09' 11.11"	14000	VNAV	280	FLY_BY	TF
RKSTR	WP	N35° 50' 18.66", W114° 20' 03.23"	14000	VNAV	280	FLY_BY	TF
GROLL	WP	N35° 56' 43.01", W114° 20' 19.17"	11000	VNAV	280	FLY_BY	TF
FEREL	WP	N36° 06' 57.99", W114° 20' 44.76"	10000	VNAV	250	FLY_BY	TF
JOVII	WP	N36° 11' 36.28", W114° 26' 10.39"	10000	VNAV	250	FLY_BY	TF
FELAA	WP	N36° 12' 04.87", W114° 38' 49.75"	8500	VNAV	250	FLY_BY	TF
FOOOF	WP	N36° 08' 57.34", W114° 50' 15.37"	7000	VNAV	220	FLY_BY	TF
NNEON	WP	N36° 07' 59.50", W114° 53' 45.85"	6000	VNAV	220	FLY_BY	TF
PPENN	WP	N36° 08' 06.18", W114° 55' 57.97"	6000	VNAV	210	FLY_OVER	TF

DME DME Assessment Results for RKSTR1 path HAHA_PENN

Flyability	
Flight Type:	RNAV_STAR
Selected Airport:	KLAS [IFPA]
Climb Gradient:	None assigned
Speeds:	200 Ground Speed to 11000 FT
	240 Ground Speed to 18000 FT
	260 Ground Speed to 24000 FT
	340 Ground Speed above 24000 FT
Descent During a Turn:	Allowed
VNAV Mode:	Flight Plan

DME/DME	
RNP:	RNP 2
Flight Mode:	Manual
Line of Sight (DTED Level 0 Max):	Evaluated
Inertial Drift:	Enabled
Initial Drift:	0.558 NM
INS Drift Rate:	8.0 NM/Hour
Range Mode:	OSV
RNP Edges:	Evaluated
Min DME Range:	3.0 NM
DME Types:	DME, VOR-DME, VORTAC
DME Include Angles:	30 to 150
Critical DMEs:	Allowed
DoD Facilities:	Not included
Foreign Facilities:	Not included
High DMEs:	Included
Low DMEs:	Included
Terminal DMEs:	Included
Flight Check DMEs:	Not selected
Higher Altitudes:	Not Evaluated
Near Maximum Altitude:	Not Evaluated
Automatic ESVs:	Not enabled
Disabled DMEs:	None

DME DME Assessment Results for RKSTR1 path HAHA_PENN

DME/DME (Continued)										
DMEs Used										
#	Name	Lat/Lon	MAGVAR	Range	Type	Source	Critical	Status	Time	Distance
1	INW	N35° 03' 41.76", W110° 47' 42.07"	14.0 E	130	H	IFPA	NO	Enabled	30.1 %	30.9 %
2	DRK	N34° 42' 09.19", W112° 28' 49.23"	14.0 E	130	H	IFPA	NO	Enabled	52.7 %	54 %
3	PKE	N34° 06' 07.10", W114° 40' 55.44"	15.0 E	130	H	IFPA	NO	Enabled	21.8 %	22.4 %
4	LAS	N36° 04' 46.93", W115° 09' 35.27"	15.0 E	130	H	IFPA	NO	Enabled	67.9 %	67.1 %
5	EED	N34° 45' 57.62", W114° 28' 26.77"	15.0 E	130	H	IFPA	NO	Enabled	39.9 %	39.9 %
6	GOG	N35° 53' 39.30", W115° 29' 45.90"	0.0 E	130	H	IFPA	NO	Enabled	1.7 %	1.8 %
7	IGM	N35° 15' 37.85", W113° 56' 02.69"	15.0 E	40	L	IFPA	NO	Enabled	29.7 %	29.8 %
8	PXR	N33° 25' 58.86", W111° 58' 12.73"	12.0 E	130	H	IFPA	NO	Enabled	5.8 %	5.9 %
9	MMM	N36° 46' 09.31", W114° 16' 38.83"	16.0 E	40	L	IFPA	NO	Enabled	11 %	10.1 %
10	GCN	N35° 57' 37.23", W112° 08' 45.77"	15.0 E	40	L	IFPA	NO	Enabled	24.2 %	24.8 %
11	FLG	N35° 08' 49.97", W111° 40' 26.95"	14.0 E	130	H	IFPA	NO	Enabled	46.4 %	47.6 %
12	BLD	N35° 59' 44.84", W114° 51' 48.88"	15.0 E	130	H	IFPA	NO	Enabled	65.1 %	64.4 %
13	PGS	N35° 37' 28.96", W113° 32' 40.08"	15.0 E	130	H	IFPA	NO	Enabled	71 %	72.2 %
14	TBC	N36° 07' 16.72", W111° 16' 10.52"	15.0 E	130	H	IFPA	NO	Enabled	37.3 %	38.3 %

DME DME Assessment Results for RKSTR1 path HAHAA_PPENN

Flight Check DME Selection						
Distance [NM]	Selected DMEs					Alternate
0.0	DRK	INW	TBC	FLG	GCN	PGS
42.7	PGS	DRK	TBC	EED	FLG	INW
53.0	DRK	TBC	PGS	EED	FLG	PKE
65.8	EED	DRK	PGS	FLG	PKE	BLD
74.0	EED	DRK	BLD	FLG	LAS	PKE
81.8	EED	DRK	BLD	LAS	PKE	GOG
82.6	DRK	IGM	EED	BLD	LAS	PKE
85.8	PGS	IGM	BLD	EED	LAS	PKE
86.8	EED	PGS	IGM	BLD	LAS	
88.6	PGS	IGM	EED	LAS		
89.1	PGS	IGM	LAS	DRK		
89.2	PGS	IGM	EED	LAS		
91.6	PGS	IGM	EED	LAS	DRK	
92.1	PGS	IGM	LAS	DRK		
98.6	PGS	IGM	LAS			
111.9	PGS	IGM	LAS	BLD		
118.1						
132.1	IGM	BLD				
133.1	IGM	BLD	PGS			
133.4	IGM	BLD	LAS	PGS		
135.5	IGM	BLD	PGS			
137.9	PGS	BLD				
139.7	IGM	BLD	MMM	LAS	PGS	
140.3	MMM	BLD	PGS			
140.3	IGM	BLD	MMM	LAS	PGS	
141.3	IGM	BLD	PGS			
141.5	IGM	BLD	MMM	LAS	PGS	
144.4	IGM	BLD	PGS	MMM		
145.0	IGM	BLD	LAS	MMM	PGS	
149.2	PGS	BLD	MMM	EED	LAS	
149.5	EED	LAS	MMM	BLD		
150.3	MMM	LAS				
153.4	EED	LAS	MMM	BLD		
156.4	EED	LAS	BLD			
157.0	EED	LAS	MMM	BLD		
158.0	EED	LAS	BLD			
166.2	BLD	LAS				

Inertial Drift Segments			
#	Start Location	End Location	Length [NM]
1	N35° 47' 39.22", W114° 14' 01.90"	N35° 58' 44.14", W114° 20' 24.20"	13.9875

Available DMEs by Waypoints		
Waypoint Before	Waypoint After	DME List
HAHAA	JAAGR	FLG, INW, GCN, TBC, EED, PXR, BLD, PKE, DRK, PGS, LAS
JAAGR	FLEAA	FLG, INW, TBC, EED, BLD, PKE, DRK, PGS, GOG, LAS
FLEAA	PEHTY	FLG, EED, BLD, PKE, DRK, PGS, GOG, IGM, LAS
PEHTY	RKSTR	BLD, PGS, IGM, LAS
RKSTR	GROLL	
GROLL	FEREL	BLD, MMM, PGS, IGM, LAS
FEREL	JOVII	BLD, MMM, PGS, IGM, LAS
JOVII	FELAA	EED, BLD, MMM, PGS, IGM, LAS
FELAA	FOOOF	EED, BLD, MMM, LAS
FOOOF	NNEON	BLD, LAS
NNEON	PPENN	BLD, LAS

DME DME Assessment Results for RKSTR1 path HAHA PPENN

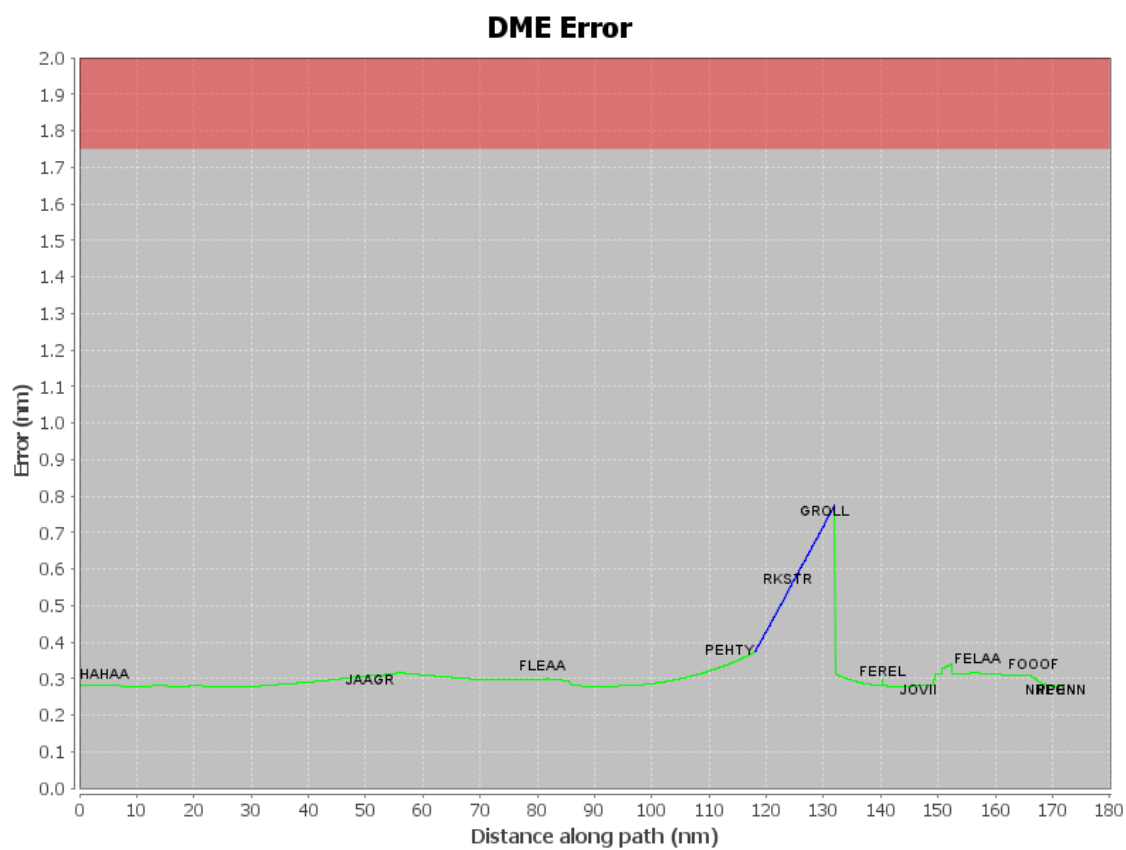
User Data Files

#	File Name
1	New Analysis.udt
2	UserDMESKLAS [IFPA] RKSTR1 RNAV STAR_20190906_1204 MST.udt

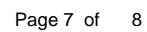
User DMEs

#	Name	Lat/Lon	MAGVAR	Range	Elevation [ft]	Frequency	Replaces	Status
1	UDT ESV EED EED [IFPA]	N34° 45' 57.62", W114° 28' 26.77"	15.0 E	130	689	115.2	UDT ESV EED	
ESV:		Bearing [True]: 348.0° to 3.0° Bearing [Mag]: 333.0° to 348.0°				Arc Distance: Out to 99.0 NM Altitude: 6600.0 to 12800.0 ft		
2	UDT ESV DRK DRK [IFPA]	N34° 42' 09.19", W112° 28' 49.23"	14.0 E	130	5003.3	114.1	UDT ESV DRK	
ESV:		Bearing [True]: 310.0° to 17.0° Bearing [Mag]: 296.0° to 3.0°				Arc Distance: Out to 95.0 NM Altitude: 11900.0 to 45000.0 ft		
3	UDT ESV PKE PKE [IFPA]	N34° 06' 07.10", W114° 40' 55.44"	15.0 E	130	1049.9	117.9	UDT ESV PKE	
ESV:		Bearing [True]: 282.0° to 4.0° Bearing [Mag]: 267.0° to 349.0°				Arc Distance: Out to 107.0 NM Altitude: 12900.0 to 13100.0 ft		
4	UDT ESV IGM IGM [IFPA]	N35° 15' 37.85", W113° 56' 02.69"	15.0 E	40	3428.5	108.8	UDT ESV IGM	
ESV:		Bearing [True]: 331.0° to 342.0° Bearing [Mag]: 316.0° to 327.0°				Arc Distance: Out to 66.0 NM Altitude: 8600.0 to 10100.0 ft		
5	UDT ESV MMM MMM [IFPA]	N36° 46' 09.31", W114° 16' 38.83"	16.0 E	40	2106.3	114.3	UDT ESV MMM	
ESV:		Bearing [True]: 190.0° to 209.0° Bearing [Mag]: 174.0° to 193.0°				Arc Distance: Out to 69.0 NM Altitude: 6600.0 to 13100.0 ft		
6	UDT ESV PGS PGS [IFPA]	N35° 37' 28.96", W113° 32' 40.08"	15.0 E	130	4760	112.0	UDT ESV PGS	
ESV:		Bearing [True]: 300.0° to 313.0° Bearing [Mag]: 285.0° to 298.0°				Arc Distance: Out to 60.0 NM Altitude: 8600.0 to 10100.0 ft		
7	UDT ESV LAS LAS [IFPA]	N36° 04' 46.93", W115° 09' 35.27"	15.0 E	130	2158.8	116.9	UDT ESV LAS	
ESV:		Bearing [True]: 96.0° to 132.0° Bearing [Mag]: 81.0° to 117.0°				Arc Distance: Out to 88.0 NM Altitude: 11900.0 to 45000.0 ft		

DME DME Assessment Results for RKSTR1 path HAHA PPENN

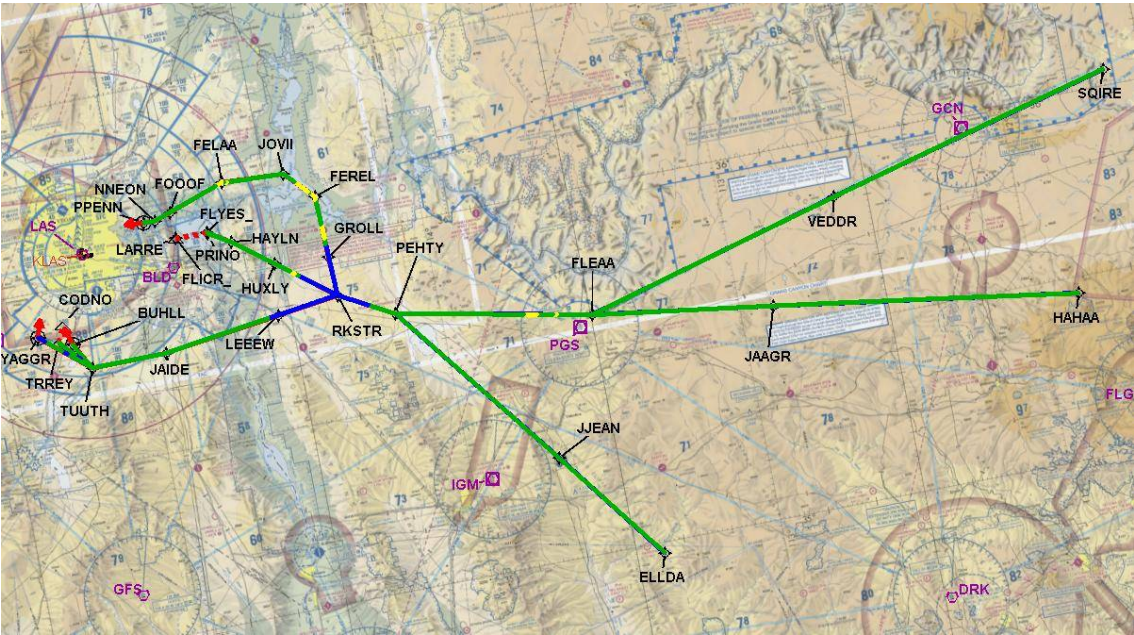


Graphic Depiction 1



DME DME Assessment Results for RKSTR1 path HAHA_PENN

Graphic Depiction 2



DME DME Assessment Results for RKSTR1 path HAYLN_PRINO

Results Summary

Flyability:	Completed
DME/DME:	Completed - No Critical DMEs
Name:	Bob CTR Graham
Project File:	C:\Users\Bob CTR Graham\Desktop\AREA NAV Projects and TARGETS Files\LAS METROPLEX\KLAS FINAL PACKAGES\RKSTR\20200721_KLAS RKSTR.tgs
Output File:	C:\Users\Bob CTR Graham\Desktop\AREA NAV Projects and TARGETS Files\LAS METROPLEX\KLAS FINAL PACKAGES\RKSTR\New Forms FELAA 7-21-2020\KLAS [IFPA] RKSTR1 20200721_1854 MST\HAYLN_PRINO\KLAS RKSTR1 RNAV STAR HAYLN PRINO 20200721_1854 MST.pdf
Procedure Name:	RKSTR1
Software: DmeDmePlugin:	6.1.0
Date/Time:	07/21/2020 18:54 MST
Databases:	DTED Level o MAX

Failures

No Failures

Warnings

No Warnings

Notes For Flight Check

None

Flight Plan

Name	Type	Lat/Lon	Altitude (ft)	VNAV Mode	Ground Speed (kts)	Turn Type	Leg Type
HAYLN	WP	N36° 02' 15.12", W114° 39' 17.57"	8000	VNAV	250	FLY_BY	TF
PRINO	WP	N36° 04' 23.60", W114° 43' 38.86"	8000	VNAV	210	FLY_BY	TF

Flyability

Flight Type:	RNAV_STAR
Selected Airport:	KLAS [IFPA]
Climb Gradient:	None assigned
Speeds:	200 Ground Speed to 11000 FT
	240 Ground Speed to 18000 FT
	260 Ground Speed to 24000 FT
	340 Ground Speed above 24000 FT
Descent During a Turn:	Allowed
VNAV Mode:	Flight Plan

DME DME Assessment Results for RKSTR1 path HAYLN_PRINO

DME/DME	
RNP:	RNP 2
Flight Mode:	Manual
Line of Sight (DTED Level 0 Max):	Evaluated
Inertial Drift:	Enabled
Initial Drift:	0.558 NM
INS Drift Rate:	8.0 NM/Hour
Range Mode:	OSV
RNP Edges:	Evaluated
Min DME Range:	3.0 NM
DME Types:	DME, VOR-DME, VORTAC
DME Include Angles:	30 to 150
Critical DMEs:	Allowed
DoD Facilities:	Not included
Foreign Facilities:	Not included
High DMEs:	Included
Low DMEs:	Included
Terminal DMEs:	Included
Flight Check DMEs:	Not selected
Higher Altitudes:	Not Evaluated
Near Maximum Altitude:	Not Evaluated
Automatic ESVs:	Not enabled
Disabled DMEs:	None

DME/DME (Continued)										
DMEs Used										
#	Name	Lat/Lon	MAGVAR	Range	Type	Source	Critical	Status	Time	Distance
1	EED	N34° 45' 57.62", W114° 28' 26.77"	15.0 E	130	H	IFPA	NO	Enabled	100 %	100 %
2	LAS	N36° 04' 46.93", W115° 09' 35.27"	15.0 E	130	H	IFPA	NO	Enabled	100 %	100 %
3	MMM	N36° 46' 09.31", W114° 16' 38.83"	16.0 E	40	L	IFPA	NO	Enabled	100 %	100 %
4	BLD	N35° 59' 44.84", W114° 51' 48.88"	15.0 E	130	H	IFPA	NO	Enabled	100 %	100 %

Flight Check DME Selection						
Distance [NM]	Selected DMEs					Alternate
0.0	MMM	LAS	EED	BLD		

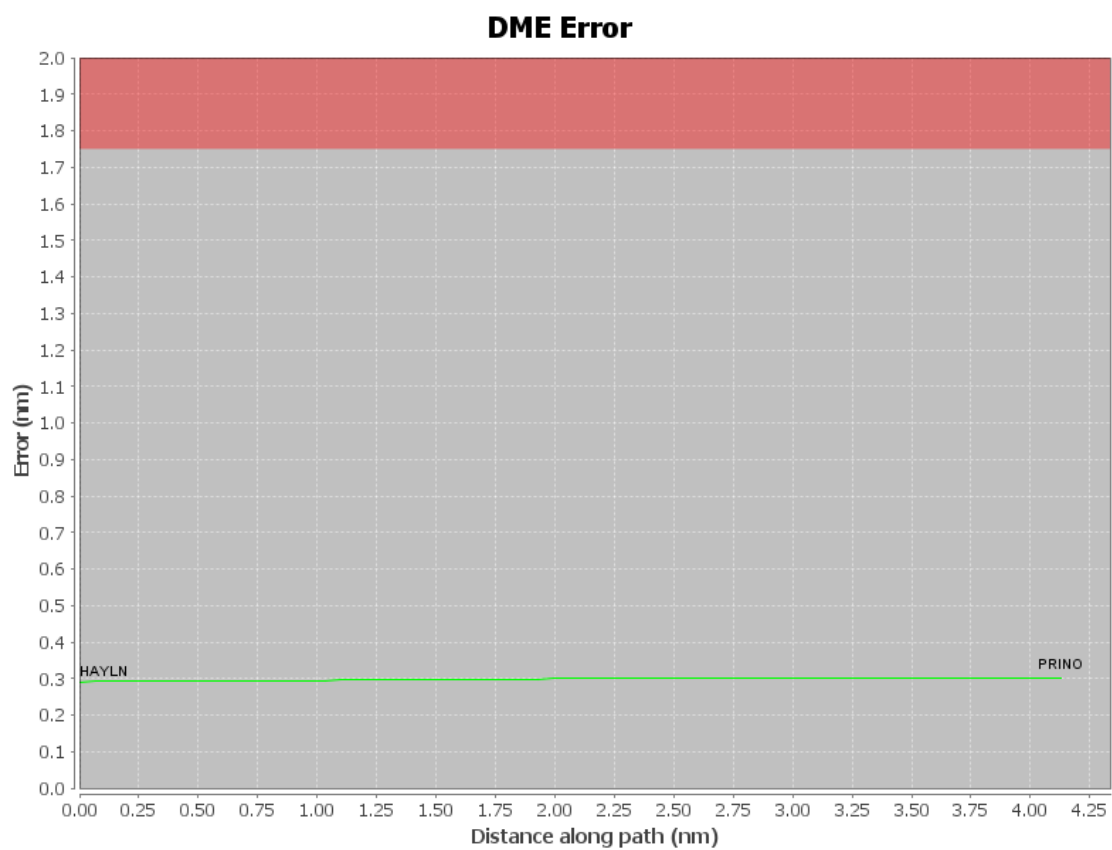
Inertial Drift Segments			
#	Start Location	End Location	Length [NM]

Available DMEs by Waypoints		
Waypoint Before	Waypoint After	DME List
HAYLN	PRINO	EED, BLD, MMM, LAS

DME DME Assessment Results for RKSTR1 path HAYLN_PRINO

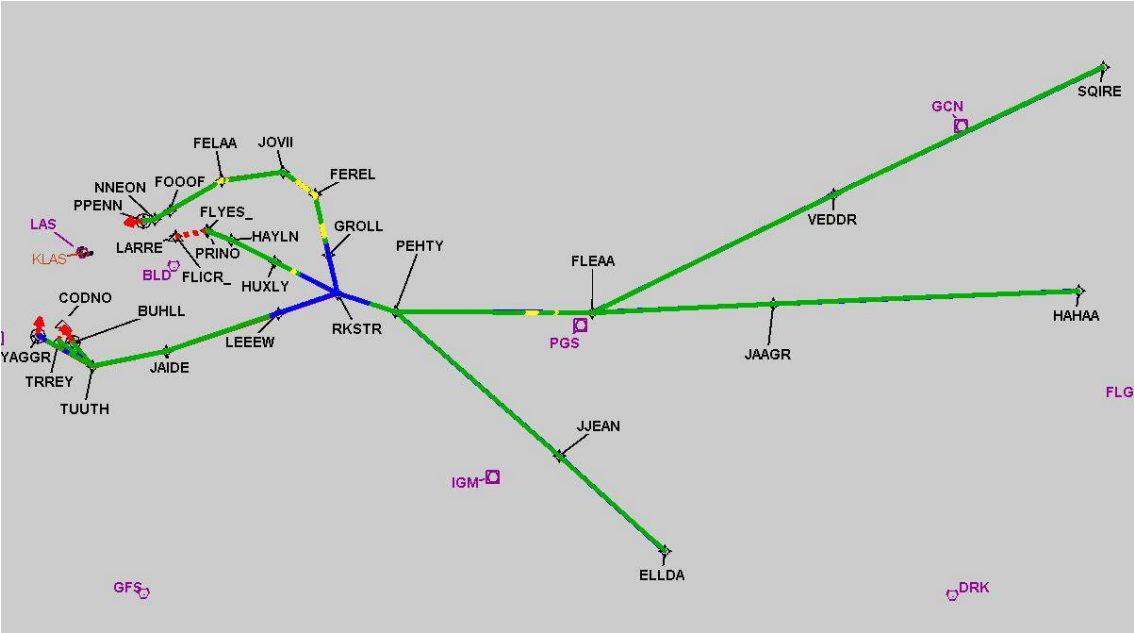
User Data Files								
#	File Name							
1	New Analysis.udt							
2	UserDMEsKLAS [IFPA] RKSTR1 RNAV STAR_20190906_1204 MST.udt							
User DMEs								
#	Name	Lat/Lon	MAGVAR	Range	Elevation [ft]	Frequency	Replaces	Status
1	UDT ESV EED EED [IFPA]	N34° 45' 57.62", W114° 28' 26.77"	15.0 E	130	689	115.2	UDT ESV EED	
ESV:		Bearing [True]: 348.0° to 3.0° Bearing [Mag]: 333.0° to 348.0°				Arc Distance: Out to 99.0 NM Altitude: 6600.0 to 12800.0 ft		
2	UDT ESV DRK DRK [IFPA]	N34° 42' 09.19", W112° 28' 49.23"	14.0 E	130	5003.3	114.1	UDT ESV DRK	
ESV:		Bearing [True]: 310.0° to 17.0° Bearing [Mag]: 296.0° to 3.0°				Arc Distance: Out to 95.0 NM Altitude: 11900.0 to 45000.0 ft		
3	UDT ESV PKE PKE [IFPA]	N34° 06' 07.10", W114° 40' 55.44"	15.0 E	130	1049.9	117.9	UDT ESV PKE	
ESV:		Bearing [True]: 282.0° to 4.0° Bearing [Mag]: 267.0° to 349.0°				Arc Distance: Out to 107.0 NM Altitude: 12900.0 to 13100.0 ft		
4	UDT ESV IGM IGM [IFPA]	N35° 15' 37.85", W113° 56' 02.69"	15.0 E	40	3428.5	108.8	UDT ESV IGM	
ESV:		Bearing [True]: 331.0° to 342.0° Bearing [Mag]: 316.0° to 327.0°				Arc Distance: Out to 66.0 NM Altitude: 8600.0 to 10100.0 ft		
5	UDT ESV MMM MMM [IFPA]	N36° 46' 09.31", W114° 16' 38.83"	16.0 E	40	2106.3	114.3	UDT ESV MMM	
ESV:		Bearing [True]: 190.0° to 209.0° Bearing [Mag]: 174.0° to 193.0°				Arc Distance: Out to 69.0 NM Altitude: 6600.0 to 13100.0 ft		
6	UDT ESV PGS PGS [IFPA]	N35° 37' 28.96", W113° 32' 40.08"	15.0 E	130	4760	112.0	UDT ESV PGS	
ESV:		Bearing [True]: 300.0° to 313.0° Bearing [Mag]: 285.0° to 298.0°				Arc Distance: Out to 60.0 NM Altitude: 8600.0 to 10100.0 ft		
7	UDT ESV LAS LAS [IFPA]	N36° 04' 46.93", W115° 09' 35.27"	15.0 E	130	2158.8	116.9	UDT ESV LAS	
ESV:		Bearing [True]: 96.0° to 132.0° Bearing [Mag]: 81.0° to 117.0°				Arc Distance: Out to 88.0 NM Altitude: 11900.0 to 45000.0 ft		

DME DME Assessment Results for RKSTR1 path HAYLN_PRINO

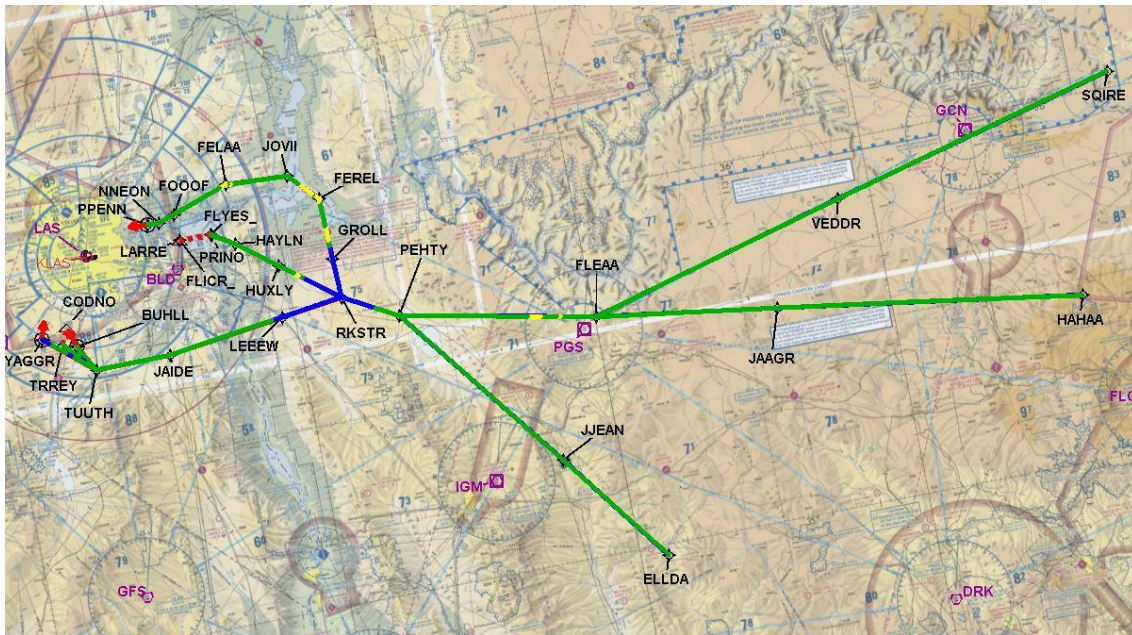


DME DME Assessment Results for RKSTR1 path HAYLN_PRINO

Graphic Depiction 1



Graphic Depiction 2



DME DME Assessment Results for RKSTR1 path RKSTR_BUHLL

Results Summary

Flyability:	Completed
DME/DME:	Completed - No Critical DMEs
Name:	Bob CTR Graham
Project File:	C:\Users\Bob CTR Graham\Desktop\AREA NAV Projects and TARGETS Files\LAS METROPLEX\KLAS FINAL PACKAGES\RKSTR\20200721_KLAS RKSTR.tgs
Output File:	C:\Users\Bob CTR Graham\Desktop\AREA NAV Projects and TARGETS Files\LAS METROPLEX\KLAS FINAL PACKAGES\RKSTR\New Forms FELAA 7-21-2020\KLAS [IFPA] RKSTR1 20200721_1854 MST\RKSTR_BUHLL\KLAS RKSTR1 RNAV STAR RKSTR BUHLL 20200721_1854 MST.pdf
Procedure Name:	RKSTR1
Software: DmeDmePlugin:	6.1.0
Date/Time:	07/21/2020 18:54 MST
Databases:	DTED Level o MAX

Failures

No Failures

Warnings

No Warnings

Notes For Flight Check

None

Flight Plan

Name	Type	Lat/Lon	Altitude (ft)	VNAV Mode	Ground Speed (kts)	Turn Type	Leg Type
RKSTR	WP	N35° 50' 18.66", W114° 20' 03.23"	14000	VNAV	280	FLY_BY	TF
LEEEW	WP	N35° 48' 57.56", W114° 32' 36.66"	14000	VNAV	250	FLY_BY	TF
JAIDE	WP	N35° 46' 18.84", W114° 56' 36.11"	8000	VNAV	250	FLY_BY	TF
TUUTH	WP	N35° 46' 15.97", W115° 11' 50.40"	8000	VNAV	220	FLY_BY	TF
BUHLL	WP	N35° 50' 35.23", W115° 14' 56.78"	7000	VNAV	210	FLY_OVER	TF

Flyability

Flight Type:	RNAV_STAR
Selected Airport:	KLAS [IFPA]
Climb Gradient:	None assigned
Speeds:	200 Ground Speed to 11000 FT
	240 Ground Speed to 18000 FT
	260 Ground Speed to 24000 FT
	340 Ground Speed above 24000 FT
Descent During a Turn:	Allowed
VNAV Mode:	Flight Plan

DME DME Assessment Results for RKSTR1 path RKSTR_BUHLL

DME/DME	
RNP:	RNP 2
Flight Mode:	Manual
Line of Sight (DTED Level 0 Max):	Evaluated
Inertial Drift:	Enabled
Initial Drift:	0.558 NM
INS Drift Rate:	8.0 NM/Hour
Range Mode:	OSV
RNP Edges:	Evaluated
Min DME Range:	3.0 NM
DME Types:	DME, VOR-DME, VORTAC
DME Include Angles:	30 to 150
Critical DMEs:	Allowed
DoD Facilities:	Not included
Foreign Facilities:	Not included
High DMEs:	Included
Low DMEs:	Included
Terminal DMEs:	Included
Flight Check DMEs:	Not selected
Higher Altitudes:	Not Evaluated
Near Maximum Altitude:	Not Evaluated
Automatic ESVs:	Not enabled
Disabled DMEs:	None

DME/DME (Continued)										
DMEs Used										
#	Name	Lat/Lon	MAGVAR	Range	Type	Source	Critical	Status	Time	Distance
1	LAS	N36° 04' 46.93", W115° 09' 35.27"	15.0 E	130	H	IFPA	NO	Enabled	53.4 %	52 %
2	EED	N34° 45' 57.62", W114° 28' 26.77"	15.0 E	130	H	IFPA	NO	Enabled	14.9 %	14.8 %
3	GOG	N35° 53' 39.30", W115° 29' 45.90"	0.0 E	130	H	IFPA	NO	Enabled	62.9 %	60.9 %
4	MMM	N36° 46' 09.31", W114° 16' 38.83"	16.0 E	40	L	IFPA	NO	Enabled	27.8 %	27.5 %
5	BLD	N35° 59' 44.84", W114° 51' 48.88"	15.0 E	130	H	IFPA	NO	Enabled	72.7 %	71.1 %
6	PKE	N34° 06' 07.10", W114° 40' 55.44"	15.0 E	130	H	IFPA	NO	Enabled	0.7 %	0.7 %

Flight Check DME Selection						
Distance [NM]	Selected DMEs					Alternate
0.0						
12.1	MMM	LAS	BLD	PKE		
12.5	MMM	LAS	BLD			
12.7	MMM	LAS	BLD	EED		
18.6	MMM	GOG	LAS	EED	BLD	
19.8	MMM	GOG	LAS	BLD		
24.4	GOG	BLD	LAS			
25.0	MMM	GOG	BLD			
25.8	GOG	BLD				
30.0	GOG	BLD	LAS			
38.7	GOG	BLD				
44.2	GOG	LAS	BLD			
44.4	GOG	LAS				
45.9	GOG	LAS	BLD			

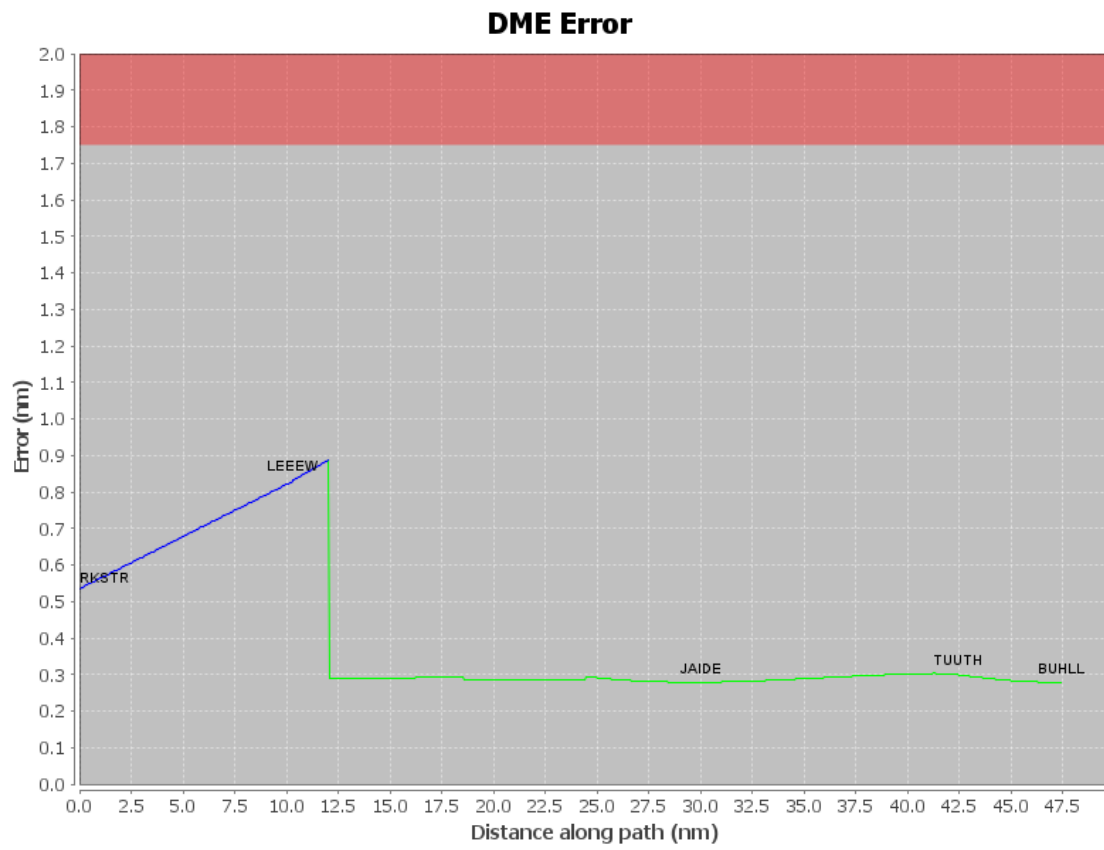
DME DME Assessment Results for RKSTR1 path RKSTR_BUHLL

Inertial Drift Segments			
#	Start Location	End Location	Length [NM]
1	N35° 50' 18.66", W114° 20' 03.23"	N35° 48' 43.23", W114° 34' 48.51"	12.0747

Available DMEs by Waypoints		
Waypoint Before	Waypoint After	DME List
RKSTR	LEEEW	
LEEEW	JAIDE	EED, PKE, BLD, MMM, GOG, LAS
JAIDE	TUUTH	BLD, GOG, LAS
TUUTH	BUHLL	BLD, GOG, LAS

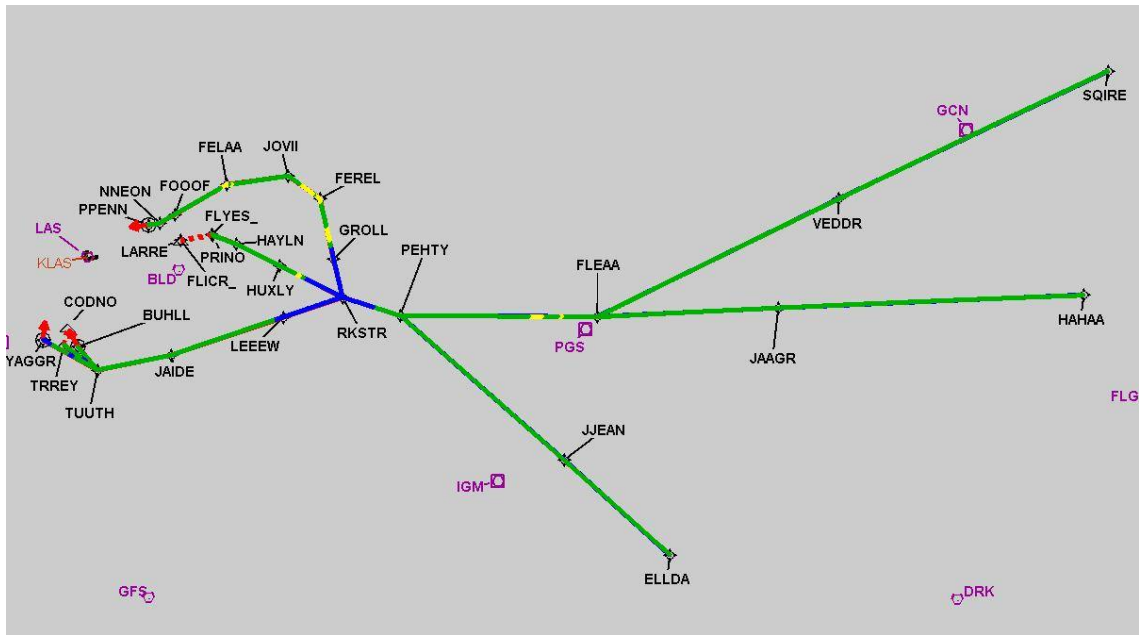
User Data Files								
#	File Name							
1	New Analysis.udt							
2	UserDMEsKLAS [IFPA] RKSTR1 RNAV STAR_20190906_1204 MST.udt							
User DMEs								
#	Name	Lat/Lon	MAGVAR	Range	Elevation [ft]	Frequency	Replaces	Status
1	UDT ESV EED EED [IFPA]	N34° 45' 57.62", W114° 28' 26.77"	15.0 E	130	689	115.2	UDT ESV EED	
ESV:		Bearing [True]: 348.0° to 3.0° Bearing [Mag]: 333.0° to 348.0°				Arc Distance: Out to 99.0 NM Altitude: 6600.0 to 12800.0 ft		
2	UDT ESV DRK DRK [IFPA]	N34° 42' 09.19", W112° 28' 49.23"	14.0 E	130	5003.3	114.1	UDT ESV DRK	
ESV:		Bearing [True]: 310.0° to 17.0° Bearing [Mag]: 296.0° to 3.0°				Arc Distance: Out to 95.0 NM Altitude: 11900.0 to 45000.0 ft		
3	UDT ESV PKE PKE [IFPA]	N34° 06' 07.10", W114° 40' 55.44"	15.0 E	130	1049.9	117.9	UDT ESV PKE	
ESV:		Bearing [True]: 282.0° to 4.0° Bearing [Mag]: 267.0° to 349.0°				Arc Distance: Out to 107.0 NM Altitude: 12900.0 to 13100.0 ft		
4	UDT ESV IGM IGM [IFPA]	N35° 15' 37.85", W113° 56' 02.69"	15.0 E	40	3428.5	108.8	UDT ESV IGM	
ESV:		Bearing [True]: 331.0° to 342.0° Bearing [Mag]: 316.0° to 327.0°				Arc Distance: Out to 66.0 NM Altitude: 8600.0 to 10100.0 ft		
5	UDT ESV MMM MMM [IFPA]	N36° 46' 09.31", W114° 16' 38.83"	16.0 E	40	2106.3	114.3	UDT ESV MMM	
ESV:		Bearing [True]: 190.0° to 209.0° Bearing [Mag]: 174.0° to 193.0°				Arc Distance: Out to 69.0 NM Altitude: 6600.0 to 13100.0 ft		
6	UDT ESV PGS PGS [IFPA]	N35° 37' 28.96", W113° 32' 40.08"	15.0 E	130	4760	112.0	UDT ESV PGS	
ESV:		Bearing [True]: 300.0° to 313.0° Bearing [Mag]: 285.0° to 298.0°				Arc Distance: Out to 60.0 NM Altitude: 8600.0 to 10100.0 ft		
7	UDT ESV LAS LAS [IFPA]	N36° 04' 46.93", W115° 09' 35.27"	15.0 E	130	2158.8	116.9	UDT ESV LAS	
ESV:		Bearing [True]: 96.0° to 132.0° Bearing [Mag]: 81.0° to 117.0°				Arc Distance: Out to 88.0 NM Altitude: 11900.0 to 45000.0 ft		

DME DME Assessment Results for RKSTR1 path RKSTR_BUHLL



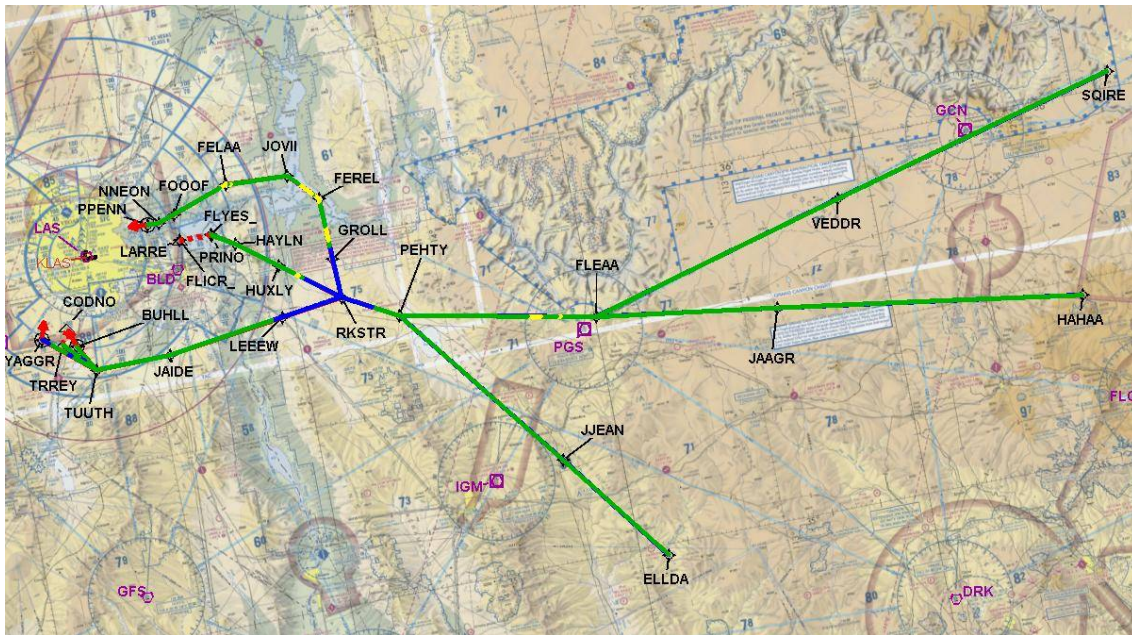
DME DME Assessment Results for RKSTR1 path RKSTR_BUHLL

Graphic Depiction 1



DME DME Assessment Results for RKSTR1 path RKSTR_BUHLL

Graphic Depiction 2



DME DME Assessment Results for RKSTR1 path RKSTR_FLYES_

Results Summary

Flyability:	Completed
DME/DME:	Completed - No Critical DMEs
Name:	Bob CTR Graham
Project File:	C:\Users\Bob CTR Graham\Desktop\AREA NAV Projects and TARGETS Files\LAS METROPLEX\KLAS FINAL PACKAGES\RKSTR\20200721_KLAS RKSTR.tgs
Output File:	C:\Users\Bob CTR Graham\Desktop\AREA NAV Projects and TARGETS Files\LAS METROPLEX\KLAS FINAL PACKAGES\RKSTR\New Forms FELAA 7-21-2020\KLAS [IFPA] RKSTR1 20200721_1854 MST\RKSTR_FLYES_KLAS RKSTR1 RNAV STAR RKSTR FLYES 20200721_1854 MST.pdf
Procedure Name:	RKSTR1
Software: DmeDmePlugin:	6.1.0
Date/Time:	07/21/2020 18:54 MST
Databases:	DTED Level o MAX

Failures

No Failures

Warnings

No Warnings

Notes For Flight Check

None

Flight Plan

Name	Type	Lat/Lon	Altitude (ft)	VNAV Mode	Ground Speed (kts)	Turn Type	Leg Type
RKSTR	WP	N35° 50' 18.66", W114° 20' 03.23"	14000	VNAV	280	FLY_BY	TF
HUXLY	WP	N35° 57' 25.02", W114° 31' 26.48"	10000	VNAV	250	FLY_BY	TF
HAYLN	WP	N36° 02' 15.12", W114° 39' 17.57"	8000	VNAV	250	FLY_BY	TF
FLYES_	WP	N36° 04' 33.54", W114° 43' 44.83"	8000	VNAV	210	FLY_BY	TF

Flyability

Flight Type:	RNAV_STAR
Selected Airport:	KLAS [IFPA]
Climb Gradient:	None assigned
Speeds:	200 Ground Speed to 11000 FT
	240 Ground Speed to 18000 FT
	260 Ground Speed to 24000 FT
	340 Ground Speed above 24000 FT
Descent During a Turn:	Allowed
VNAV Mode:	Flight Plan

DME DME Assessment Results for RKSTR1 path RKSTR_FLYES_

DME/DME	
RNP:	RNP 2
Flight Mode:	Manual
Line of Sight (DTED Level 0 Max):	Evaluated
Inertial Drift:	Enabled
Initial Drift:	0.558 NM
INS Drift Rate:	8.0 NM/Hour
Range Mode:	OSV
RNP Edges:	Evaluated
Min DME Range:	3.0 NM
DME Types:	DME, VOR-DME, VORTAC
DME Include Angles:	30 to 150
Critical DMEs:	Allowed
DoD Facilities:	Not included
Foreign Facilities:	Not included
High DMEs:	Included
Low DMEs:	Included
Terminal DMEs:	Included
Flight Check DMEs:	Not selected
Higher Altitudes:	Not Evaluated
Near Maximum Altitude:	Not Evaluated
Automatic ESVs:	Not enabled
Disabled DMEs:	None

DME/DME (Continued)										
DMEs Used										
#	Name	Lat/Lon	MAGVAR	Range	Type	Source	Critical	Status	Time	Distance
1	EED	N34° 45' 57.62", W114° 28' 26.77"	15.0 E	130	H	IFPA	NO	Enabled	70.3 %	68.8 %
2	LAS	N36° 04' 46.93", W115° 09' 35.27"	15.0 E	130	H	IFPA	NO	Enabled	72.5 %	70.8 %
3	MMM	N36° 46' 09.31", W114° 16' 38.83"	16.0 E	40	L	IFPA	NO	Enabled	63.9 %	61.7 %
4	BLD	N35° 59' 44.84", W114° 51' 48.88"	15.0 E	130	H	IFPA	NO	Enabled	72.5 %	70.8 %

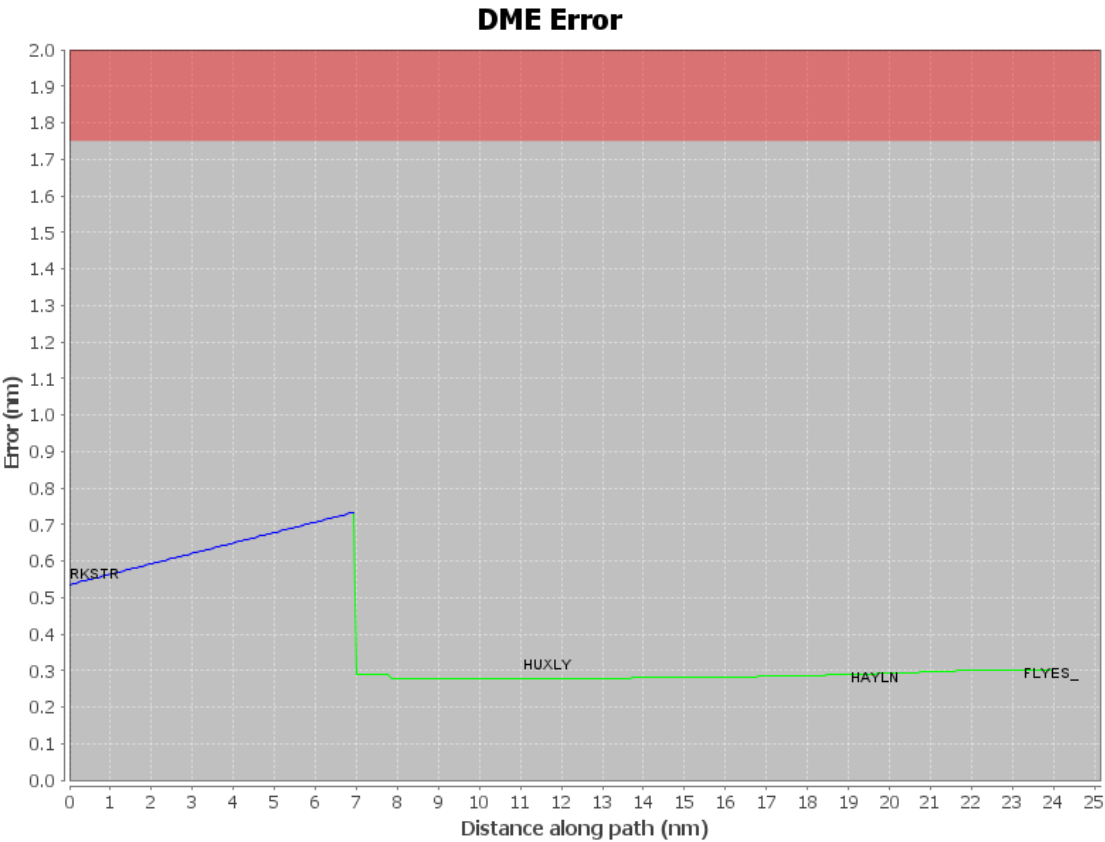
Flight Check DME Selection						
Distance [NM]	Selected DMEs					Alternate
0.0						
7.0	EED	BLD	LAS			
7.9	MMM	BLD	LAS	EED		
8.7	EED	BLD	LAS			
9.9	MMM	BLD	LAS	EED		
15.6	MMM	LAS	BLD			
16.0	MMM	LAS	EED	BLD		

Inertial Drift Segments			
#	Start Location	End Location	Length [NM]
1	N35° 50' 18.66", W114° 20' 03.23"	N35° 54' 34.61", W114° 26' 52.94"	6.9957

Available DMEs by Waypoints		
Waypoint Before	Waypoint After	DME List
RKSTR	HUXLY	EED, BLD, MMM, LAS
HUXLY	HAYLN	EED, BLD, MMM, LAS
HAYLN	FLYES_	EED, BLD, MMM, LAS

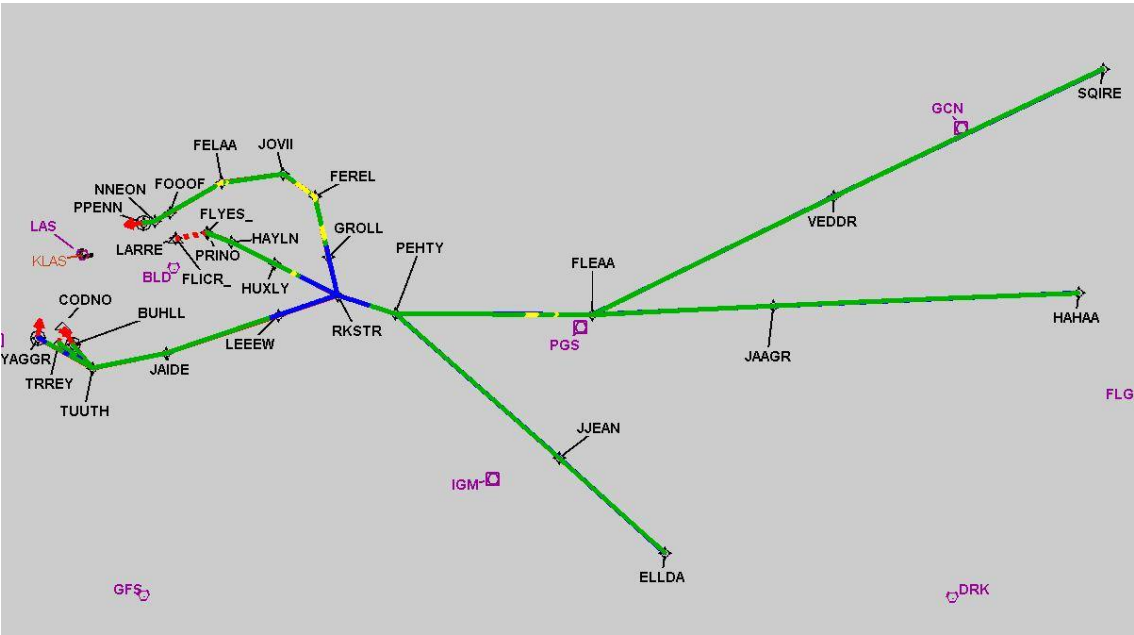
DME DME Assessment Results for RKSTR1 path RKSTR_FLYES_

User Data Files								
#	File Name							
1	New Analysis.udt							
2	UserDMEsKLAS [IFPA] RKSTR1 RNAV STAR_20190906_1204 MST.udt							
User DMEs								
#	Name	Lat/Lon	MAGVAR	Range	Elevation [ft]	Frequency	Replaces	Status
1	UDT ESV EED EED [IFPA]	N34° 45' 57.62", W114° 28' 26.77"	15.0 E	130	689	115.2	UDT ESV EED	
ESV:		Bearing [True]: 348.0° to 3.0° Bearing [Mag]: 333.0° to 348.0°				Arc Distance: Out to 99.0 NM Altitude: 6600.0 to 12800.0 ft		
2	UDT ESV DRK DRK [IFPA]	N34° 42' 09.19", W112° 28' 49.23"	14.0 E	130	5003.3	114.1	UDT ESV DRK	
ESV:		Bearing [True]: 310.0° to 17.0° Bearing [Mag]: 296.0° to 3.0°				Arc Distance: Out to 95.0 NM Altitude: 11900.0 to 45000.0 ft		
3	UDT ESV PKE PKE [IFPA]	N34° 06' 07.10", W114° 40' 55.44"	15.0 E	130	1049.9	117.9	UDT ESV PKE	
ESV:		Bearing [True]: 282.0° to 4.0° Bearing [Mag]: 267.0° to 349.0°				Arc Distance: Out to 107.0 NM Altitude: 12900.0 to 13100.0 ft		
4	UDT ESV IGM IGM [IFPA]	N35° 15' 37.85", W113° 56' 02.69"	15.0 E	40	3428.5	108.8	UDT ESV IGM	
ESV:		Bearing [True]: 331.0° to 342.0° Bearing [Mag]: 316.0° to 327.0°				Arc Distance: Out to 66.0 NM Altitude: 8600.0 to 10100.0 ft		
5	UDT ESV MMM MMM [IFPA]	N36° 46' 09.31", W114° 16' 38.83"	16.0 E	40	2106.3	114.3	UDT ESV MMM	
ESV:		Bearing [True]: 190.0° to 209.0° Bearing [Mag]: 174.0° to 193.0°				Arc Distance: Out to 69.0 NM Altitude: 6600.0 to 13100.0 ft		
6	UDT ESV PGS PGS [IFPA]	N35° 37' 28.96", W113° 32' 40.08"	15.0 E	130	4760	112.0	UDT ESV PGS	
ESV:		Bearing [True]: 300.0° to 313.0° Bearing [Mag]: 285.0° to 298.0°				Arc Distance: Out to 60.0 NM Altitude: 8600.0 to 10100.0 ft		
7	UDT ESV LAS LAS [IFPA]	N36° 04' 46.93", W115° 09' 35.27"	15.0 E	130	2158.8	116.9	UDT ESV LAS	
ESV:		Bearing [True]: 96.0° to 132.0° Bearing [Mag]: 81.0° to 117.0°				Arc Distance: Out to 88.0 NM Altitude: 11900.0 to 45000.0 ft		



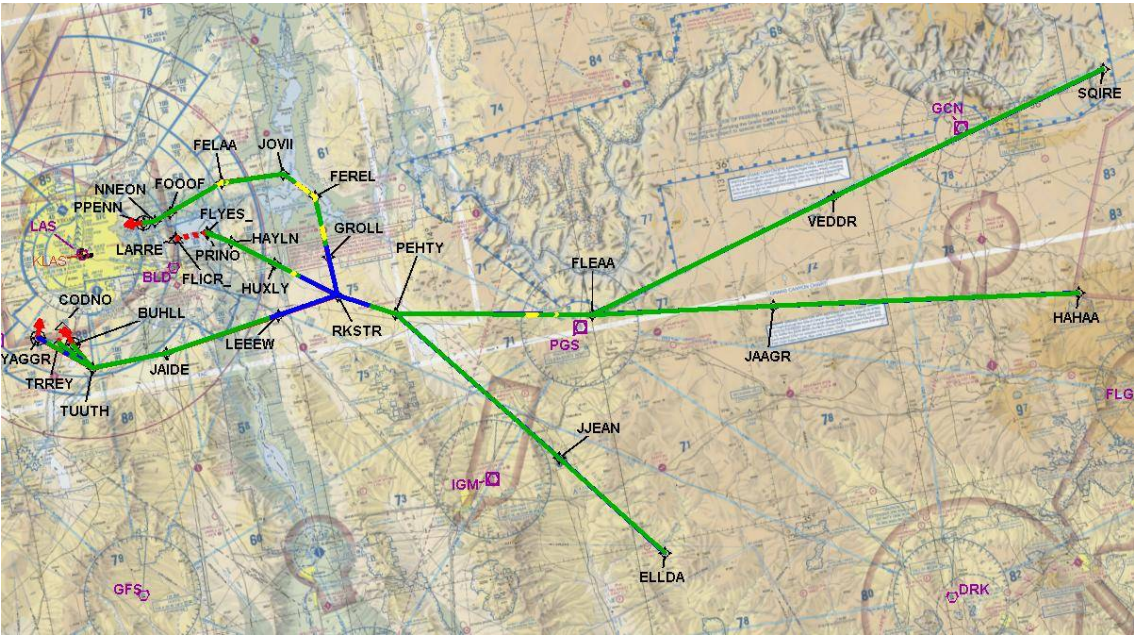
DME DME Assessment Results for RKSTR1 path RKSTR_FLYES_

Graphic Depiction 1



DME DME Assessment Results for RKSTR1 path RKSTR_FLYES_

Graphic Depiction 2



DME DME Assessment Results for RKSTR1 path SQIRE_FLEAA

Results Summary

Flyability:	Completed
DME/DME:	Completed - No Critical DMEs
Name:	Bob CTR Graham
Project File:	C:\Users\Bob CTR Graham\Desktop\AREA NAV Projects and TARGETS Files\LAS METROPLEX\KLAS FINAL PACKAGES\RKSTR\20200721_KLAS RKSTR.tgs
Output File:	C:\Users\Bob CTR Graham\Desktop\AREA NAV Projects and TARGETS Files\LAS METROPLEX\KLAS FINAL PACKAGES\RKSTR\New Forms FELAA 7-21-2020\KLAS [IFPA] RKSTR1 20200721_1854 MST\SQIRE_FLEAA\KLAS RKSTR1 RNAV STAR SQIRE FLEAA 20200721_1854 MST.pdf
Procedure Name:	RKSTR1
Software: DmeDmePlugin:	6.1.0
Date/Time:	07/21/2020 18:54 MST
Databases:	DTED Level o MAX

Failures

No Failures

Warnings

No Warnings

Notes For Flight Check

None

Flight Plan

Name	Type	Lat/Lon	Altitude (ft)	VNAV Mode	Ground Speed (kts)	Turn Type	Leg Type
SQIRE	WP	N36° 02' 47.78", W111° 38' 01.41"	24000	VNAV	280	FLY_BY	TF
VEDDR	WP	N35° 50' 33.69", W112° 36' 56.11"	24000	VNAV	280	FLY_BY	TF
FLEAA	WP	N35° 39' 07.31", W113° 29' 46.63"	22000	VNAV	280	FLY_BY	TF

Flyability

Flight Type:	RNAV_STAR
Selected Airport:	KLAS [IFPA]
Climb Gradient:	None assigned
Speeds:	200 Ground Speed to 11000 FT
	240 Ground Speed to 18000 FT
	260 Ground Speed to 24000 FT
	340 Ground Speed above 24000 FT
Descent During a Turn:	Allowed
VNAV Mode:	Flight Plan

DME DME Assessment Results for RKSTR1 path SQIRE_FLEAA

DME/DME	
RNP:	RNP 2
Flight Mode:	Manual
Line of Sight (DTED Level 0 Max):	Evaluated
Inertial Drift:	Enabled
Initial Drift:	0.558 NM
INS Drift Rate:	8.0 NM/Hour
Range Mode:	OSV
RNP Edges:	Evaluated
Min DME Range:	3.0 NM
DME Types:	DME, VOR-DME, VORTAC
DME Include Angles:	30 to 150
Critical DMEs:	Allowed
DoD Facilities:	Not included
Foreign Facilities:	Not included
High DMEs:	Included
Low DMEs:	Included
Terminal DMEs:	Included
Flight Check DMEs:	Not selected
Higher Altitudes:	Not Evaluated
Near Maximum Altitude:	Not Evaluated
Automatic ESVs:	Not enabled
Disabled DMEs:	None

DME/DME (Continued)										
DMEs Used										
#	Name	Lat/Lon	MAGVAR	Range	Type	Source	Critical	Status	Time	Distance
1	LAS	N36° 04' 46.93", W115° 09' 35.27"	15.0 E	130	H	IFPA	NO	Enabled	52.1 %	52.1 %
2	EED	N34° 45' 57.62", W114° 28' 26.77"	15.0 E	130	H	IFPA	NO	Enabled	28.1 %	28.1 %
3	INW	N35° 03' 41.76", W110° 47' 42.07"	14.0 E	130	H	IFPA	NO	Enabled	54.8 %	54.8 %
4	GCN	N35° 57' 37.23", W112° 08' 45.77"	15.0 E	40	L	IFPA	NO	Enabled	62.2 %	62.2 %
5	DRK	N34° 42' 09.19", W112° 28' 49.23"	14.0 E	130	H	IFPA	NO	Enabled	100 %	100 %
6	FLG	N35° 08' 49.97", W111° 40' 26.95"	14.0 E	130	H	IFPA	NO	Enabled	86.7 %	86.7 %
7	BLD	N35° 59' 44.84", W114° 51' 48.88"	15.0 E	130	H	IFPA	NO	Enabled	68.9 %	68.9 %
8	PGS	N35° 37' 28.96", W113° 32' 40.08"	15.0 E	130	H	IFPA	NO	Enabled	98 %	98 %
9	TBC	N36° 07' 16.72", W111° 16' 10.52"	15.0 E	130	H	IFPA	NO	Enabled	87.2 %	87.2 %
10	PKE	N34° 06' 07.10", W114° 40' 55.44"	15.0 E	130	H	IFPA	NO	Enabled	24.4 %	24.4 %

Flight Check DME Selection						
Distance [NM]	Selected DMEs					Alternate
0.0	TBC	INW	GCN	PGS	DRK	
21.5	FLG	TBC	PGS	DRK	INW	
51.5	PGS	DRK	GCN	TBC	FLG	BLD
65.3	PGS	DRK	TBC	BLD	FLG	LAS
81.9	PGS	DRK	EED	FLG	BLD	PKE
92.1	EED	DRK	BLD	LAS	FLG	PKE

Inertial Drift Segments			
#	Start Location	End Location	Length [NM]

DME DME Assessment Results for RKSTR1 path SQIRE_FLEAA

Available DMEs by Waypoints

Waypoint Before	Waypoint After	DME List
SQIRE	VEDDR	FLG, INW, GCN, TBC, BLD, DRK, PGS, LAS
VEDDR	FLEAA	FLG, GCN, INW, TBC, EED, BLD, PKE, DRK, PGS, LAS

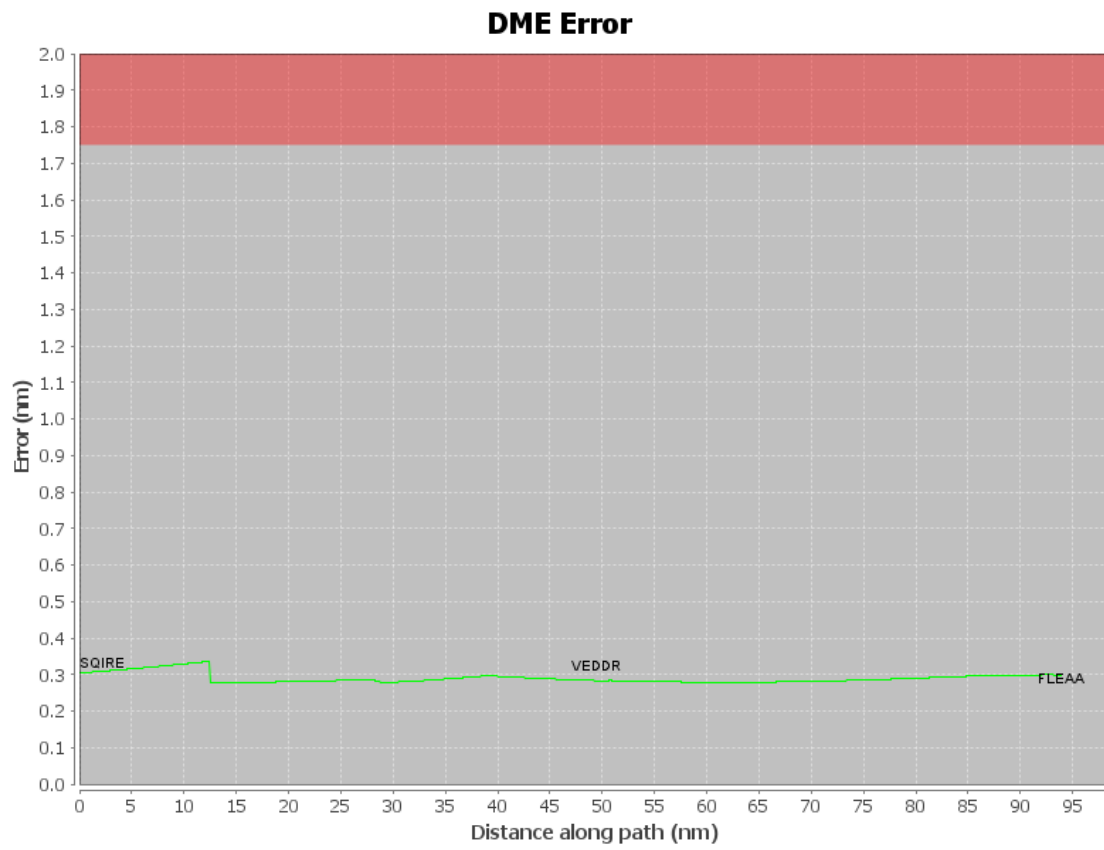
User Data Files

#	File Name
1	New Analysis.udt
2	UserDMEsKLAS [IFPA] RKSTR1 RNAV STAR_20190906_1204 MST.udt

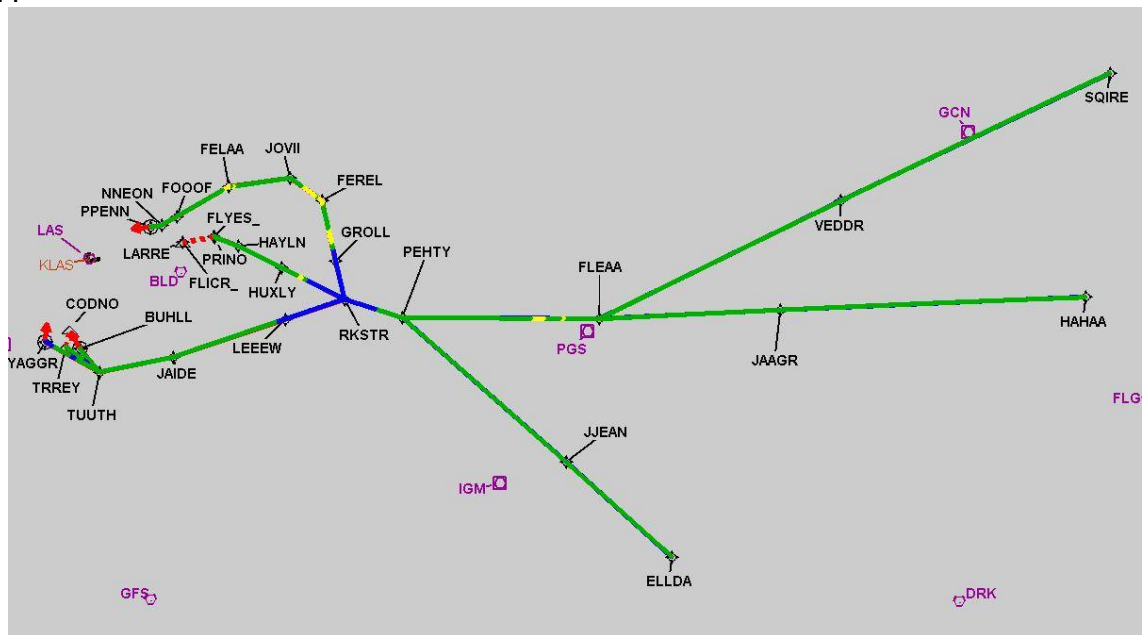
User DMEs

#	Name	Lat/Lon	MAGVAR	Range	Elevation [ft]	Frequency	Replaces	Status
1	UDT ESV EED EED [IFPA]	N34° 45' 57.62", W114° 28' 26.77"	15.0 E	130	689	115.2	UDT ESV EED	
ESV:		Bearing [True]: 348.0° to 3.0° Bearing [Mag]: 333.0° to 348.0°				Arc Distance: Out to 99.0 NM Altitude: 6600.0 to 12800.0 ft		
2	UDT ESV DRK DRK [IFPA]	N34° 42' 09.19", W112° 28' 49.23"	14.0 E	130	5003.3	114.1	UDT ESV DRK	
ESV:		Bearing [True]: 310.0° to 17.0° Bearing [Mag]: 296.0° to 3.0°				Arc Distance: Out to 95.0 NM Altitude: 11900.0 to 45000.0 ft		
3	UDT ESV PKE PKE [IFPA]	N34° 06' 07.10", W114° 40' 55.44"	15.0 E	130	1049.9	117.9	UDT ESV PKE	
ESV:		Bearing [True]: 282.0° to 4.0° Bearing [Mag]: 267.0° to 349.0°				Arc Distance: Out to 107.0 NM Altitude: 12900.0 to 13100.0 ft		
4	UDT ESV IGM IGM [IFPA]	N35° 15' 37.85", W113° 56' 02.69"	15.0 E	40	3428.5	108.8	UDT ESV IGM	
ESV:		Bearing [True]: 331.0° to 342.0° Bearing [Mag]: 316.0° to 327.0°				Arc Distance: Out to 66.0 NM Altitude: 8600.0 to 10100.0 ft		
5	UDT ESV MMM MMM [IFPA]	N36° 46' 09.31", W114° 16' 38.83"	16.0 E	40	2106.3	114.3	UDT ESV MMM	
ESV:		Bearing [True]: 190.0° to 209.0° Bearing [Mag]: 174.0° to 193.0°				Arc Distance: Out to 69.0 NM Altitude: 6600.0 to 13100.0 ft		
6	UDT ESV PGS PGS [IFPA]	N35° 37' 28.96", W113° 32' 40.08"	15.0 E	130	4760	112.0	UDT ESV PGS	
ESV:		Bearing [True]: 300.0° to 313.0° Bearing [Mag]: 285.0° to 298.0°				Arc Distance: Out to 60.0 NM Altitude: 8600.0 to 10100.0 ft		
7	UDT ESV LAS LAS [IFPA]	N36° 04' 46.93", W115° 09' 35.27"	15.0 E	130	2158.8	116.9	UDT ESV LAS	
ESV:		Bearing [True]: 96.0° to 132.0° Bearing [Mag]: 81.0° to 117.0°				Arc Distance: Out to 88.0 NM Altitude: 11900.0 to 45000.0 ft		

DME DME Assessment Results for RKSTR1 path SQIRE_FLEAA

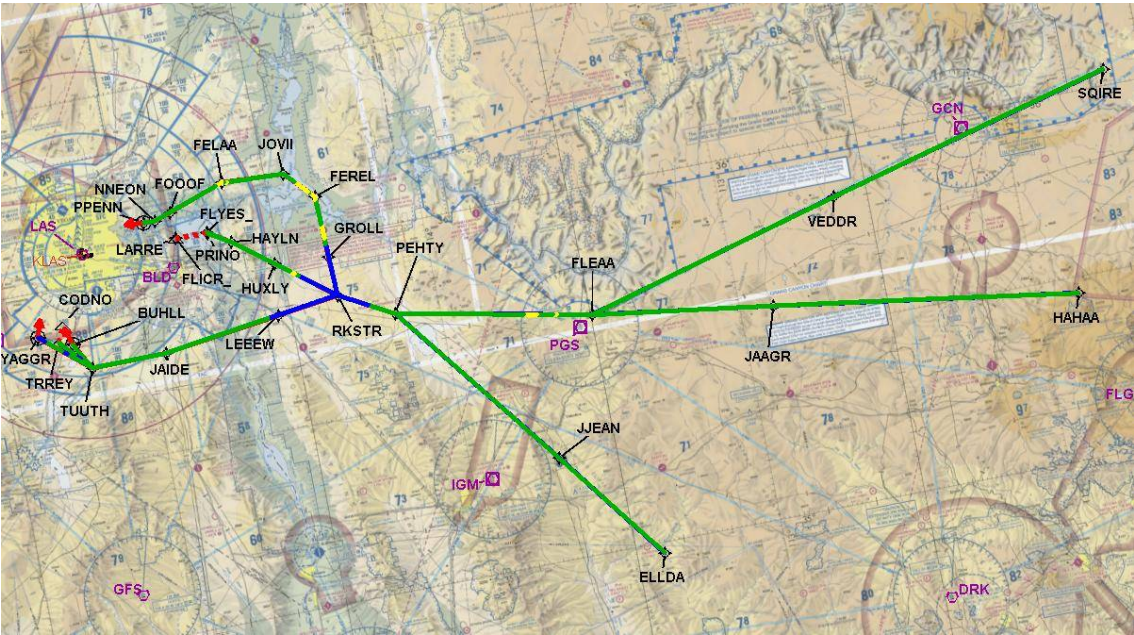


Graphic Depiction 1



DME DME Assessment Results for RKSTR1 path SQIRE_FLEAA

Graphic Depiction 2



DME DME Assessment Results for RKSTR1 path TUUTH_TRREY

Results Summary

Flyability:	Completed
DME/DME:	Completed - No Critical DMEs
Name:	Bob CTR Graham
Project File:	C:\Users\Bob CTR Graham\Desktop\AREA NAV Projects and TARGETS Files\LAS METROPLEX\KLAS FINAL PACKAGES\RKSTR\20200721_KLAS RKSTR.tgs
Output File:	C:\Users\Bob CTR Graham\Desktop\AREA NAV Projects and TARGETS Files\LAS METROPLEX\KLAS FINAL PACKAGES\RKSTR\New Forms FELAA 7-21-2020\KLAS [IFPA] RKSTR1 20200721_1854 MST\TUUTH_TRREY\KLAS RKSTR1 RNAV STAR TUUTH TRREY 20200721_1854 MST.pdf
Procedure Name:	RKSTR1
Software: DmeDmePlugin:	6.1.0
Date/Time:	07/21/2020 18:54 MST
Databases:	DTED Level o MAX

Failures

No Failures

Warnings

No Warnings

Notes For Flight Check

None

Flight Plan

Name	Type	Lat/Lon	Altitude (ft)	VNAV Mode	Ground Speed (kts)	Turn Type	Leg Type
TUUTH	WP	N35° 46' 15.97", W115° 11' 50.40"	8000	VNAV	220	FLY_BY	TF
TRREY	WP	N35° 51' 26.54", W115° 17' 40.79"	7000	VNAV	210	FLY_BY	TF

Flyability

Flight Type:	RNAV_STAR
Selected Airport:	KLAS [IFPA]
Climb Gradient:	None assigned
Speeds:	200 Ground Speed to 11000 FT
	240 Ground Speed to 18000 FT
	260 Ground Speed to 24000 FT
	340 Ground Speed above 24000 FT
Descent During a Turn:	Allowed
VNAV Mode:	Flight Plan

DME DME Assessment Results for RKSTR1 path TUUTH_TRREY

DME/DME	
RNP:	RNP 2
Flight Mode:	Manual
Line of Sight (DTED Level 0 Max):	Evaluated
Inertial Drift:	Enabled
Initial Drift:	0.558 NM
INS Drift Rate:	8.0 NM/Hour
Range Mode:	OSV
RNP Edges:	Evaluated
Min DME Range:	3.0 NM
DME Types:	DME, VOR-DME, VORTAC
DME Include Angles:	30 to 150
Critical DMEs:	Allowed
DoD Facilities:	Not included
Foreign Facilities:	Not included
High DMEs:	Included
Low DMEs:	Included
Terminal DMEs:	Included
Flight Check DMEs:	Not selected
Higher Altitudes:	Not Evaluated
Near Maximum Altitude:	Not Evaluated
Automatic ESVs:	Not enabled
Disabled DMEs:	None

DME/DME (Continued)										
DMEs Used										
#	Name	Lat/Lon	MAGVAR	Range	Type	Source	Critical	Status	Time	Distance
1	GOG	N35° 53' 39.30", W115° 29' 45.90"	0.0 E	130	H	IFPA	NO	Enabled	83.5 %	83.5 %
2	LAS	N36° 04' 46.93", W115° 09' 35.27"	15.0 E	130	H	IFPA	NO	Enabled	51.3 %	51.3 %
3	BLD	N35° 59' 44.84", W114° 51' 48.88"	15.0 E	130	H	IFPA	NO	Enabled	67.8 %	67.8 %

Flight Check DME Selection						
Distance [NM]	Selected DMEs					Alternate
0.0	GOG	BLD				
2.3						
3.4	GOG	LAS				
4.5	GOG	LAS	BLD			

Inertial Drift Segments			
#	Start Location	End Location	Length [NM]
1	N35° 47' 58.62", W115° 13' 46.10"	N35° 48' 47.24", W115° 14' 40.93"	1.0987

Available DMEs by Waypoints		
Waypoint Before	Waypoint After	DME List
TUUTH	TRREY	BLD, GOG, LAS

DME DME Assessment Results for RKSTR1 path TUUTH_TRREY

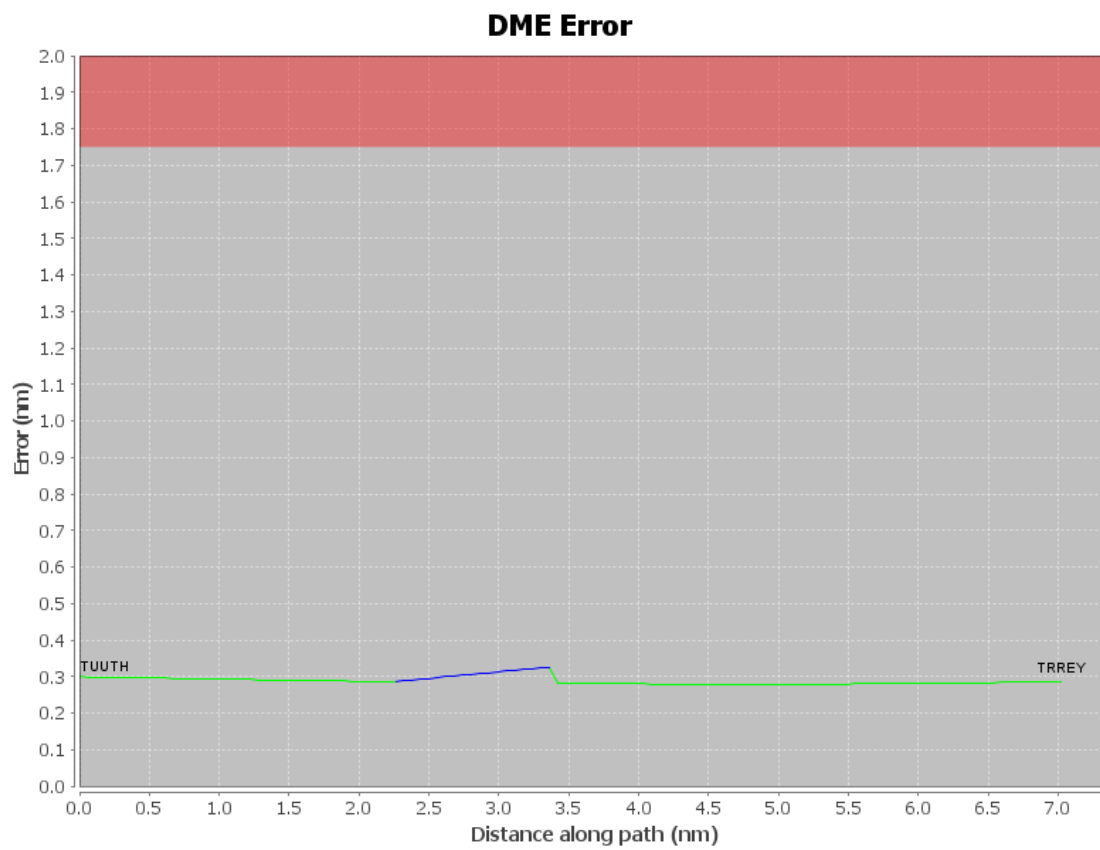
User Data Files

#	File Name
1	New Analysis.udt
2	UserDMESKLAS [IFPA] RKSTR1 RNAV STAR_20190906_1204 MST.udt

User DMEs

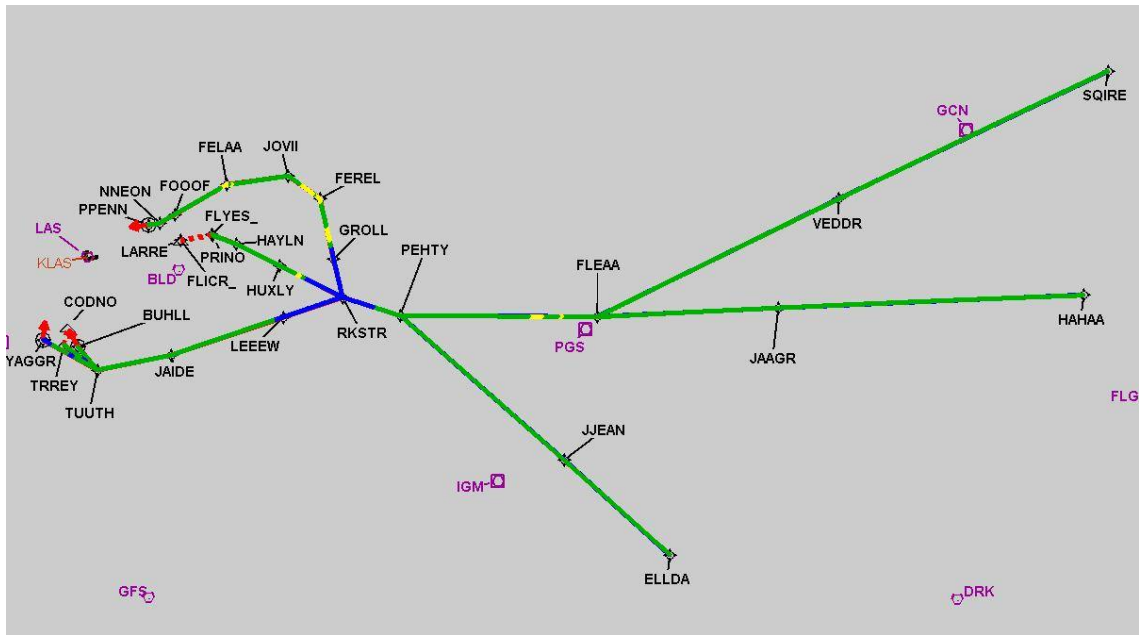
#	Name	Lat/Lon	MAGVAR	Range	Elevation [ft]	Frequency	Replaces	Status
1	UDT ESV EED EED [IFPA]	N34° 45' 57.62", W114° 28' 26.77"	15.0 E	130	689	115.2	UDT ESV EED	
ESV:		Bearing [True]: 348.0° to 3.0° Bearing [Mag]: 333.0° to 348.0°				Arc Distance: Out to 99.0 NM Altitude: 6600.0 to 12800.0 ft		
2	UDT ESV DRK DRK [IFPA]	N34° 42' 09.19", W112° 28' 49.23"	14.0 E	130	5003.3	114.1	UDT ESV DRK	
ESV:		Bearing [True]: 310.0° to 17.0° Bearing [Mag]: 296.0° to 3.0°				Arc Distance: Out to 95.0 NM Altitude: 11900.0 to 45000.0 ft		
3	UDT ESV PKE PKE [IFPA]	N34° 06' 07.10", W114° 40' 55.44"	15.0 E	130	1049.9	117.9	UDT ESV PKE	
ESV:		Bearing [True]: 282.0° to 4.0° Bearing [Mag]: 267.0° to 349.0°				Arc Distance: Out to 107.0 NM Altitude: 12900.0 to 13100.0 ft		
4	UDT ESV IGM IGM [IFPA]	N35° 15' 37.85", W113° 56' 02.69"	15.0 E	40	3428.5	108.8	UDT ESV IGM	
ESV:		Bearing [True]: 331.0° to 342.0° Bearing [Mag]: 316.0° to 327.0°				Arc Distance: Out to 66.0 NM Altitude: 8600.0 to 10100.0 ft		
5	UDT ESV MMM MMM [IFPA]	N36° 46' 09.31", W114° 16' 38.83"	16.0 E	40	2106.3	114.3	UDT ESV MMM	
ESV:		Bearing [True]: 190.0° to 209.0° Bearing [Mag]: 174.0° to 193.0°				Arc Distance: Out to 69.0 NM Altitude: 6600.0 to 13100.0 ft		
6	UDT ESV PGS PGS [IFPA]	N35° 37' 28.96", W113° 32' 40.08"	15.0 E	130	4760	112.0	UDT ESV PGS	
ESV:		Bearing [True]: 300.0° to 313.0° Bearing [Mag]: 285.0° to 298.0°				Arc Distance: Out to 60.0 NM Altitude: 8600.0 to 10100.0 ft		
7	UDT ESV LAS LAS [IFPA]	N36° 04' 46.93", W115° 09' 35.27"	15.0 E	130	2158.8	116.9	UDT ESV LAS	
ESV:		Bearing [True]: 96.0° to 132.0° Bearing [Mag]: 81.0° to 117.0°				Arc Distance: Out to 88.0 NM Altitude: 11900.0 to 45000.0 ft		

DME DME Assessment Results for RKSTR1 path TUUTH_TRREY



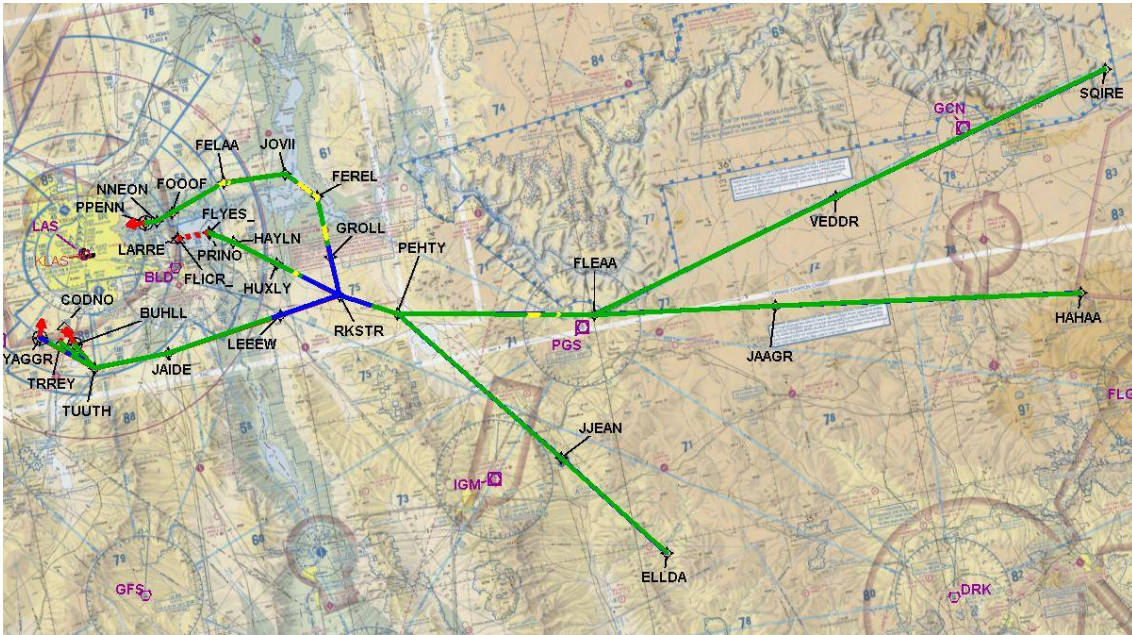
DME DME Assessment Results for RKSTR1 path TUUTH_TRREY

Graphic Depiction 1



DME DME Assessment Results for RKSTR1 path TUUTH_TRREY

Graphic Depiction 2



DME DME Assessment Results for RKSTR1 path TUUTH_YAGGR

Results Summary

Flyability:	Completed
DME/DME:	Completed - No Critical DMEs
Name:	Bob CTR Graham
Project File:	C:\Users\Bob CTR Graham\Desktop\AREA NAV Projects and TARGETS Files\LAS METROPLEX\KLAS FINAL PACKAGES\RKSTR\20200721_KLAS RKSTR.tgs
Output File:	C:\Users\Bob CTR Graham\Desktop\AREA NAV Projects and TARGETS Files\LAS METROPLEX\KLAS FINAL PACKAGES\RKSTR\New Forms FELAA 7-21-2020\KLAS [IFPA] RKSTR1 20200721_1854 MST\TUUTH_YAGGR\KLAS RKSTR1 RNAV STAR TUUTH YAGGR 20200721_1854 MST.pdf
Procedure Name:	RKSTR1
Software: DmeDmePlugin:	6.1.0
Date/Time:	07/21/2020 18:54 MST
Databases:	DTED Level o MAX

Failures

No Failures

Warnings

No Warnings

Notes For Flight Check

None

Flight Plan

Name	Type	Lat/Lon	Altitude (ft)	VNAV Mode	Ground Speed (kts)	Turn Type	Leg Type
TUUTH	WP	N35° 46' 15.97", W115° 11' 50.40"	8000	VNAV	220	FLY_BY	TF
YAGGR	WP	N35° 52' 48.54", W115° 21' 31.70"	8000	VNAV	210	FLY_OVER	TF

Flyability

Flight Type:	RNAV_STAR
Selected Airport:	KLAS [IFPA]
Climb Gradient:	None assigned
Speeds:	200 Ground Speed to 11000 FT
	240 Ground Speed to 18000 FT
	260 Ground Speed to 24000 FT
	340 Ground Speed above 24000 FT
Descent During a Turn:	Allowed
VNAV Mode:	Flight Plan

DME DME Assessment Results for RKSTR1 path TUUTH_YAGGR

DME/DME	
RNP:	RNP 2
Flight Mode:	Manual
Line of Sight (DTED Level 0 Max):	Evaluated
Inertial Drift:	Enabled
Initial Drift:	0.558 NM
INS Drift Rate:	8.0 NM/Hour
Range Mode:	OSV
RNP Edges:	Evaluated
Min DME Range:	3.0 NM
DME Types:	DME, VOR-DME, VORTAC
DME Include Angles:	30 to 150
Critical DMEs:	Allowed
DoD Facilities:	Not included
Foreign Facilities:	Not included
High DMEs:	Included
Low DMEs:	Included
Terminal DMEs:	Included
Flight Check DMEs:	Not selected
Higher Altitudes:	Not Evaluated
Near Maximum Altitude:	Not Evaluated
Automatic ESVs:	Not enabled
Disabled DMEs:	None

DME/DME (Continued)										
DMEs Used										
#	Name	Lat/Lon	MAGVAR	Range	Type	Source	Critical	Status	Time	Distance
1	GOG	N35° 53' 39.30", W115° 29' 45.90"	0.0 E	130	H	IFPA	NO	Enabled	75 %	75 %
2	LAS	N36° 04' 46.93", W115° 09' 35.27"	15.0 E	130	H	IFPA	NO	Enabled	31.5 %	31.5 %
3	BLD	N35° 59' 44.84", W114° 51' 48.88"	15.0 E	130	H	IFPA	NO	Enabled	75 %	75 %

Flight Check DME Selection						
Distance [NM]	Selected DMEs					Alternate
0.0	GOG	BLD				
4.5						
5.6	GOG	LAS	BLD			
8.9						

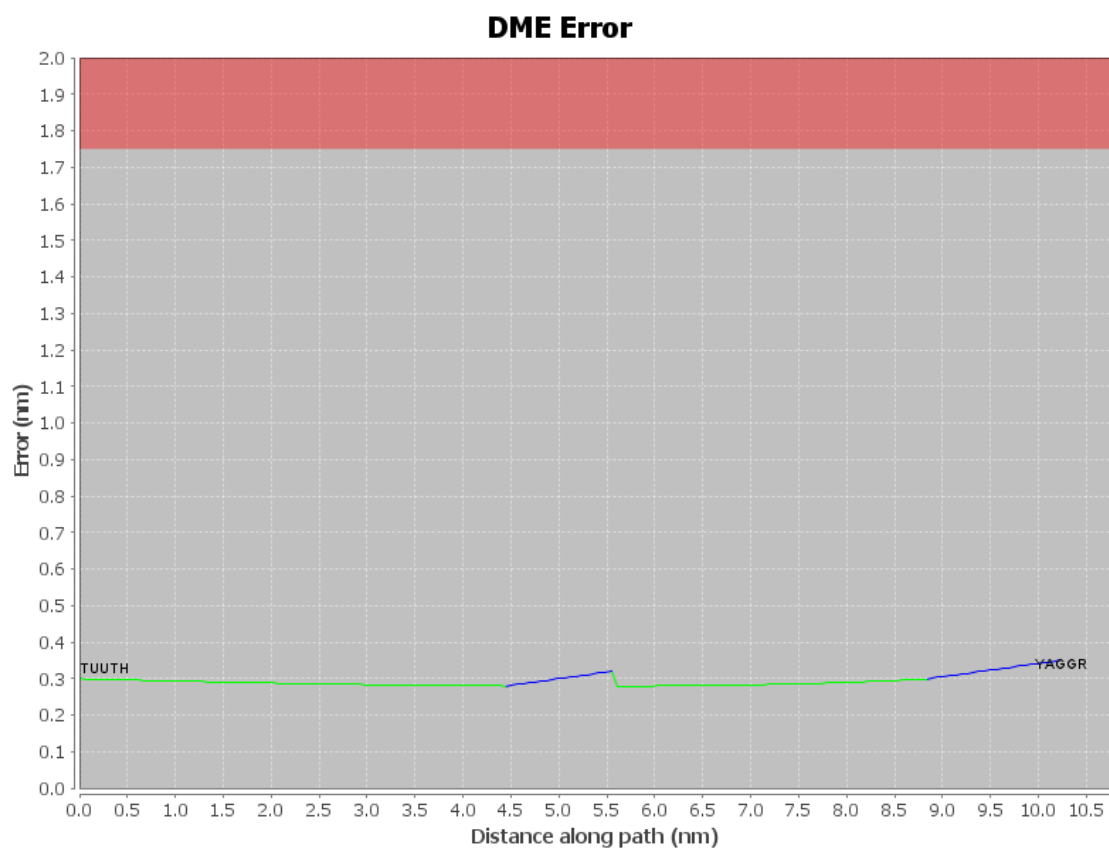
Inertial Drift Segments			
#	Start Location	End Location	Length [NM]
1	N35° 49' 08.98", W115° 16' 06.25"	N35° 49' 51.04", W115° 17' 08.53"	1.0966
2	N35° 51' 57.18", W115° 20' 15.49"	N35° 52' 48.54", W115° 21' 31.70"	1.3403

Available DMEs by Waypoints		
Waypoint Before	Waypoint After	DME List
TUUTH	YAGGR	BLD, GOG, LAS

DME DME Assessment Results for RKSTR1 path TUUTH_YAGGR

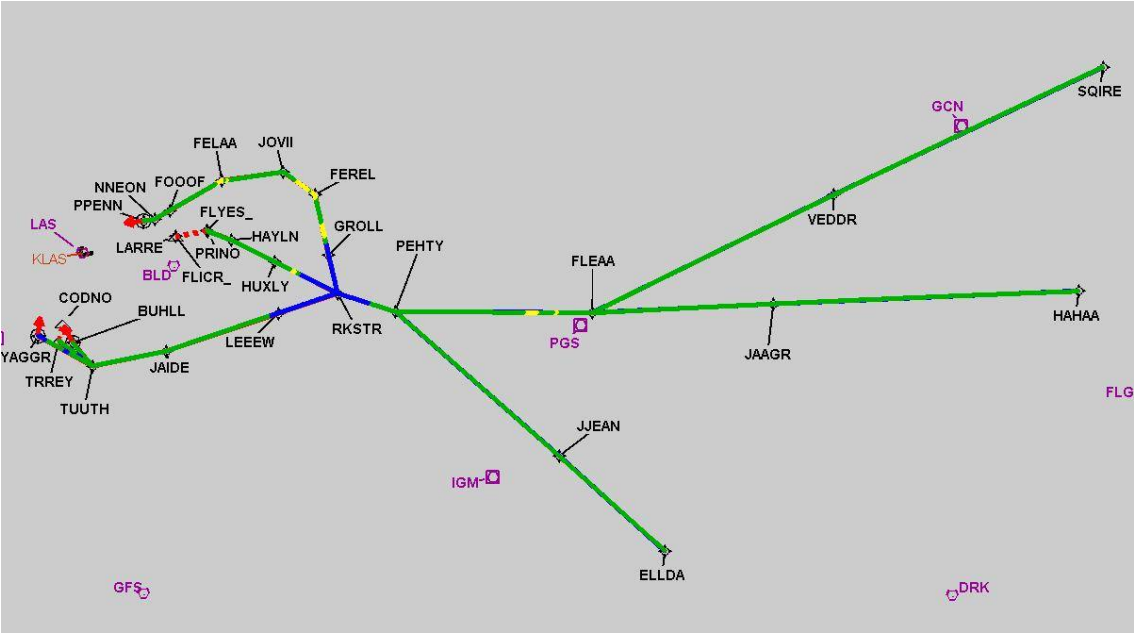
User Data Files								
#	File Name							
1	New Analysis.udt							
2	UserDMESKLAS [IFPA] RKSTR1 RNAV STAR_20190906_1204 MST.udt							
User DMEs								
#	Name	Lat/Lon	MAGVAR	Range	Elevation [ft]	Frequency	Replaces	Status
1	UDT ESV EED EED [IFPA]	N34° 45' 57.62", W114° 28' 26.77"	15.0 E	130	689	115.2	UDT ESV EED	
ESV:		Bearing [True]: 348.0° to 3.0° Bearing [Mag]: 333.0° to 348.0°				Arc Distance: Out to 99.0 NM Altitude: 6600.0 to 12800.0 ft		
2	UDT ESV DRK DRK [IFPA]	N34° 42' 09.19", W112° 28' 49.23"	14.0 E	130	5003.3	114.1	UDT ESV DRK	
ESV:		Bearing [True]: 310.0° to 17.0° Bearing [Mag]: 296.0° to 3.0°				Arc Distance: Out to 95.0 NM Altitude: 11900.0 to 45000.0 ft		
3	UDT ESV PKE PKE [IFPA]	N34° 06' 07.10", W114° 40' 55.44"	15.0 E	130	1049.9	117.9	UDT ESV PKE	
ESV:		Bearing [True]: 282.0° to 4.0° Bearing [Mag]: 267.0° to 349.0°				Arc Distance: Out to 107.0 NM Altitude: 12900.0 to 13100.0 ft		
4	UDT ESV IGM IGM [IFPA]	N35° 15' 37.85", W113° 56' 02.69"	15.0 E	40	3428.5	108.8	UDT ESV IGM	
ESV:		Bearing [True]: 331.0° to 342.0° Bearing [Mag]: 316.0° to 327.0°				Arc Distance: Out to 66.0 NM Altitude: 8600.0 to 10100.0 ft		
5	UDT ESV MMM MMM [IFPA]	N36° 46' 09.31", W114° 16' 38.83"	16.0 E	40	2106.3	114.3	UDT ESV MMM	
ESV:		Bearing [True]: 190.0° to 209.0° Bearing [Mag]: 174.0° to 193.0°				Arc Distance: Out to 69.0 NM Altitude: 6600.0 to 13100.0 ft		
6	UDT ESV PGS PGS [IFPA]	N35° 37' 28.96", W113° 32' 40.08"	15.0 E	130	4760	112.0	UDT ESV PGS	
ESV:		Bearing [True]: 300.0° to 313.0° Bearing [Mag]: 285.0° to 298.0°				Arc Distance: Out to 60.0 NM Altitude: 8600.0 to 10100.0 ft		
7	UDT ESV LAS LAS [IFPA]	N36° 04' 46.93", W115° 09' 35.27"	15.0 E	130	2158.8	116.9	UDT ESV LAS	
ESV:		Bearing [True]: 96.0° to 132.0° Bearing [Mag]: 81.0° to 117.0°				Arc Distance: Out to 88.0 NM Altitude: 11900.0 to 45000.0 ft		

DME DME Assessment Results for RKSTR1 path TUUTH_YAGGR



DME DME Assessment Results for RKSTR1 path TUUTH_YAGGR

Graphic Depiction 1



DME DME Assessment Results for RKSTR1 path TUUTH_YAGGR

Graphic Depiction 2

